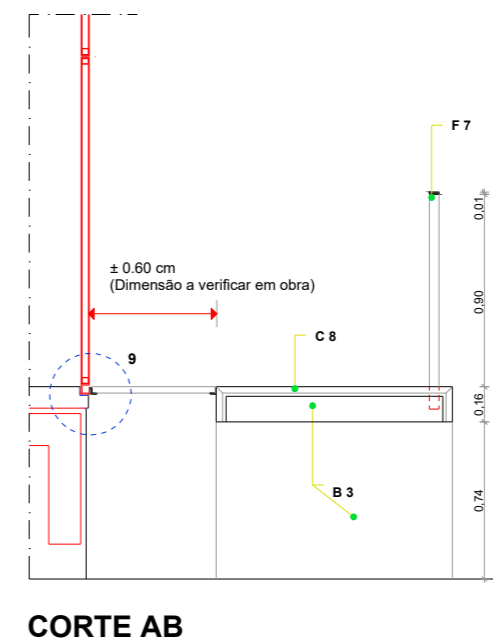
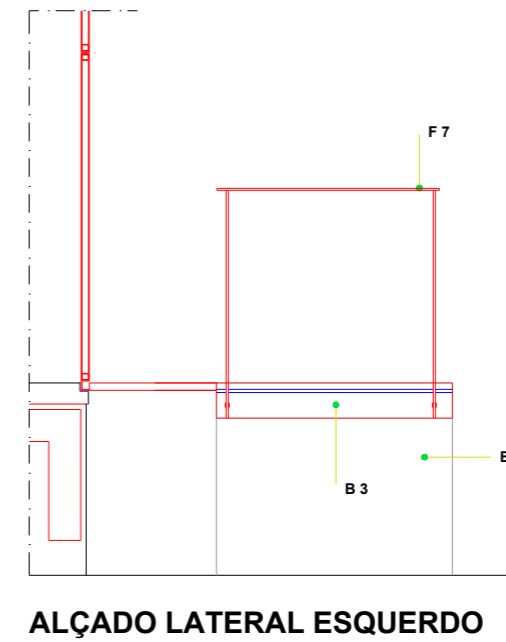
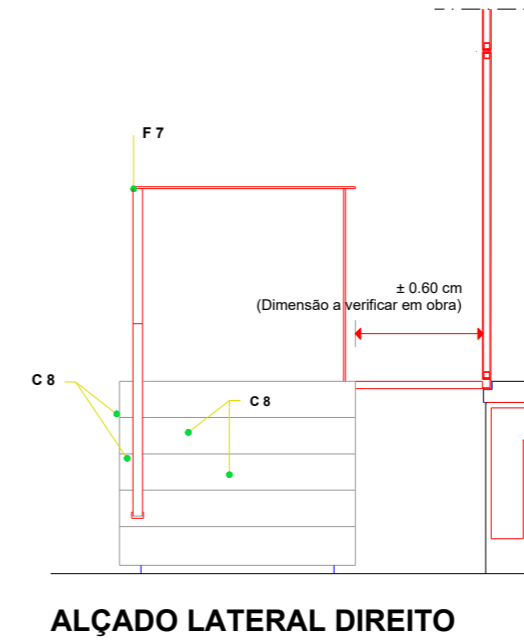
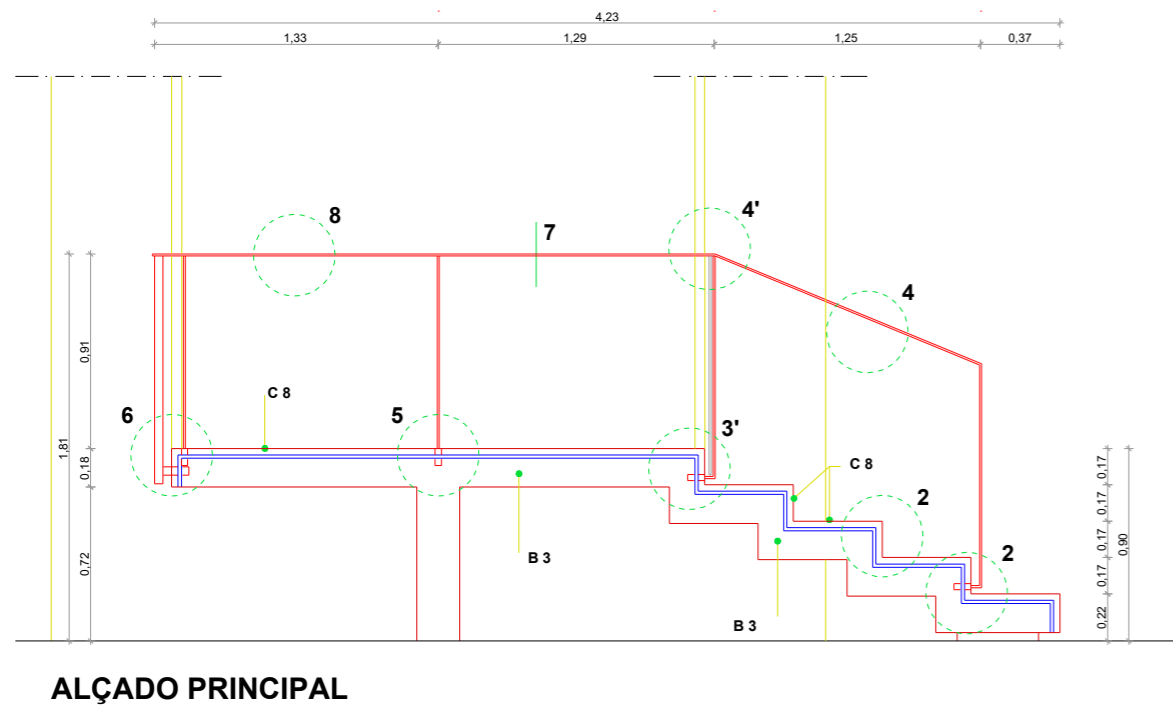
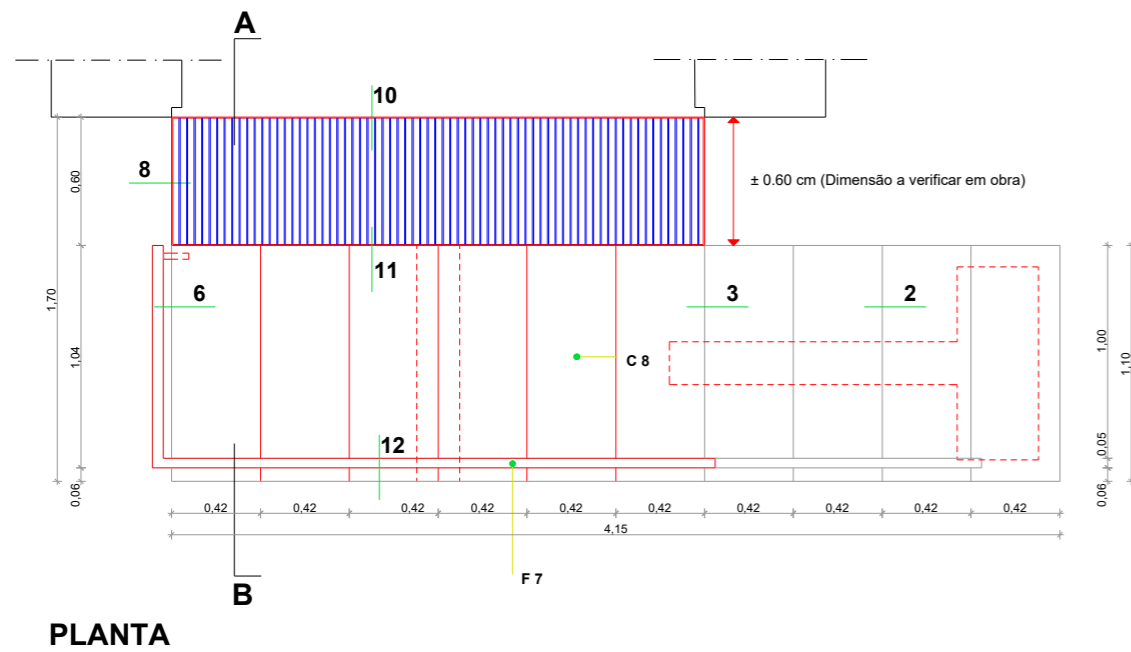


# DESENHOS DA NOVA ESCADA JUNTO AO VÃO PEV2 (ESC 1:25)



**NOTAS:**  
 -TODAS AS COTAS INDICADAS EM DESENHO DEVERÃO SER RECTIFICADAS EM OBRA.  
 -OS PORMENORES DESTA ESCADA SÃO IDENTICOS AOS PROMENORES DA ESCADA EXTERIOR E.E. 2