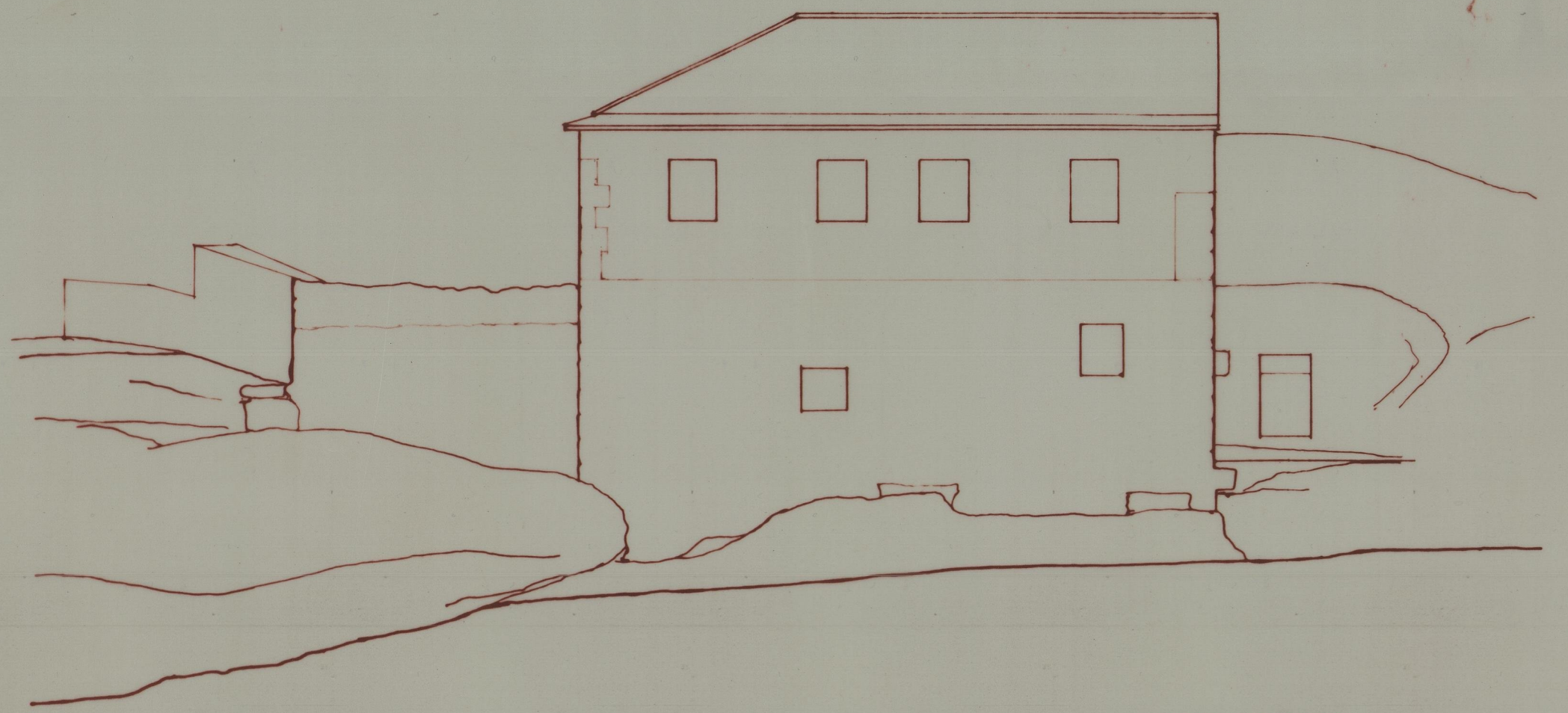
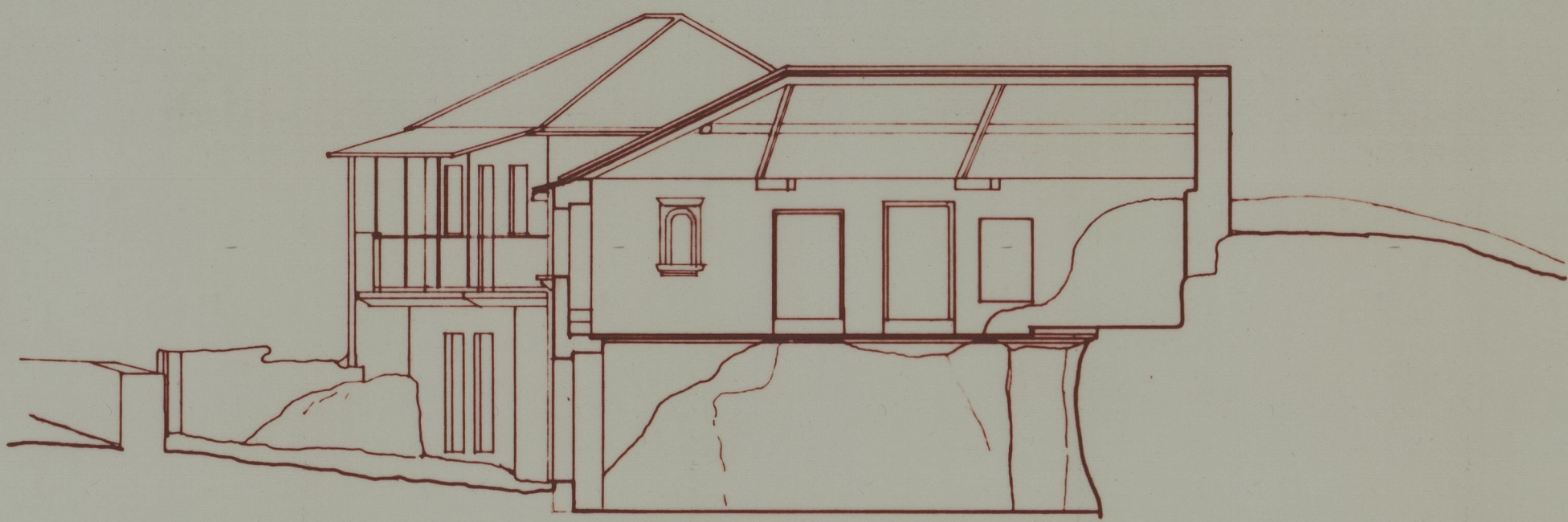


CORTE A-A'



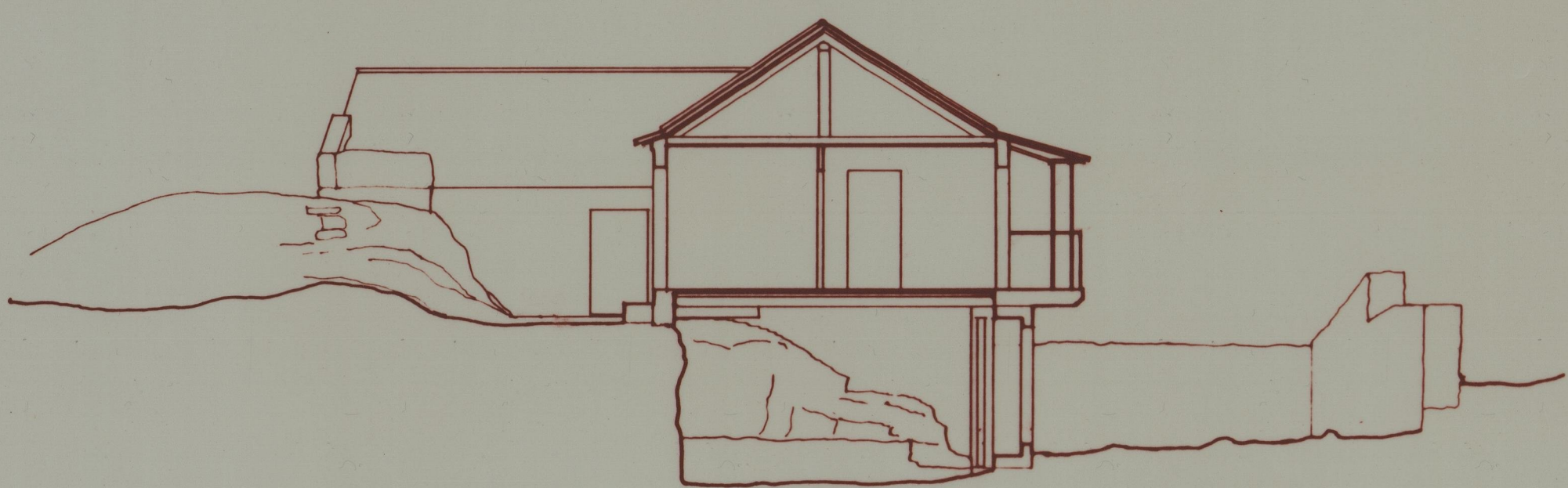
ALÇADO SUDESTE



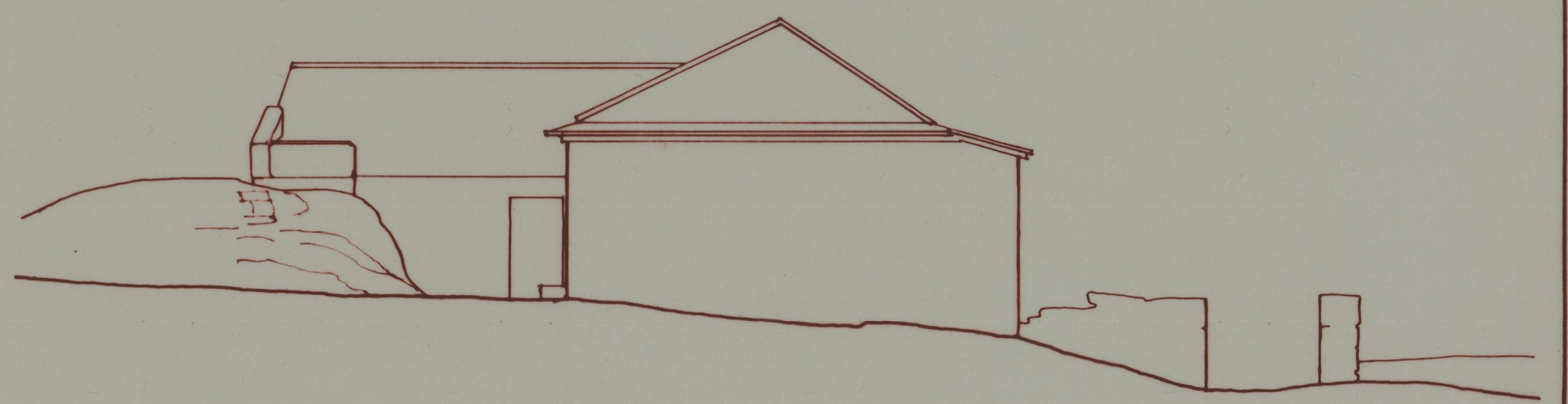
CORTE B-B'



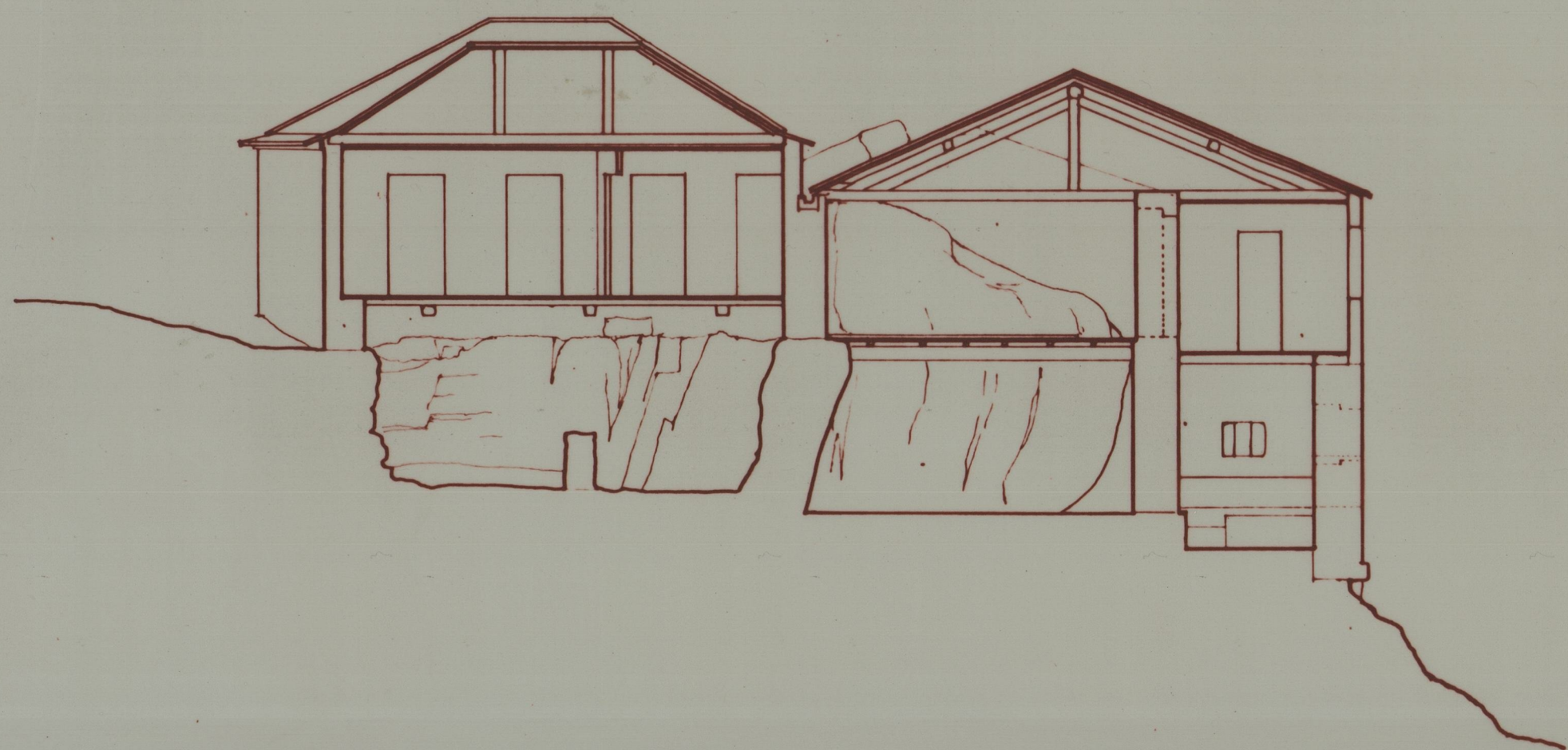
ALÇADO NORDESTE



CORTE C-C'



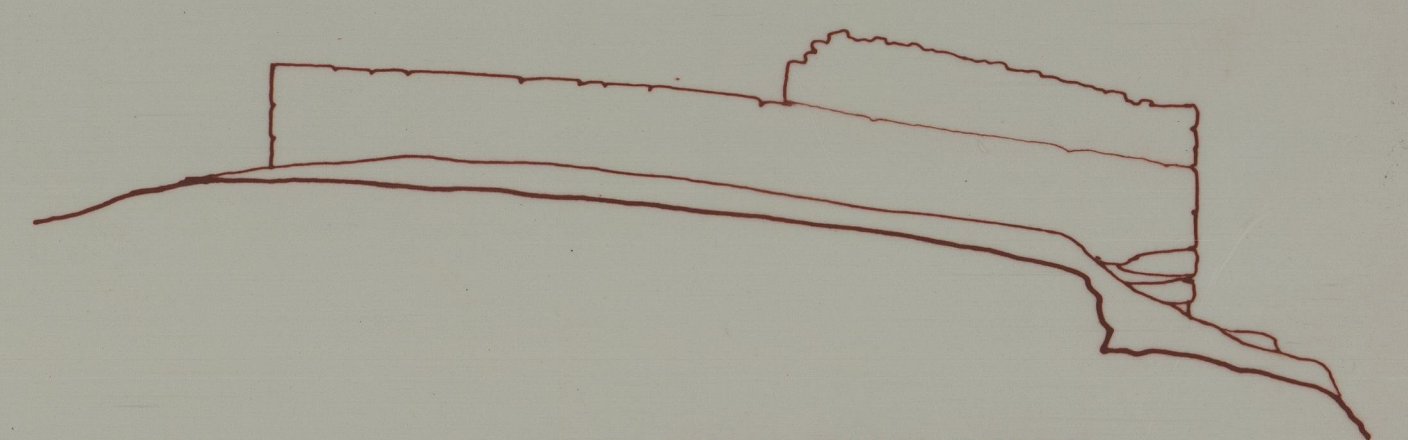
ALÇADO NOROESTE



CORTE D-D'



ALÇADO SUDOESTE



ALÇADO DO MURO SUDOESTE

PANÓIAS
LEVANTAMENTO
NÚCLEO-A — CORTES E ALÇADOS — ESC.: 1:100