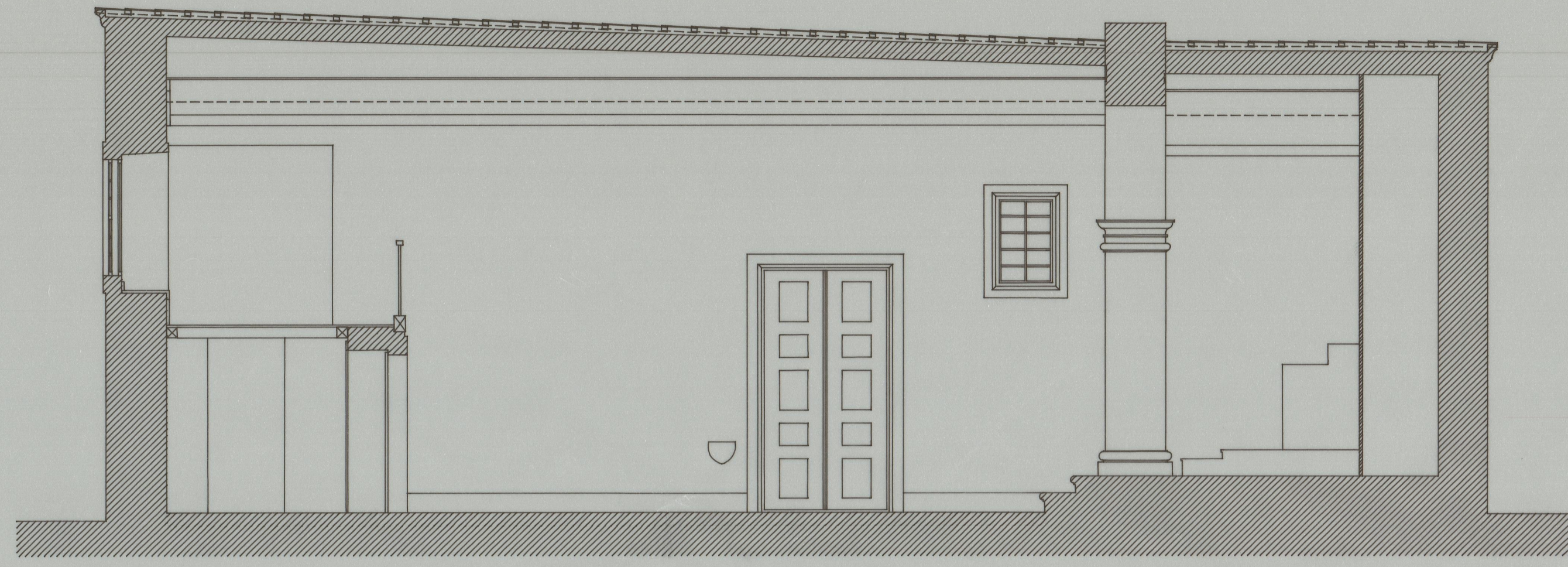


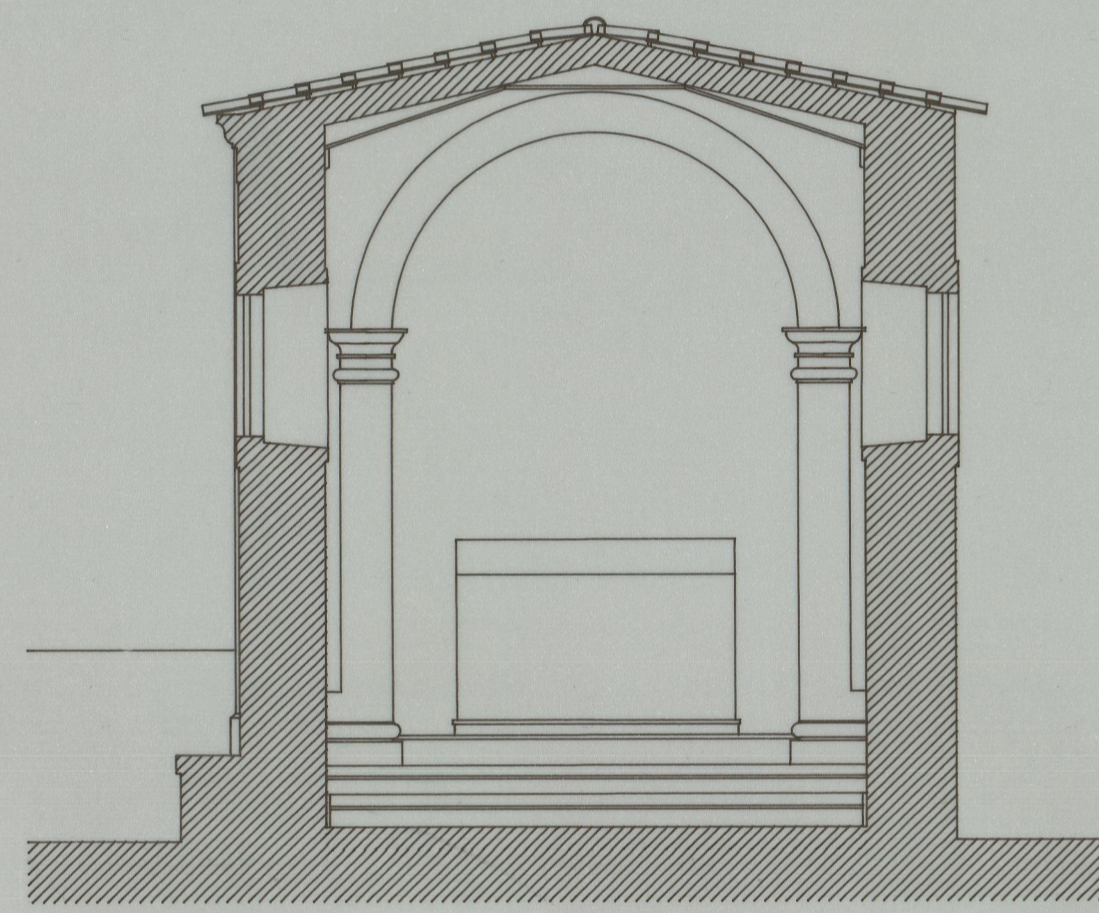
CORTE C1



CORTE C2



CORTE C3



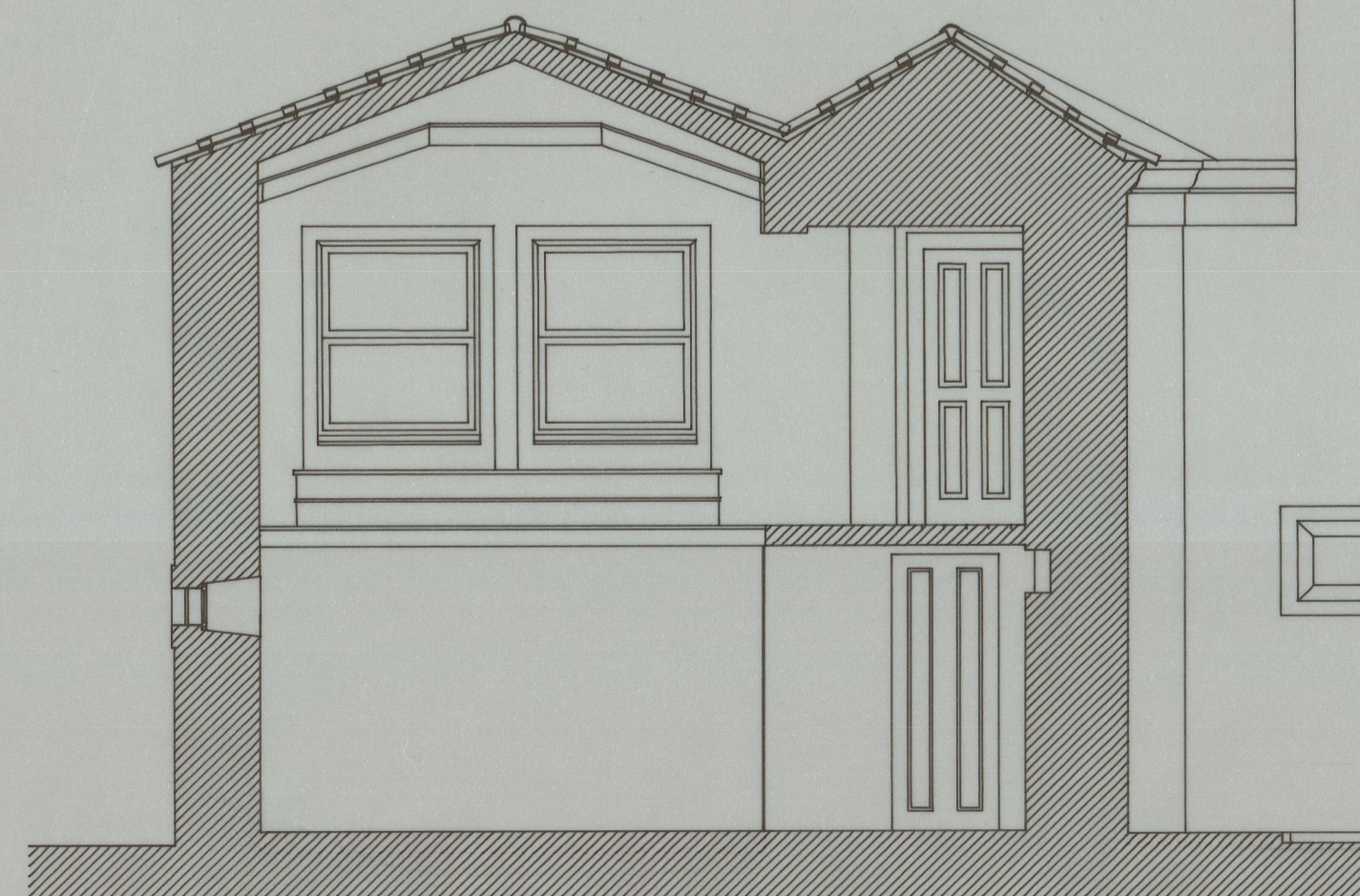
CORTE C4



CORTE C5



CORTE C6



CORTE C7



IPPAR CASA DE RAMALDE - PORTO RECUPERAÇÃO DA CAPELA - LEVANTAMENTO CORTES		col. rui nunes silva Julho 1996 Escala 1/50	Humberto Vieira / Abílio Mourão - Arquitectos 02
--	--	---	---

Cota 2520
 41-3693