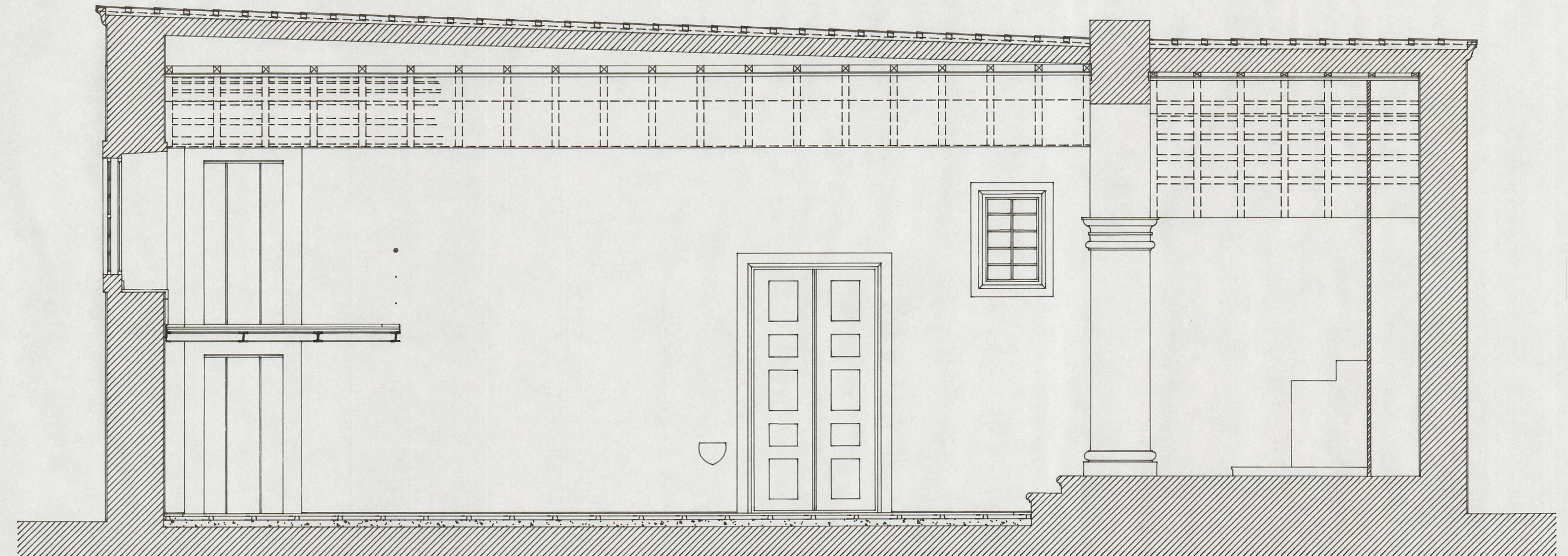
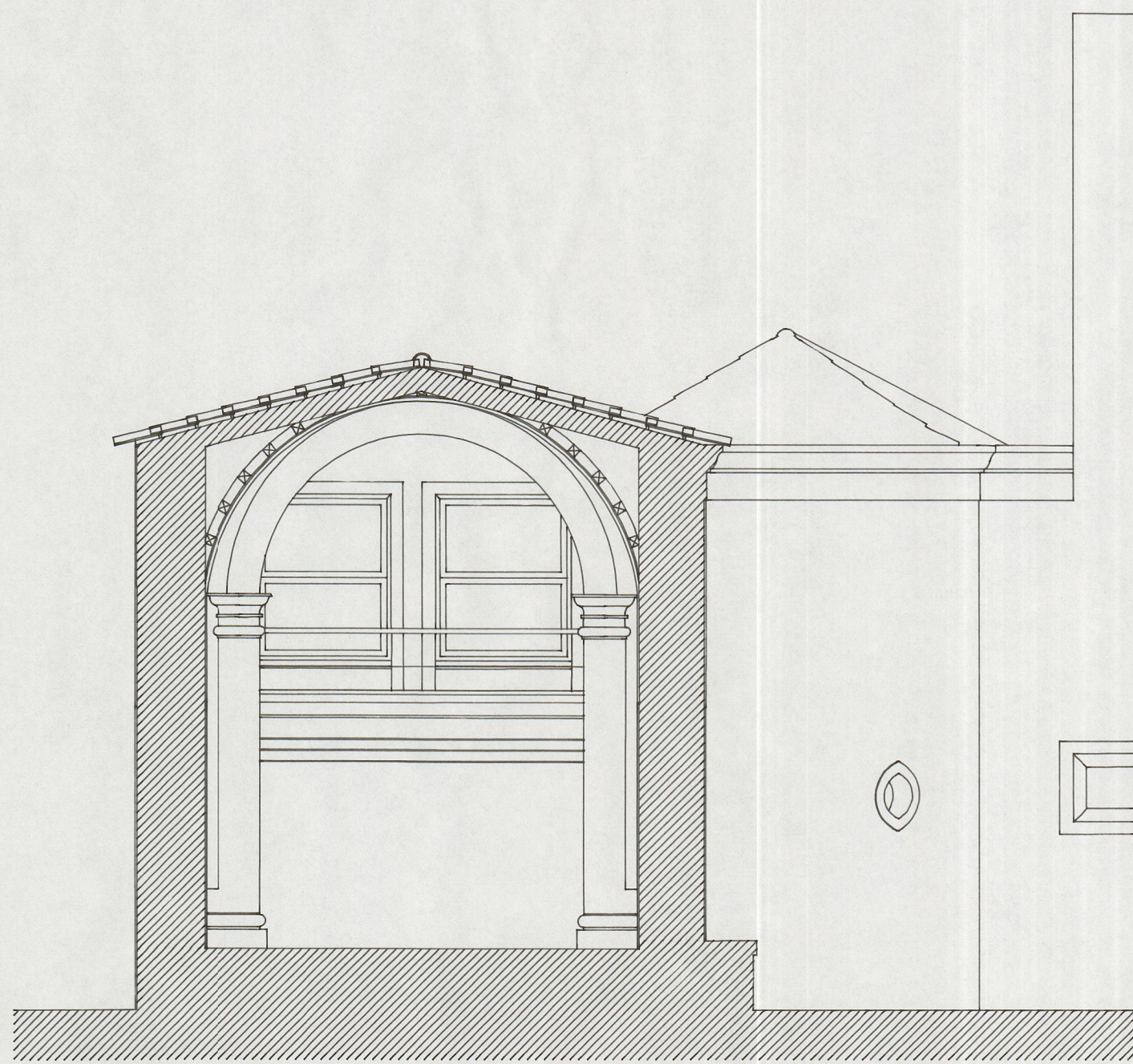


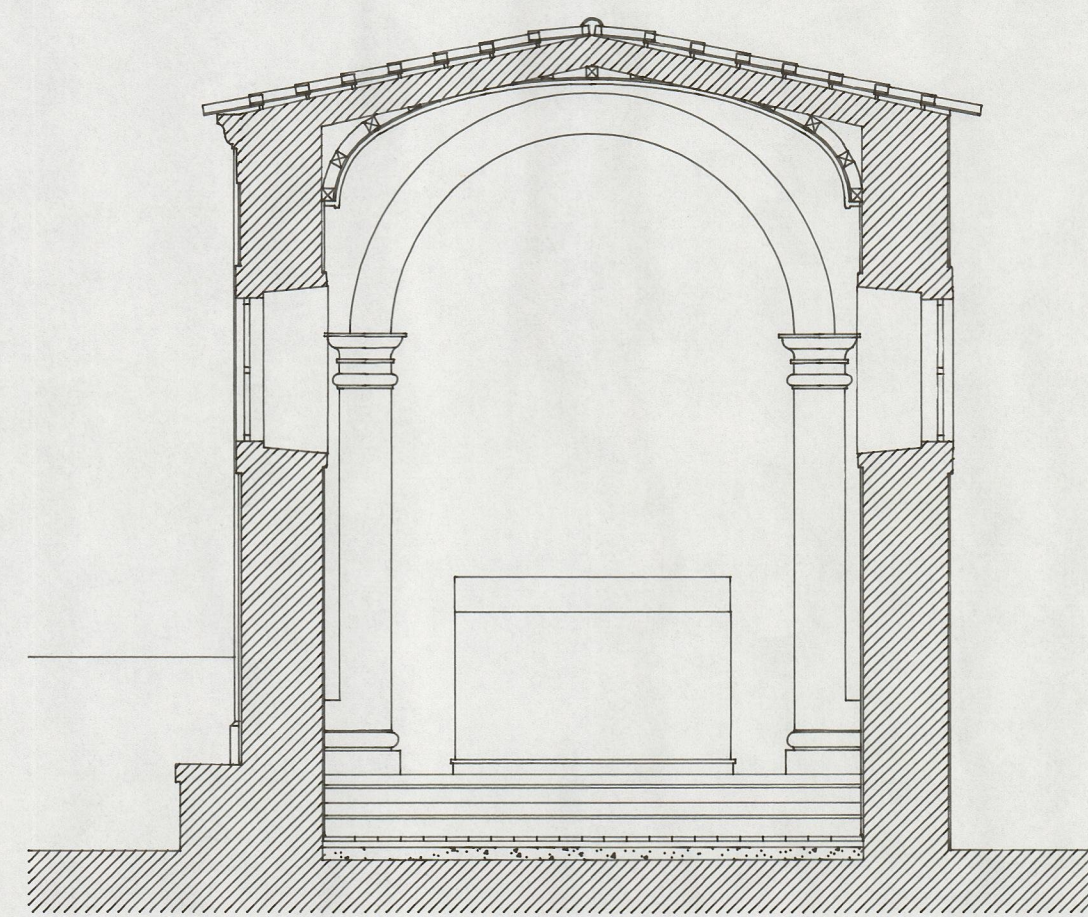
CORTE C1



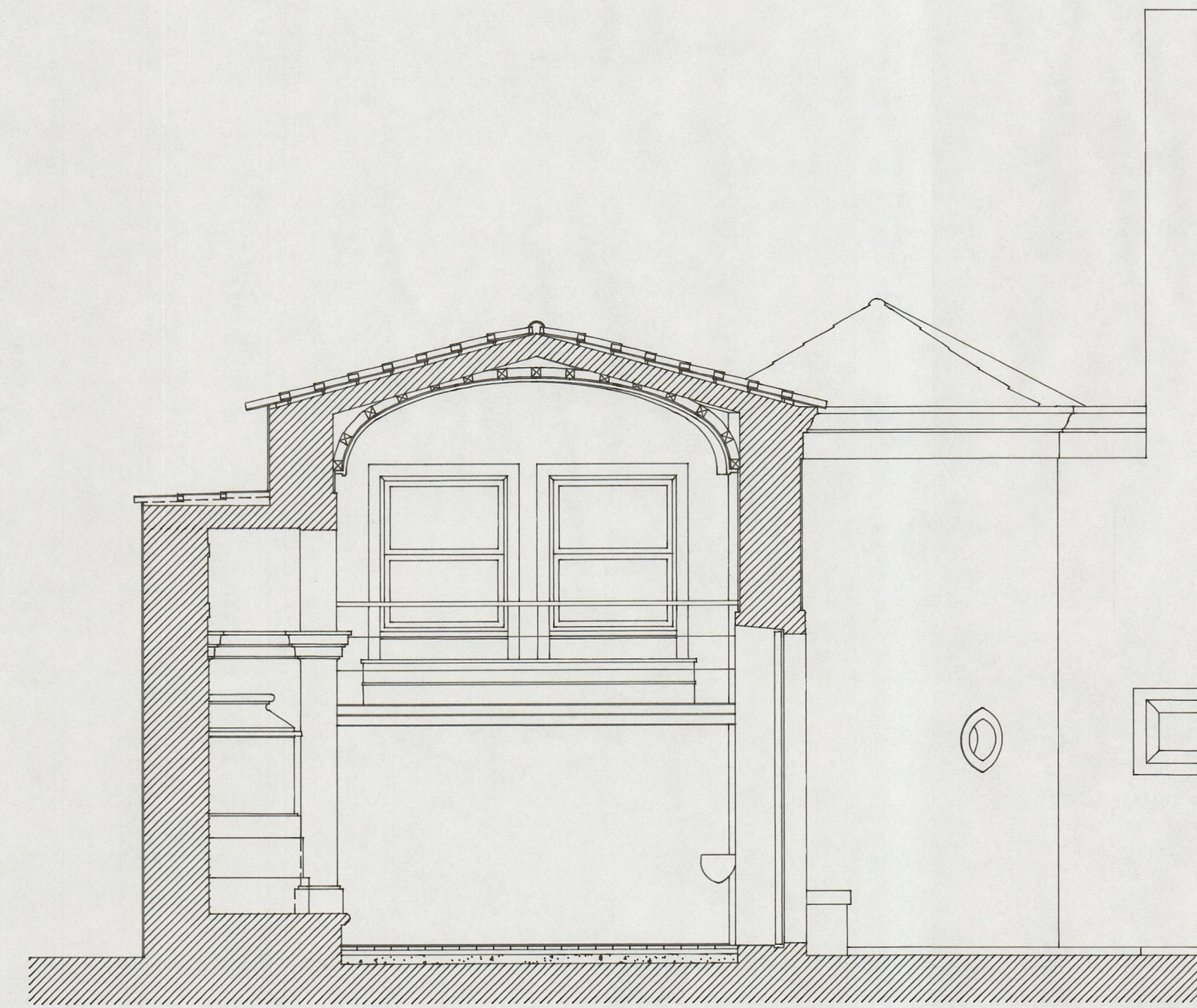
CORTE C2



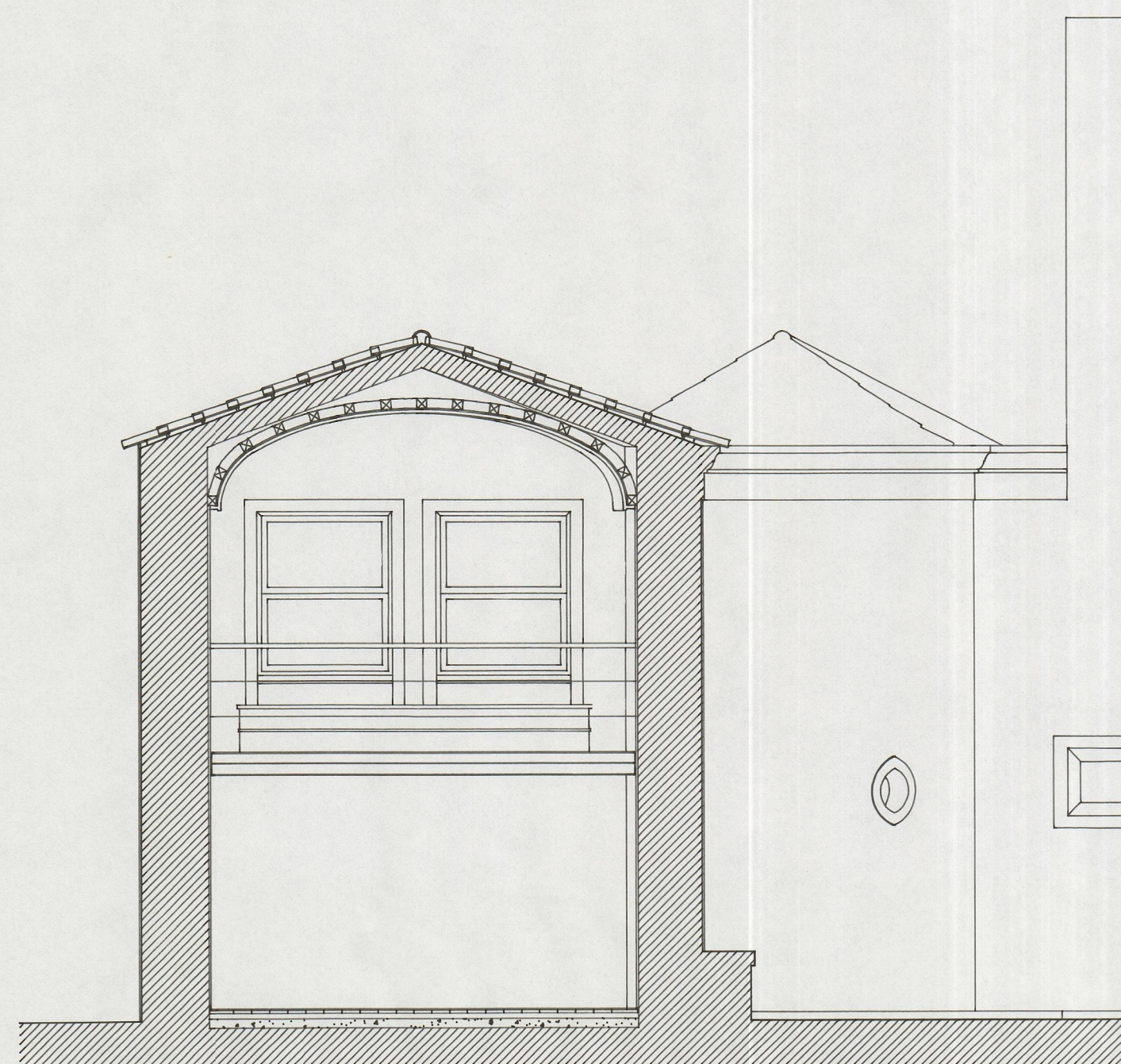
CORTE C3



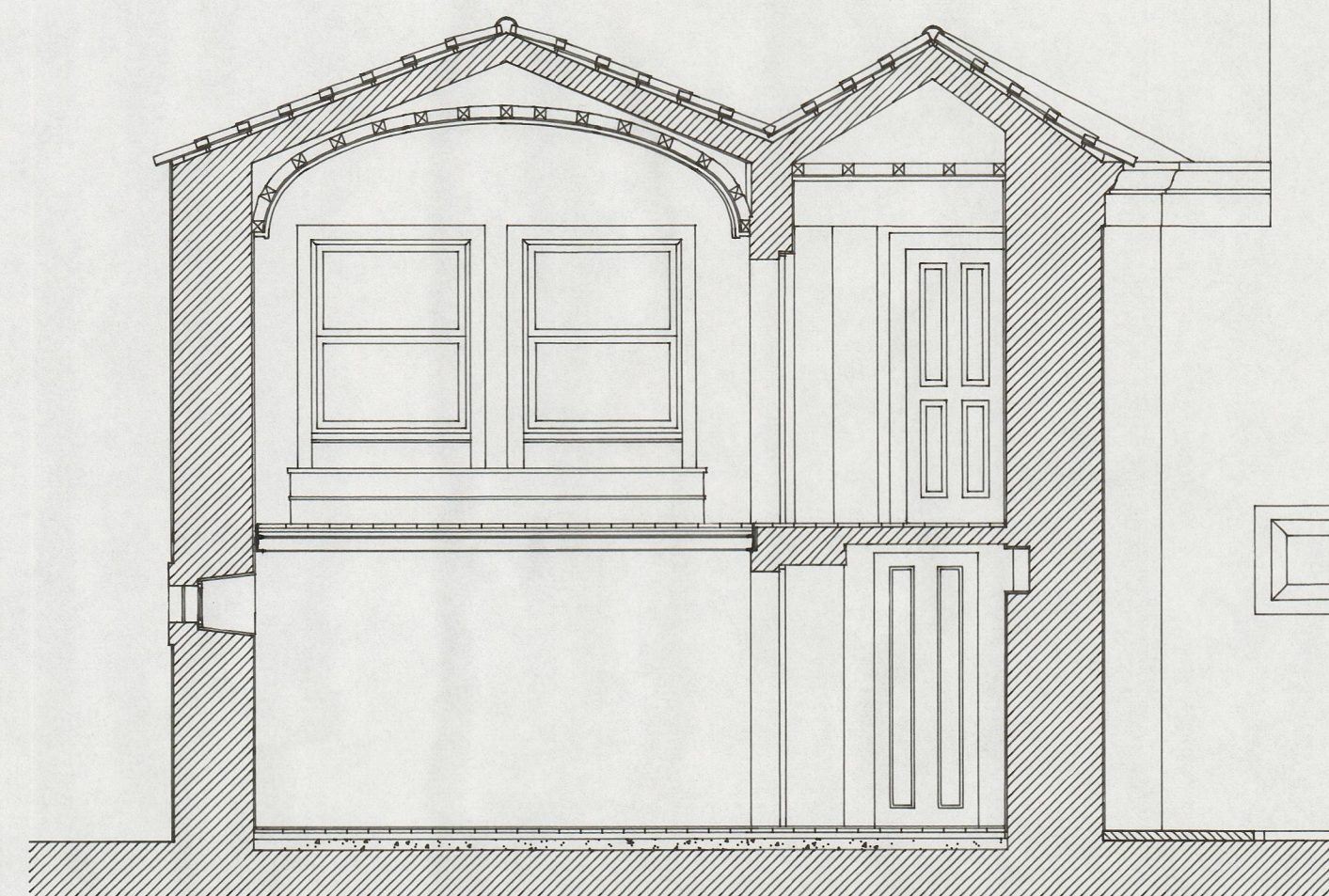
CORTE C4



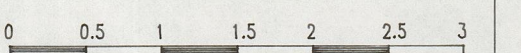
CORTE C5



CORTE C6



CORTE C7



Humberto Vieira / Abilio Mourão - Arquitectos

IPPAR	col. Rui Nunes Silva	
CASA DE RAMALDE - PORTO	Julho 1996	
RECUPERAÇÃO DA CAPELA - PROJ. EXECUÇÃO	Escala 1/50	05
CORTES		