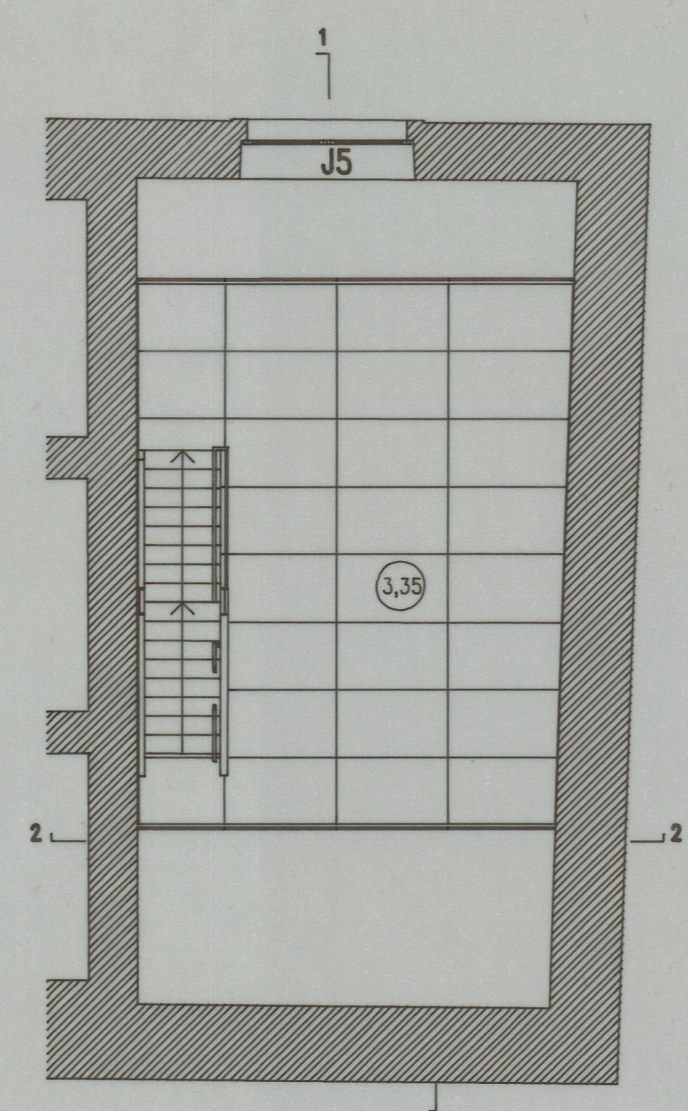
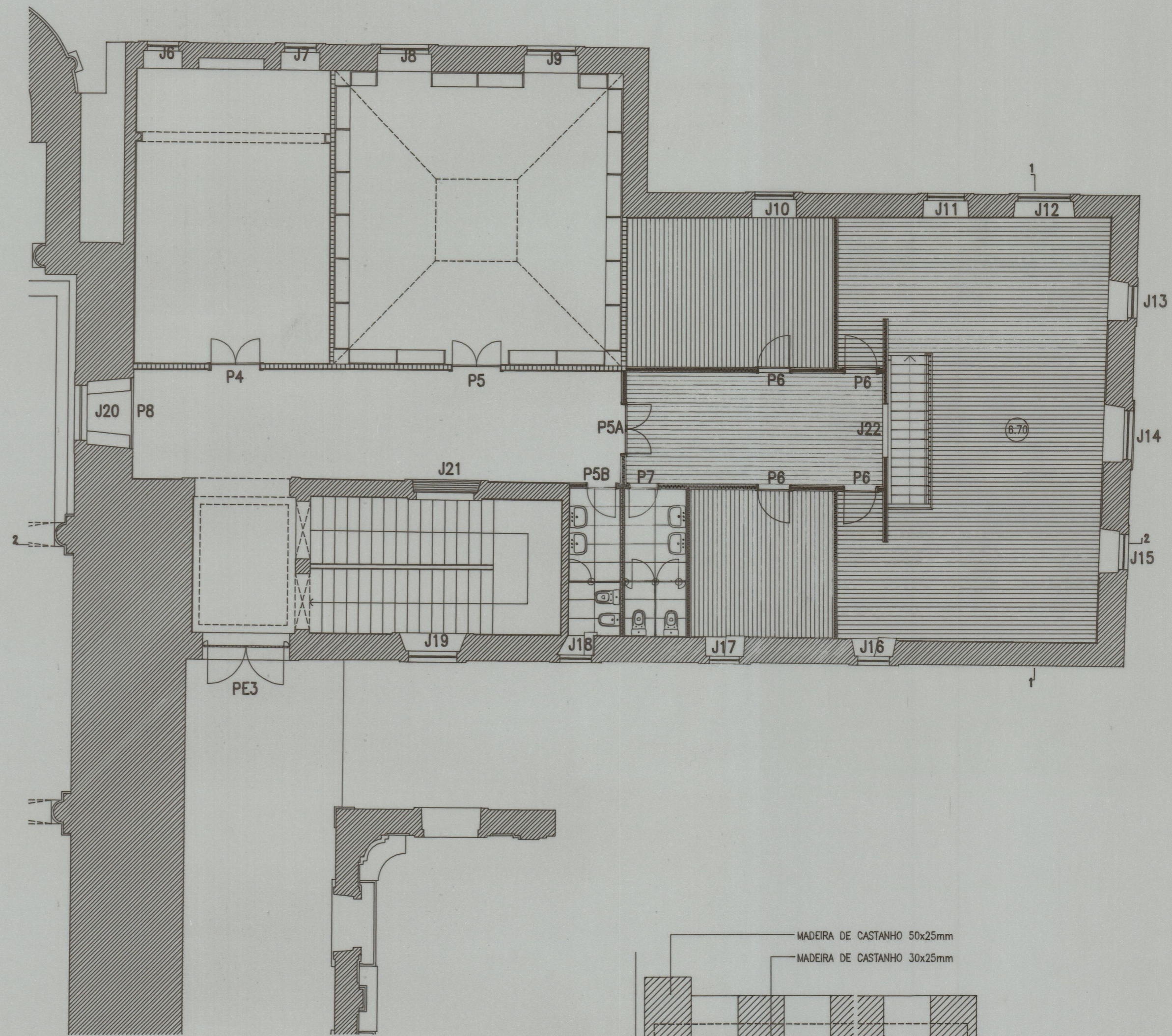


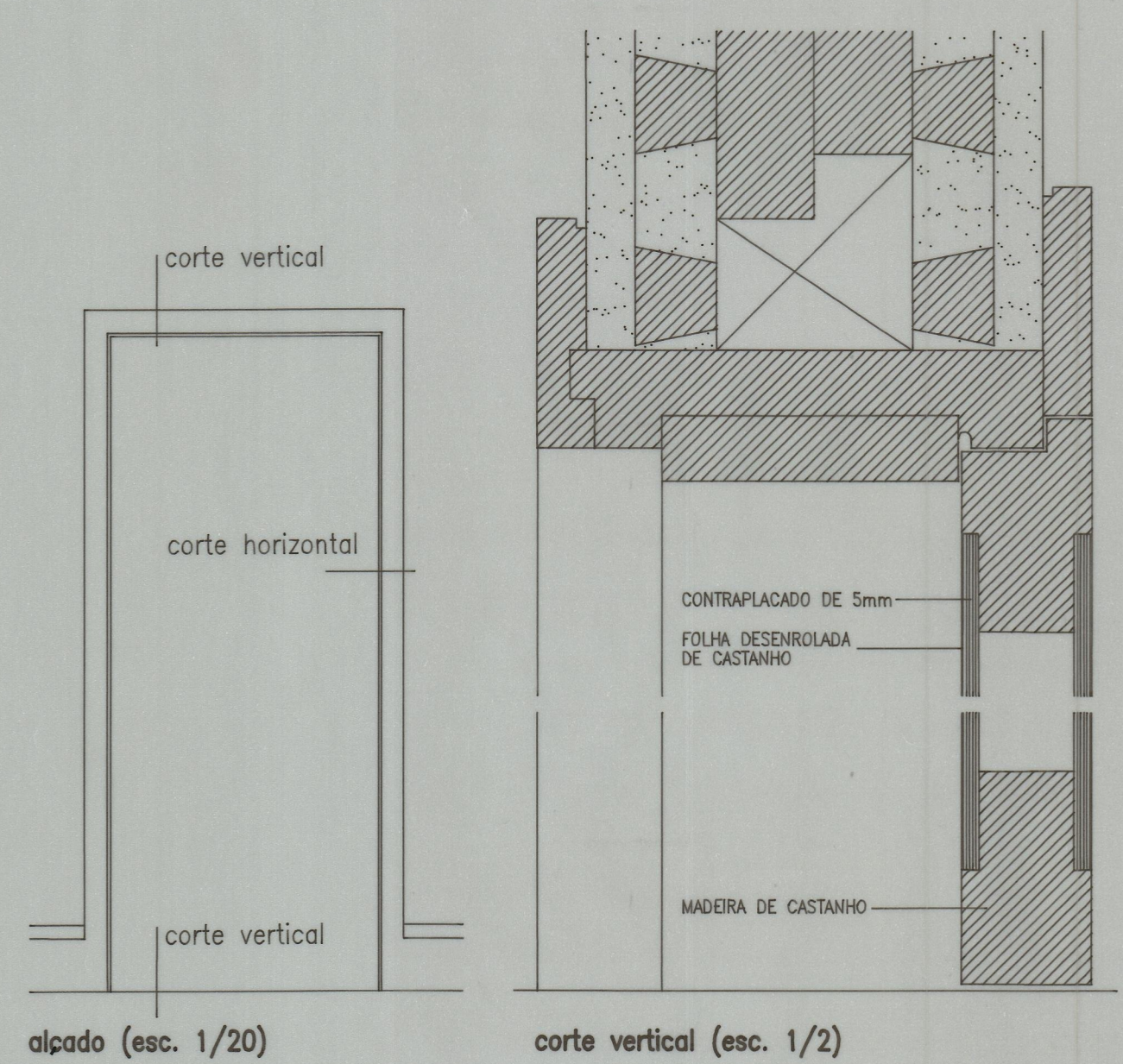
PLANTA R/CHÃO



PLANTA PISO INTERMEDIO

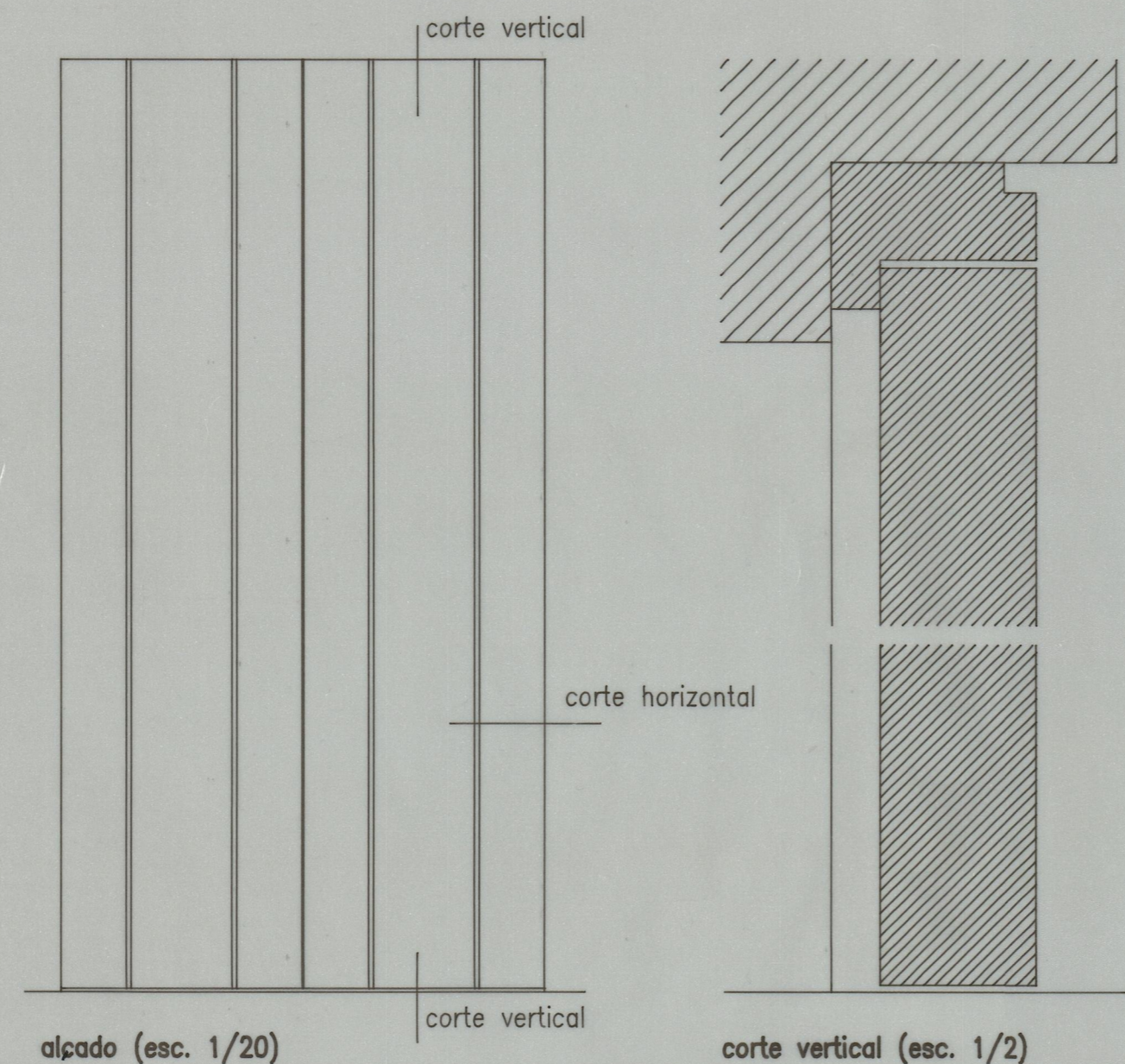


PLANTA 1º PISO



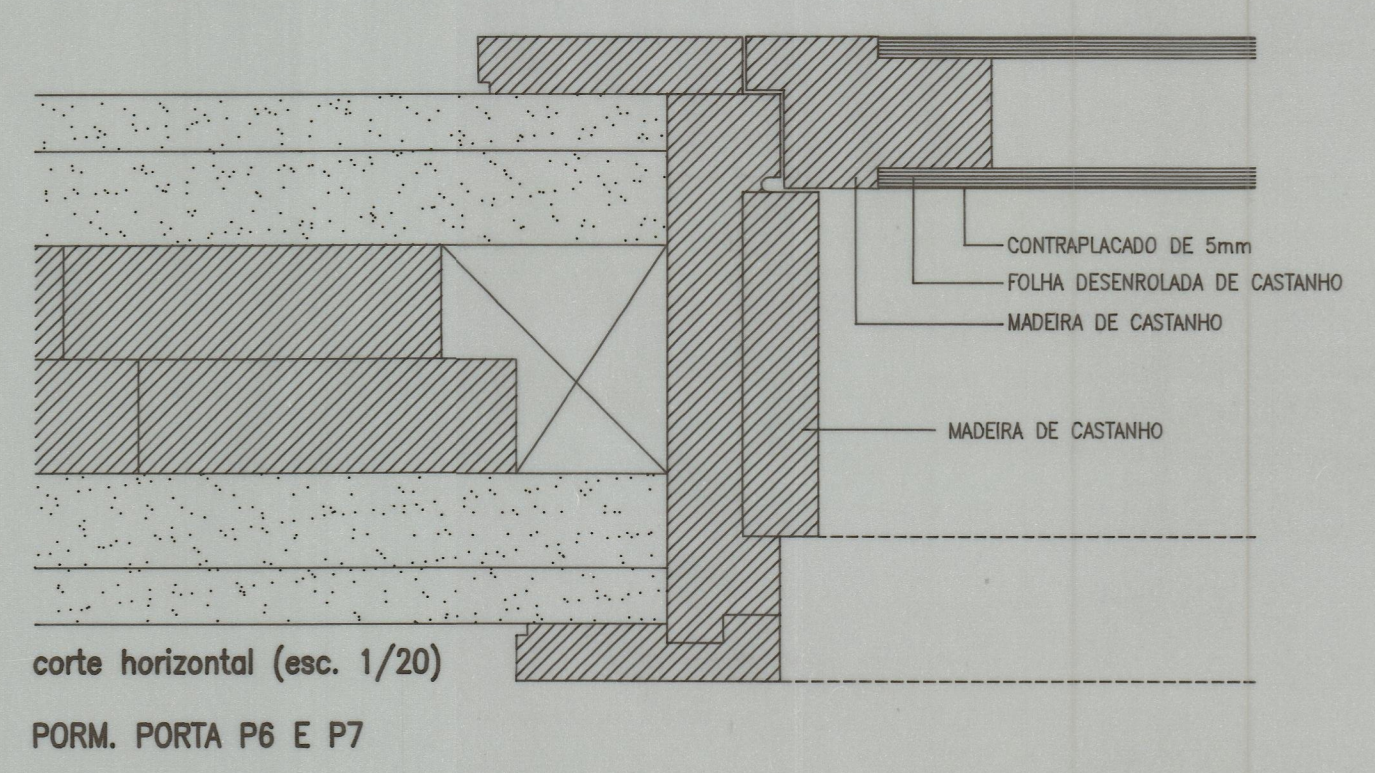
alçado (esc. 1/20)

corte vertical (esc. 1/2)



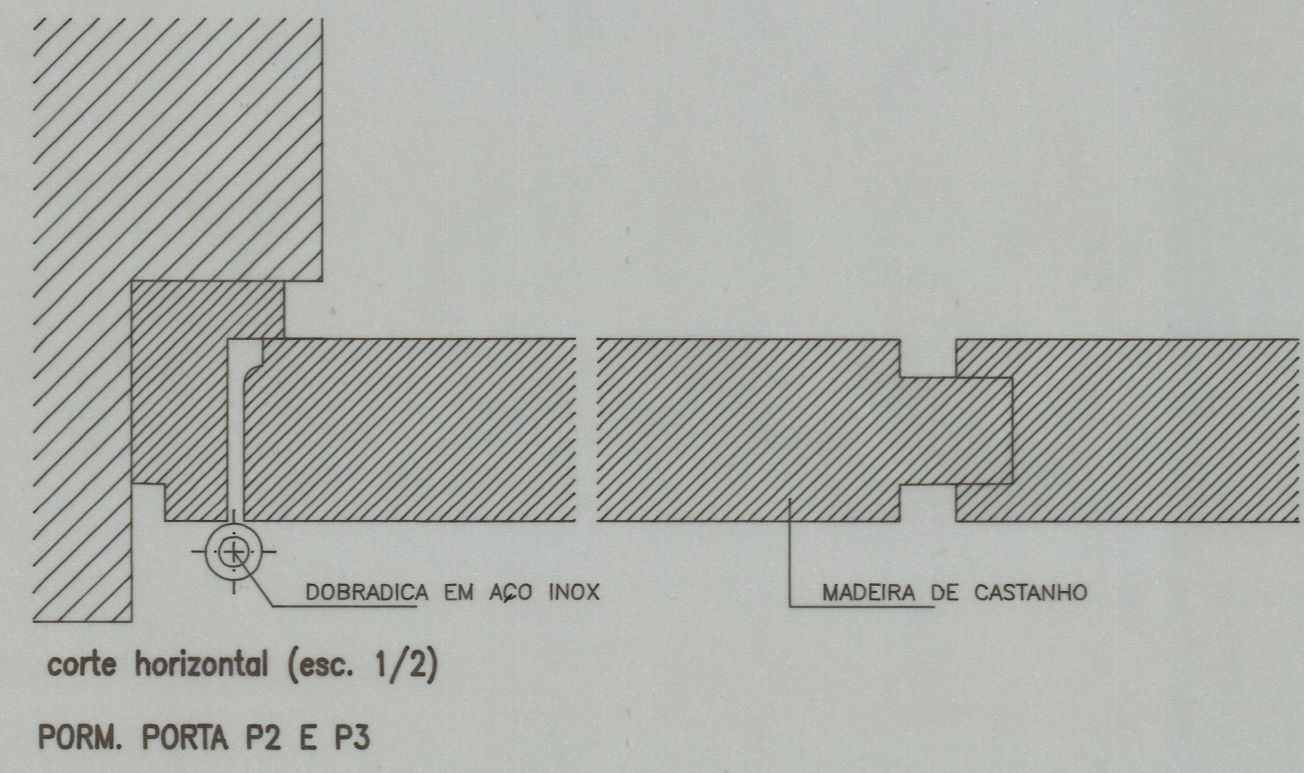
alçado (esc. 1/20)

corte vertical (esc. 1/2)



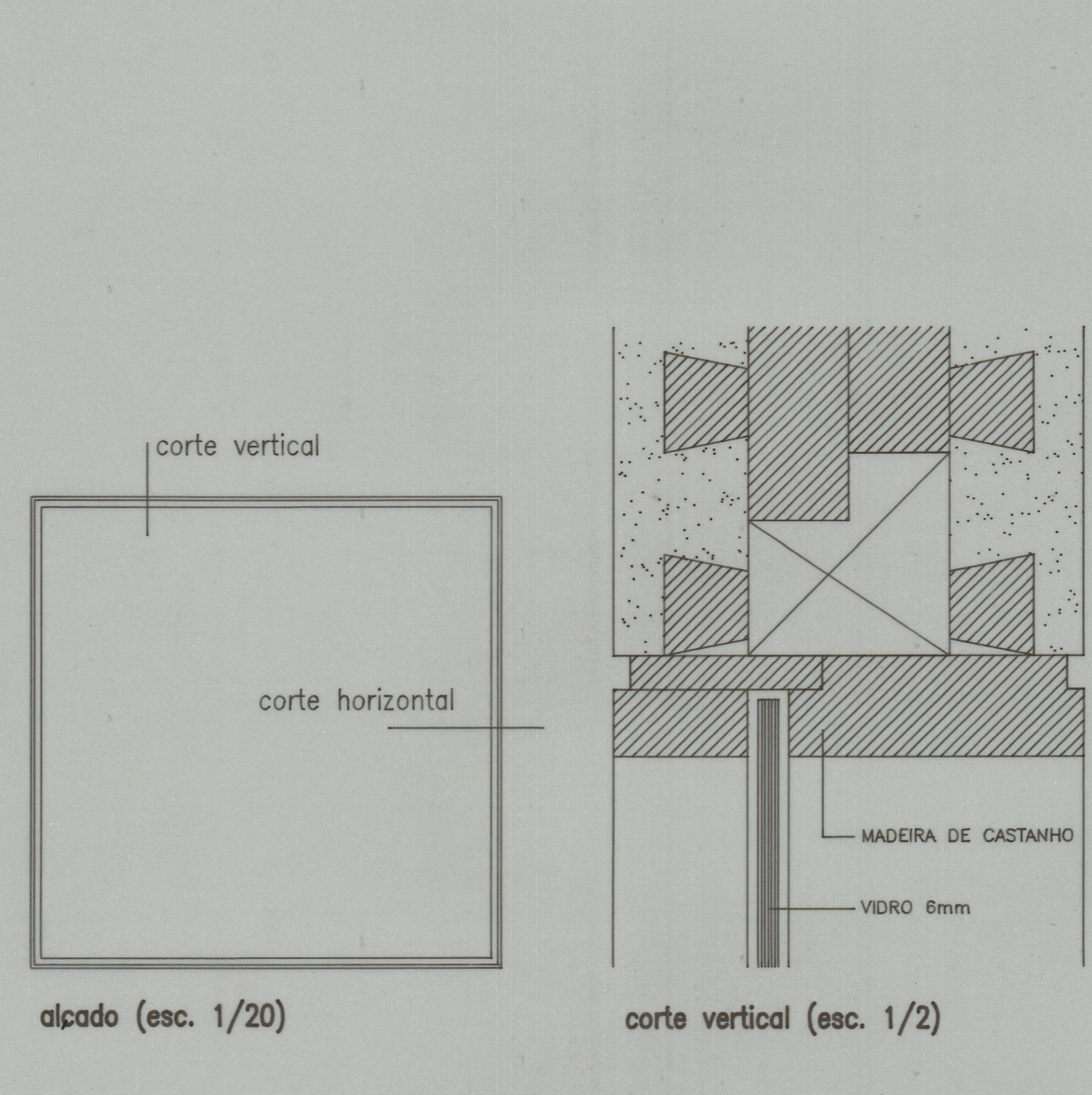
corte horizontal (esc. 1/20)

PORM. PORTA P6 E P7



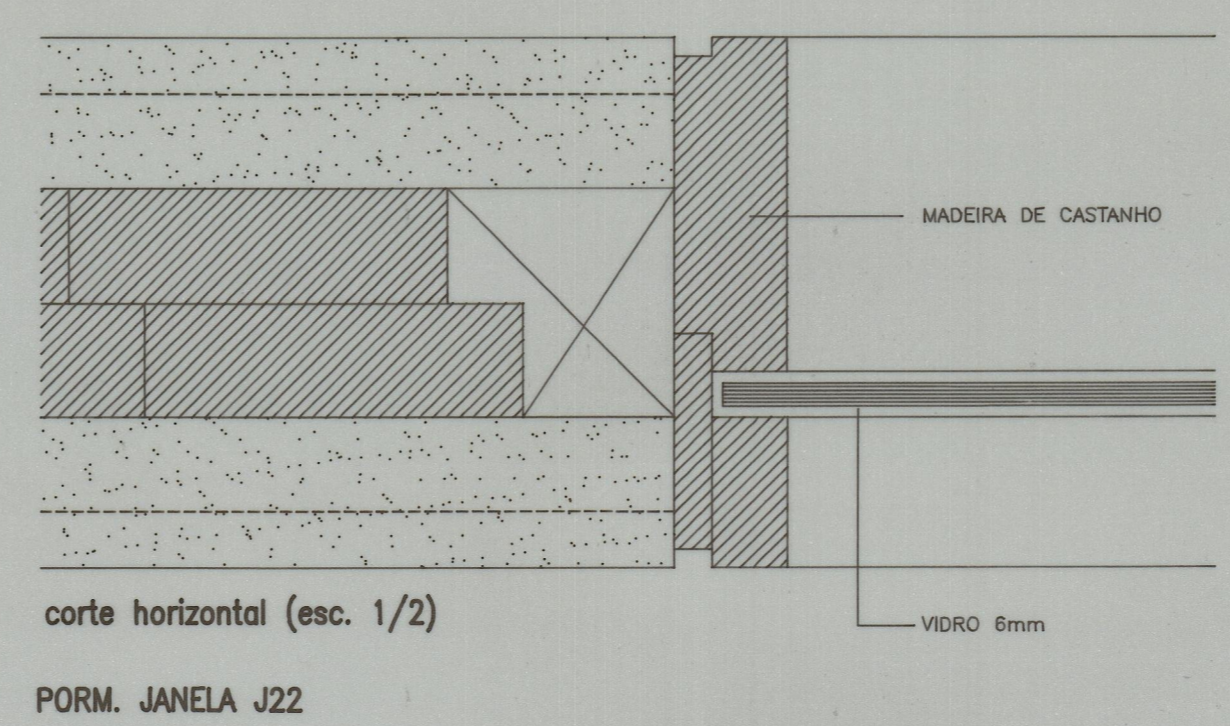
corte horizontal (esc. 1/2)

PORM. PORTA P2 E P3



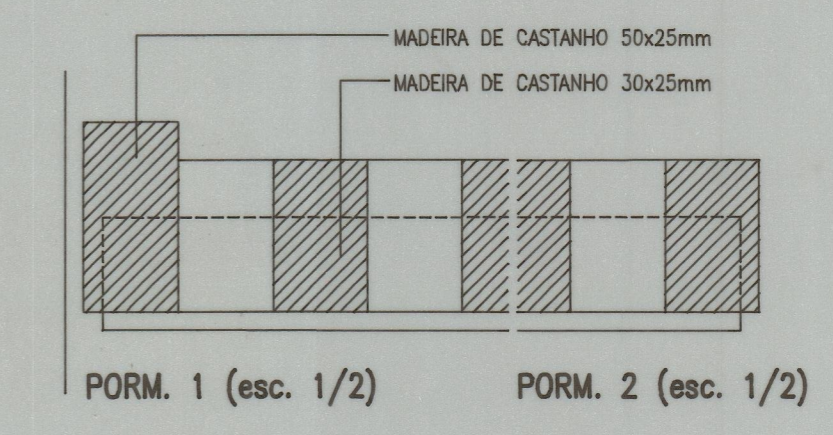
alçado (esc. 1/20)

corte vertical (esc. 1/2)



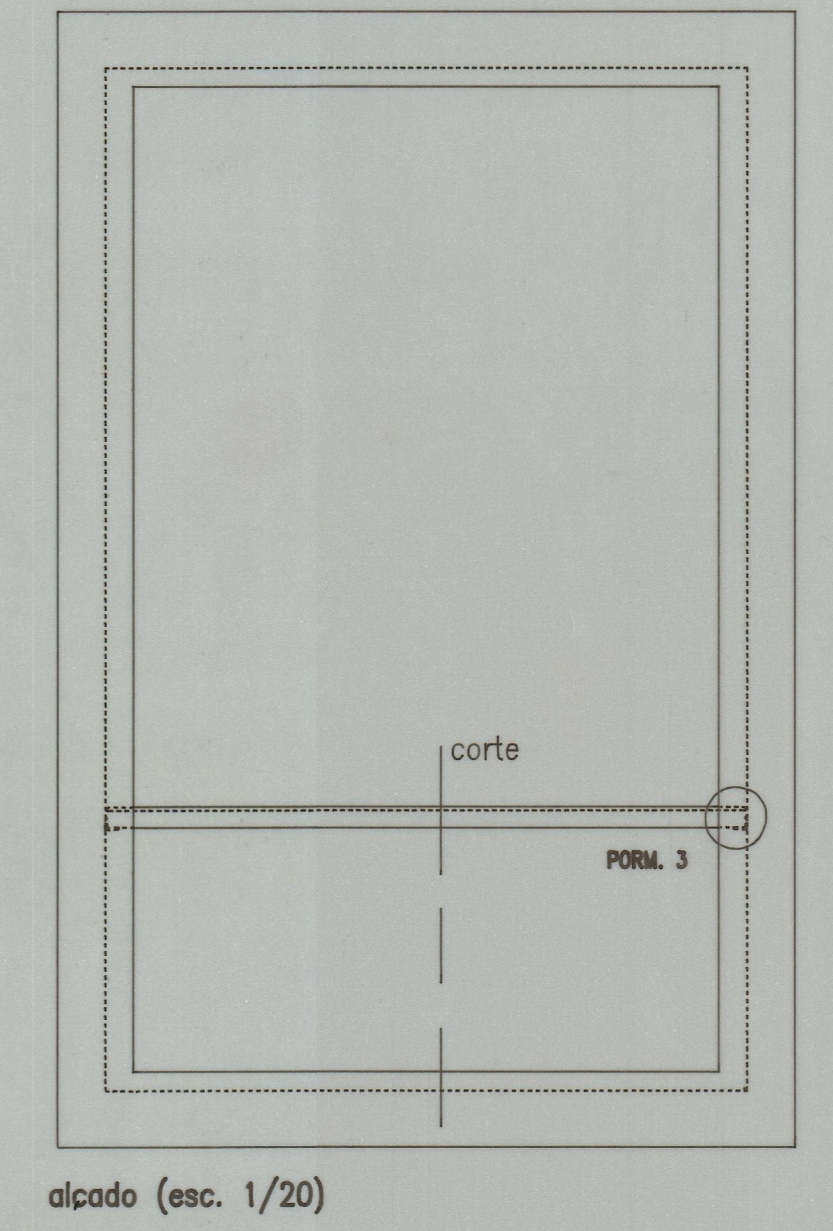
corte horizontal (esc. 1/2)

PORM. JANELA J21



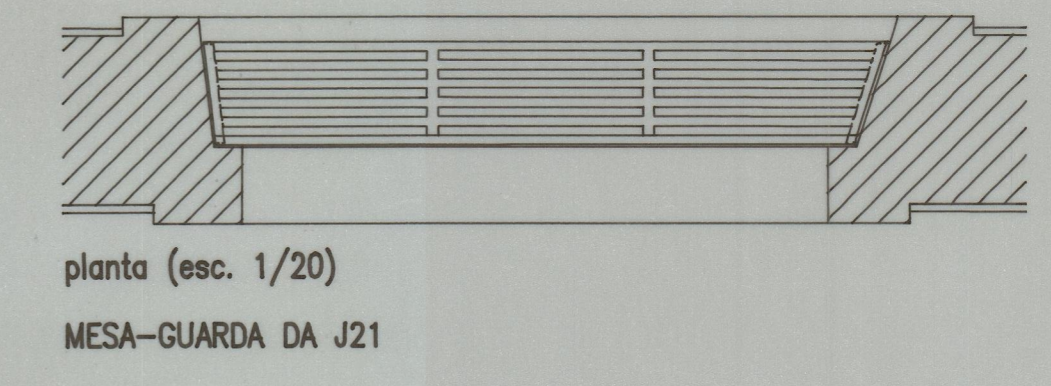
PORM. 1 (esc. 1/2)

PORM. 2 (esc. 1/2)



alçado (esc. 1/20)

PORM. 3 (esc. 1/2)



planta (esc. 1/20)

MESA-GUARDA DA J21

NORTE		Humberto Vieira / Abílio Mourão - Arquitectos	
IPPAR		MOSTEIRO DE POMBEIRO - FELGUEIRAS	
RECUPERAÇÃO DO CENTRO DE RESTAURO DE ORGÃOS - PROJECTO DE EXECUÇÃO		Janeiro 1997	
PLANTAS DE PAVIMENTOS E PORMENORES DE PORTAS INTERIORES		Escala 1/100, 1/2	
		04	

Plta 2937

41-25802