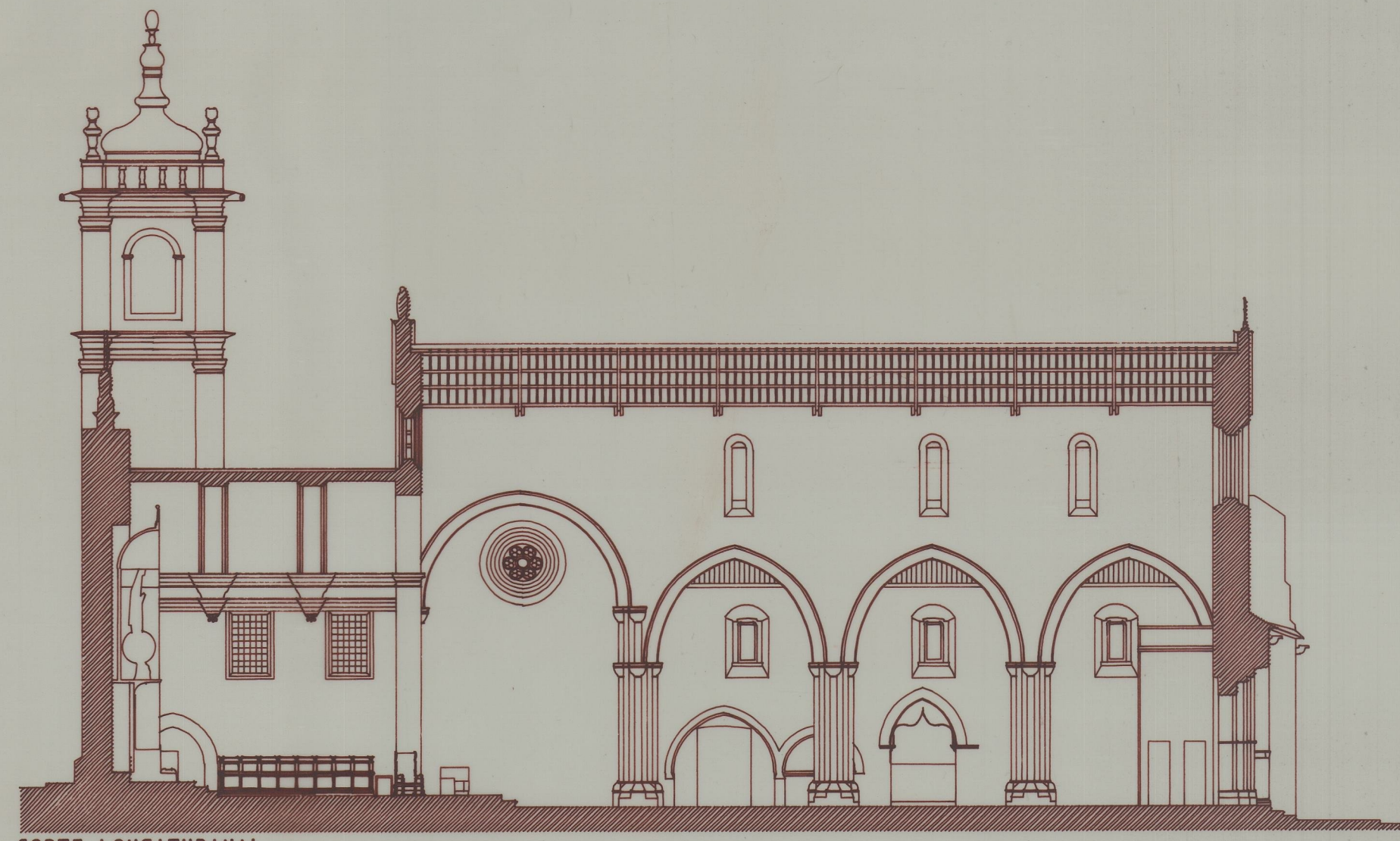




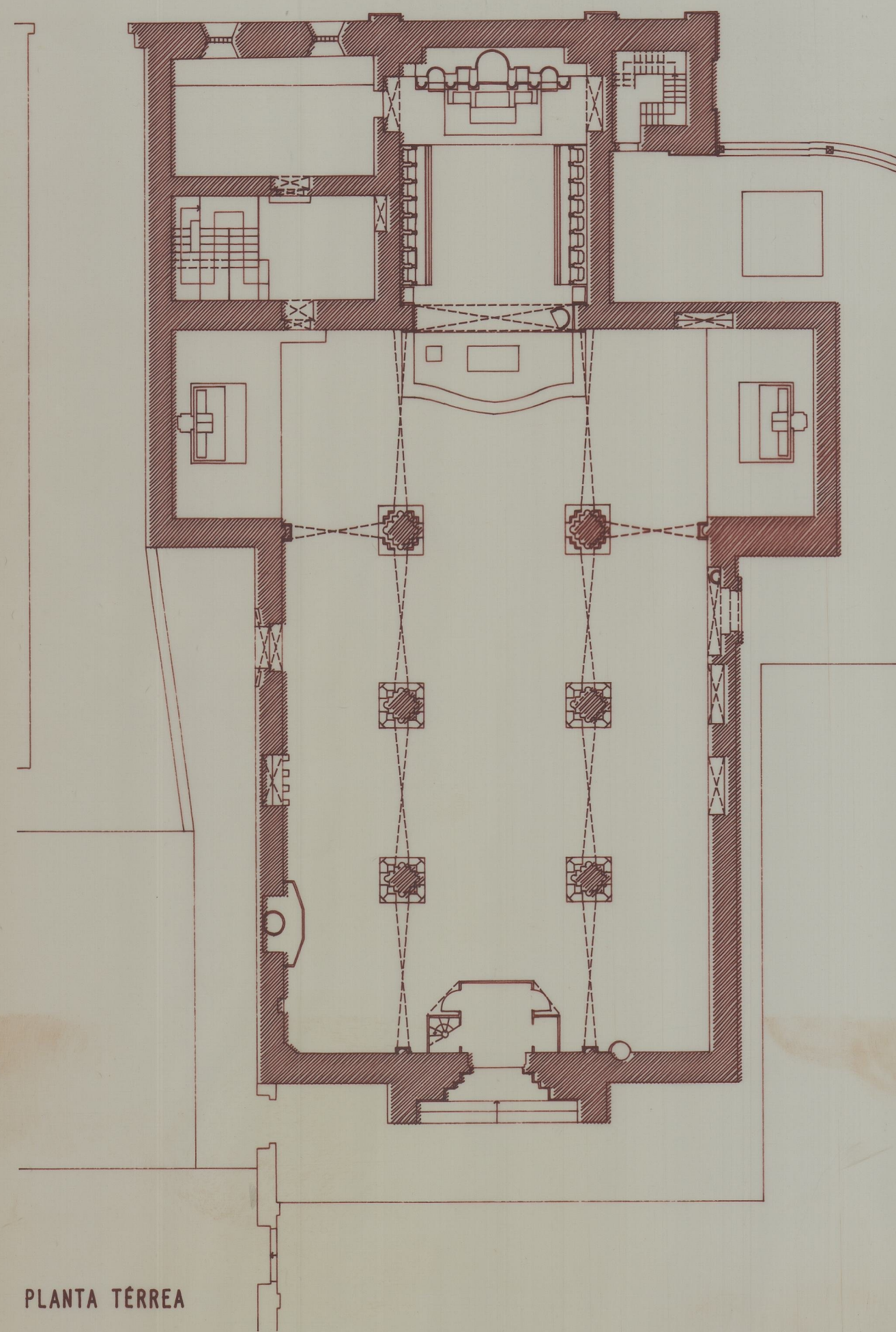
CORTE TRANSVERSAL



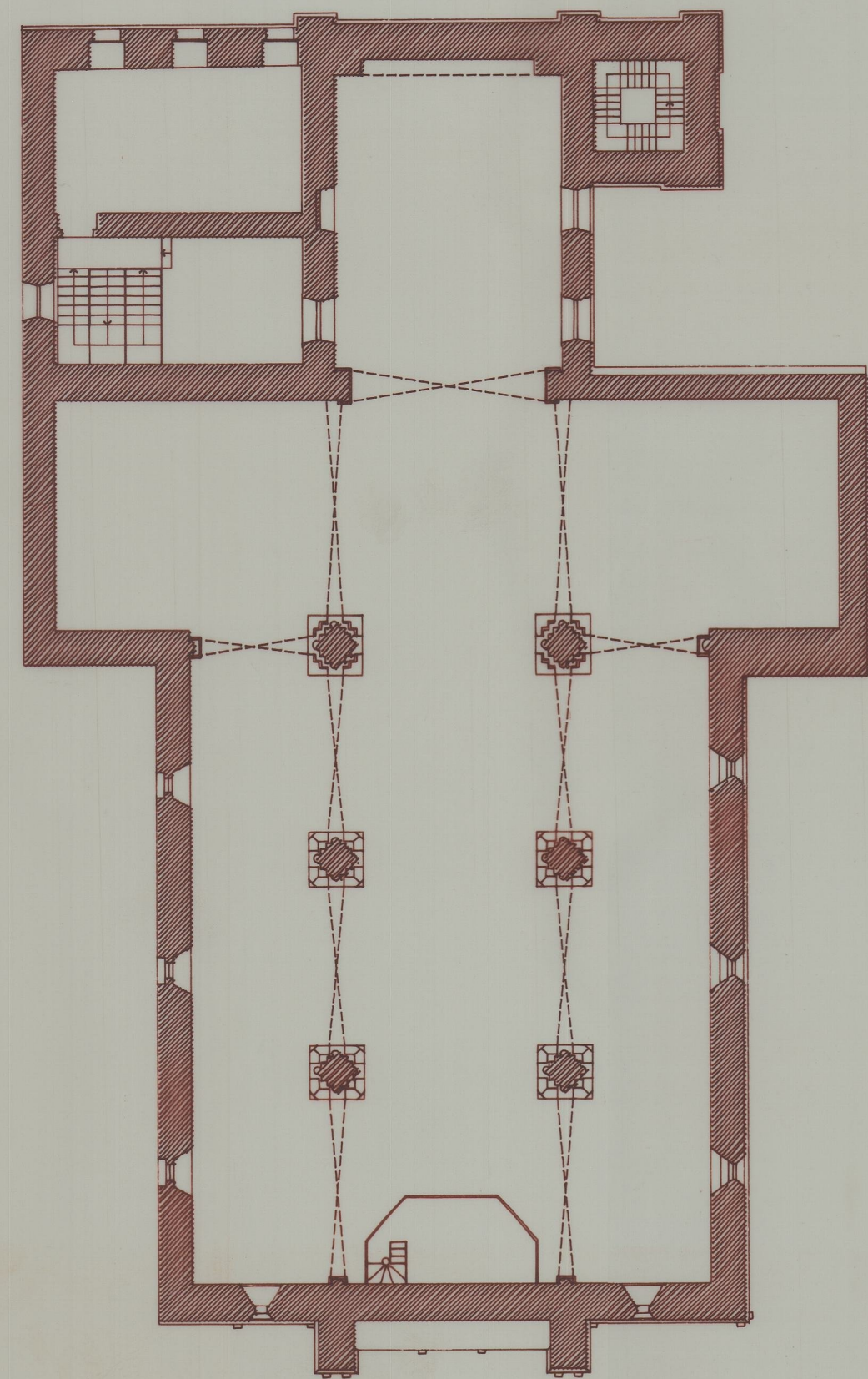
CORTE LONGITUDINAL



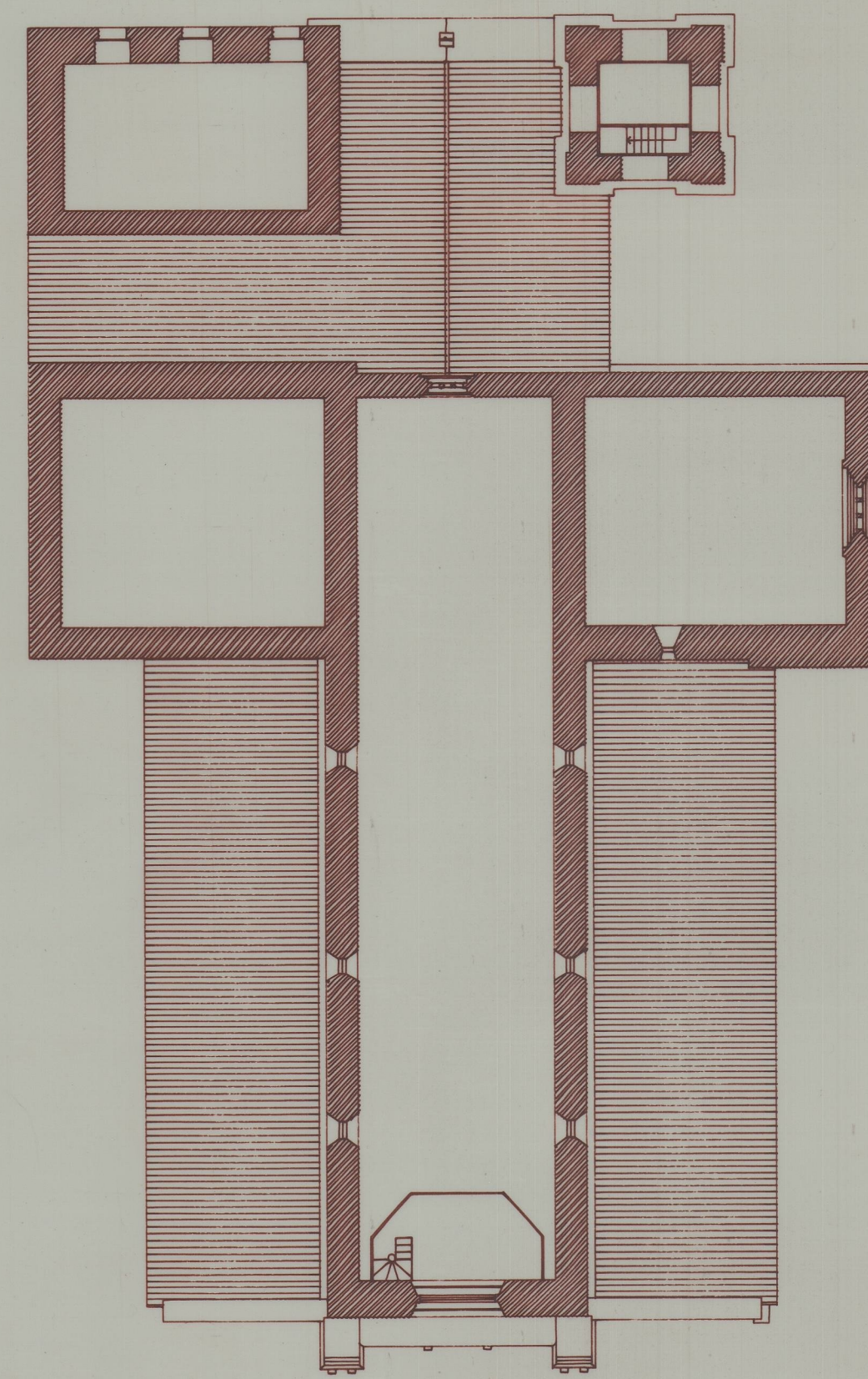
ALÇADO LATERAL SUL



PLANTA TERREA



PLANTA DAS NAVES LATERAIS



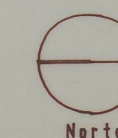
PLANTA DA NAVE CENTRAL



ALÇADO NASCENTE



ALÇADO POENTE



Norte

IPPAR  
IGREJA DE S. DOMINGOS - SÉ DE VILA REAL  
RECUPERAÇÃO DA IGREJA - PROJECTO DE EXECUÇÃO  
PLANTAS, CORTES E ALÇADOS

ABRIL 1997  
Escala 1/200

Humberto Vieira / Abílio Mourão - Arquitectos

es 471250 esta 1478  
41-C-2855