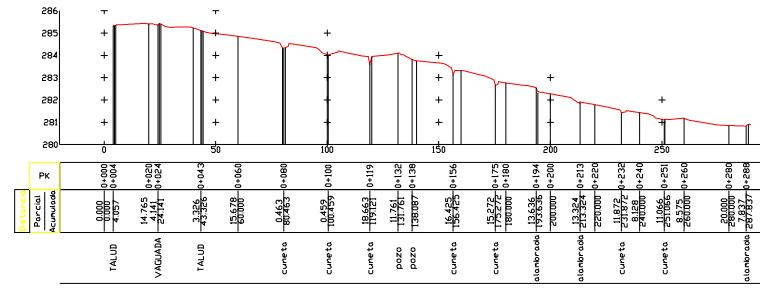
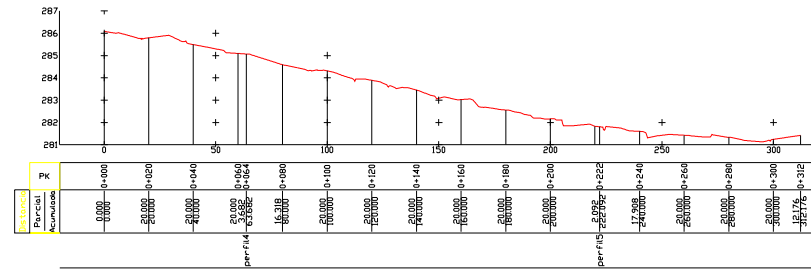


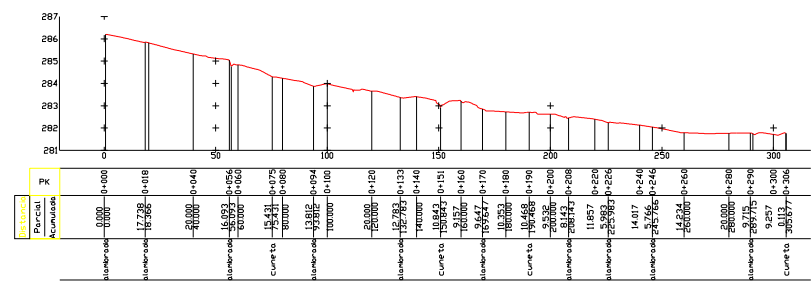
CORTE 1



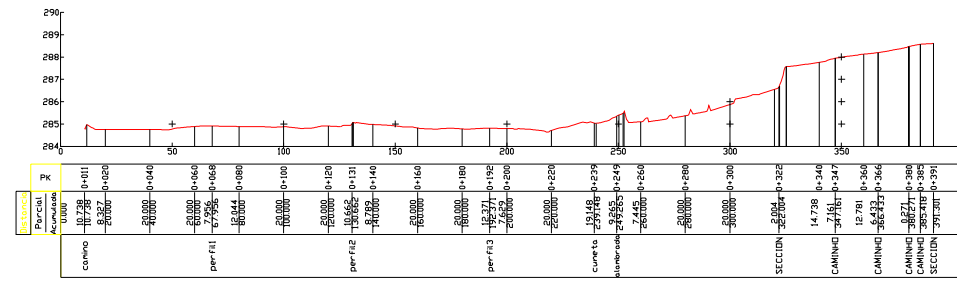
CORTE 2



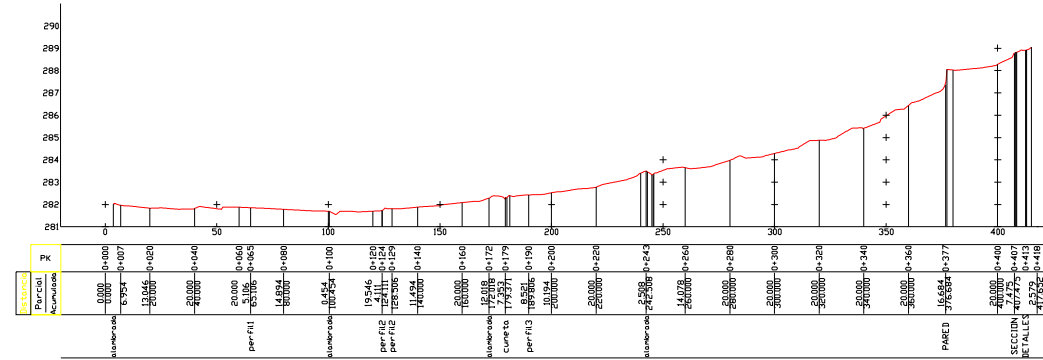
CORTE 3



CORTE 4



CORTE 5



LEVANTAMENTOS
ARQUITECTÓNICOS
e ARQUEOLÓGICOS

www.levantamentos.com
Tl + 34 924 9742 99
e-mail: levantamentos@gmail.es

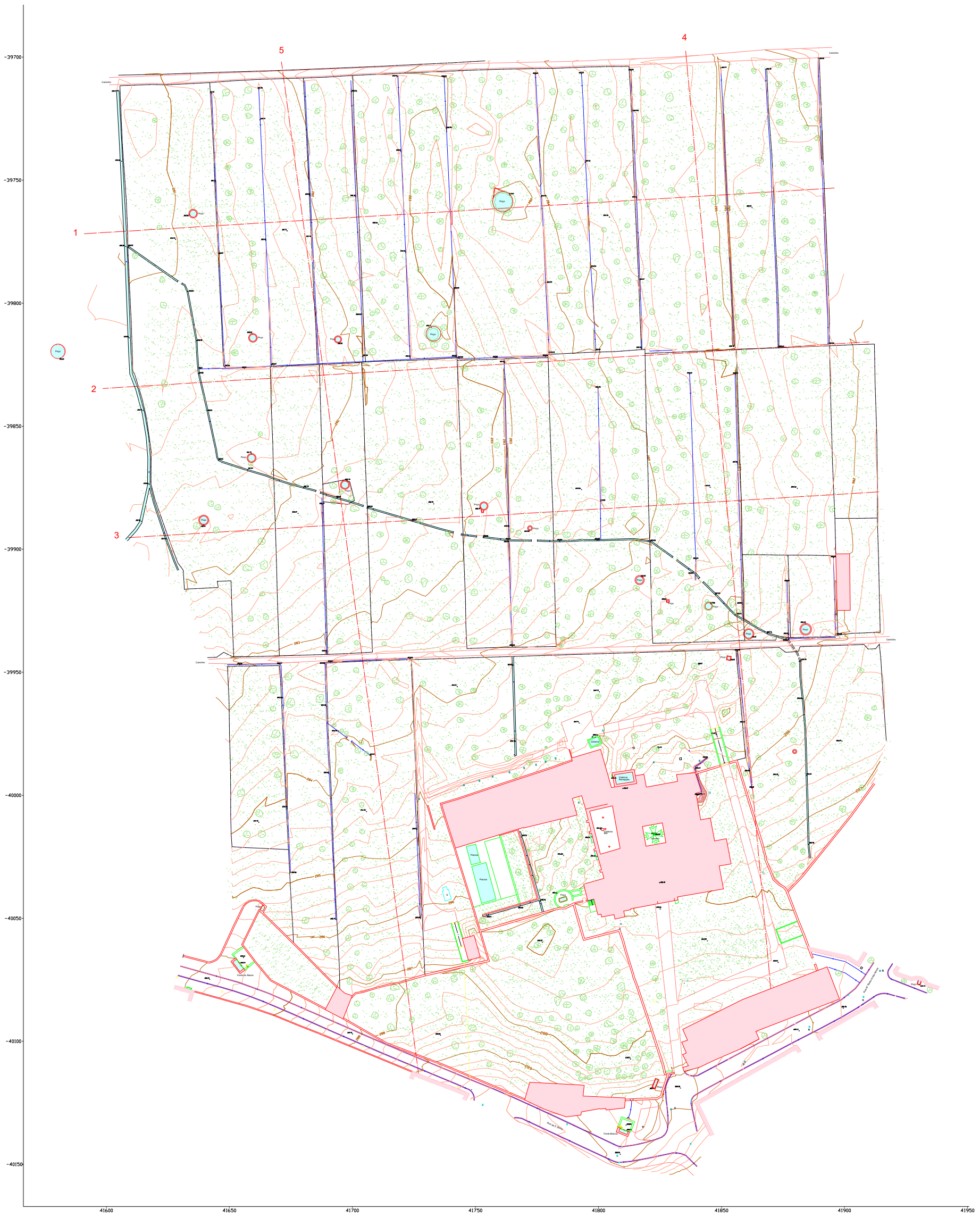
LEVANTAMENTO TOPOGRÁFICO
MOSTEIRO FLOR DA ROSA
MARÇO - 04

DESENHO:
CORTES

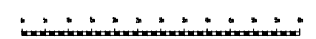
IPPAR Évora

Nº: **2**

ESCALA HORIZONTAL
1:1500
ESCALA VERTICAL
1:150



ESCALA GRÁFICA



Equidistancia: 0.20 m
Sistema de Coordenadas: Hayforf Gaus Datum 73



AR
LEVANTAMENTOS
ARQUITECTÓNICOS
e ARQUEOLÓGICOS

www.levantamientos.com
Tf: +34 924 97 42 86
e-mail: levantamientos@levantamientos.com

LEVANTAMENTO TOPOGRÁFICO MOSTEIRO FLOR DA ROSA MARÇO - 04	
DESENHO: PLANTA GERAL	Nº: 1
IPPAR Évora	ESCALA 1:750