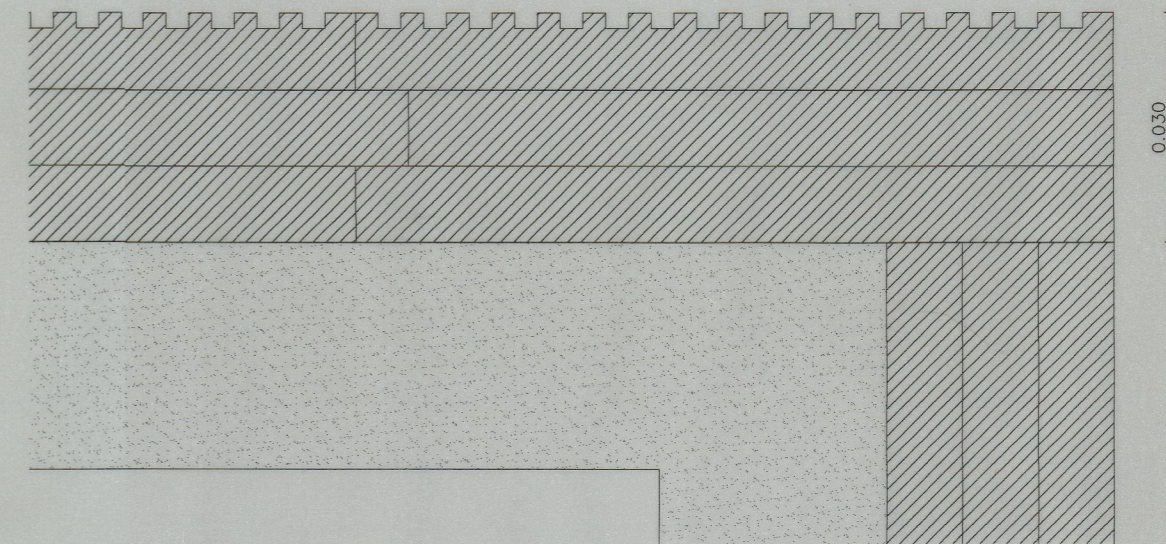
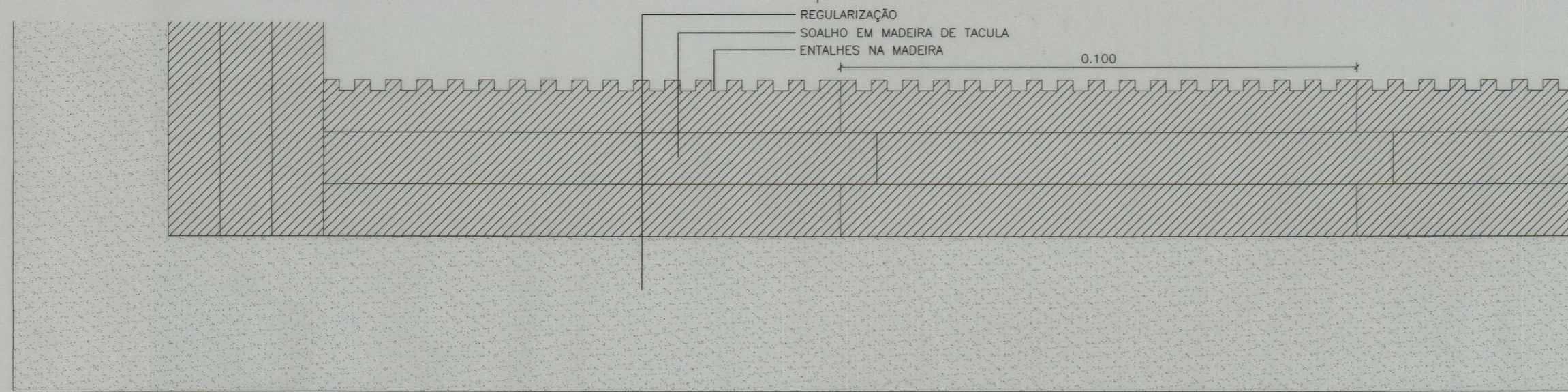
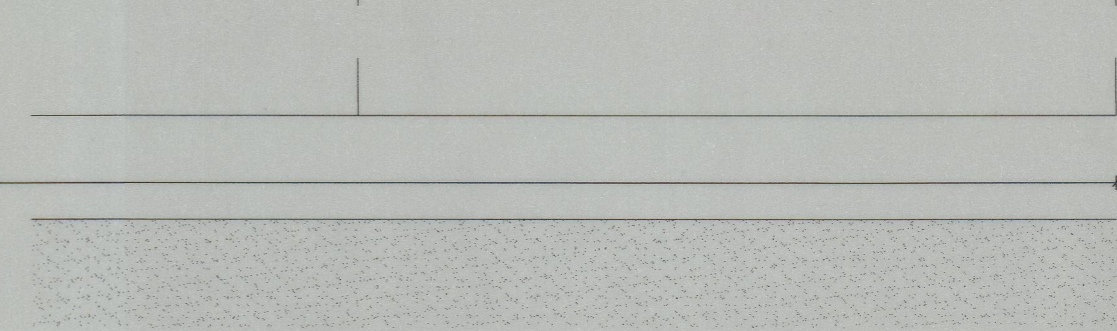
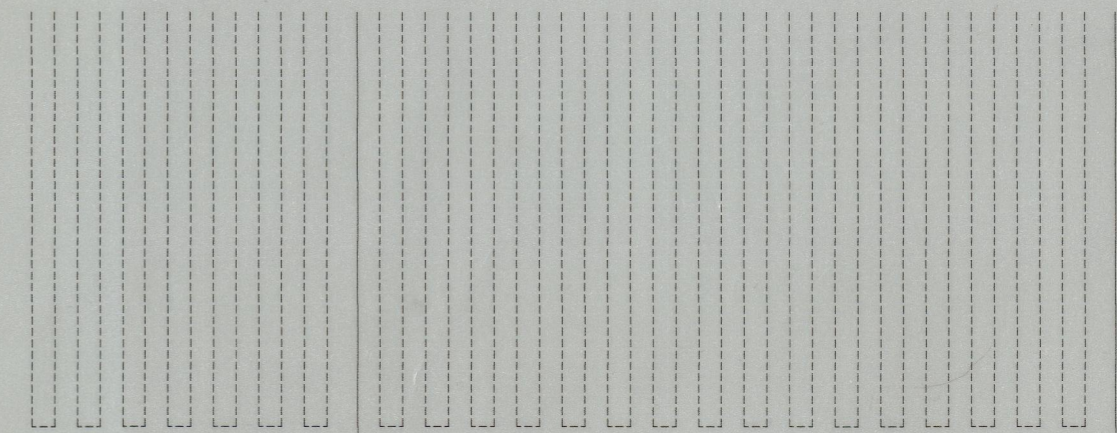
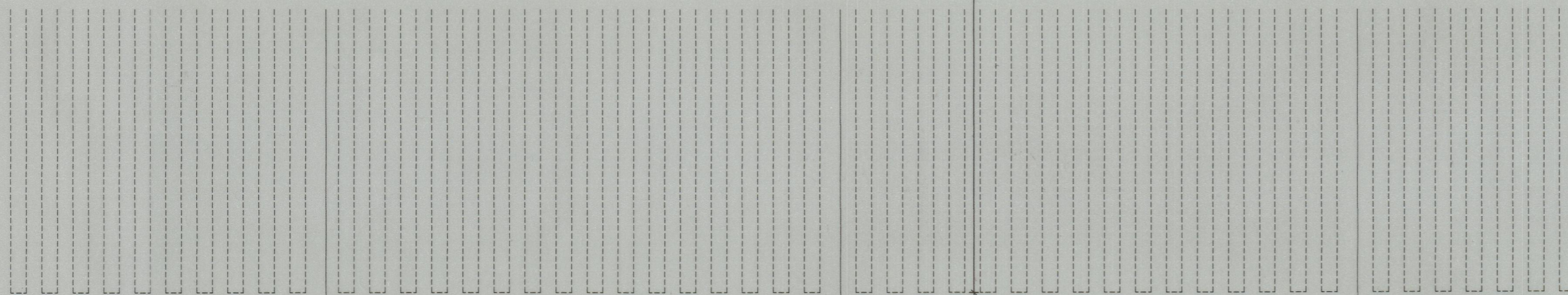
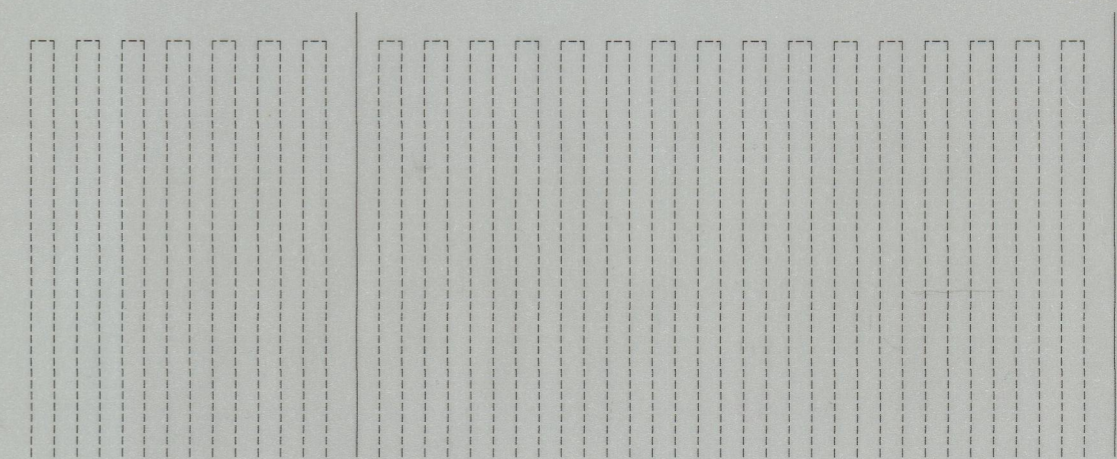
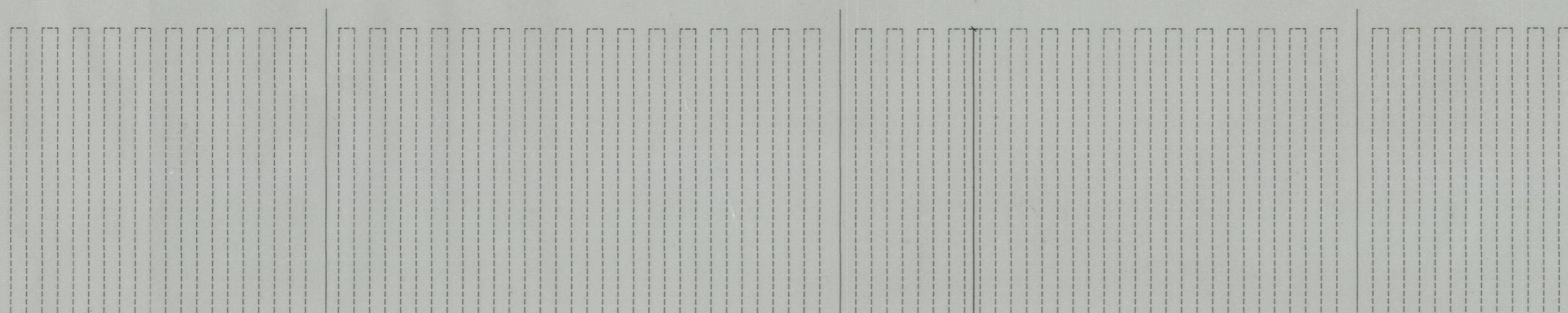


41-6348



CORTE



PLANTA

| | | |
|--|----------------------------------|----------------|
| SOUTO MOURA - ARQUITECTOS, LDA | resp. | col |
| S.E.C. - SECRETARIA DE ESTADO DA CULTURA | | |
| PROJECTO DE EXECUÇÃO - CARPINTARIAS | ESC. 1:1 | FEVEREIRO 2000 |
| PAVIMENTOS - PORMENOR DOS DEGRAUS DO AUDITÓRIO | Nº ficheiro/Nº desenho : P-AUDIT | 36 |