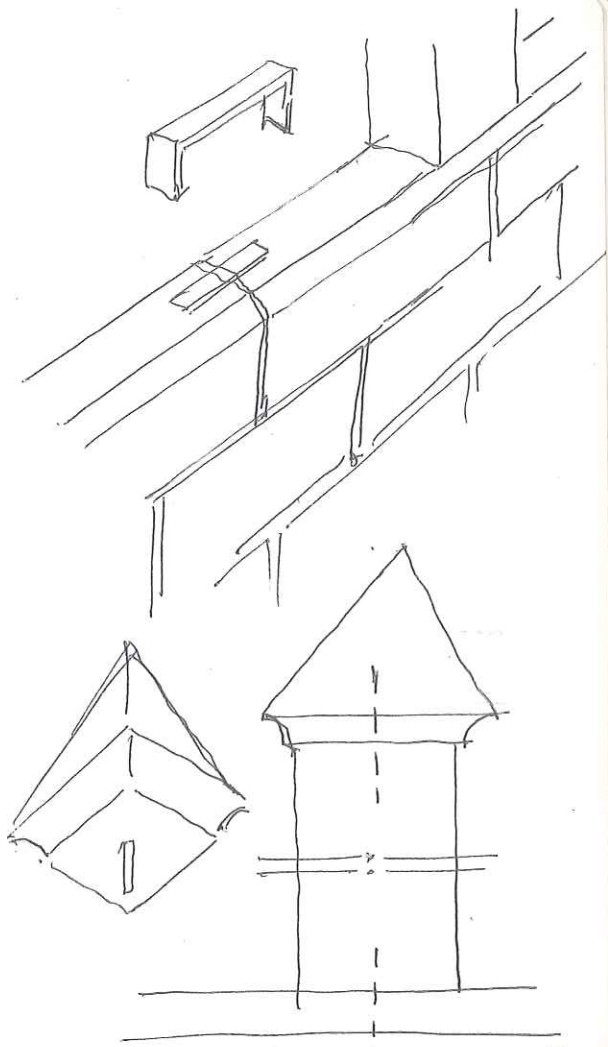


TORRE MENAGEM BEJA
BALCÃO MATA CÃES



C.M. Prato / EA 241

M^g: Marco Carmo 266619030

Proc. 154/13 - Prof. J. Raposo

O Proj. Foi aprovado em 3^o MV em 1^a Turma
de Câmara, o valor pode ser levantado

EA 248. Adt. 2

Despesas: $\frac{71 \text{ horas}}{206} = 1.140 \text{ €}$
HONORÁRIOS - 57 horas $\frac{256}{256} = 1.425 \text{ €}$

PAPEL

A4 Preto - 31 - 2,976 €

" COR - 24 - 23,976 €

A3 COR - 8 - 15,184 €

PAPEL METRO - 25,40 ml = 54,864 €

DOBRAQUIM - 64 FOLHAS = 22,464 €

CORTE - 64 FOLHAS - 16,00 €

TOTAL PAPEL - 735,464 €

7560,00 €

312,00 € x DV.

7.872,00 €

500,00 € COORD.

2.372,00 €

x 1,23 = 2.917,56 €

TABELA CÓPIAS

A4 PRETO - 0,096

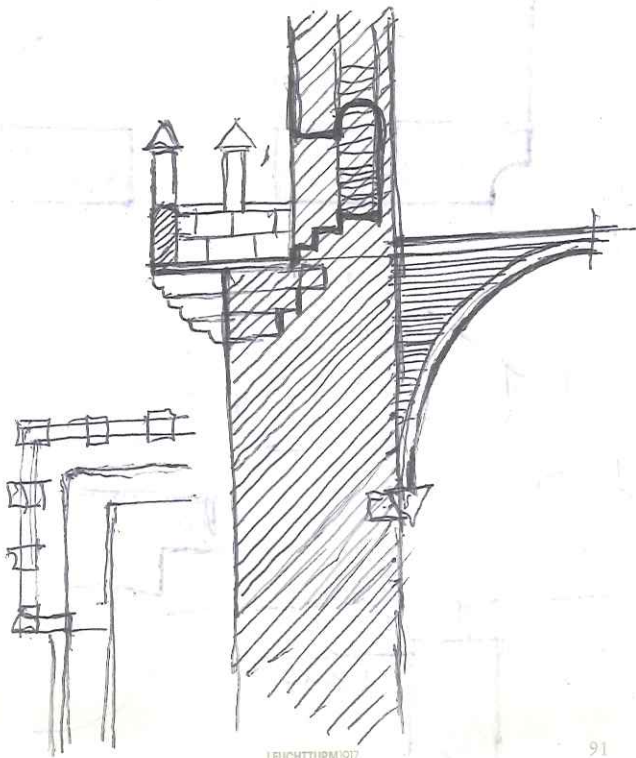
" COR - 0,999

A3 COR - 1,898

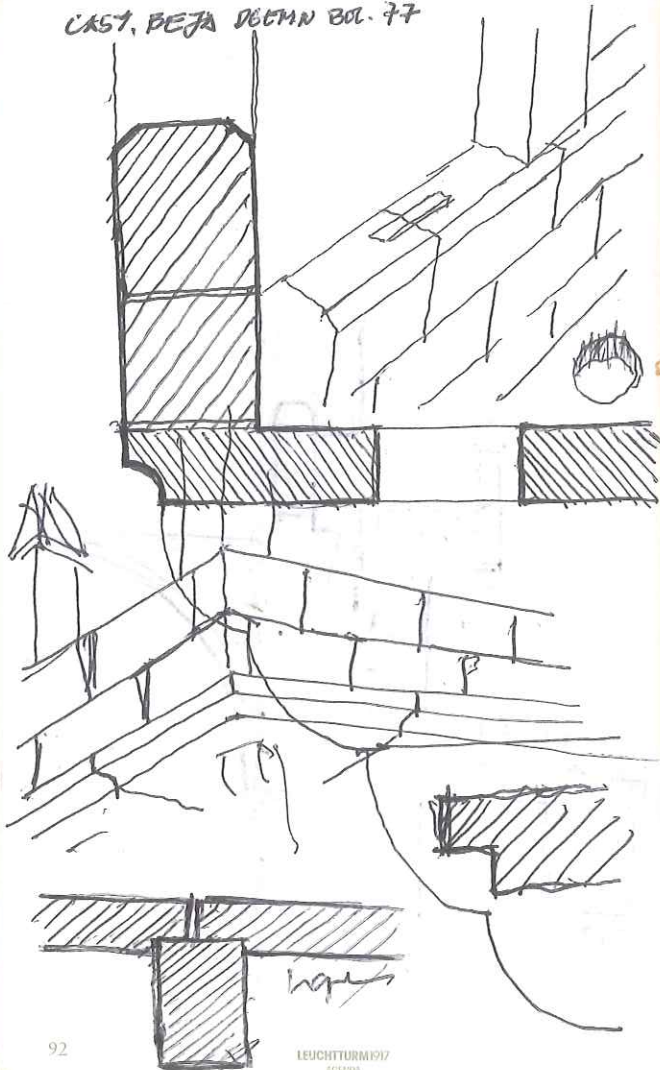
PAPEL METRO - 2,16

DOBRA - 0,55 €

CORTE - 0,25 €



CAS7, BEJA DECEM 80L. 77



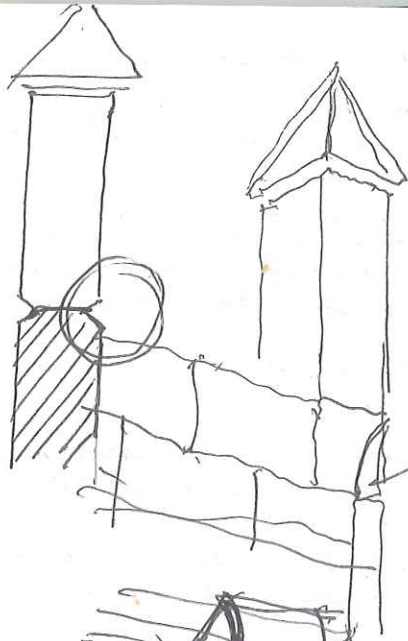
92

LEUCHTURM 1917
AGENDA

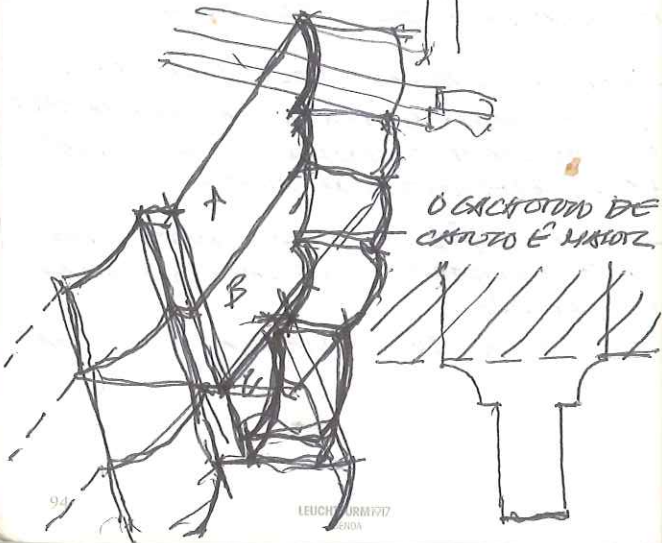
- INSPECÇÃO VISUAL DA OPORTUNIDADE.
- PISO TELA DO LOCAL E DAS PEÇAS ALIADAS E DEFINIÇÃO DE UM PERÍMETRO DE SEGURANÇA.
- REGISTO DIGITAL DO OCORRIDO.
- VERIFICAÇÃO DAS CONDIÇÕES DE ESTABILIDADE E SEGURANÇA DOS ELEMENTOS ZENITALES, E DA ZONA DE SEGURANÇA DEFENIDA.
- INVENTARIAÇÃO DA SITUAÇÃO E DOS DANOS VERIFICADOS.
- INVENTARIAÇÃO E CATALOGAÇÃO DAS PEÇAS ALIADAS, E TRANSPORTE PARA LOCAL DE RESERVA.
- ESCORAMENTO DE ELEMENTOS INSTÁVEIS E CRIAÇÃO DE ACESSOS SEGUROS.
- LEVANTAMENTO DA SITUAÇÃO E DAS NECESSIDADES DE INTERVENÇÃO IMEDIATA, PARA ESTABILIZAÇÃO DO CONJUNTO E SALVAGUARDA DE ELEMENTOS NOTÁVEIS.
- DETERMINAÇÃO DAS NECESSIDADES DE INTERVENÇÃO E DAS ESPECIALIDADES ENVOLVIDAS.
- DEFINIÇÃO DA INTERVENÇÃO A REALIZAR.

LEUCHTURM 1917
AGENDA

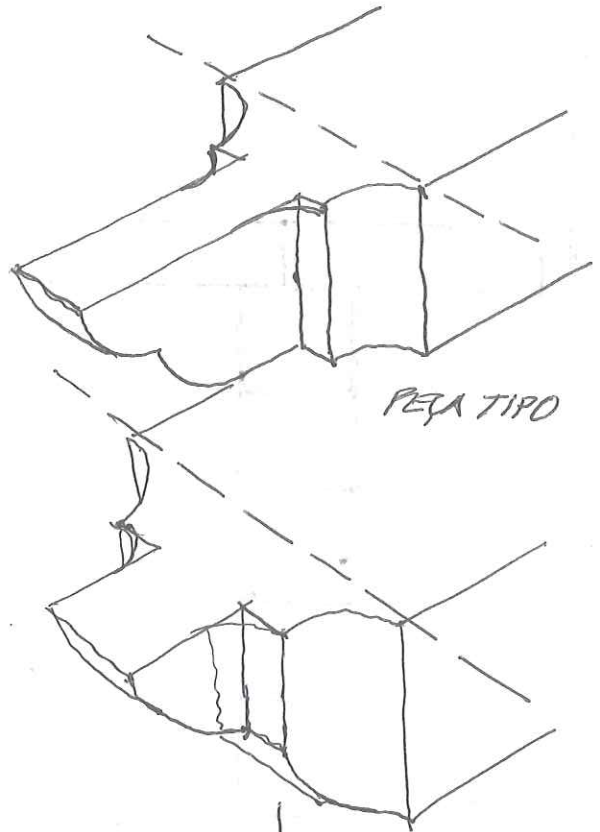
93



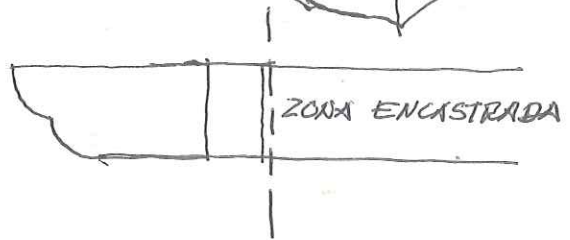
Señala
Unia?



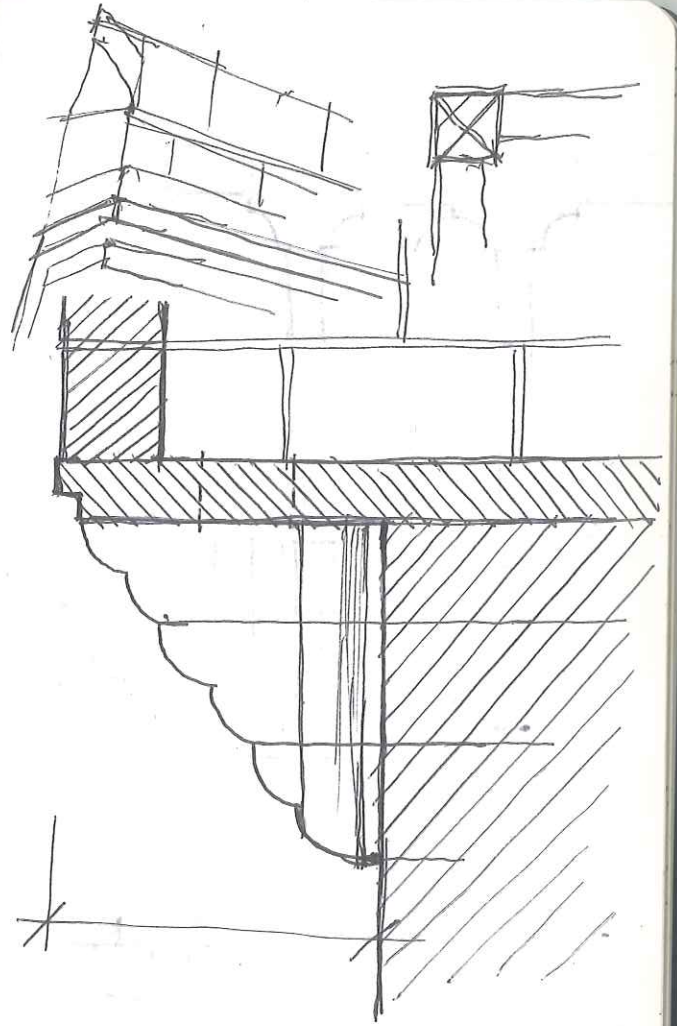
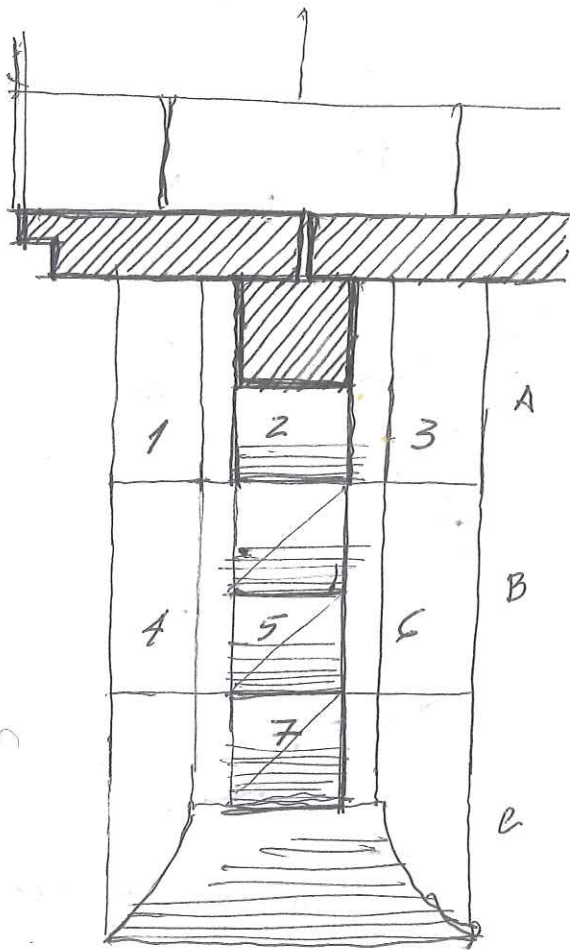
O CACHOTO DE
CANTO É MISTOZ

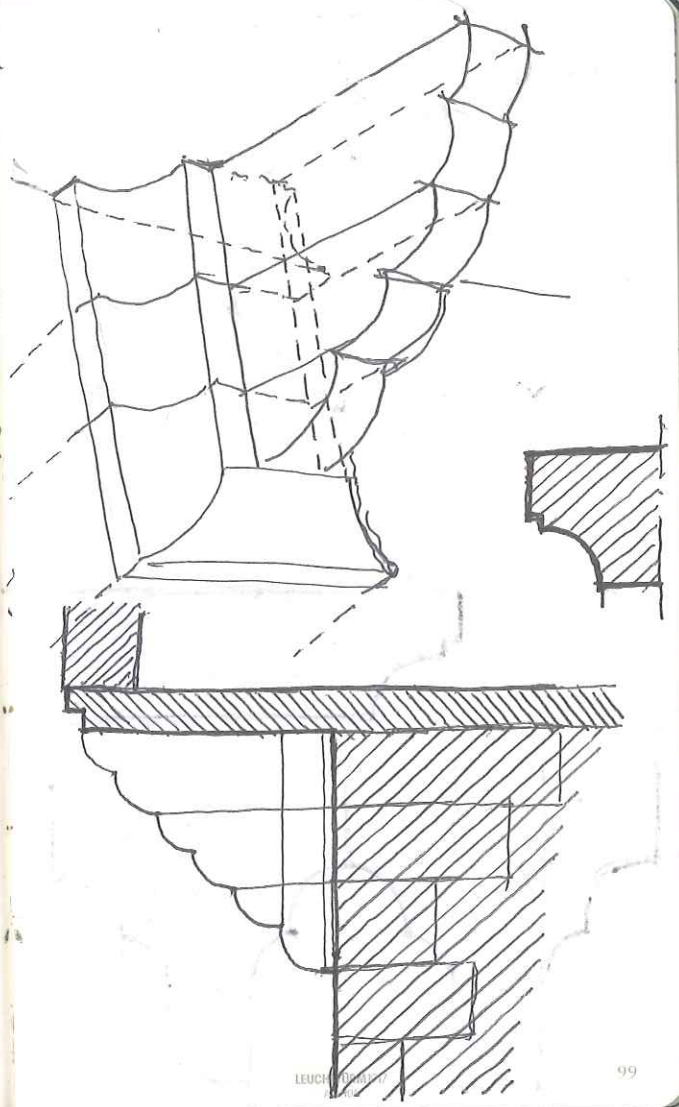
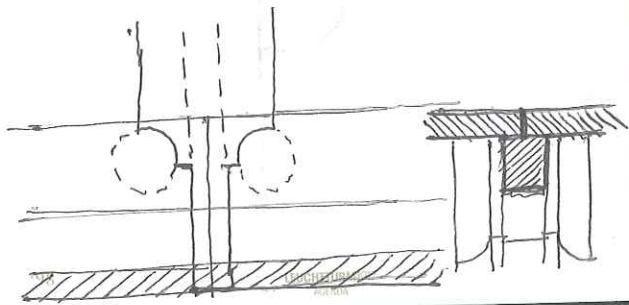
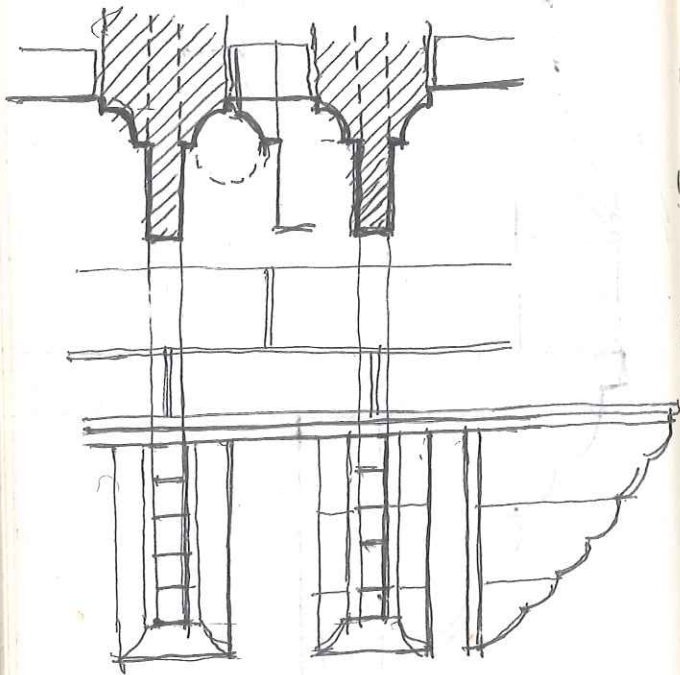


PEÇA TIPO



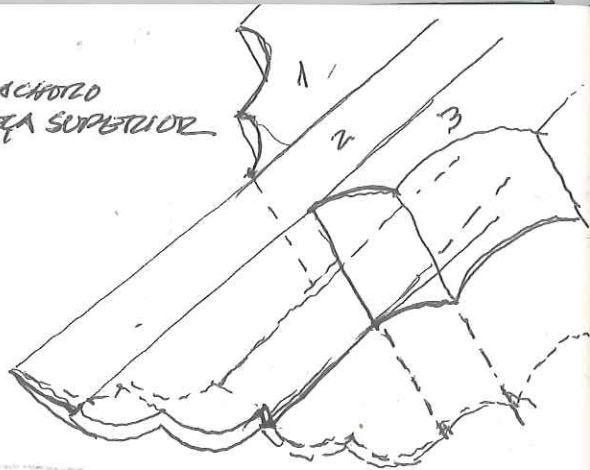
ZONA ENCASTRADA



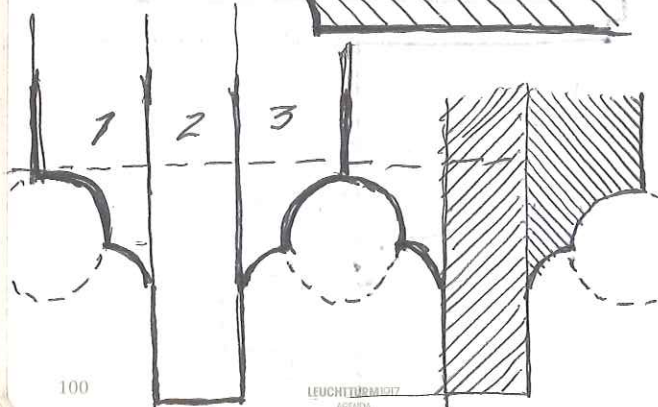
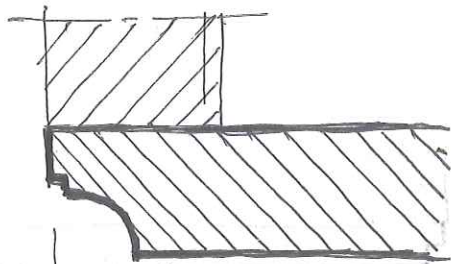


LEUCHT

CACHOTO
PEÇA SUPERIOR

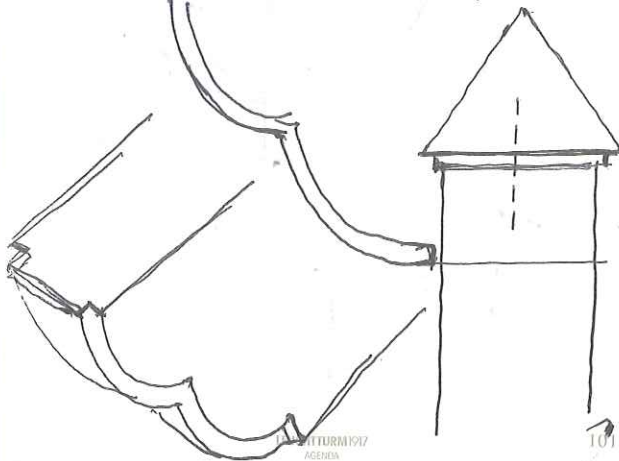
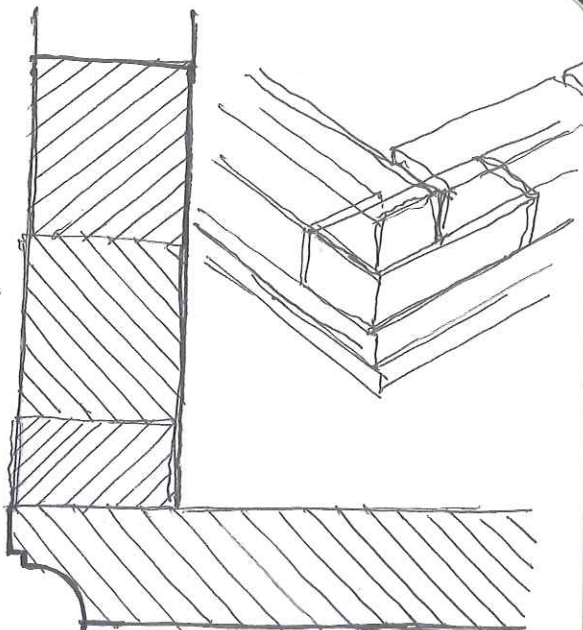


LAGE



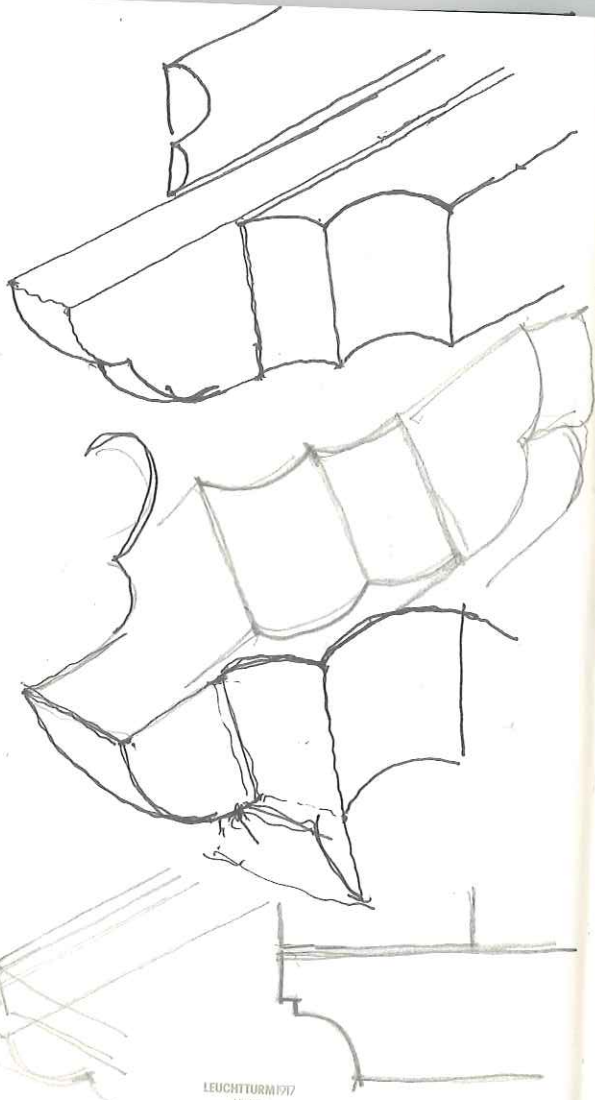
100

LEUCHTURM 1917
AGEMA



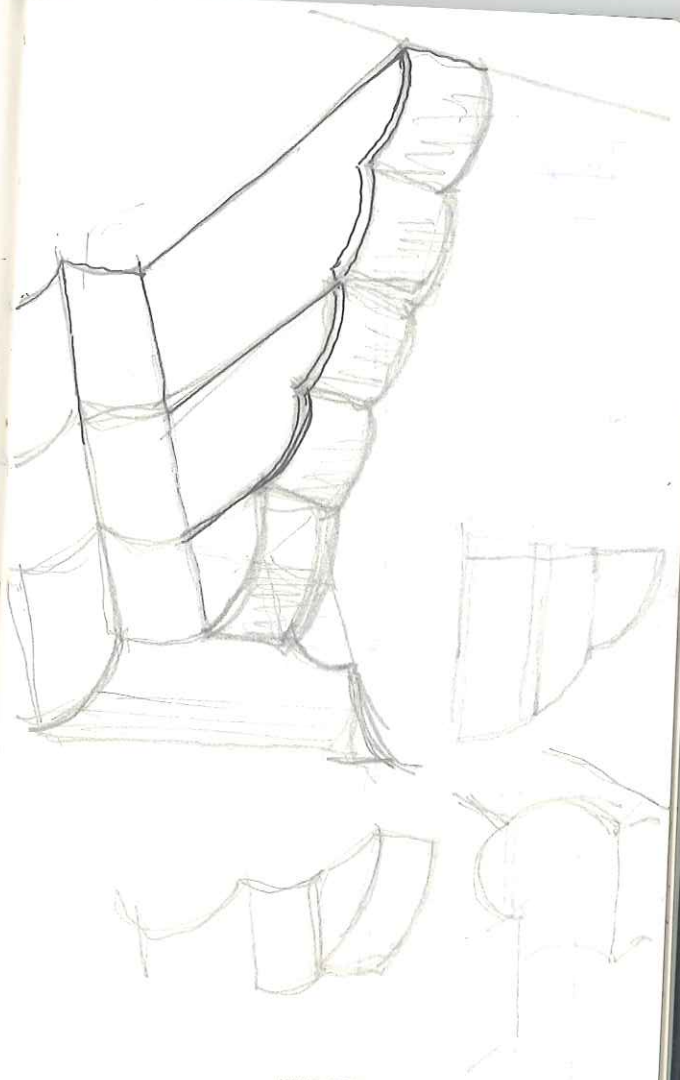
101

LEUCHTURM 1917
AGEMA



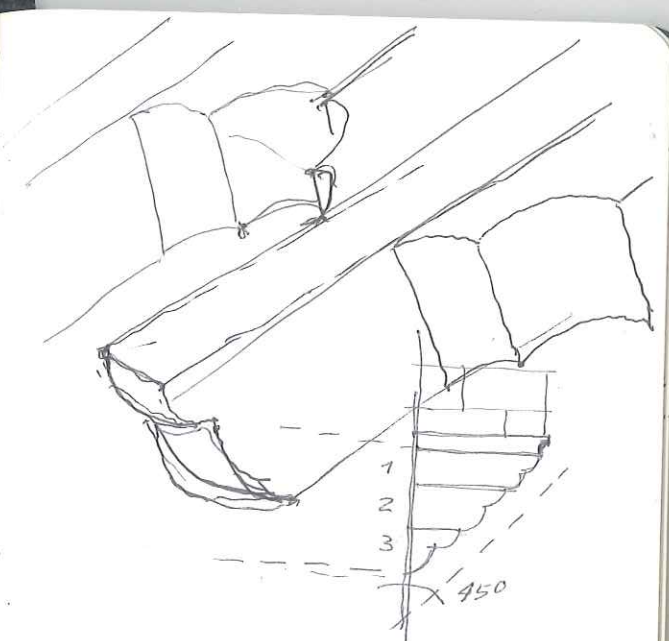
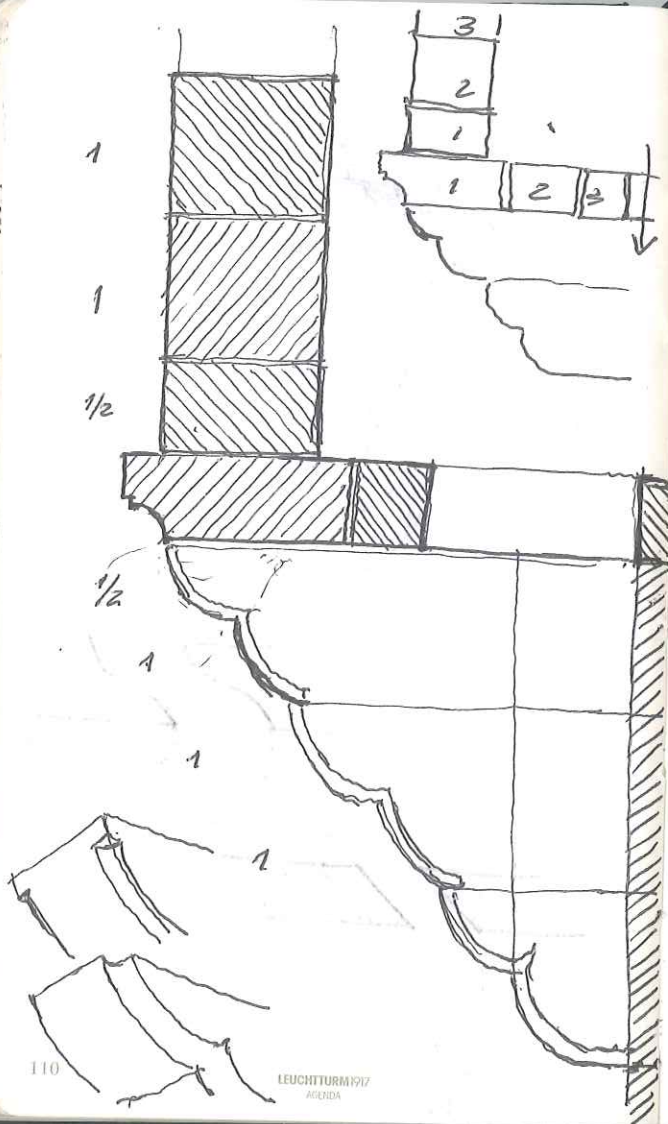
104

LEUCHTTURM 1917
AGENDA



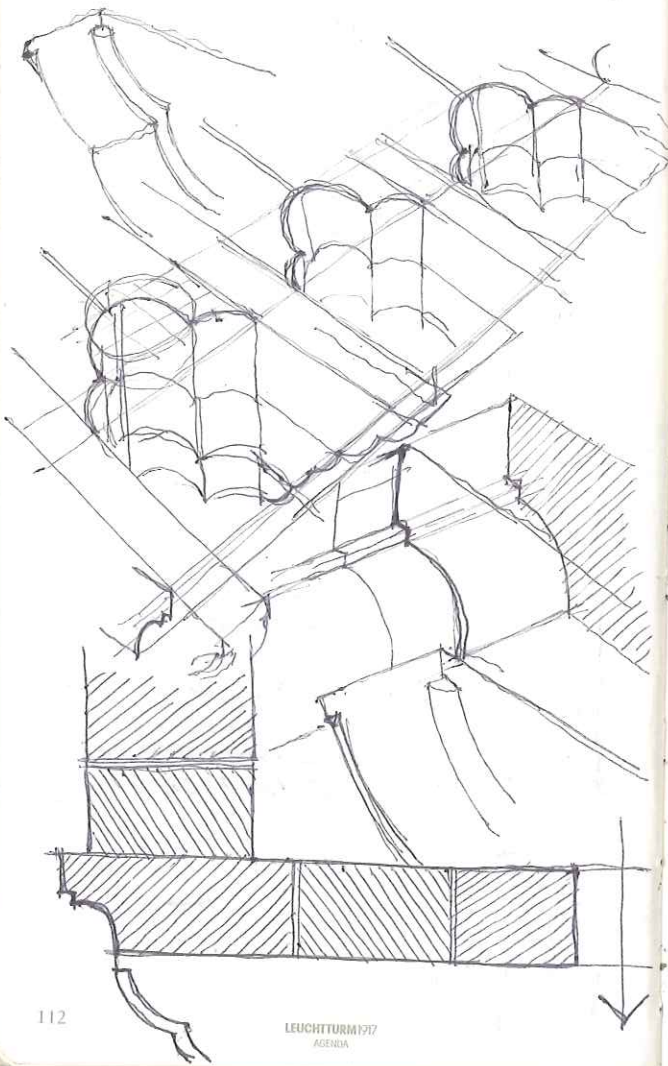
LEUCHTTURM 1917
AGENDA

105



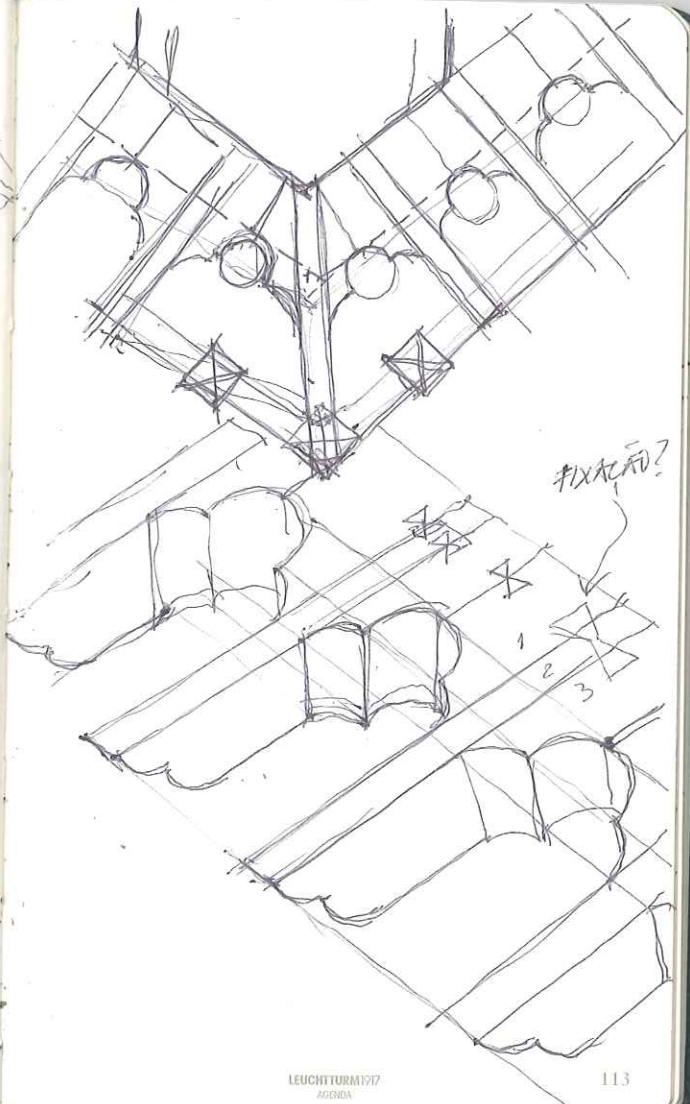
A CORUJOLA DO CANTO
 É MAIOR MAS COM O
 ARRANQUE NO MESMO
 LOCAL. O ÂNGULO É MAIOR
 E O STRESS NAS PEÇAS
 É SUPERIOR. E TEM MA
 IOR PROP. DE PARTIR.





112

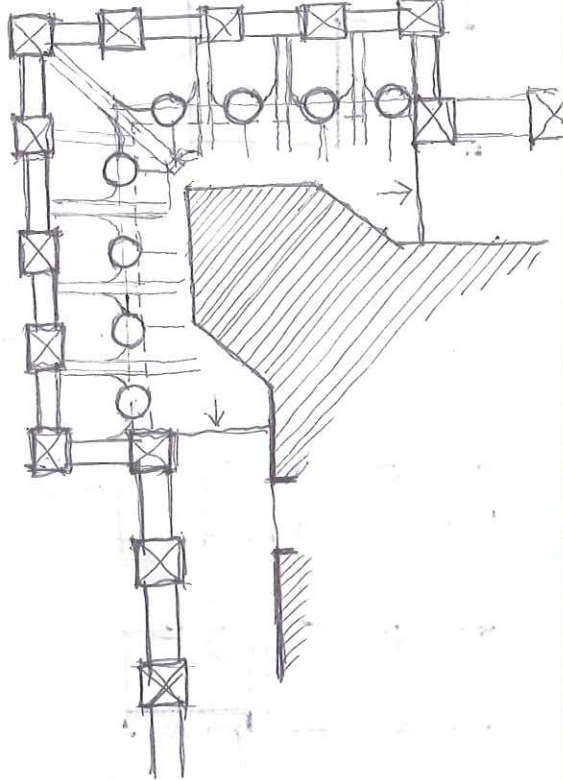
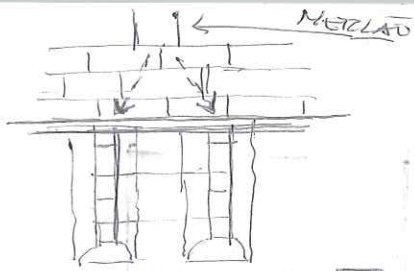
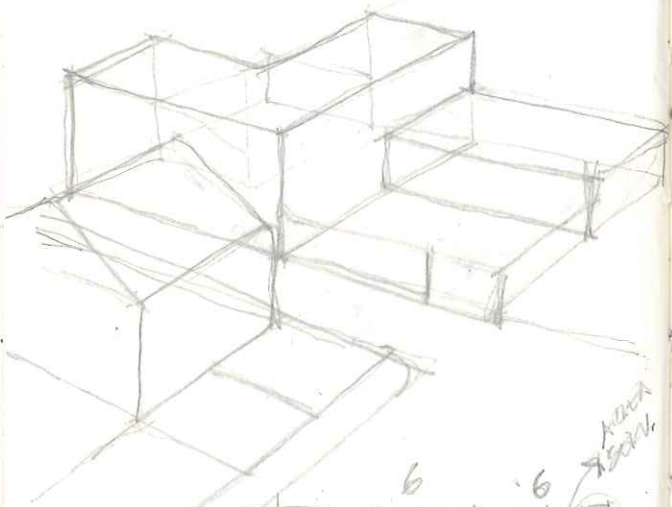
LEUCHTTURM1917
AGENDA

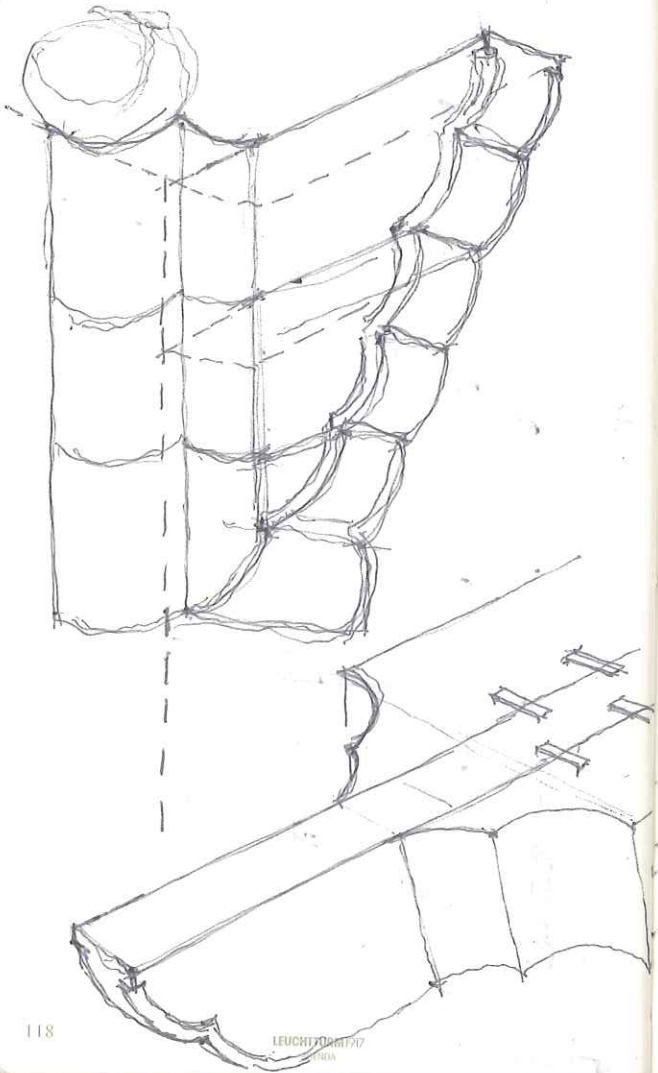


113

LEUCHTTURM1917
AGENDA

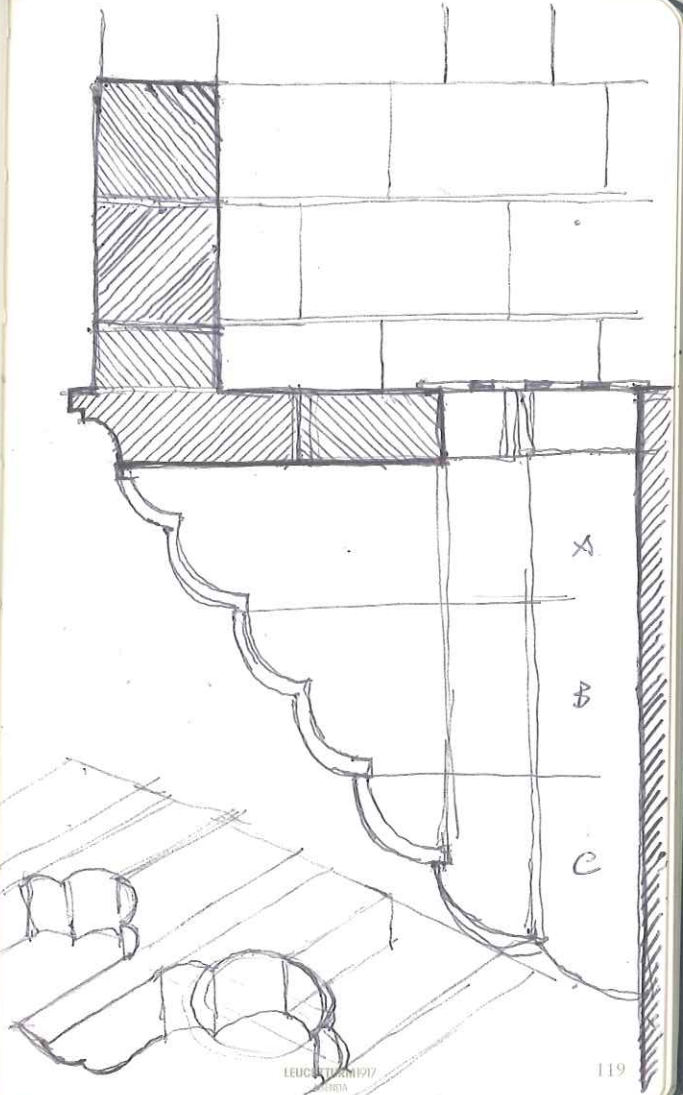
CASA CONDITA 11/11/12





118

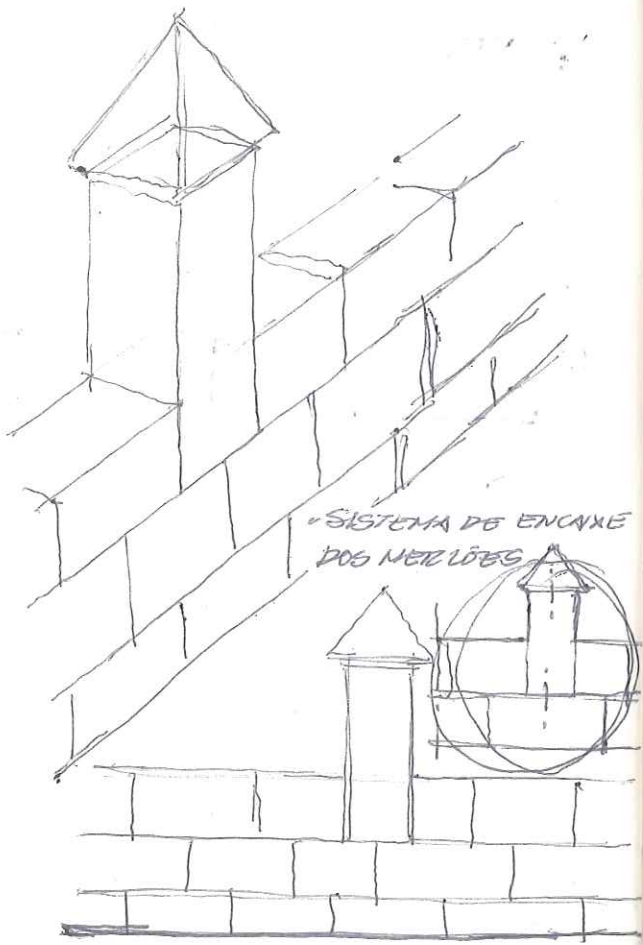
LEUCHTDRUCK 1977
MÜNCHEN



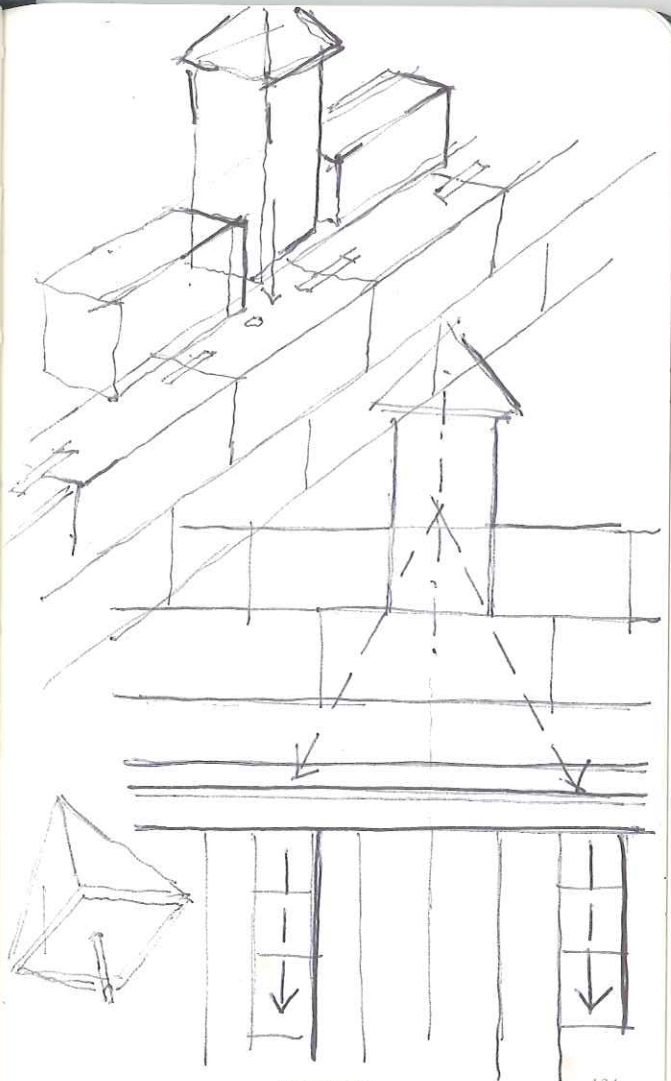
A
B
C

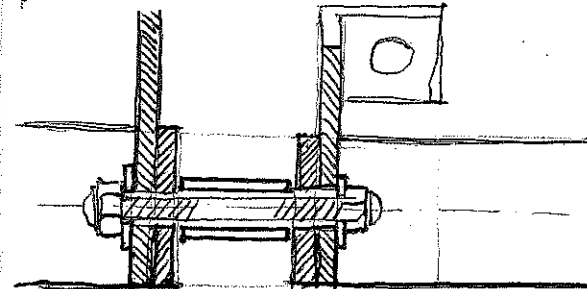
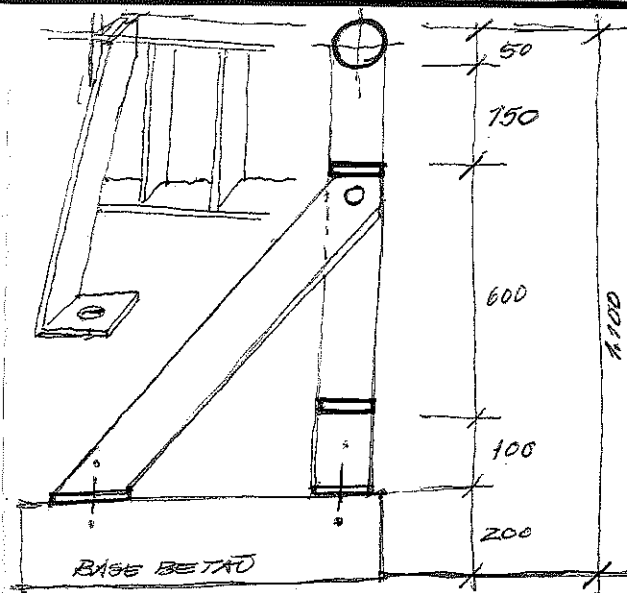
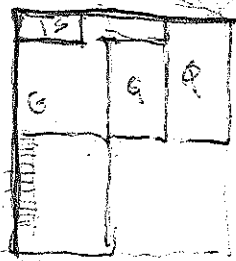
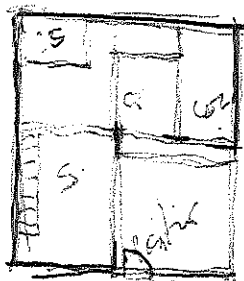
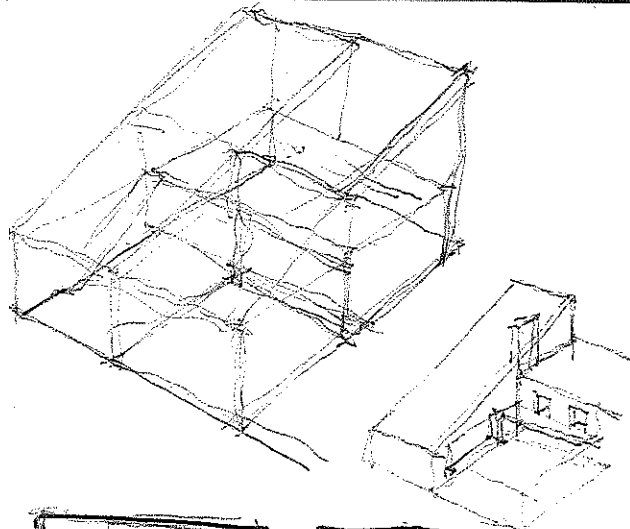
119

LEUCHTDRUCK 1977
MÜNCHEN

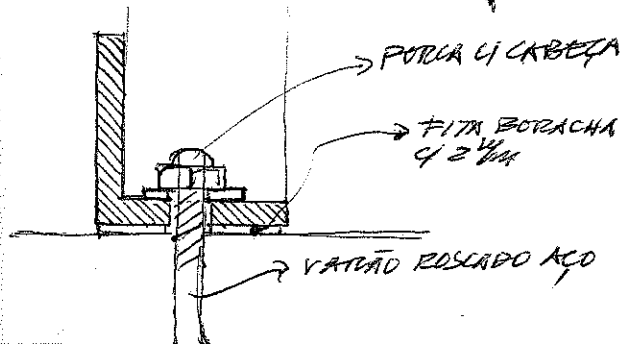
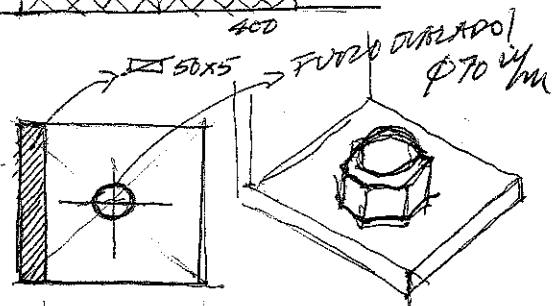
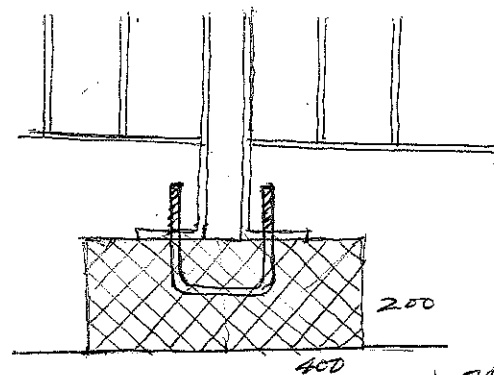
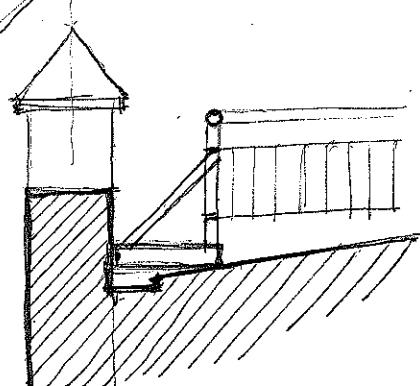
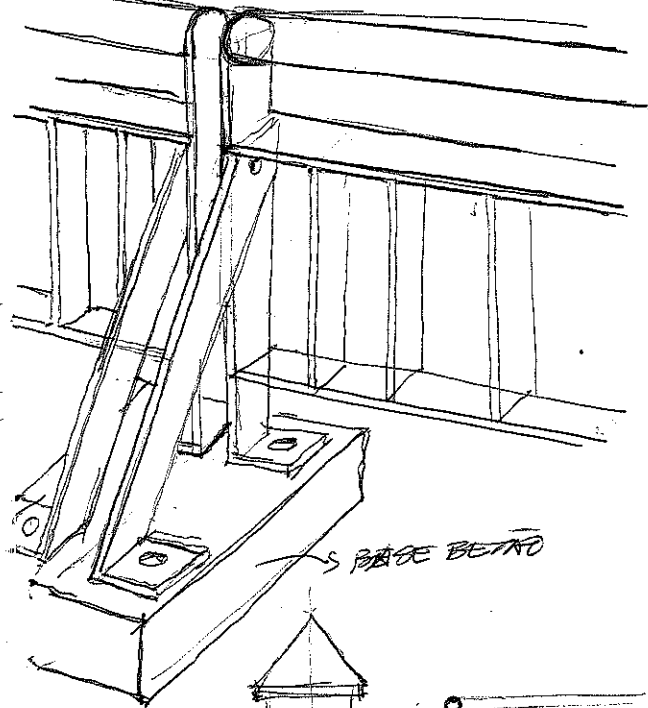


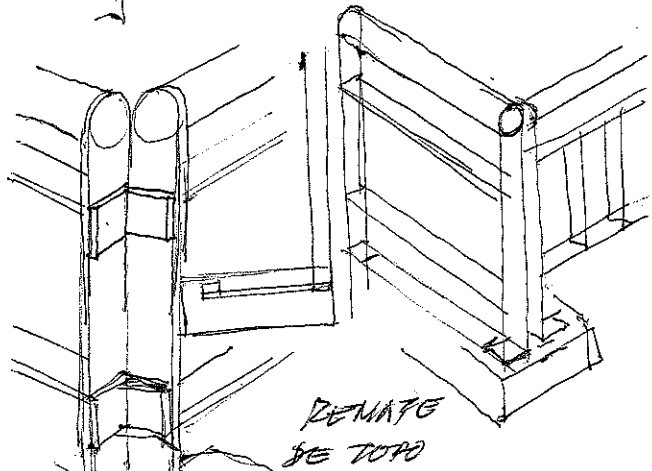
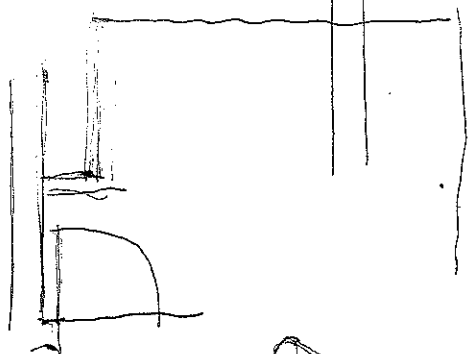
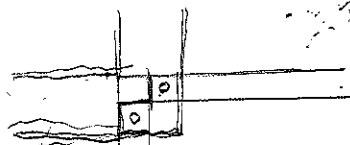
SISTEMA DE ENCAIXE
DOS NETZ LÖSB



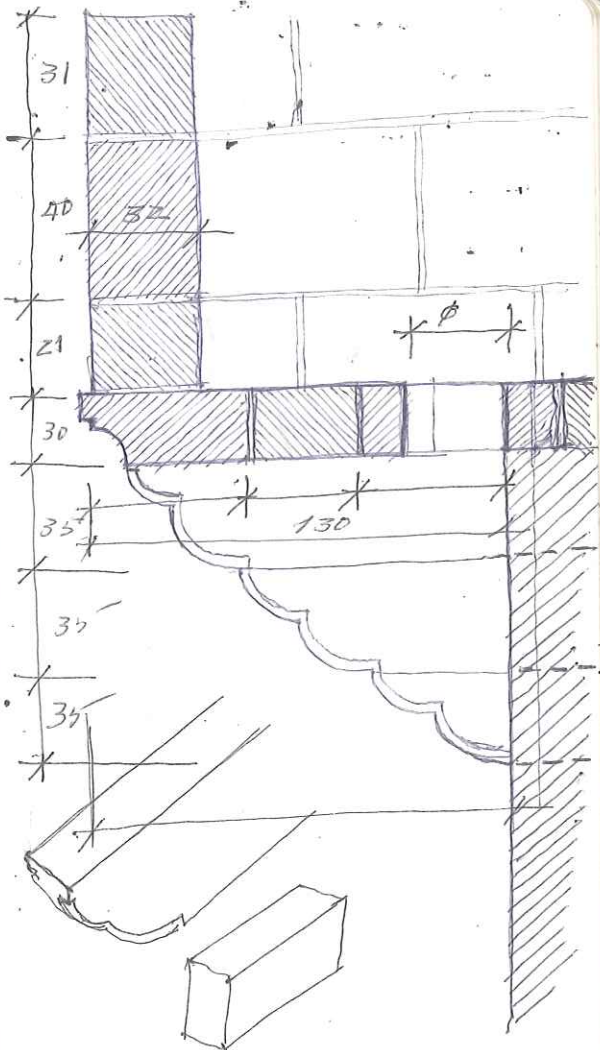


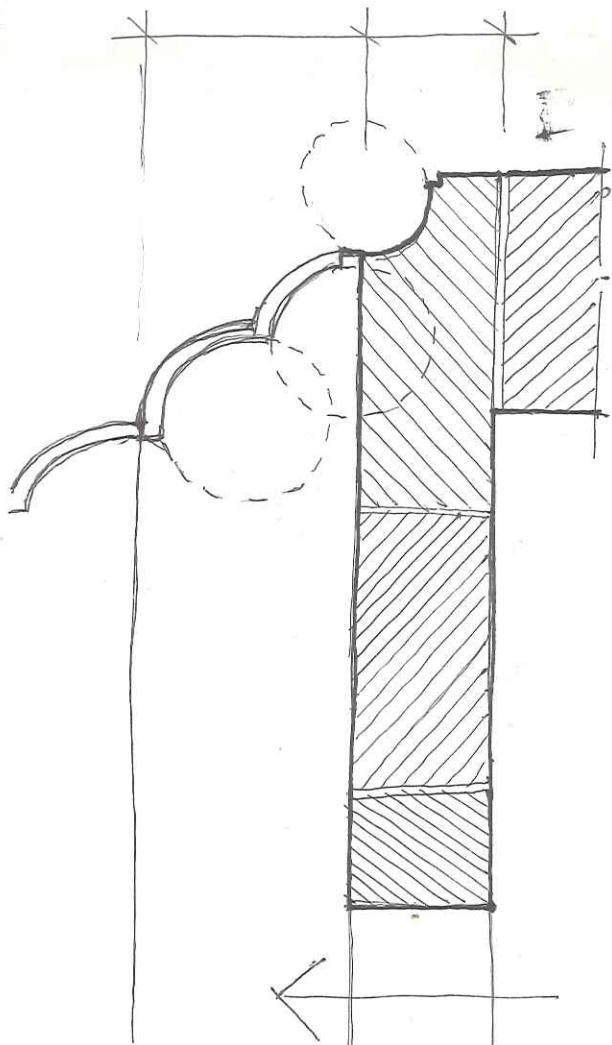
FIXAÇÃO ENTRE GRADES





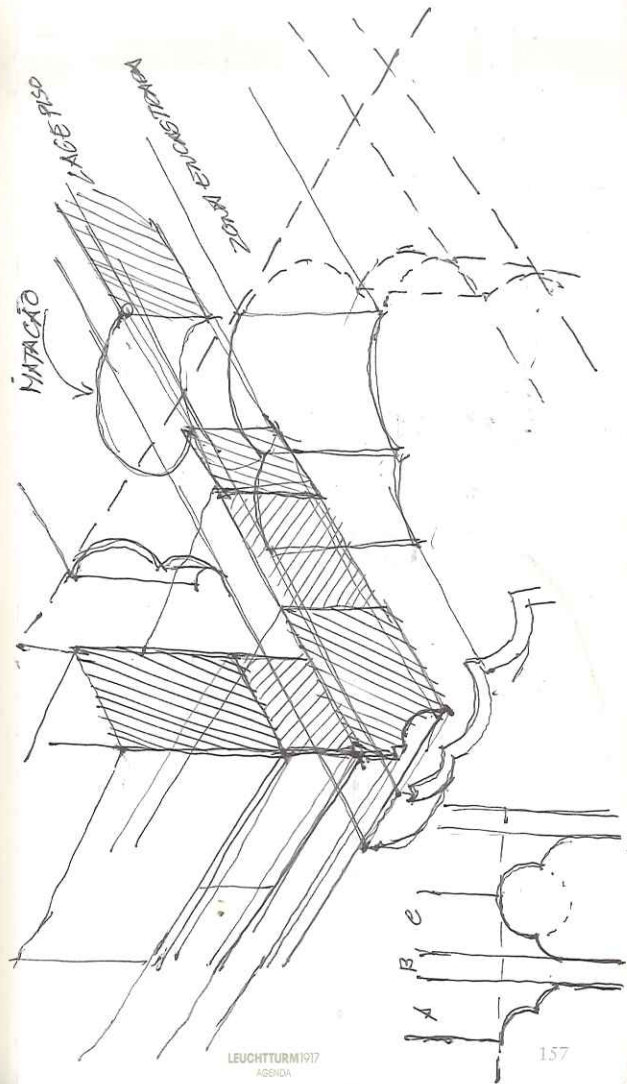
REMARKS
SEE TOP





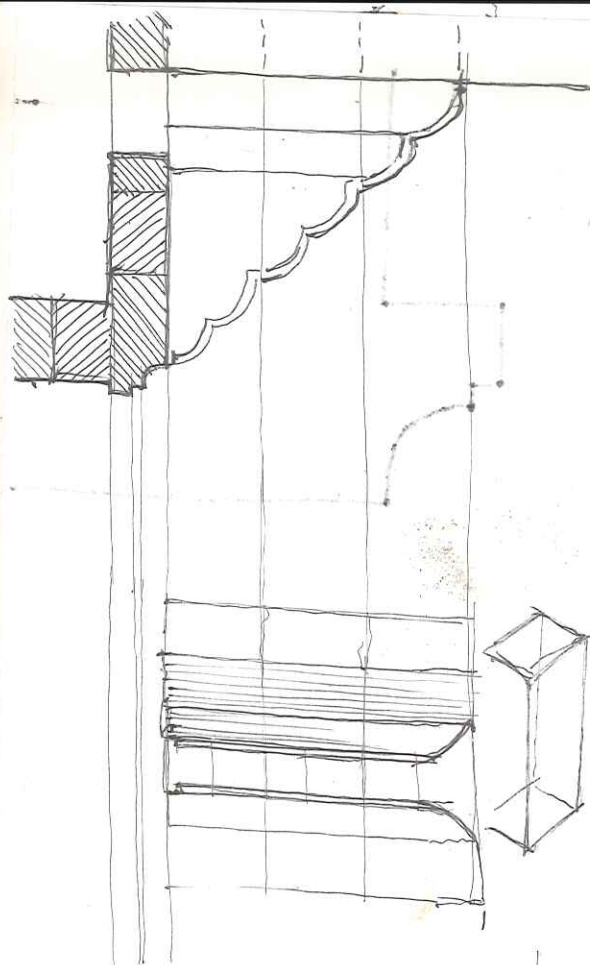
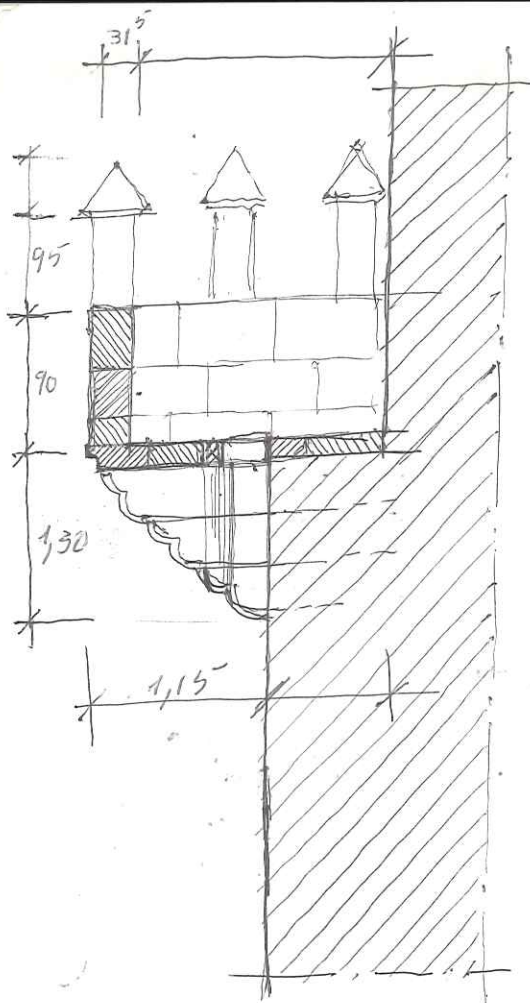
156

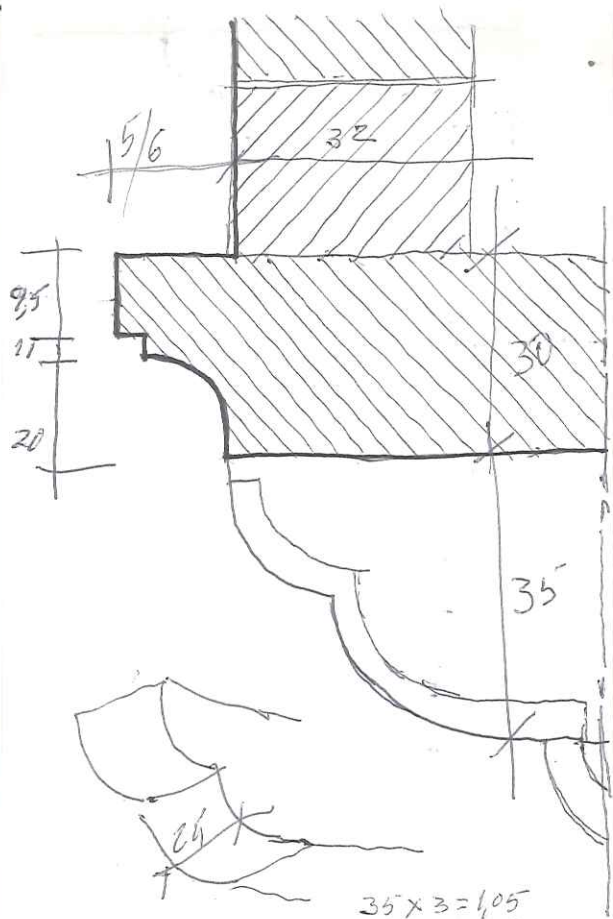
LEUCHTTURM 1917
AGENDA



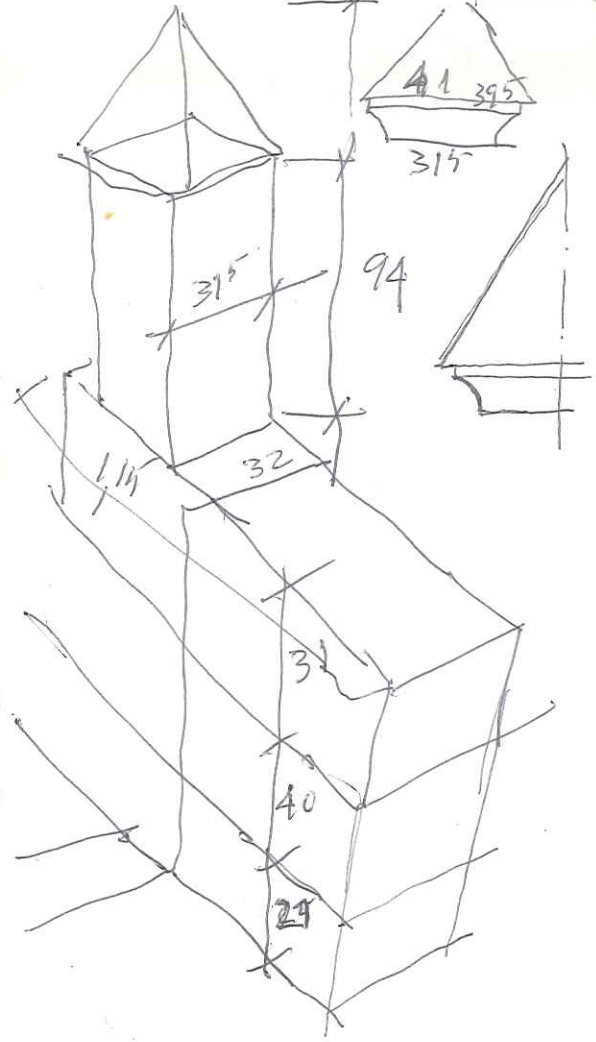
LEUCHTTURM 1917
AGENDA

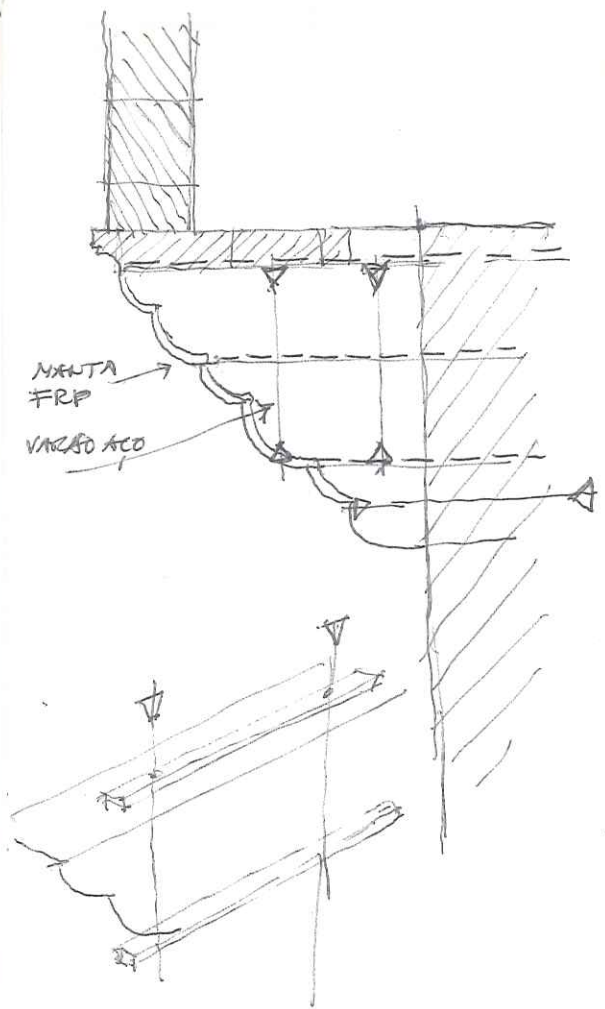
157



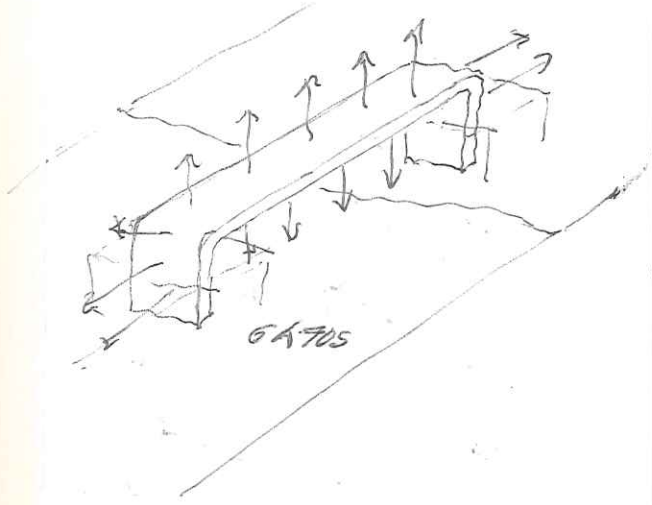
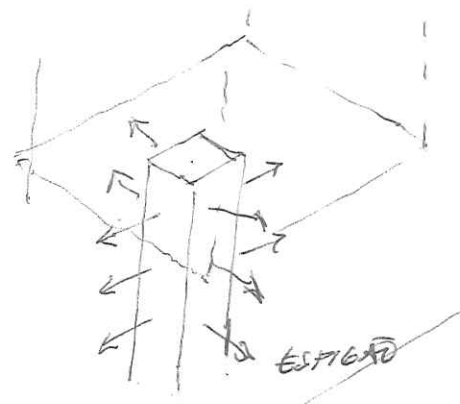


$$\begin{array}{r}
 35 \times 3 = 1,05 \\
 \quad \quad 30 \\
 \hline
 \quad \quad 1,35
 \end{array}$$

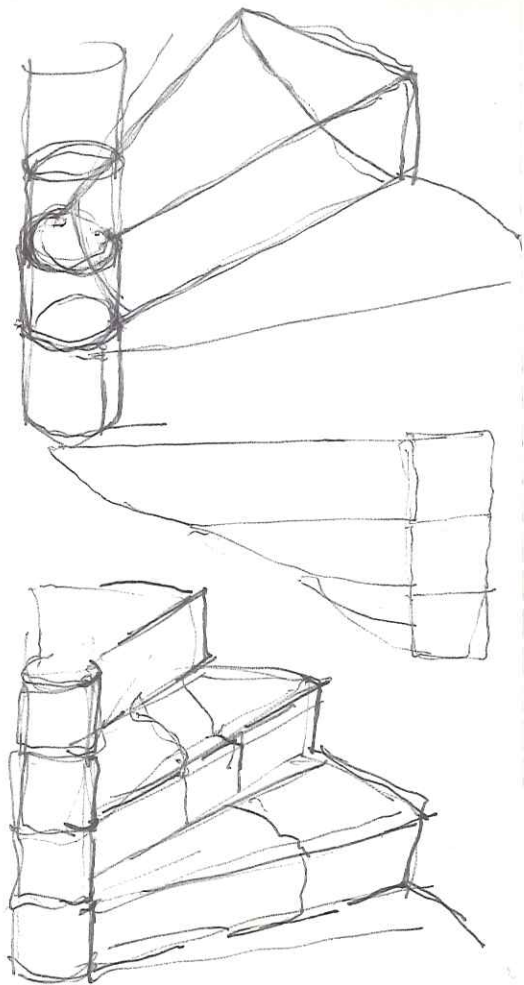




EXPANSÃO FETURUGEM



ESCALA TODOS

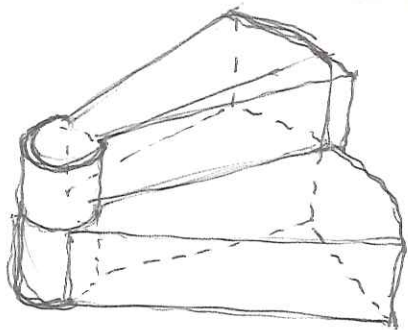


Os construtores de séc. XII trazem algumas modificações à alvenaria de três folhas. Procura-se a necessidade de construir edifícios mais amplos e mais altos, e procurando aligeirar a secção das paredes; tiveram que encontrar um modo de construir arcos homogêneos e resistentes.

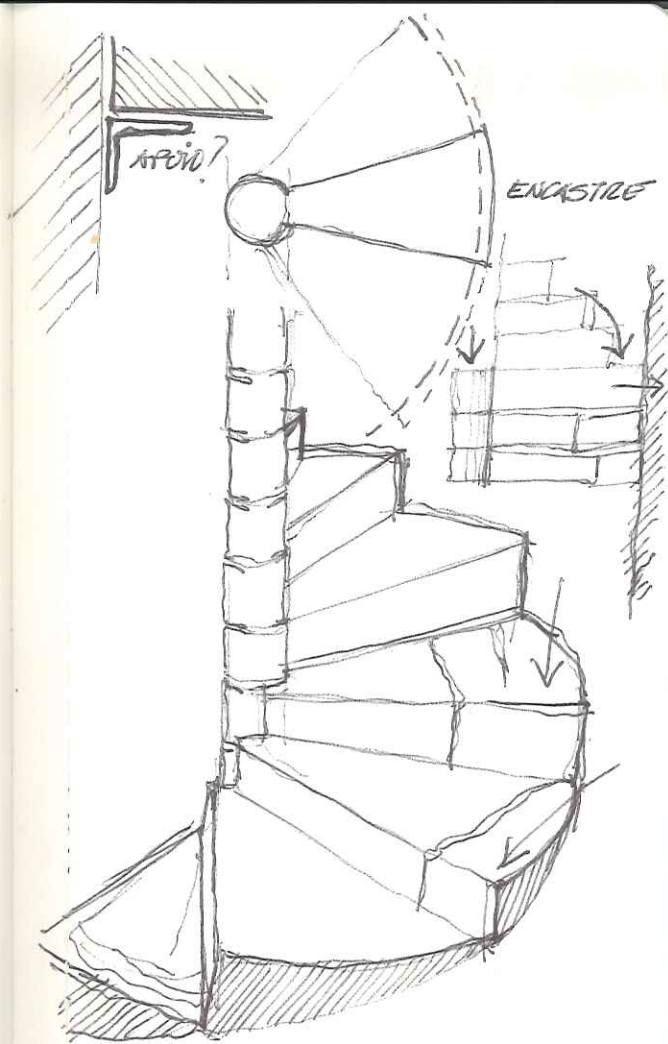
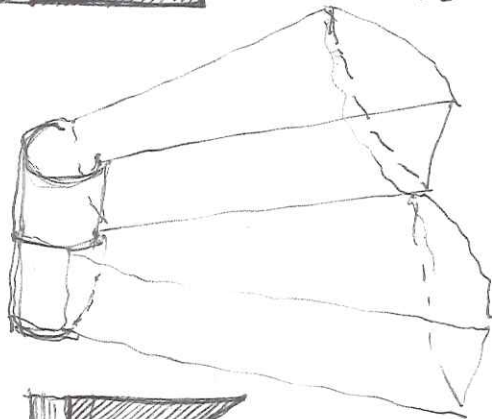
Recorrem ao emprego de pedras de grande tamanho (sólidas com excepções) e esculpem as alvenarias com pedras pequenas. As pedras mais pequenas formam os cunegados e assentam por um só nome em fiadas baixas e pouco profundas. As fiadas são separadas com grossas juntas de argamassa (1 ou 2 centímetros) com o fim de que os leitos estabescessem um "enlace" entre o malmo interior e os paramentos.

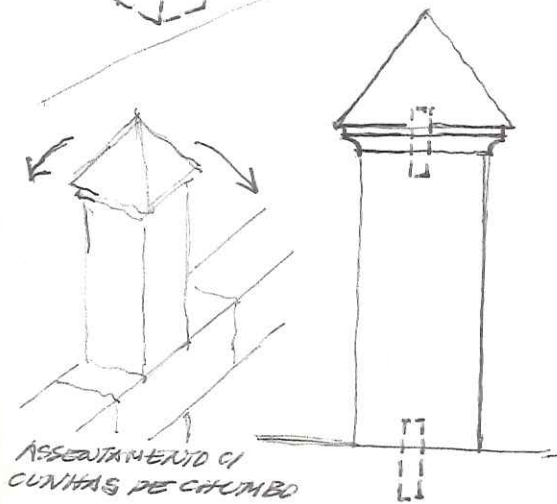
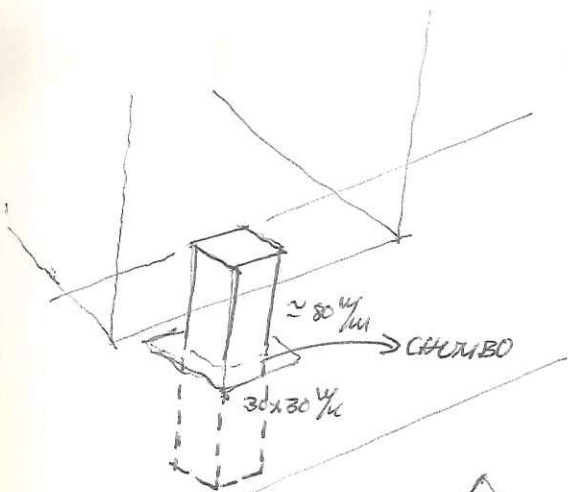
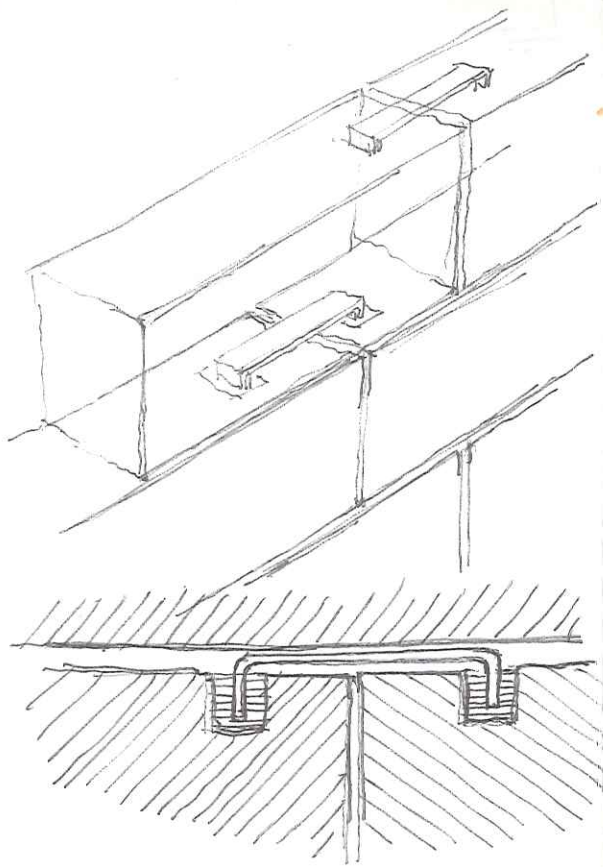
Esta é a chave para garantir o trabo-lho sólido do enchimento com as folhas exteriores.

DEGRADO TIPO 1
INTERIORE

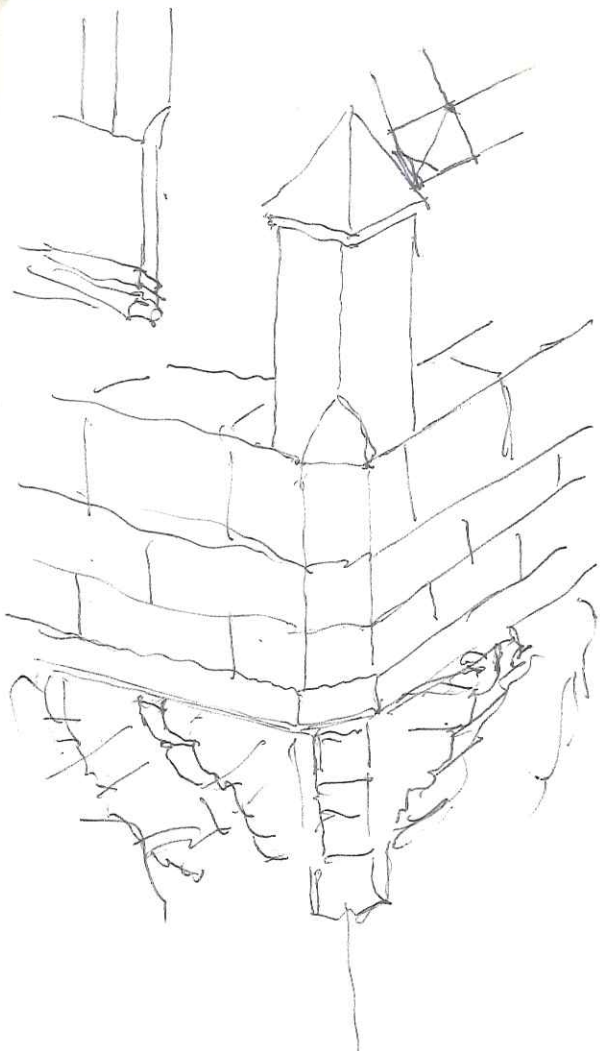


DEGRADO TIPO 2
SESTATO



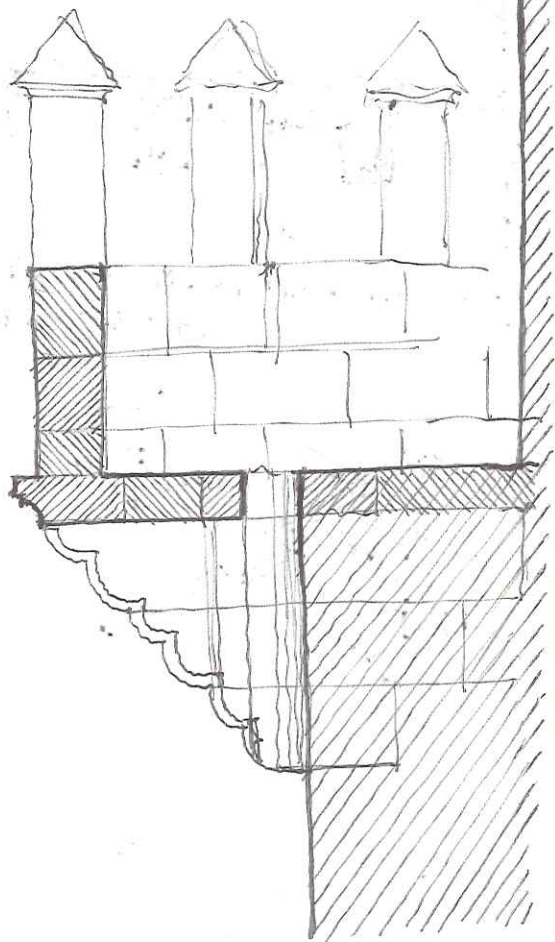


ASSENTAMENTO CI
CUNHAS DE CACHIMBO



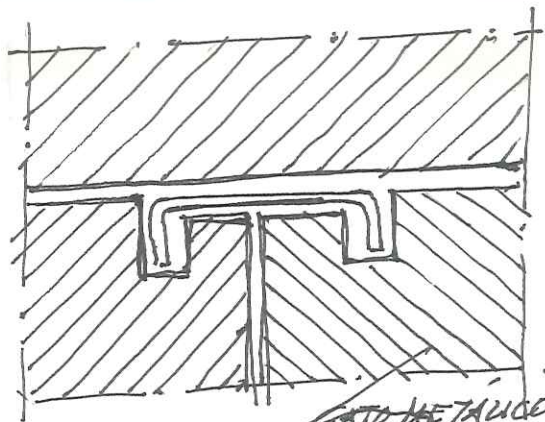
172

LEUCHTTURM 1917
ASENDA

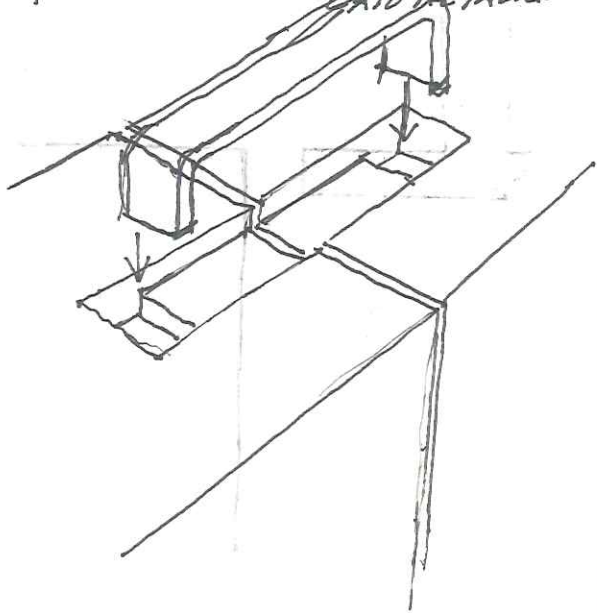


LEUCHTTURM 1917
ASENDA

173

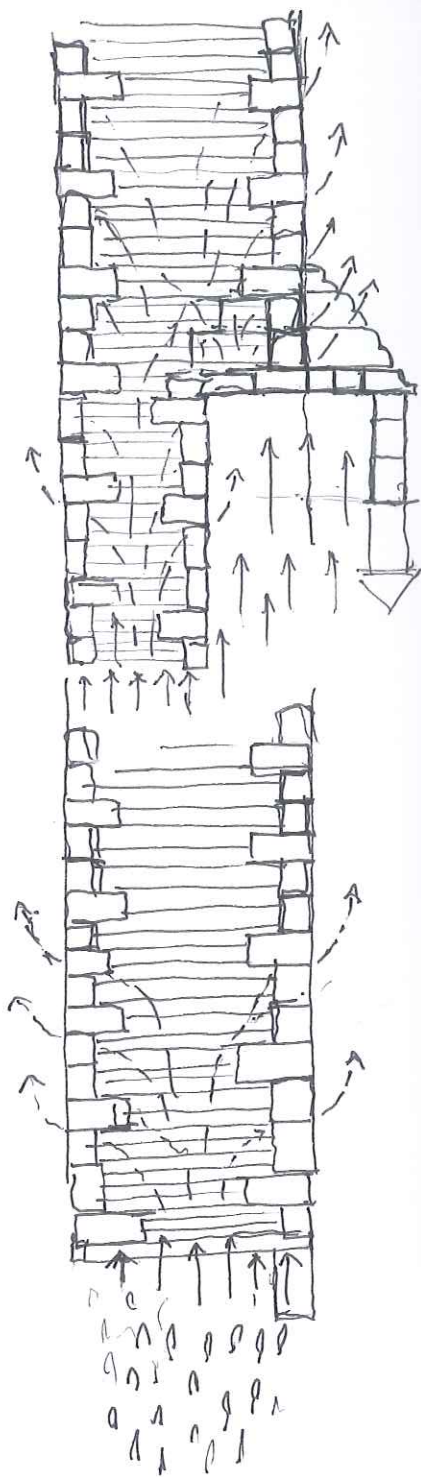
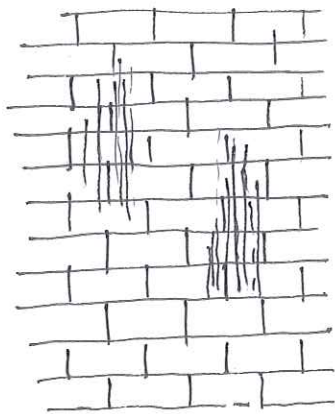
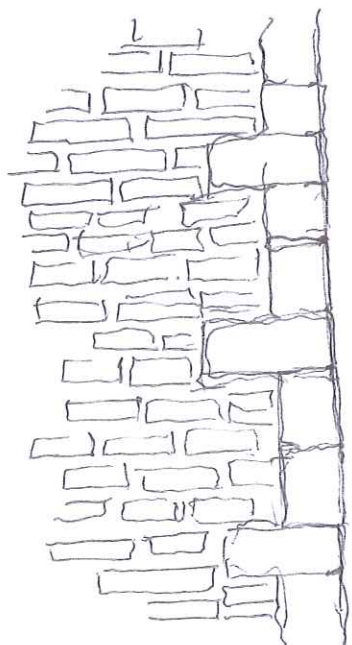


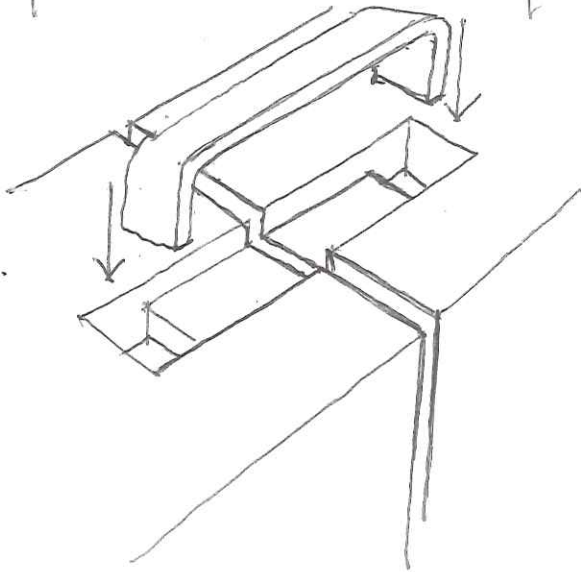
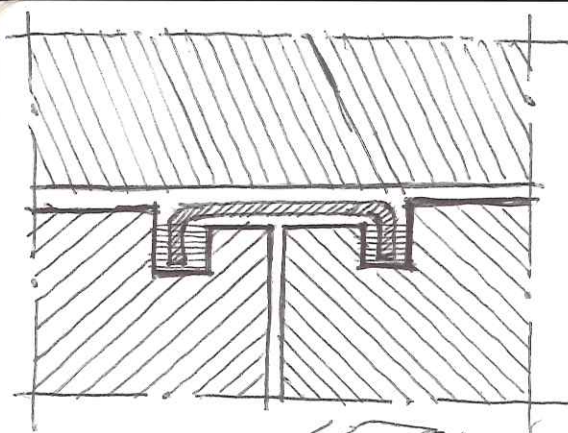
CATO METALICO



PAÇO ALÇICOVAS

- Fot. Semu Fernandis - Fot Alçico
- ESPOLIO NA TORRE DO TOMBO
Fot. Man de 1924 (?)
- Viniato Campos, fotógrafo de Alçicovas que vive em V. Almeida

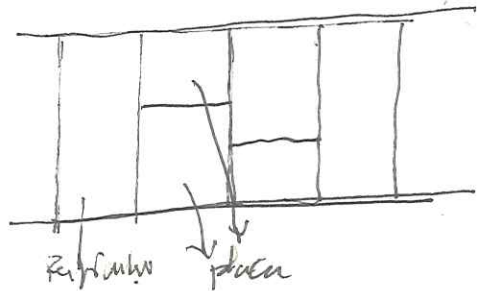


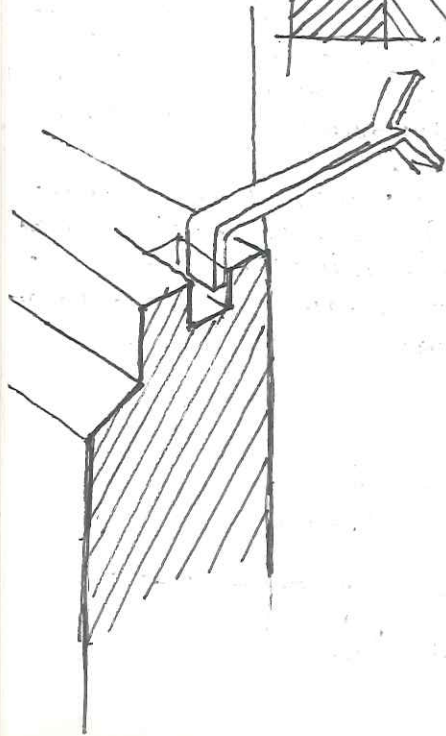


O aparelho utilizado nos parame-
mentos é o aparelho regular
idêntico ao opus inodorum dos
romanos, que consiste em
fazer as pedras na forma
paralelepípedica, de dimensões
fixas.

Este aparelho permite a formação
de fiadas de igual altura
com a correspondência das
juntas verticais em fiadas
alternadas.

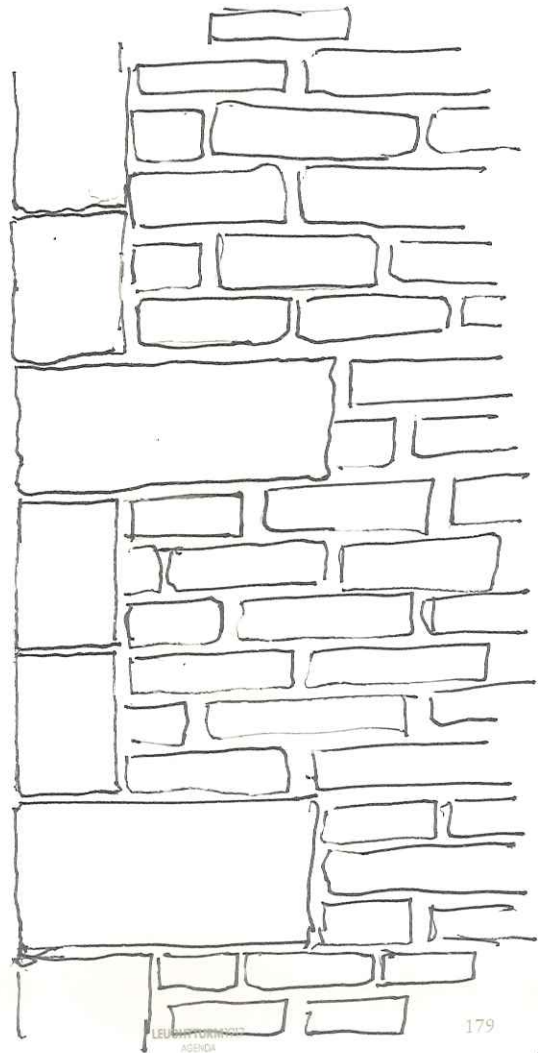
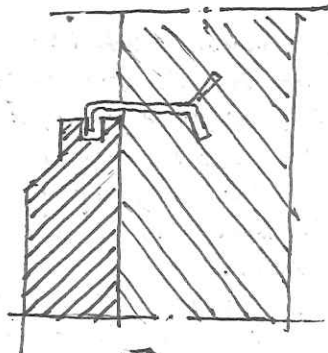
Este aparelho tinha algumas
variantes, entre as quais se dest-
aca a alternância de uma
fiada de perpendiculares com uma
de planças.





178

LEUCHTTURM 1917
AGENDA



LEUCHTTURM 1917
AGENDA

179