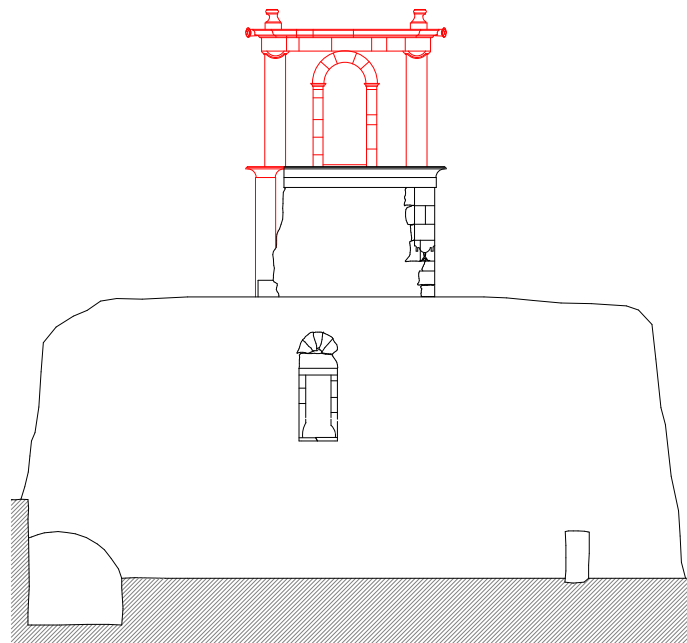
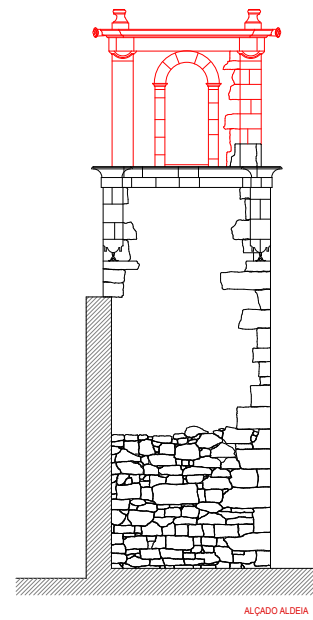


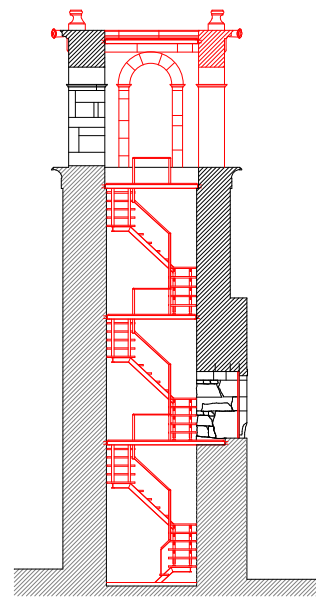
ALÇADO RIBEIRO



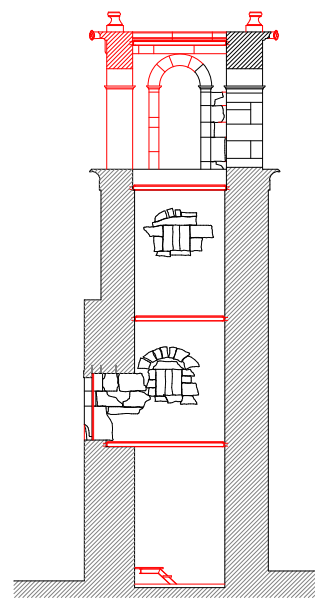
ALÇADO CONVENTO



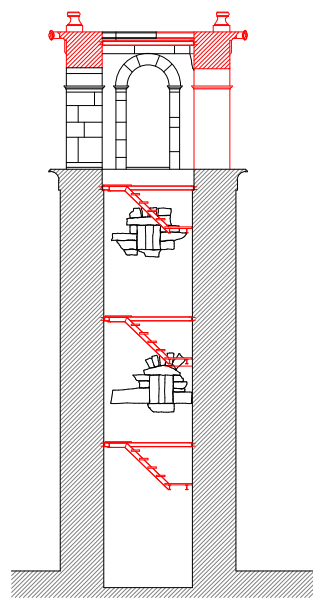
ALÇADO ALDEIA



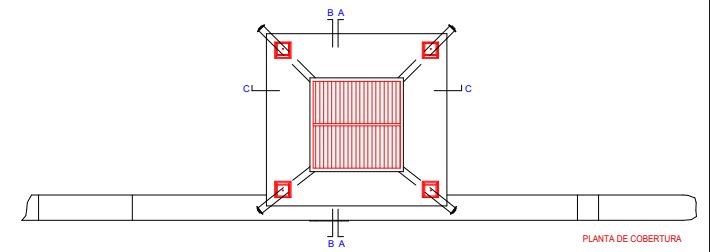
CORTE A.A



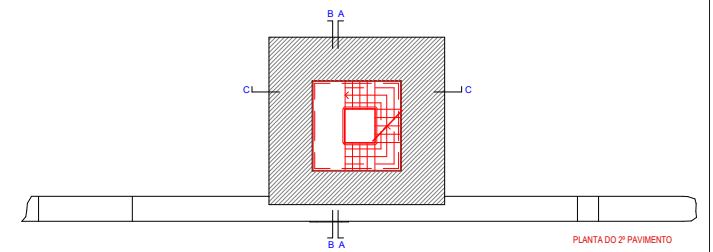
CORTE B.B



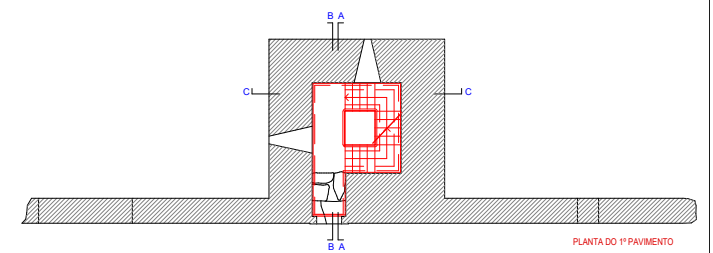
CORTE C.C



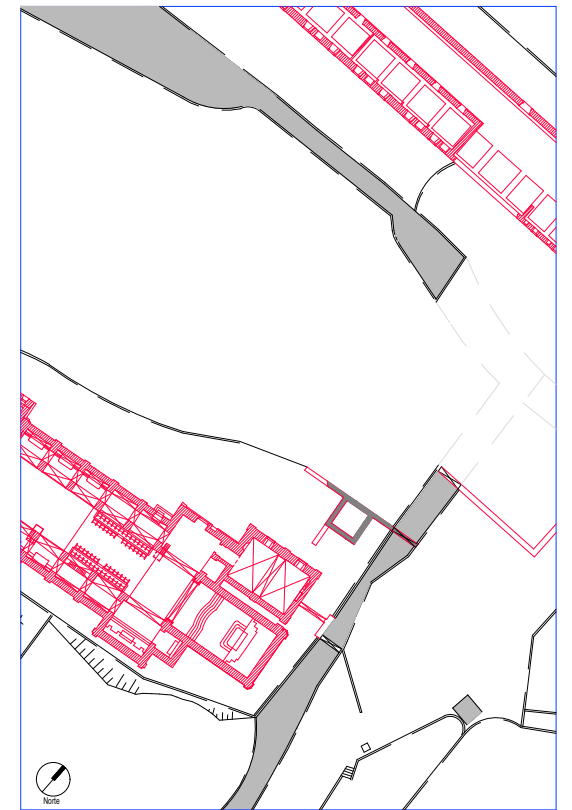
PLANTA DE COBERTURA



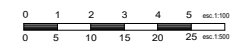
PLANTA DO 2º PAVIMENTO



PLANTA DO 1º PAVIMENTO

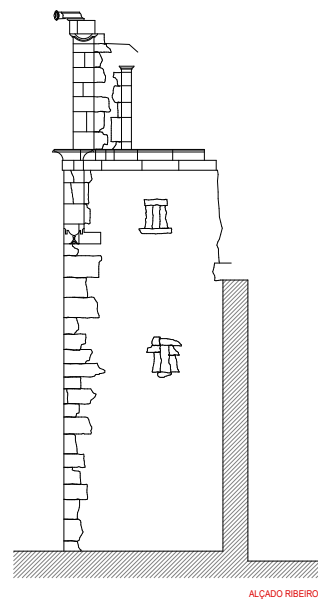


Esc. 1:1000

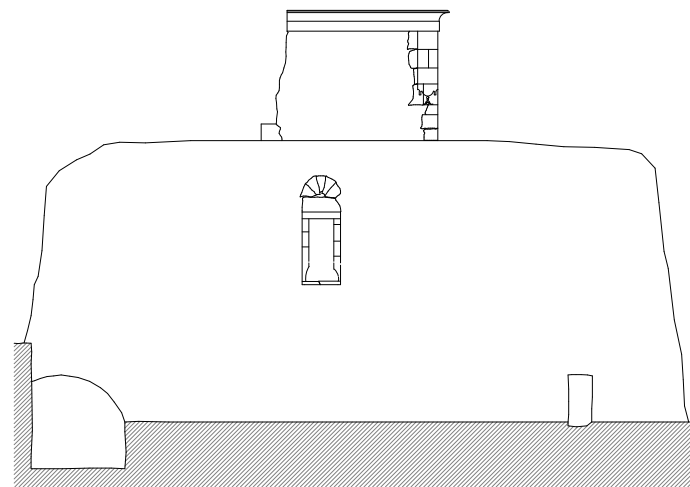


ANTONIO PEDRO SILVA VENTURA MIGUEL VENTURA RUI CARVALHO FRANÇO FIGUEIREDO	IPPAR IGREJA DO MOSTEIRO DE S. JOÃO DE TAROUCA LEVANTAMENTO (TORRE) PLANTAS 1, 2, COBERTURA, CORTES E ALÇADOS	JULHO 2000 Escala 1/100, 1/500	06
---	--	-----------------------------------	----

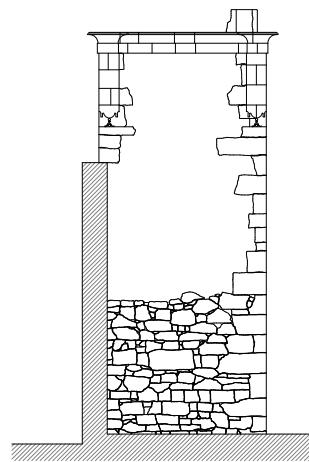
Humberto Vieira, Arquitecto / Lda



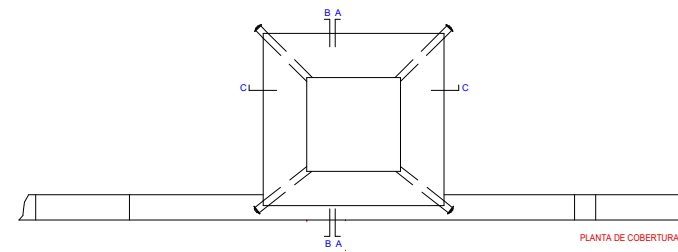
ALÇADO RIBEIRO



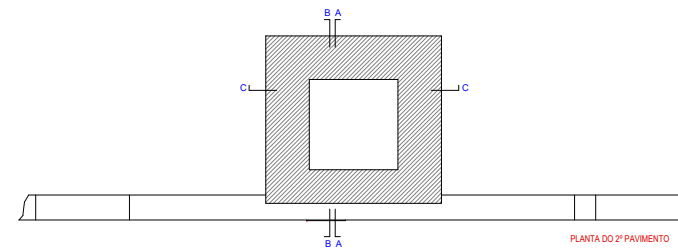
ALÇADO CONVENTO



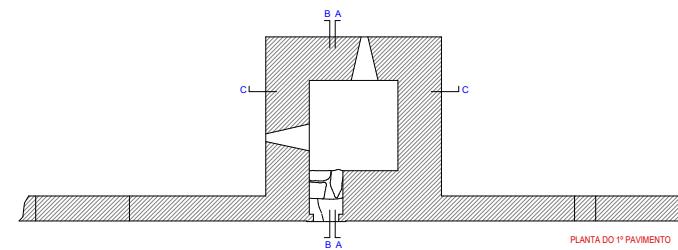
ALÇADO ALDEIA



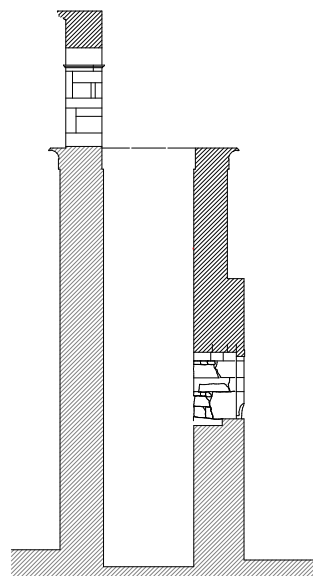
PLANTA DE COBERTURA



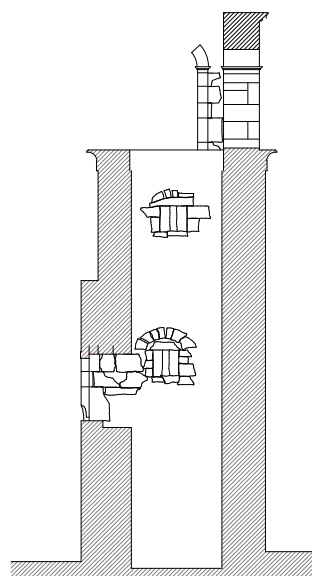
PLANTA DO 2º PAVIMENTO



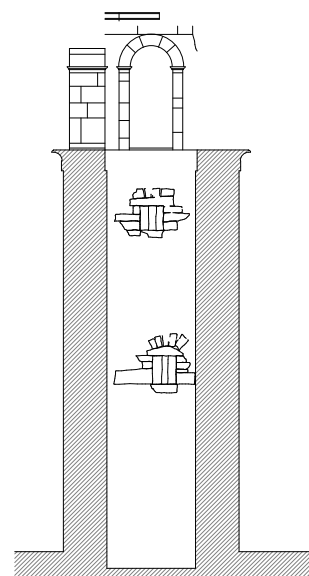
PLANTA DO 1º PAVIMENTO



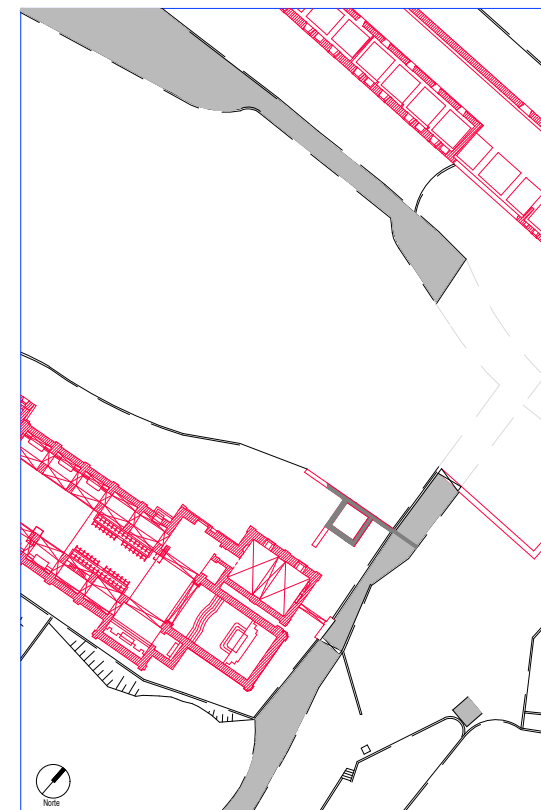
CORTE A-A



CORTE B-B



CORTE C-C



Esc. 1:1000



ANTÓNIO PEDRO DIAZ VENTURA MIGUEL VENTURA RUI CARVALHO FRANÇO FIGUEIREDO	IPPAR IGREJA DO MOSTEIRO DE S. JOÃO DE TAROUCA LEVANTAMENTO (TORRE) PLANTAS 1, 2, COBERTURA, CORTES E ALÇADOS	JULHO 2000 Escala 1/100, 1/500	Humberto Vieira, Arquitecto / Lda
--	--	-----------------------------------	-----------------------------------