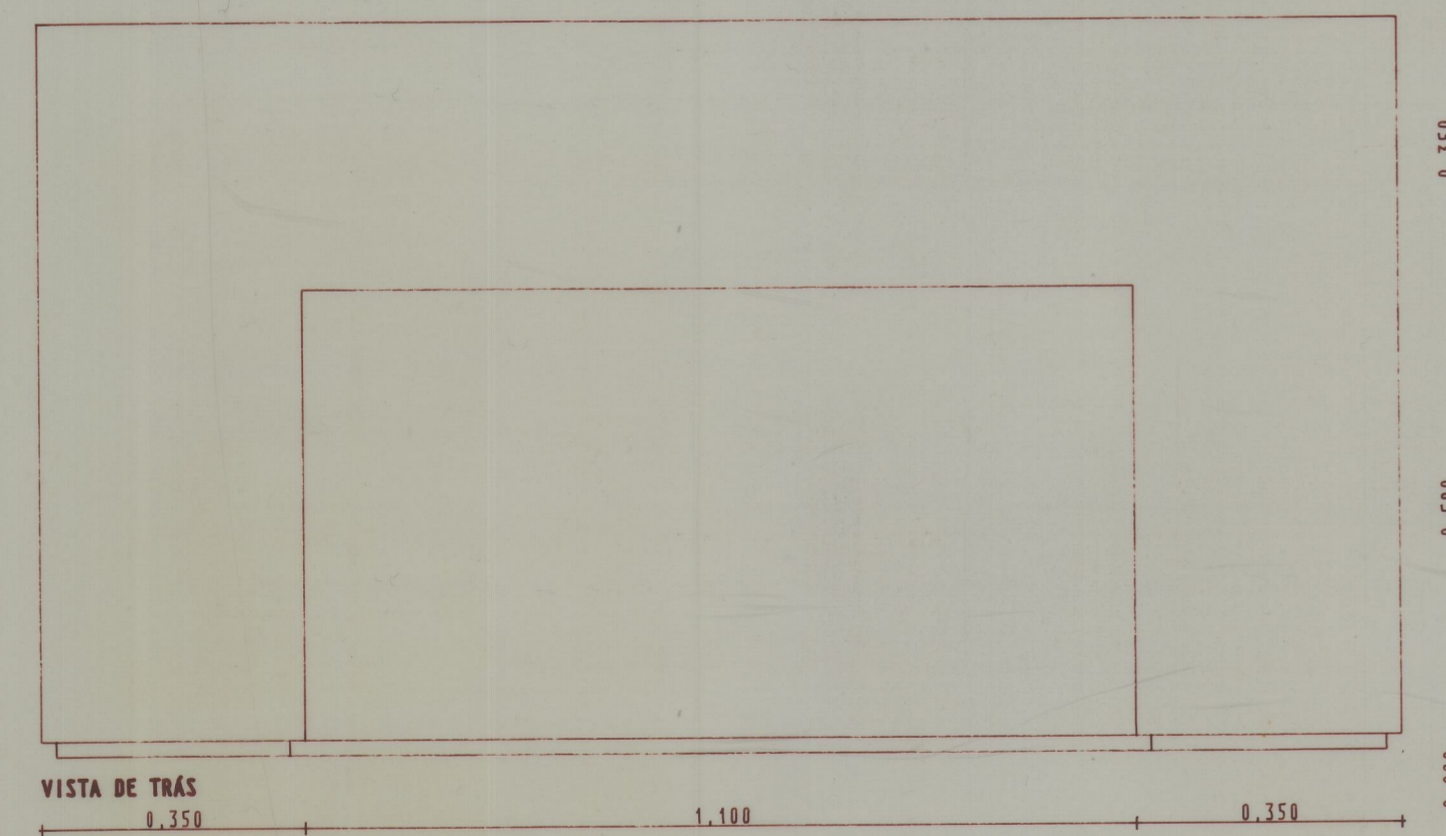
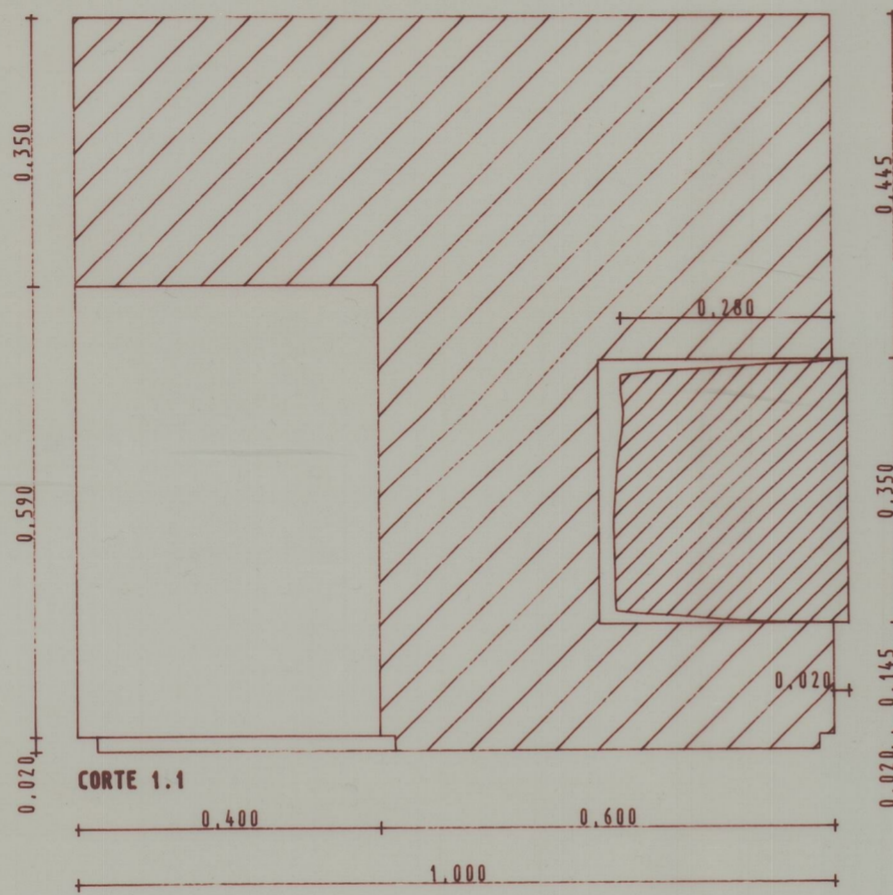
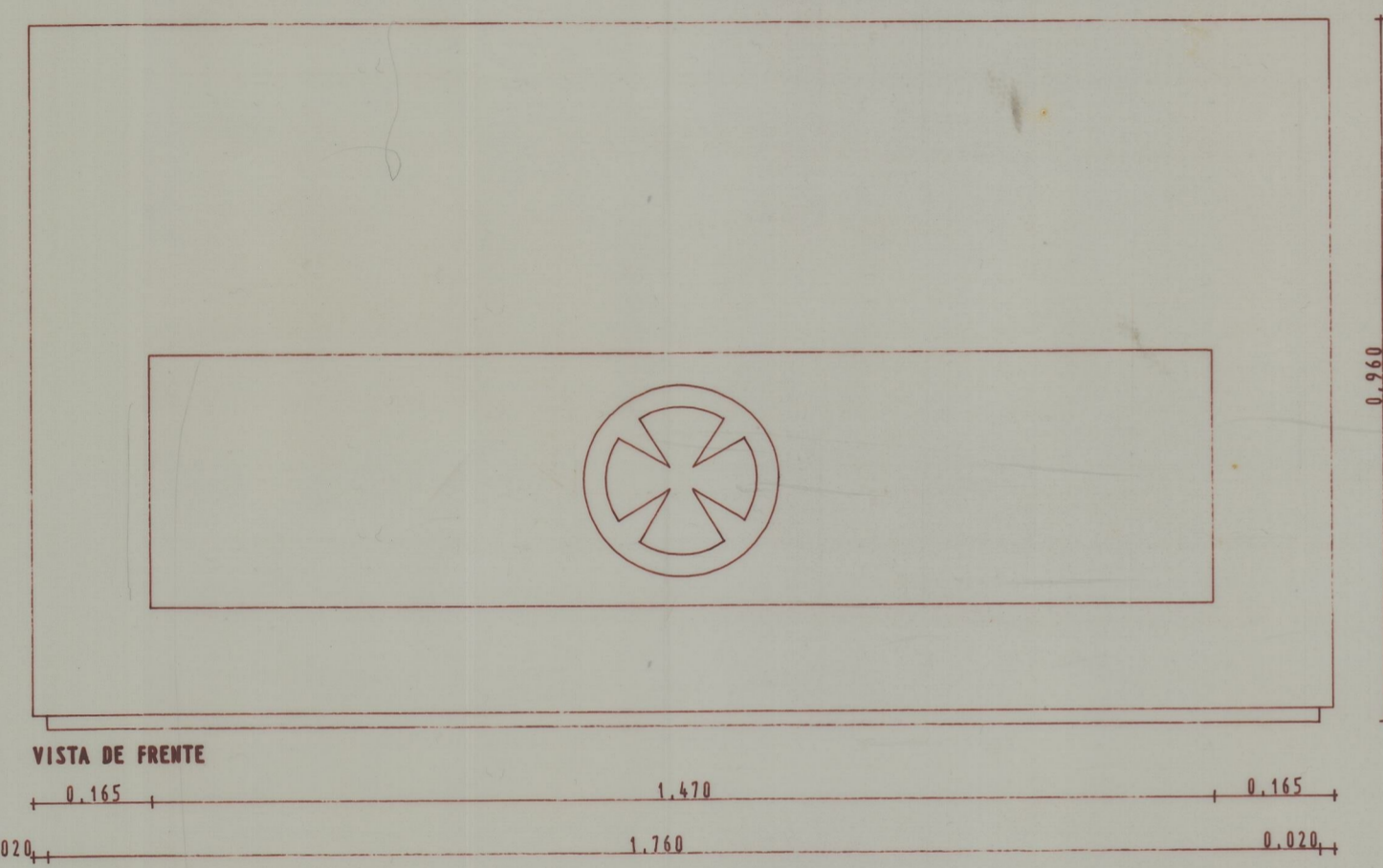
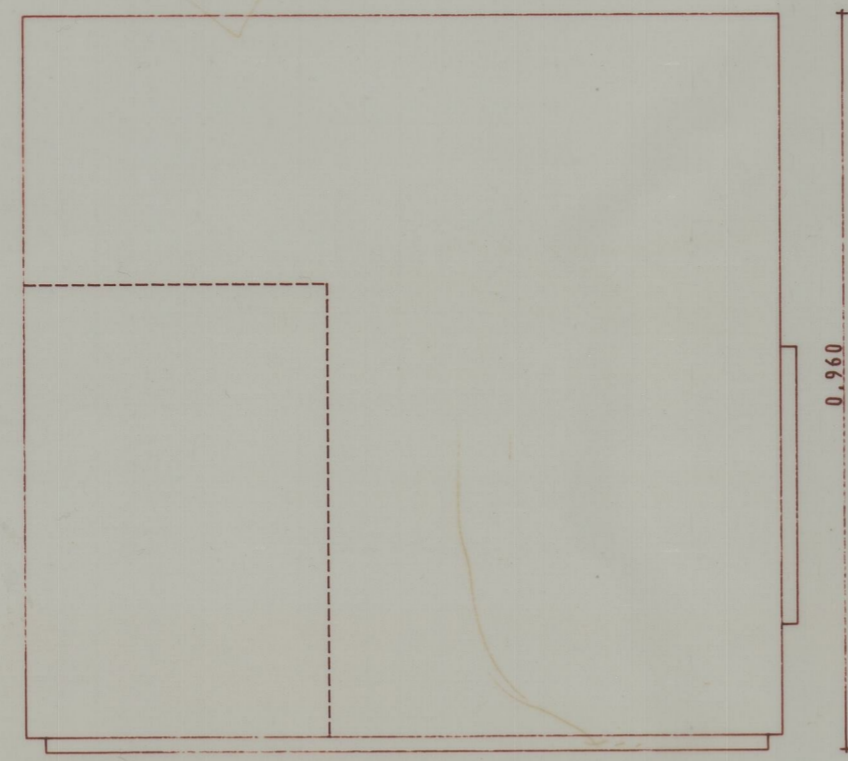
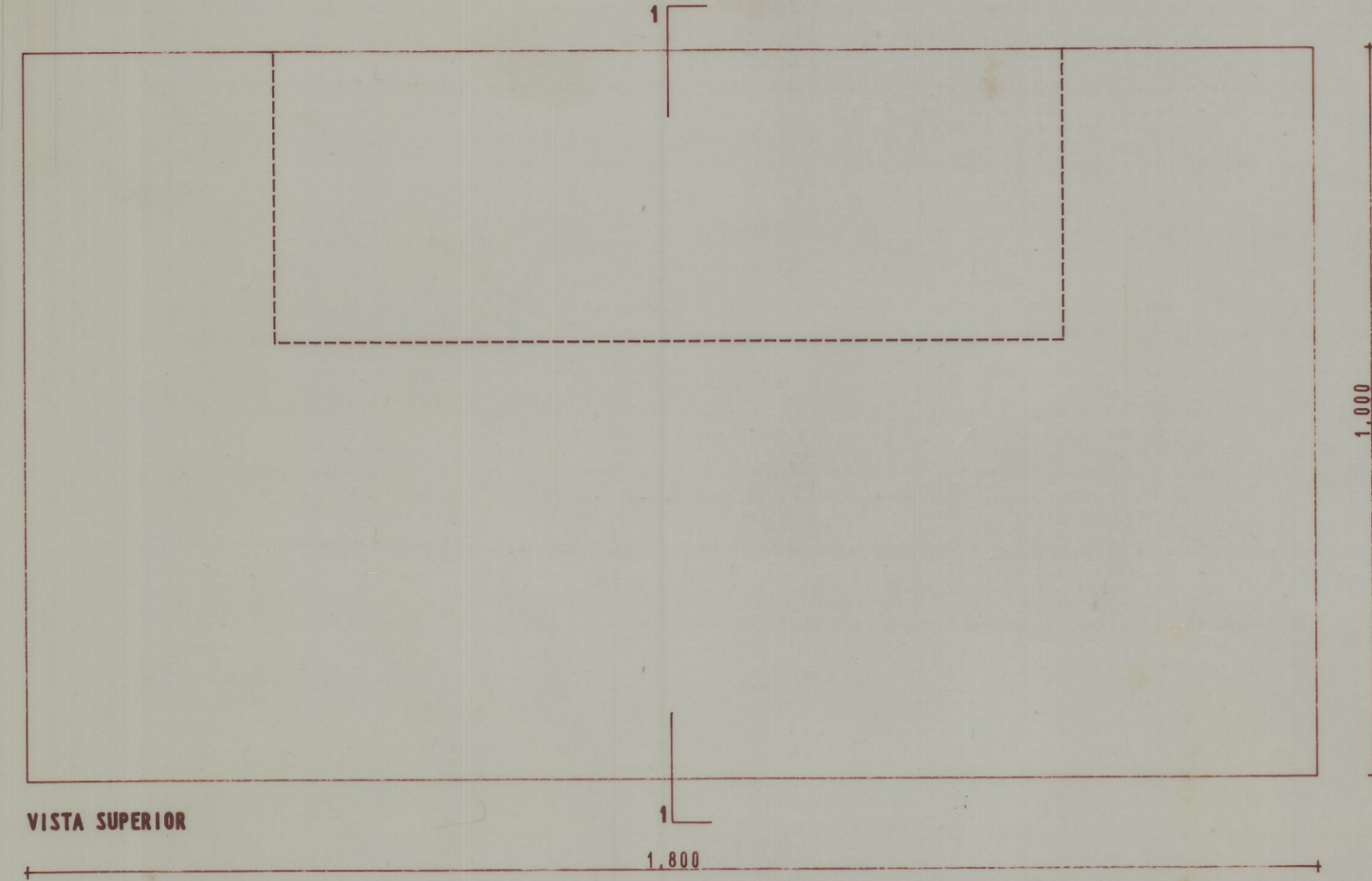
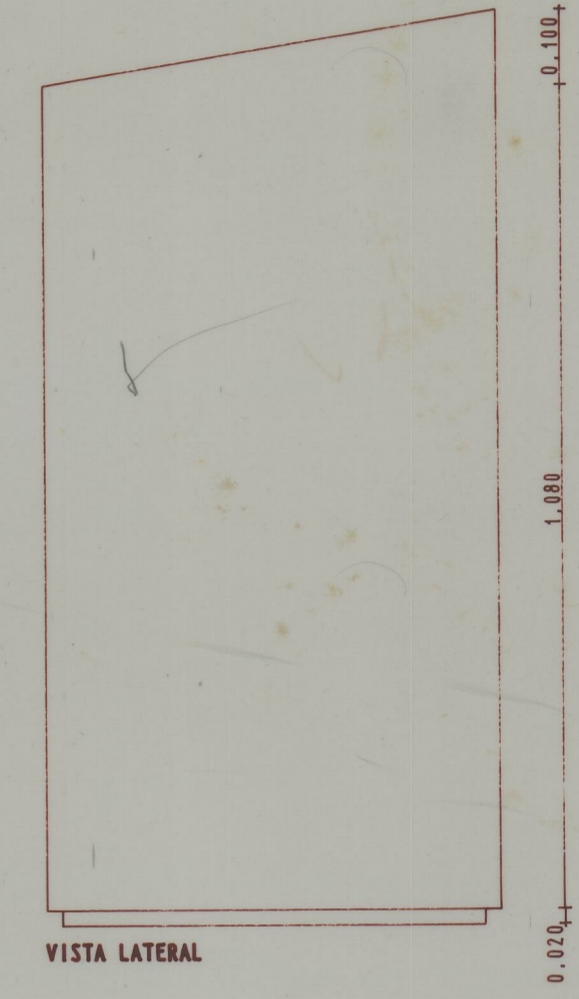
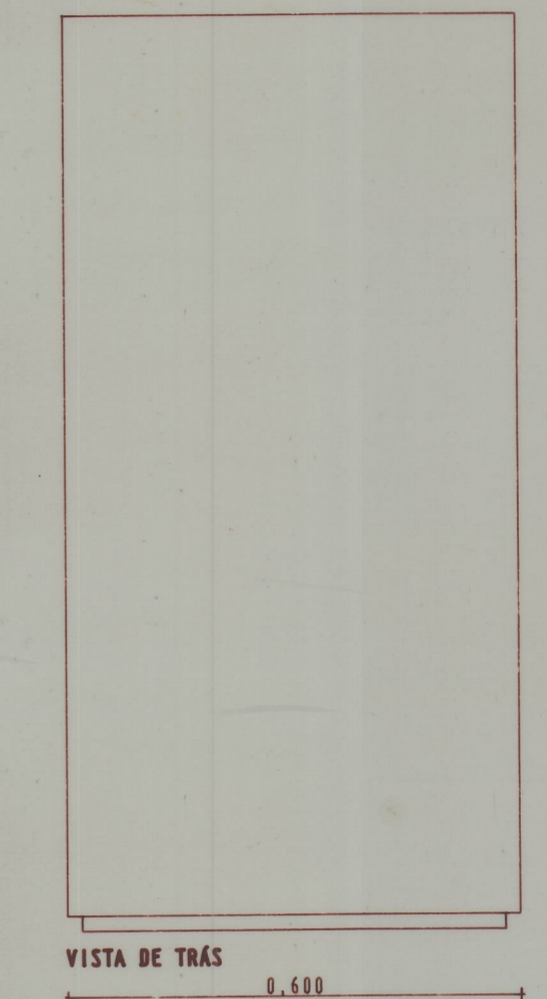
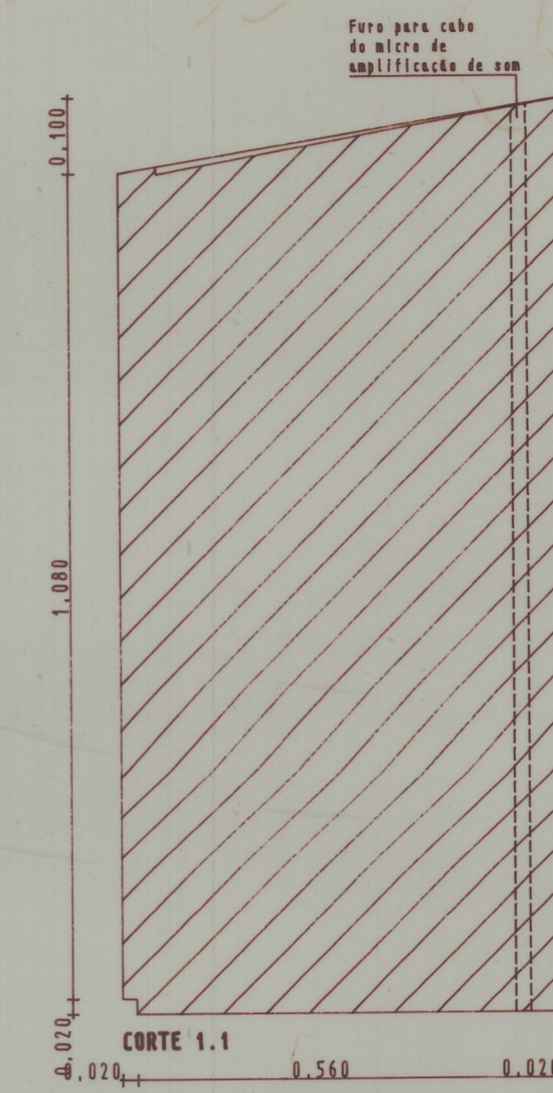
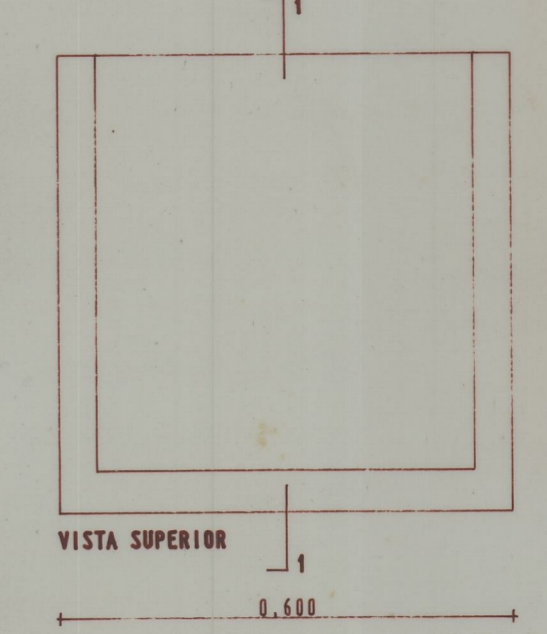


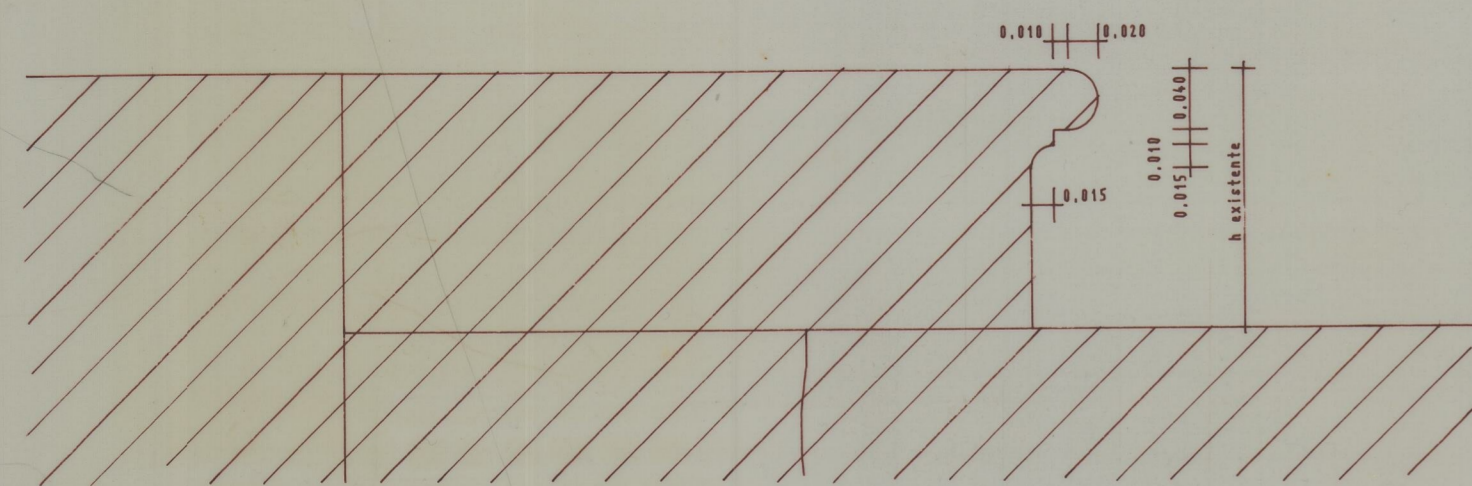
ALTAR



AMBAO



PORM. DO DEGRAU A CONSTRUIR esc.1/5



NOTA : DIMENSÕES A ACERTAR COM O AUTOR DO PROJECTO

Humberto Vieira / Abílio Mourão - Arquitectos

IPPAR	
IGREJA DE S. DOMINGOS - SÉ DE VILA REAL	
RECUPERAÇÃO DA IGREJA - PROJECTO DE EXECUÇÃO	ABRIL 1997
PORMENORES - ALTAR, AMBAO E DEGRAU A CONSTRUIR	Escala: 1/10 e 1/5

es 4772 46  
este 4776  
41-2253