


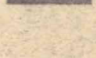




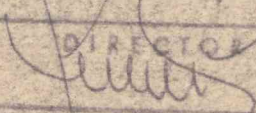
- IMÓVEIS CLASSIFICADOS
-  PELOURINHO
 -  MURALHAS
- IMÓVEIS DE INTERESSE HISTÓRICO-CULTURAL
-  1 IGREJA DE STA MARIA
 -  2 TRIBUNAL CADEIA
 -  3 EDIFÍCIO DOS CTT
 -  4 IGREJA DE S. VICENTE

M. O. P.

DIRECCAO GERAL DOS EDIFICIOS E MONUMENTOS NACIONAIS
DIRECCAO DOS SERVICOS DOS MONUMENTOS NACIONAIS
DIRECCAO DE SERVICOS REGIONAL DOS MONUMENTOS DO CENTRO

CASTELO MENDO

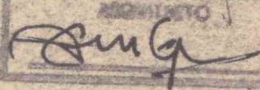
DIRECTOR



ESCALA: 1/1000

PROC.º N.º

ARQUITECTO

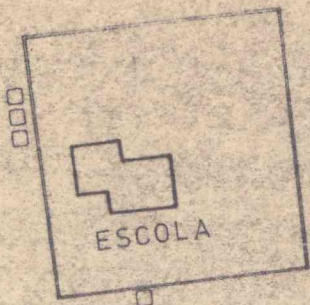


DESENHADOR

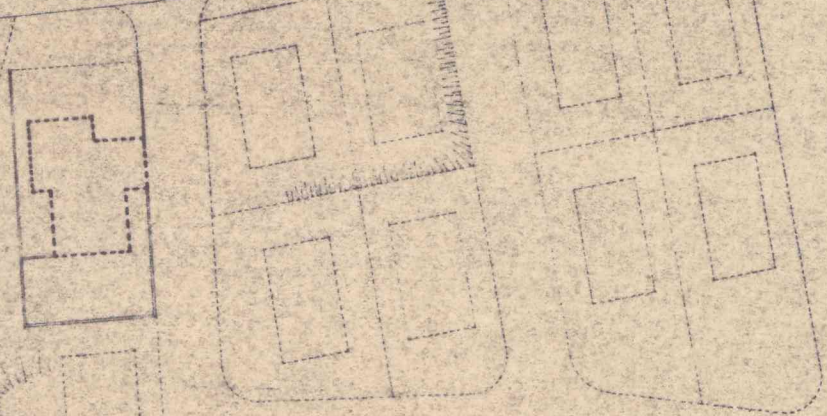
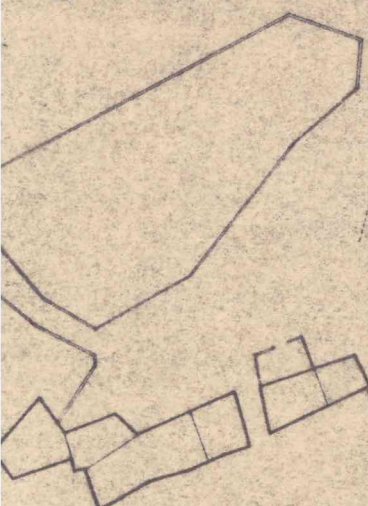


DATA: / 12 / 80

DES.º N.º



ACESSO A E.N. 16



MARIA
IA
TT
CENTE