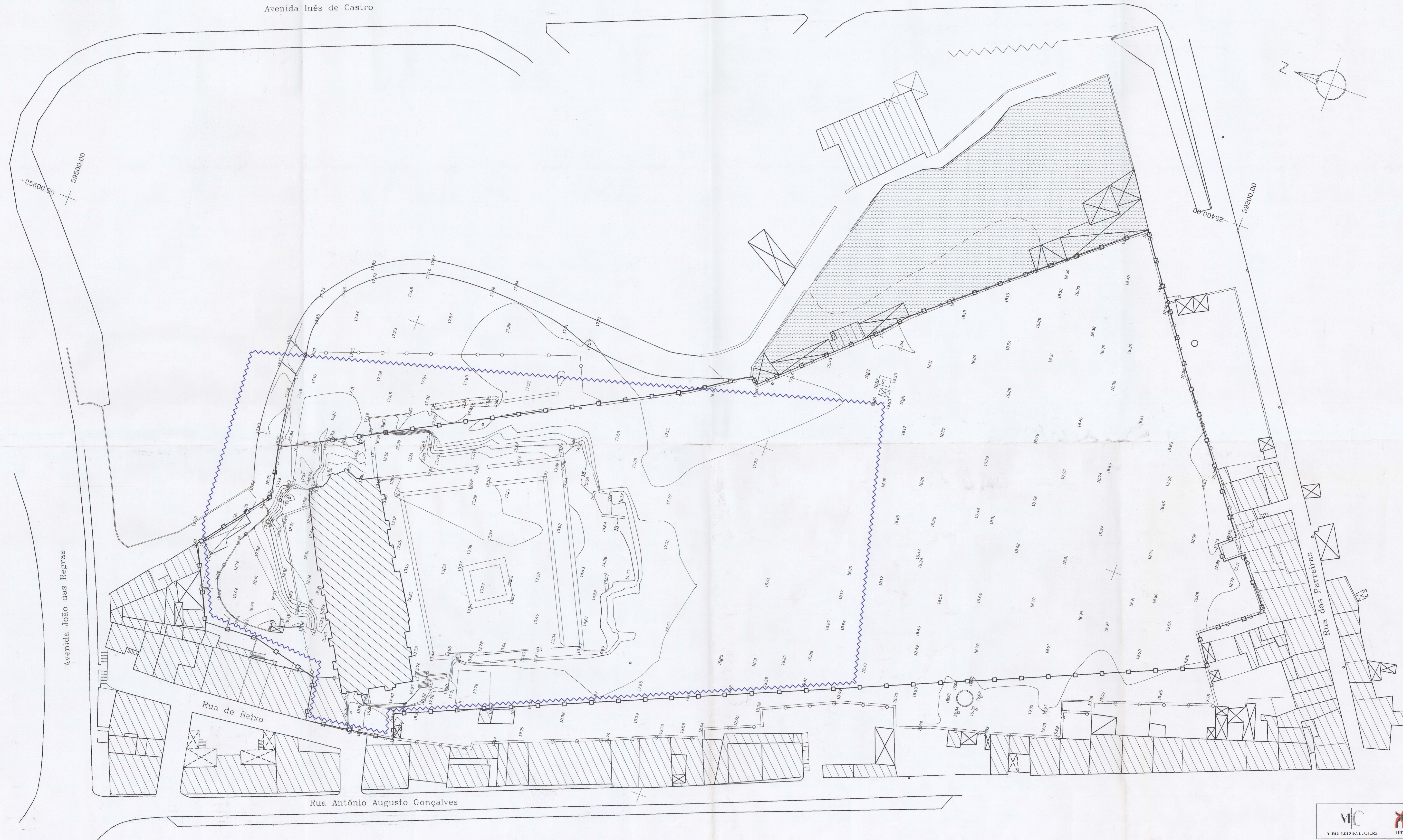
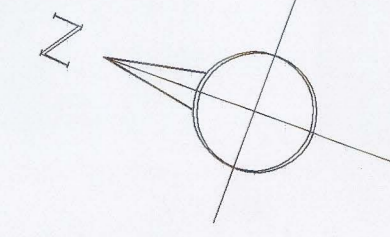

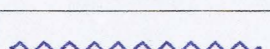
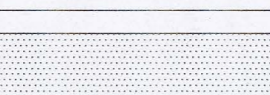



LEVANTAMENTO TOPOGRÁFICO
 MOSTEIRO DE SANTA CLARA-A-VELHA

Avenida Inês de Castro



-  — Limite de propriedade do IPPAR
-  — Cortina periférica moldada
-  — Parcela de terreno a adquirir pelo IPPAR

ÁREA = 26 787.0 m

| | |
|---|---------------|
|  | |
| p.o.: IPPAR, Direcção Regional de Coimbra Local: Mosteiro de Santa Clara-a-Velha, COIMBRA | |
| Técnico Responsável: | |
| Parte: Arqueologia Fase: Projecto de Valoração | |
| Desenhos: Planta Avaliativa Arqueologia / Cortina Periférica Moldada Escala: 1/2500 | |
| processo: 37/IPPAR-C/5/2000 | Folha nº 3 |