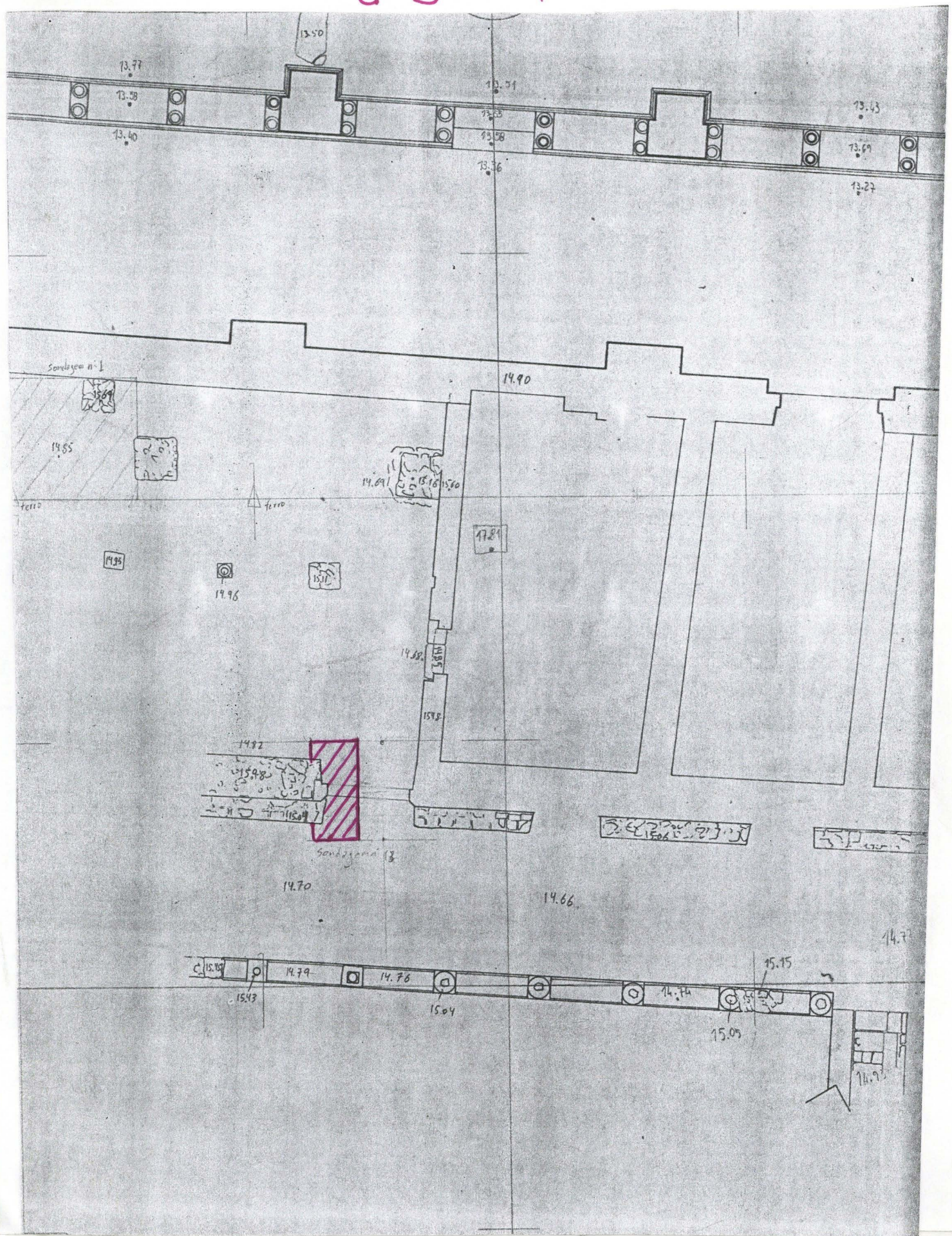
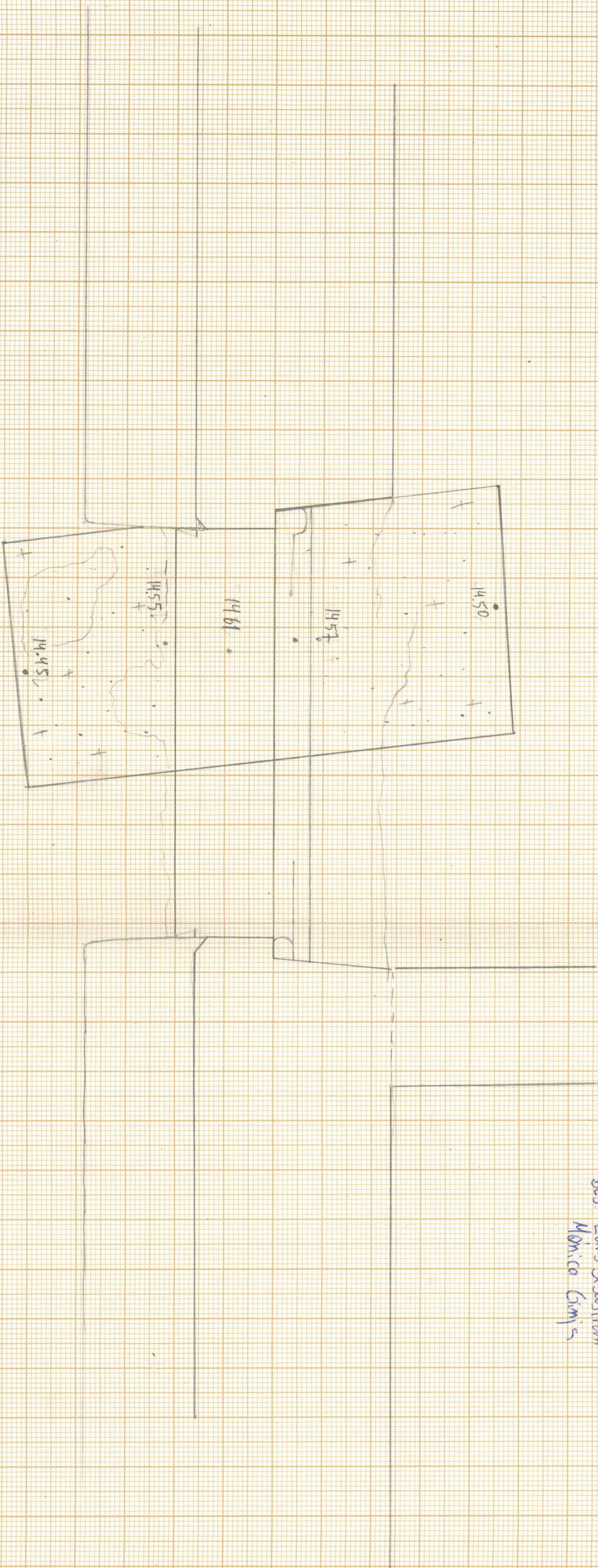





SONDAGEM N: 13 G'3 Q4

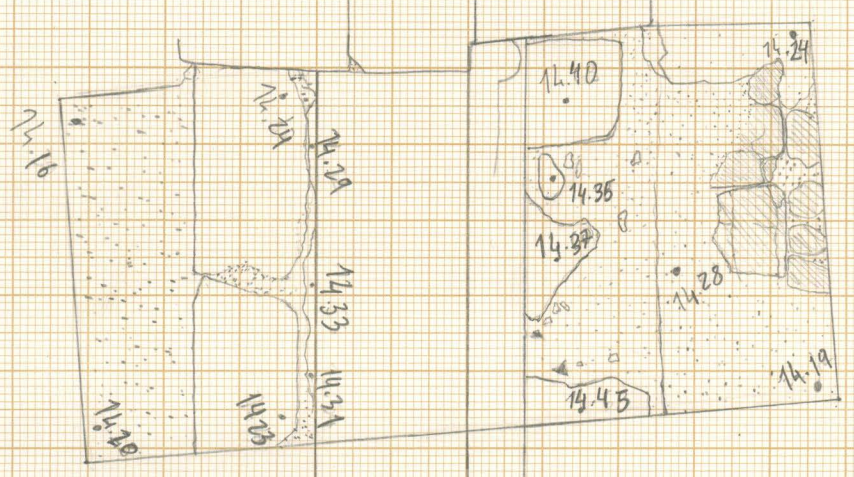




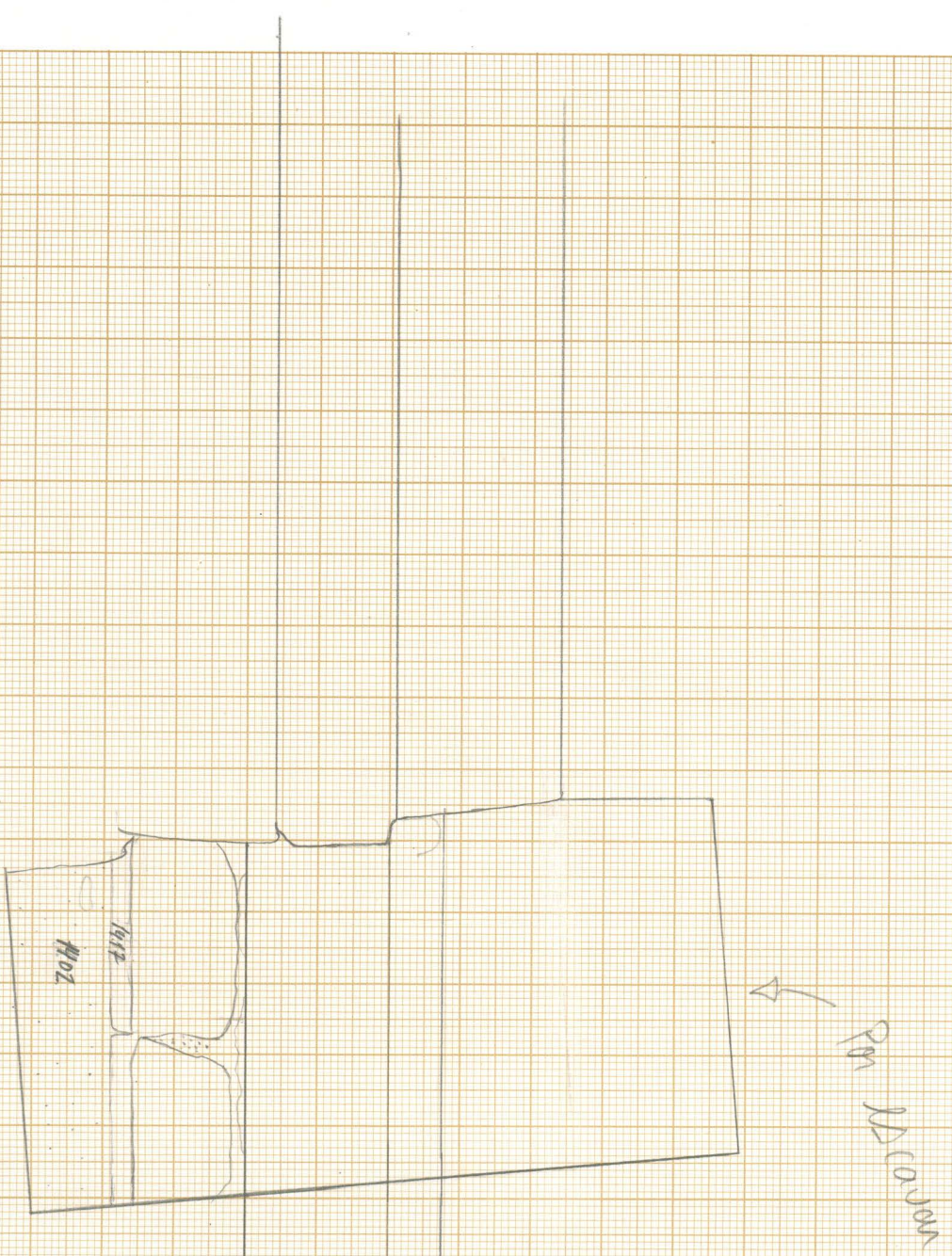
SCV/97
 Sond. N: 13 - Planta 1
 Esc. 1/20 N
 Des: Luis Sebastian
 Monica Gimis

+ . . . +
 → Pavimento em argamassa
 (em bom estado de conservação) (com
 com vigas) (com vigas) (com vigas)

-  → flojeiras
-  → organixas em bom estado de conservação.
-  → organixas =



SCV/97
 Sond. N.º 13
 DX: 1/20 →
 Des: Luis Sebastian
 Monica Simão
 — Planta 2



SCV 97
 [Sond. N:13] - Plantas 3
 UC. 1/20 N
 Dr. Eric Sebastian
 Mexico City

6/21/97