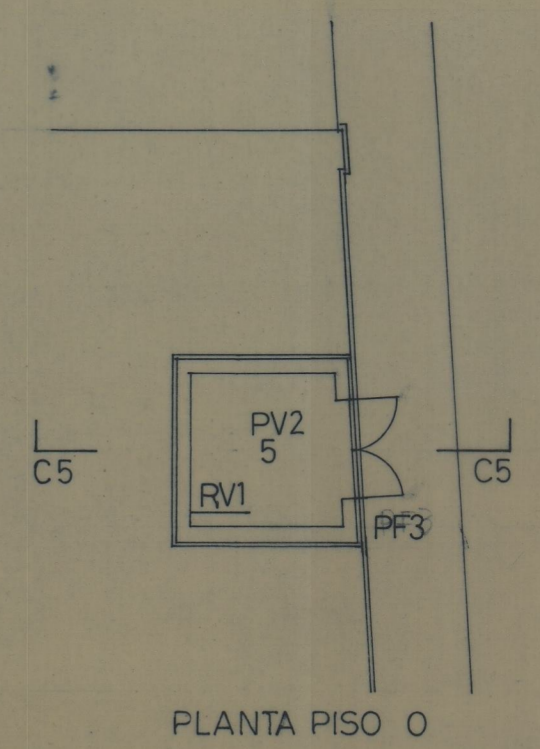
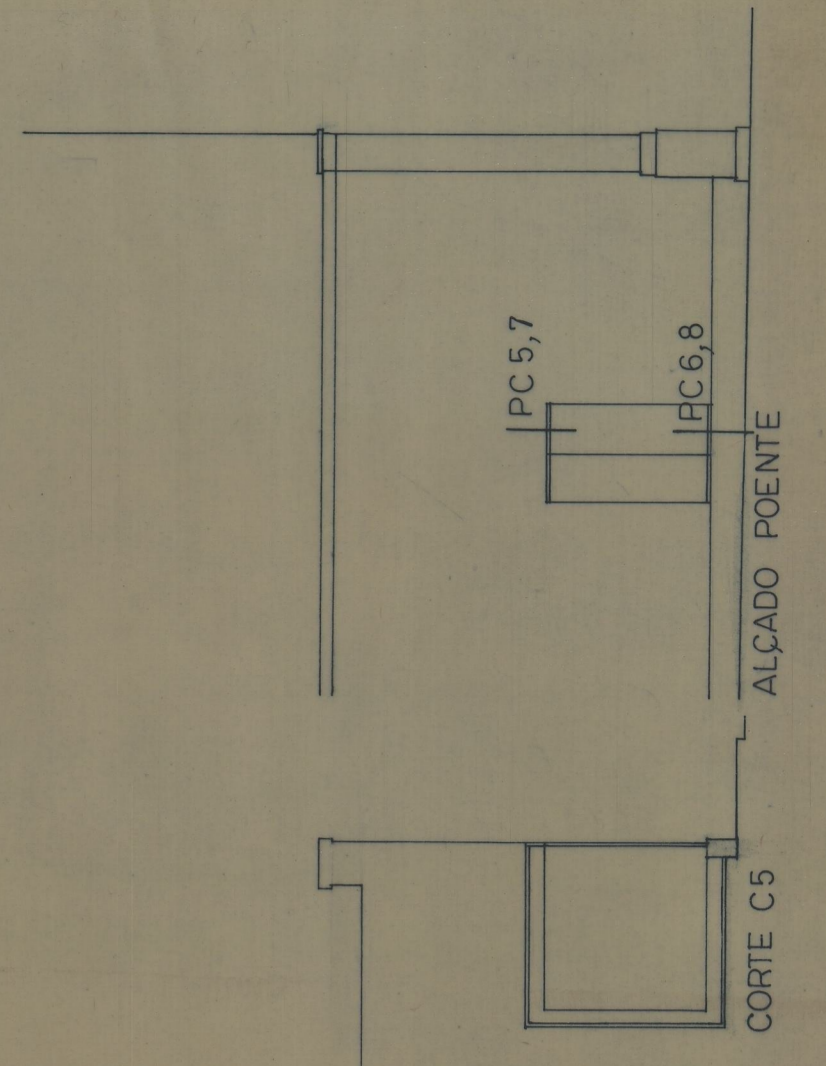


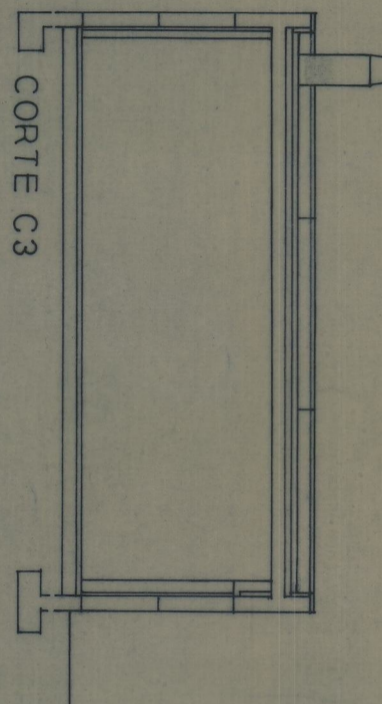
PLANTA GERAL



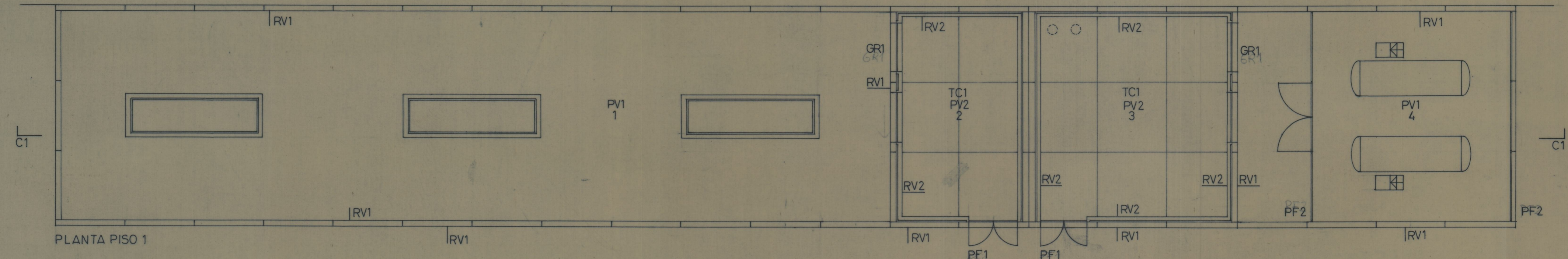
PLANTA PISO 0



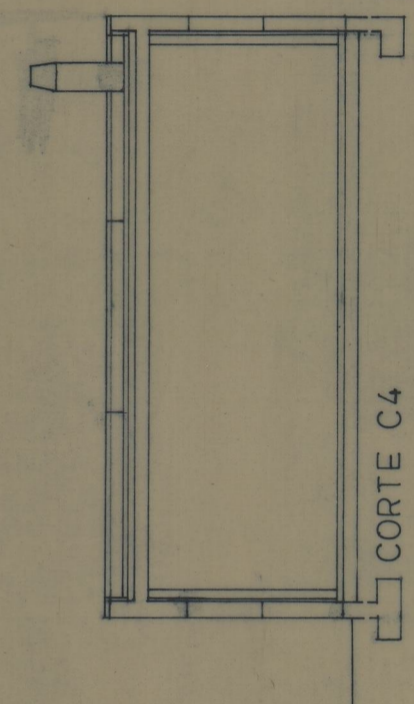
ALÇADO POENTE



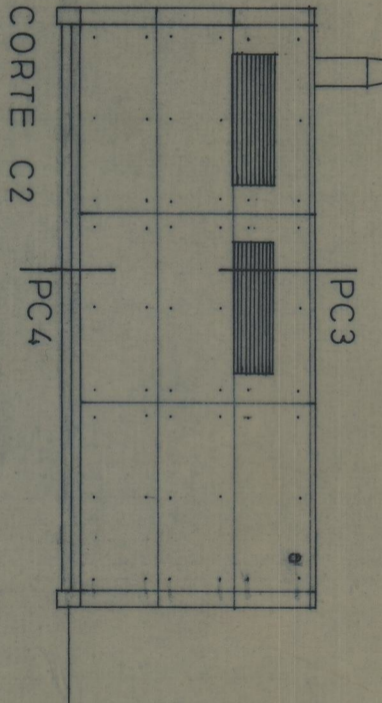
CORTE C3



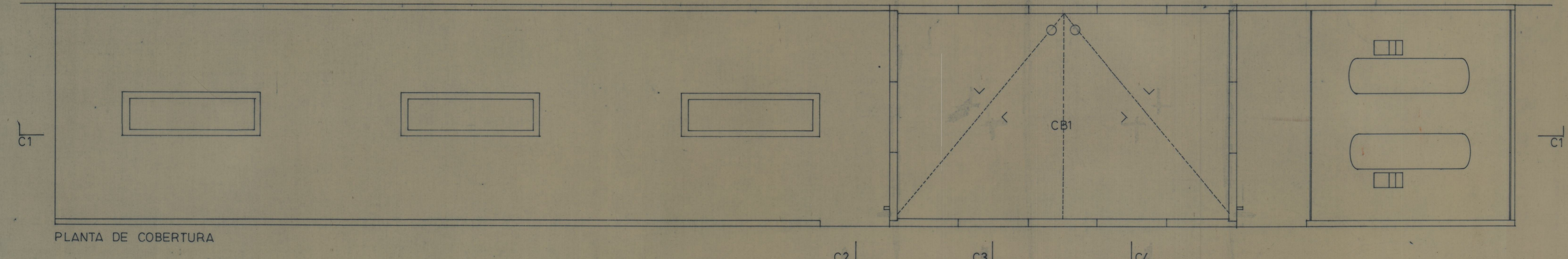
PLANTA PISO 1



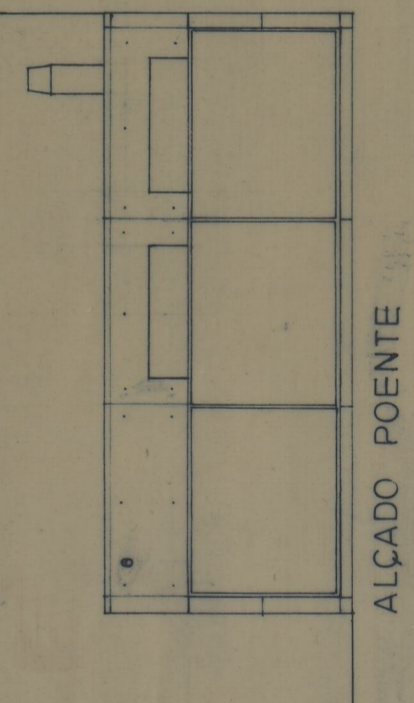
CORTE C4



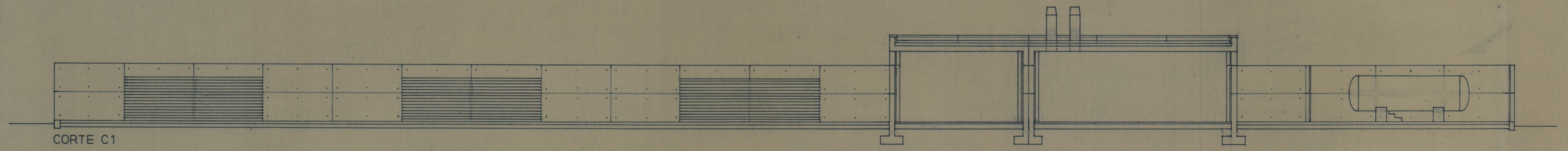
CORTE C2



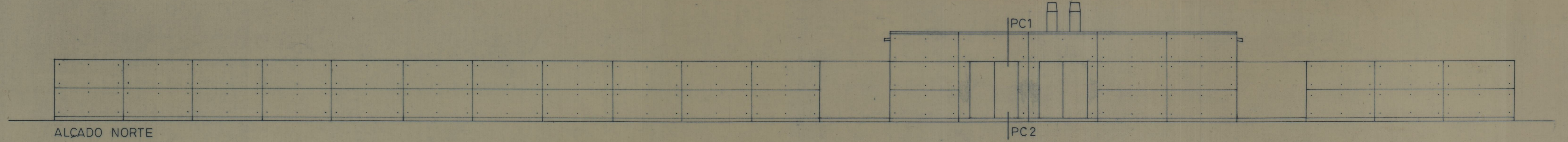
PLANTA DE COBERTURA



ALÇADO POENTE



CORTE C1



ALÇADO NORTE

- 1 - CHILLERS
- 2 - POSTO DE TRANSFORMAÇÃO
- 3 - CENTRAL TÉRMICA
- 4 - CENTRAL DE GÁS
- 5 - POSTO DE SECCIONAMENTO DA EDP

INSTITUTO PORTUGUÊS DE MUSEUS
 INST. PORT. DO PATRIMÓNIO ARQUITECTÓNICO E ARQUEOLÓGICO
 MUSEU NACIONAL SOARES DOS REIS
 PROJECTO DE REMODELAÇÃO / 3ª FASE - B
 PLANTAS, CORTES E ALÇADOS/ACABAMENTOS

Costa 1843
 41-1907
 F. TÁVORA arq.
 MAIO 1994
 DESENHO 234 PE 3.22
 ESCALA 1:100 E 1:200