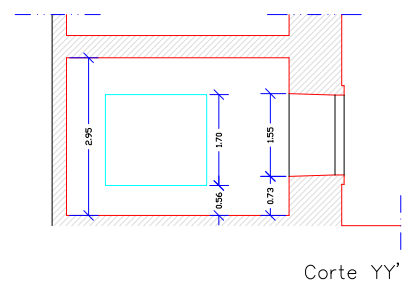
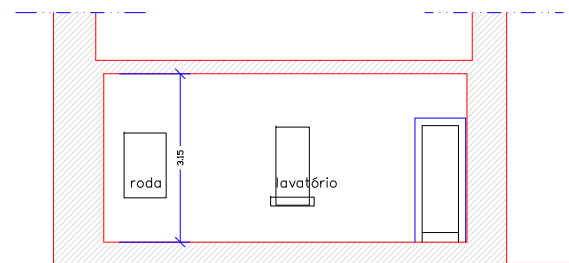


Planta do piso 1



Corte YY'



Corte ZZ'



D.O. : IPPAR, Direcção Regional de Coimbra

Local: Edifício de Apoio - CAPELA das CARMELITAS - AVEIRO

Técnico Responsável:

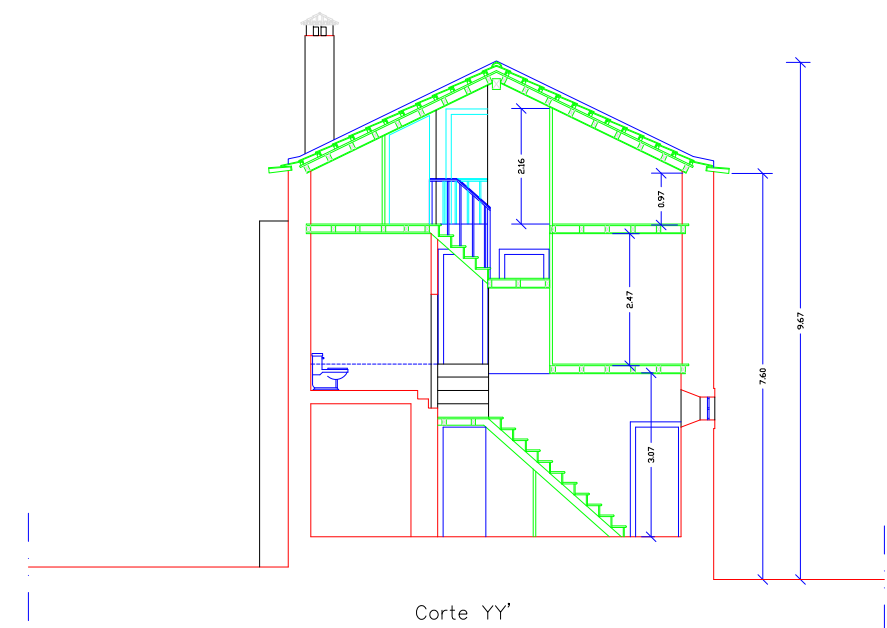
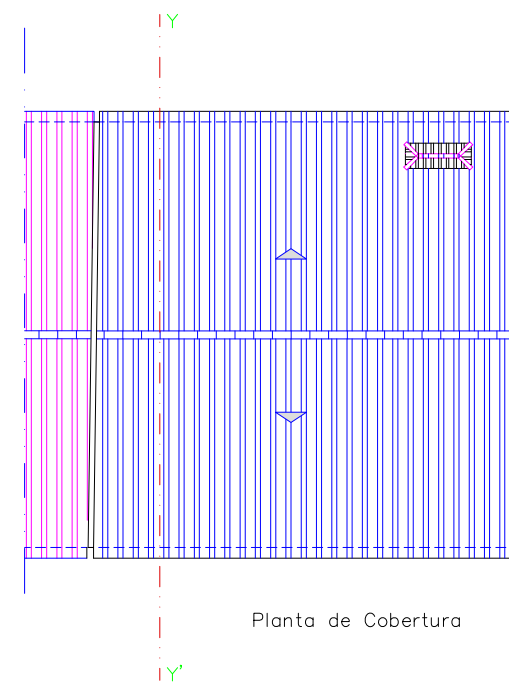
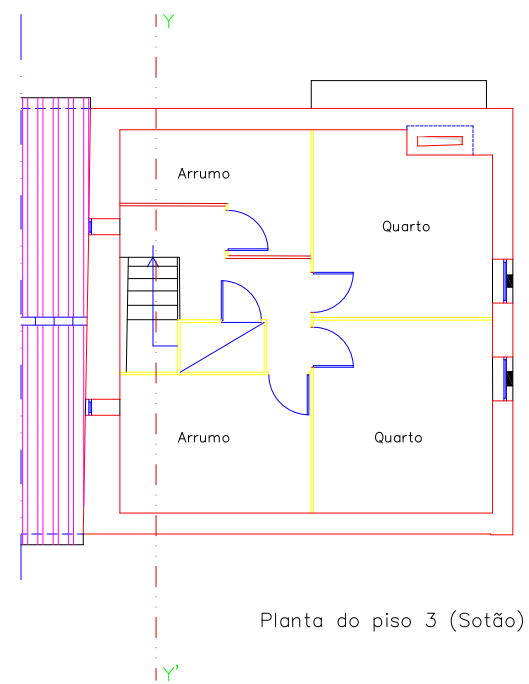
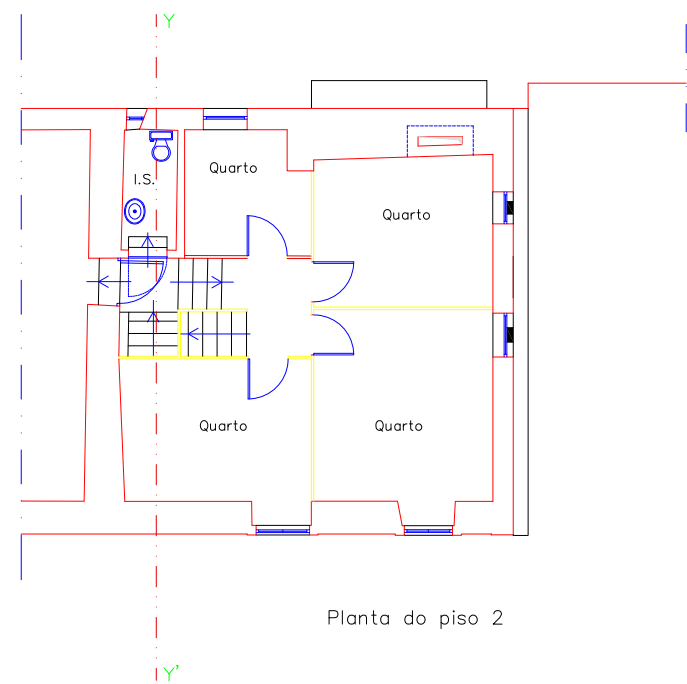
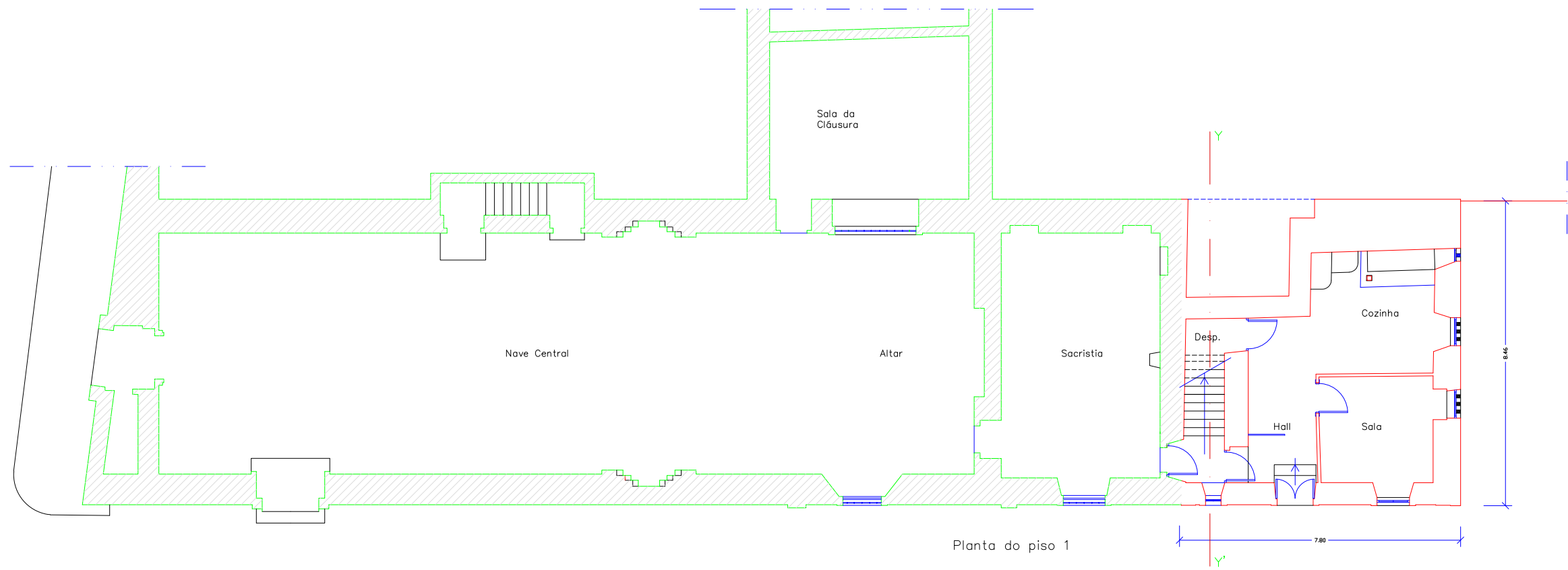
Parte Arquitectura
Fase Levantamento do Existente

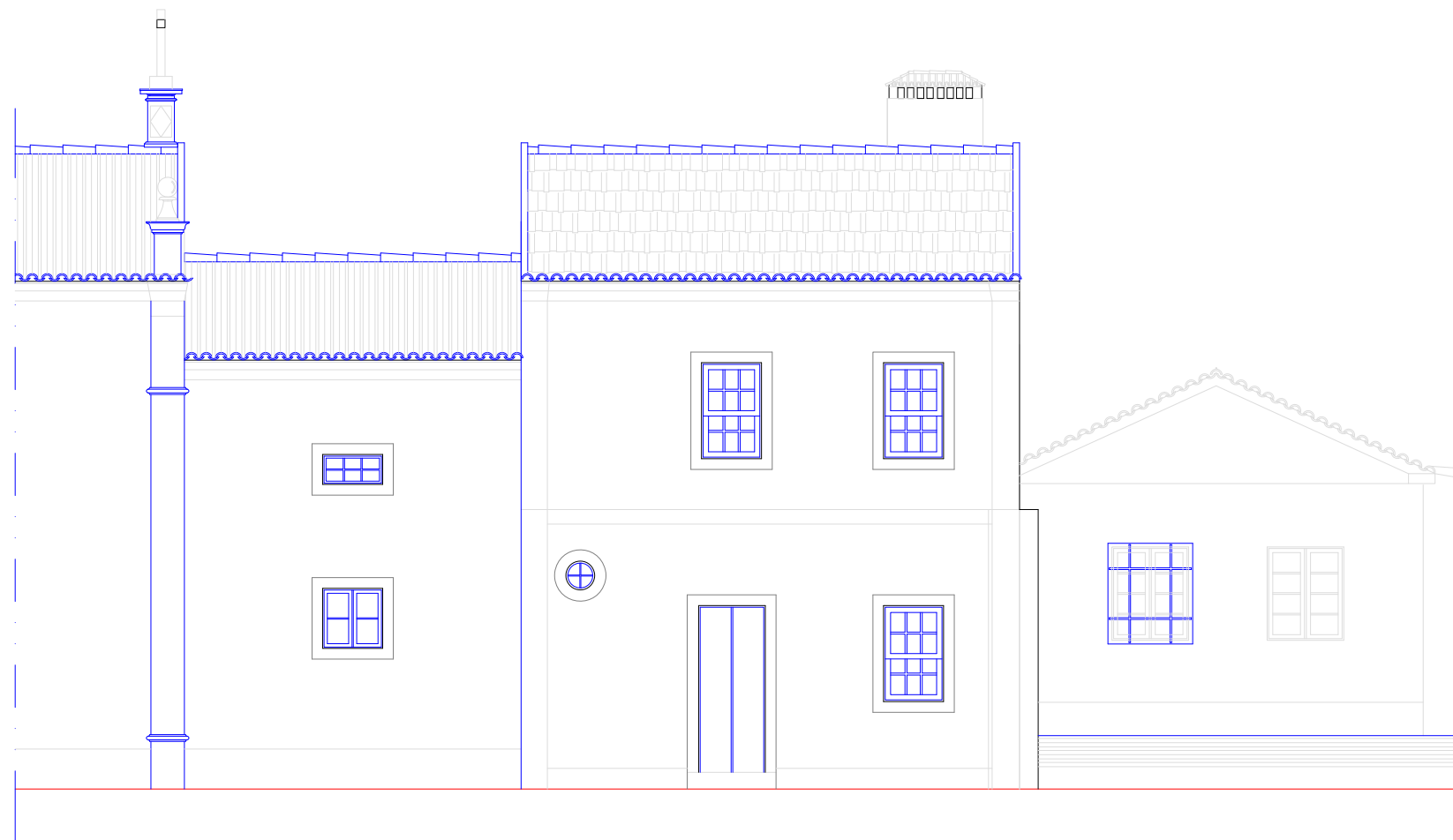
Desenhos :
PLANTA E CORTES

Escala 1/100

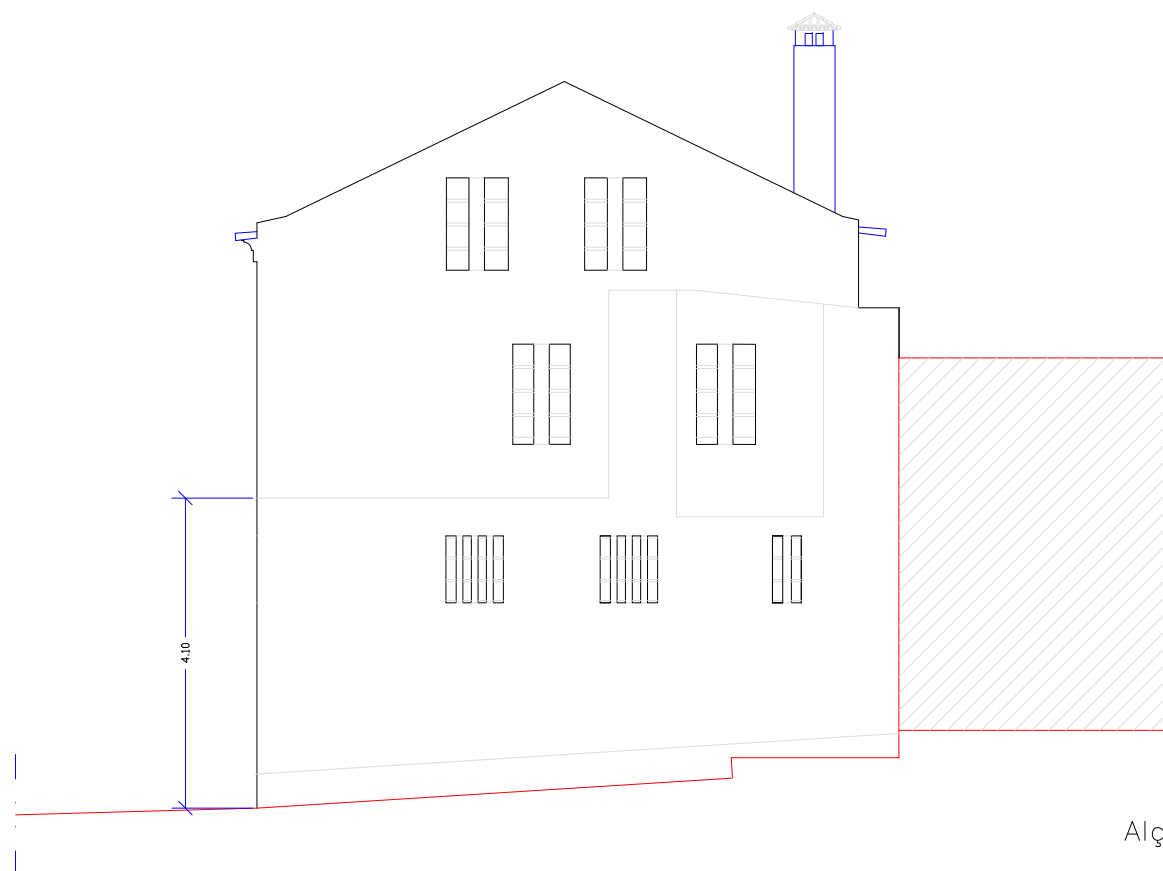
DG (-) 01 a 03

Folha nº
1





Alçado Principal



Alçado Lateral Direito

D:\José Baptista\Digitalização\simbolo ippar.JPG

D.D. : IPPAR, Direcção Regional de Coimbra
Local Edifício de Apoio - CAPELA das
CARMELITAS - AVEIRO

Técnico Responsável:

Parte Arquitectura
Fase Levantamento do Existente

Desenhos :
ALÇADOS

Escala 1/100

DG (--) 06 a 07

Folha nº
2