



LEVANTAMENTO ARQUITECTÓNICO  
CASTELO DE EVORAMONTE

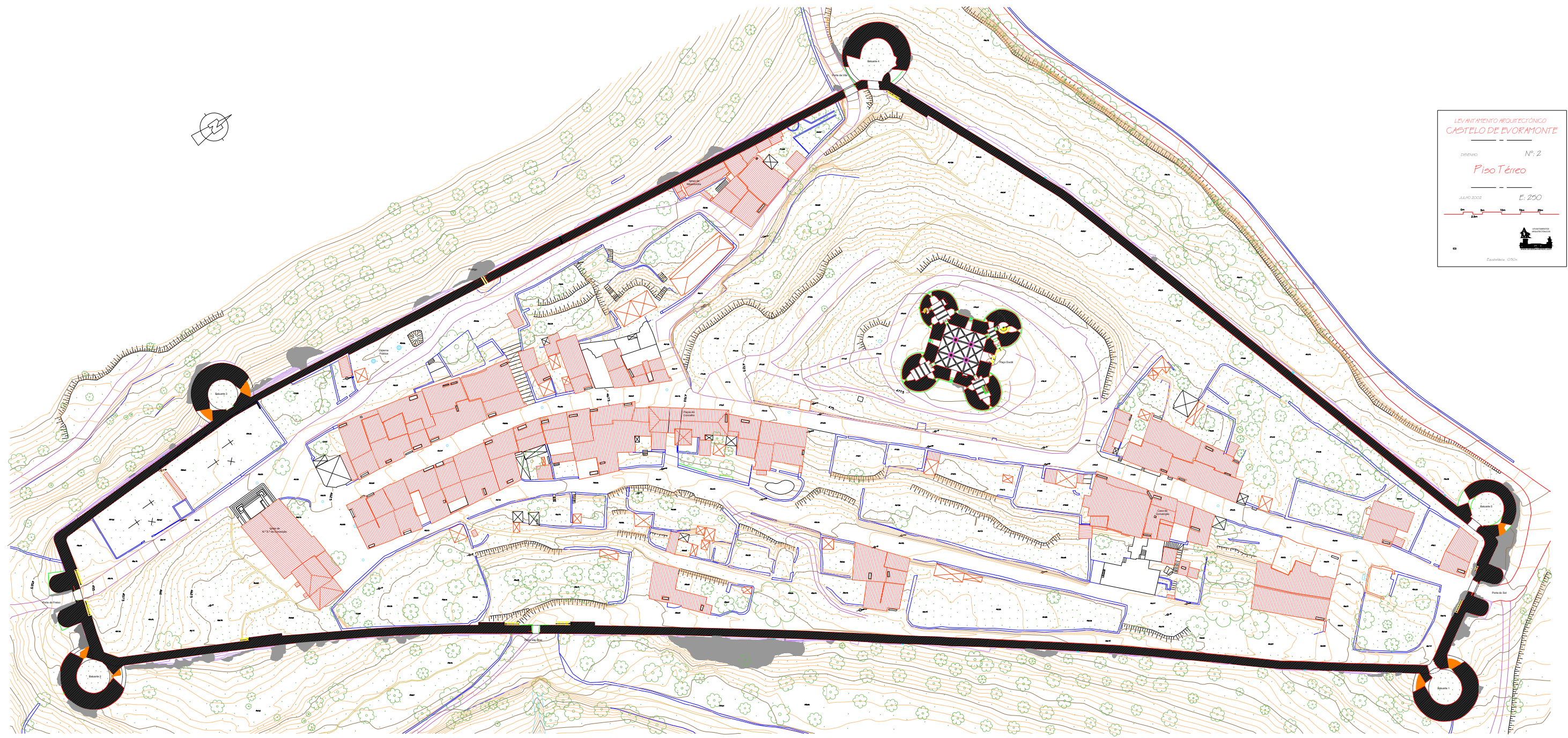
DESENHO Nº: 1

Planta Geral

JULHO 2002 E: 1000



Estúdios COO'n

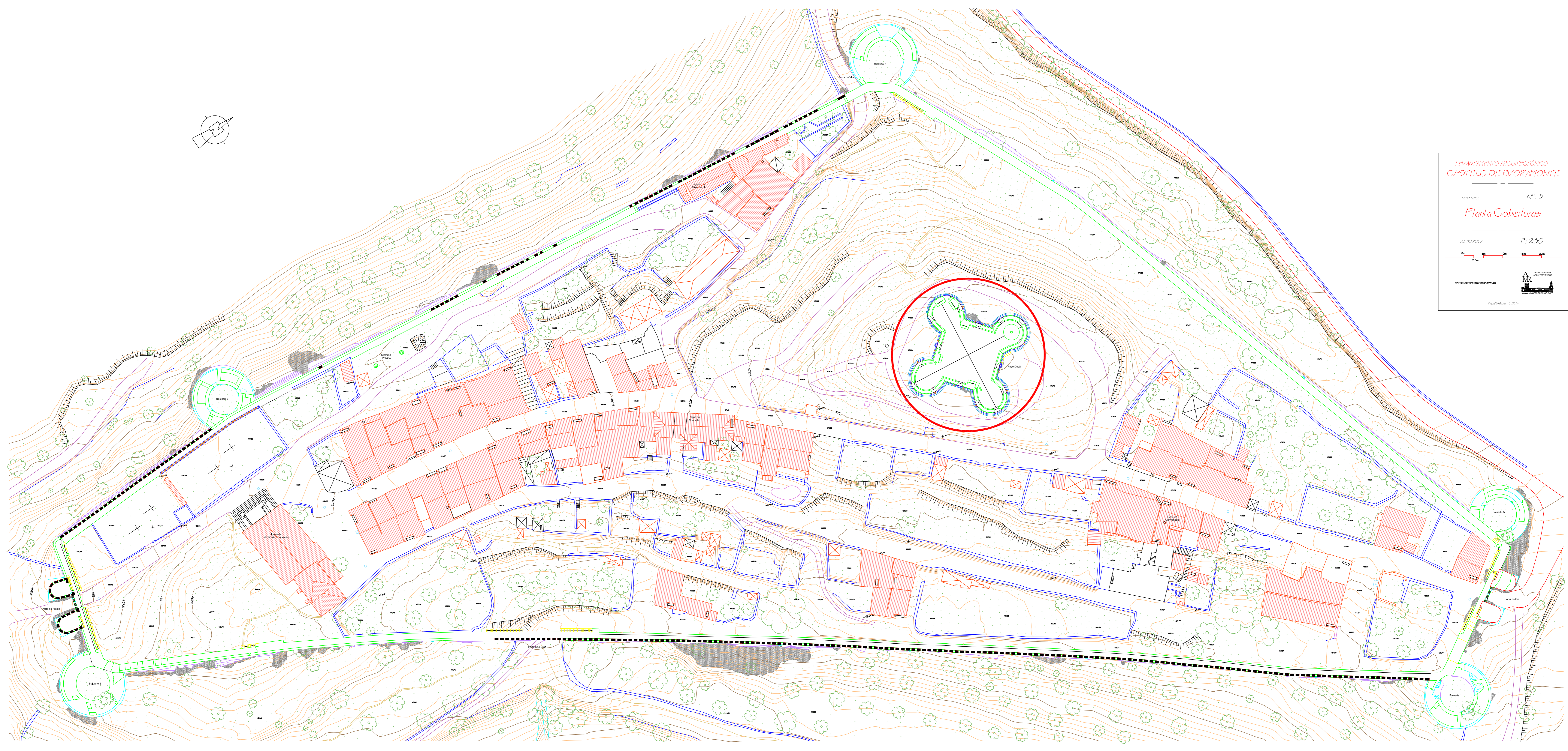
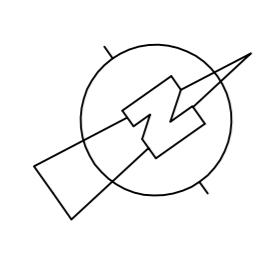


LEVANTAMENTO ARQUITECTÓNICO  
CASTELO DE EVORA MONTE

DESIGNO Nº. 2  
*Piso Têrreo*

JULHO 2002 E. 250

Escala: 1:250



LEVANTAMENTO ARQUITETÓNICO  
CASTELO DE EVORAMONTE

OBJETO: Nº 3  
*Planta Coberturas*

MAIO 2002 E. 250

ESCALA: 1:250

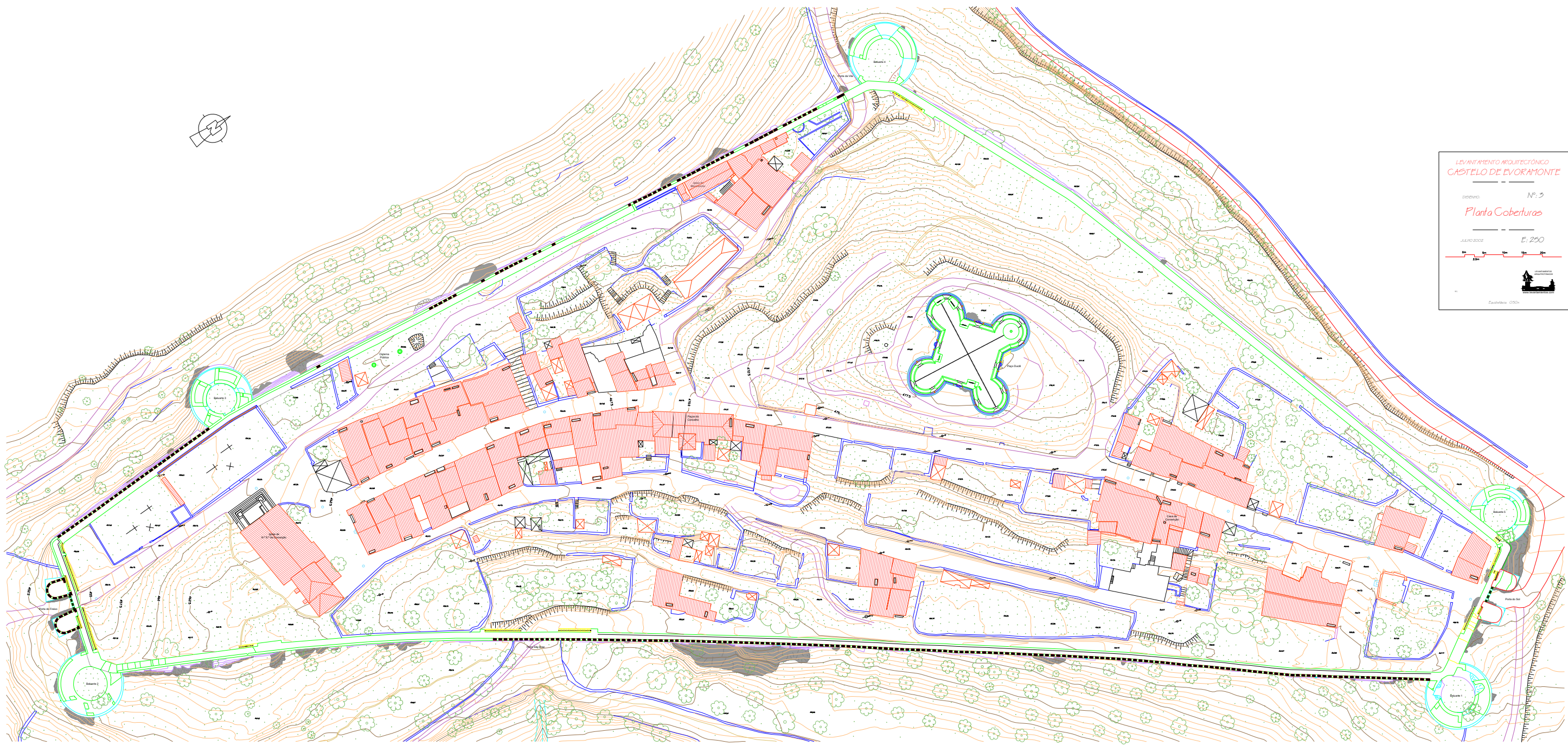


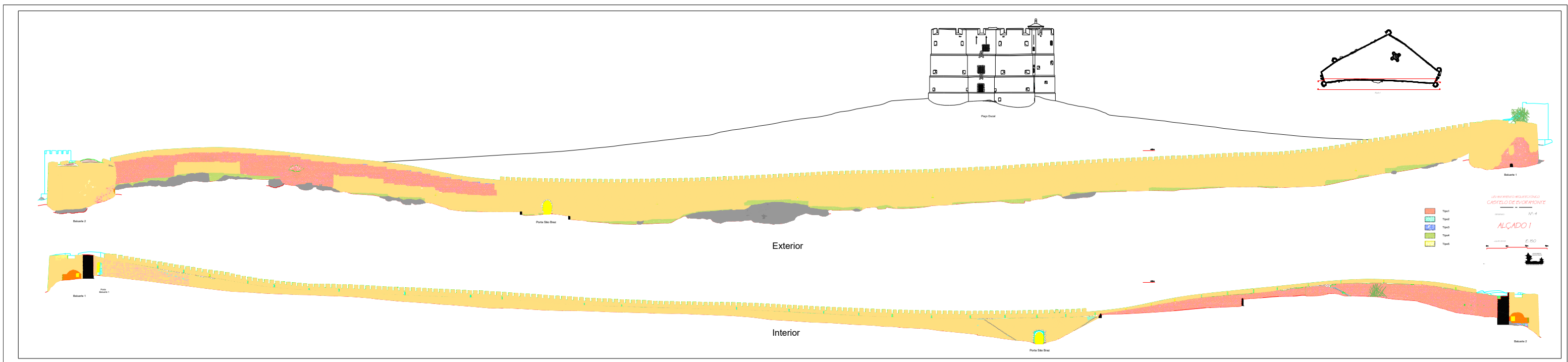
LEVANTAMIENTO ARQUITECTÓNICO  
CASTELO DE EVORAMONTE

INDICE Nº. 5  
*Planta Coberturas*

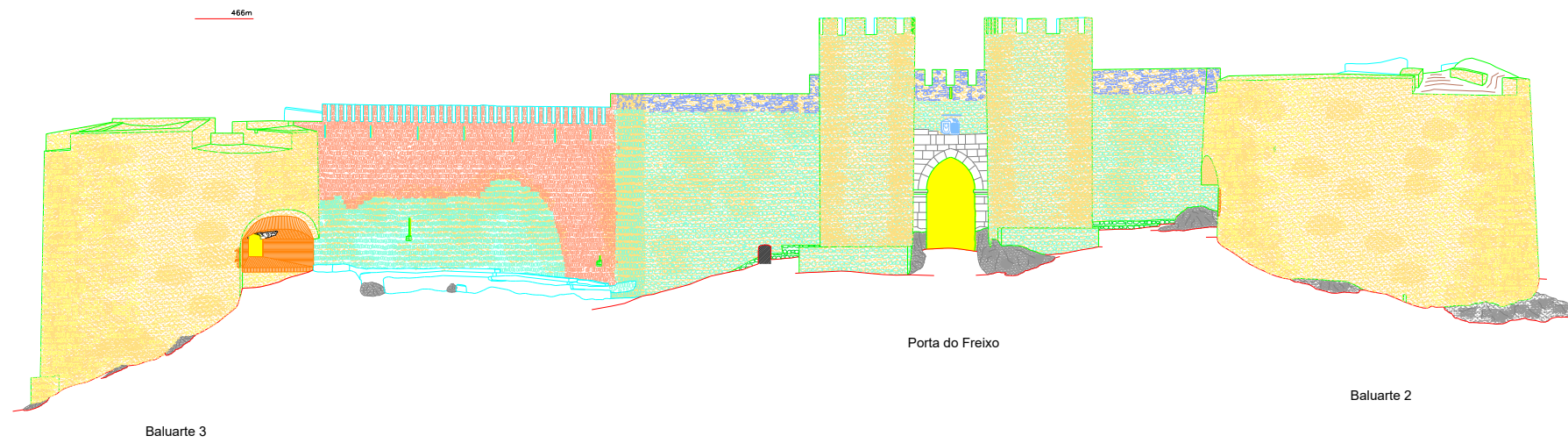
AÑO 2008 E. 250

Escala: 1:250



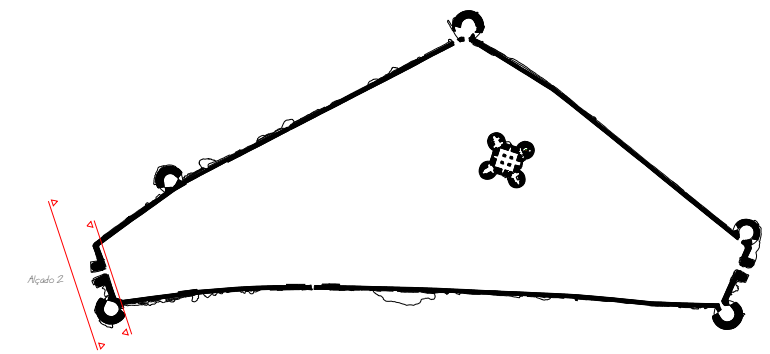
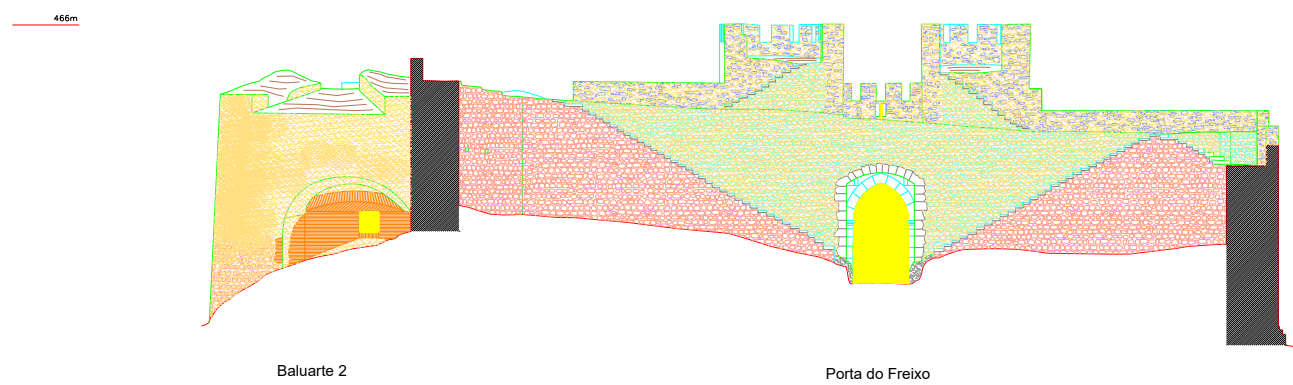


### Exterior



- Tipo1
- Tipo2
- Tipo3
- Tipo4
- Tipo5

### Interior



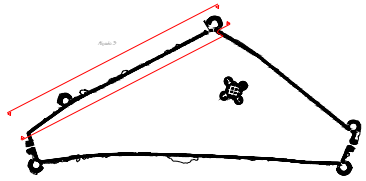
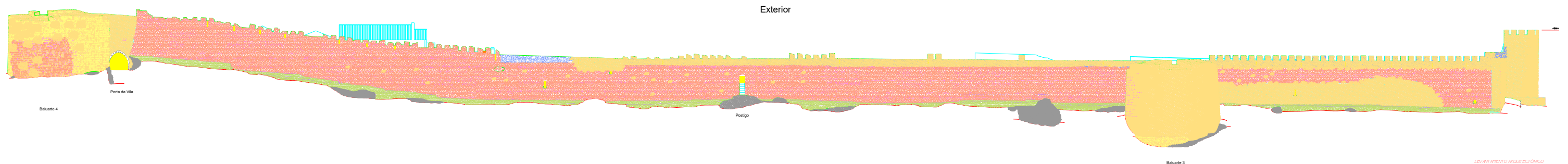
LEVANTAMENTO ARQUITECTÓNICO  
CASTELO DE EVORAMONTE

DESENHO Nº: 5

ALÇADO 2

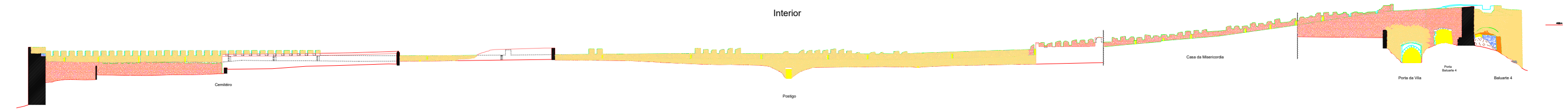
JULHO 2002 E: 150

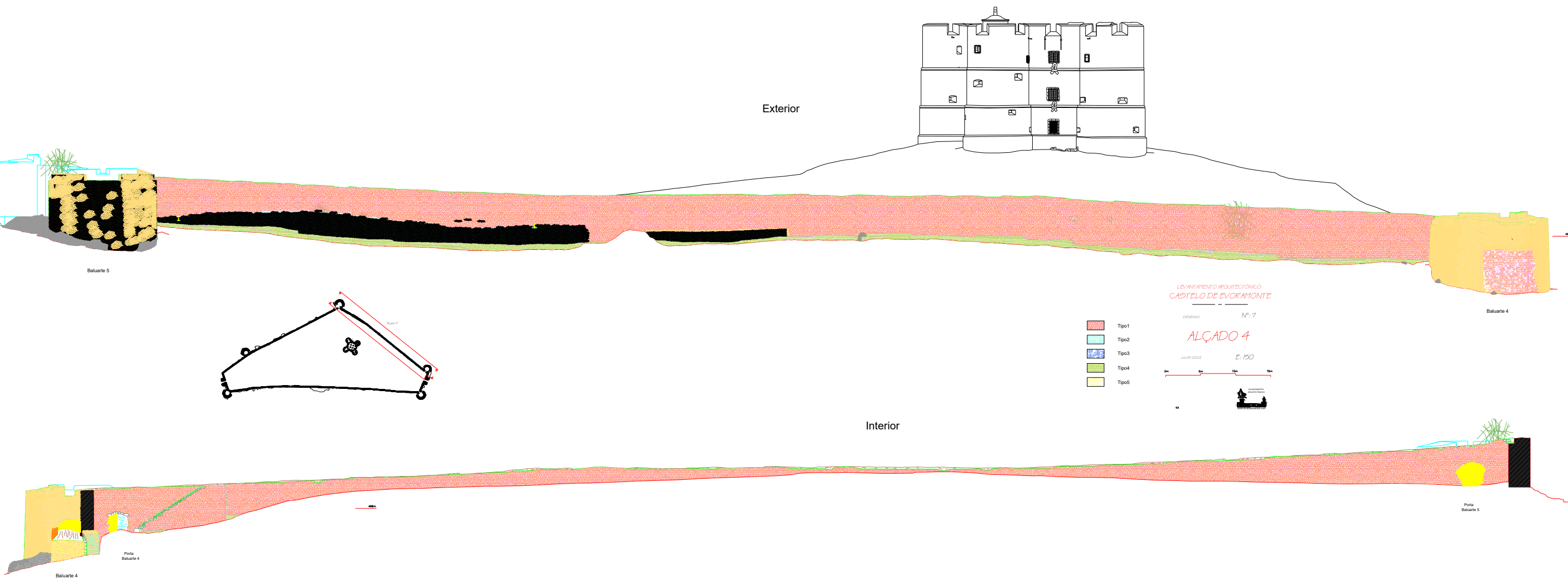




- Tip01
- Tip02
- Tip03
- Tip04
- Tip05

LEVANTAMENTO ARQUITETÓNICO  
CASTELO DE EVORA MONTE  
CONTINENTE Nº. 6  
ALÇADO 3  
JULHO 2022 E. 150





Exterior

Interior

Balaarte 5

Balaarte 4

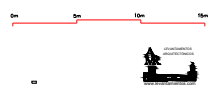
LEVANTAMENTO ARQUITETÓNICO  
CASTELO DE EVORA MONTE

ORDENADO Nº: 7

ALÇADO 4

JULHO 2002 E: 100

- Tpo1
- Tpo2
- Tpo3
- Tpo4
- Tpo5

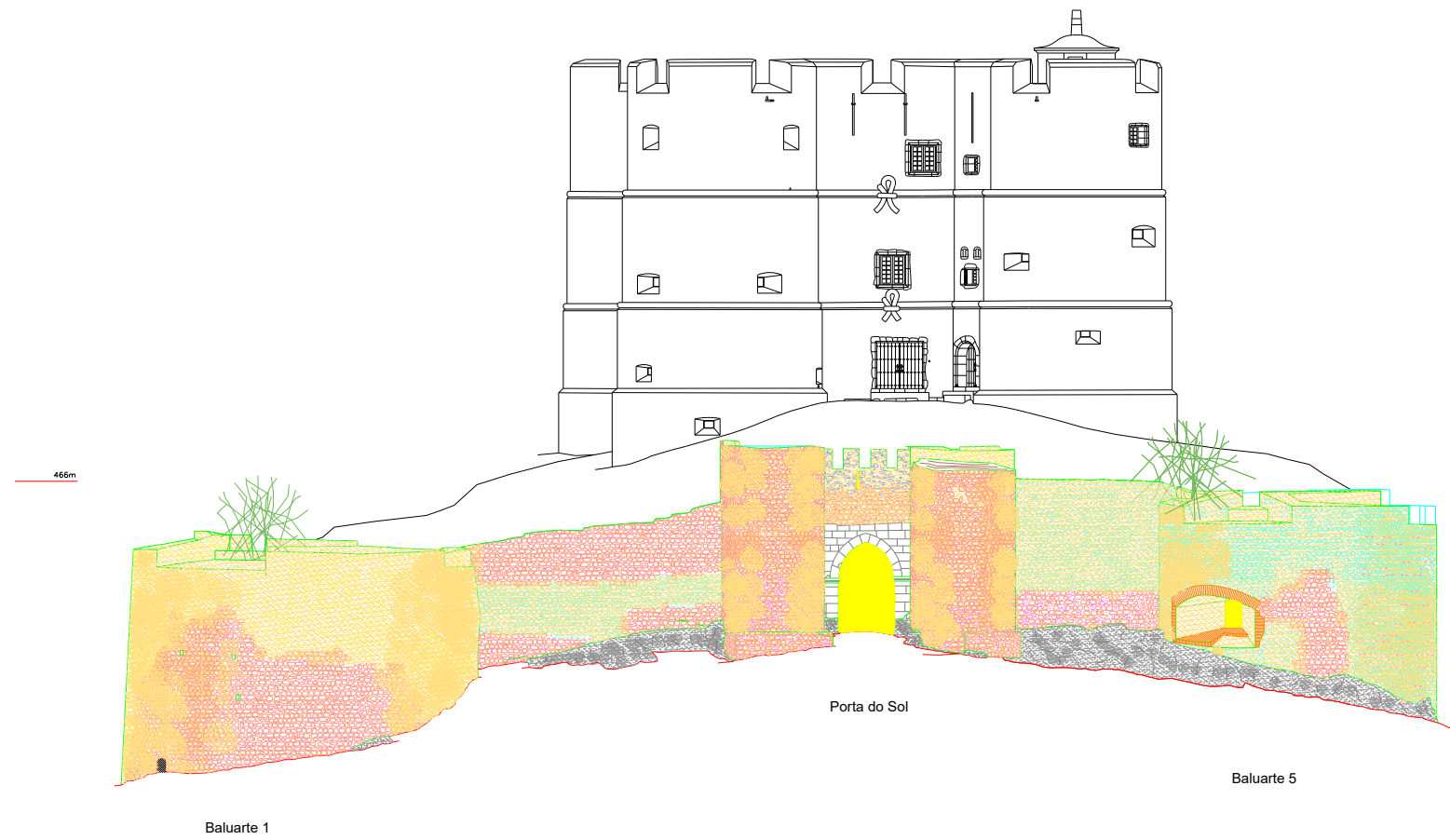


Balaarte 4

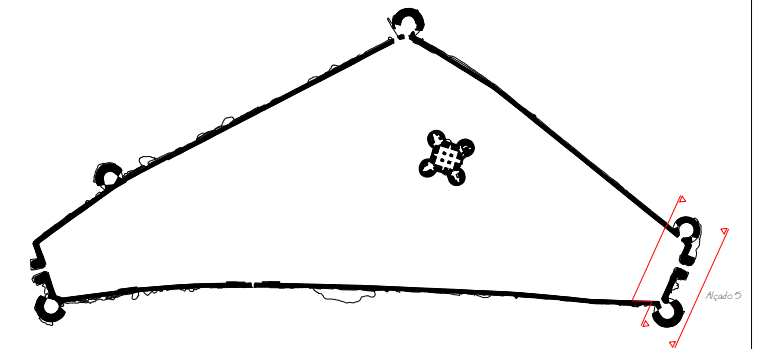
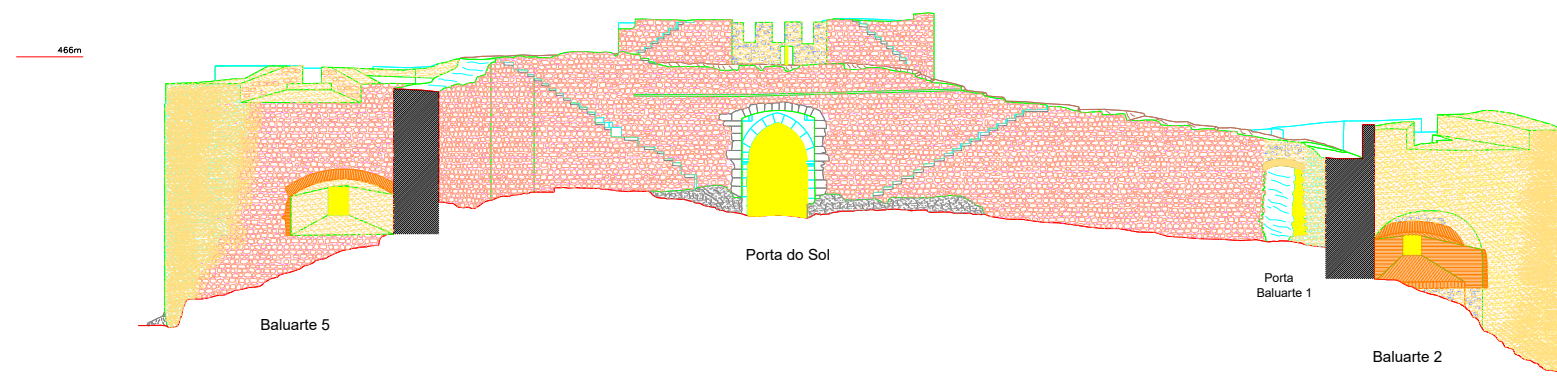
Porta Balaarte 4

Porta Balaarte 5

Exterior



Interior



- Tipo1
- Tipo2
- Tipo3
- Tipo4
- Tipo5

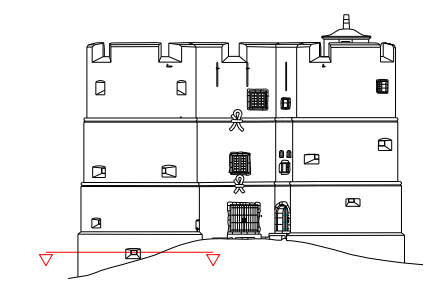
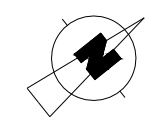
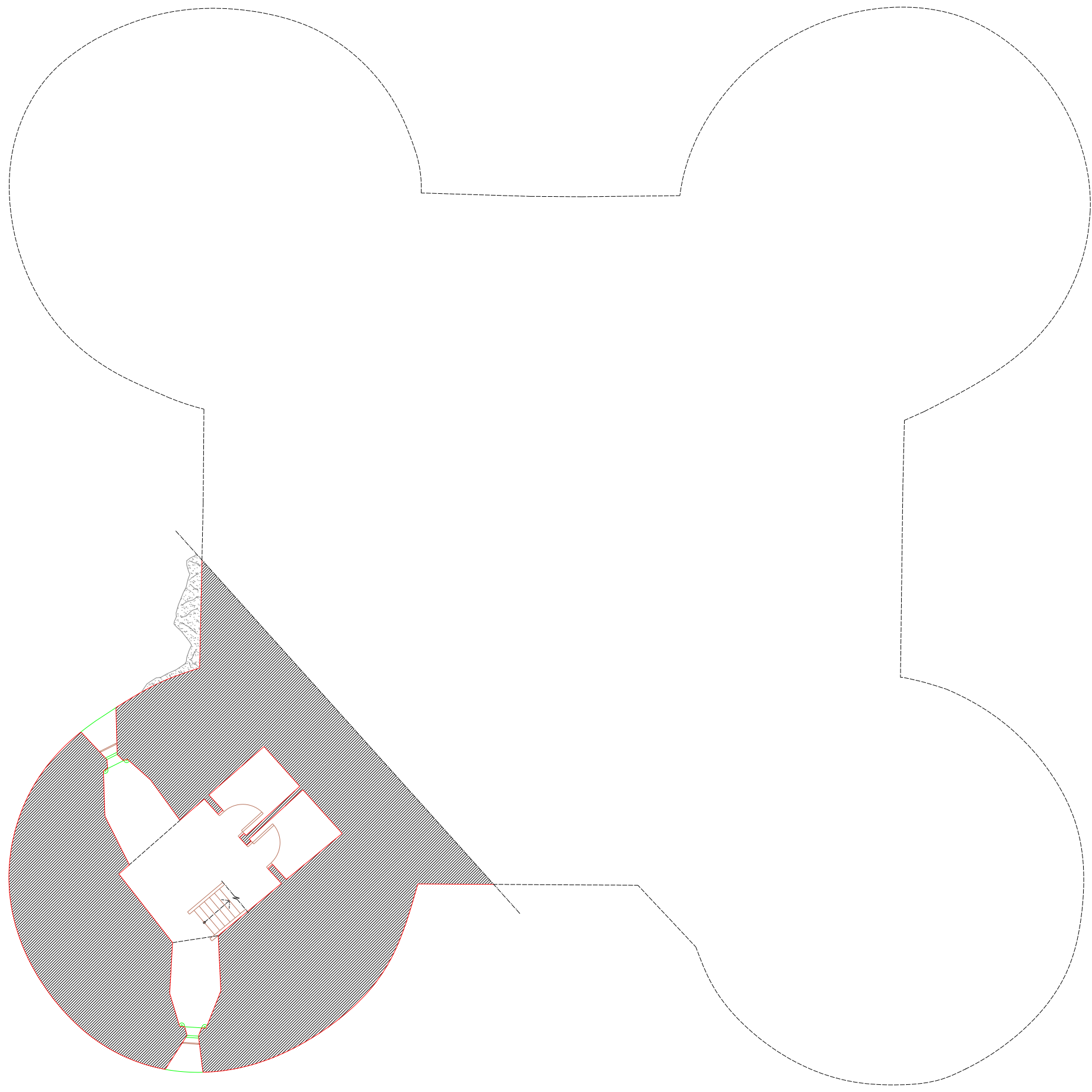
LEVANTAMENTO ARQUITECTÓNICO  
CASTELO DE EVORAMONTE

DESENHO: Nº: 8

ALÇADO 5

JULHO 2002 E: 150



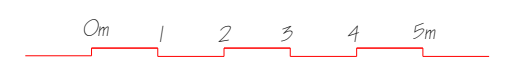


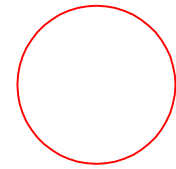
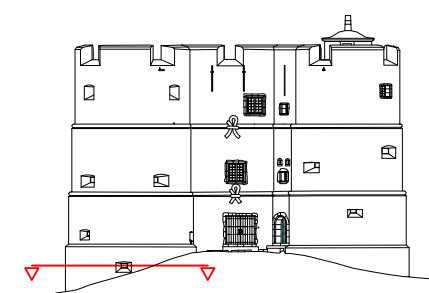
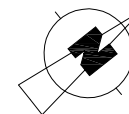
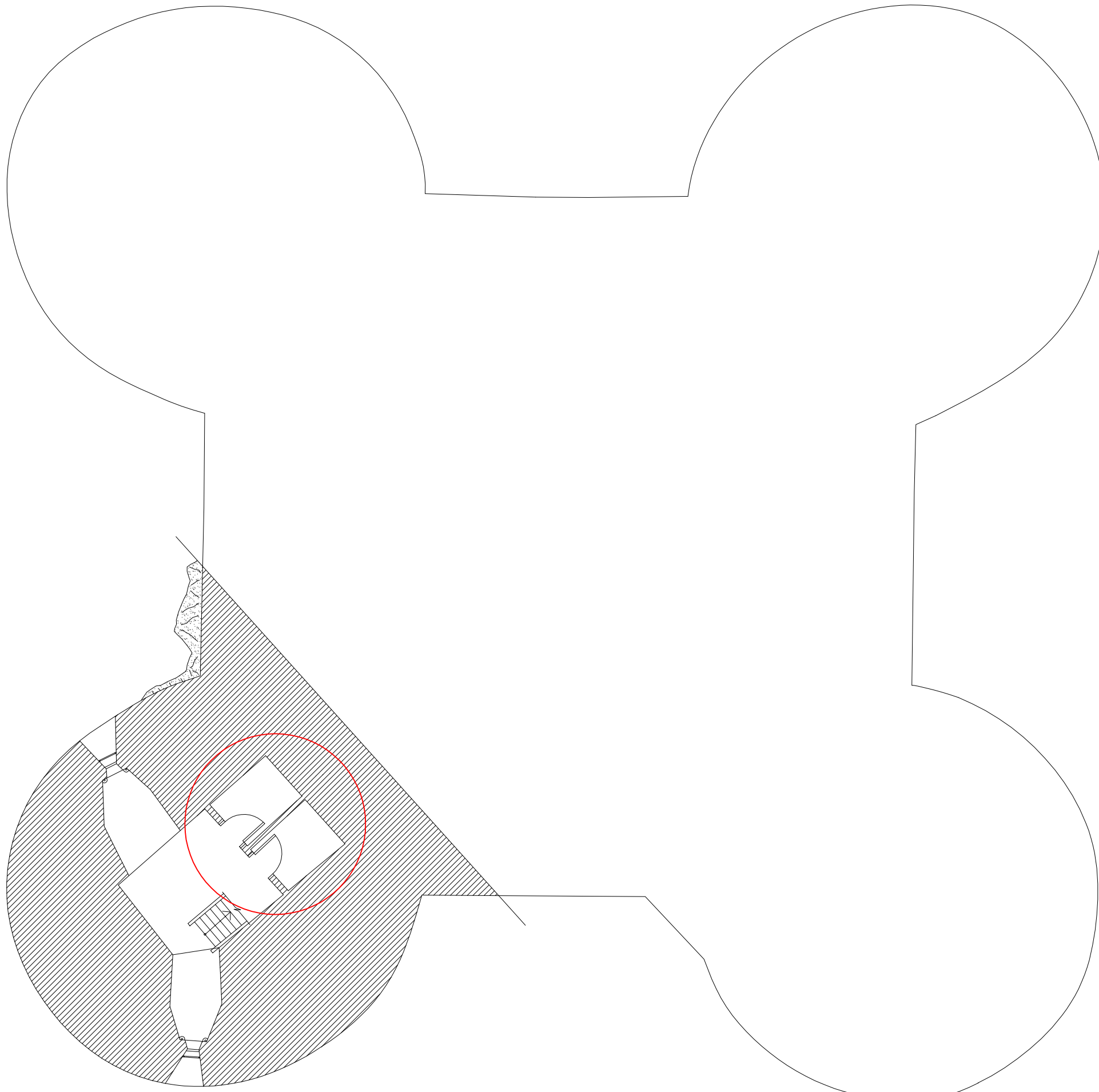
LEVANTAMENTO ARQUITECTÓNICO  
CASTELO DE ÉVORAMONTE

DESENHO: Nº: 9

PISO -1

ABRIL 2002 E: 1/75





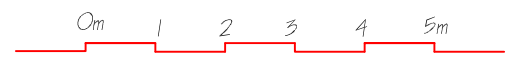
CASAS DE BANHO A RECUPERAR

LEVANTAMENTO ARQUITECTÓNICO  
CASTELO DE ÉVORAMONTE

DESENHO: Nº: 9

PISO -1

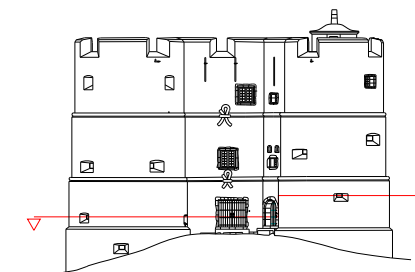
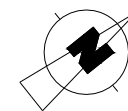
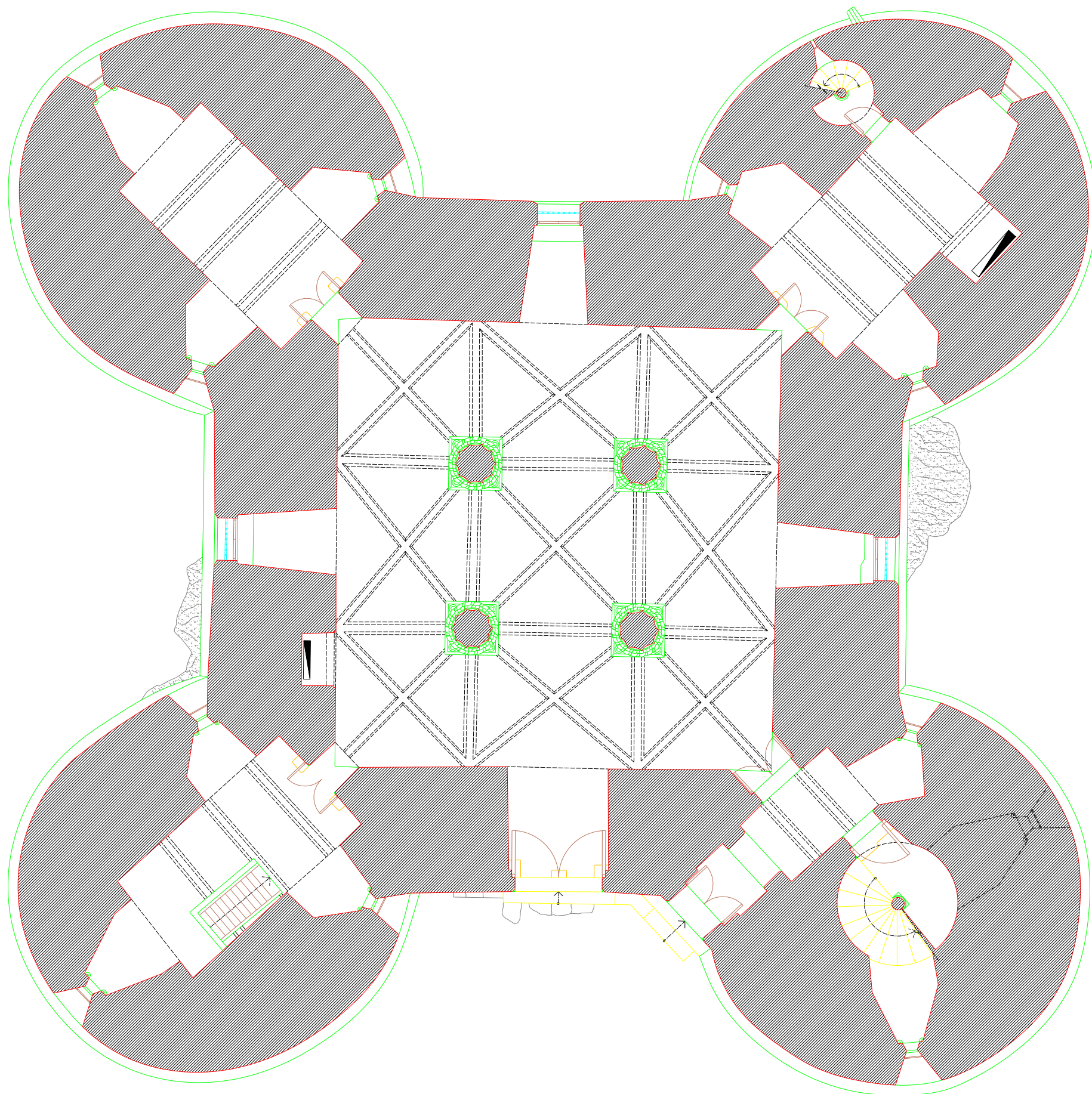
ABRIL 2002 E: 1/75



C:\univ\m\l\evora\evora\p1\p1.dwg



www.levantamientos.com



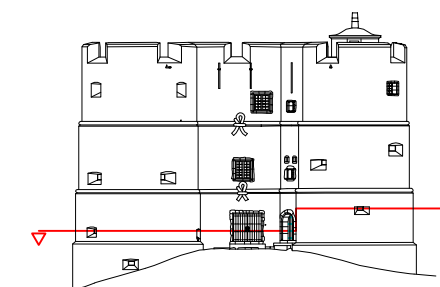
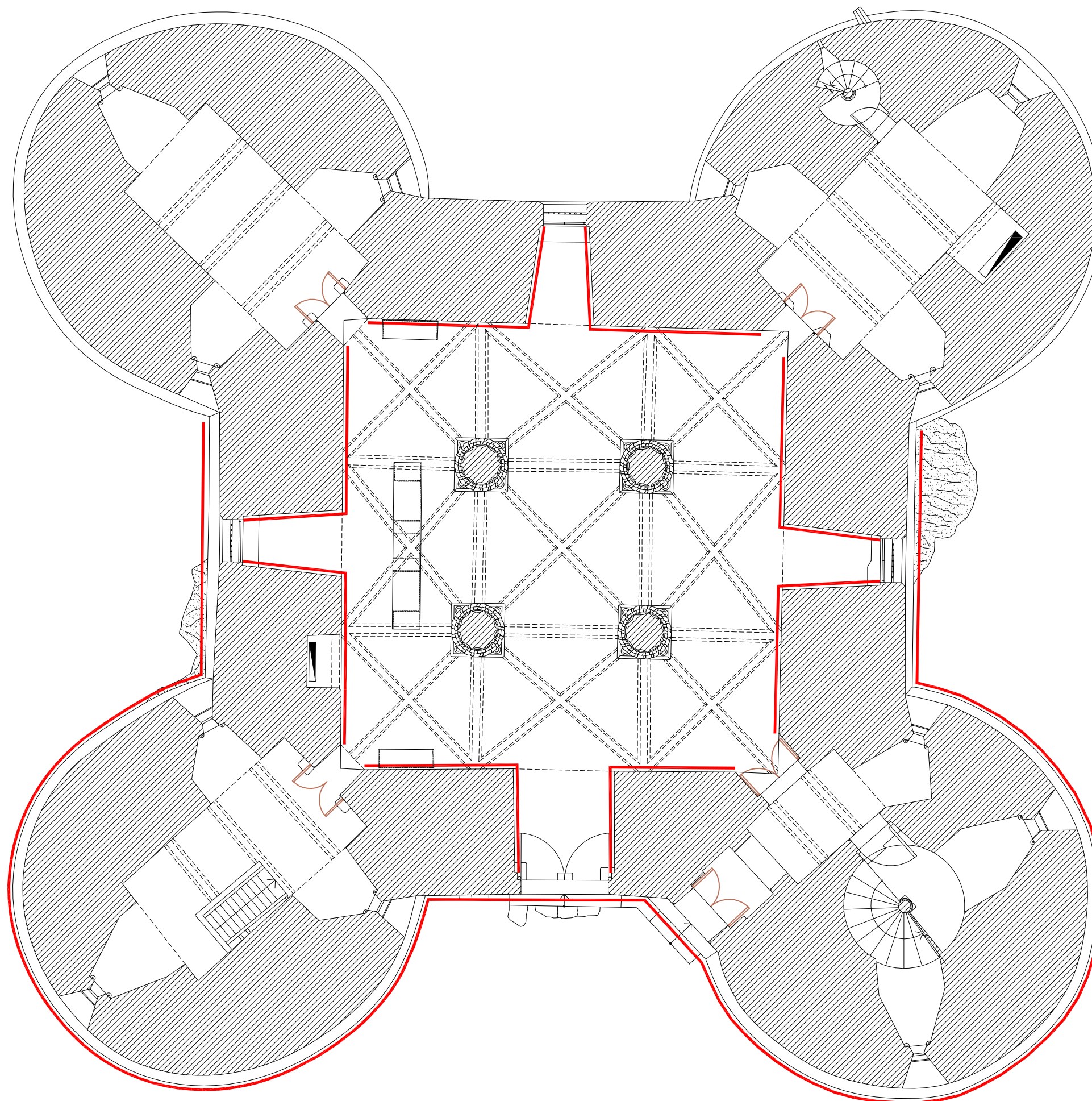
LEVANTAMENTO ARQUITECTÓNICO  
CASTELO DE ÉVORAMONTE

DESENHO: Nº: 10

PISO TÉRREO

ABRIL 2002 E: 1/75





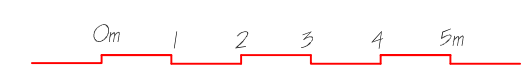
— REBOCOS A REPARAR

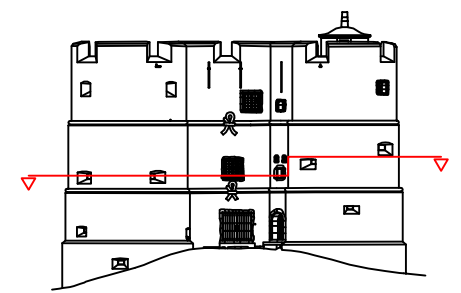
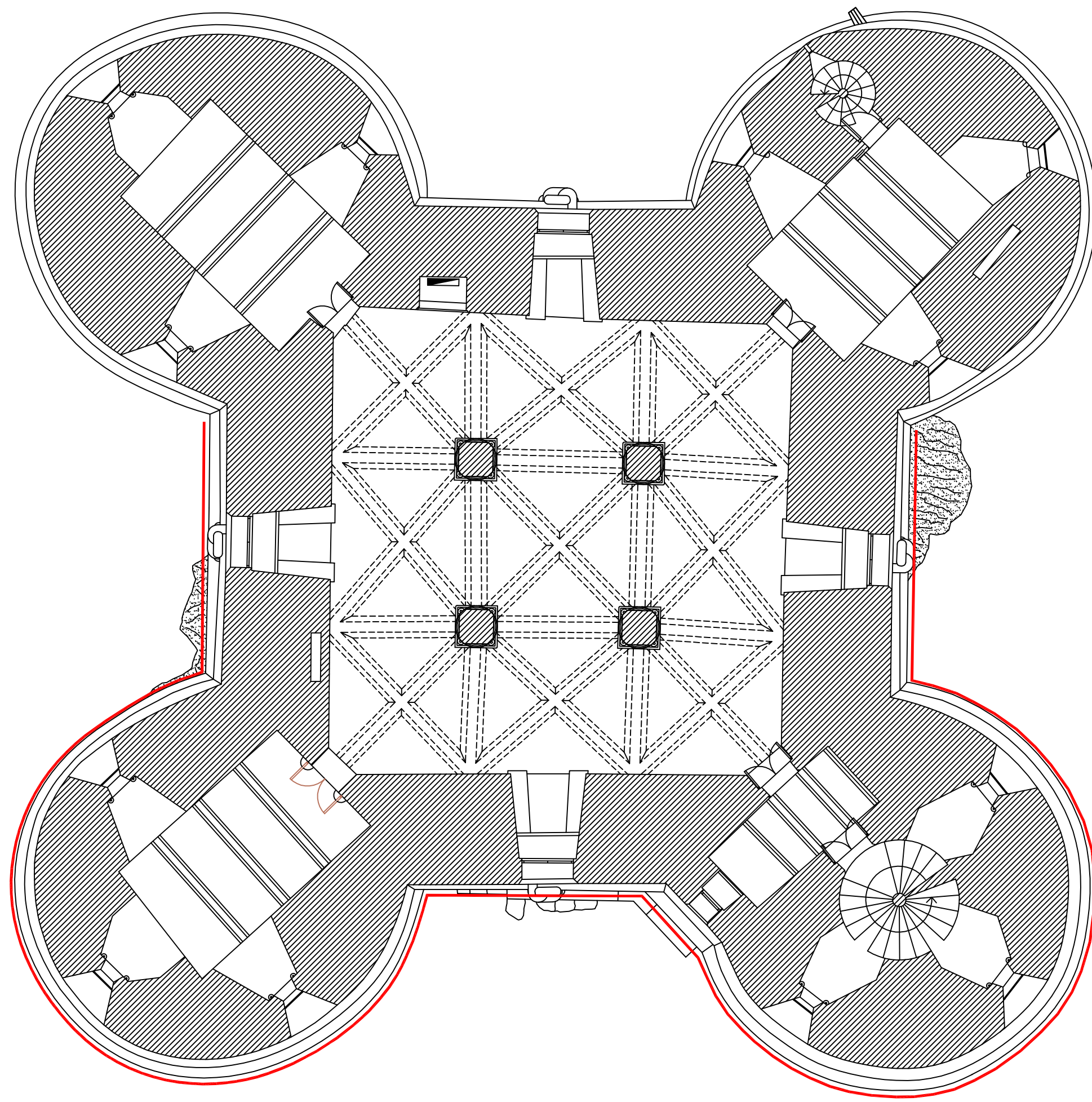
LEVANTAMENTO ARQUITECTÓNICO  
CASTELO DE ÉVORAMONTE

DESENHO: Nº: 10

PISO TÉRREO

ABRIL 2002 E: 1/75





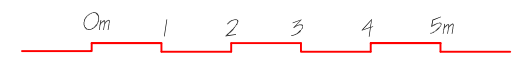
— REBOCOS A REPARAR

LEVANTAMENTO ARQUITECTÓNICO  
CASTELO DE ÉVORAMONTE

DESENHO: Nº: 11

PISO 1

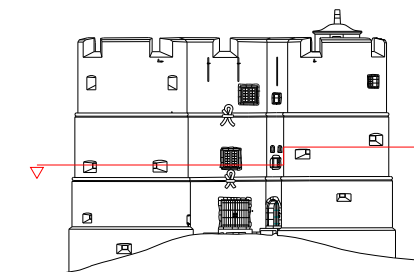
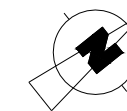
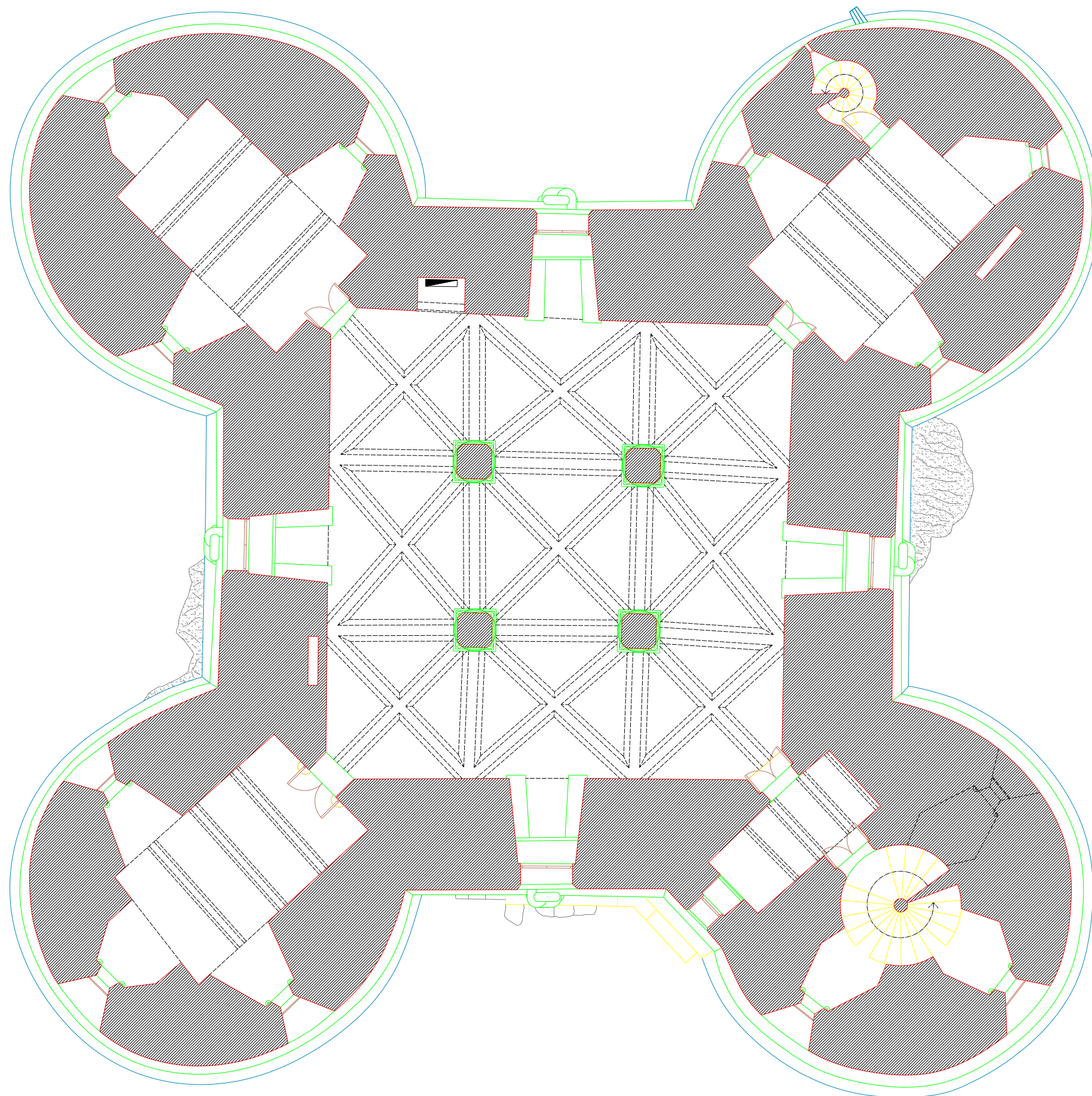
ABRIL 2002 E: 1/75



© Levantamentos Arquitectónicos e Arqueológicos



www.levantamentos.com



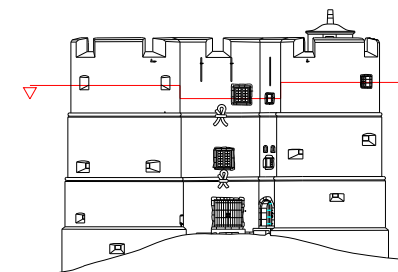
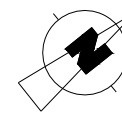
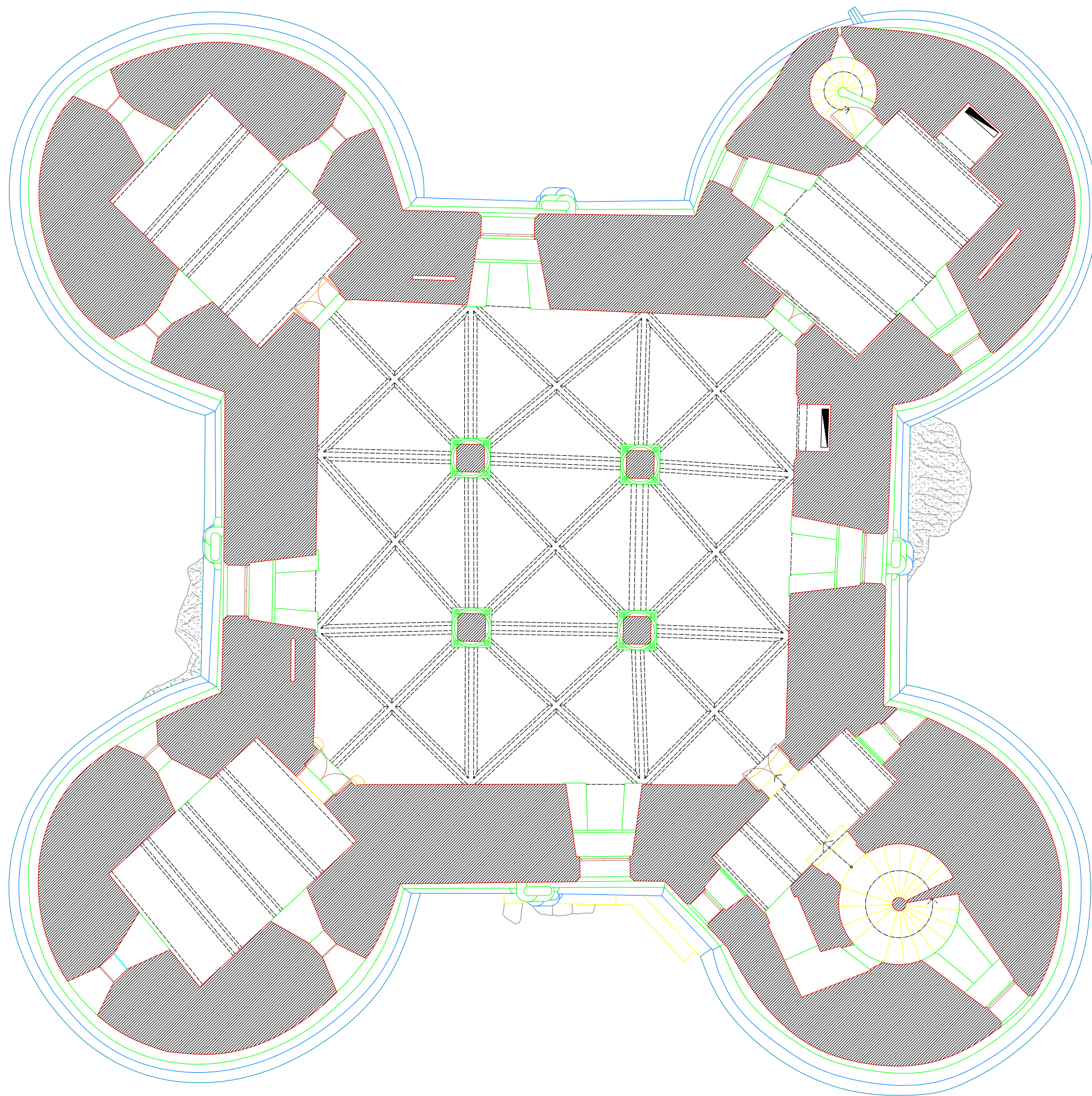
LEVANTAMENTO ARQUITECTÓNICO  
CASTELO DE ÉVORAMONTE

DESENHO: Nº: 11

PISO 1

ABRIL 2002 E: 1/75





LEVANTAMENTO ARQUITECTÓNICO  
CASTELO DE ÉVORAMONTE

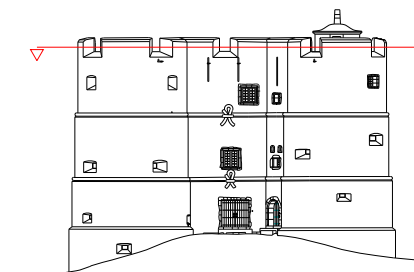
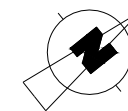
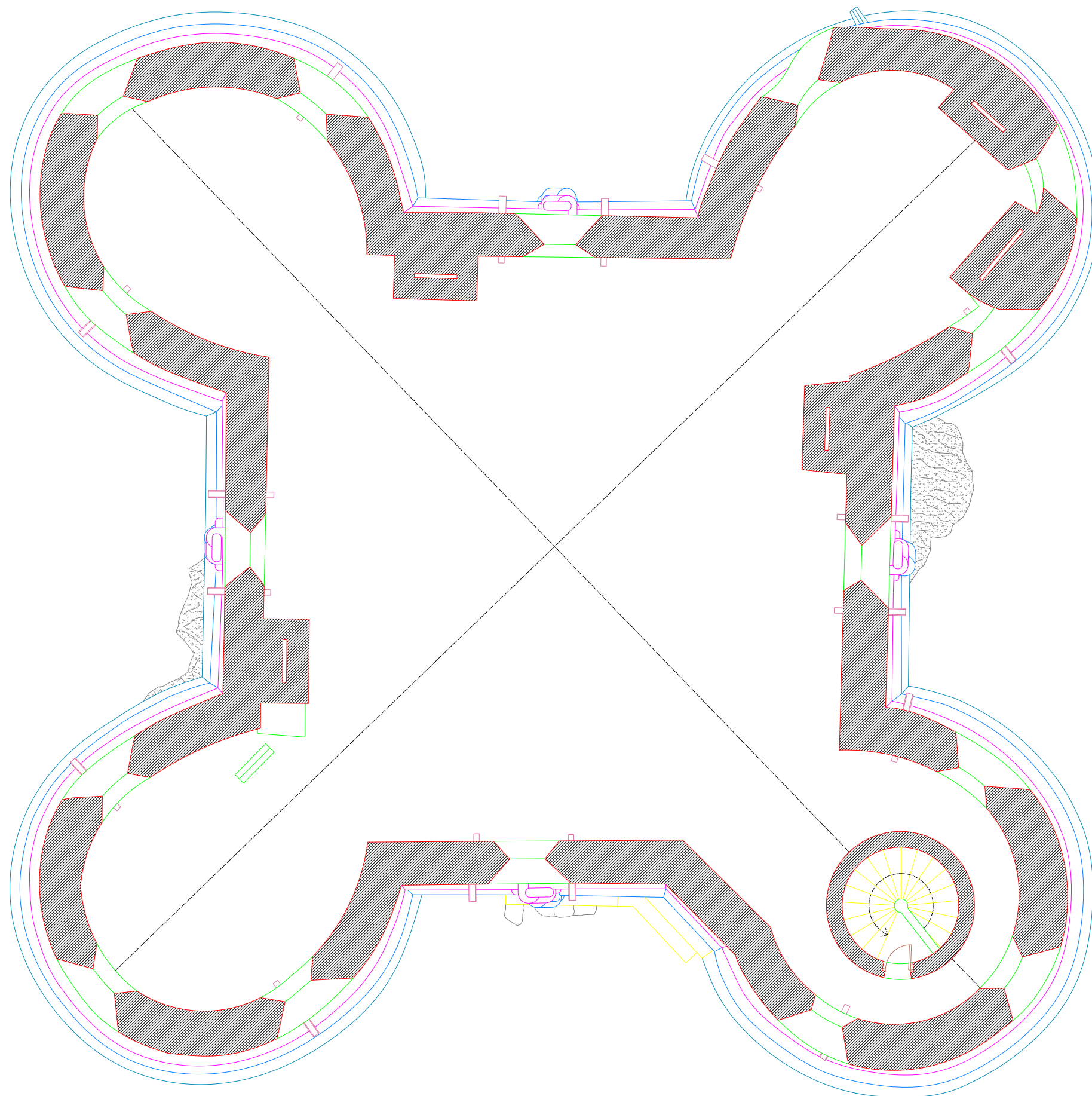
DESENHO: Nº: 12

PISO 2

ABRIL 2002 E: 1/75



www.levantamientos.com



LEVANTAMENTO ARQUITECTÓNICO  
CASTELO DE ÉVORAMONTE

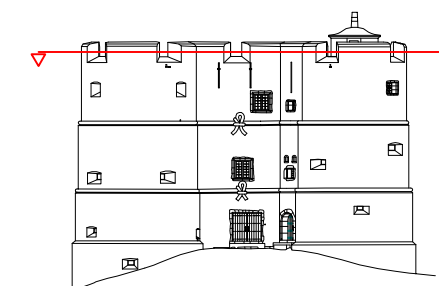
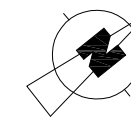
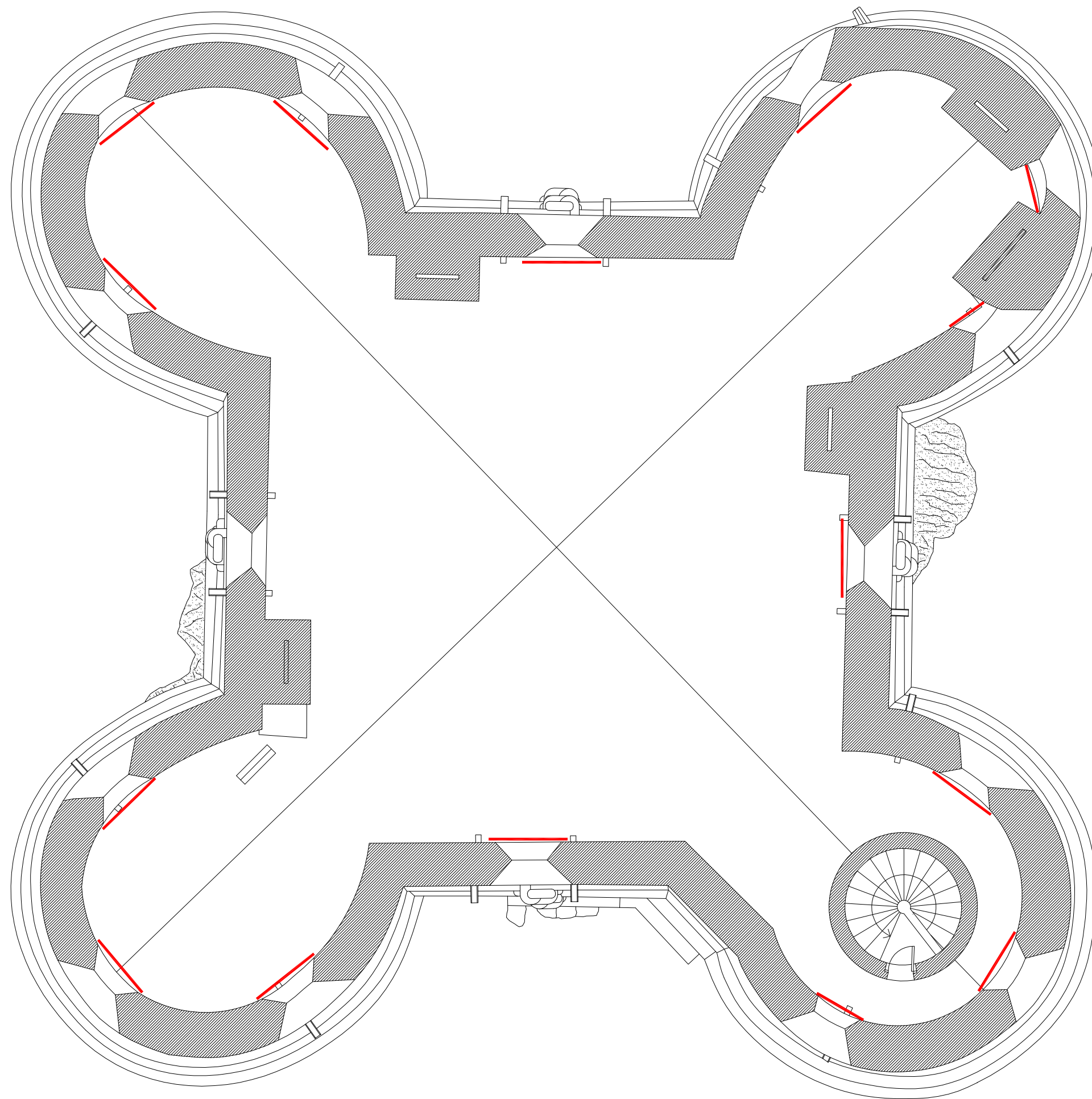
DESENHO: Nº: 13

PISO DO TERRAÇO

ABRIL 2002 E: 1/75



LEVANTAMENTOS  
ARQUITECTÓNICOS  
E ARQUEOLÓGICOS  
www.levantamientos.com



— PAINÉIS A COLOCAR NAS AMEIAS

LEVANTAMENTO ARQUITECTÓNICO  
CASTELO DE ÉVORAMONTE

DESENHO: Nº: 13

PISO DO TERRAÇO

ABRIL 2002

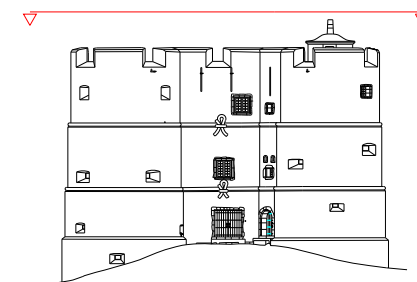
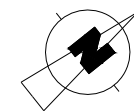
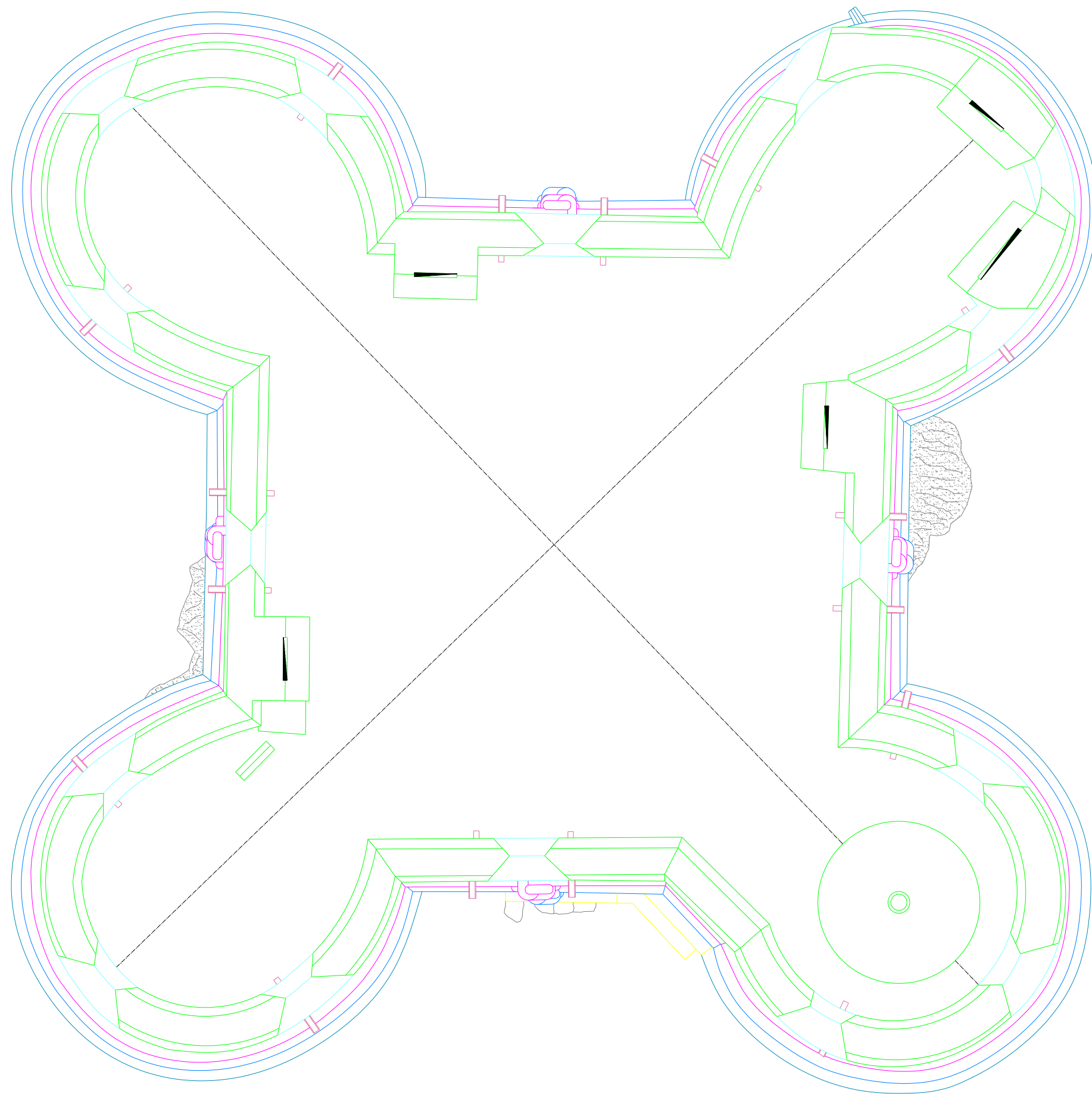
E: 1/75



© Universidade de Évora - UPEv



[www.levantamentos.com](http://www.levantamentos.com)



LEVANTAMENTO ARQUITECTÓNICO  
CASTELO DE ÉVORAMONTE

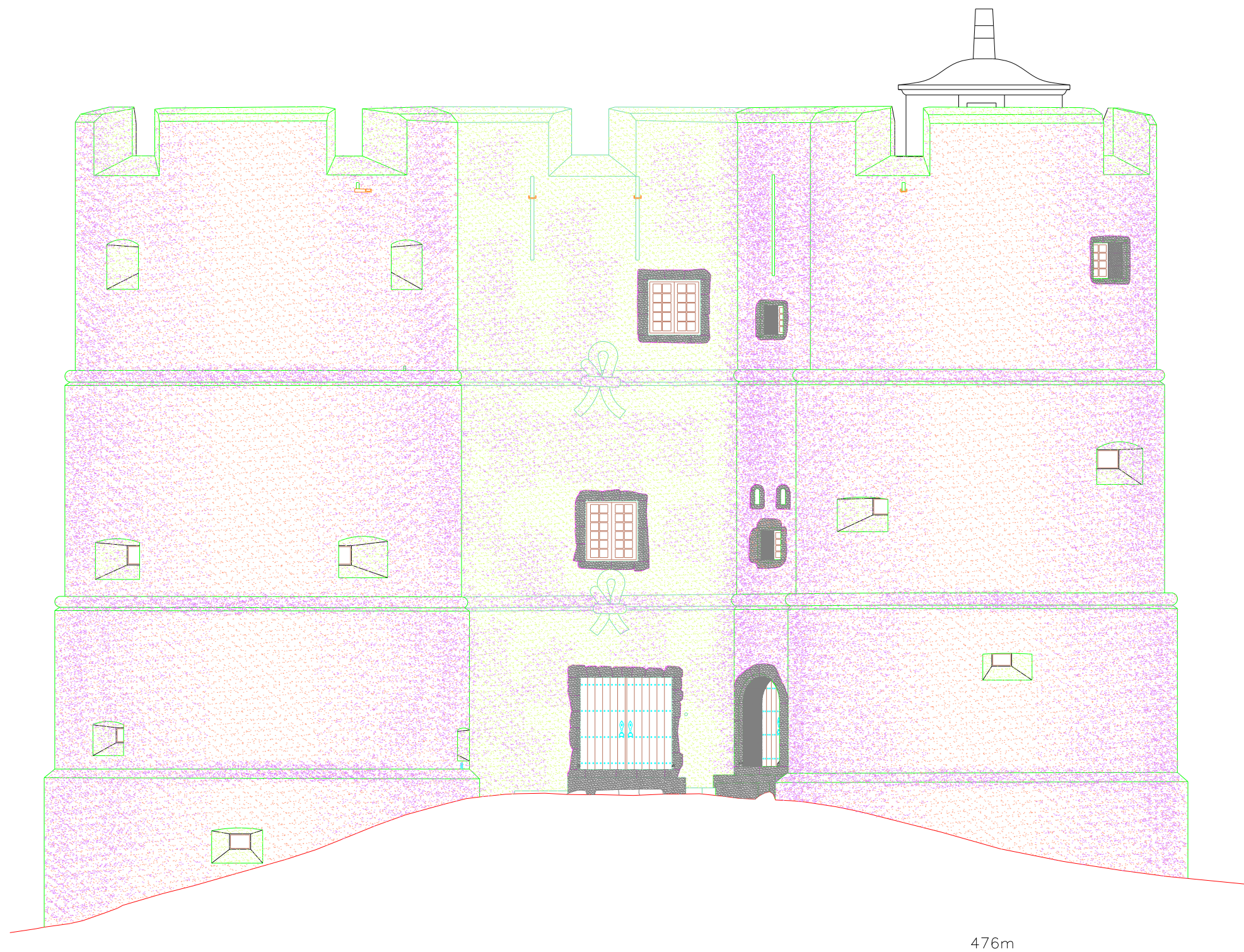
DESENHO: Nº: 14

PLANTA COBERTURAS

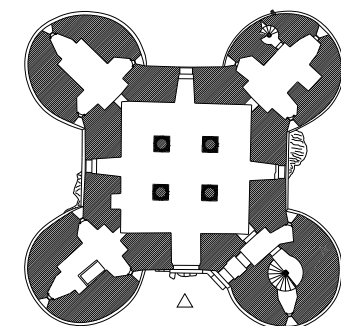
ABRIL 2002 E: 1/75



www.levantamientos.com



476m



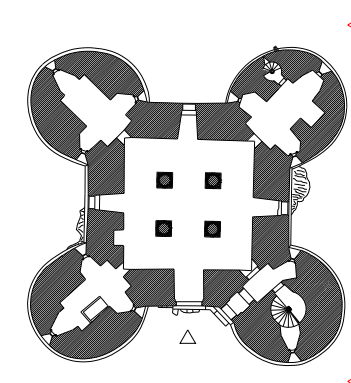
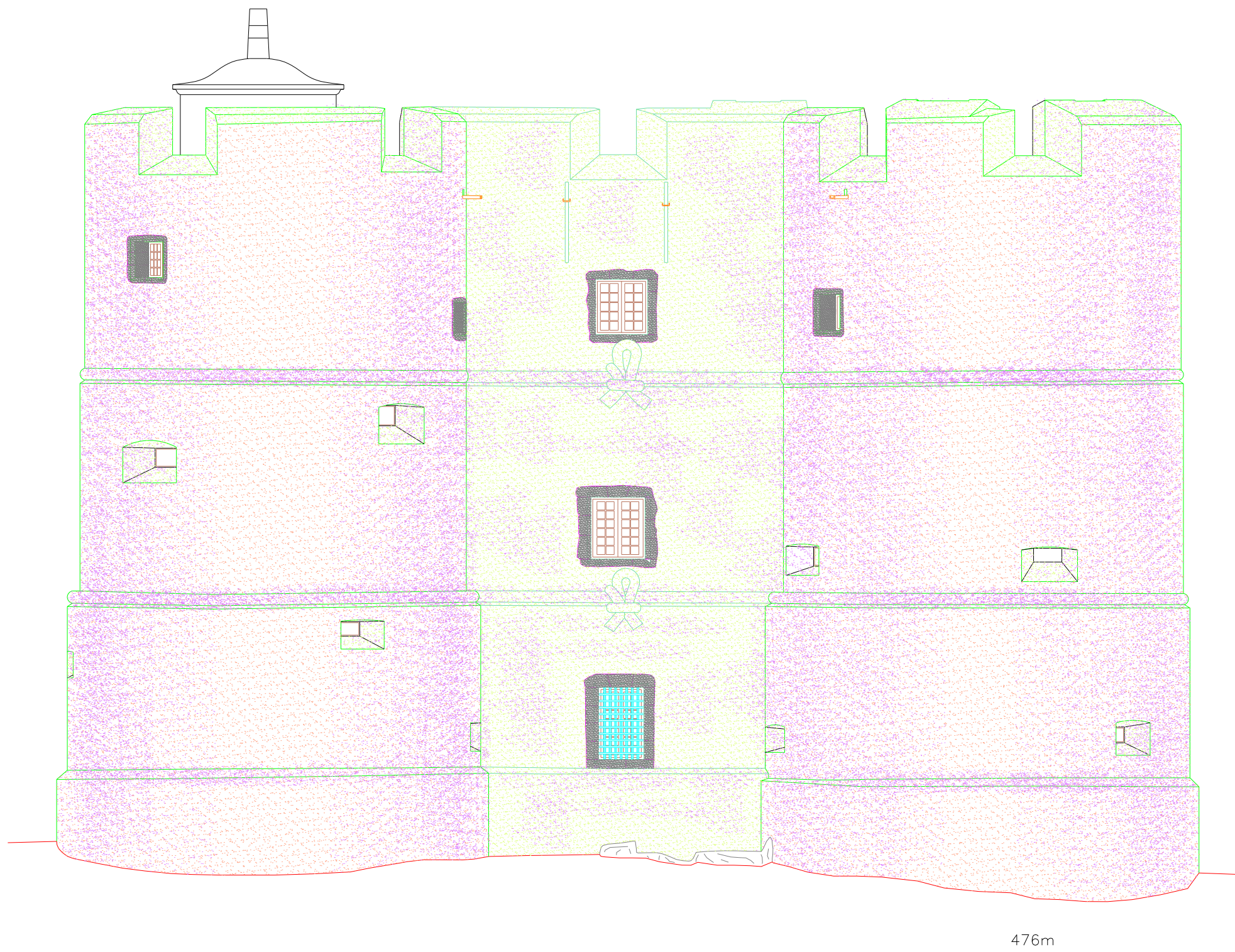
LEVANTAMENTO ARQUITECTÓNICO  
CASTELO DE ÉVORAMONTE

DESENHO: Nº: 15

ALÇADO NOR-ESTE

ABRIL 2002 E:1/75





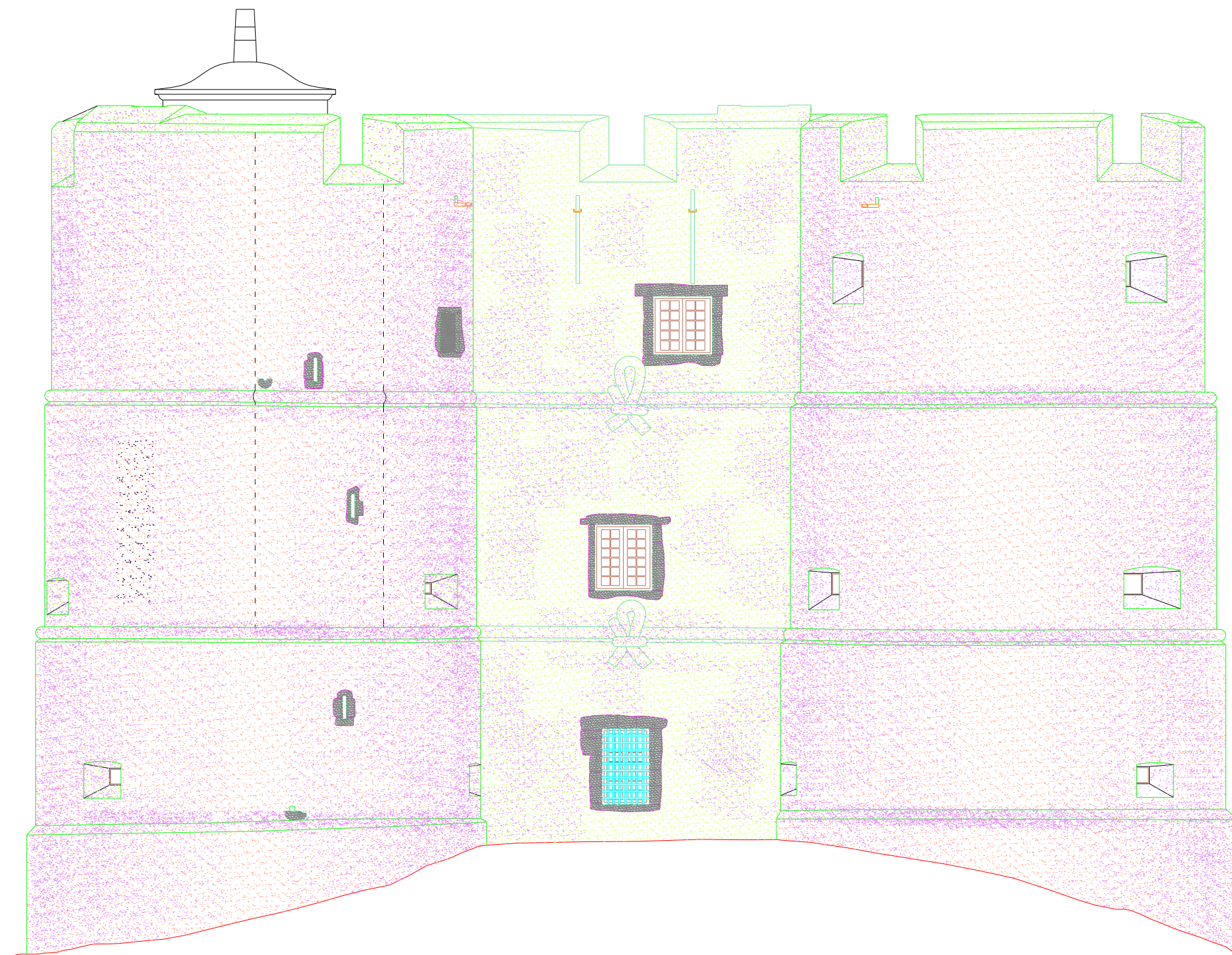
LEVANTAMENTO ARQUITECTÓNICO  
CASTELO DE ÉVORAMONTE

DESENHO: Nº: 16

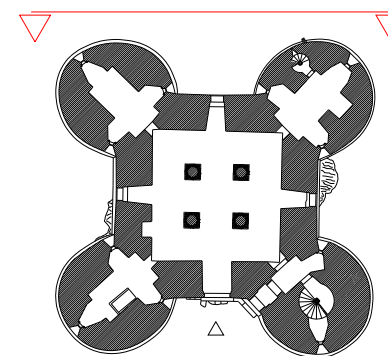
ALÇADO NOR-OESTE

ABRIL 2002 E:1/75





476m



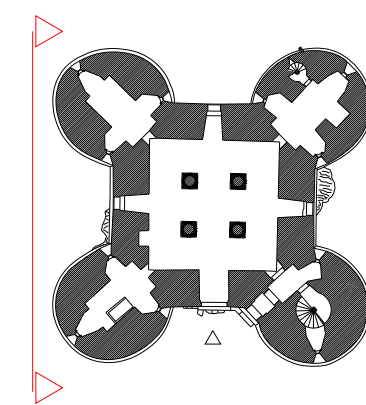
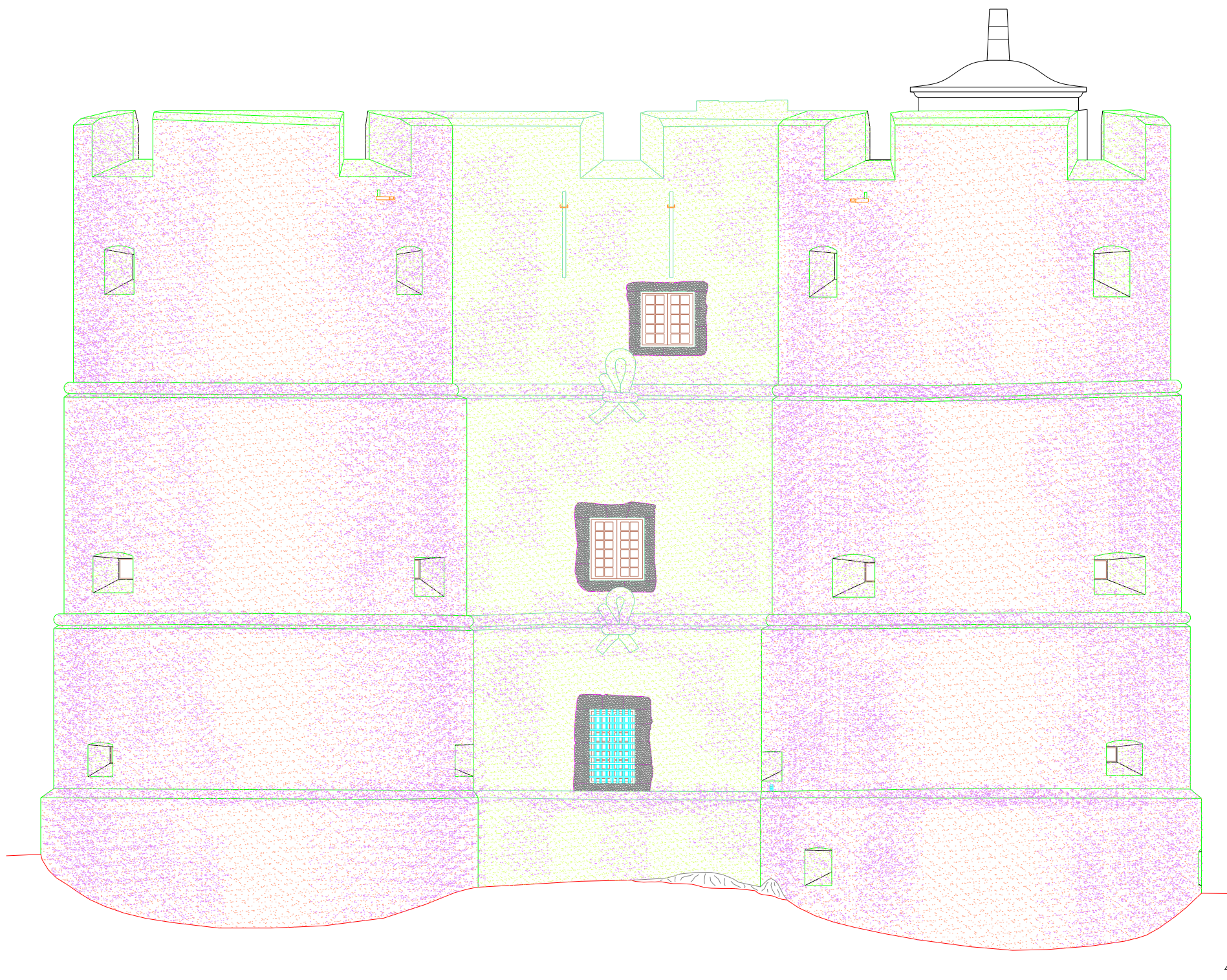
LEVANTAMENTO ARQUITECTÓNICO  
CASTELO DE ÉVORAMONTE

DESENHO: Nº: 17

ALÇADO SUL-OESTE

ABRIL 2002 E:1/75

0m 1 2 3 4 5m



LEVANTAMENTO ARQUITECTÓNICO  
 CASTELO DE ÉVORAMONTE

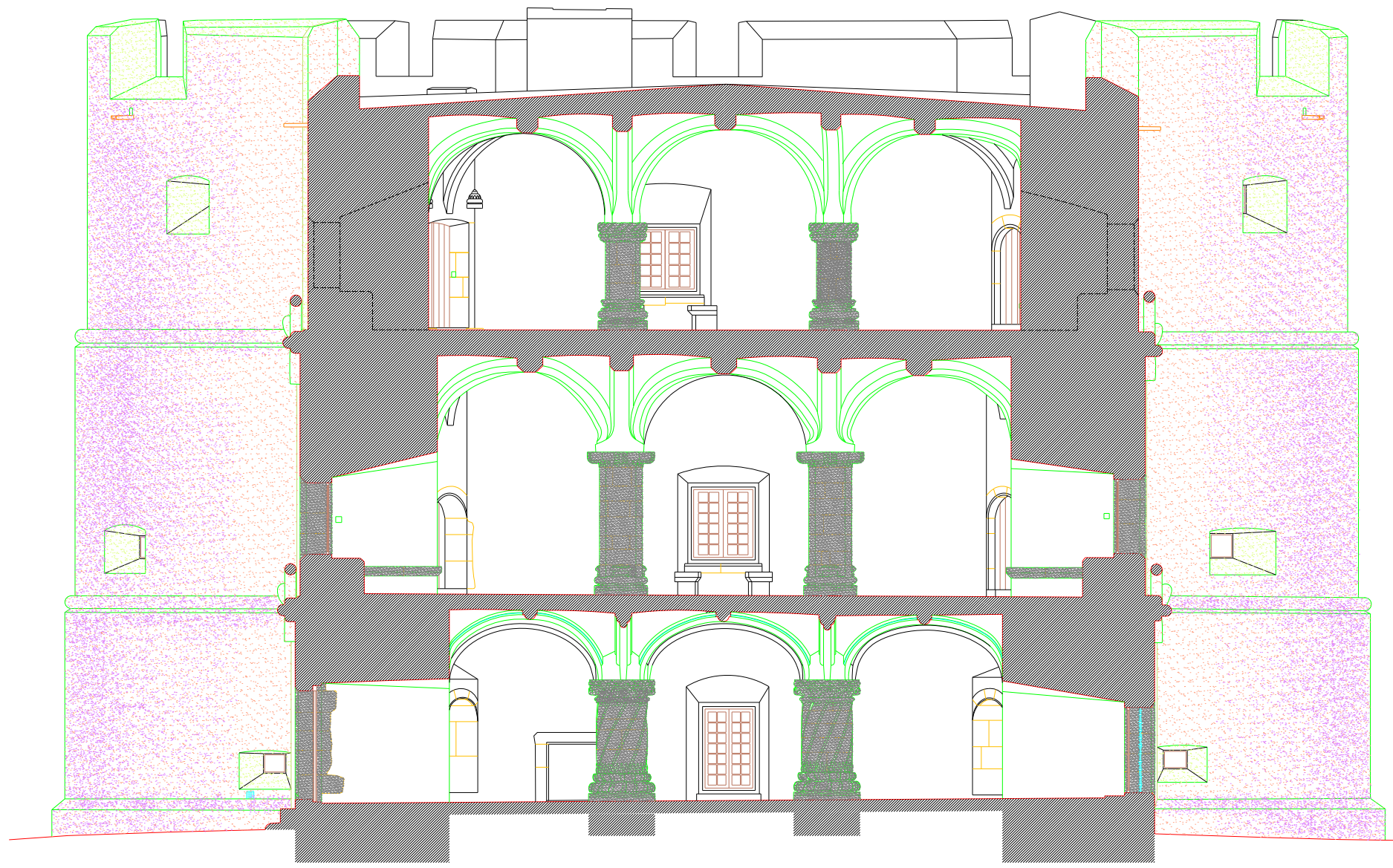
DESENHO: Nº: 18

ALÇADO SUL-ESTE

ABRIL 2002 E:1/75



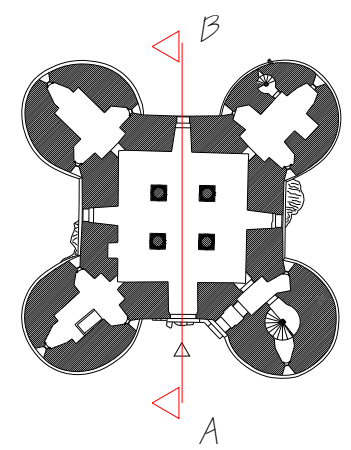
476m



A

B

476m

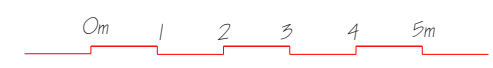


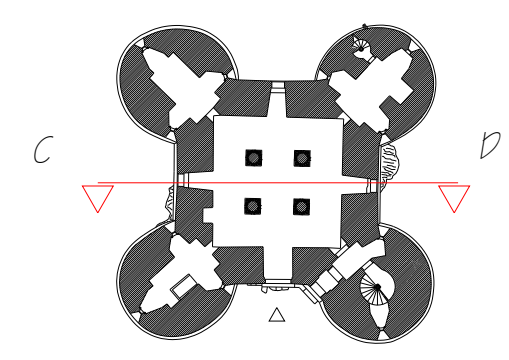
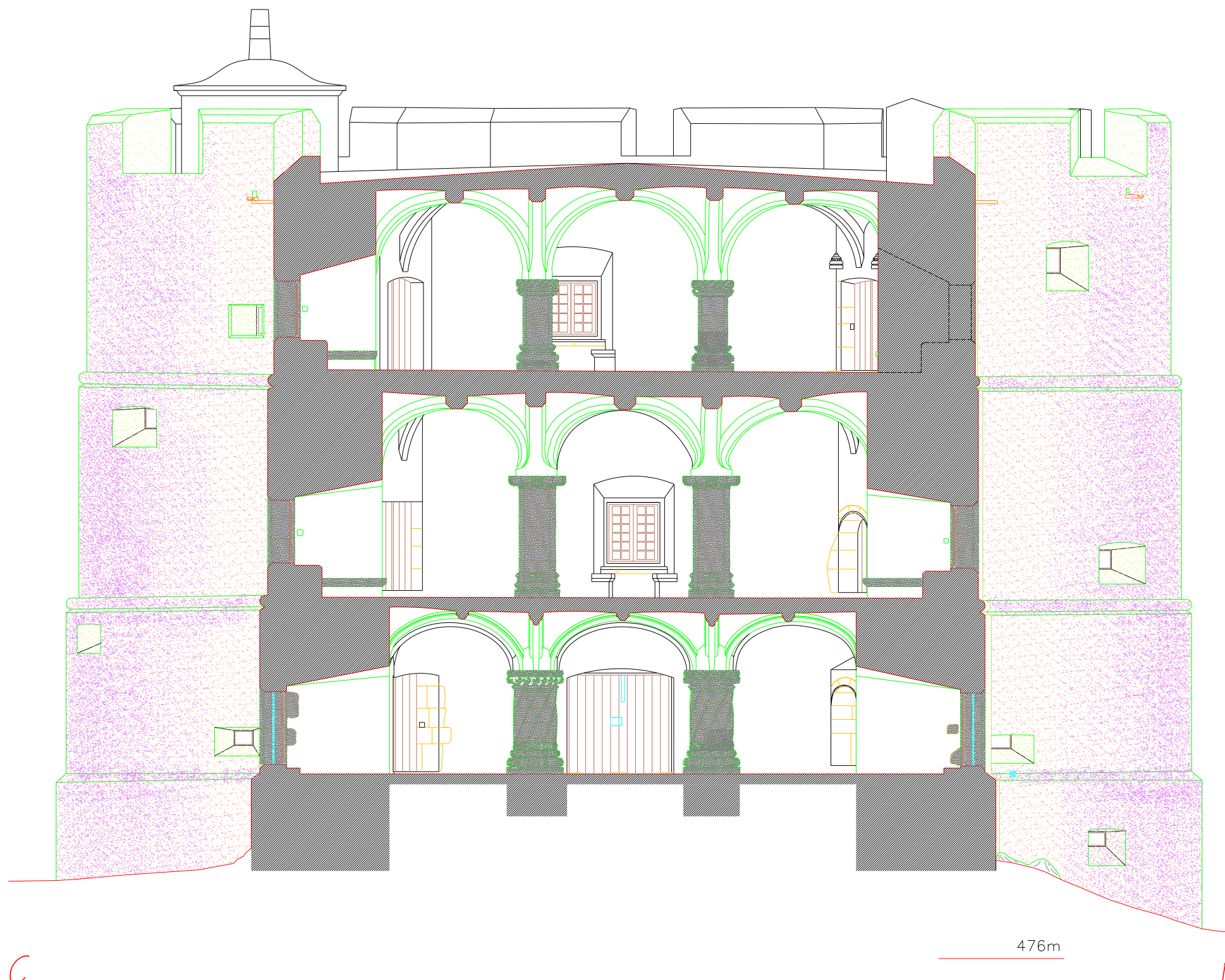
LEVANTAMENTO ARQUITECTÓNICO  
CASTELO DE ÉVORAMONTE

DESENHO: Nº: 19

CORTE A-B

ABRIL 2002 E:1/75





LEVANTAMENTO ARQUITECTÓNICO  
 CASTELO DE ÉVORAMONTE

DESENHO: Nº: 20

CORTE C-D

ABRIL 2002 E:1/75

