

Rua António Augusto Gonçalves

D.O. : IPPAR, Direcção Regional de Coimbra

Local : Mosteiro de Santa Clara-a-Velha, COIMBRA

Modificado em: 21-10-2002

Modificado por: Nuno Santos

Descrição : Pormenor do levantamento topográfico

Desenhos :

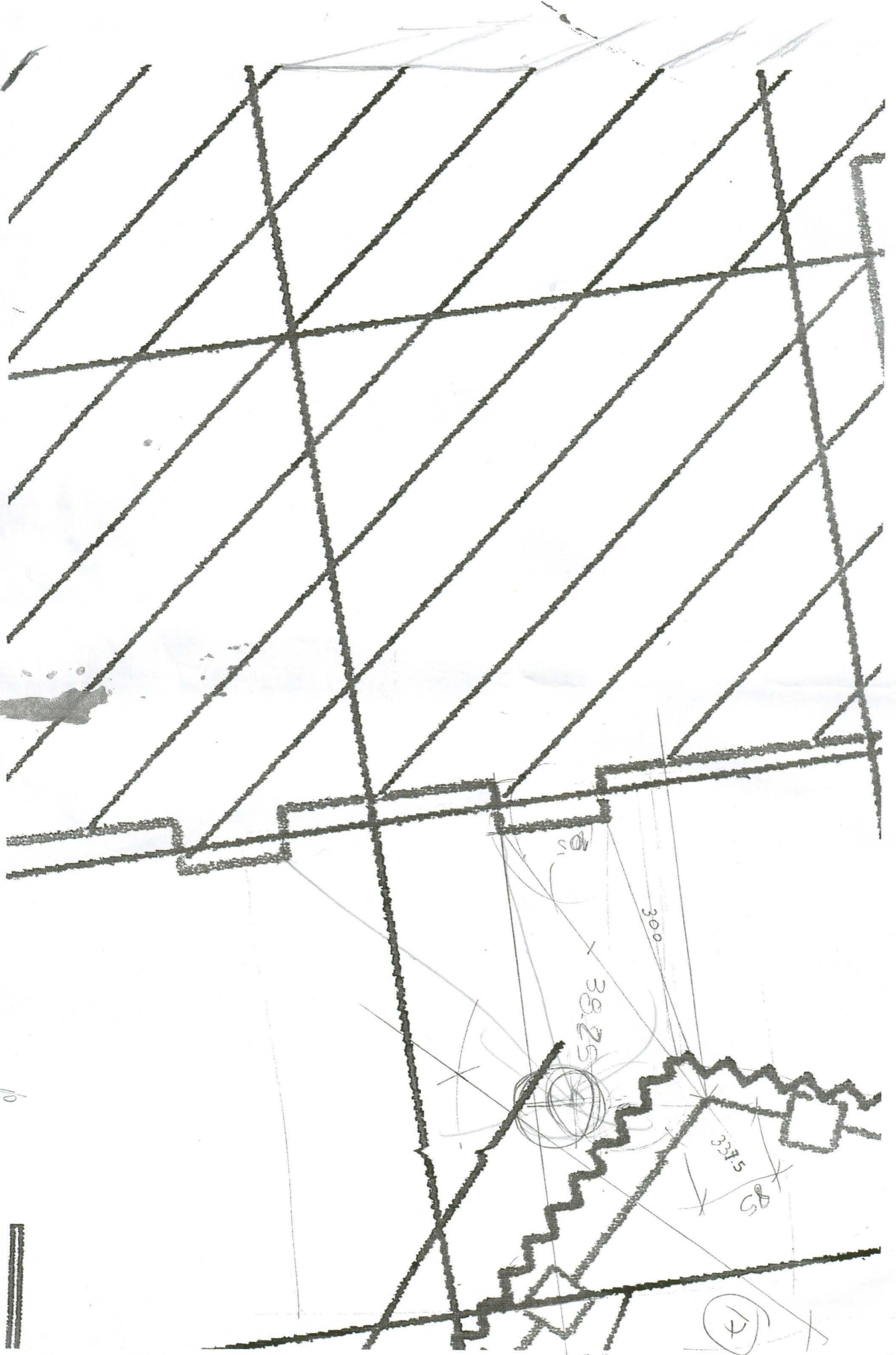
Levantamento Topográfico

Escala : 1/200

processo:

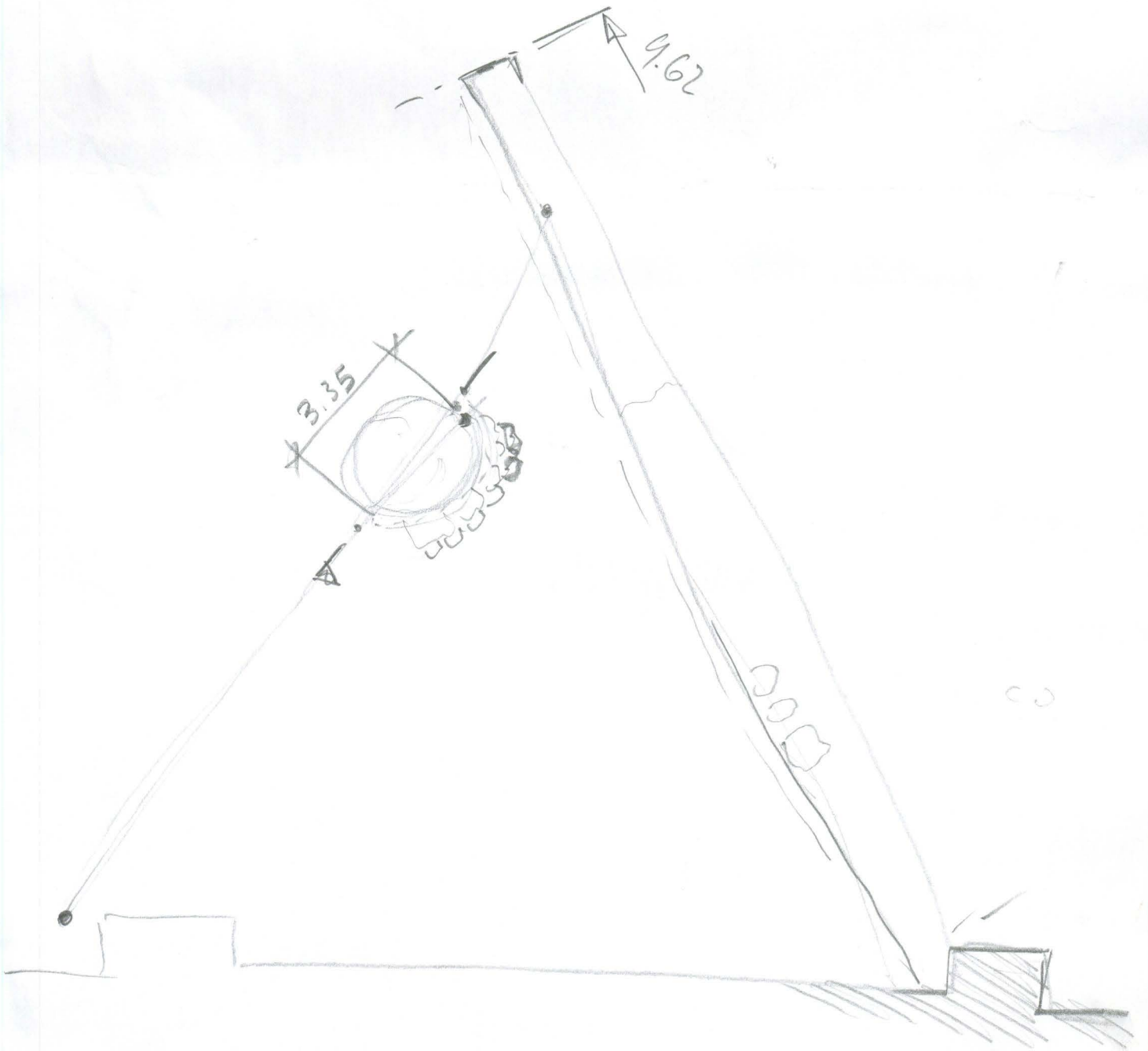
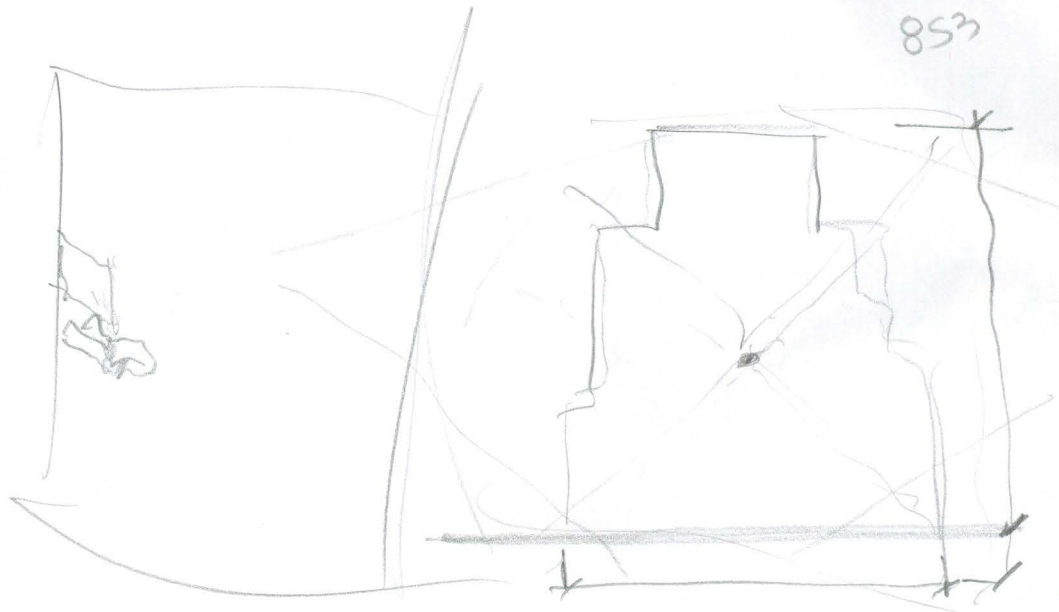
Folha n°

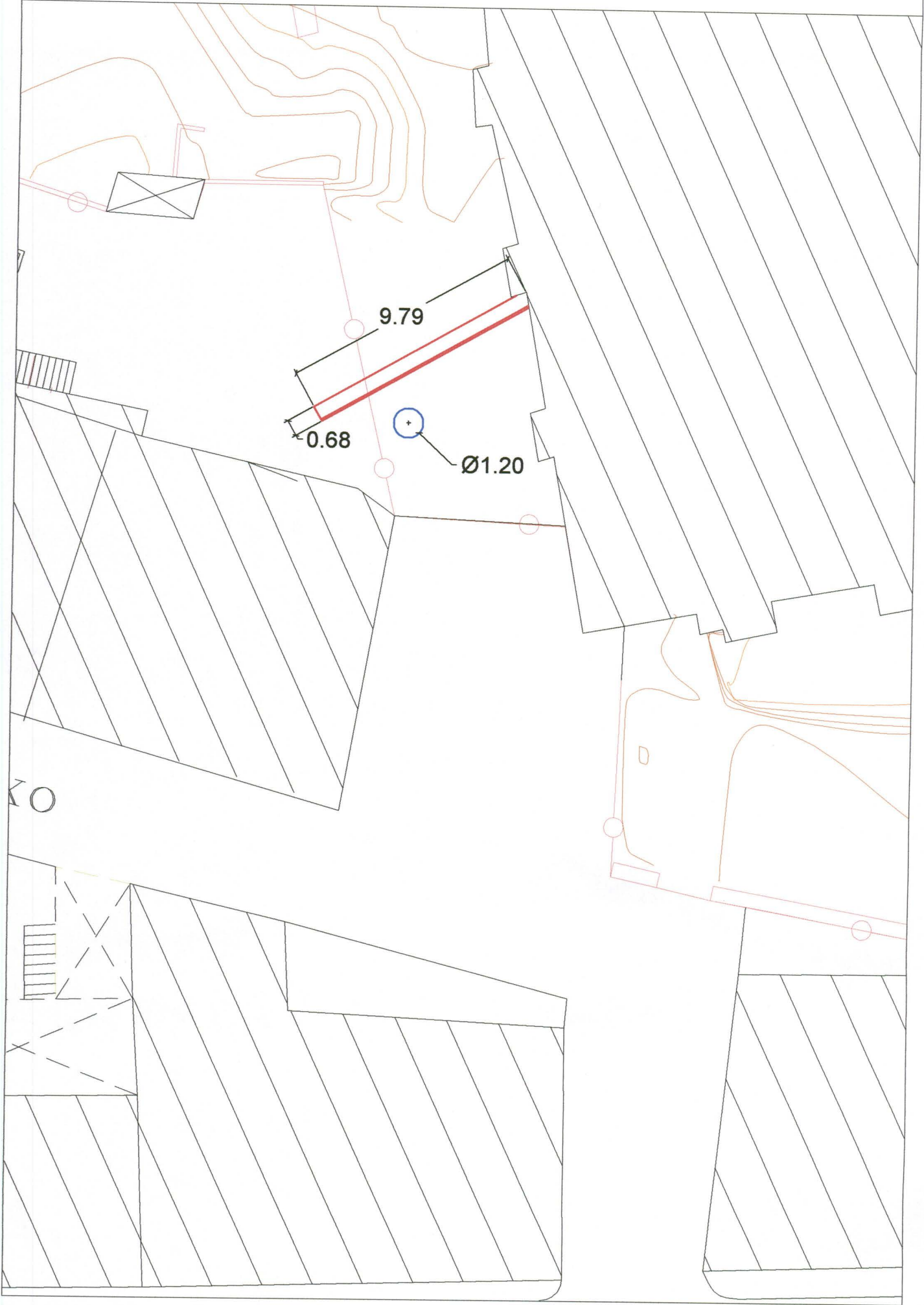
1



$\sqrt[100]{100}$   
 100  
 100

(14)



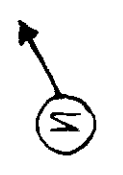
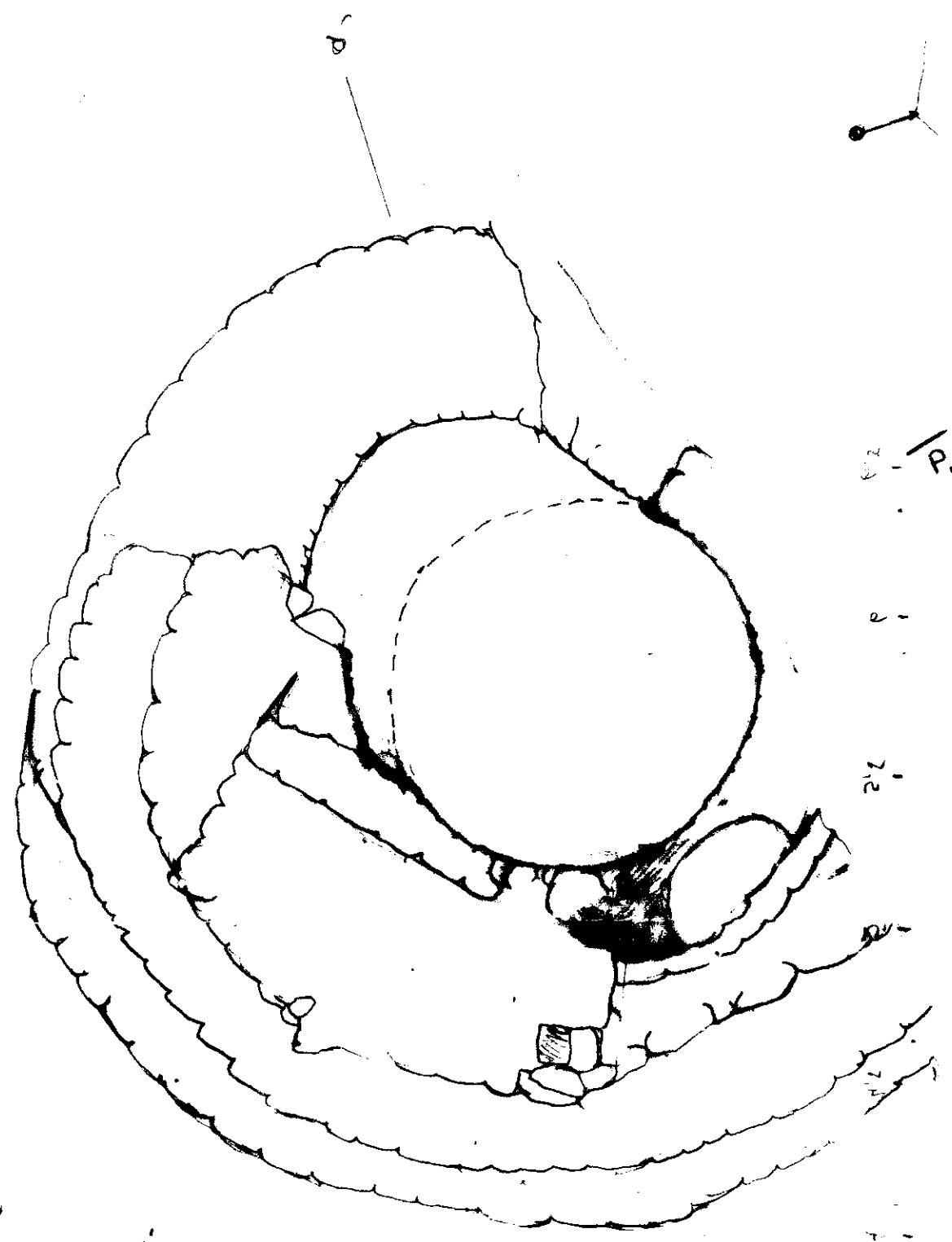


CORTE b-b'

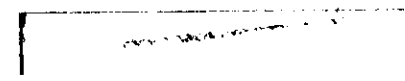




√P



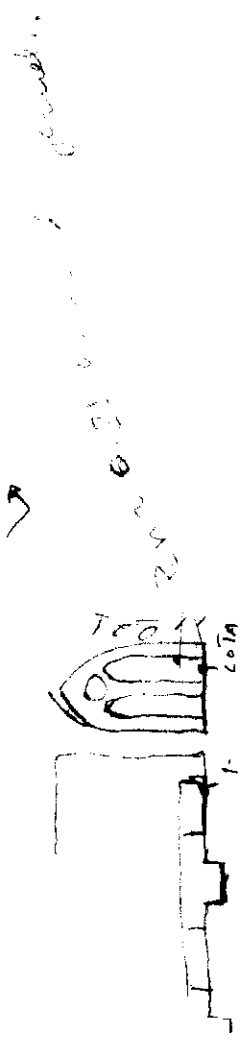
200  
100



218

CoTn - 0.21

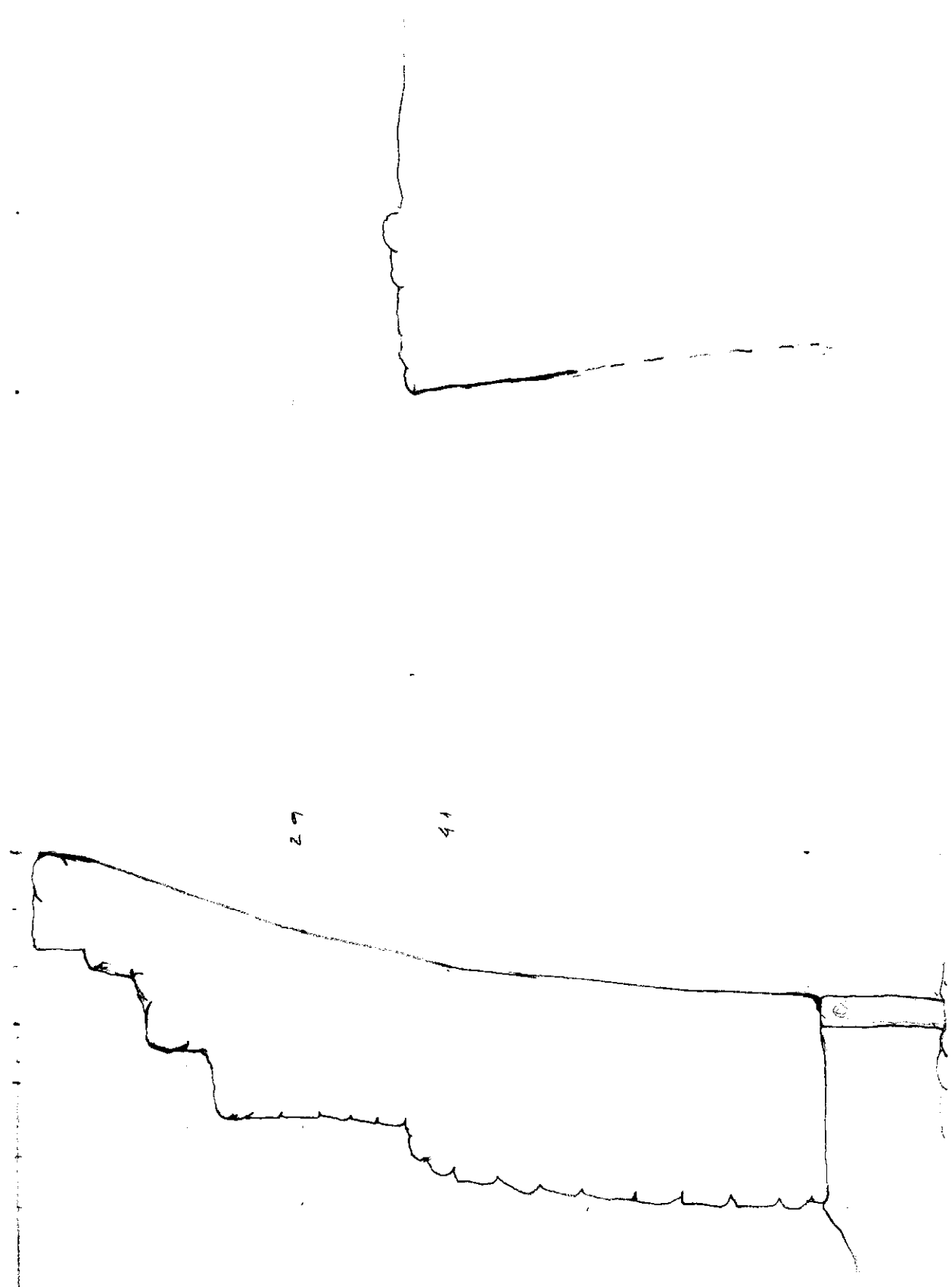
a a'



1:10

43

268



27

41