



PLANO GERAL (MACIOS ARBUSTIVOS)



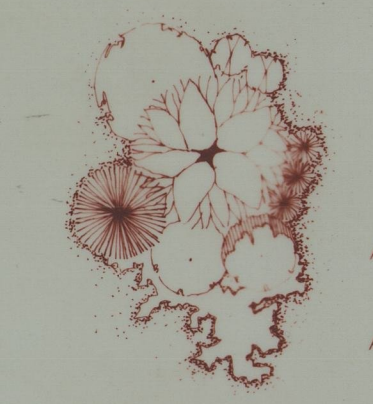
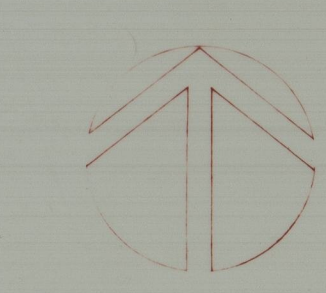
ARVORES  
ARBUSTOS

- 1 EDIFICIO PRINCIPAL/CASA DE RAMALDE
  - 2 CAPELA
  - 3 TORREAO/CASA DO GUARDA
  - 4 OFICINAS/ESCOLA
  - 5 ARMAZEM
  - 6 EDIFICIO ADMINISTRATIVO
  - 7 CASARIO A RECUPERAR
  - 8 NORA/POCO
- A: ACESSO PRINCIPAL  
A1: ACESSO SERVICOS ADMINISTRATIVOS  
A2: ACESSO ARMAZEM/OFFICINAS

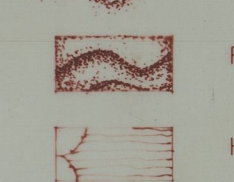


PLANO GERAL (MACIOS ARBOREOS/RELVADO)

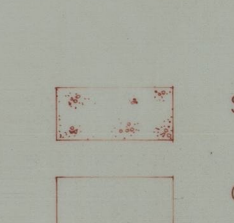
- A TERREIRO  
B ATRO DA CAPELA  
C JARDIM FORMAL/ROSEIRAL  
D JARDIM PARQUE  
E HORTA/POMAR  
F ALAMEDA  
G ESTACIONAMENTO



VEGETACAO  
ARVORES  
ARBUSTOS  
ORLA DE PROTECCAO E ENQUADRAMENTO



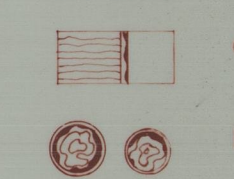
RELVADO  
HORTA/POMAR



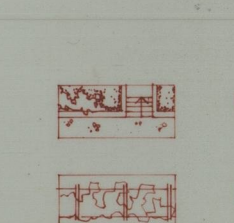
PAVIMENTOS  
SABRO  
CALCADA A PORTUGUESA



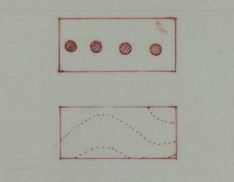
A AGUA  
TANQUE DE REGA  
CALERA



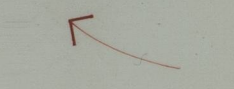
FONTES



OUTROS ELEMENTOS  
MUROS E ESCADAS  
RAMADA



MECOS DE GRANITO  
CURVAS DE NIVEL



ACESSOS

IPPC CASA DE RAMALDE - PORTO			
ARRANJOS EXTERIORES	ANTE-PROJECTO	1989	dez
PROPOSTA / PLANO GERAL		ESC. 1:500	DEZ. 1989

448-1h

es. 45 72 77  
10/10