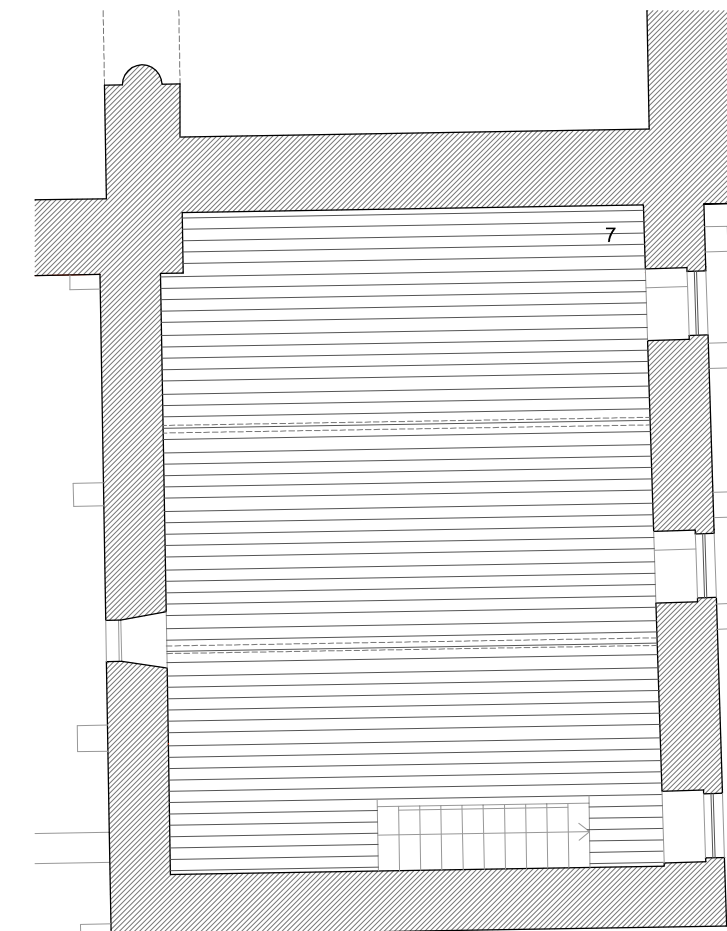
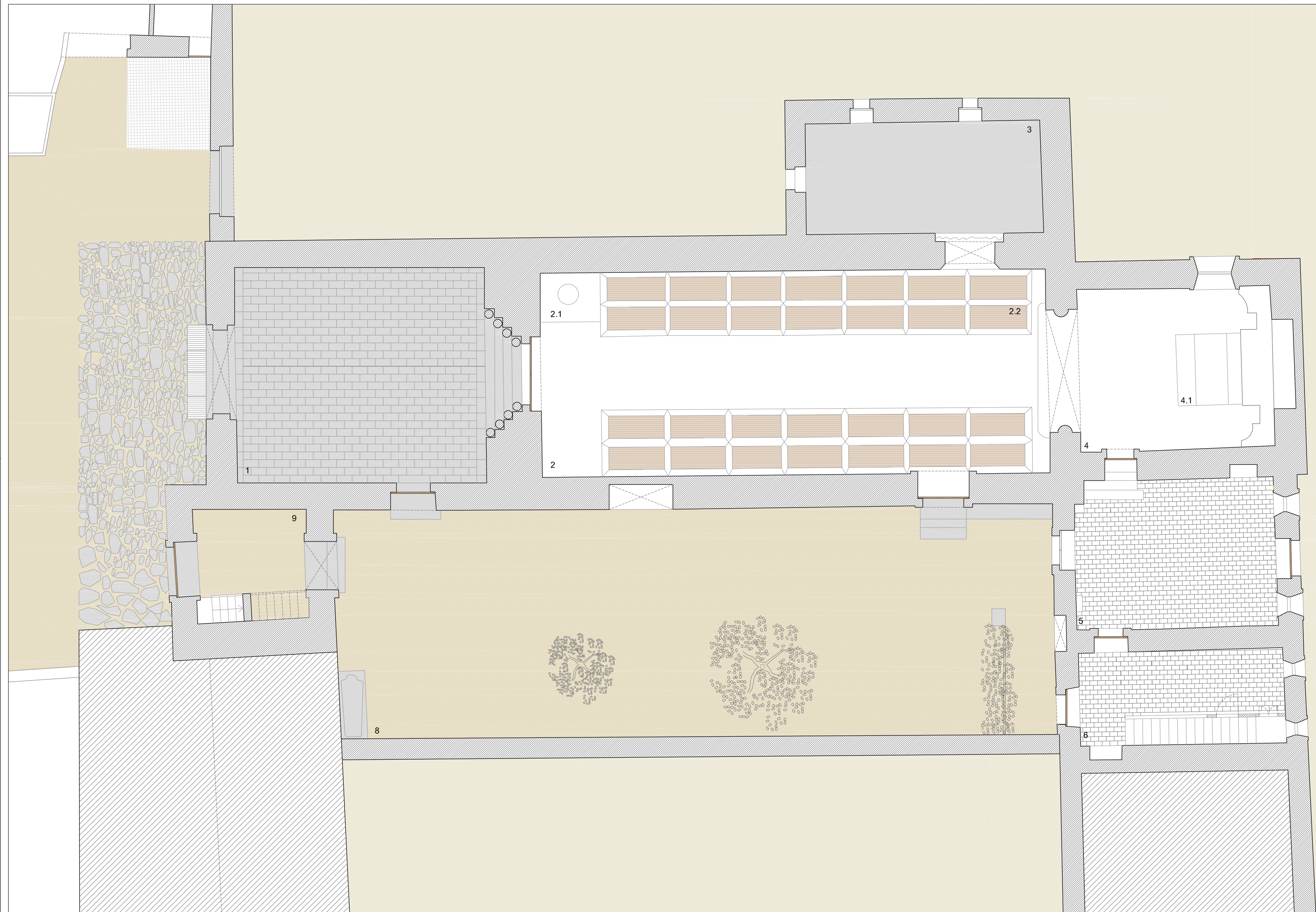


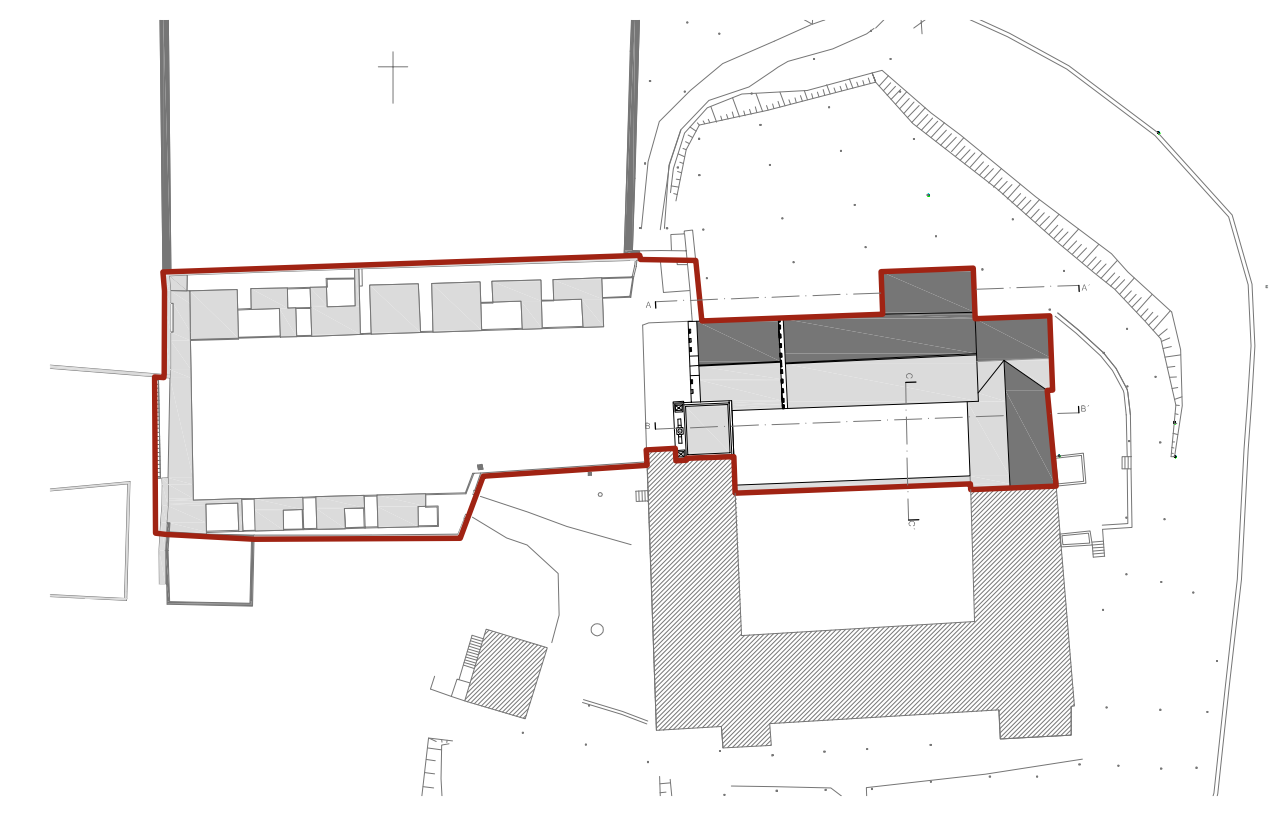
— Zona de intervenção



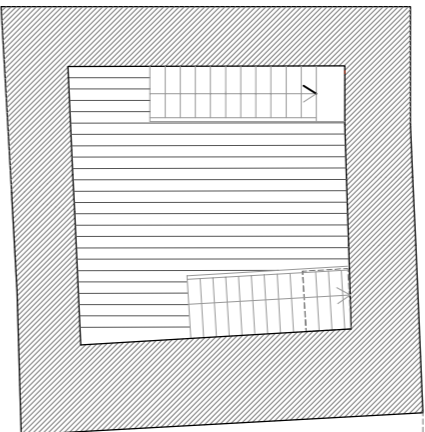
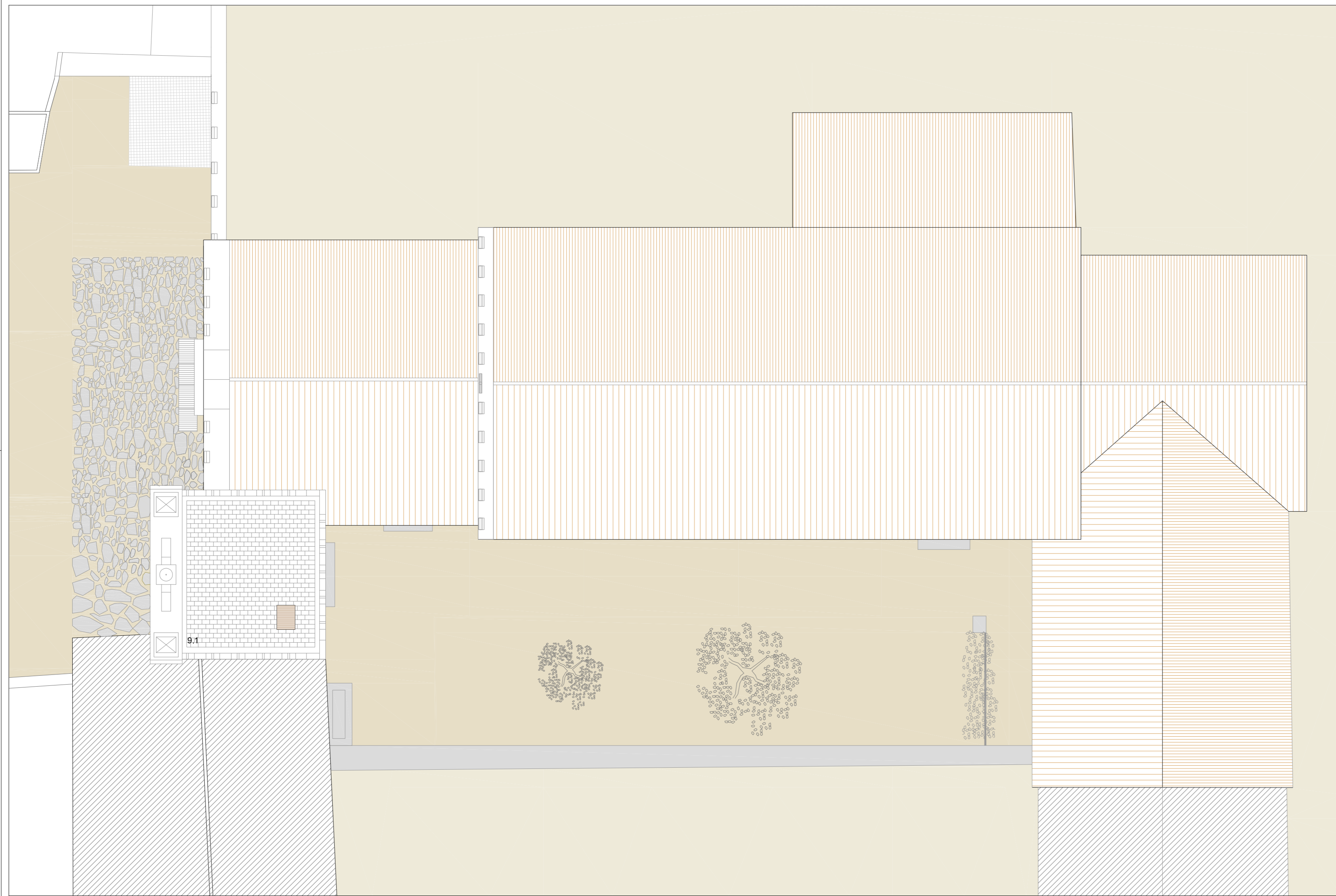
Legenda



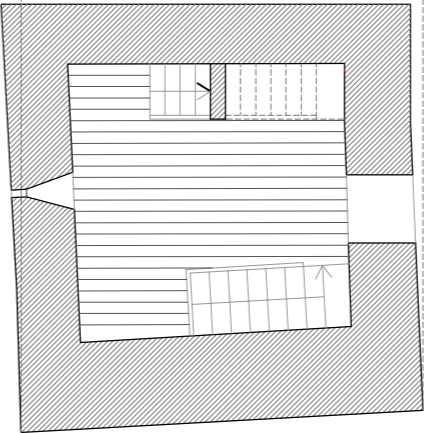
- 1. Galié
- 2. Nave
- 2.1. Pia Baptismal
- 2.2. Sepulturas
- 3. Anexo à nave
- 4. Capela-Mor
- 4.1. Altar e Retábulo
- 5. Sacristia
- 6. Arrumos e acesso piso superior
- 7. Sala de catequese
- 8. Espaço do antigo claustro
- 9. Planta baixa da torre



— Zona de intervenção Planta de implantação Esc. 1/750

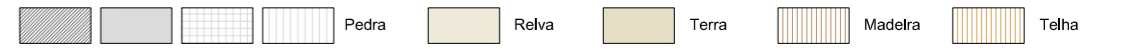


Planta 2

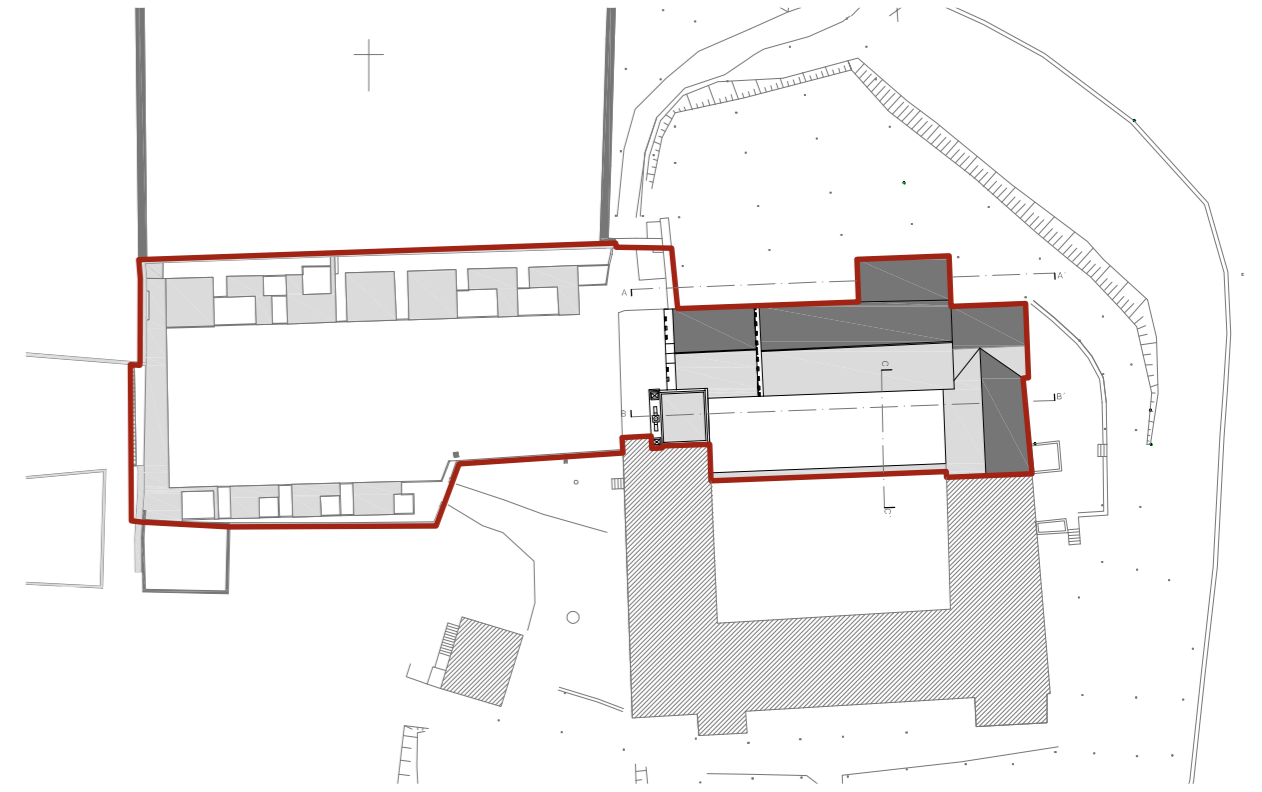


Planta 1

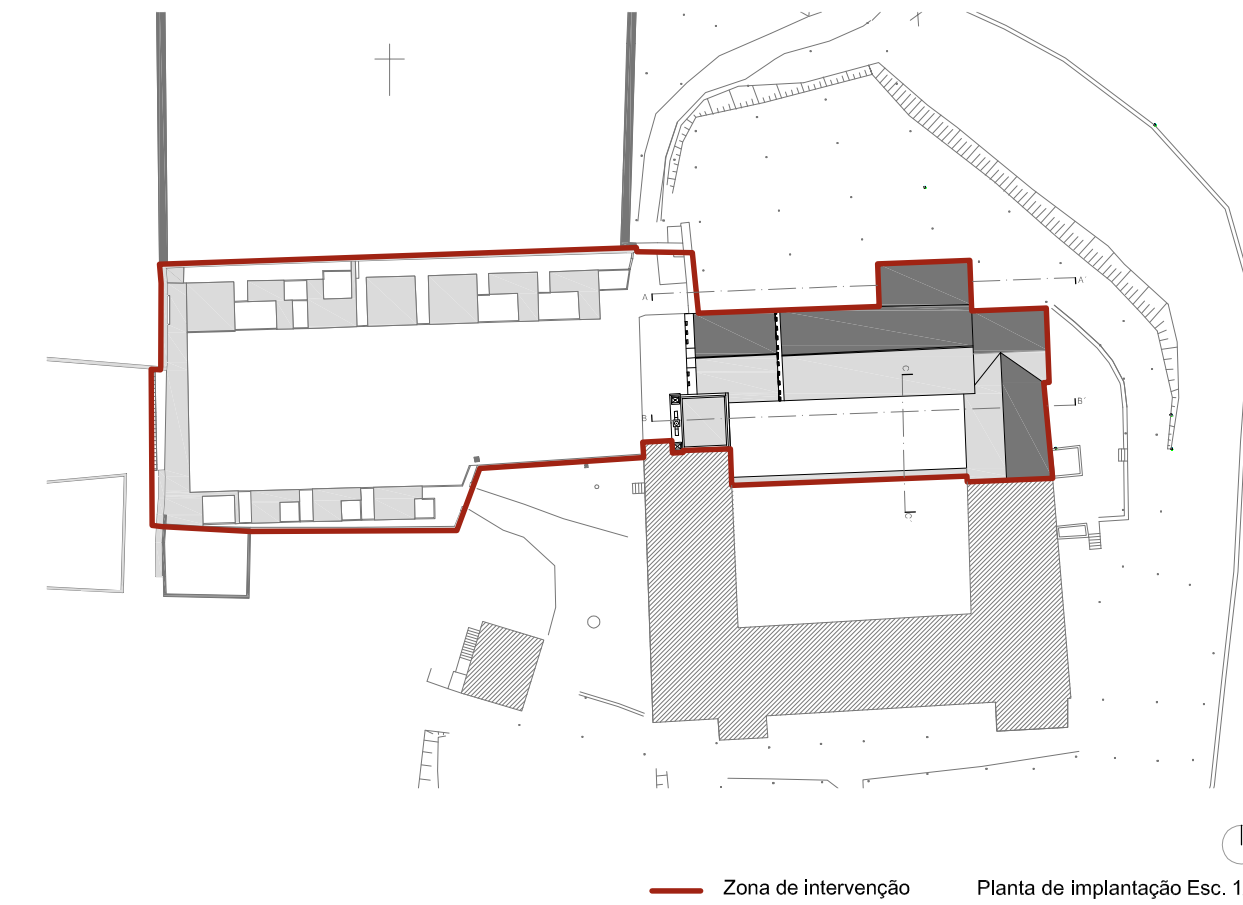
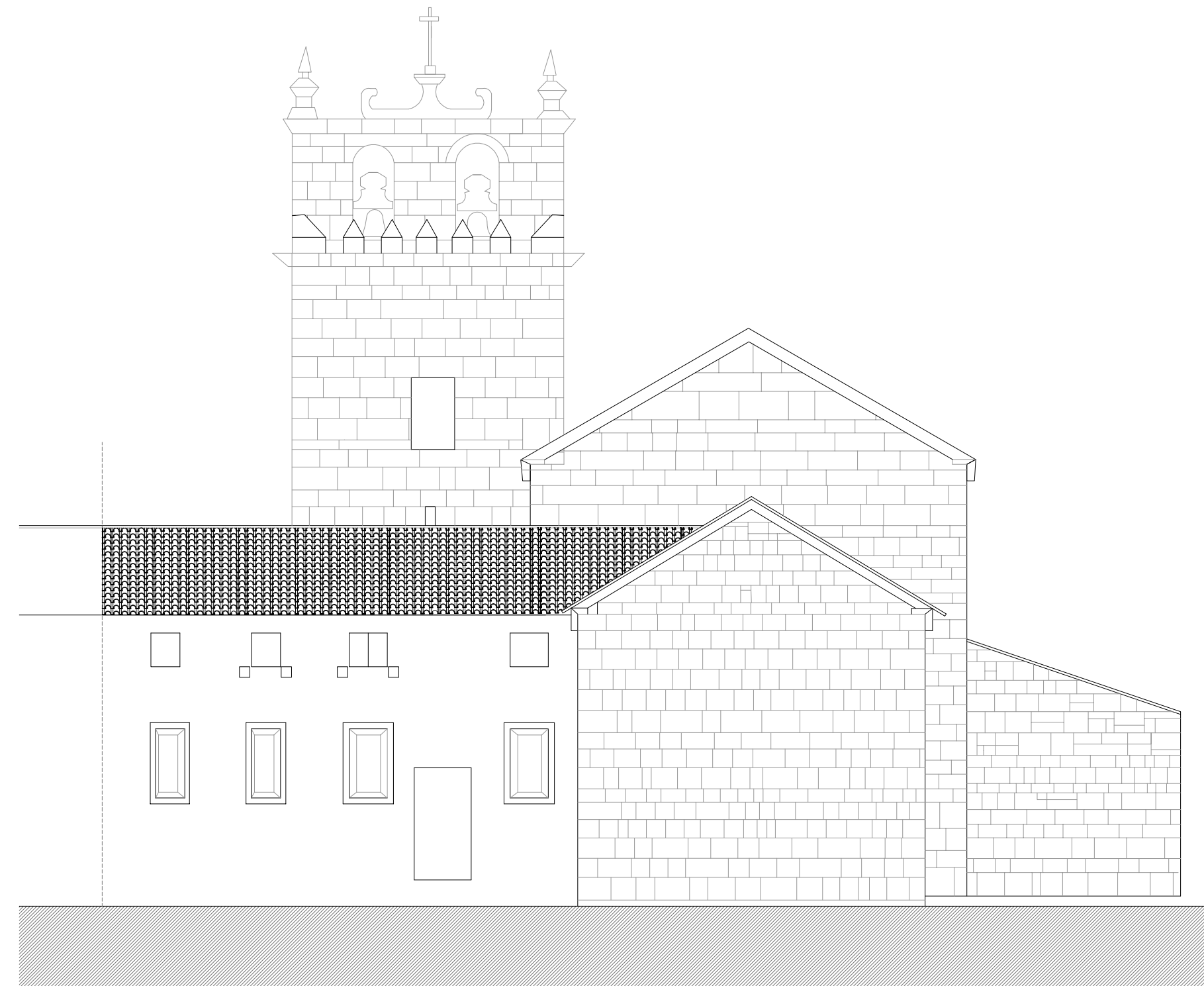
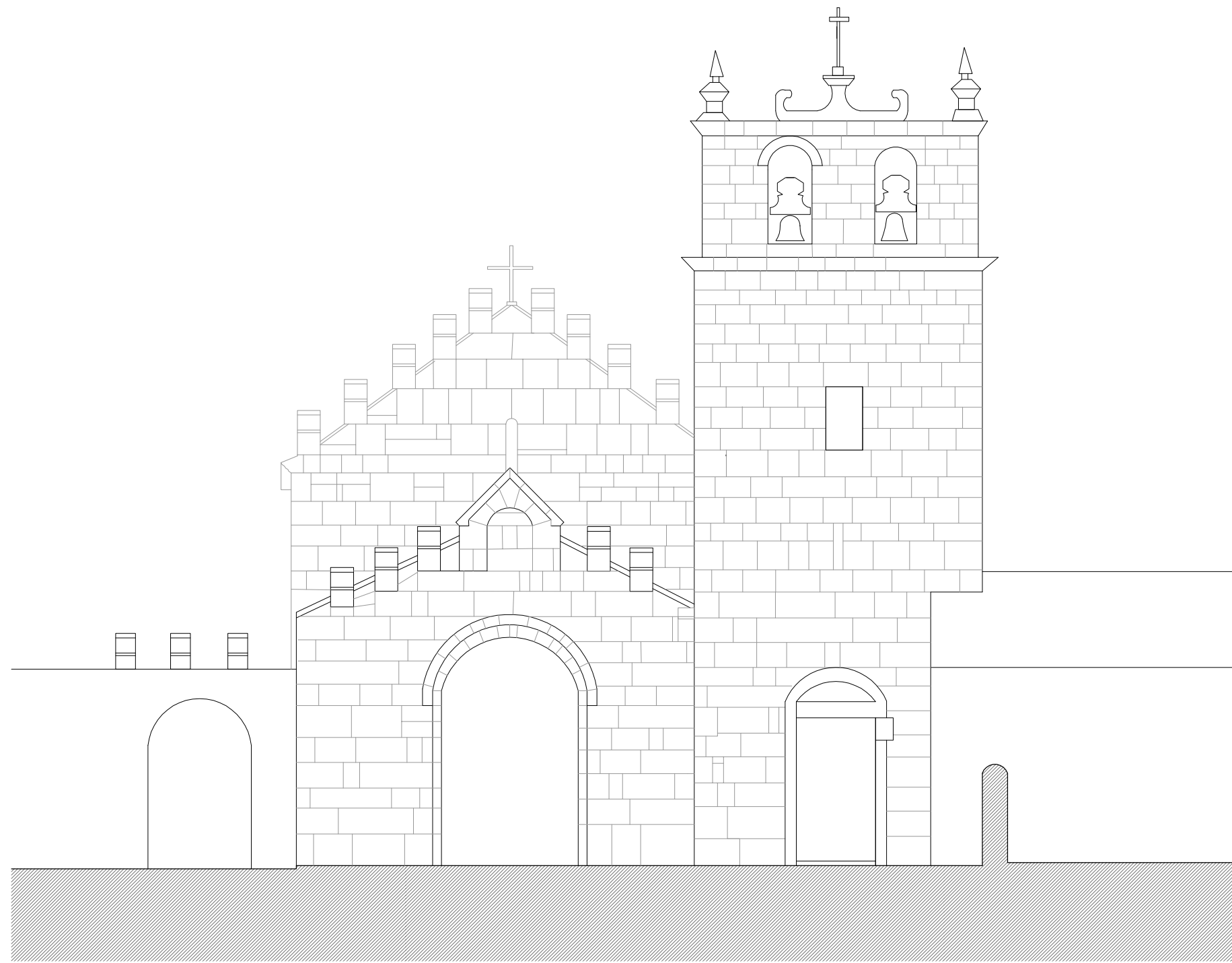
Legenda



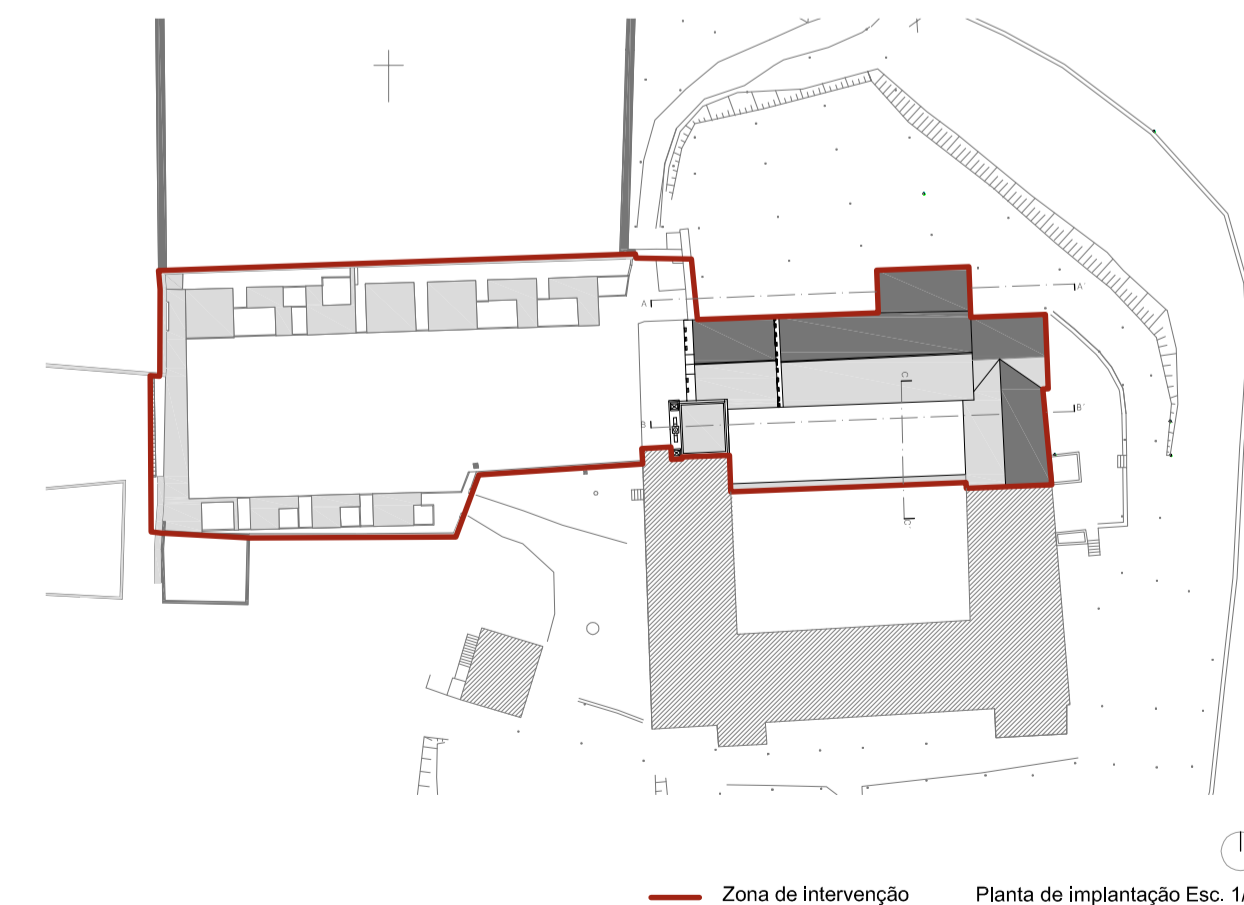
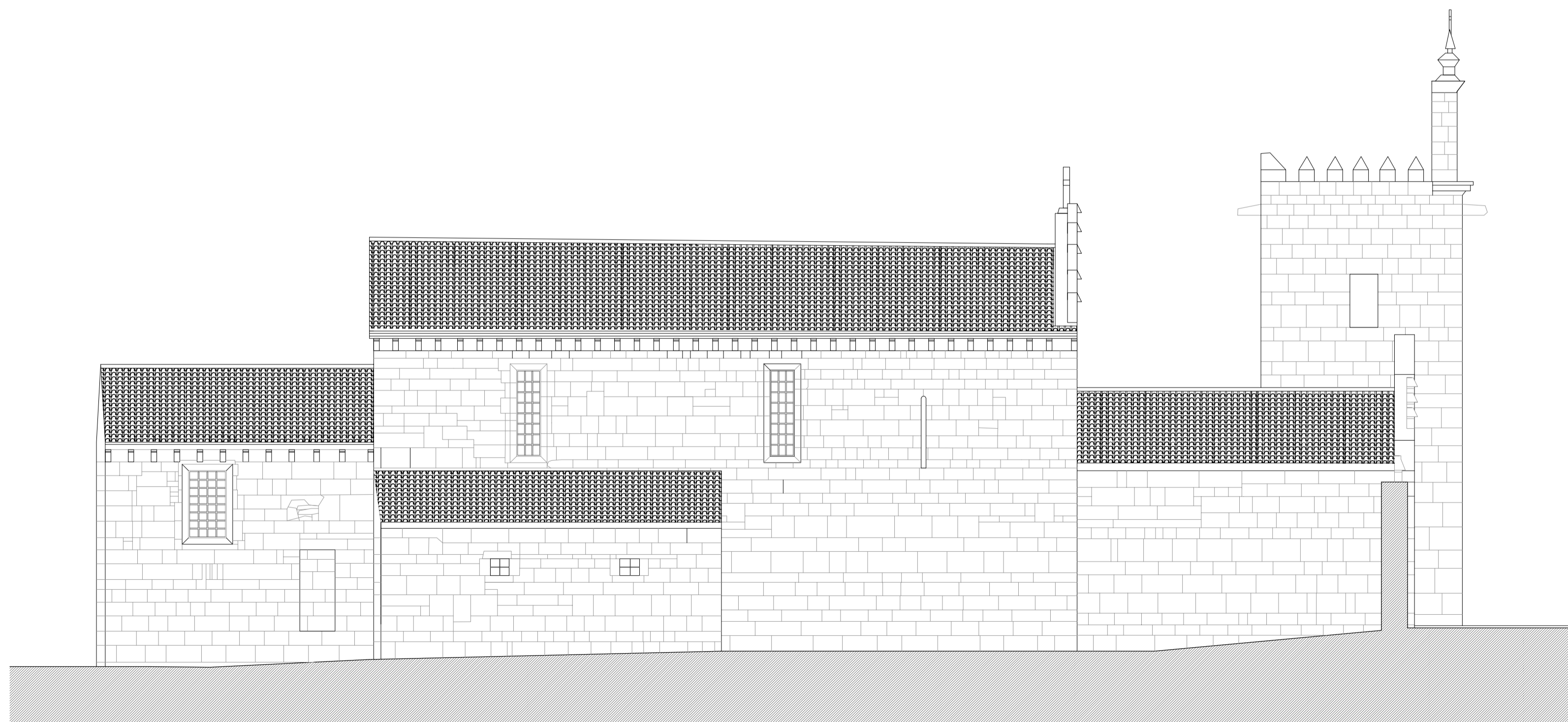
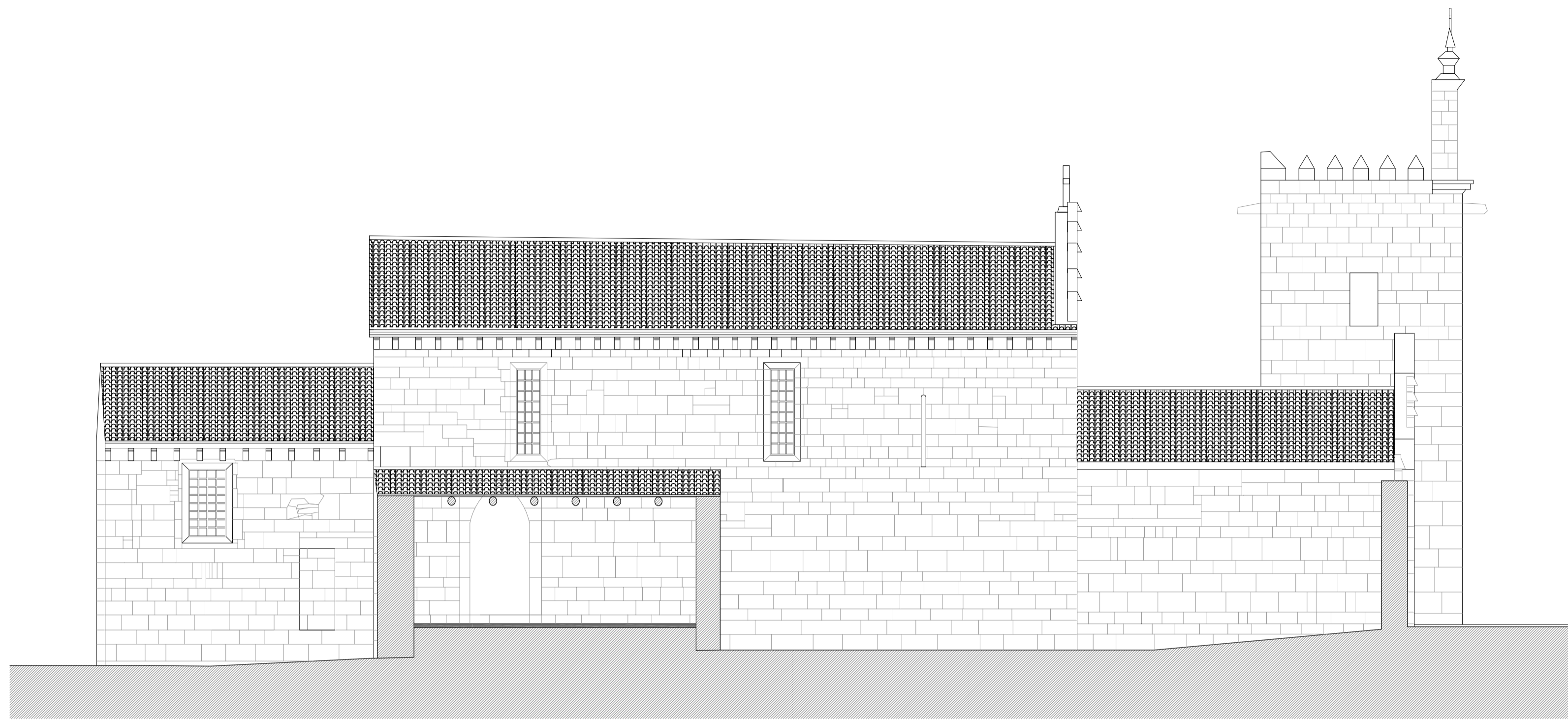
9.1. Cobertura acessível da torre



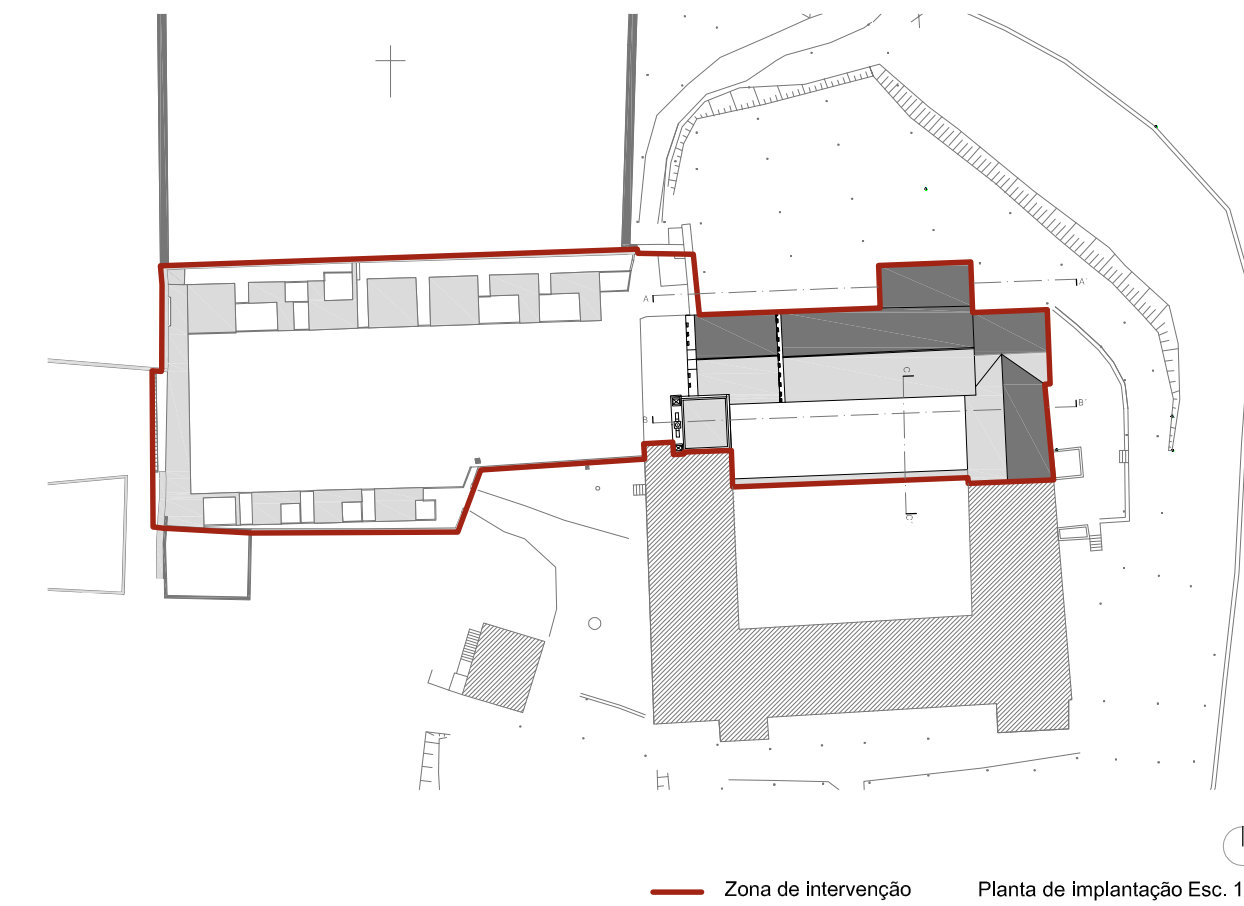
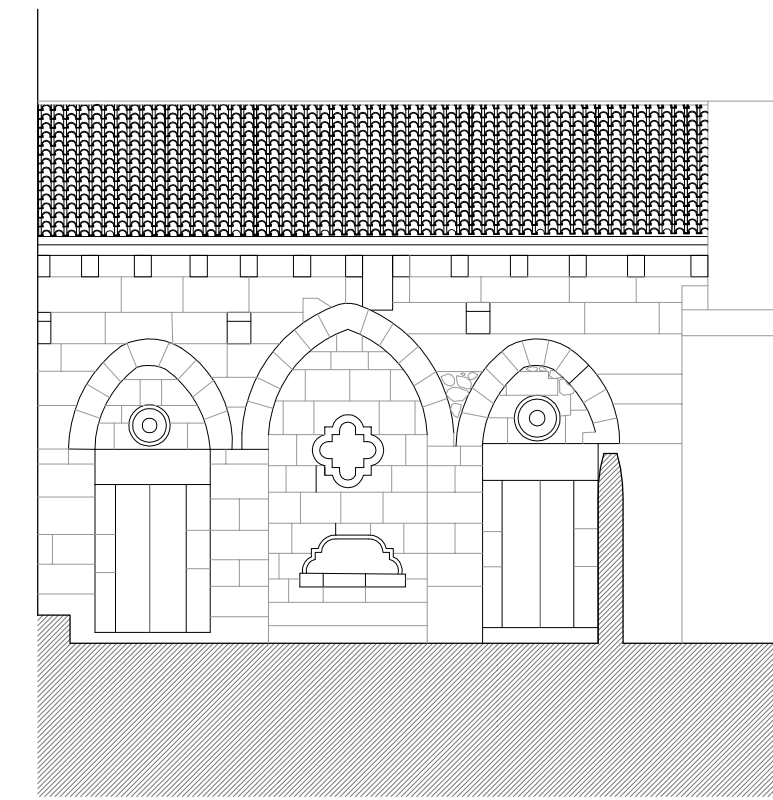
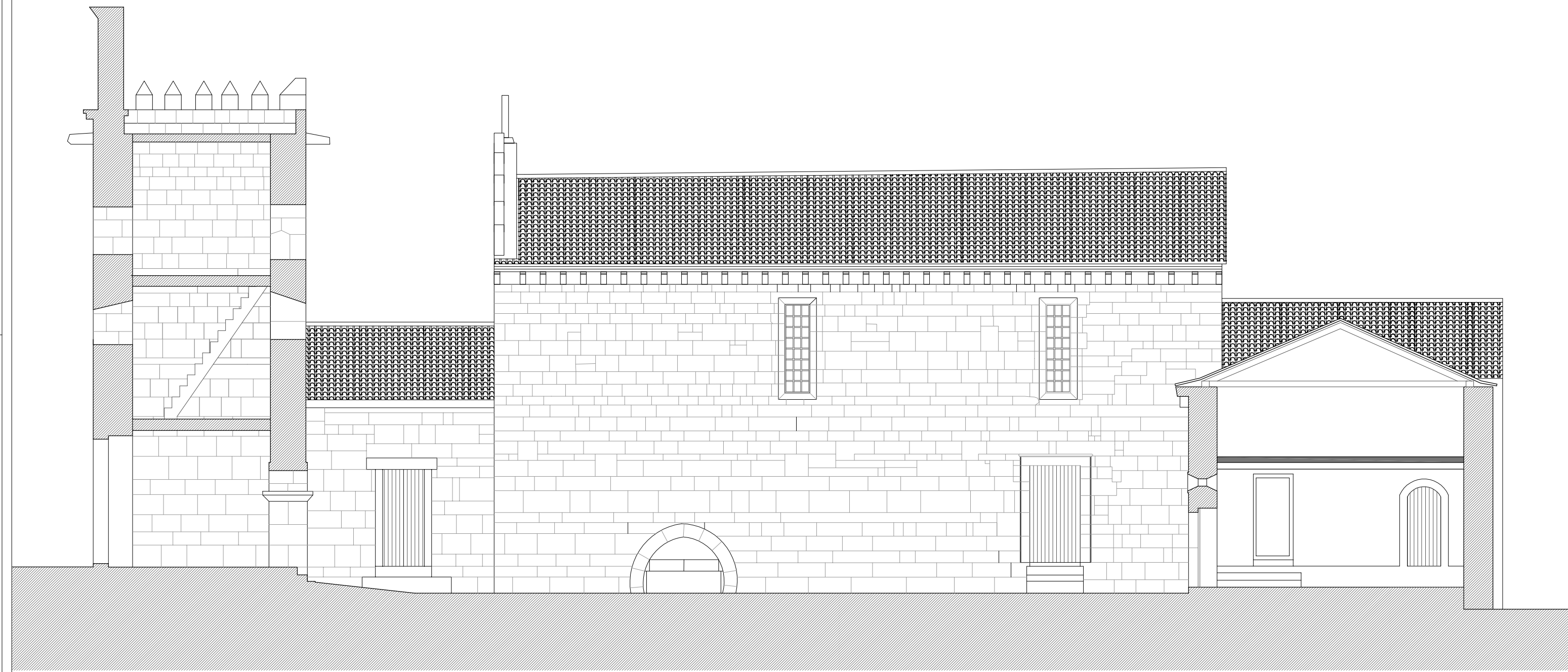
Zona de intervenção Planta de implantação Esc. 1/750

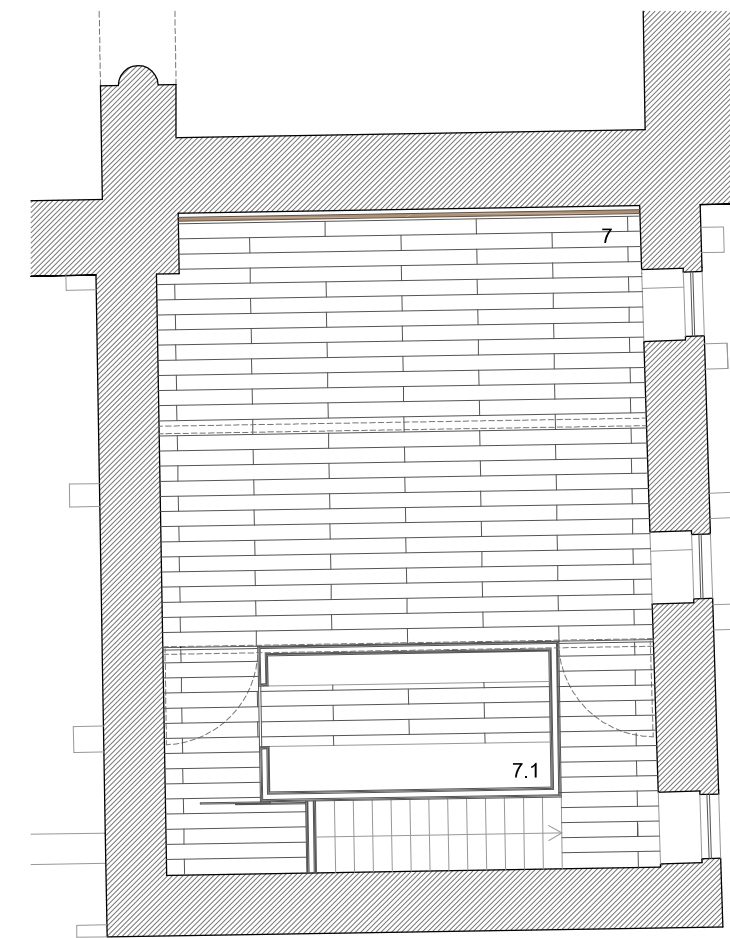
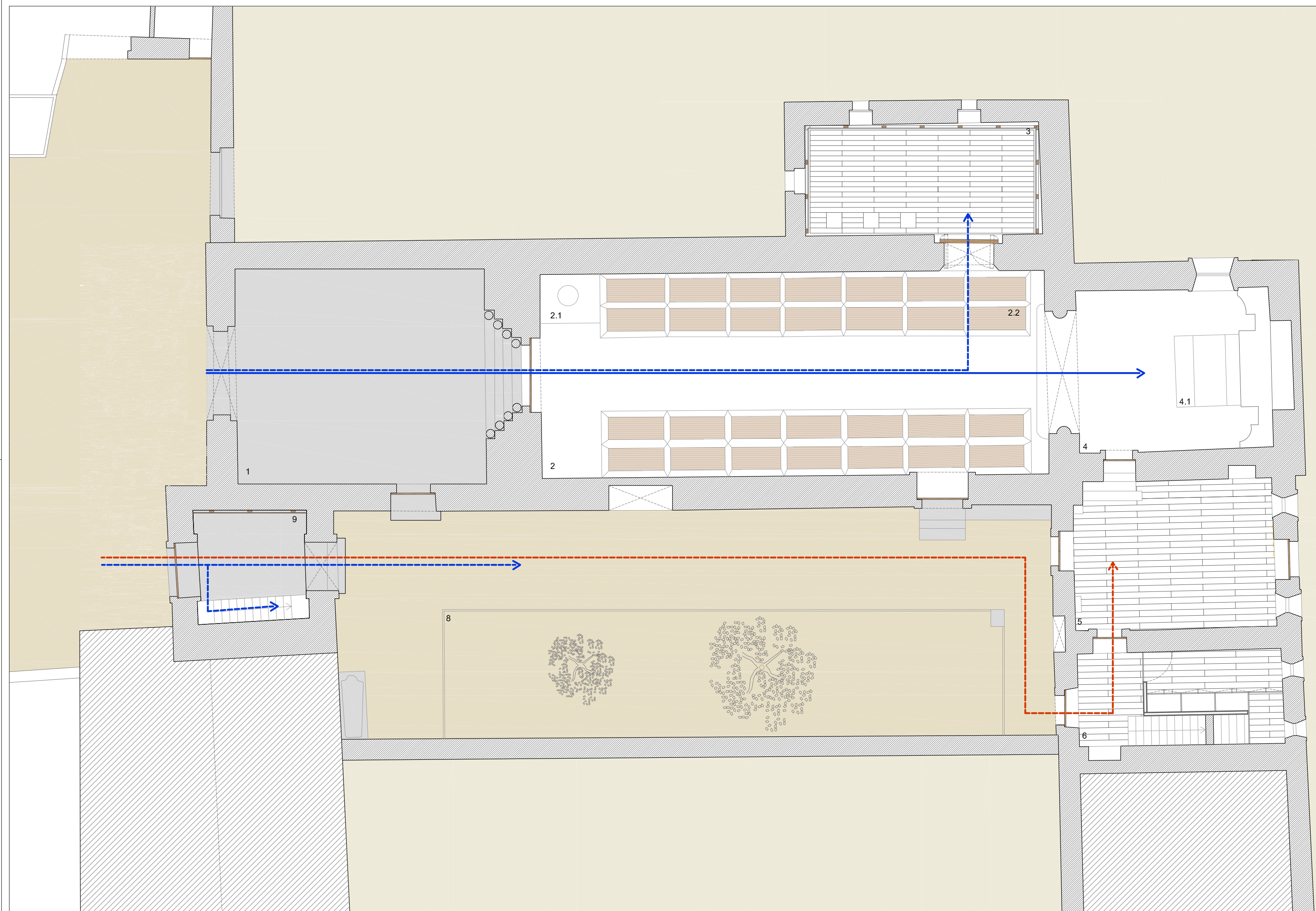


— Zona de intervenção Planta de implantação Esc. 1/750

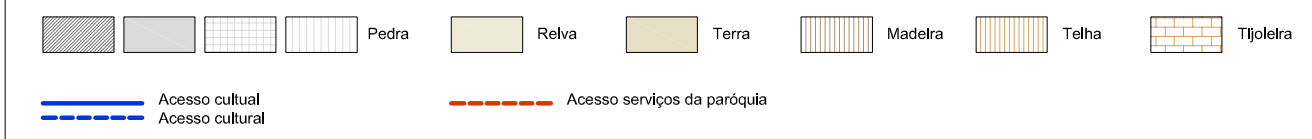


— Zona de Intervenção Planta de implantação Esc. 1/750

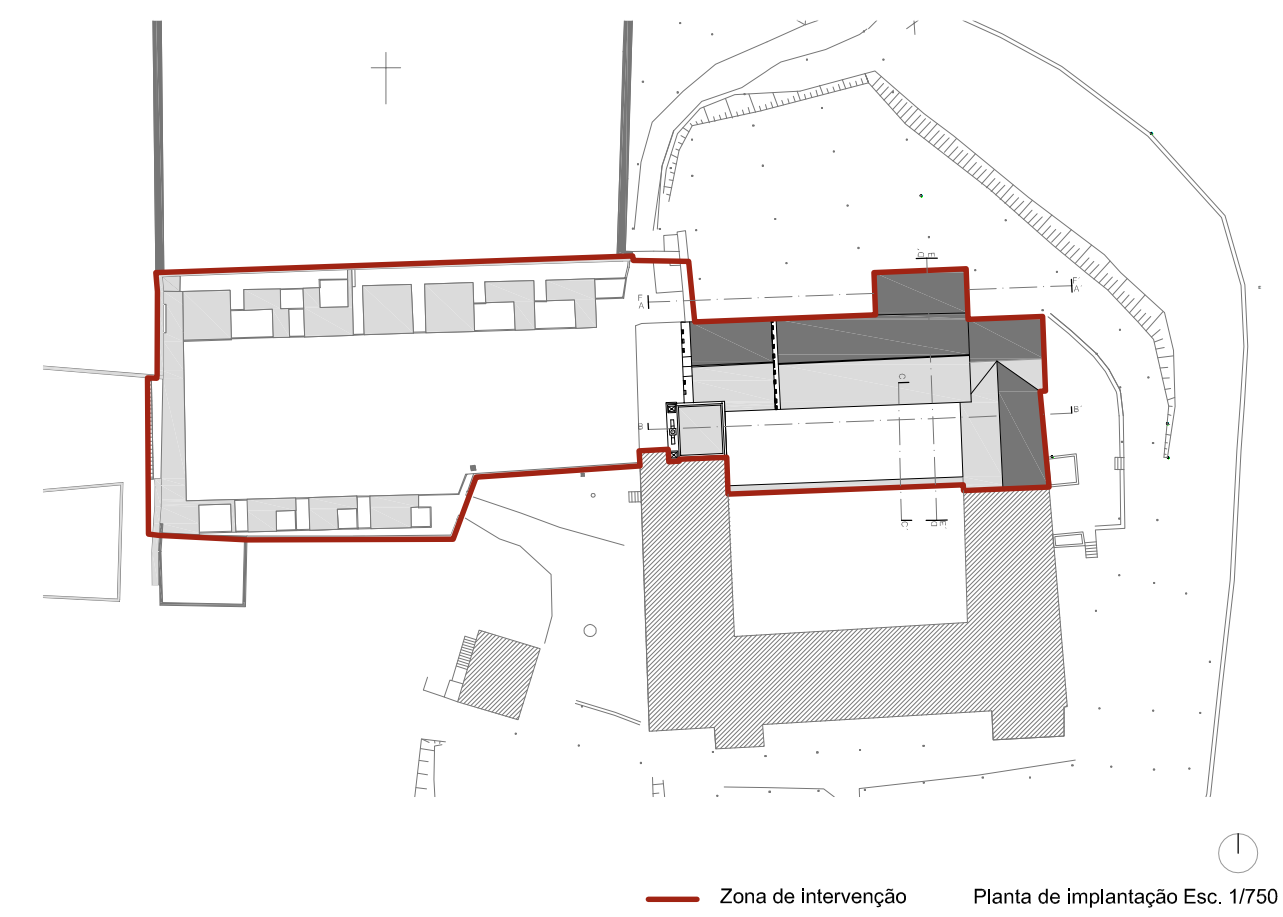


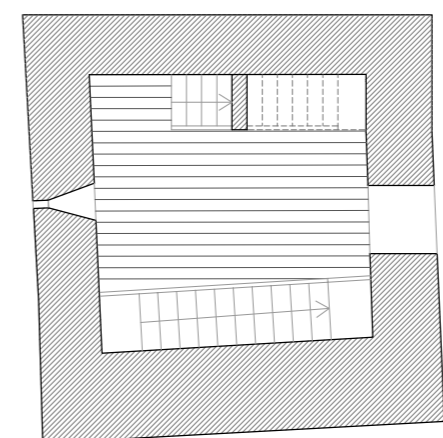
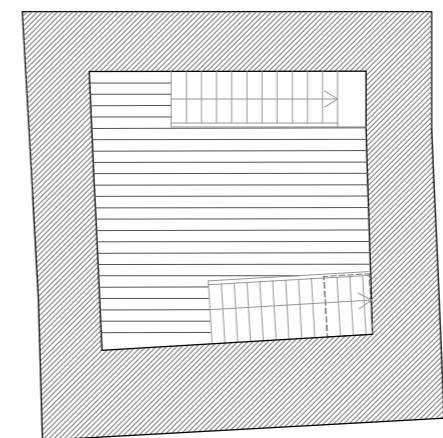
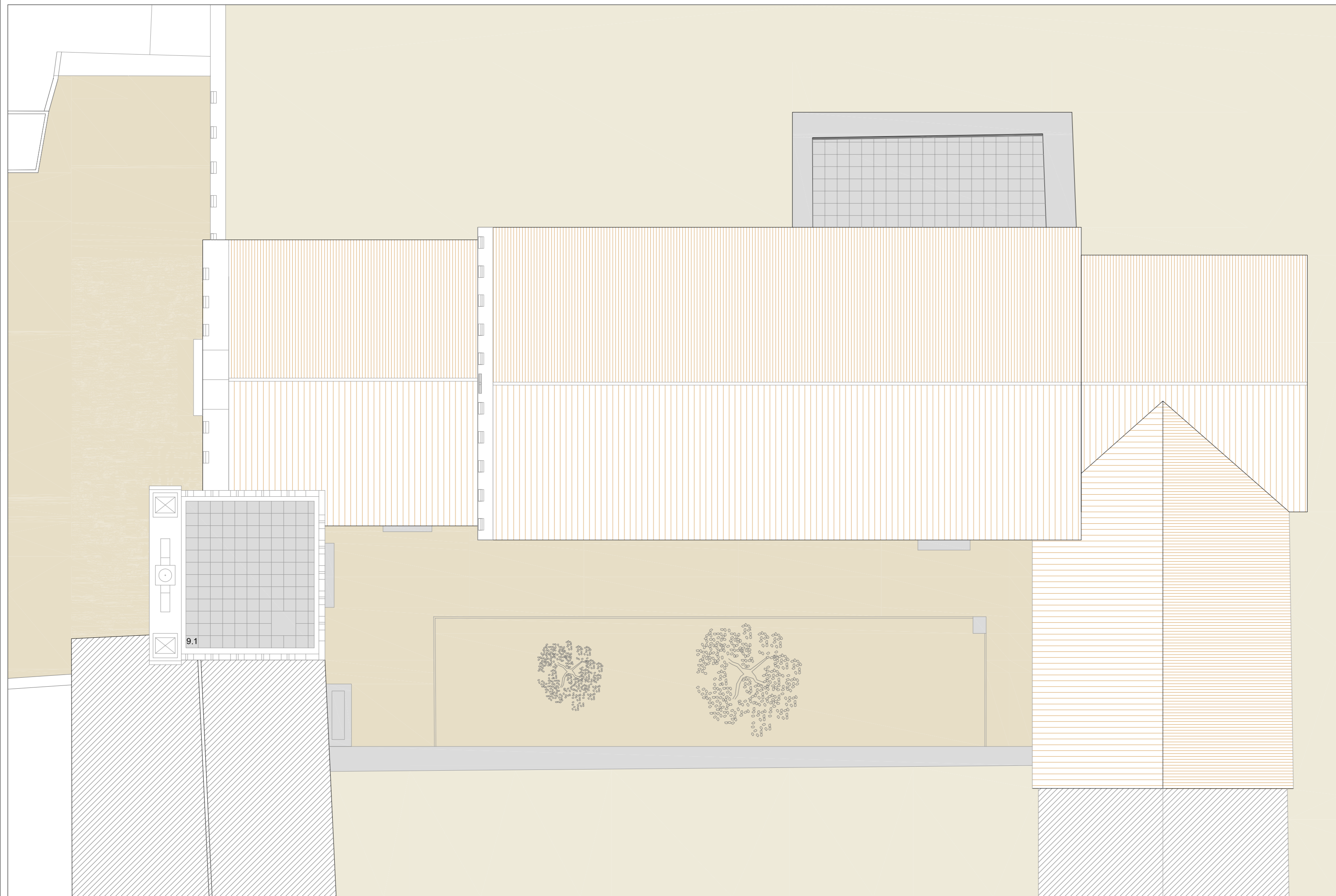


Legenda

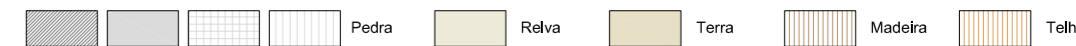


- 1. Galilé
- 2. Nave
- 2.1. Pia Baptismal
- 2.2. Sepulturas
- 3. "Tesouro"
- 4. Capela-Mor
- 4.1. Altar e Retábulo
- 5. Sacristia
- 6. Acesso piso superior
- 6.1. Arrumos
- 7. Sala de catequese
- 7.1. Arrumos
- 8. Espaço do antigo claustro
- 9. Planta baixa da torre + Painel expositivo

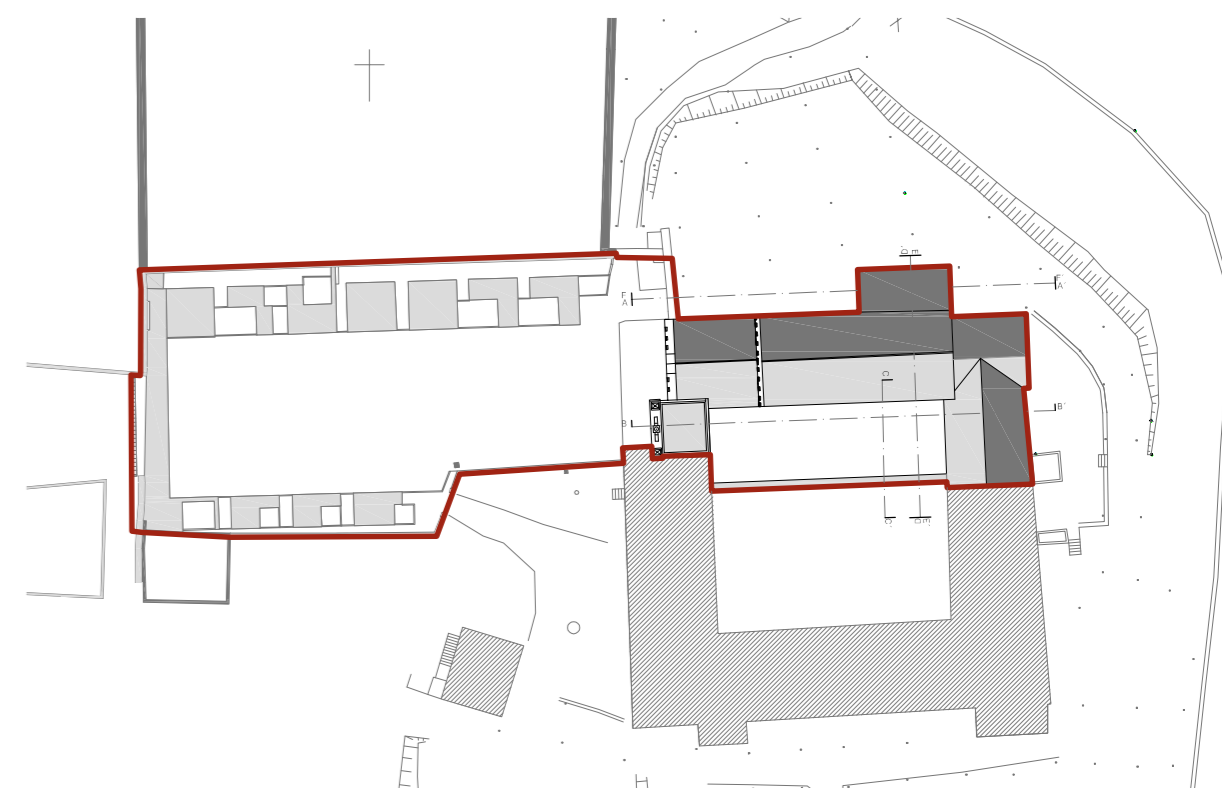




Legenda



9.1. Cobertura acessível da torre



Zona de intervenção Planta de implantação Esc. 1/750



SECRETÁRIO DE ESTADO
DA CULTURA

programa de ação "PATRIMÓNIO CULTURAL DA ROTA DO ROMÂNICO | TÂMEGA"



DIREÇÃO REGIONAL DE CULTURA DO NORTE

Igreja de Mancelos e Adro

| Mancelos, Amarante

DIREÇÃO DE SERVIÇOS DOS BENS CULTURAIS
Rua da Igreja de Ramalde . 4150.091 PORTO

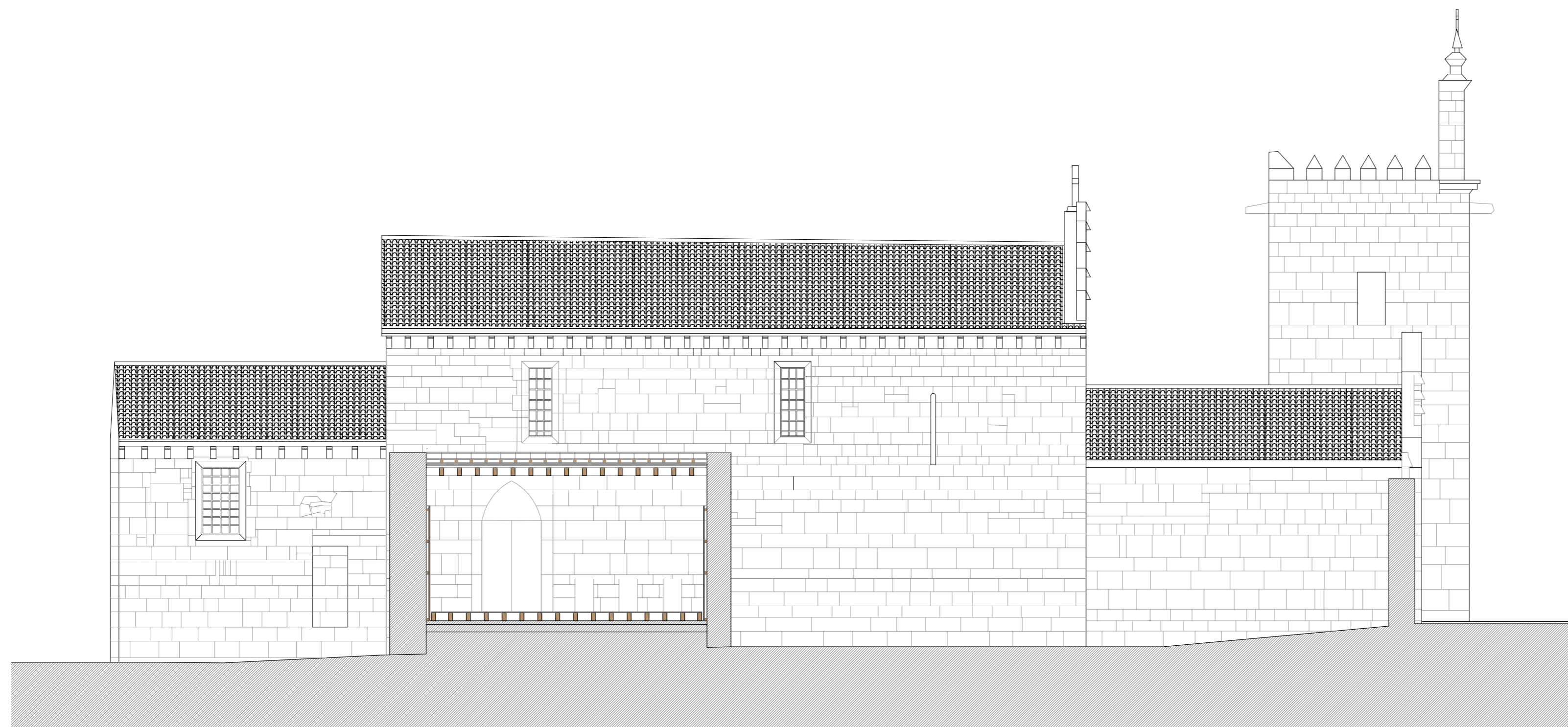
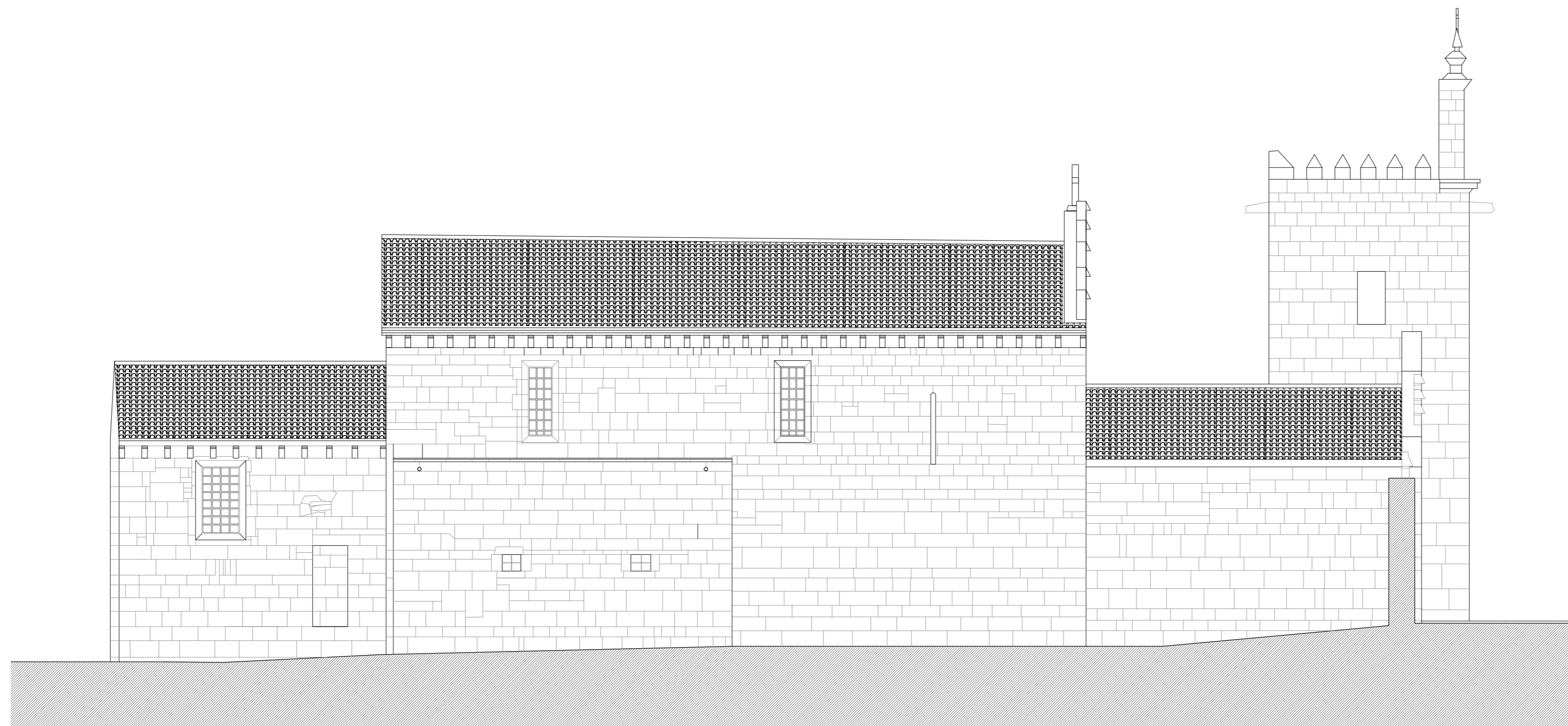
Conservação, salvaguarda e valorização geral do Imóvel

data: março 2012 esc.: 1/100

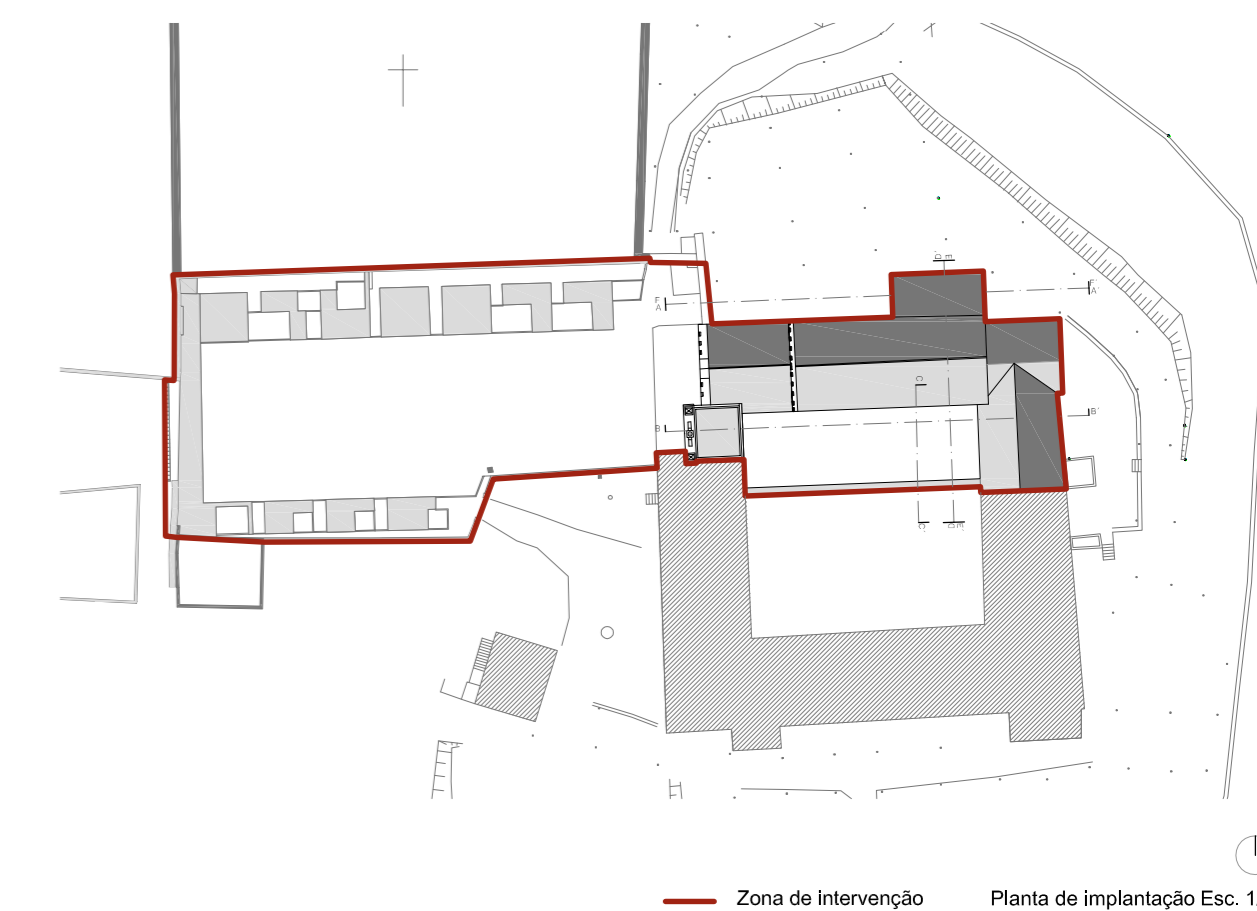
dsbc.drcn@culturanorte.pt | tel: +351 22 6197080 | fax: +351 22 6179385

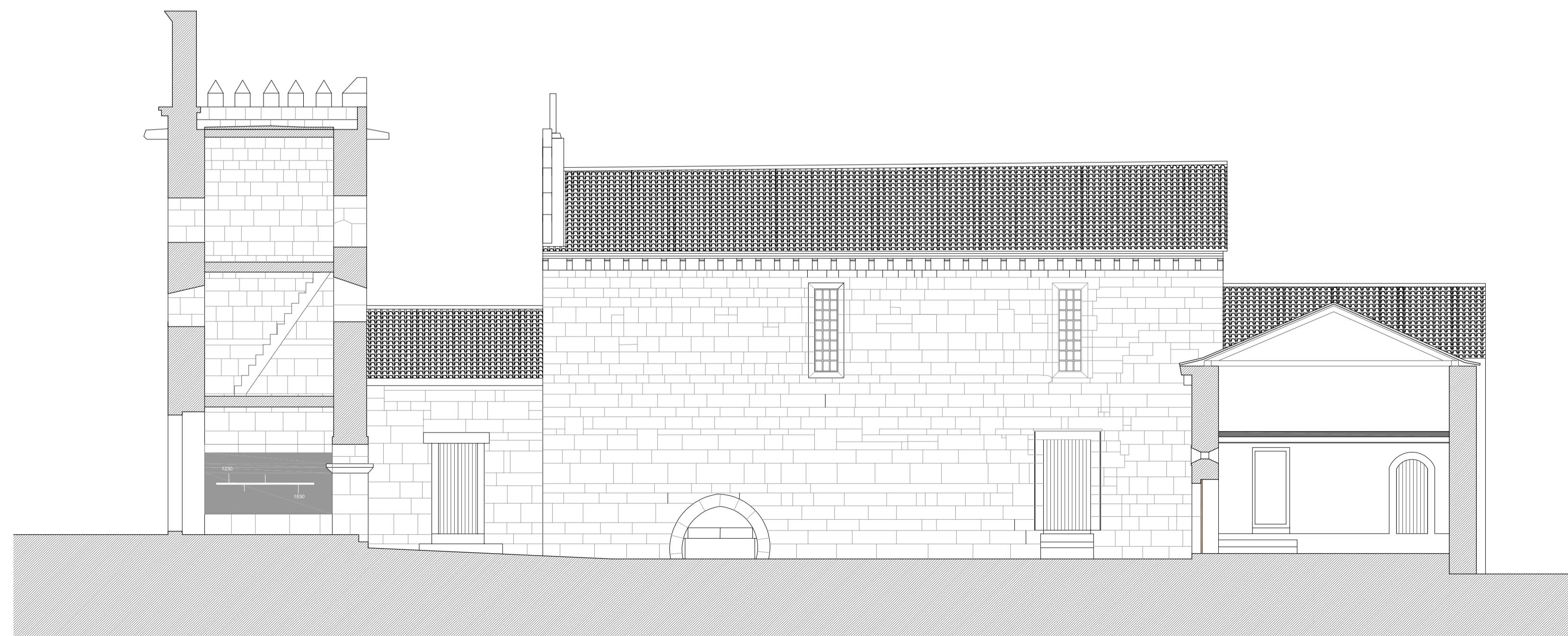
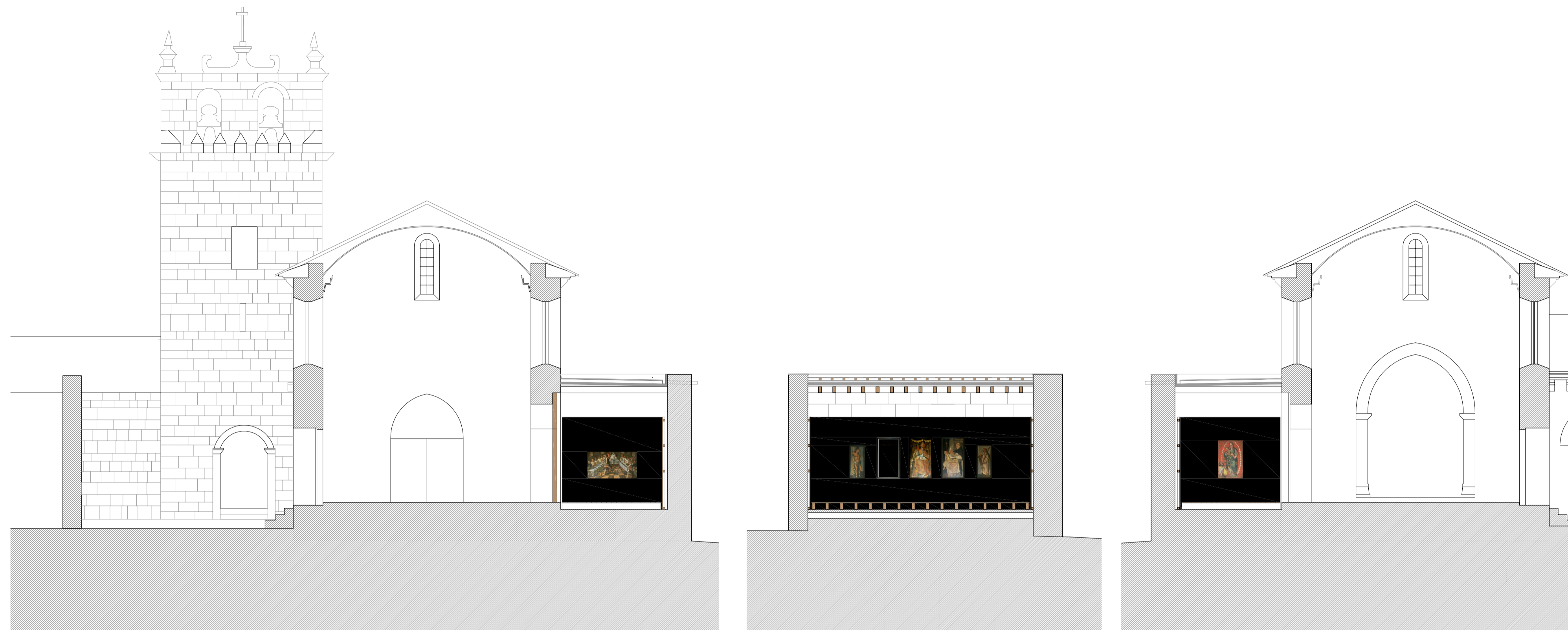
Jorge da Costa, Arq. c/ Isabel Norton, Arq.

fase: Proposta des.: 2.2

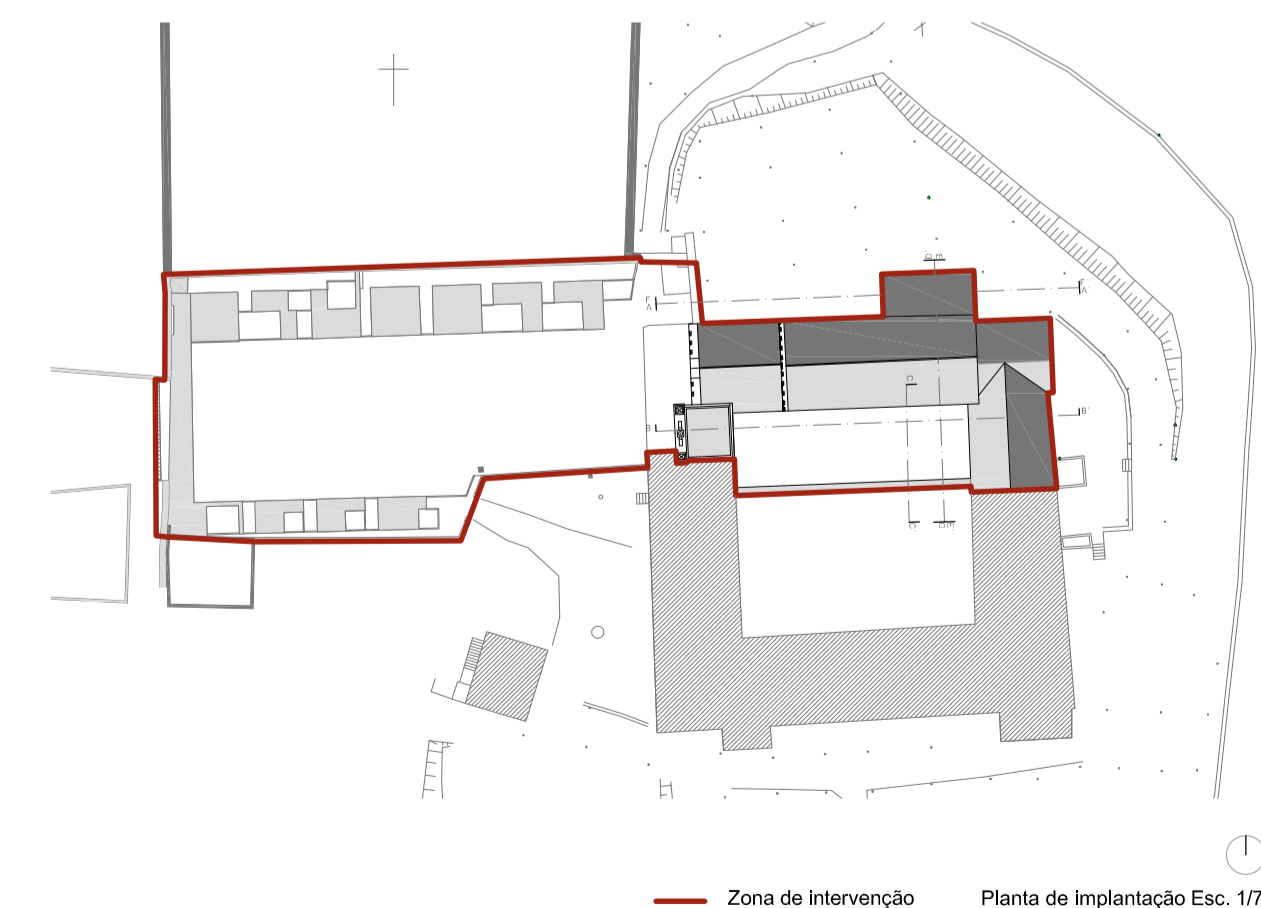
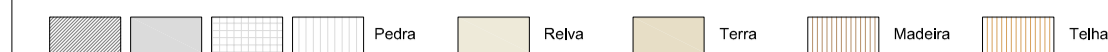


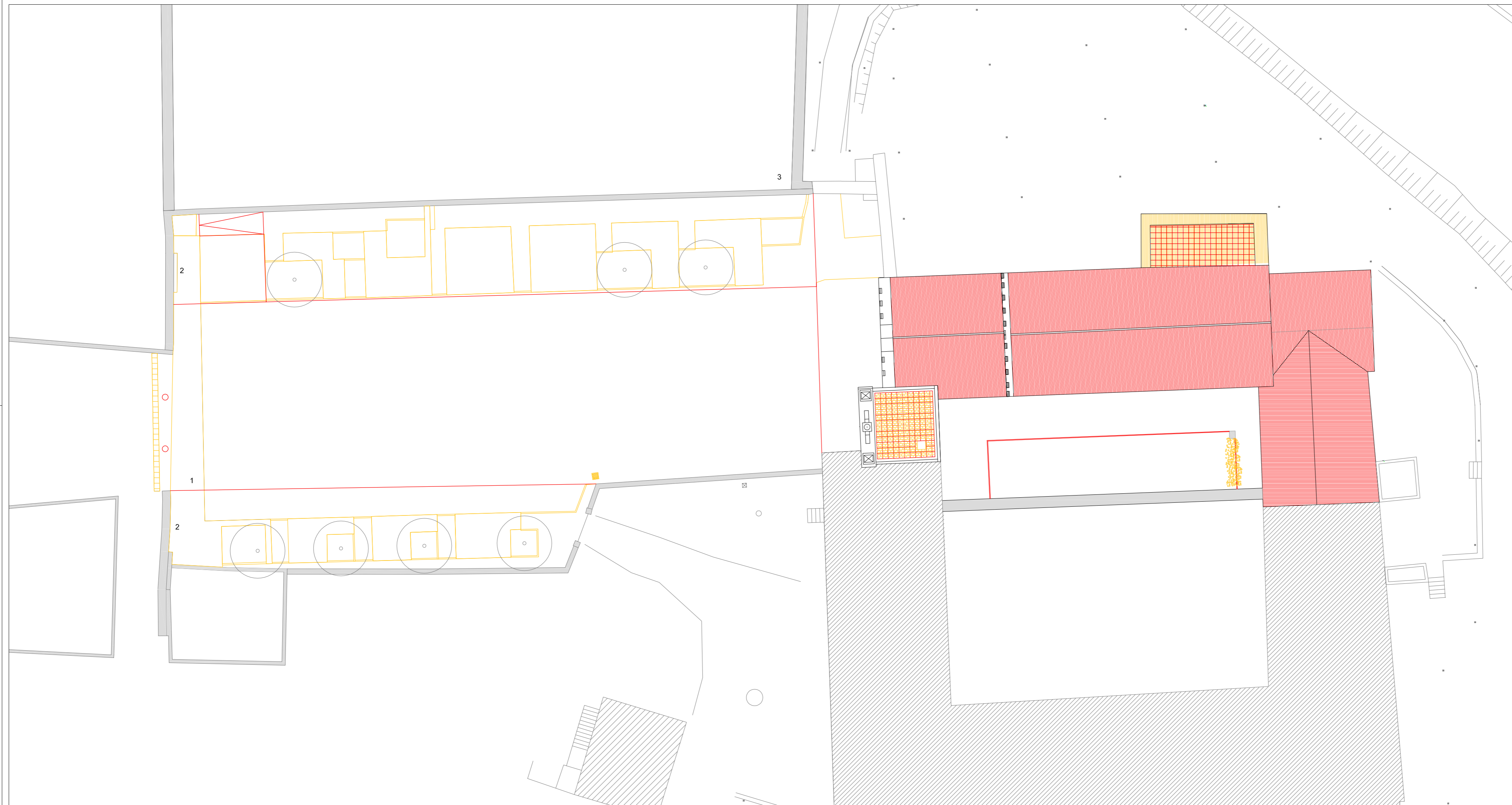
Legenda





Legenda



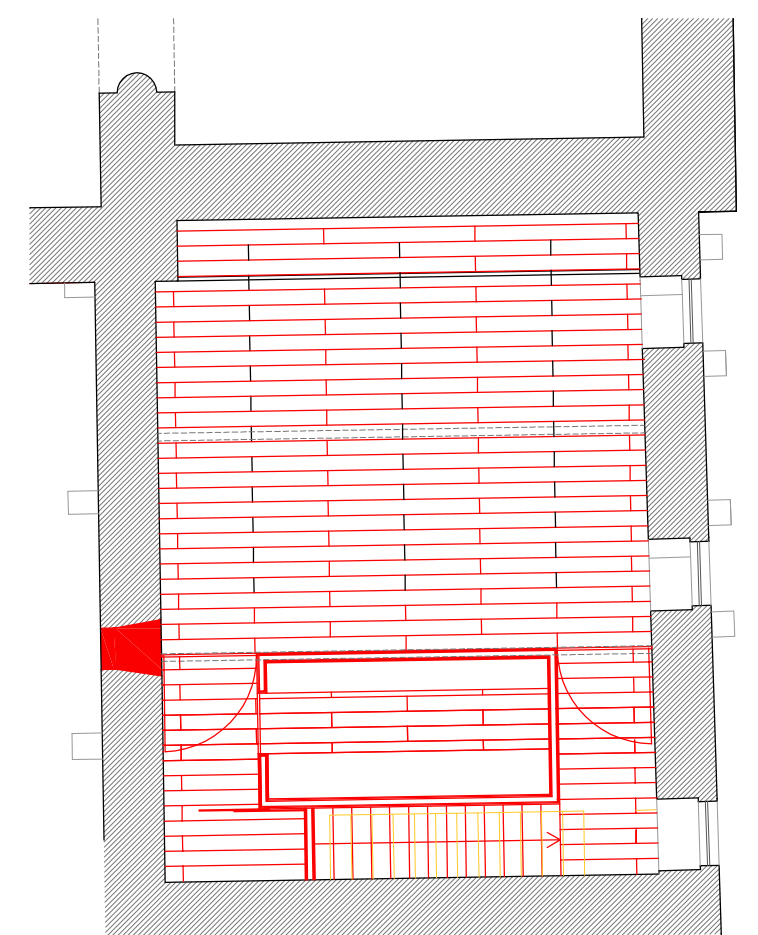
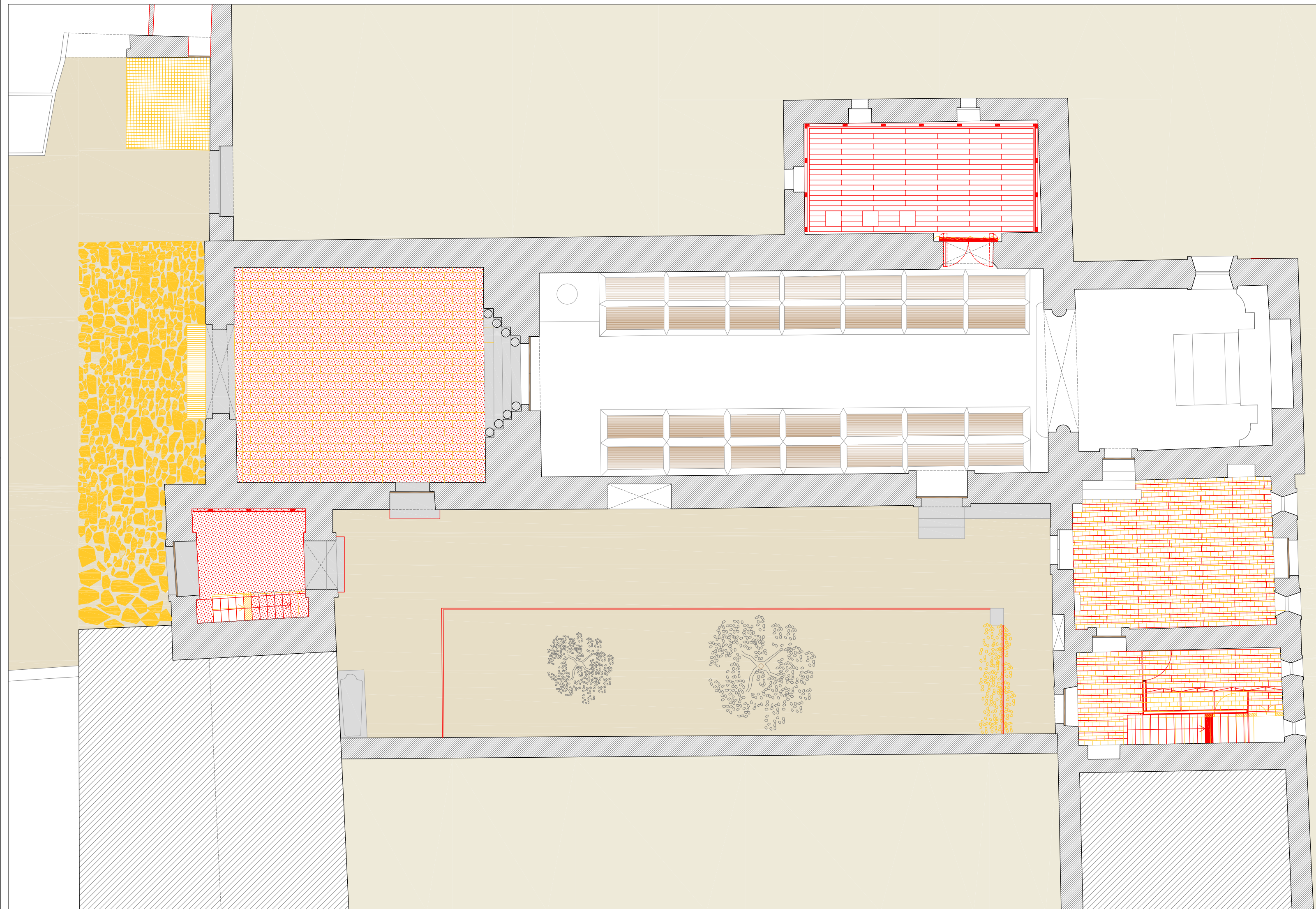


Legenda

- A demoir
- A construir
- Novo pavimento em granito (estereotomia a definir)

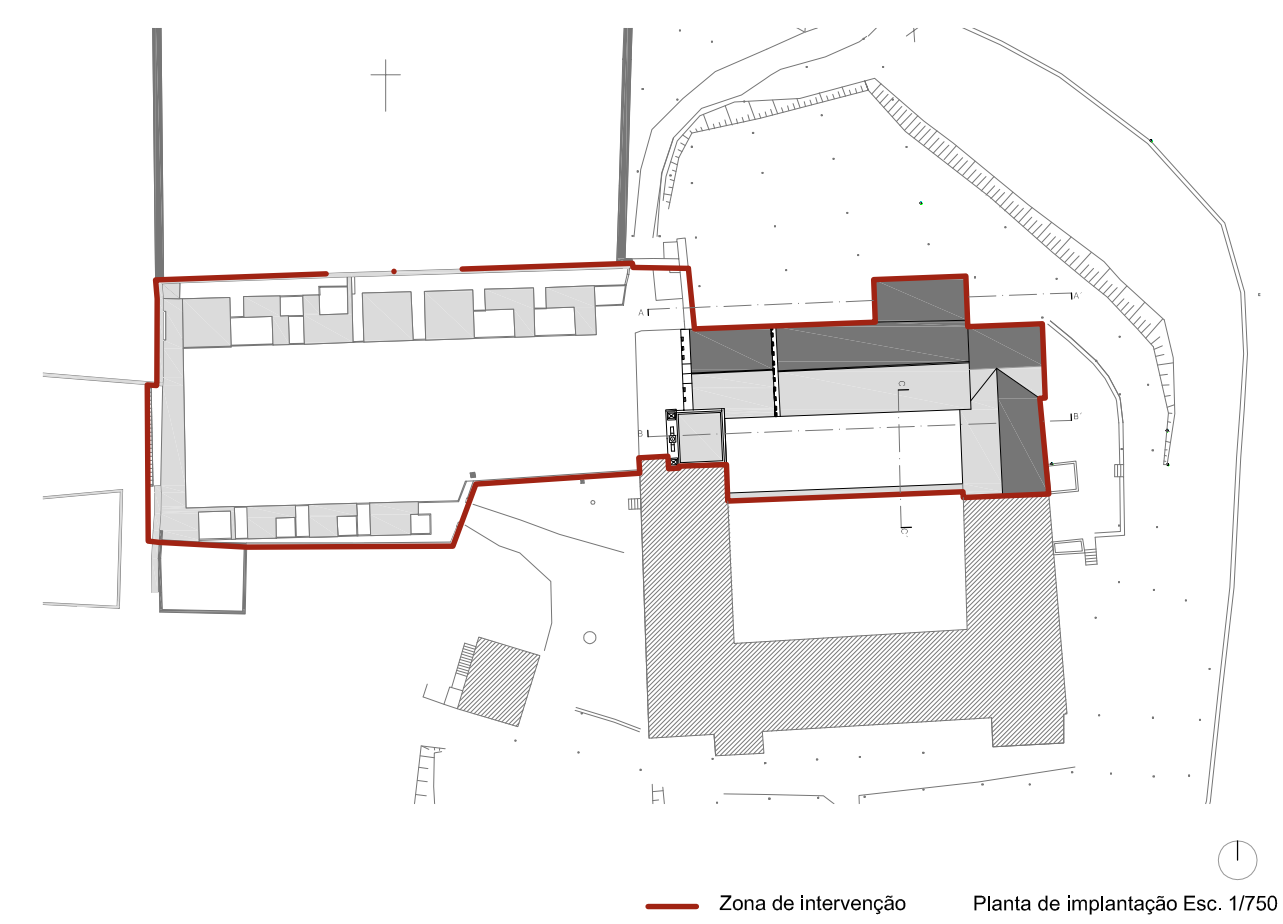
- 1. Adro
- 2. Fonte
- 3. Cemitério

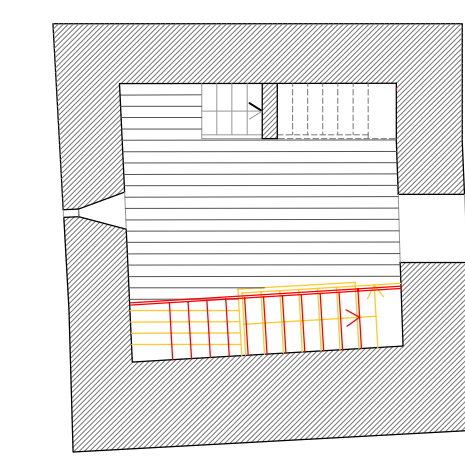
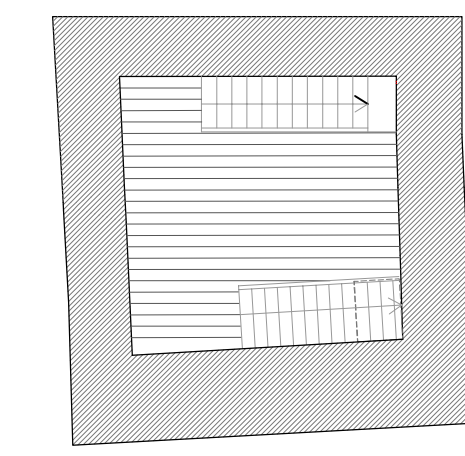
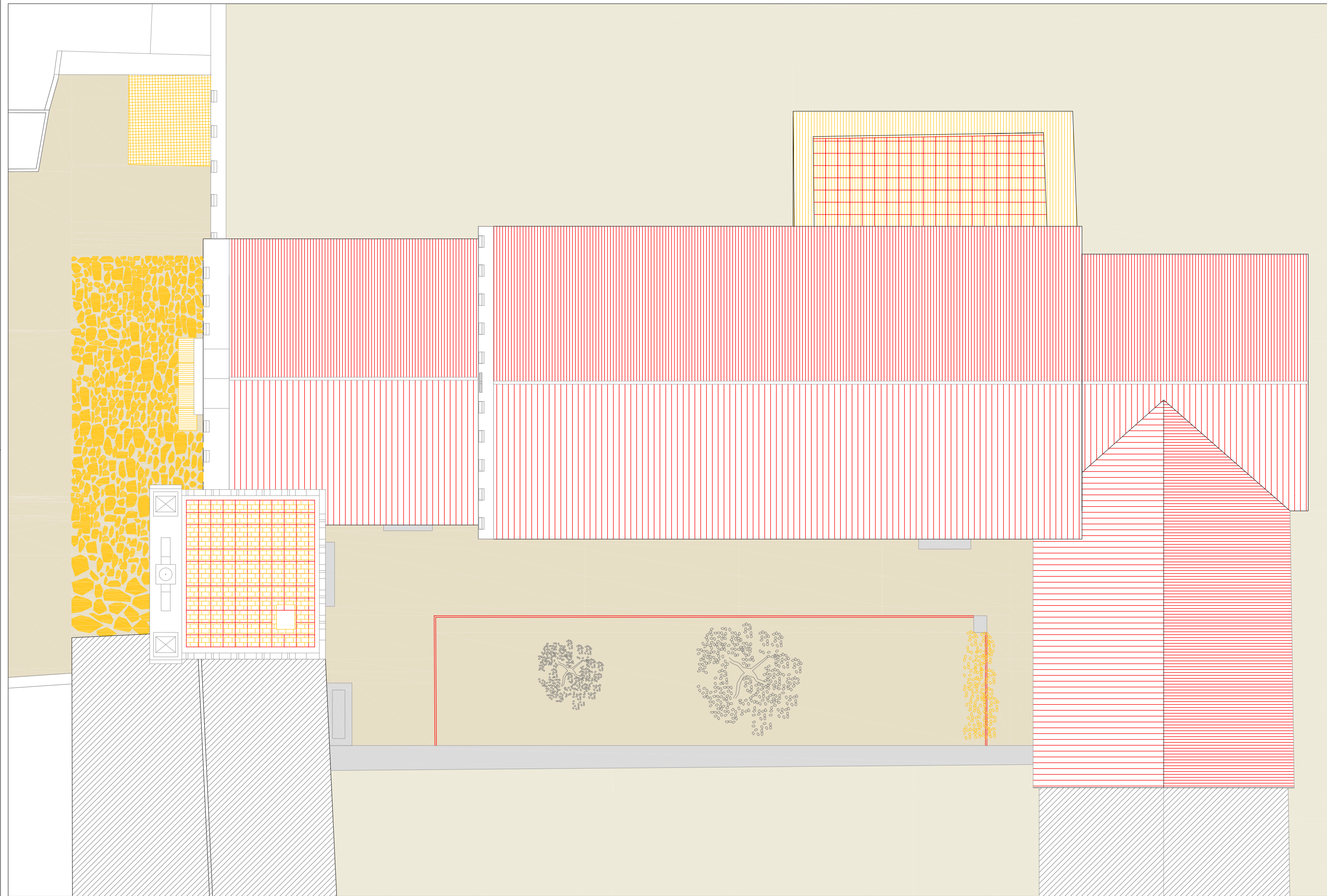
— Zona de intervenção Planta de implantação Esc. 1/750



Legenda

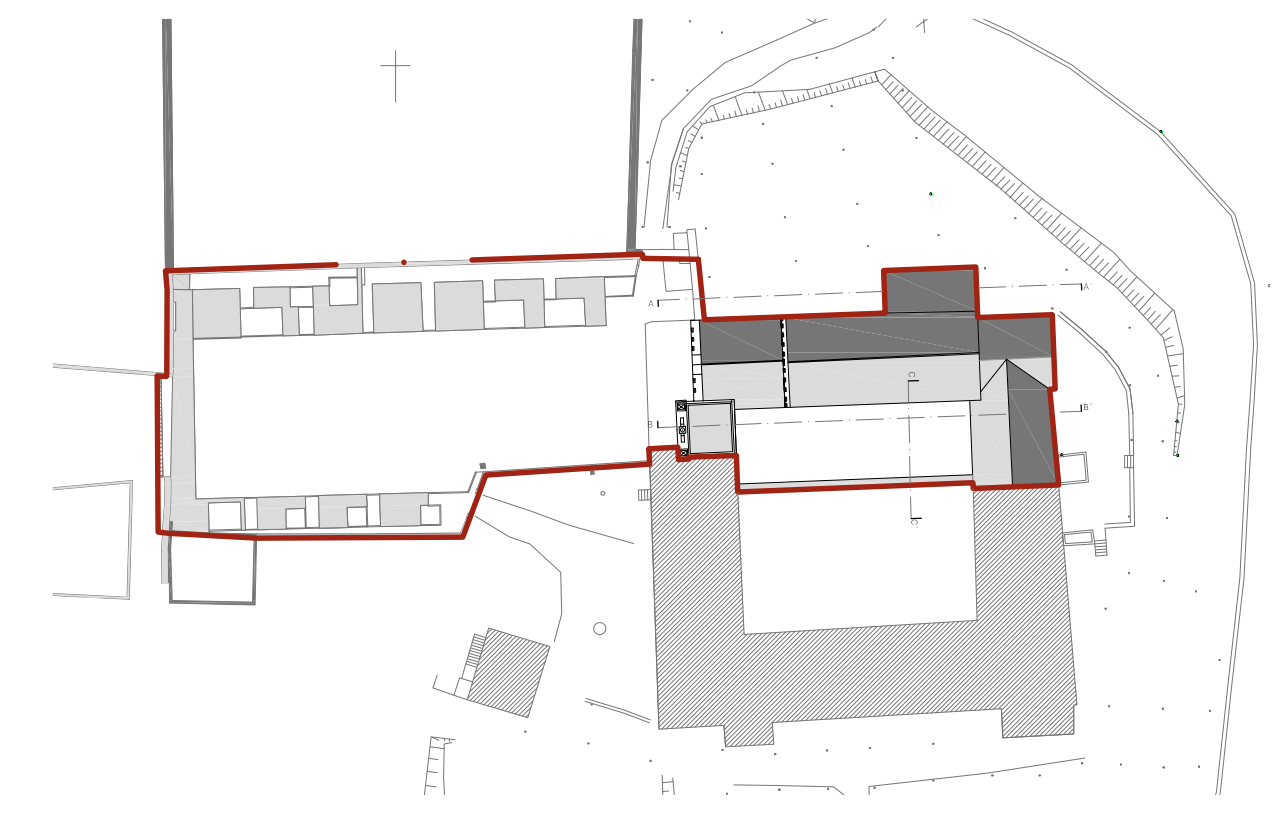
- A demolir
- A construir
- Novo pavimento em granito (estereotomia a definir)



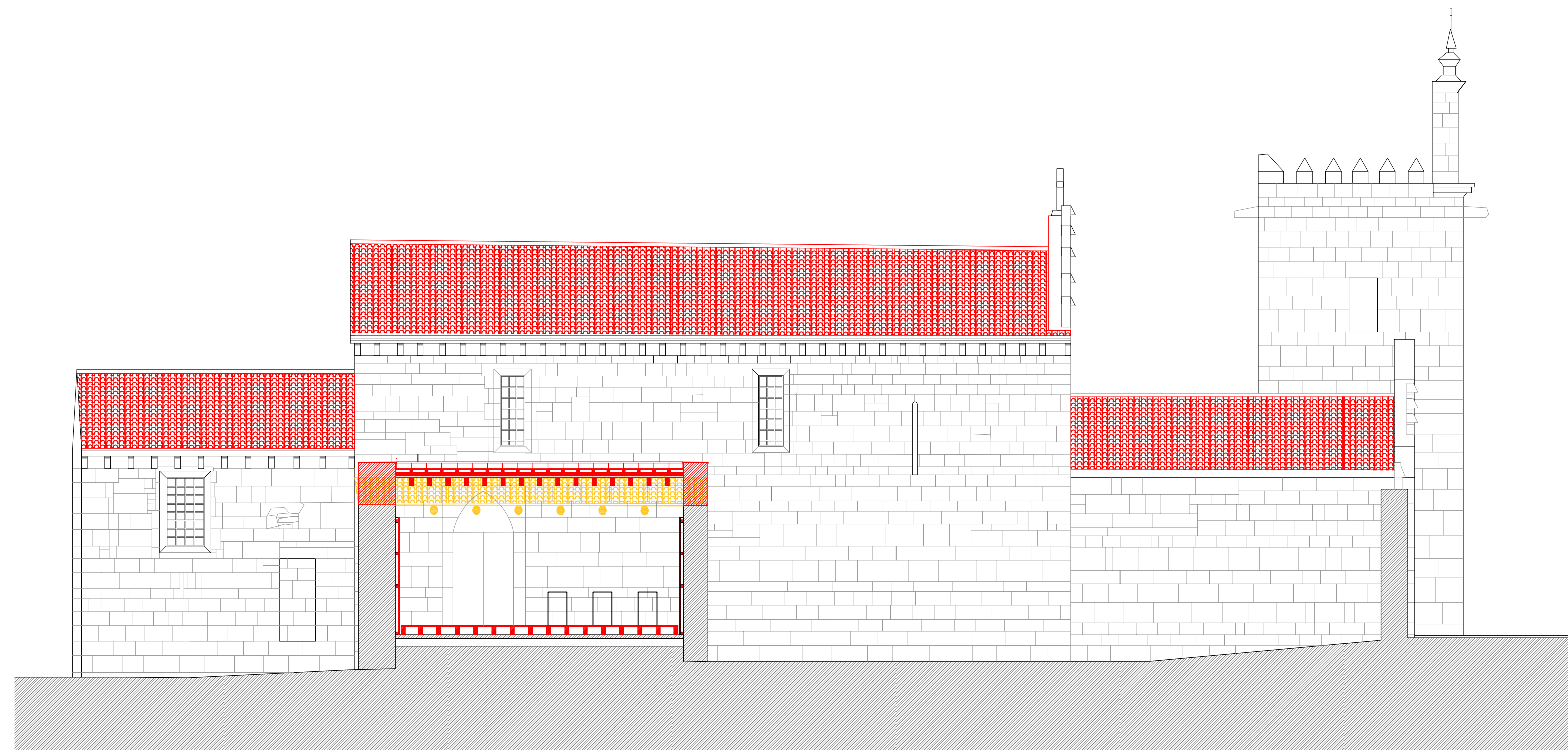
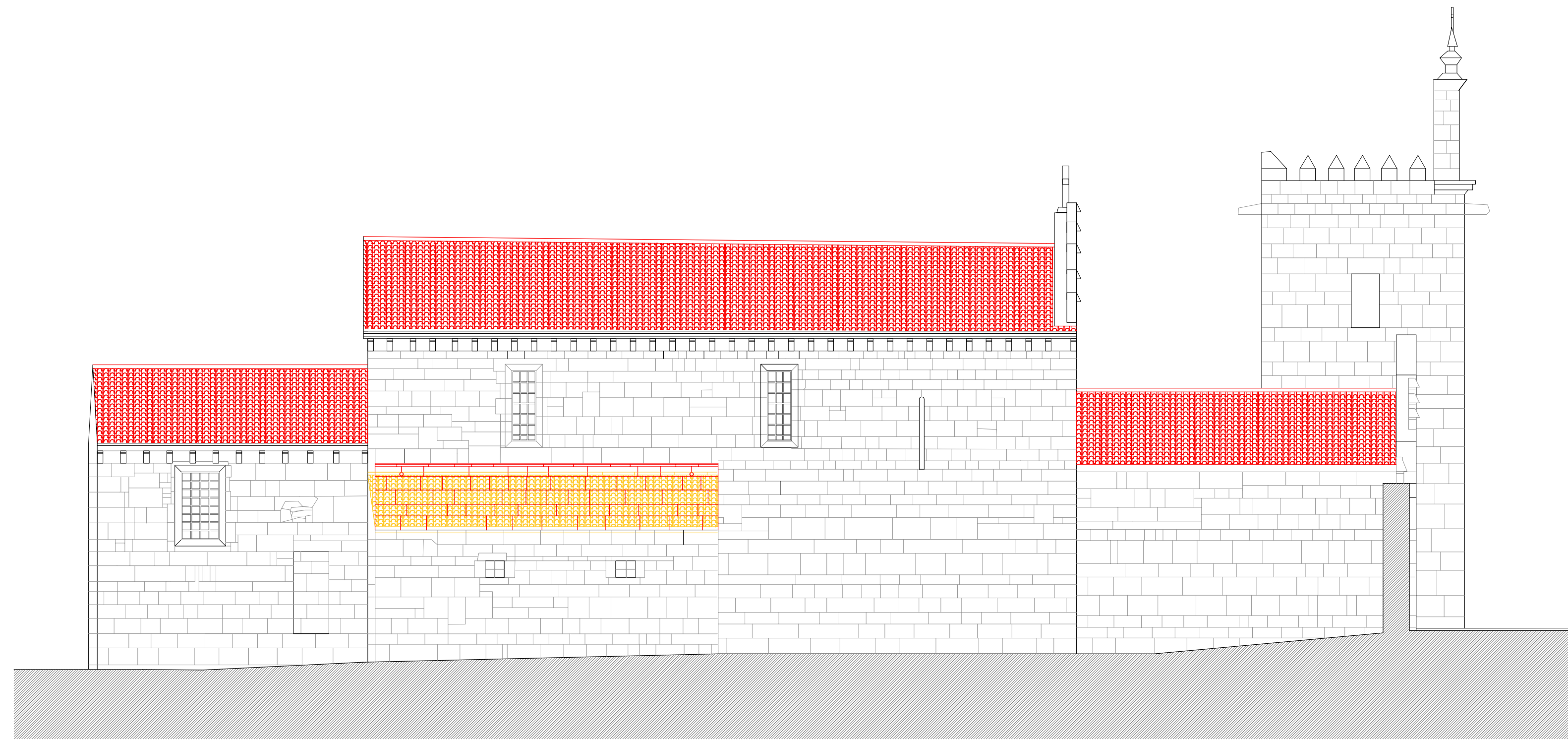


Legenda

- A demolir
- A construir
- Novo pavimento em granito

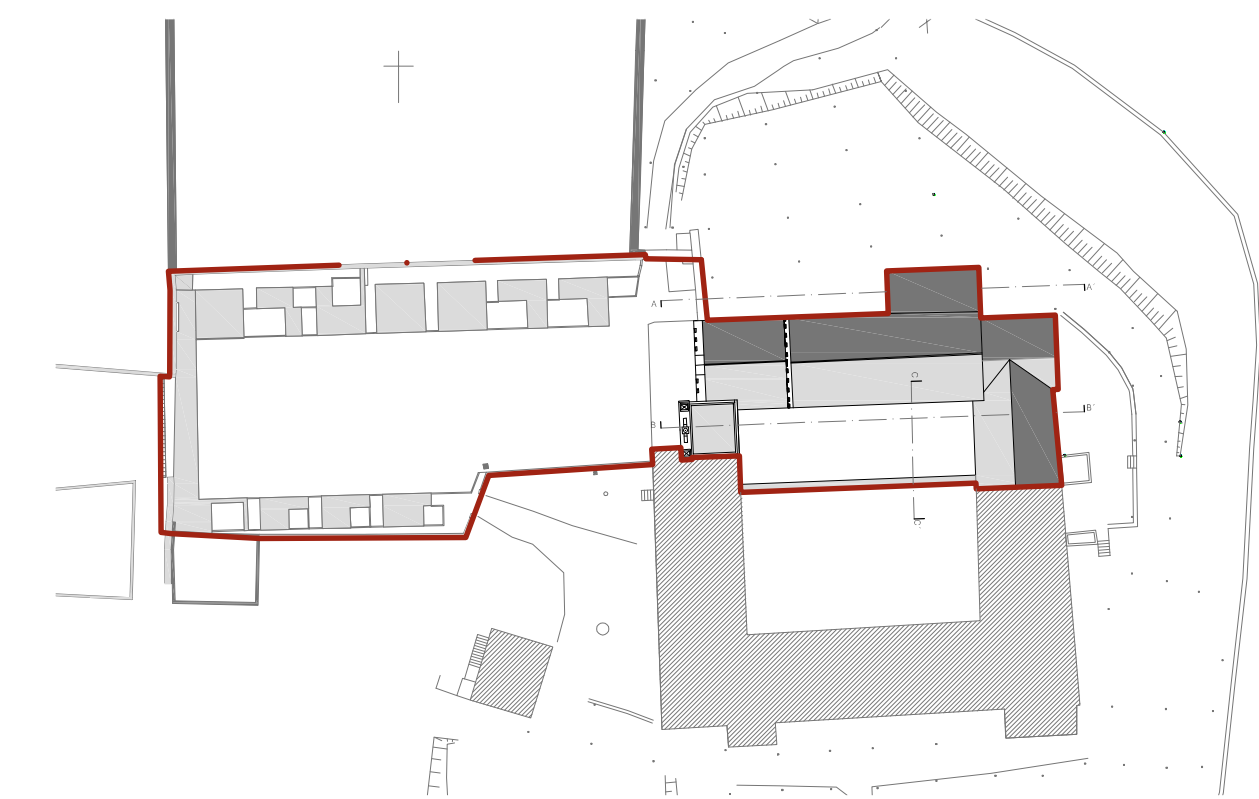


— Zona de intervenção Planta de implantação Esc. 1/750



Legenda

- A demolir
- A construir
- Novo pavimento em granito (estereotomã a definir)



— Zona de intervenção Planta de implantação Esc. 1/750

Legenda

-  A demolir
-  A construir
-  Novo pavimento em granito (estereotomia a definir)

