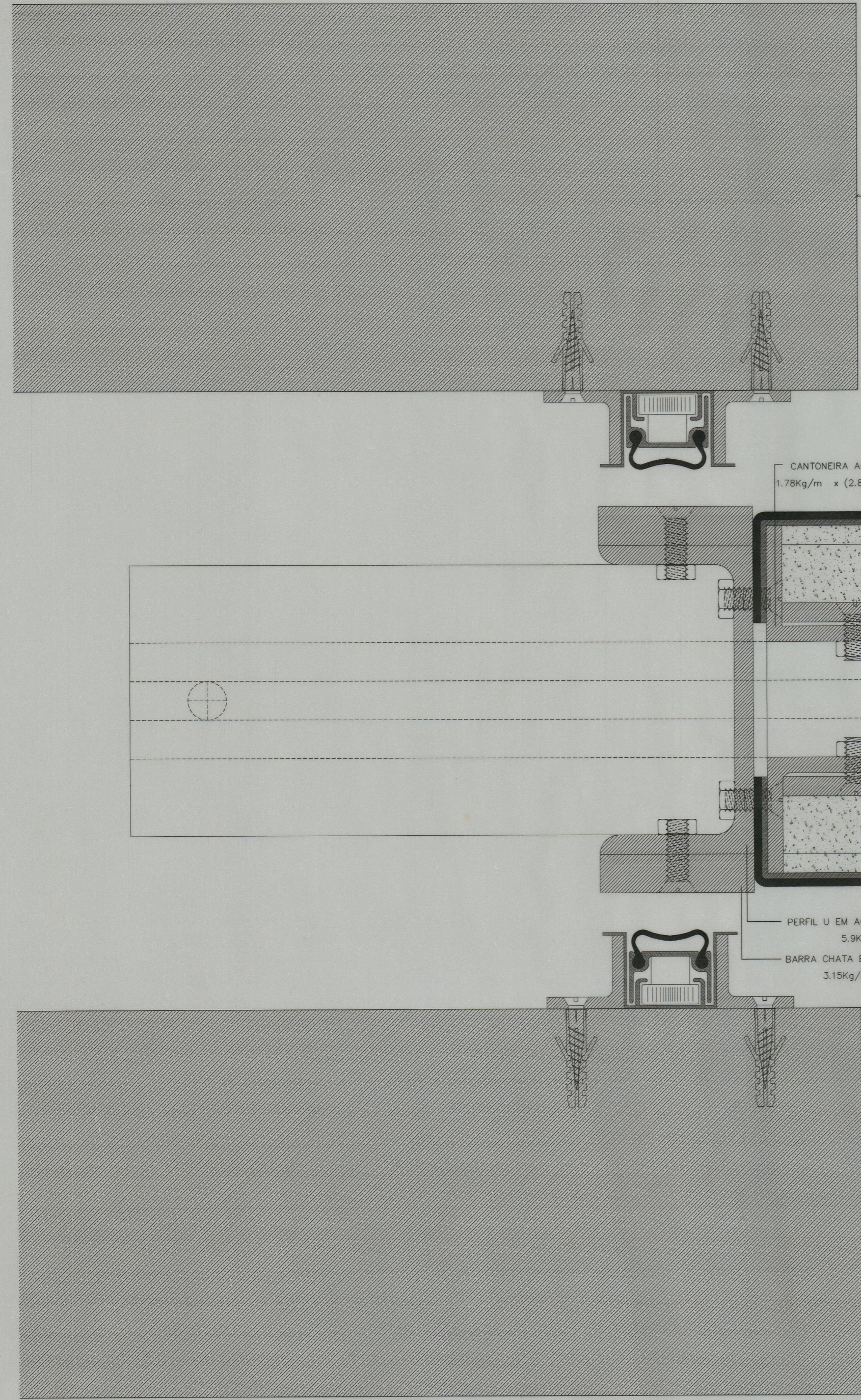


3.03



CANTONEIRA AÇO INOX AISI 316 30x30x4mm.  
 $1.78\text{Kg/m} \times (2.80\text{m} \times 4 + 3.00\text{m} \times 4) = 41.3\text{Kg}$

LÃ DE ROCHA

CHAPA ALUMINIO 2mm  
 $2700\text{ Kg/m}^3 \times 0.002\text{m} \times 3.06\text{m} \times 2.94\text{m} \times 2 = 97.16\text{ Kg}$

CHAPA AÇO INOX 1.5mm  
 $7850\text{ Kg/m}^3 \times 0.0015\text{m} \times 3.05\text{m} \times 2.93\text{m} \times 2 = 210.4\text{Kg}$

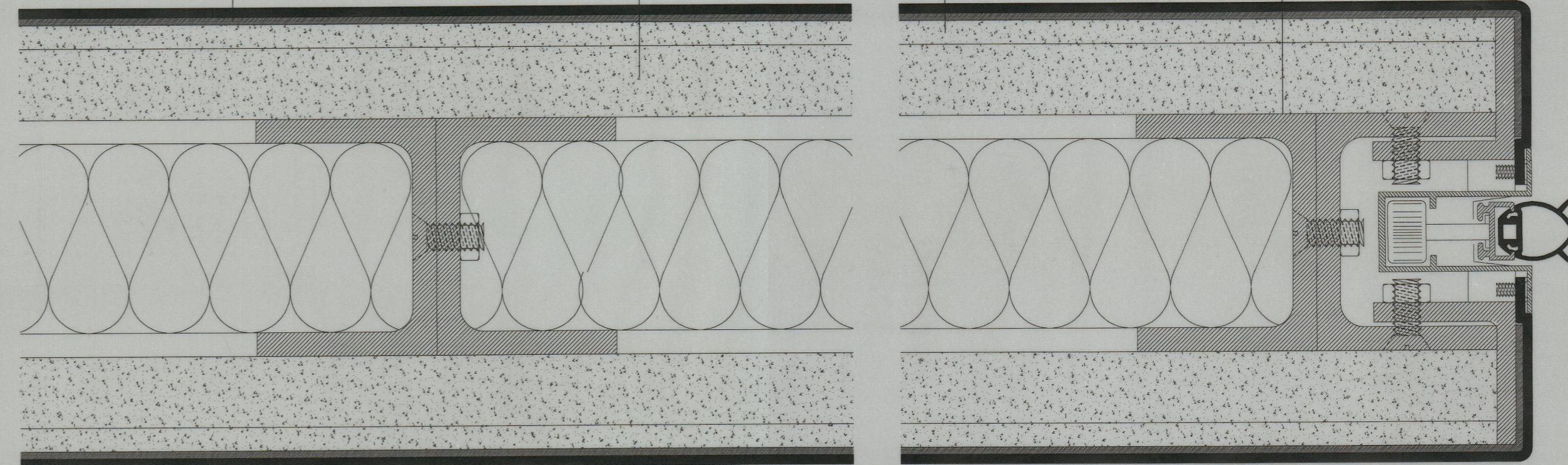
PLADUR  
 $11.9\text{ Kg/m}^2 \times 2.88\text{m} \times 3.03\text{m} \times 2 = 207.7\text{Kg/m}$

CORTIÇA  
 $30\text{ Kg/m}^3 \times 0.005\text{m} \times 2.88\text{m} \times 3.03\text{m} \times 2 = 2.62\text{Kg}$

BARRA DE AÇO EM U 50x3.6x5mm  
 $5.7\text{ Kg/m} \times (2.80\text{m} \times 6 + 3.00\text{m} \times 6) = 198.3\text{Kg}$

PERFIL U EM AÇO INOX 80 x 40 x 5 x 5mm  
 $5.9\text{Kg/m} \times 2.8 = 16.5\text{Kg}$

BARRA CHATA EM AÇO INOX 40 x 10mm  
 $3.15\text{Kg/m} \times 2.8 \times 2 = 17.64\text{Kg}$



CORTE HORIZONTAL

TOTAL ~ 791.6Kg

SOUTO MOURA - ARQUITECTOS, LDA	resp.	col
S.E.C. - SECRETARIA DE ESTADO DA CULTURA		
PROJECTO DE EXECUÇÃO - SERRALHARIAS	ESC. 1:1	FEVEREIRO 2000
PORMENOR DA PORTA DE ALUMINIO - CORTE HORIZONTAL		Nº ficheiro/Nº desenho : P-ALUMINIO-H 17