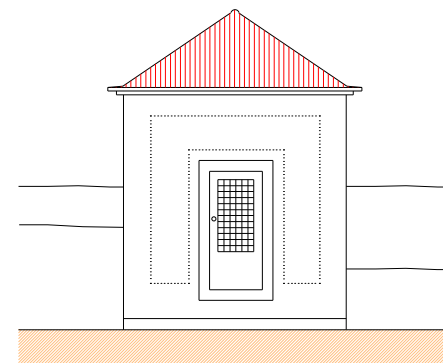
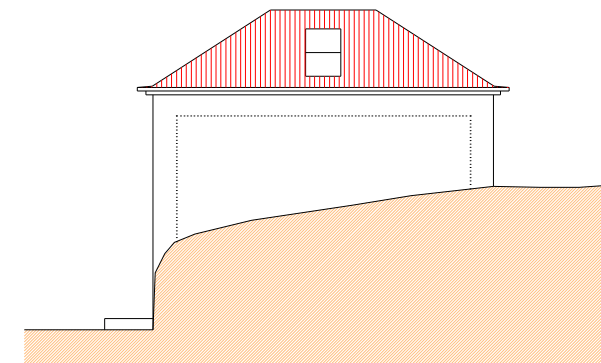


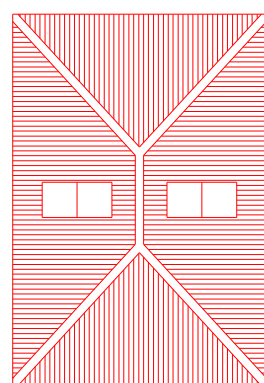
planta



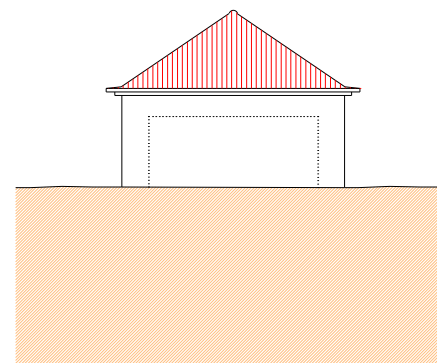
alçado principal



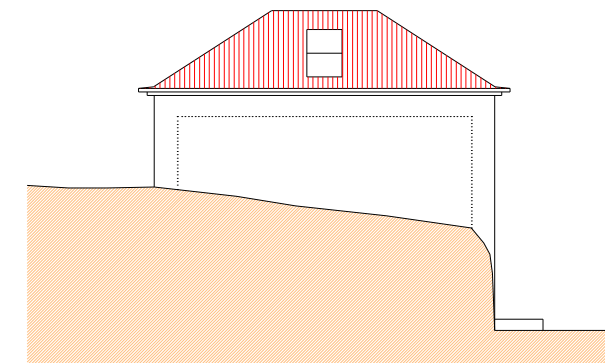
alçado lat. direito



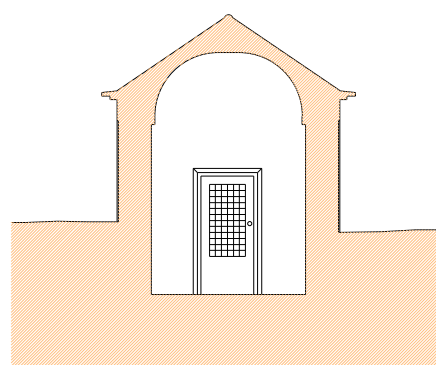
planta da cobertura



alçado posterior



alçado lat. esquerdo



corte 1-2



DIRECÇÃO-GERAL DOS EDIFÍCIOS E MONUMENTOS NACIONAIS
DIRECÇÃO REGIONAL DE EDIFÍCIOS E MONUMENTOS DO CENTRO

MATA NACIONAL DO BUÇACO-Capelas da via sacra Pretório
EXISTENTE-plantas, cortes e alçados

Folha: 01

Escala: 1:100

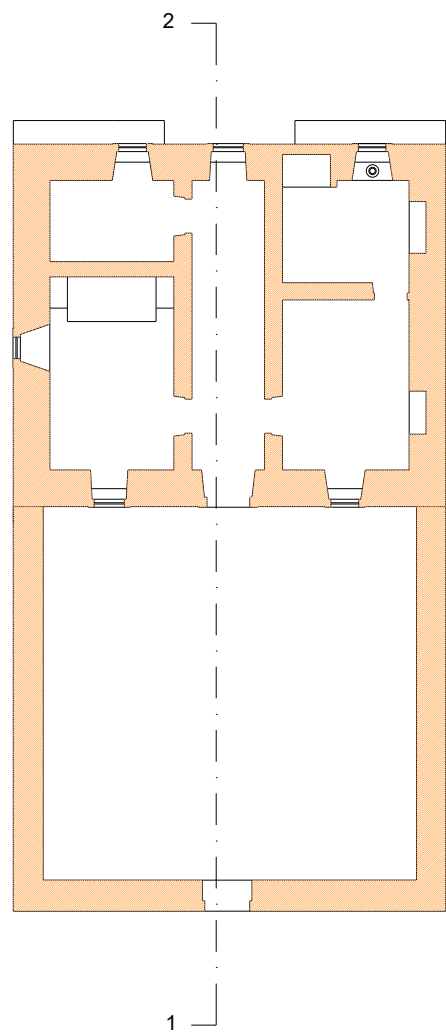
Processo: 011104006

Data: MARÇO/2005

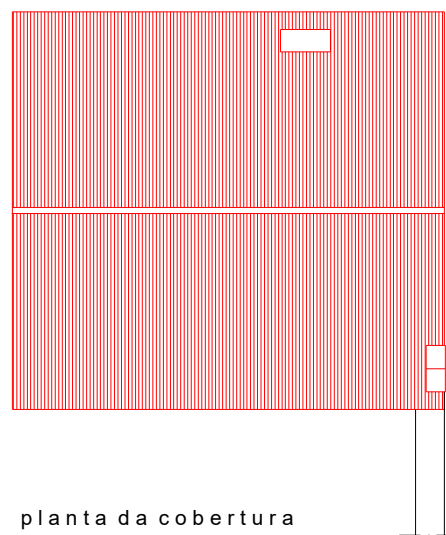
Director:

Arquitecta:

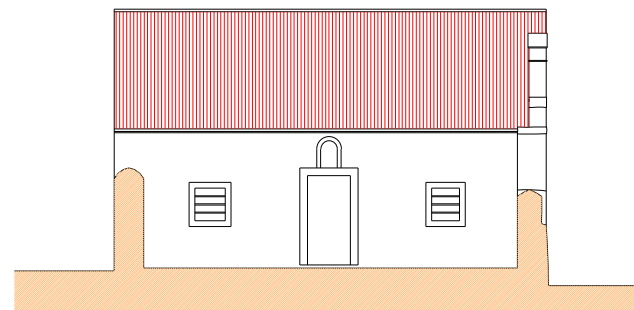
Desenhador:



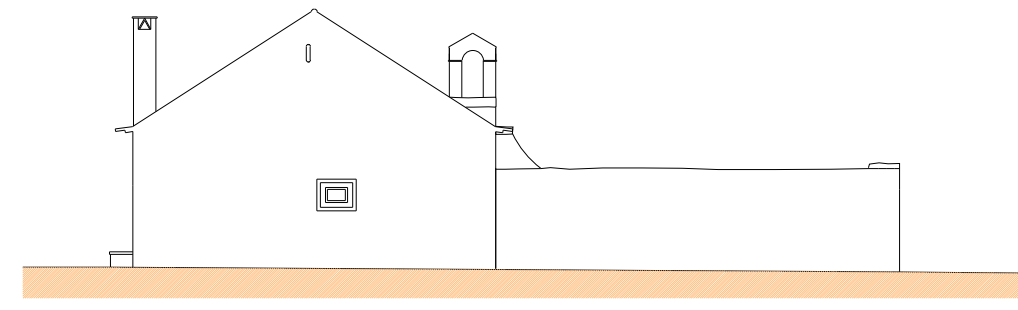
planta



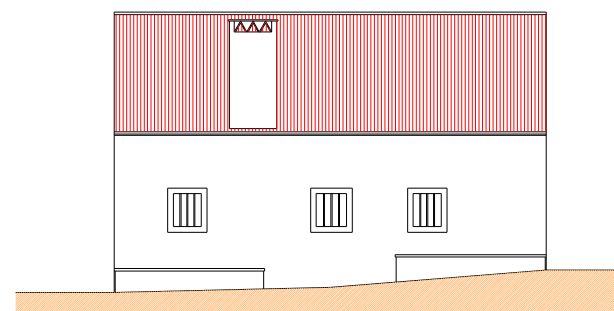
planta da cobertura



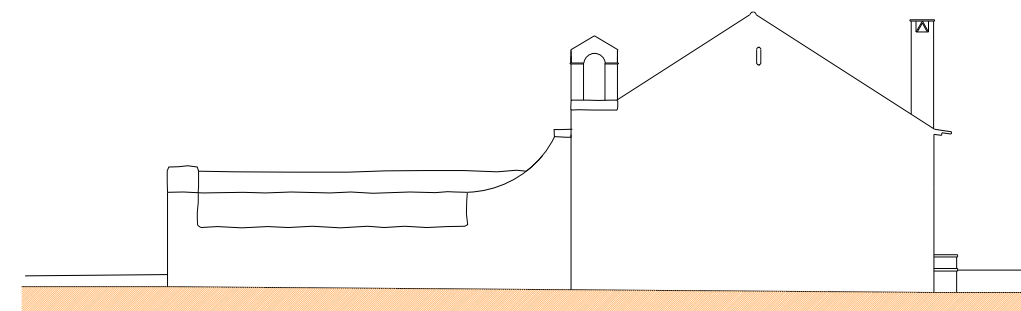
alçado principal



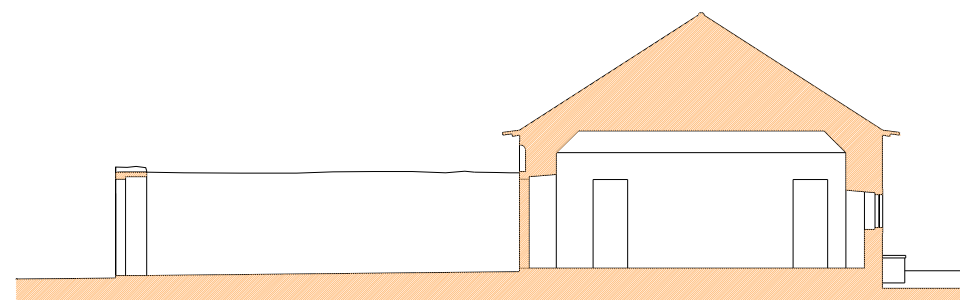
alçado lat.direito



alçado posterior



alçado lat.esquerdo



corte 1-2



DIRECÇÃO-GERAL DOS EDIFÍCIOS E MONUMENTOS NACIONAIS
DIRECÇÃO REGIONAL DE EDIFÍCIOS E MONUMENTOS DO CENTRO

MATA NACIONAL DO BUÇACO-Ermida de S.José

plantas, cortes e alçados

Processo: 011104006

Data: MARÇO/2005

Director:

Arquitecto:

Desenhador:

Folha: 01

Escala: 1:100