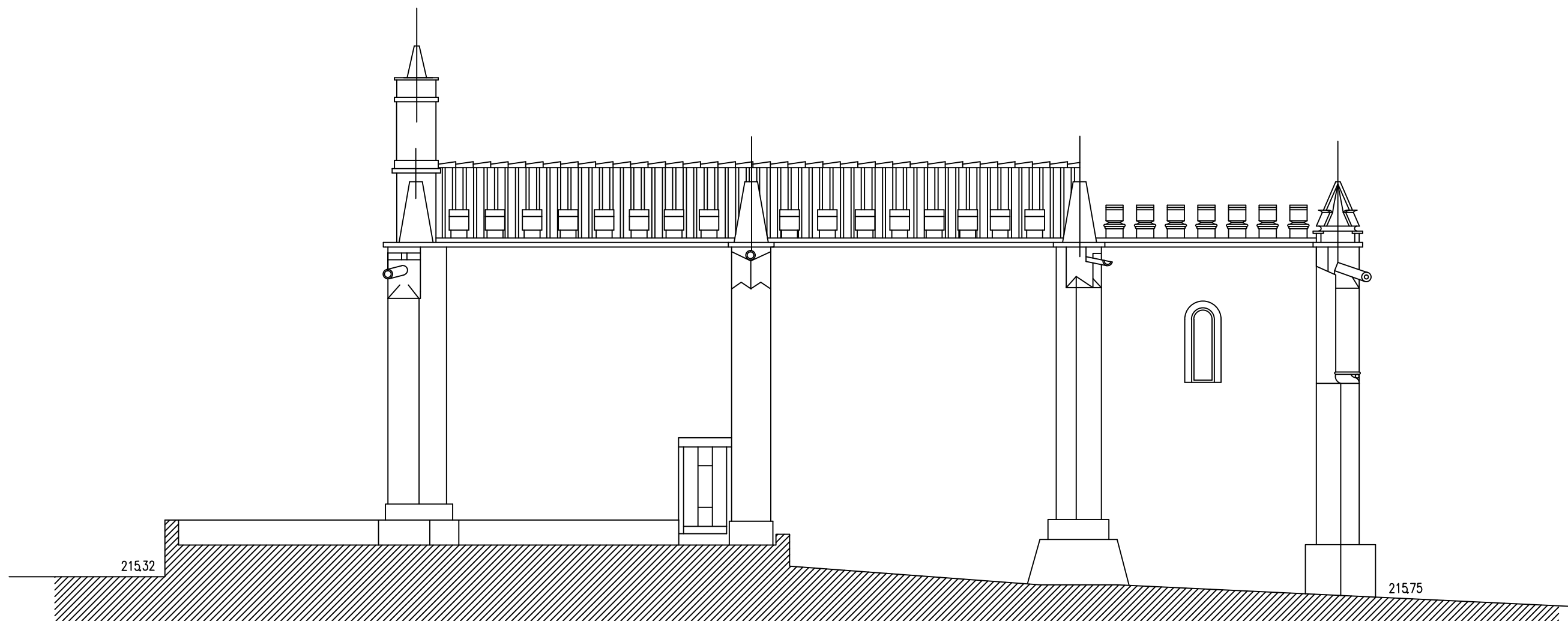


ALÇADO LATERAL DIREITO (SUL)

CAPELA DE SANTA CLARA NA VIDIGUEIRA
ESCALA: 1:100

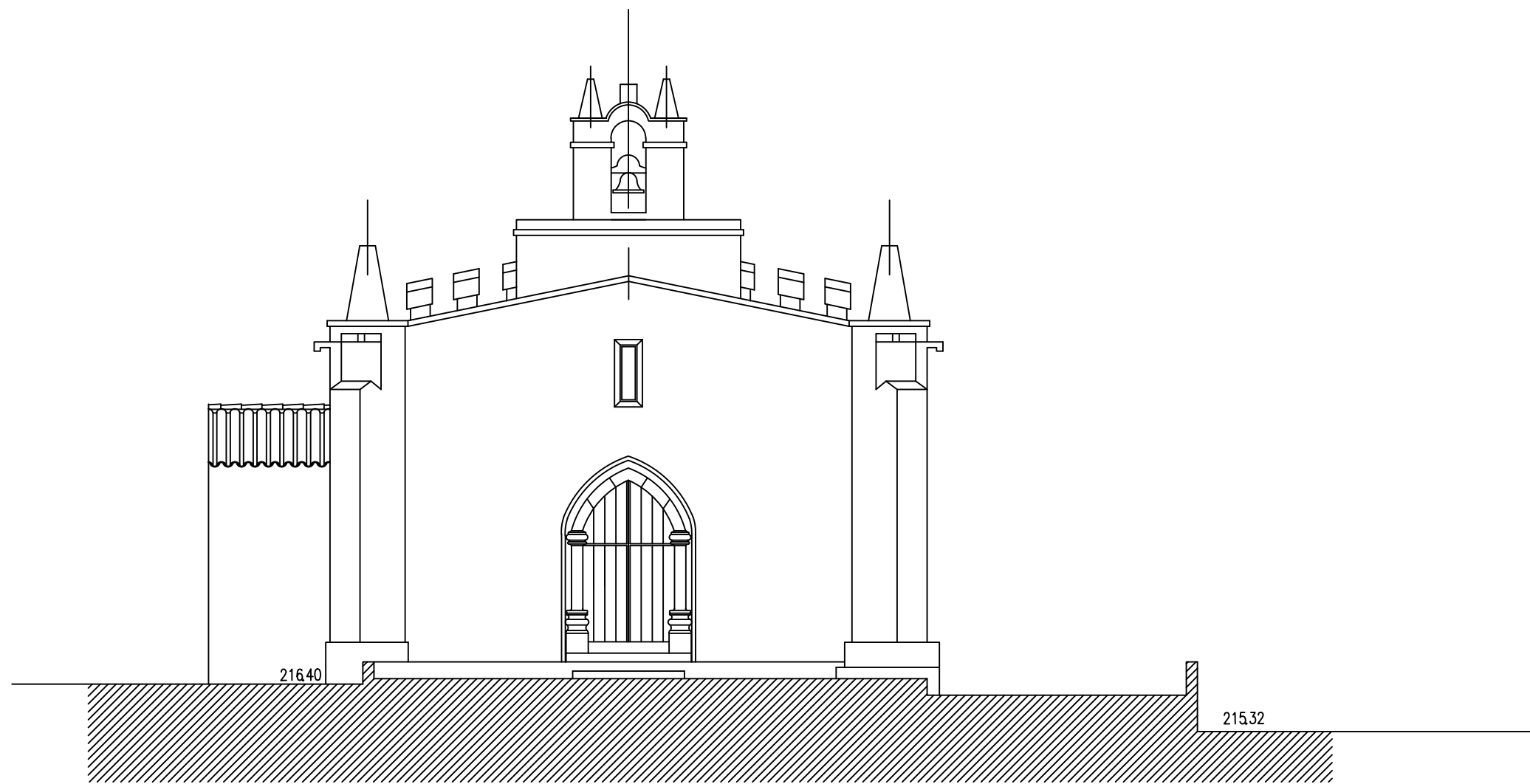


ALÇADO LATERAL DIREITO (SUL)

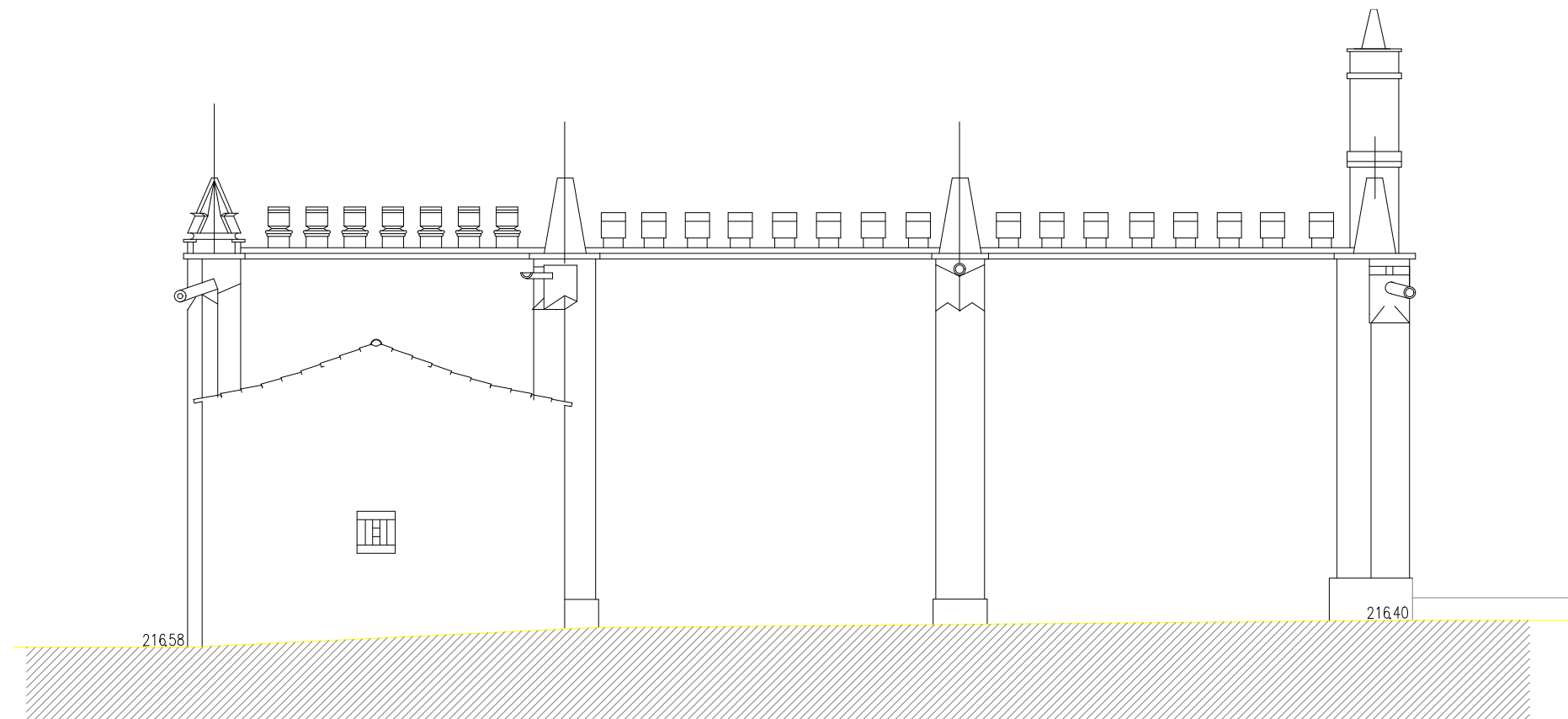


ALÇADO PRINCIPAL (POENTE)

CAPELA DE SANTA CLARA NA VIDIGUEIRA
ESCALA: 1:100

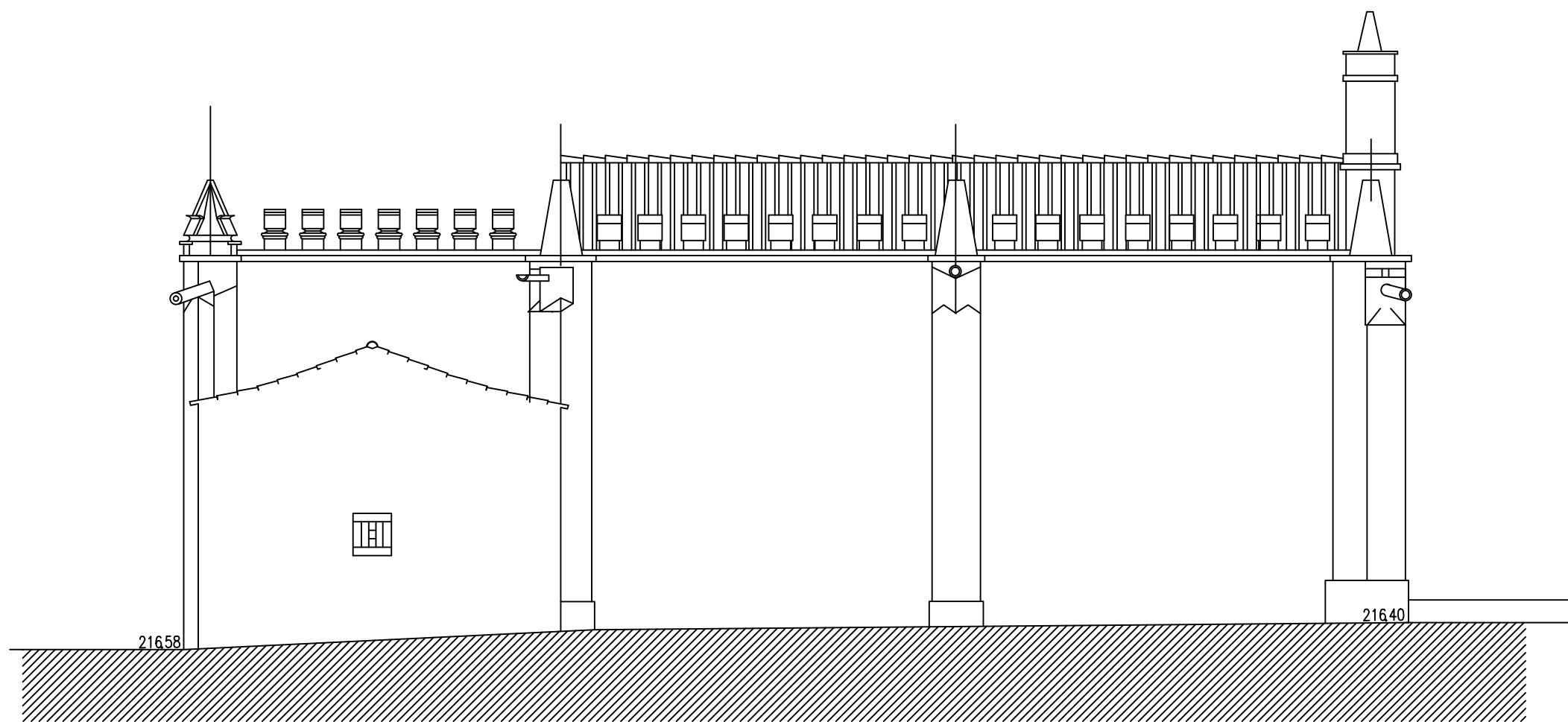


ALÇADO PRINCIPAL (OESTE)



ALÇADO LATERAL ESQUERDO (NORTE)

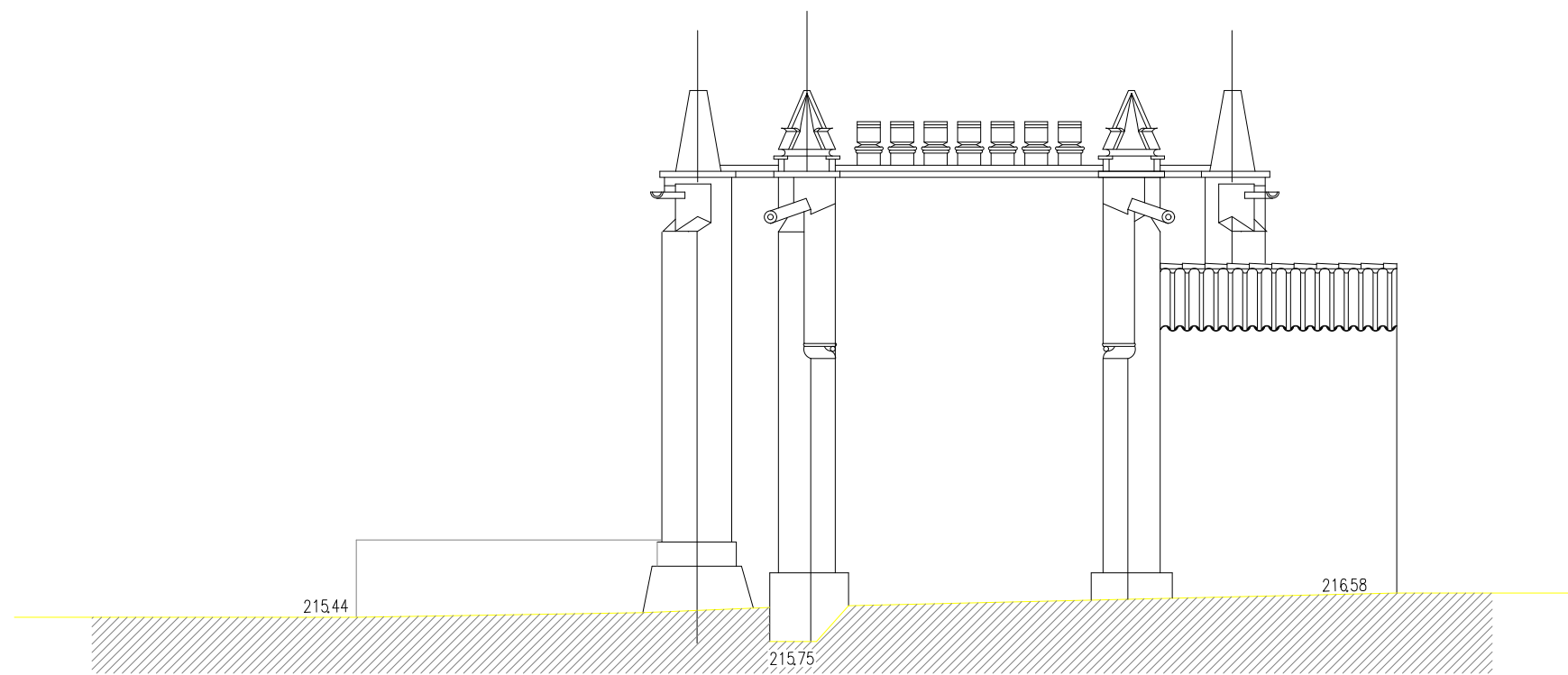
CAPELA DE SANTA CLARA NA VIDIGUEIRA
ESCALA: 1:100



21658

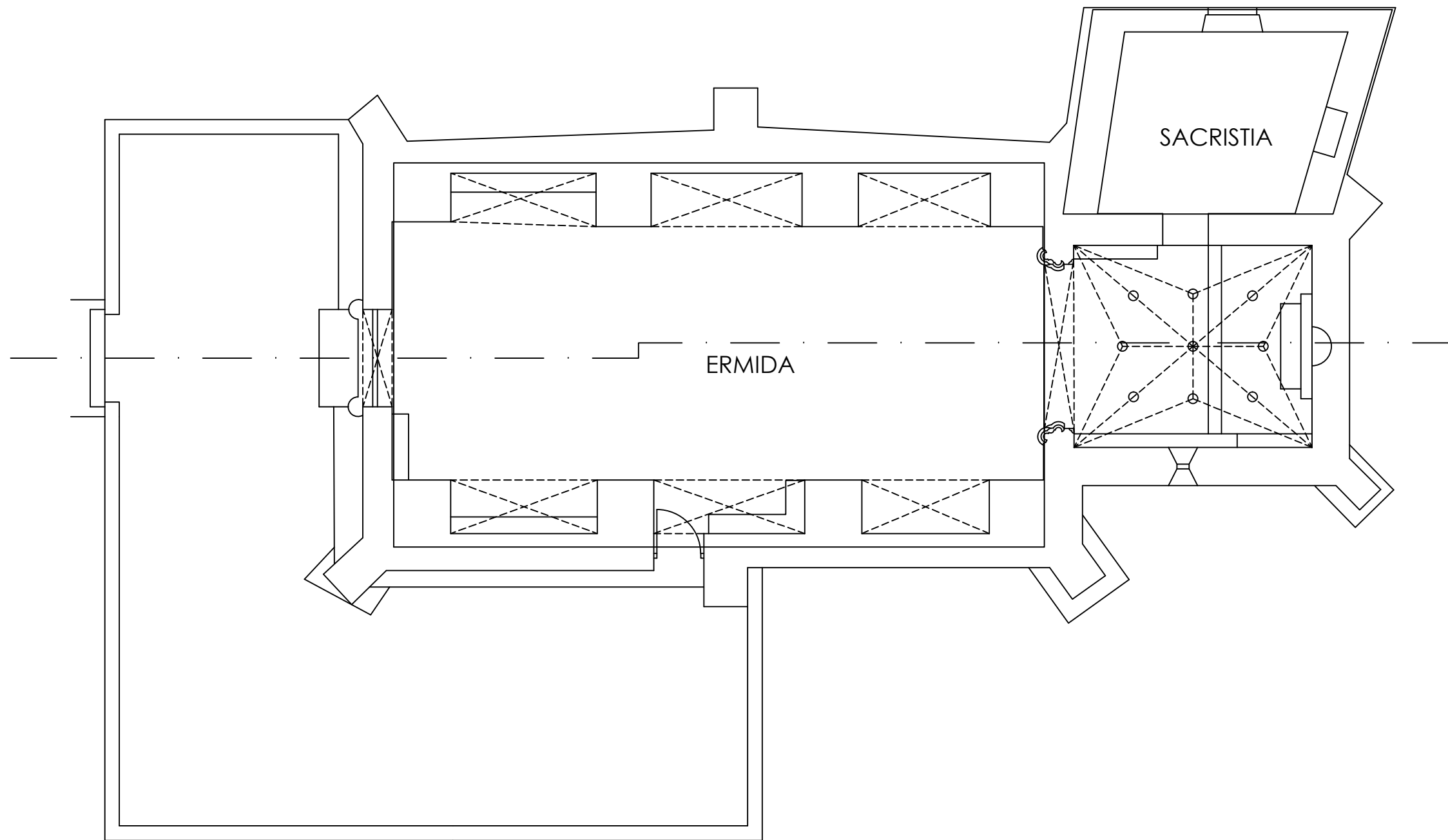
21640

ALÇADO LATERAL ESQUERDO (NORTE)

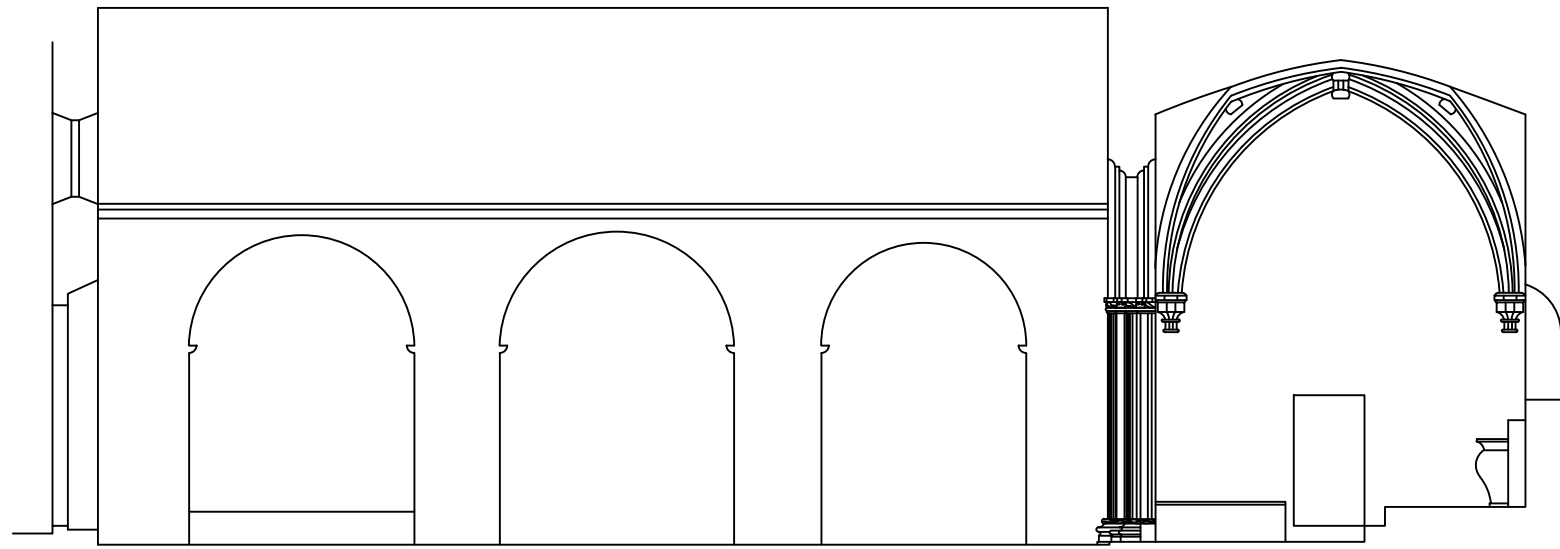


ALÇADO POSTERIOR (NASCENTE)

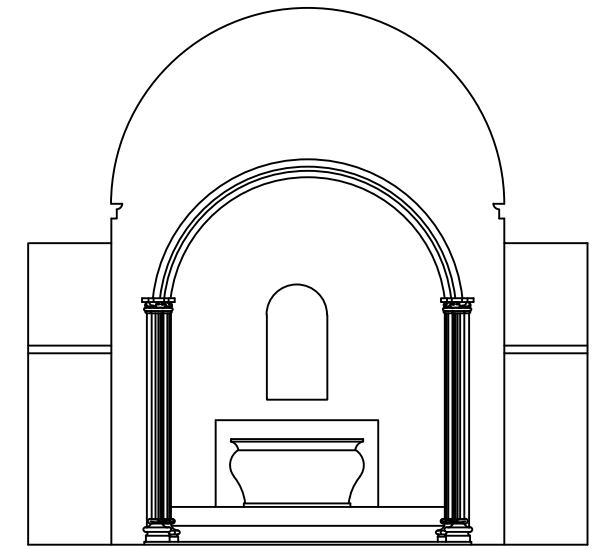
CAPELA DE SANTA CLARA NA VIDIGUEIRA
ESCALA: 1:100



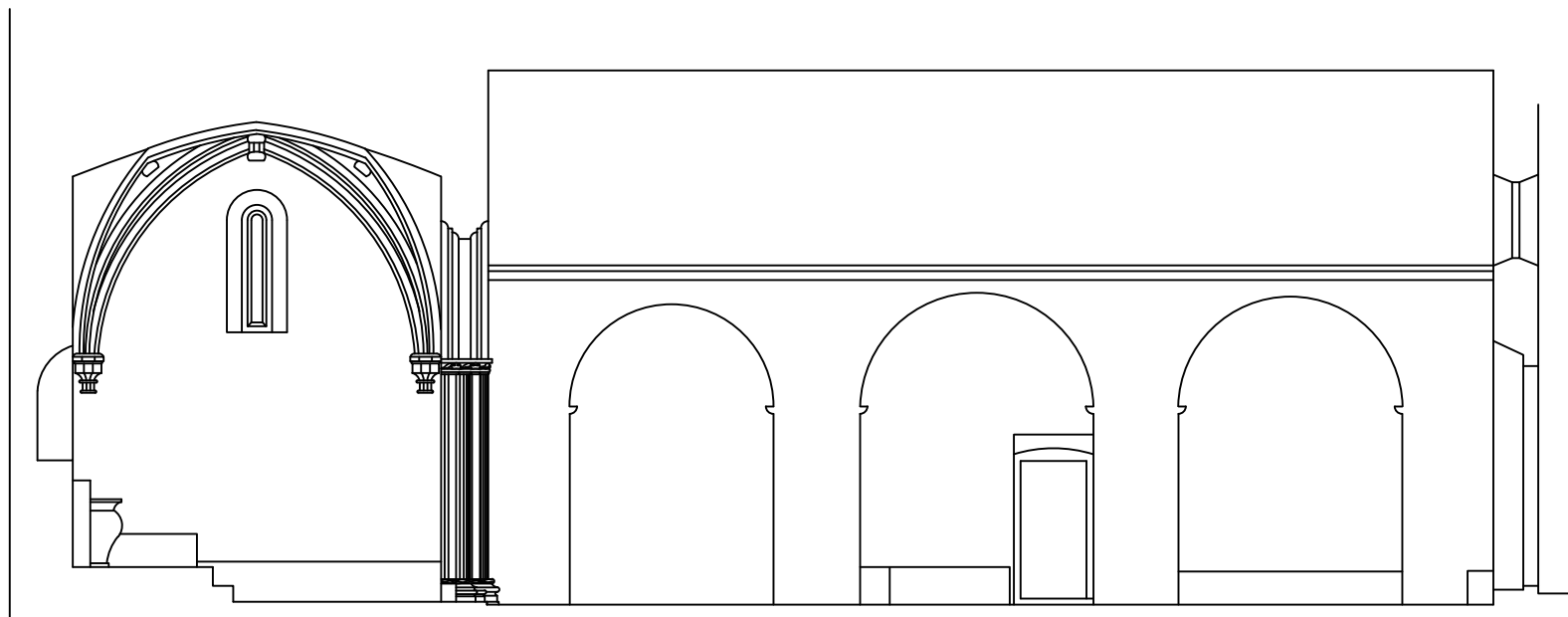
PLANTA



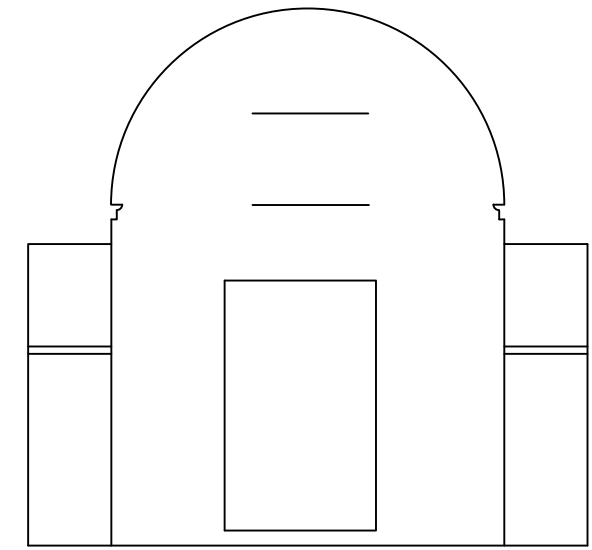
CORTE A:B



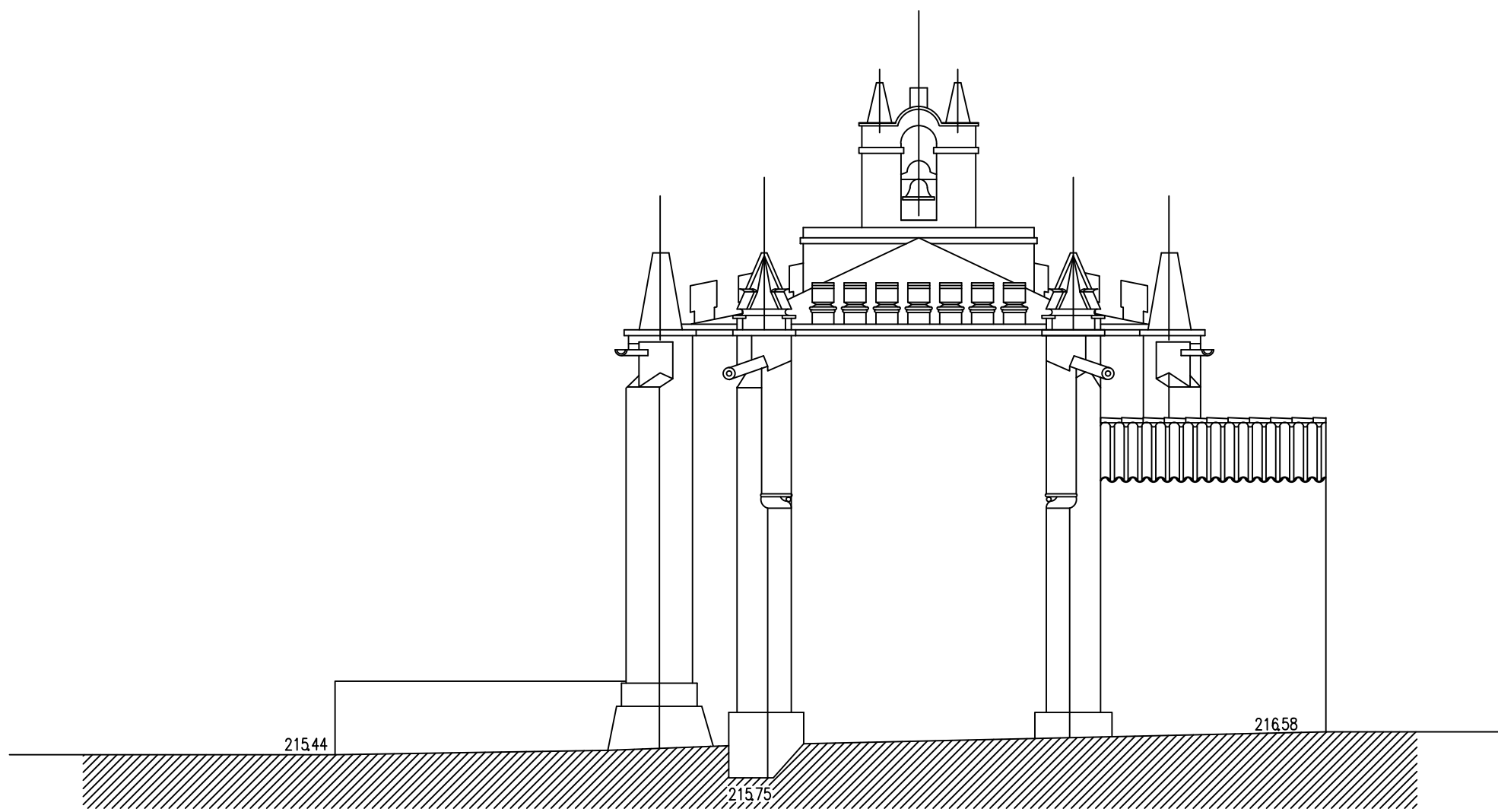
CORTE E:F



CORTE C:D



CORTE G:H



ALÇADO POSTERIOR (ESTE)