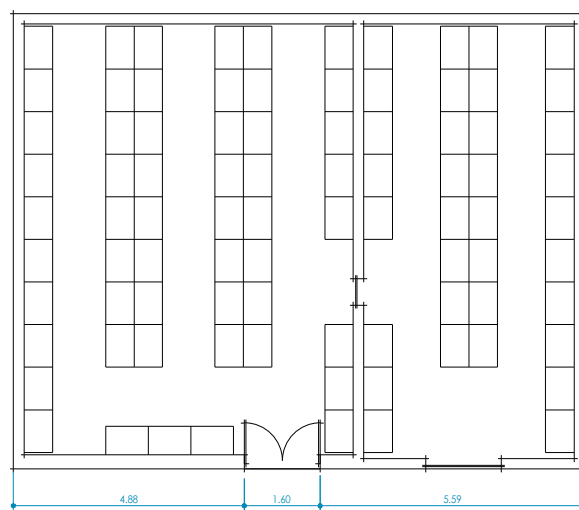
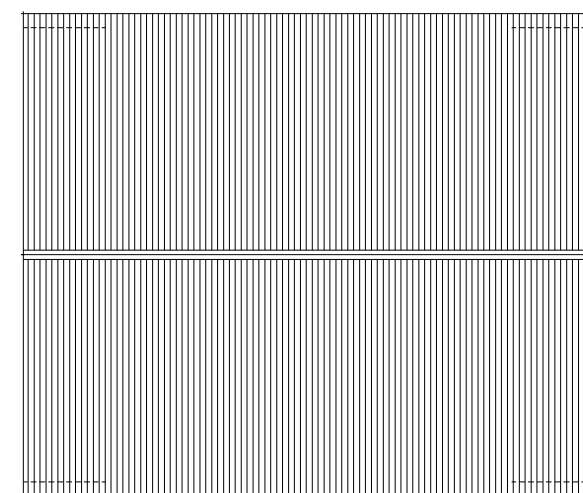


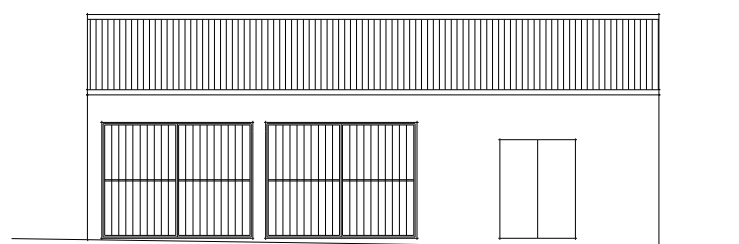
Planta do Piso - Existente



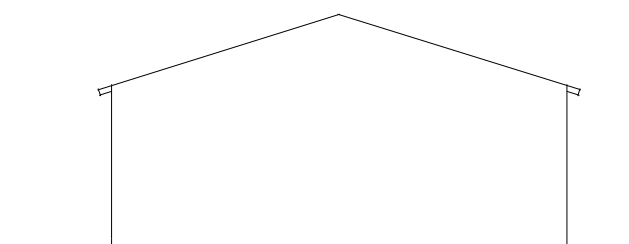
Planta do Piso - Proposto



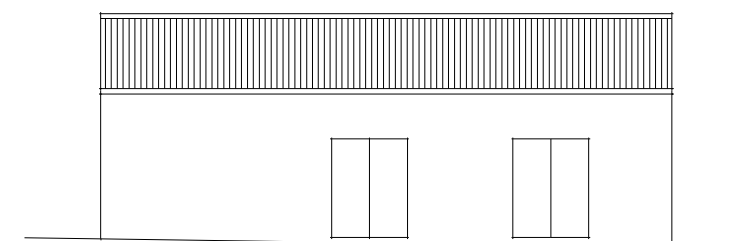
Planta da Cobertura - Existente



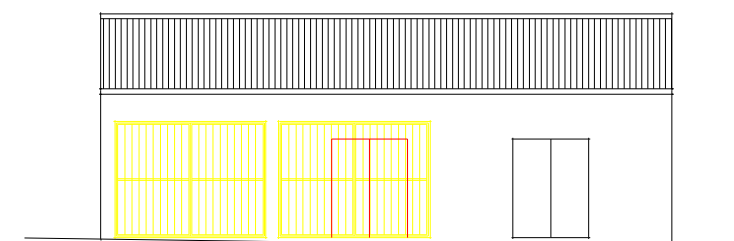
Alçado Frente - Existente



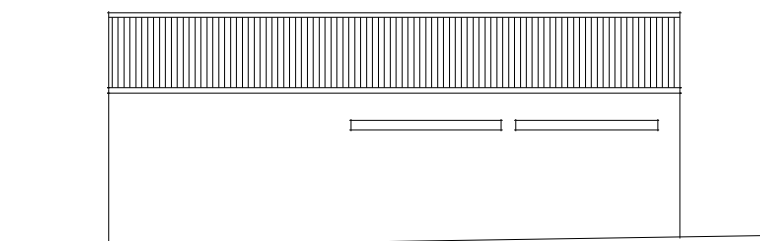
Alçado Lateral Direito - Existente



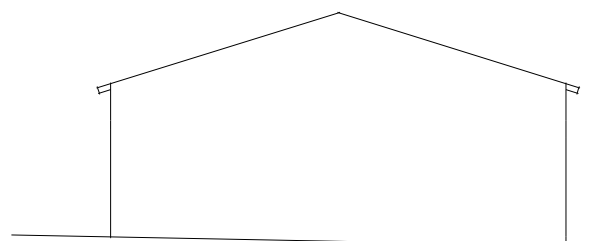
Alçado Frente - Proposto



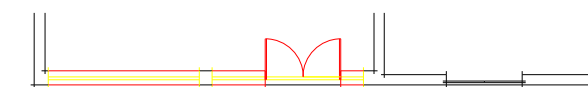
Alçado Frente - Alterações



Alçado Posterior - Existente



Alçado Lateral Esquerdo - Existente



Planta do Piso - Alterações

 MINISTÉRIO DA CULTURA DIRECÇÃO REGIONAL DE CULTURA DO ALENTEJO	EDIFÍCIO MIRÓBRIGA	PROC. N. ARQUIVO
	ESTUDO LEVANTAMENTO DA CASA GRANDE	DESENHO N. 1
PROJECTO	CONTEM	ESCALA 1/100
DESENHOU joão esteves	Plantas e alçados	DATA Mar. 2009