

PROJECTO DE EXECUÇÃO

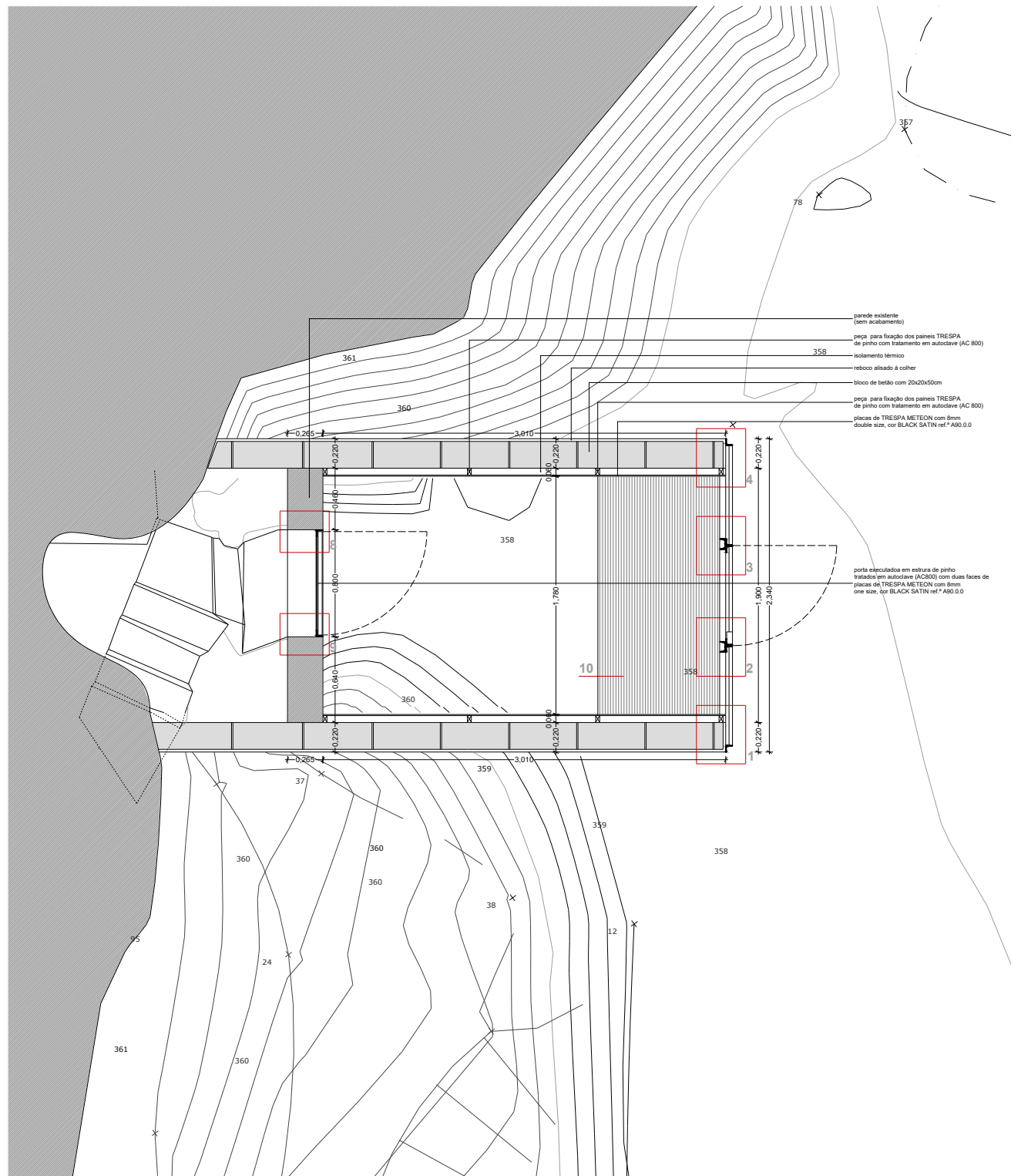
GRUTA DO ESCOURAL
 ANTECÂMARA E ESTRUTURA DE VISITA INTERNA

01

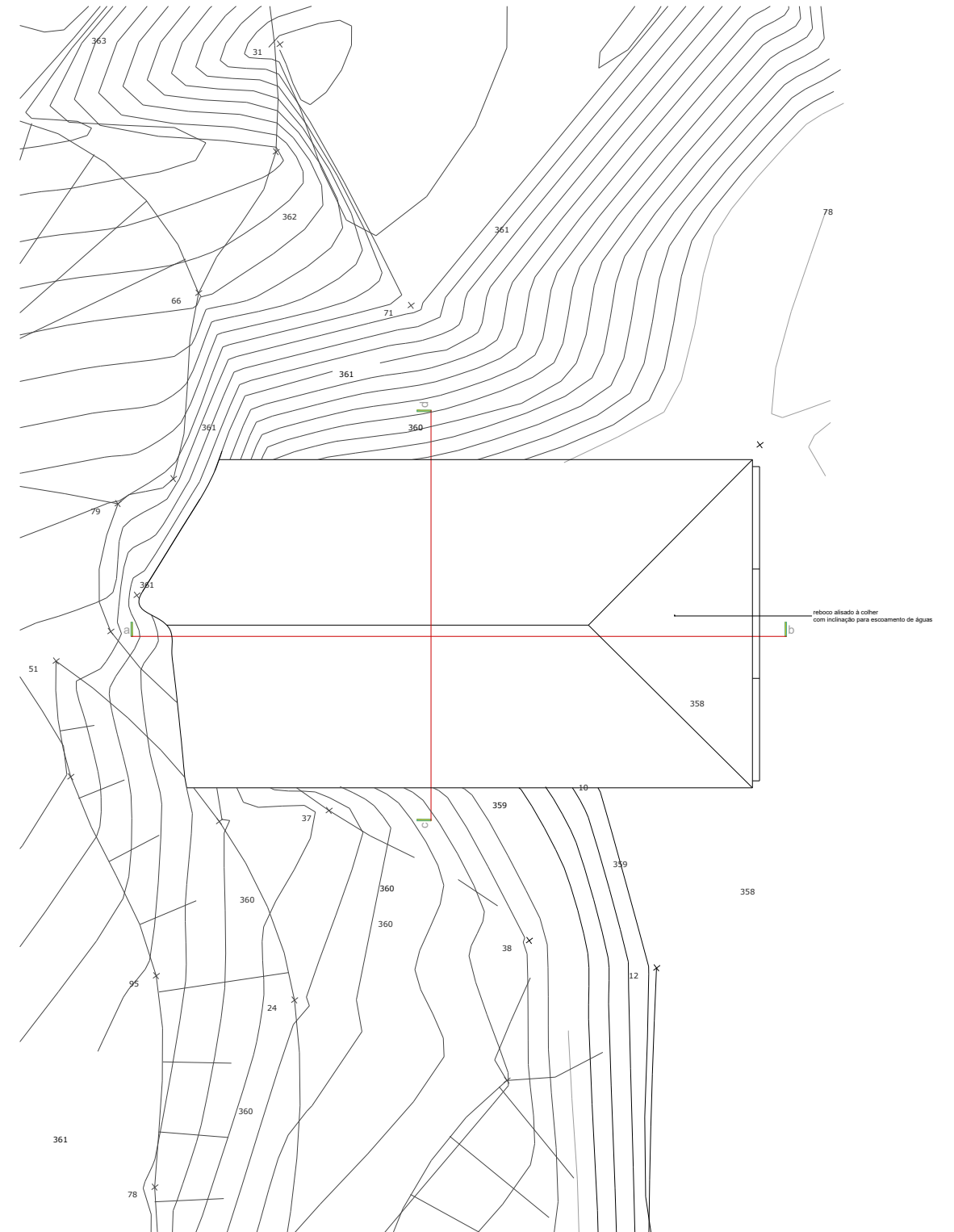
Requerente: Direcção Regional de Cultura do Alentejo, Ministério da Cultura

DNSJ.arq Nuno Simões
 Arq. n.º 2532
 Gonçalo Nicolau

planta de localização



planta



planta de coberturas



GRUTA DO ESCOURAL
 ANTECÂMARA E ESTRUTURA DE VISITA INTERNA

Requerente: Direcção Regional de Cultura do Alentejo, Ministério da Cultura

DNSJ.arq

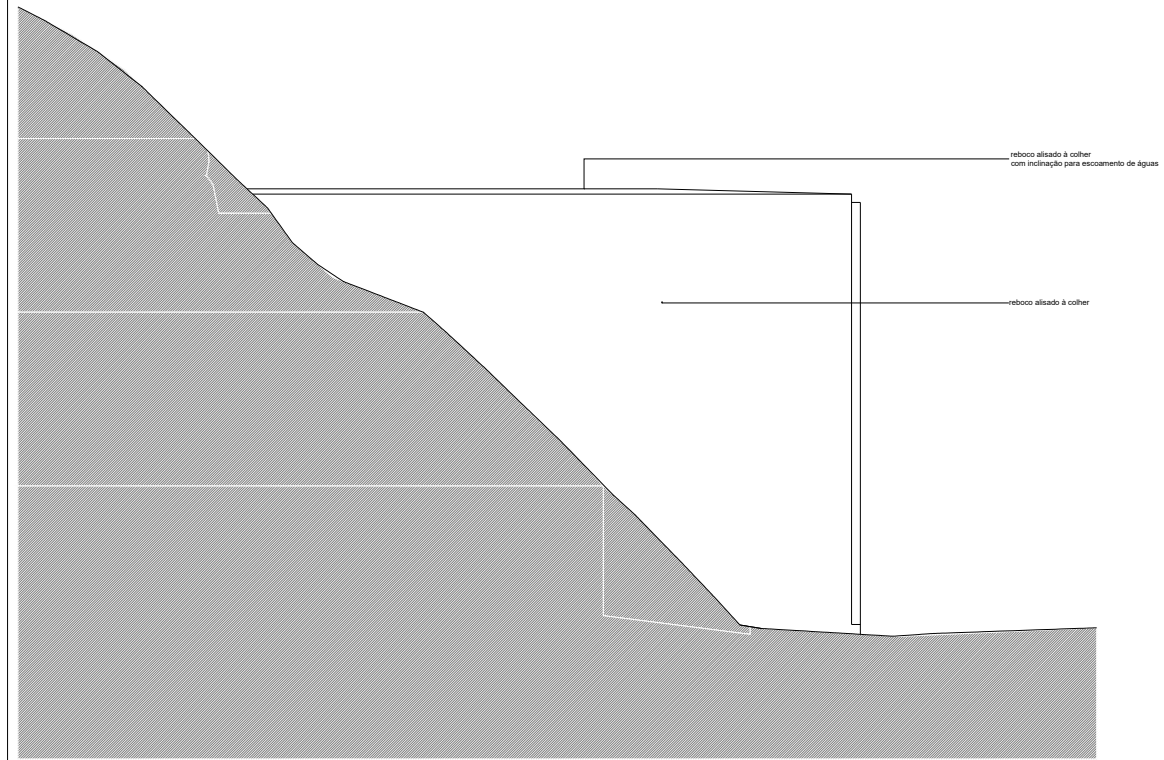
Nuno Simões
 Arq. Inf. n.º 2532

Gonçalo Nicolau

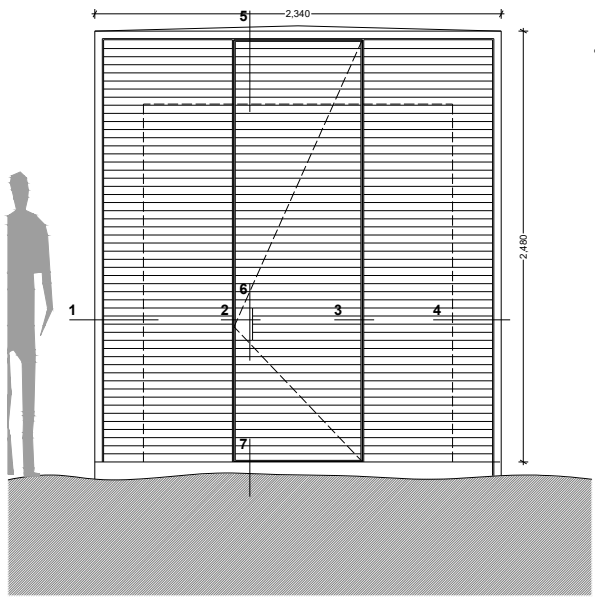
Rua Teixeira de Passos nº 21 9º 1700-364 Lisboa tel/fax: 218495555 mail: dnsj.arq@gmail.com

Antecâmara
 plantas

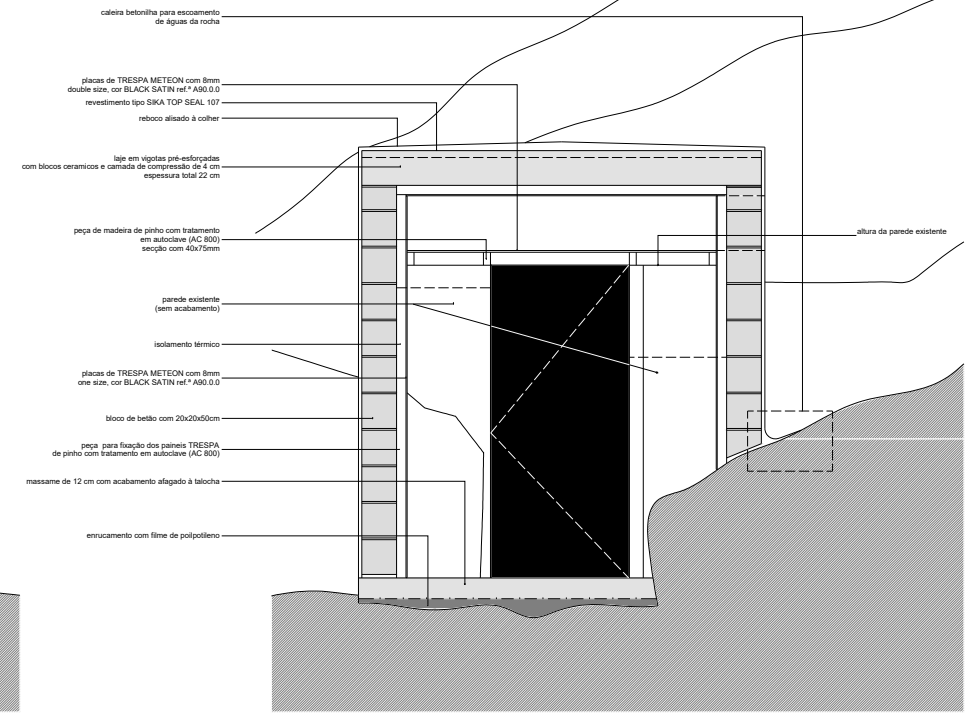
esc. 1/20



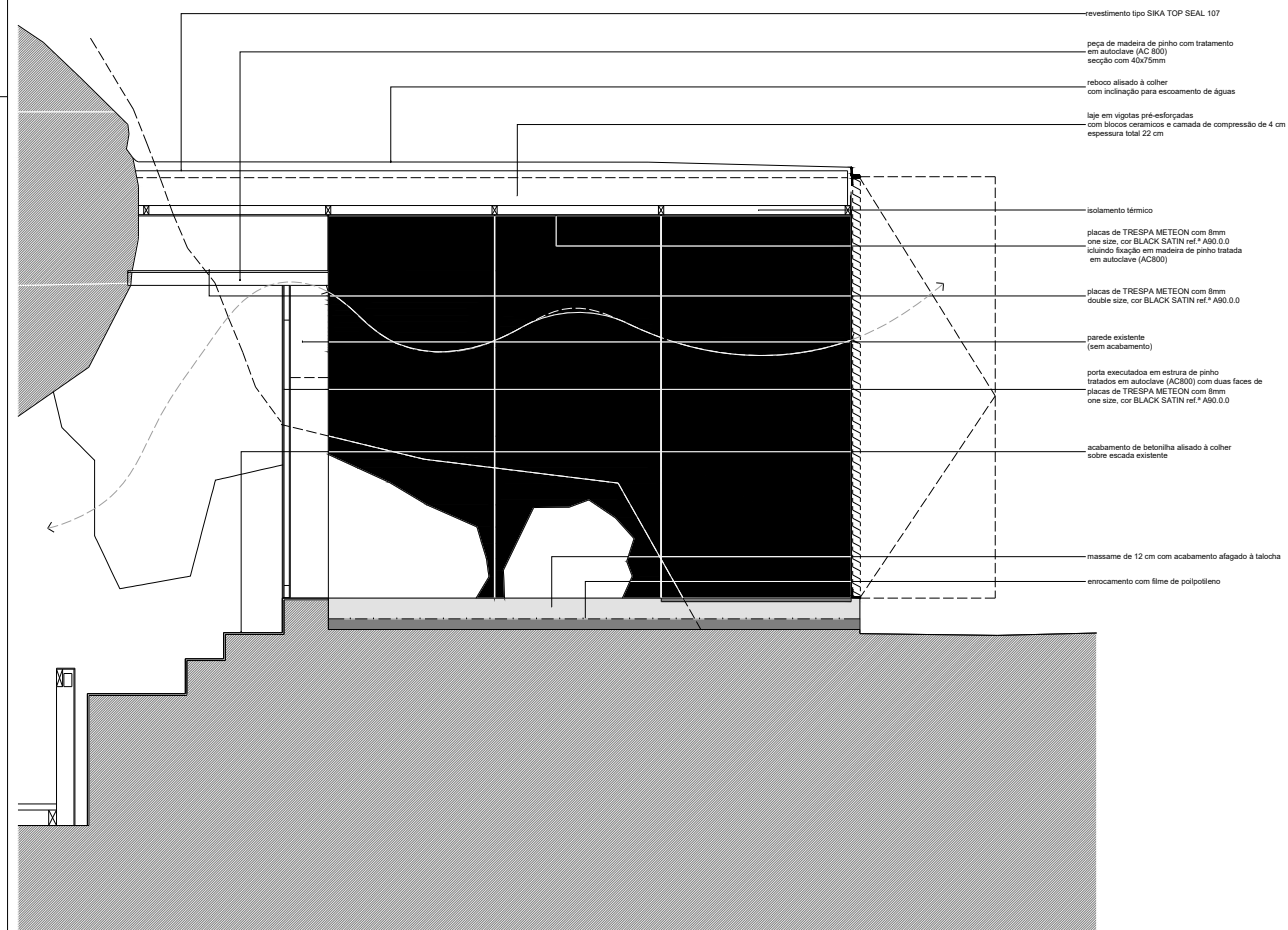
alçado norte



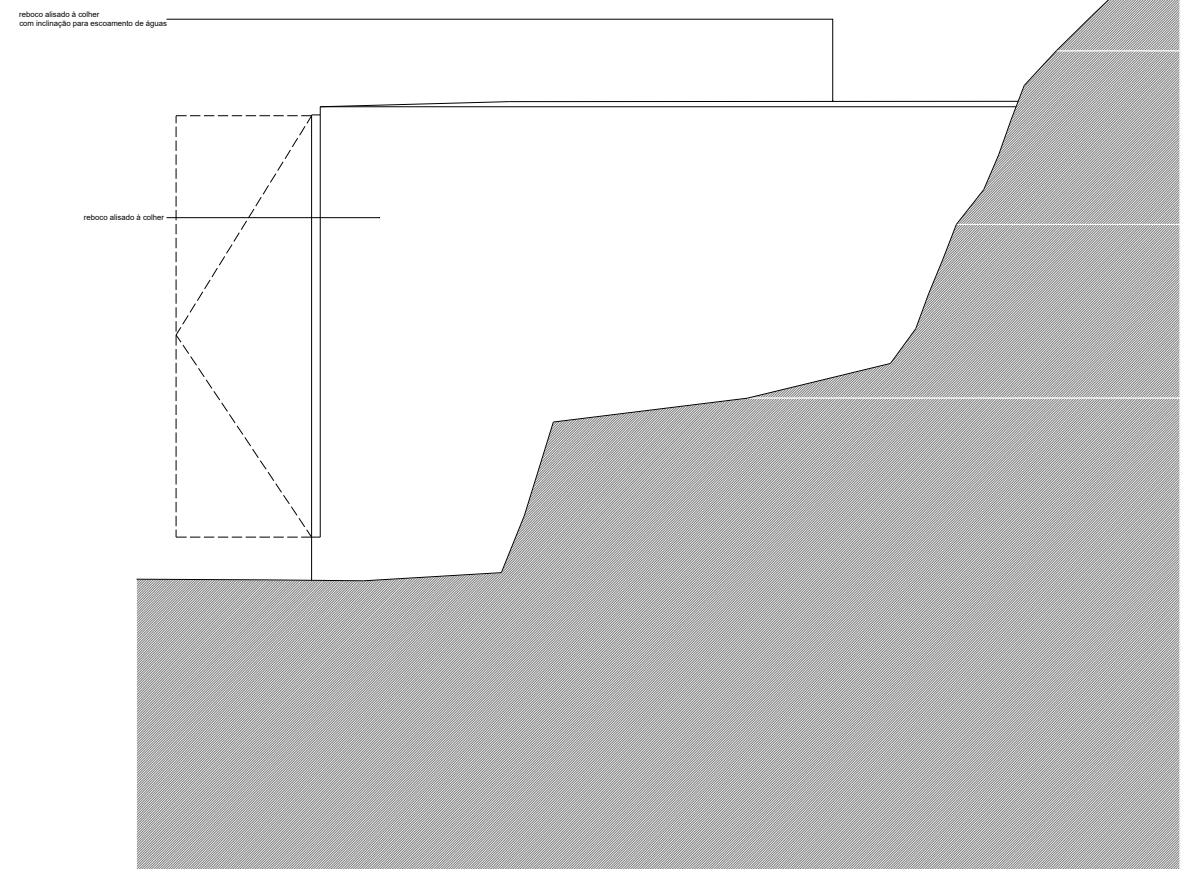
alçado oeste



corte CD

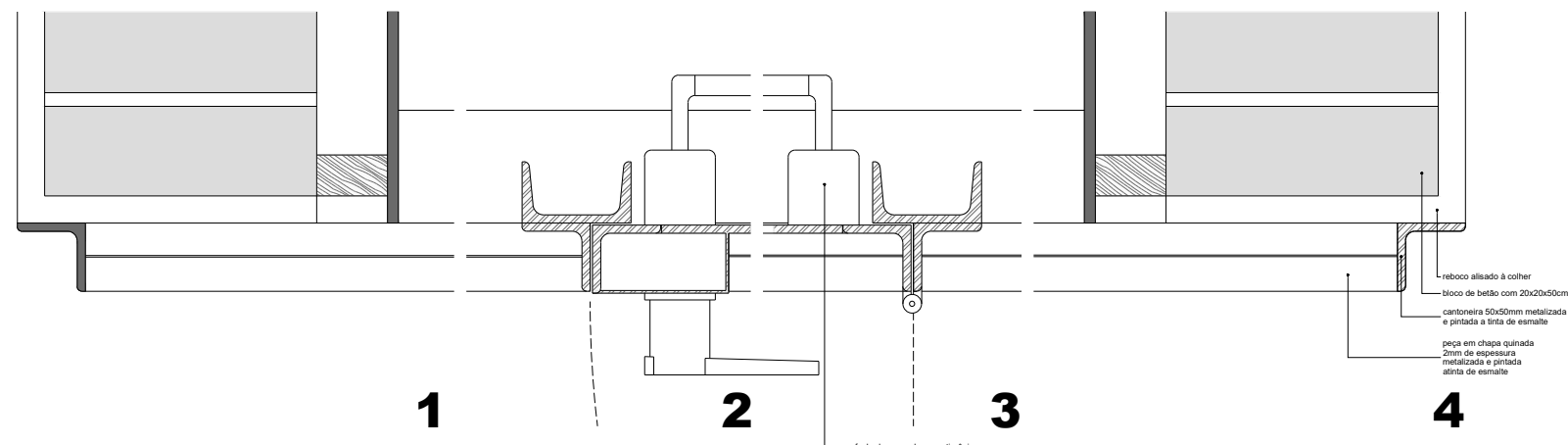


corte AB



alçado sul

Pormenor da grelha com porta de entrada na antecâmara

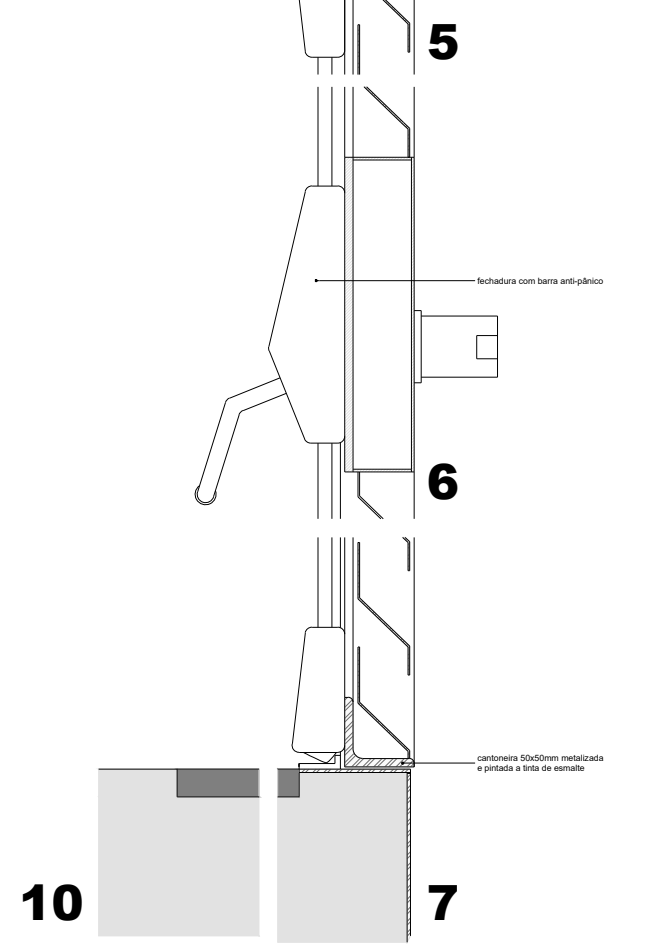
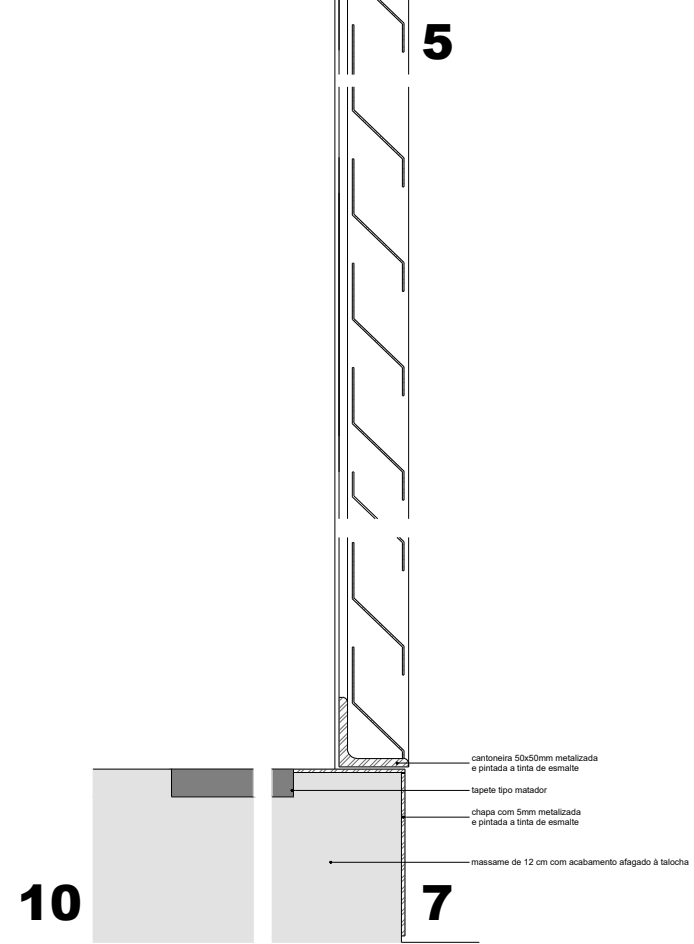
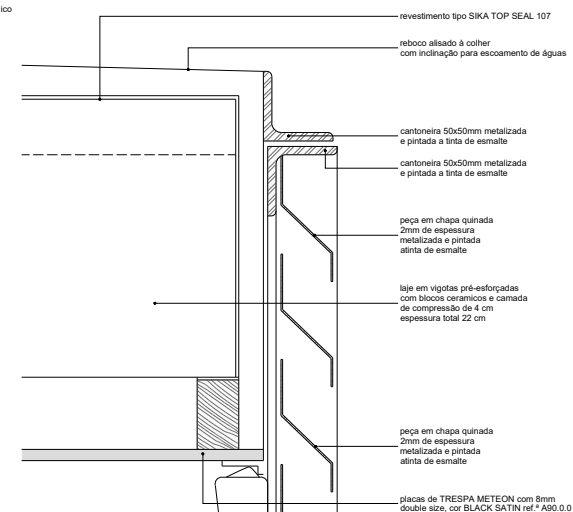
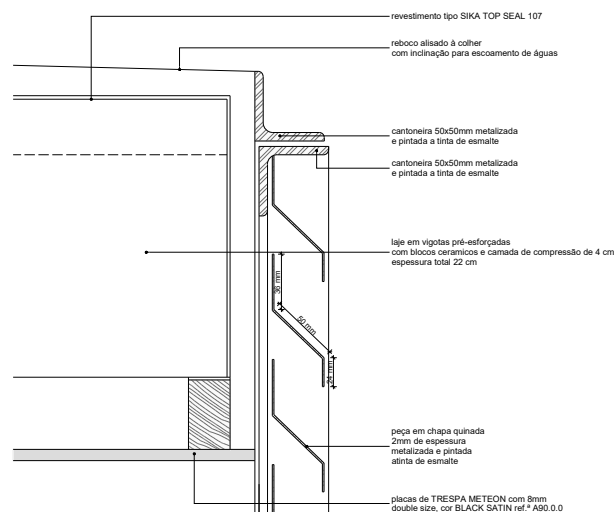
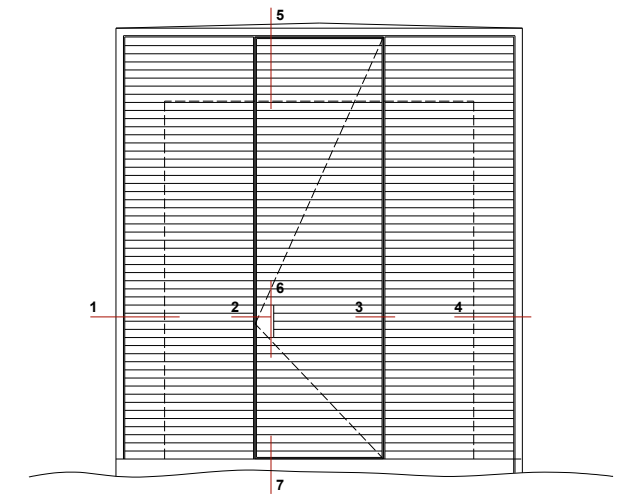


ARO
- em perfis metálicos metalizados e pintados a tinta de esmalte.

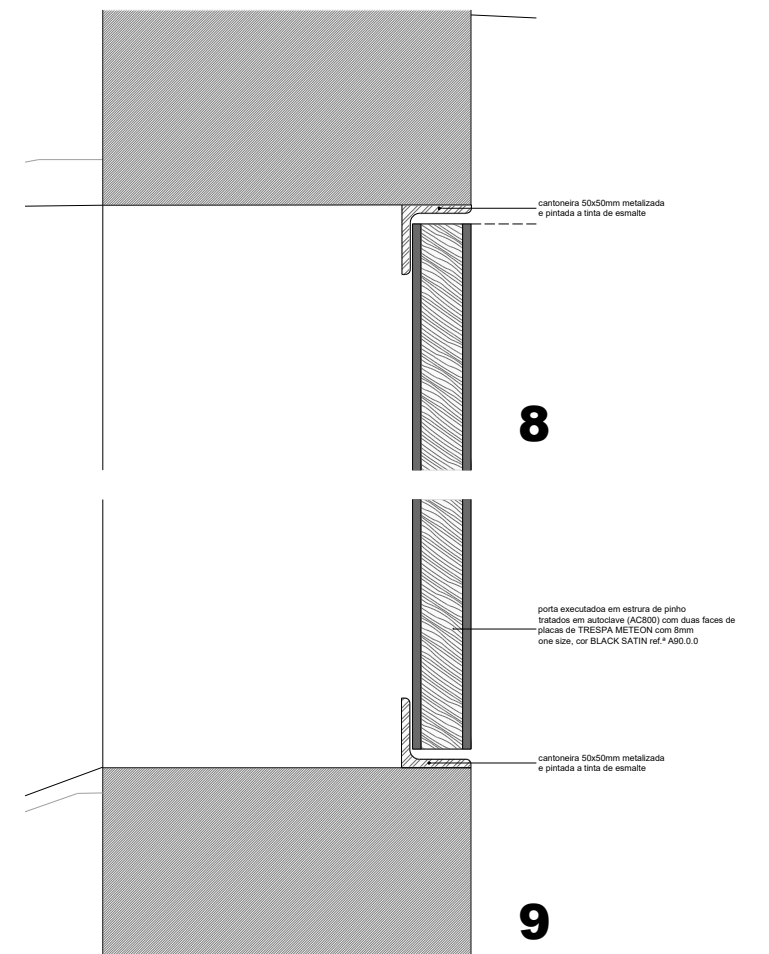
FOLHA
- estrutura em perfis metálicos preenchidos com lâmina de chapa quinada, metalizado e pintado a tinta de esmalte.

- dobradiças e corredeiras executadas em peças metálicas metalizadas pintadas a tinta de esmalte.

- fechadura tipo "Hebelzylinder, Cam lock, Serrure batteuse, Type 225-08-1" ou equivalente montada em caixa executada em chapa com puxador em varão de ferro metalizado e pintado a tinta de esmalte.



Pormenor da porta de entrada na gruta



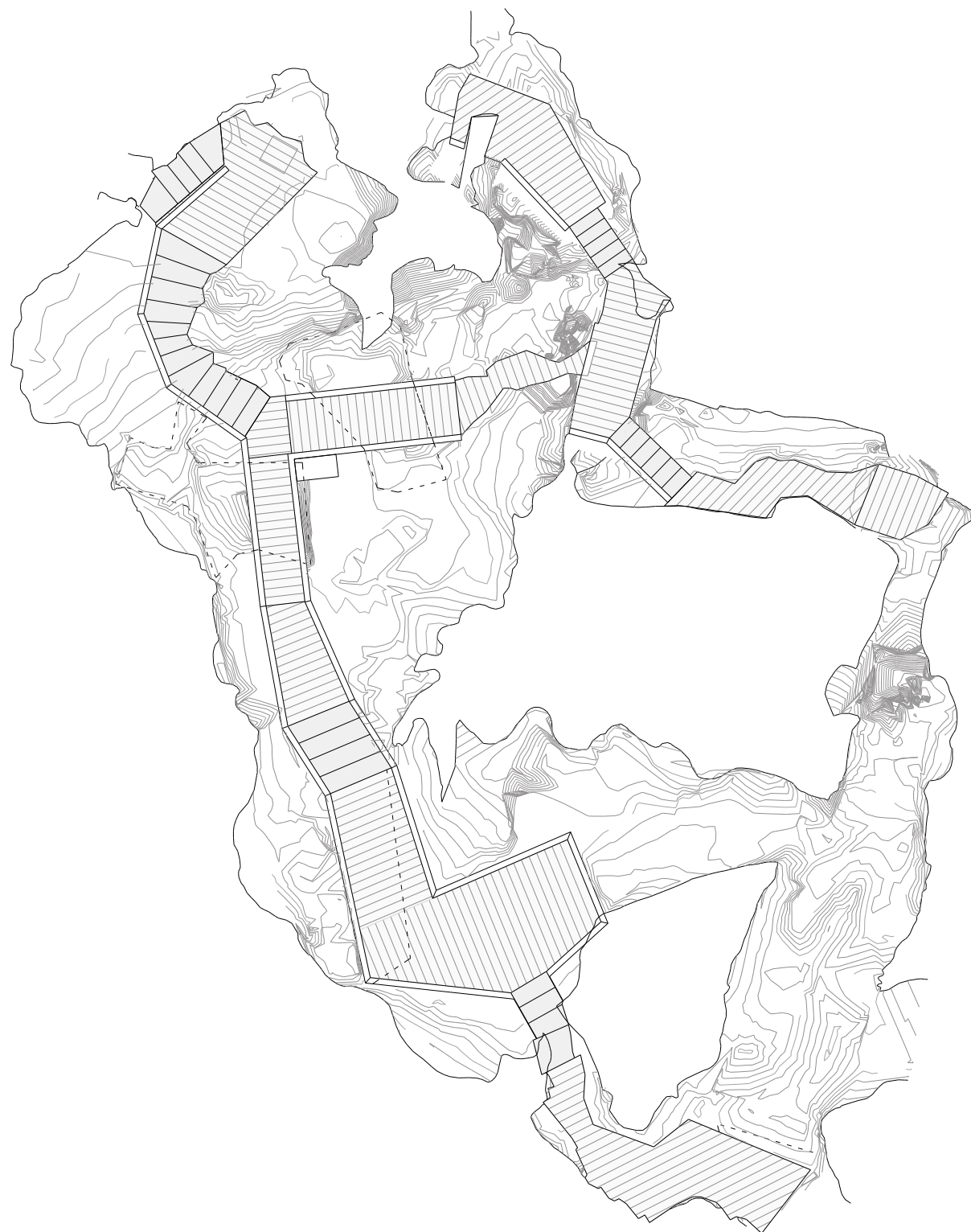
PLANTA DO LEVANTAMENTO



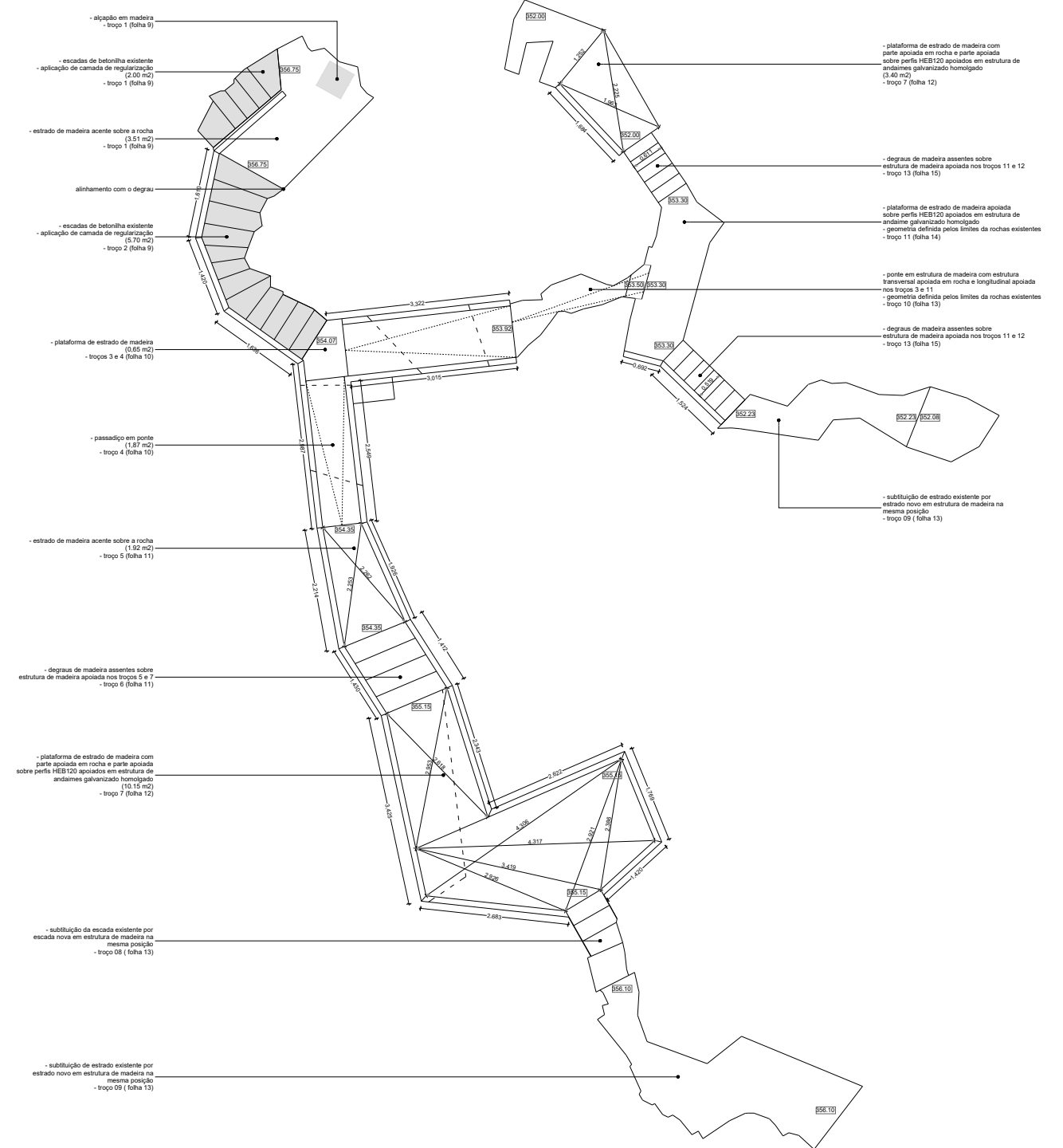
PLANTA DE ALTERAÇÕES



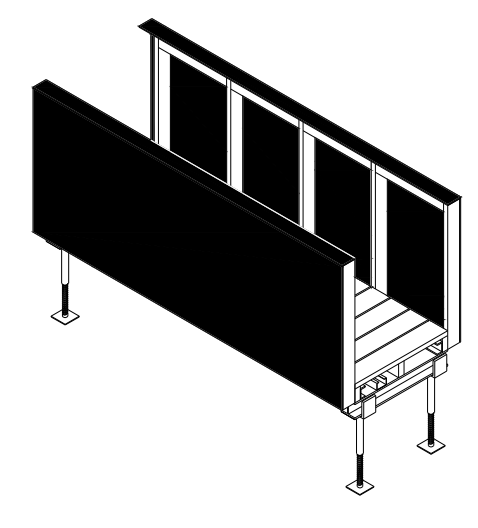
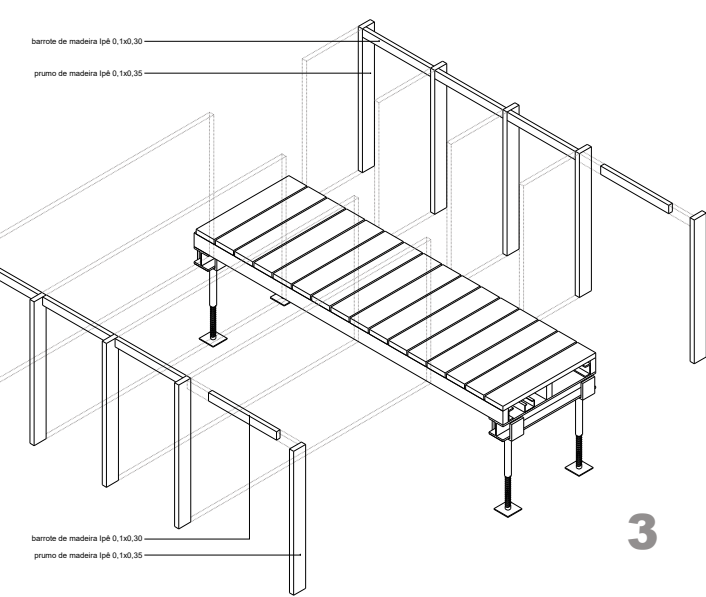
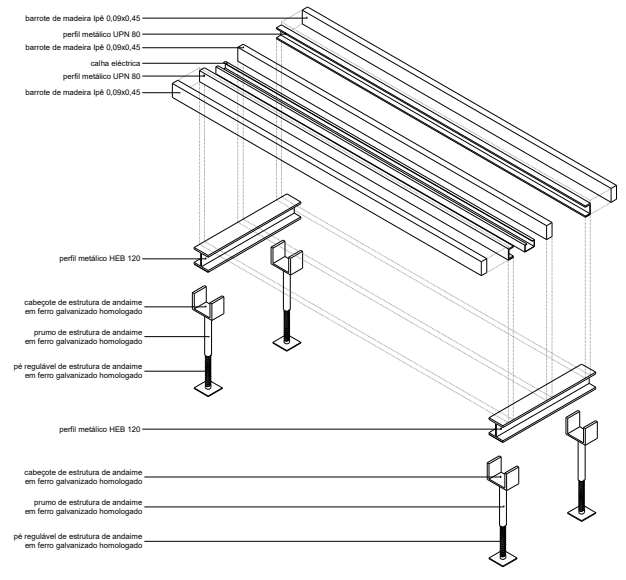
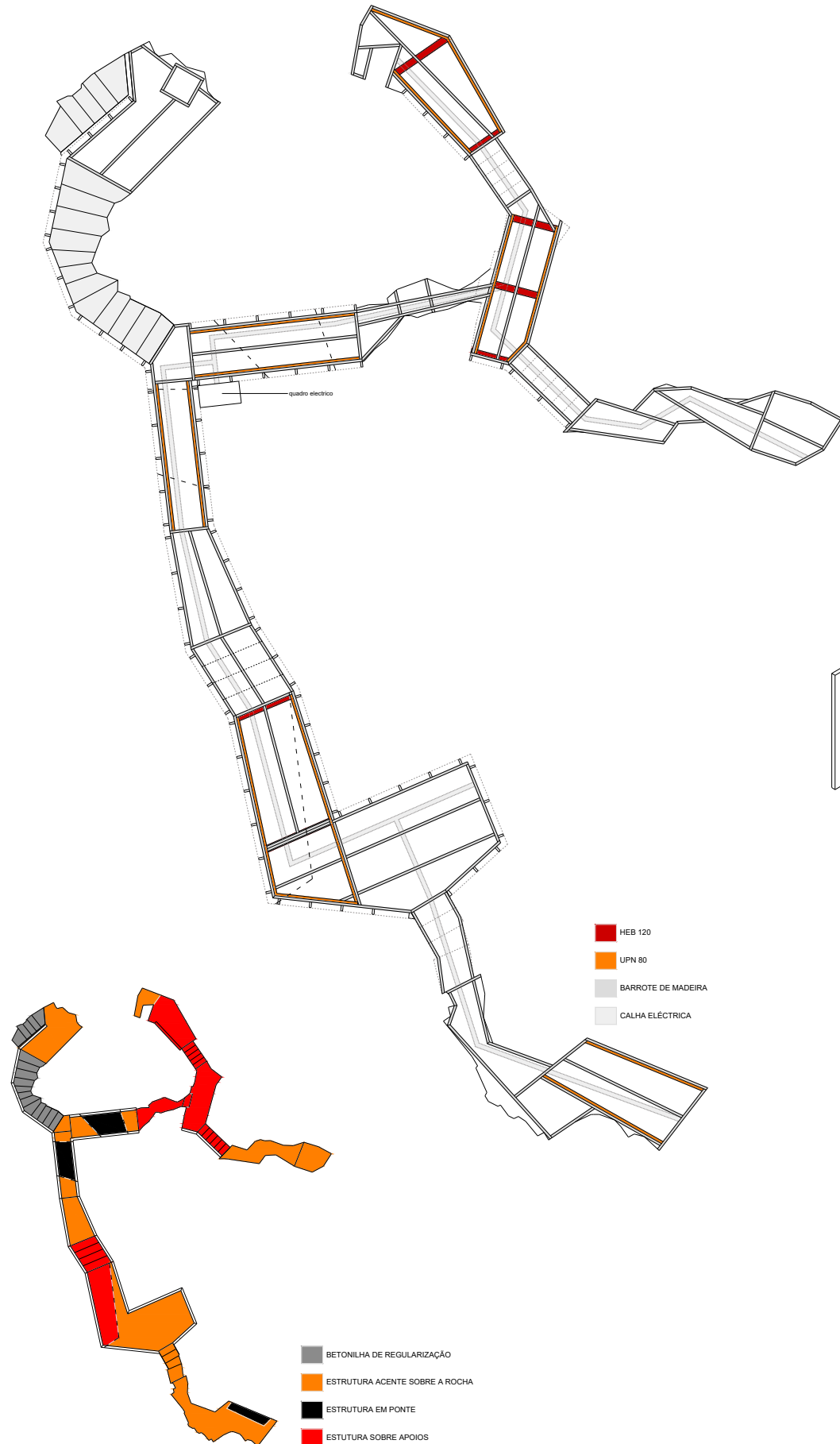
PLANTA GERAL



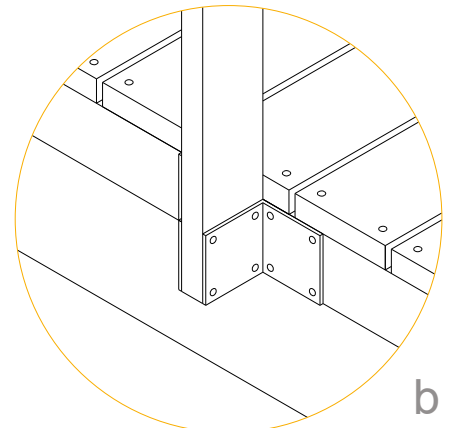
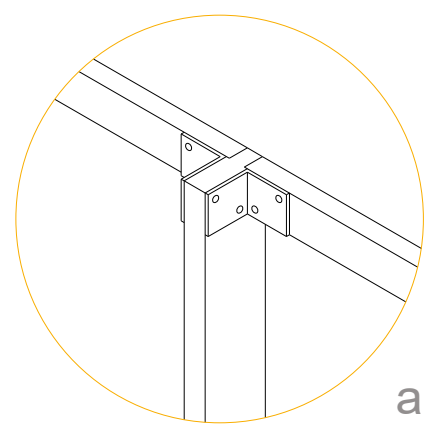
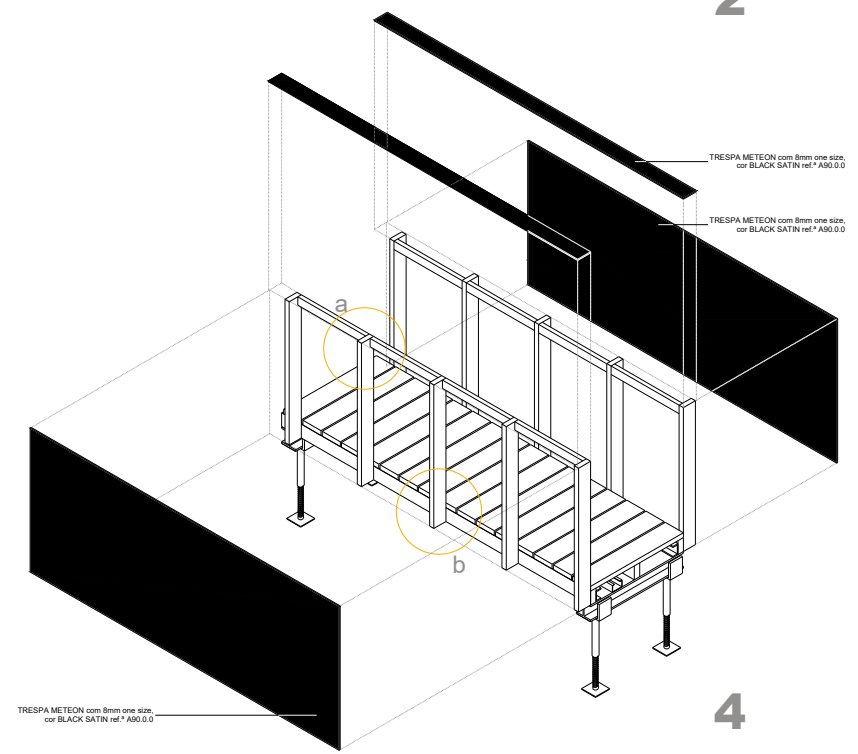
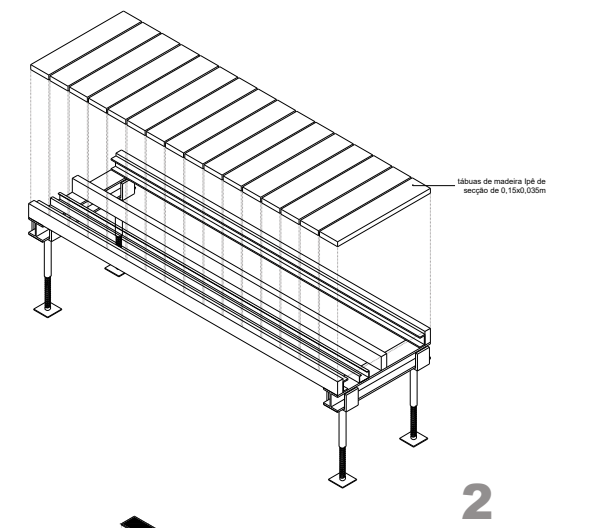
ESQUEMA DAS ESTRUTURAS DE VISITA



ESQUEMA DE ESTRUTURA



ESQUEMAS DE MONTAGEM

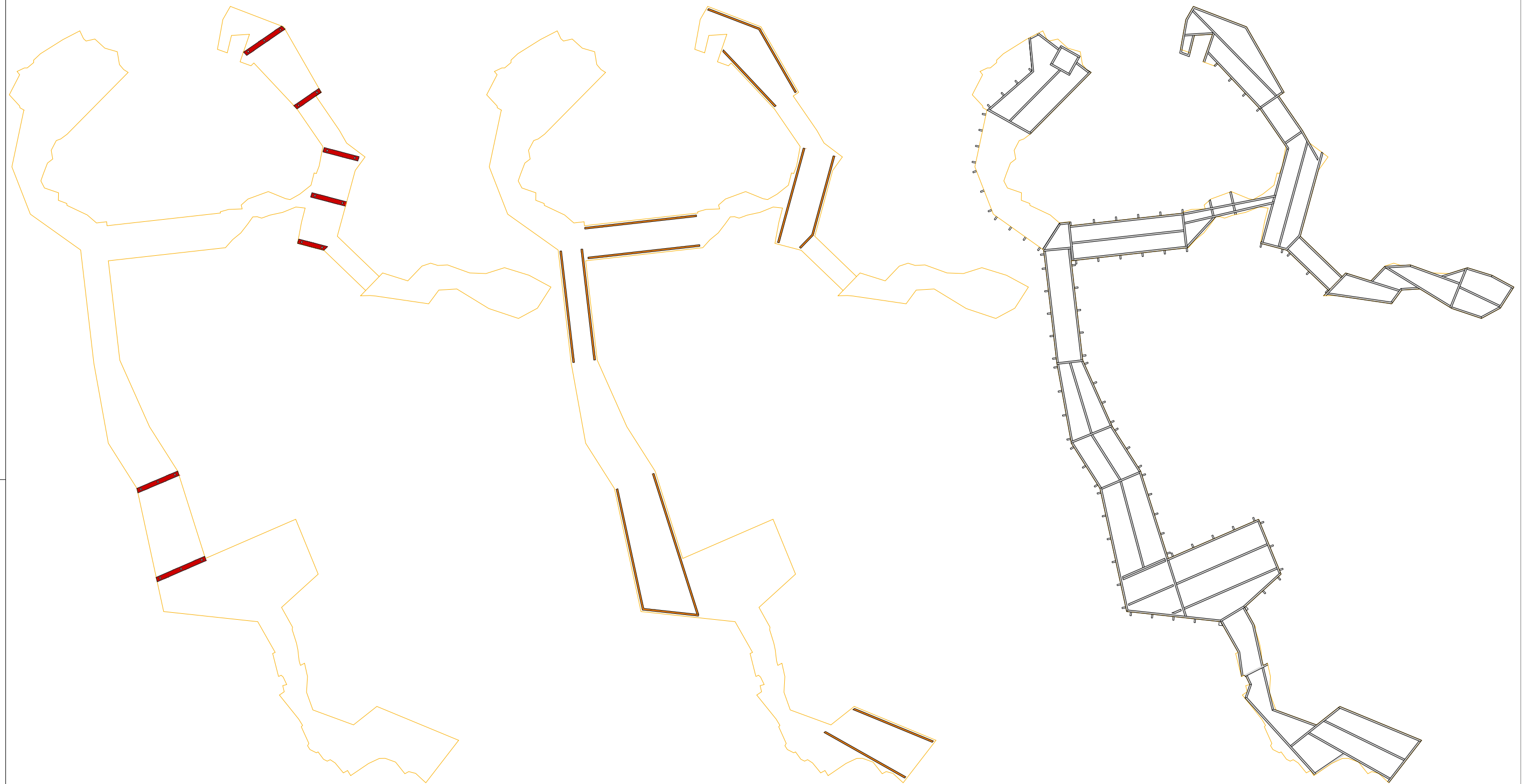


NOTA: Os elementos de madeira são fixos entre si por peças de aço inoxidável em cantoneira e aparafusadas com parafusos de aço inoxidável.

HEB 120

UPN80

BARROTE MADEIRA 9X4,5 cm



- Perfis HEB 120 metalizados e pintados, apoiados em estrutura de andaime galvanizado homologado

- Perfis UPN 80 metalizados e pintados aparafusado ao perfil HEB 120

- Barrotes de madeira de Ipé (*Tabebuia spp*) com 9x4,5cm

PROJECTO DE EXECUÇÃO

GRUTA DO ESCOURAL
ANTECÂMARA E ESTRUTURA DE VISITA INTERNA

08

Requerente: Direcção Regional de Cultura do Alentejo, Ministério da Cultura

DNSJ.arq

Nuno Simões
Arq. Esc. n.º 2532
Gonçalo Nicolau

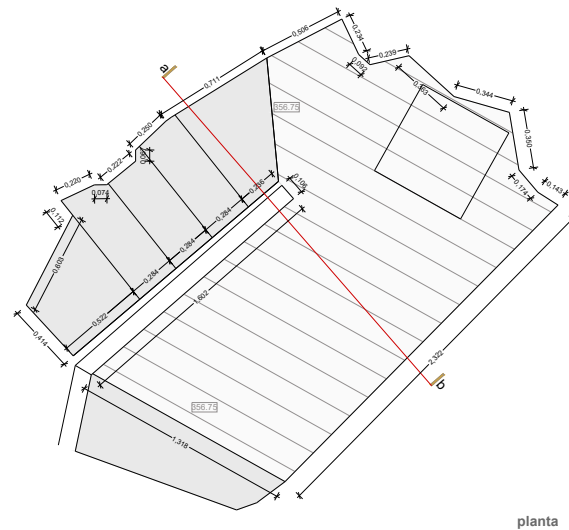
planta dos elementos estruturais

Rua Teixeira de Pascoais nº 21 8º 1700-364 Lisboa tel/fax: 218485555 mail: dnsj.arq@gmail.com

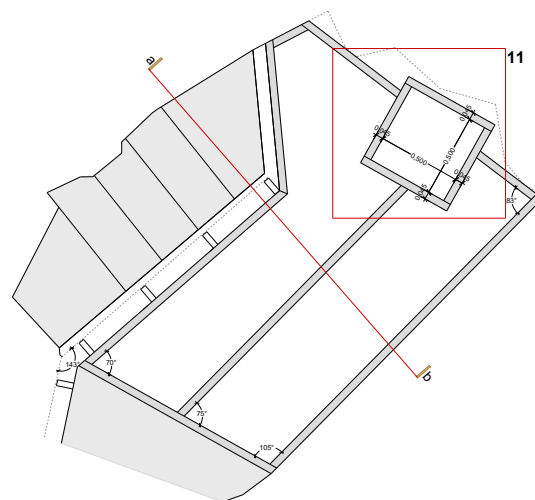
esc. 1/50

Junho 2008

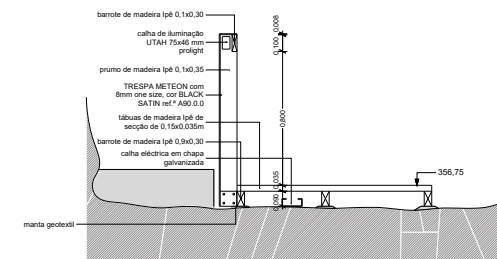
troço 1



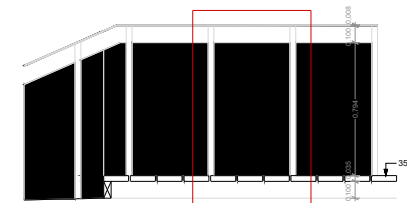
planta



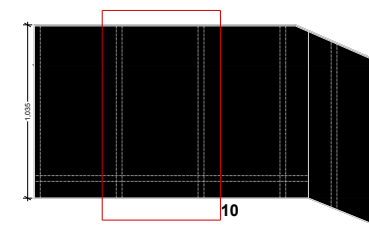
esquema de estrutura



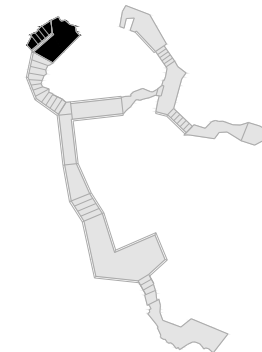
corte ab



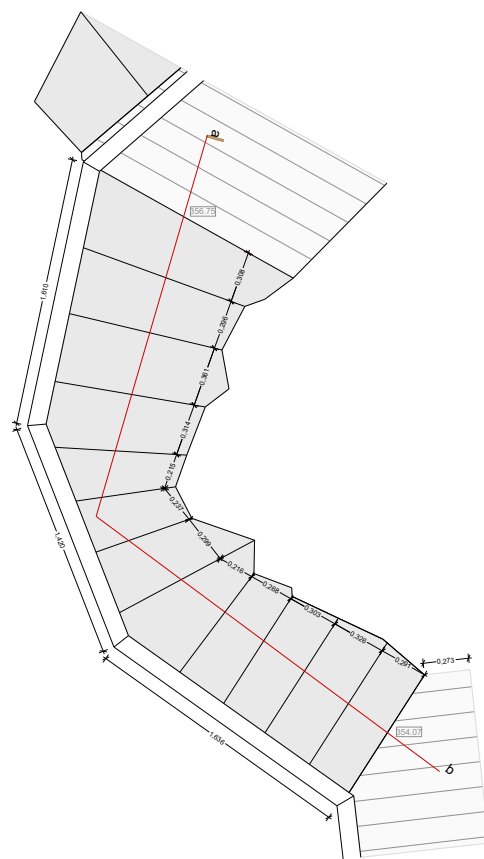
vista interior da guarda



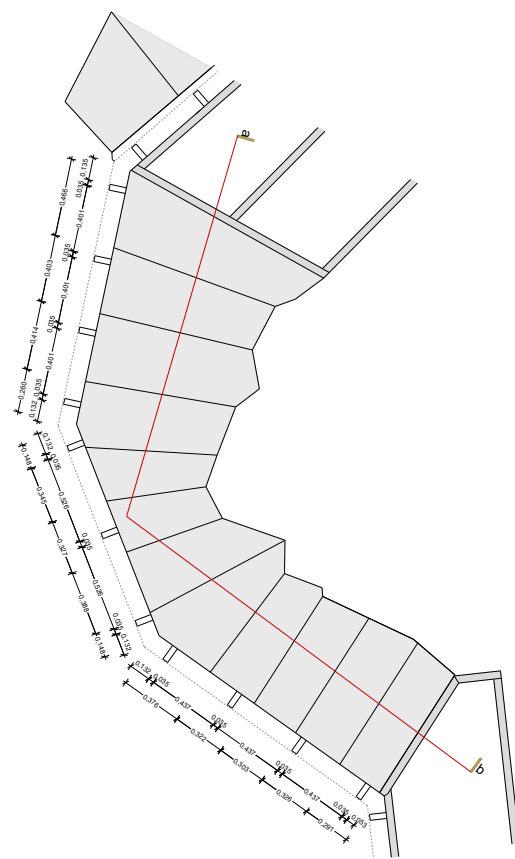
vista exterior da guarda



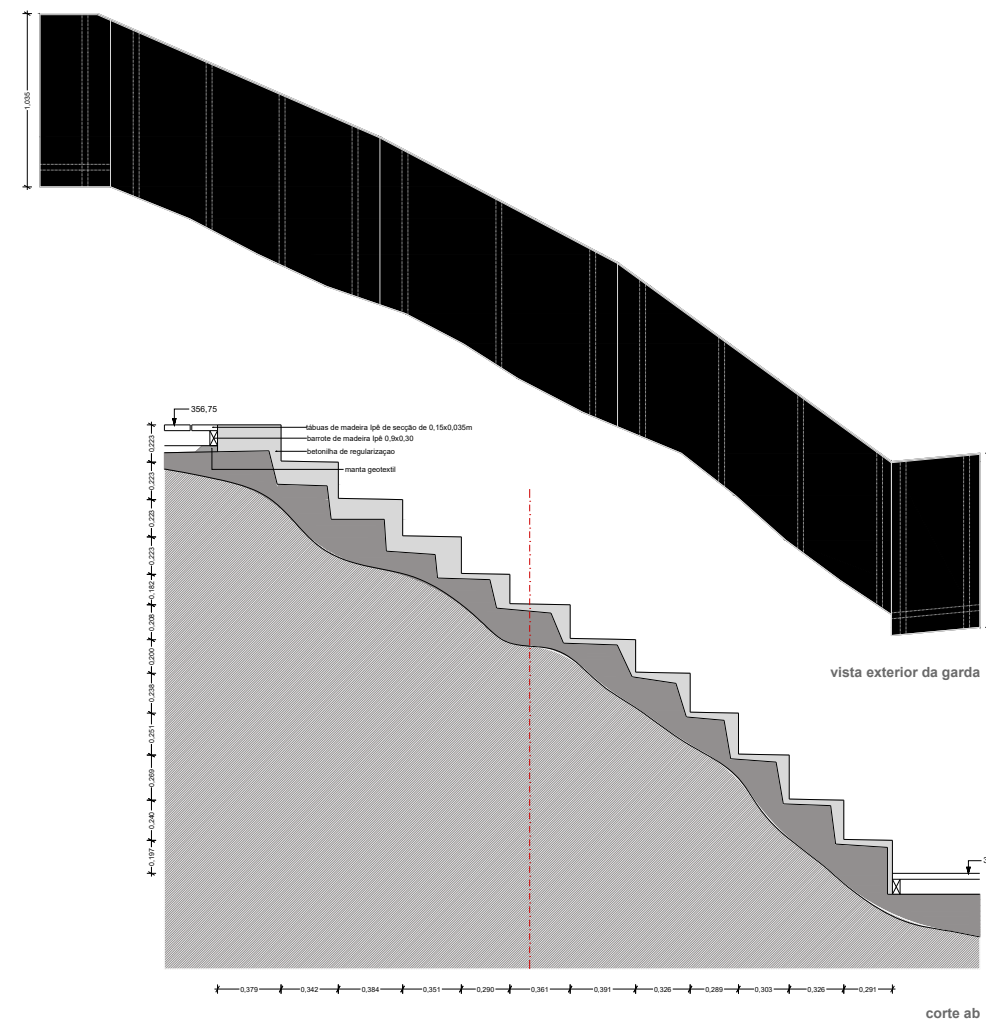
troço 2



planta

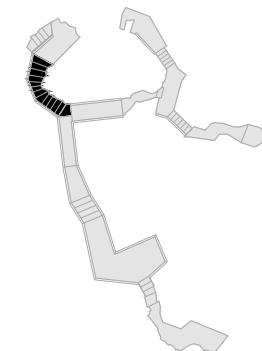


esquema de estrutura

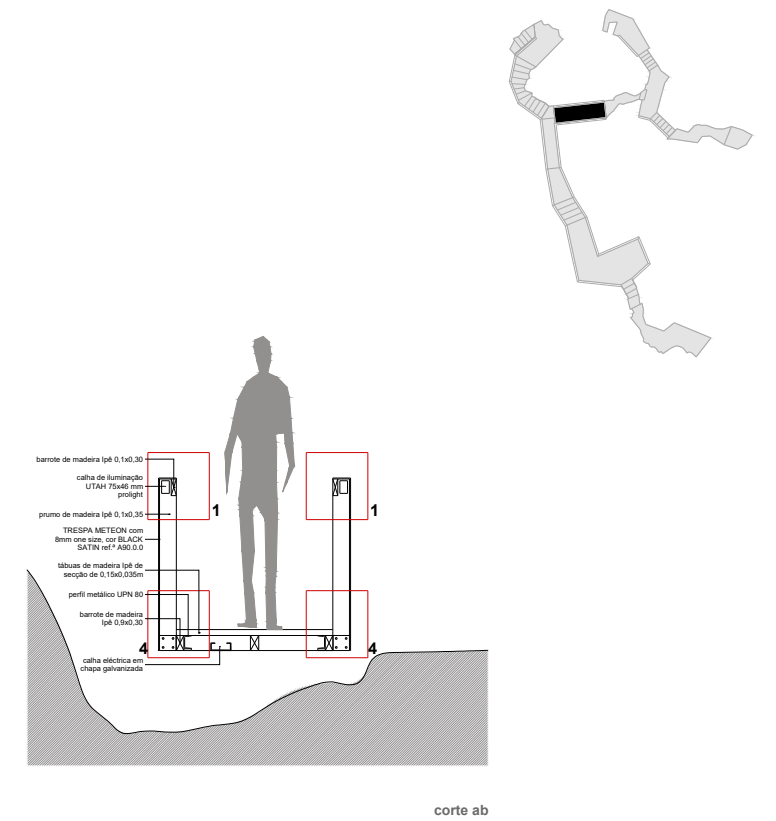
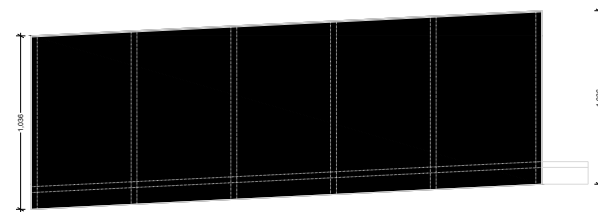
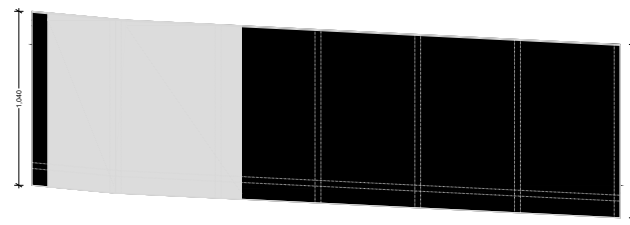
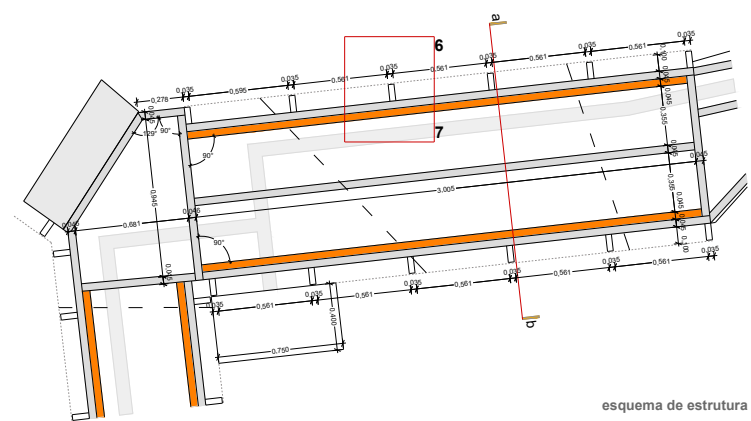
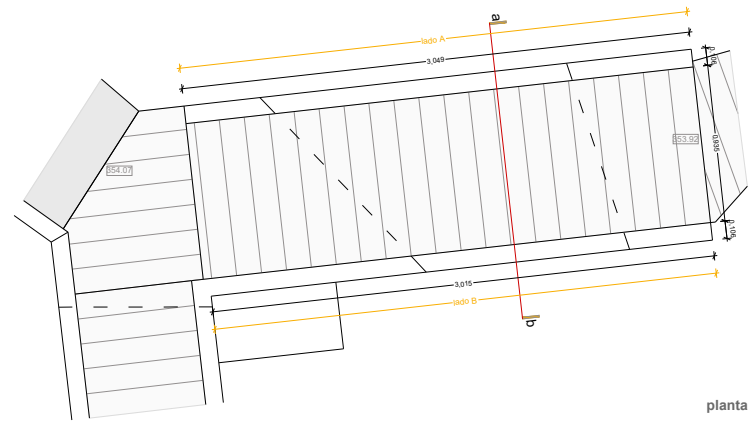


vista exterior da guarda

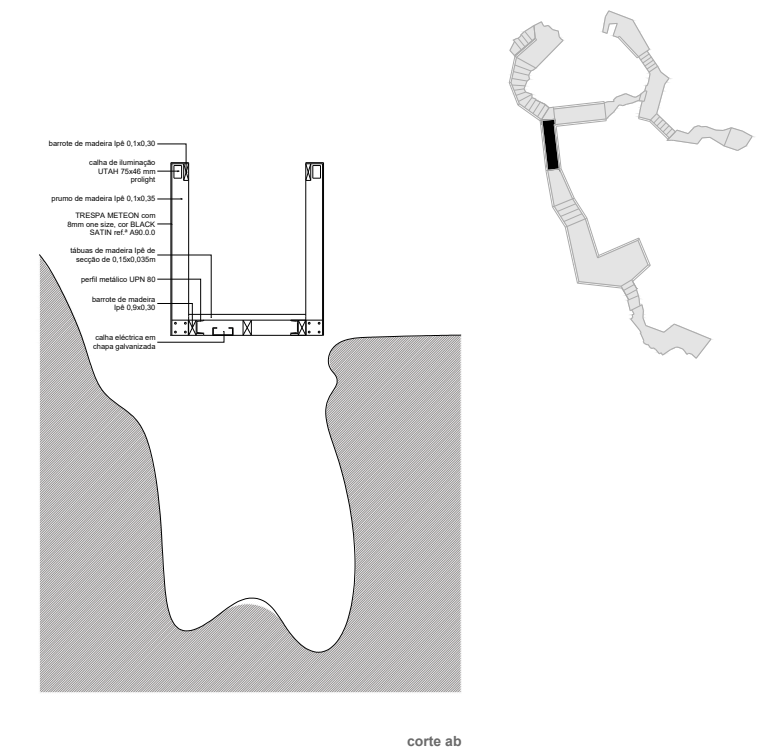
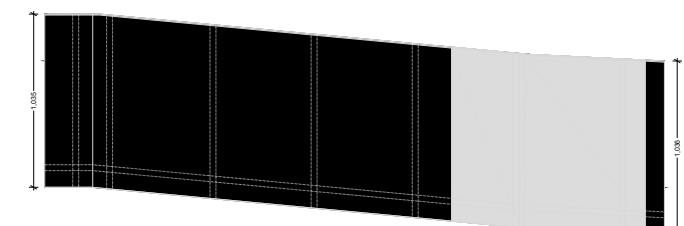
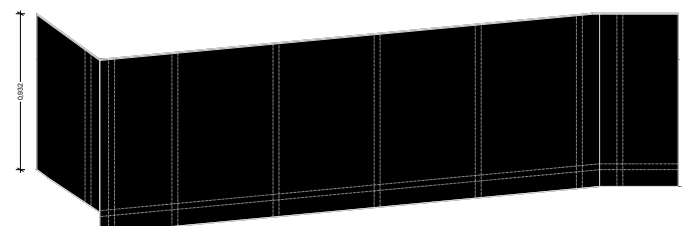
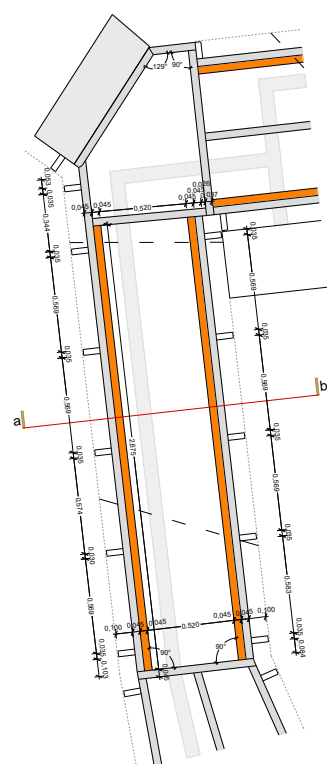
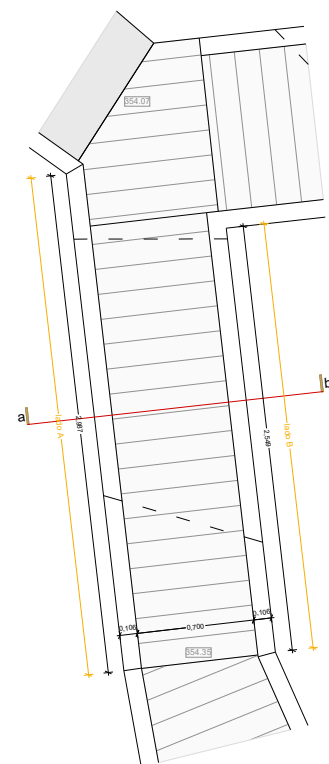
corte ab



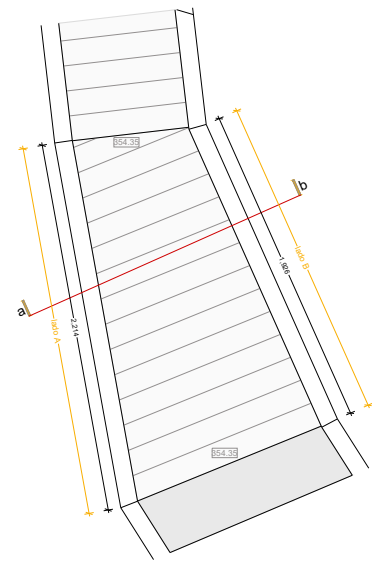
troço 3



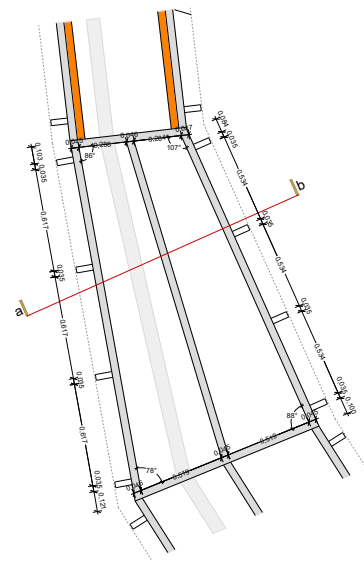
troço 4



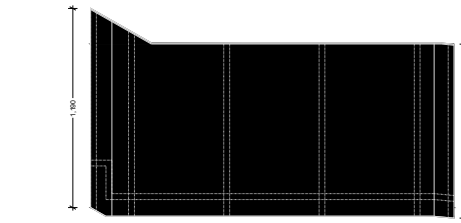
troço 5



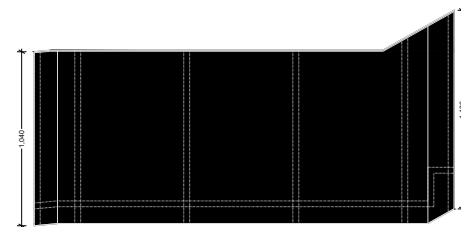
planta



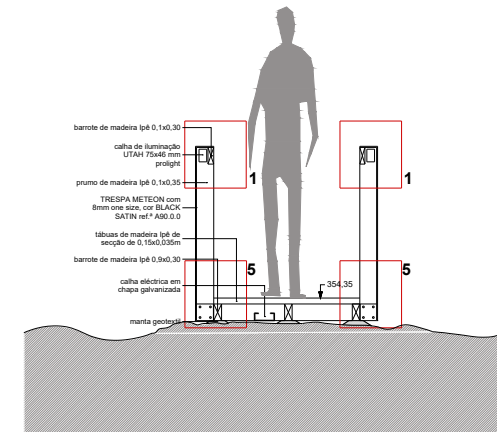
esquema de estrutura



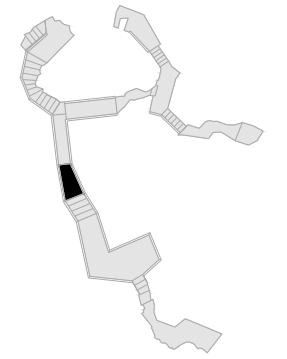
vista exterior da guarda lado B



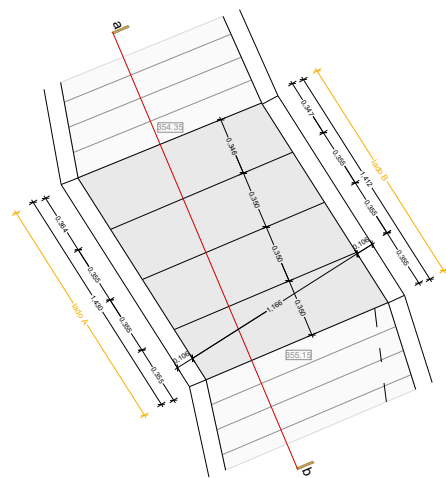
vista exterior da guarda lado A



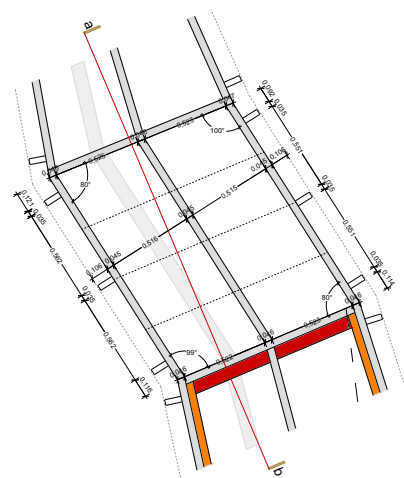
cutre ab



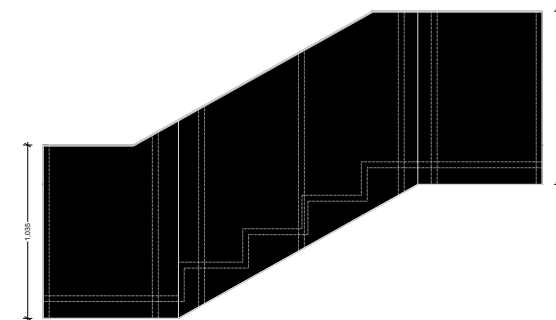
troço 6



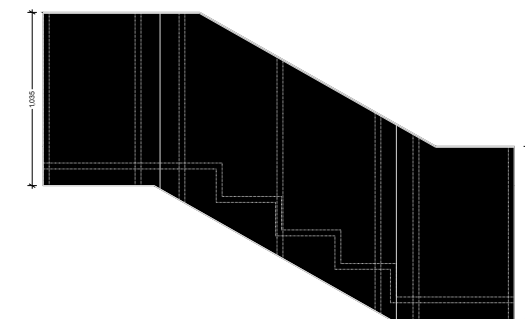
planta



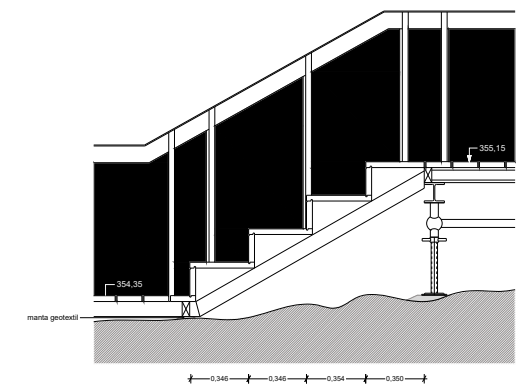
esquema de estrutura



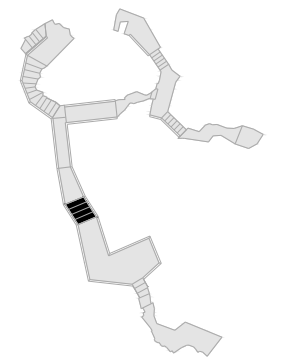
vista exterior da guarda lado A



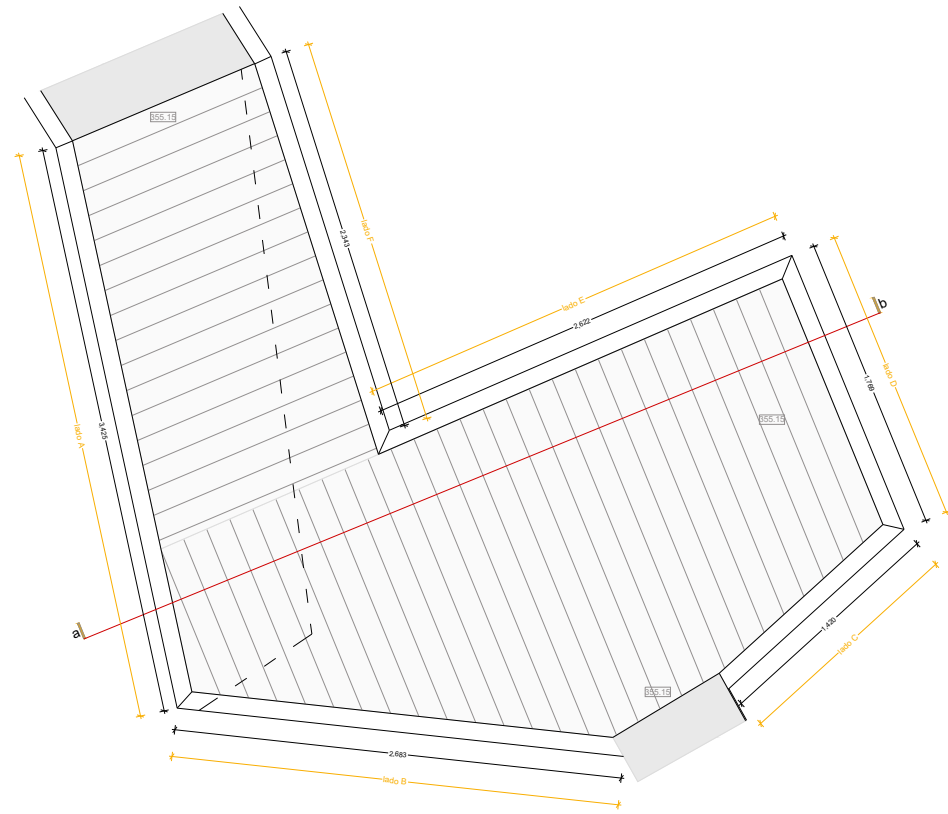
vista exterior da guarda lado B



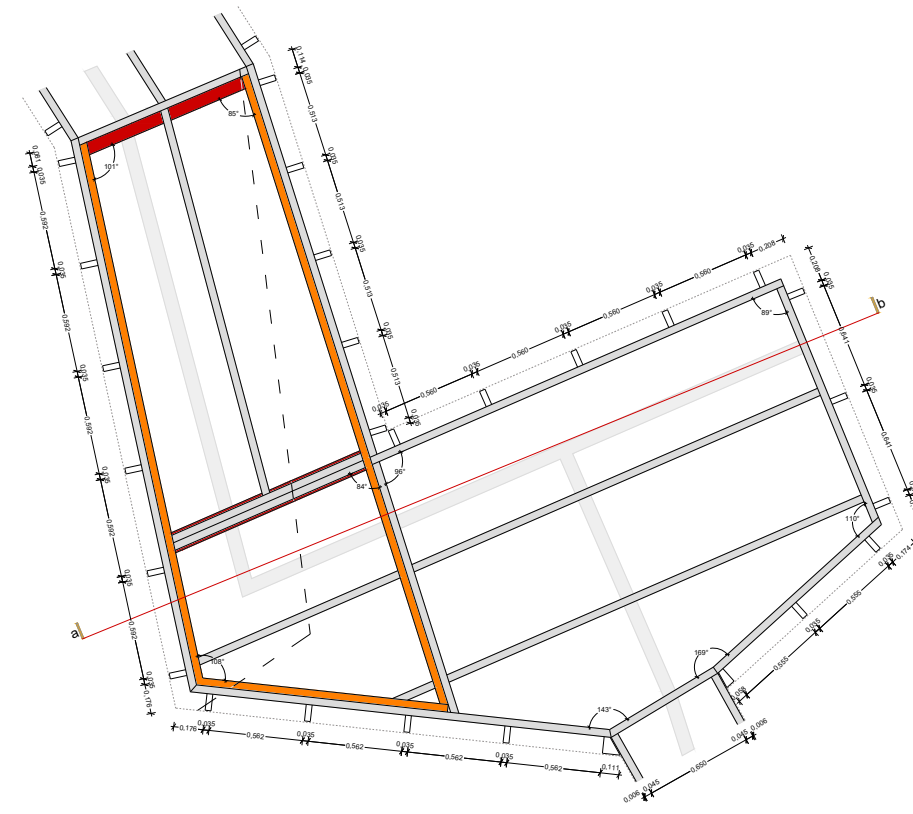
cutre ab



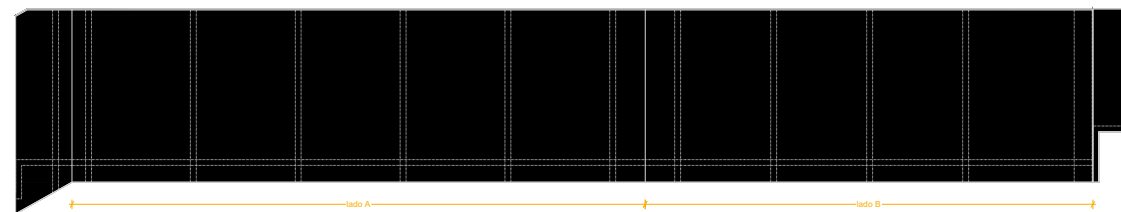
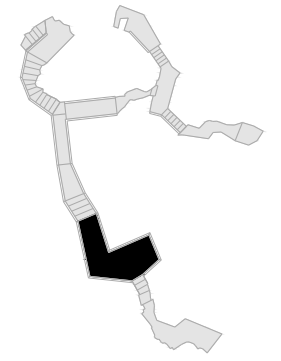
troço 7



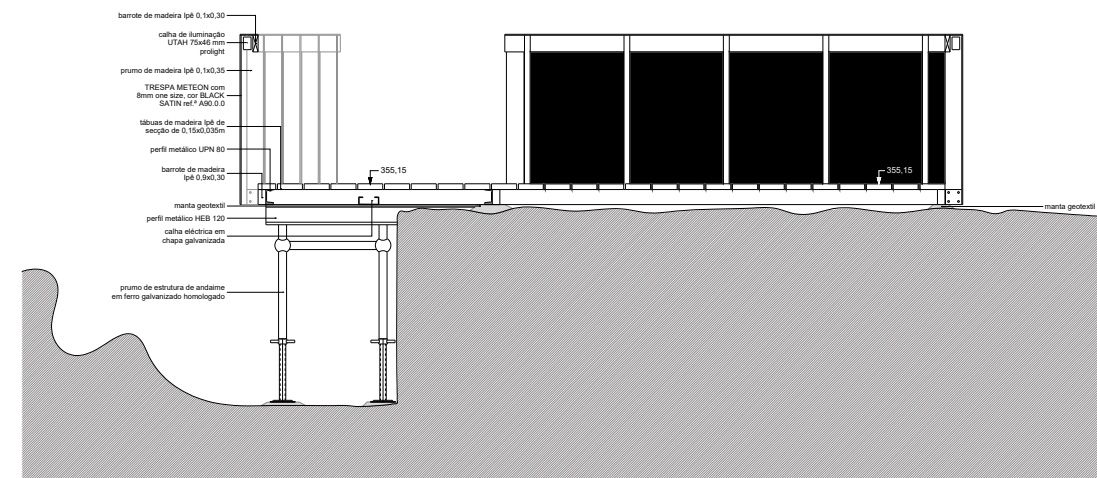
planta



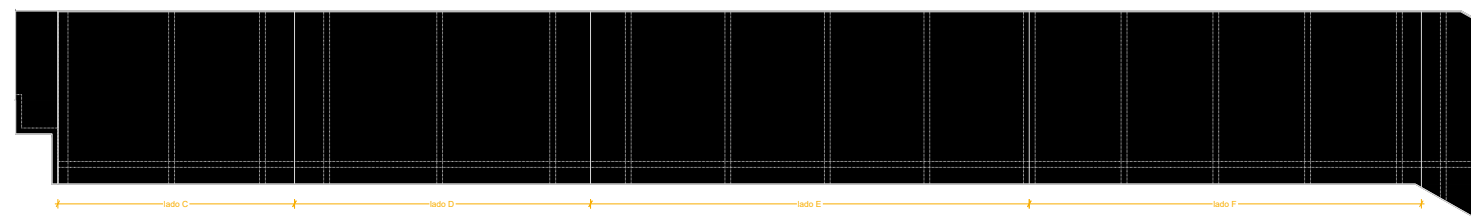
esquema de estrutura



vista exterior da guarda

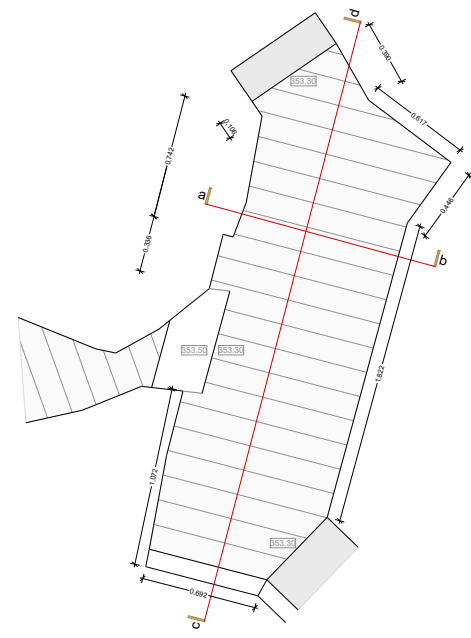


corte ab

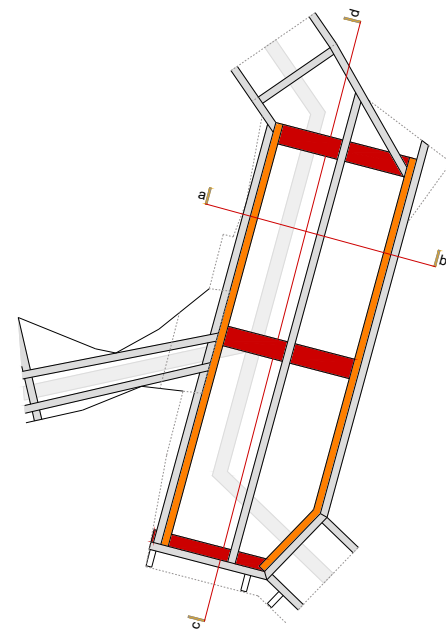


vista exterior da guarda

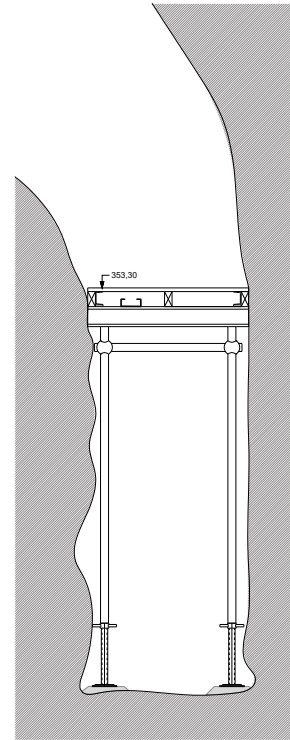
troço 11



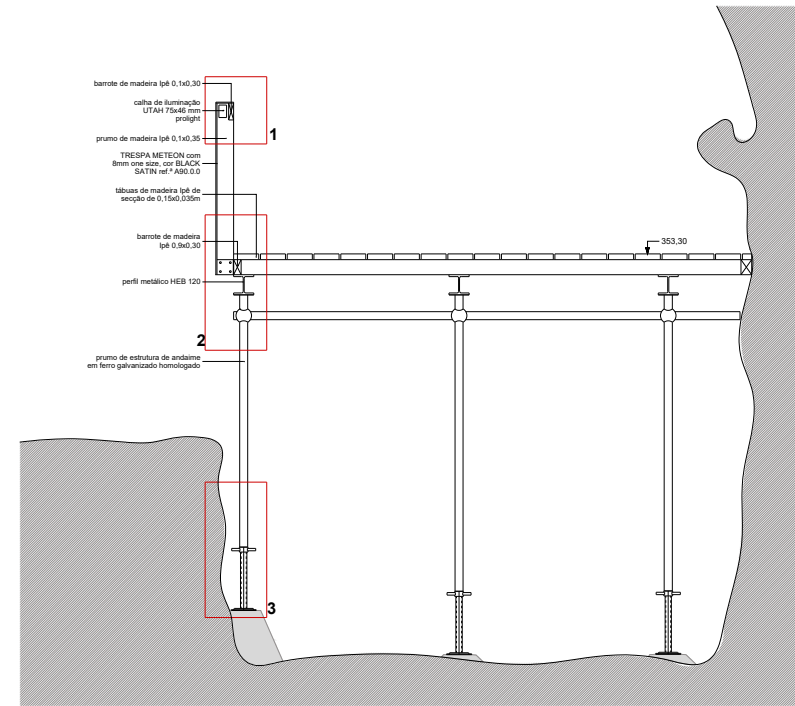
planta



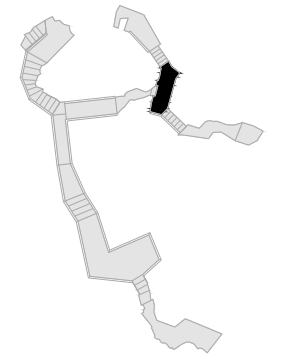
esquema de estrutura



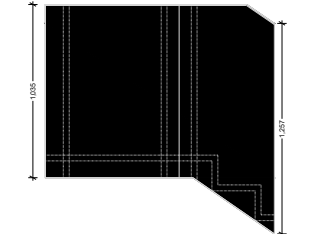
corte ab



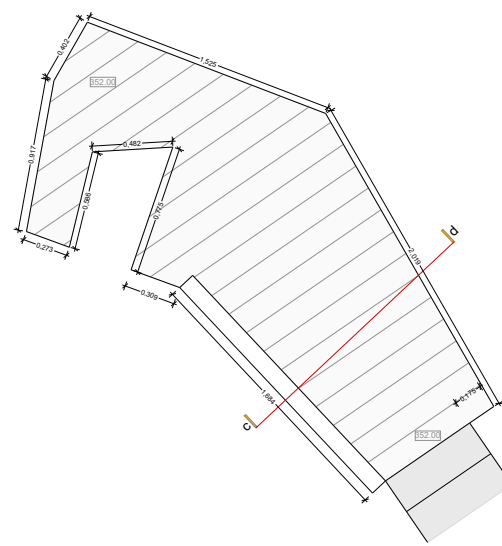
corte cd



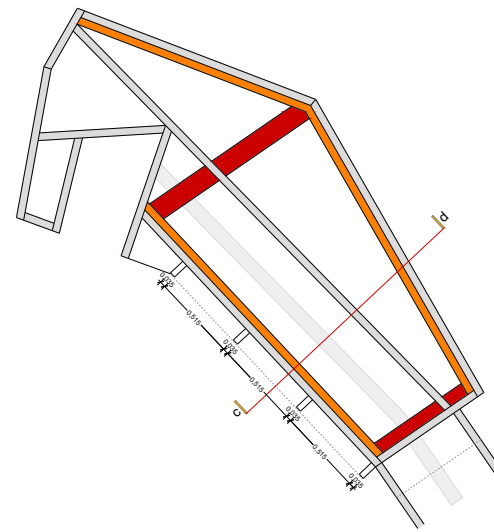
vista exterior da guarda



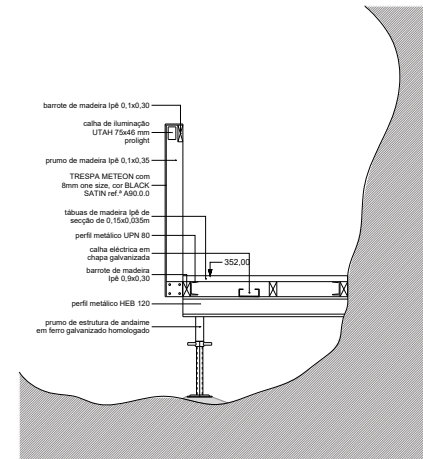
troço 12



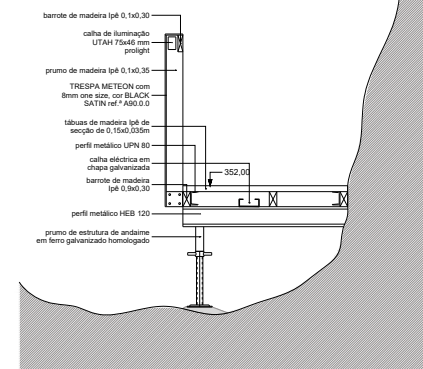
planta



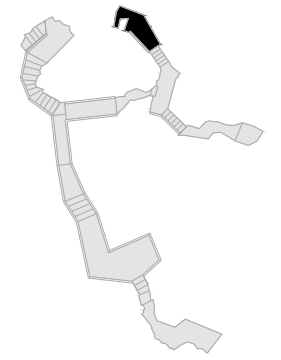
esquema de estrutura



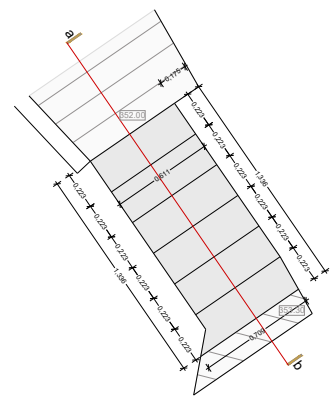
corte ab



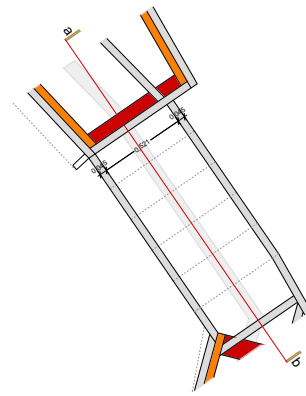
vista exterior da guarda



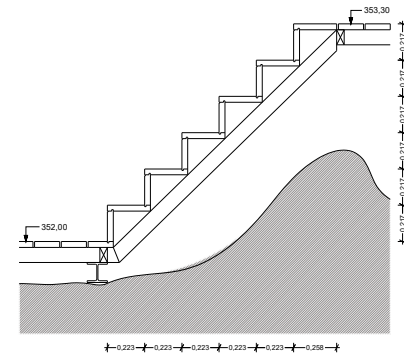
troço 13



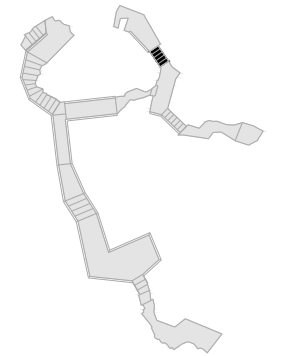
planta



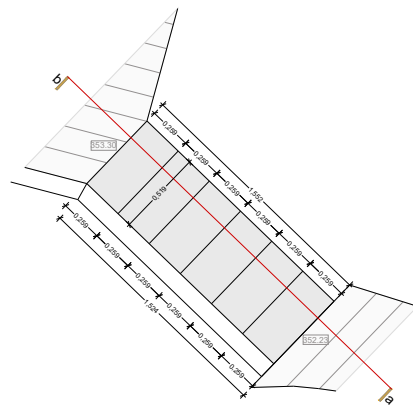
esquema de estrutura



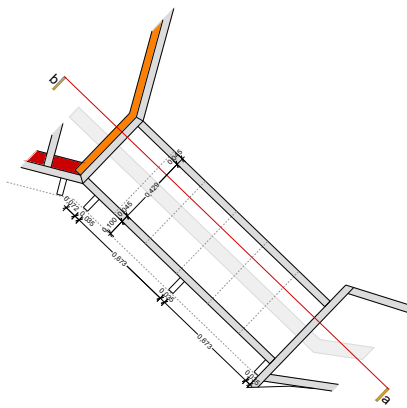
corte ab



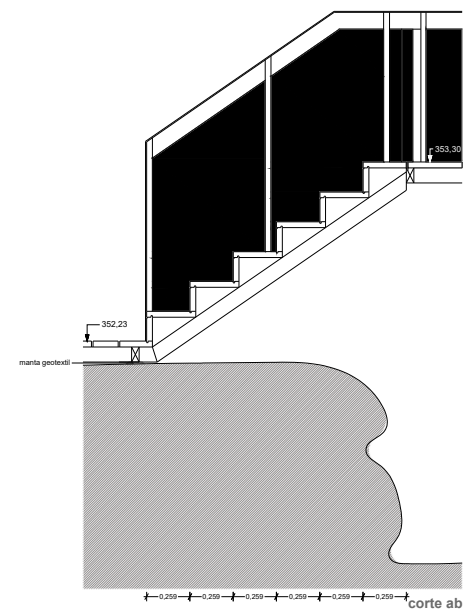
troço 14



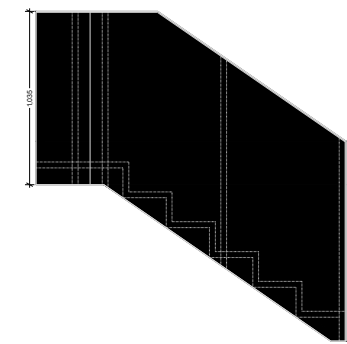
planta



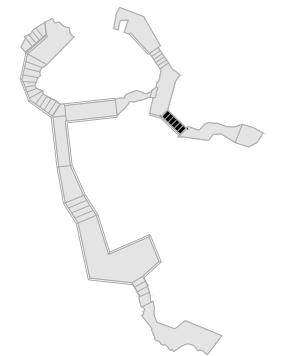
esquema de estrutura



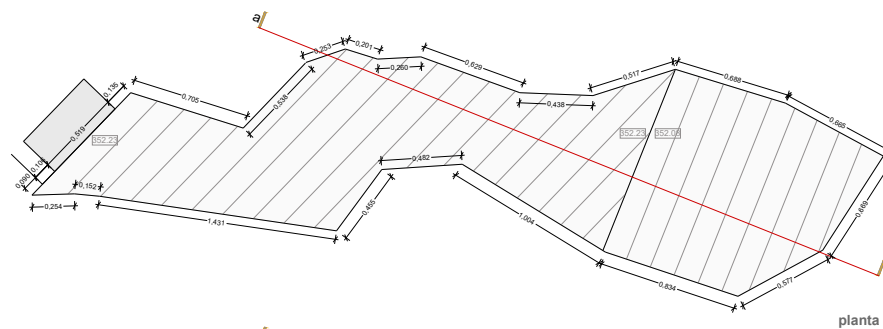
corte ab



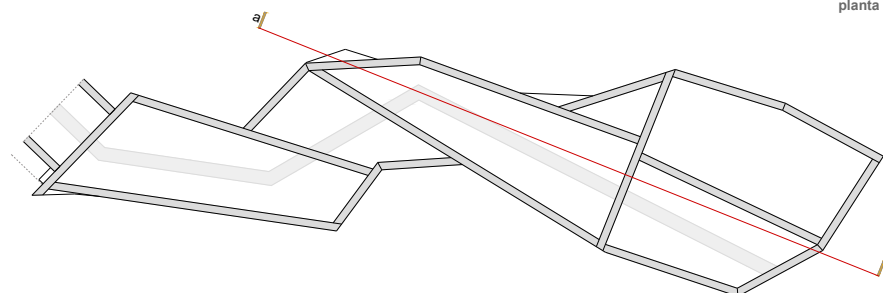
vista exterior da guarda



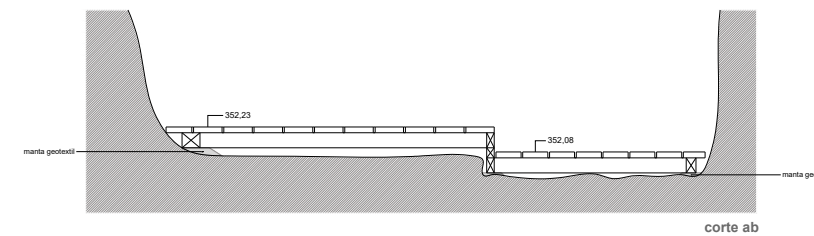
troço 15



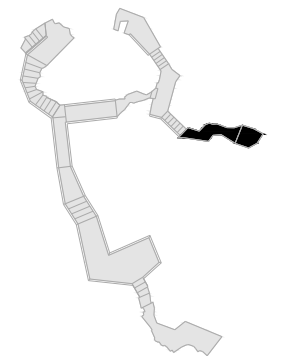
planta

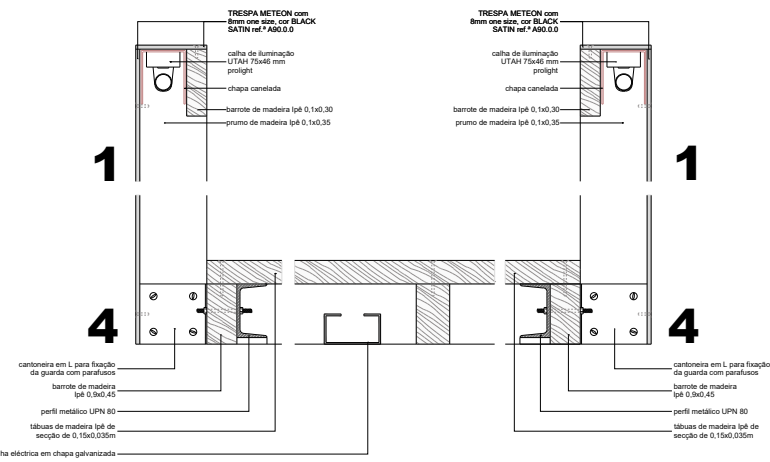
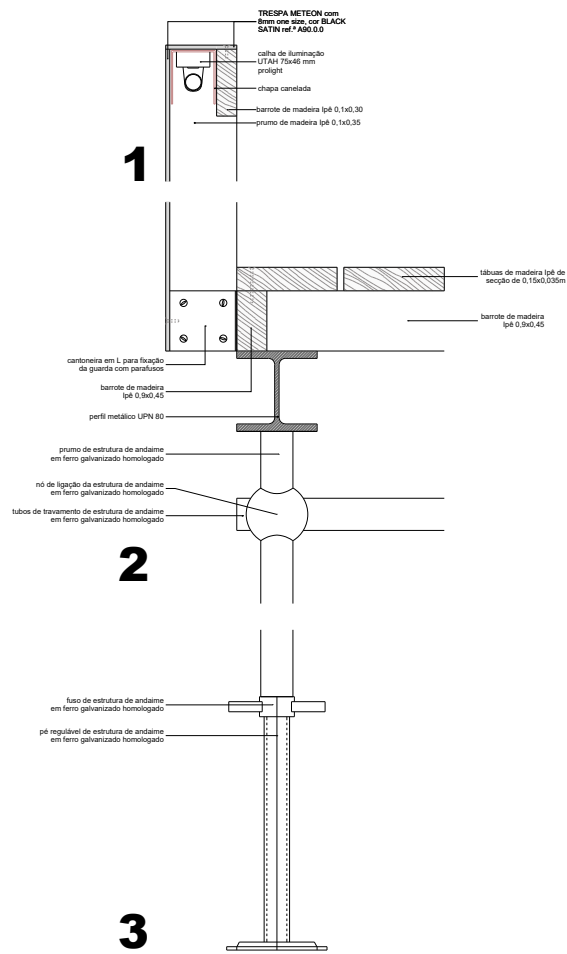


esquema de estrutura

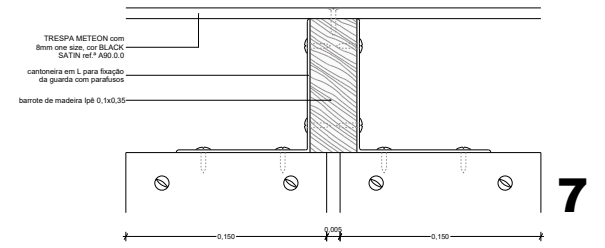
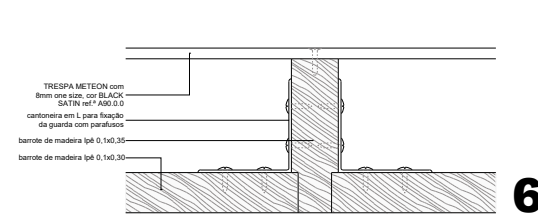


corte ab

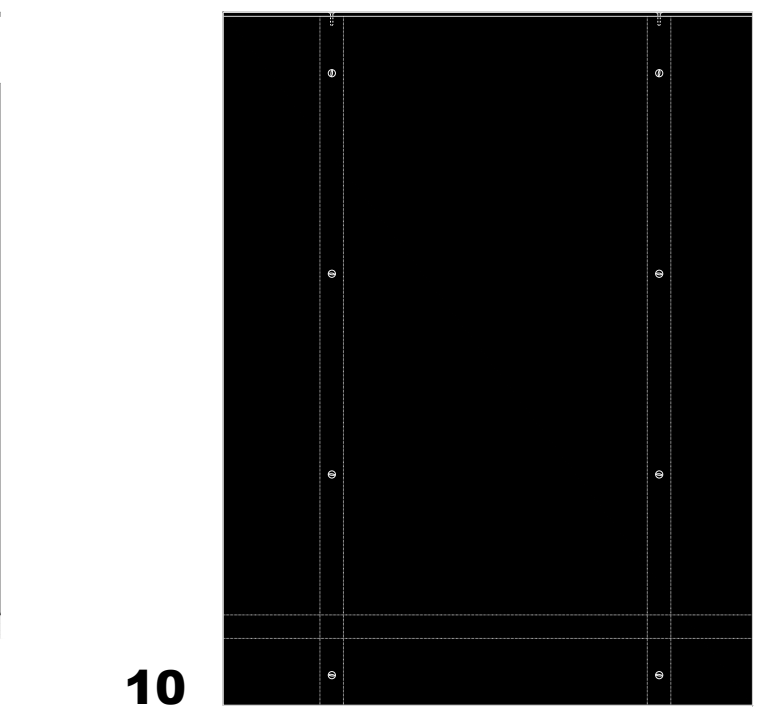
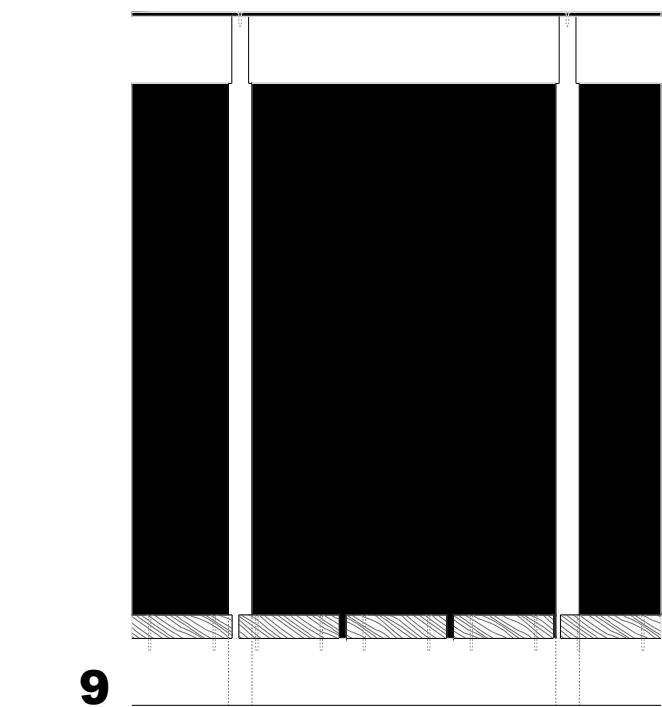
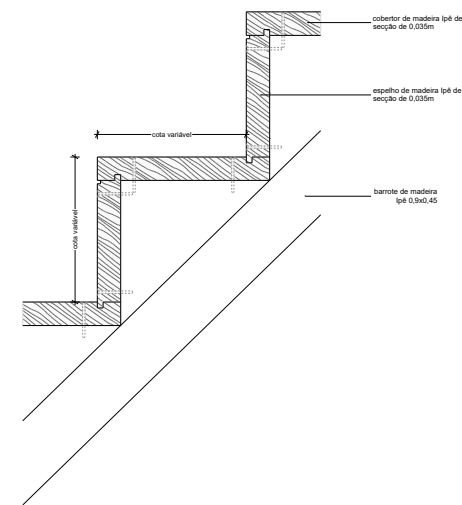




Pormenor tipo das fixações das guardas



Pormenor tipo das escadas de madeira



Pormenor do alçapão (troço 1)

