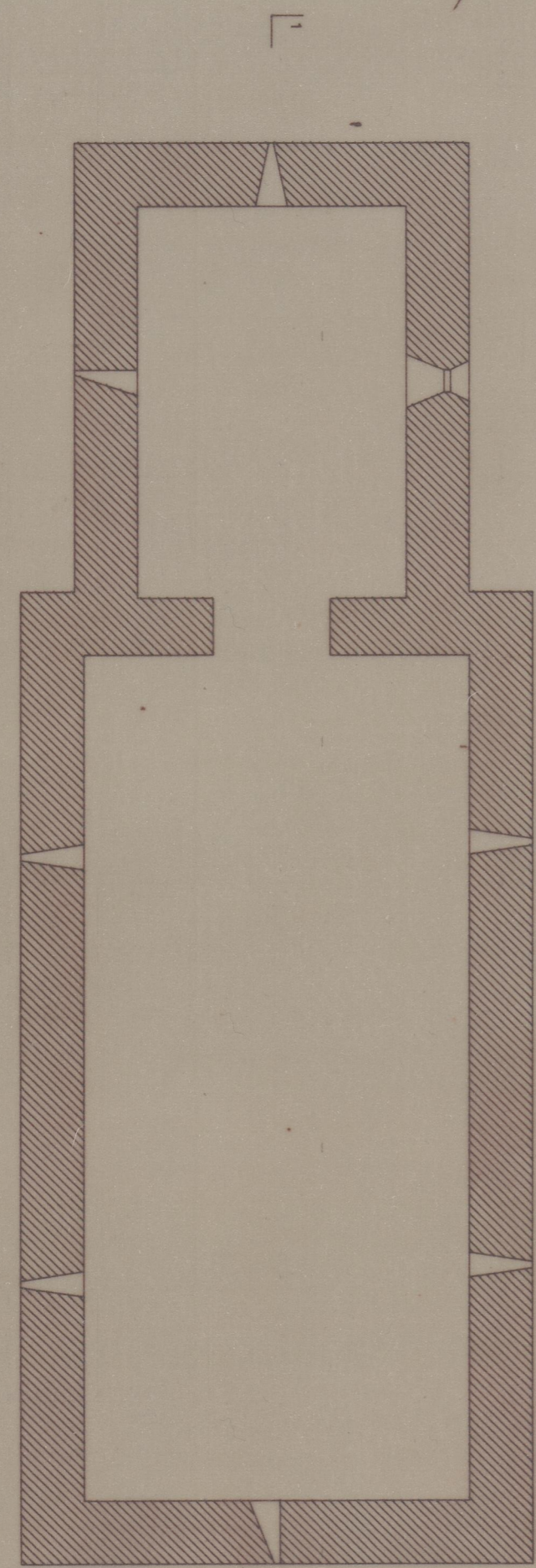
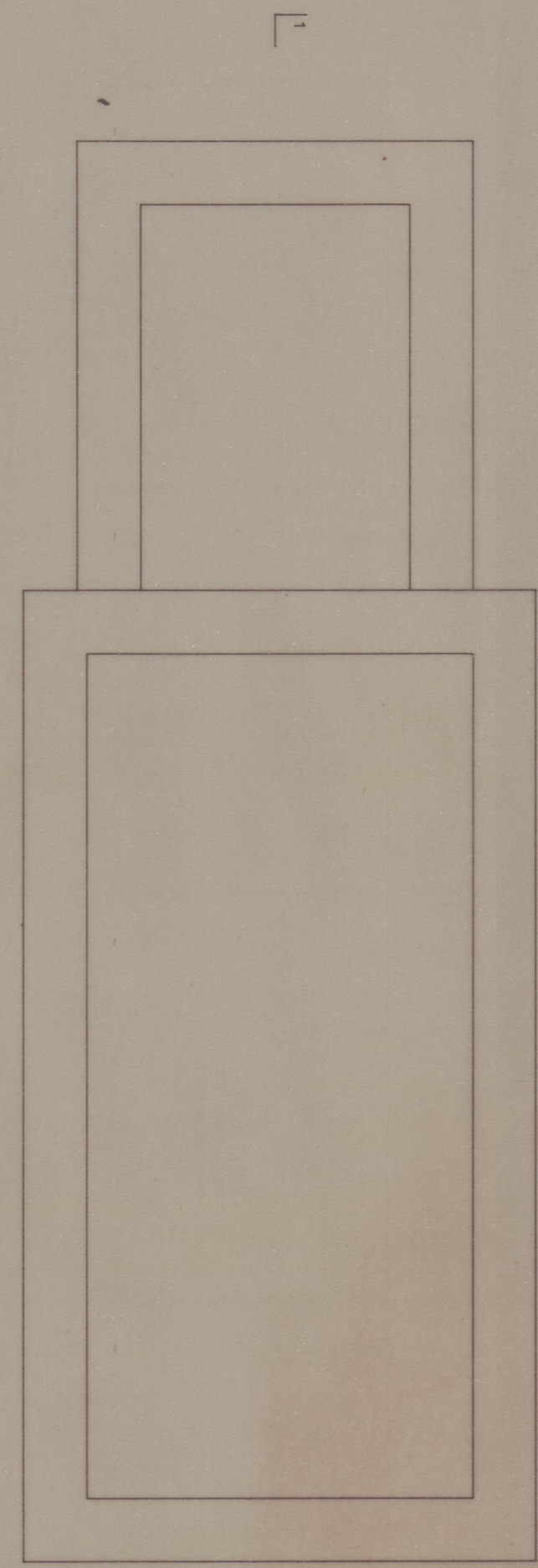


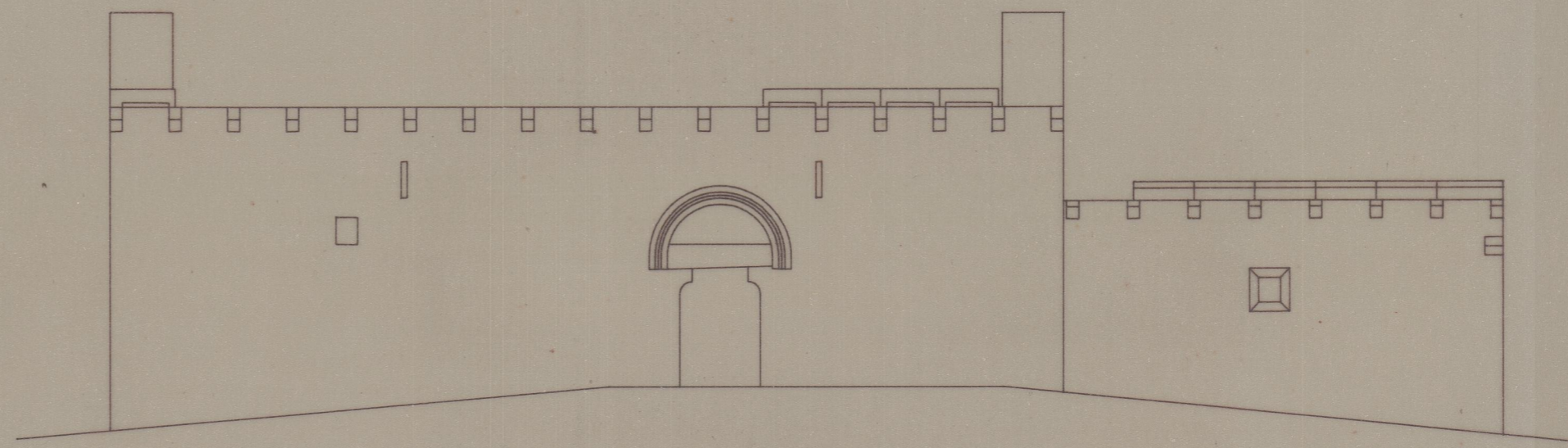
PLANTA PISO 1



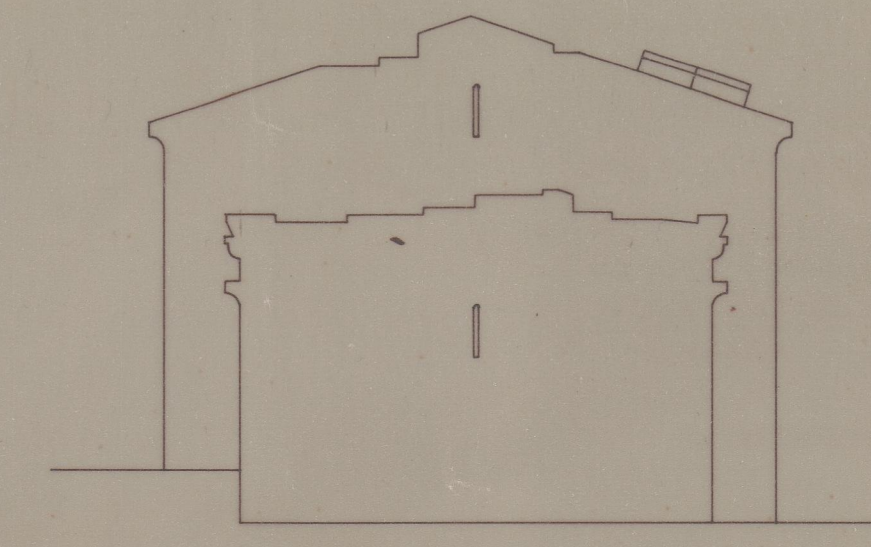
PLANTA PISO 2



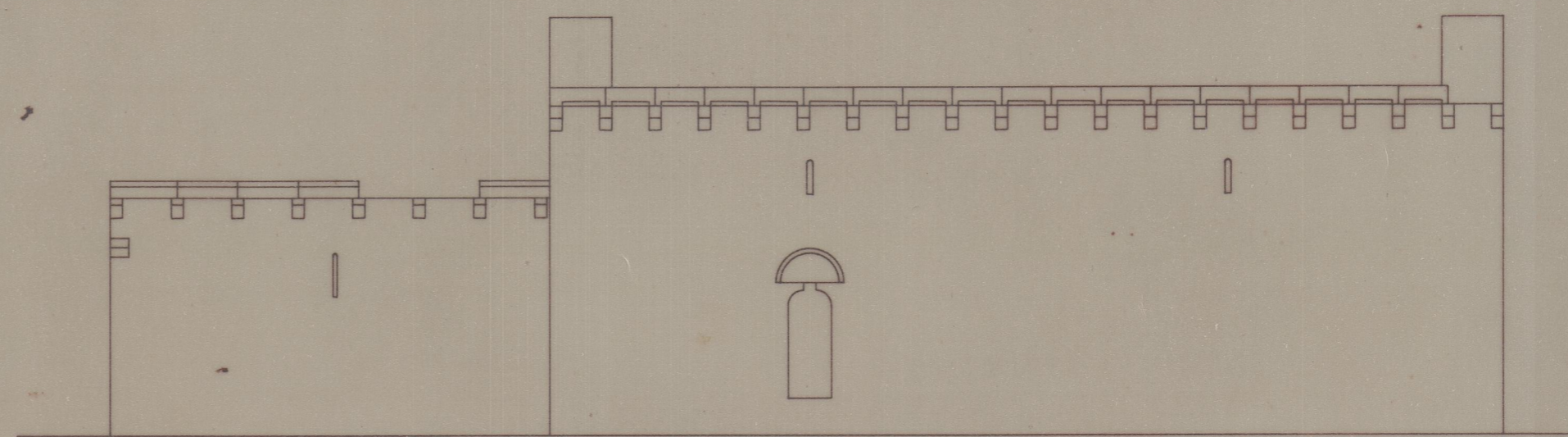
PLANTA DE COBERTURA



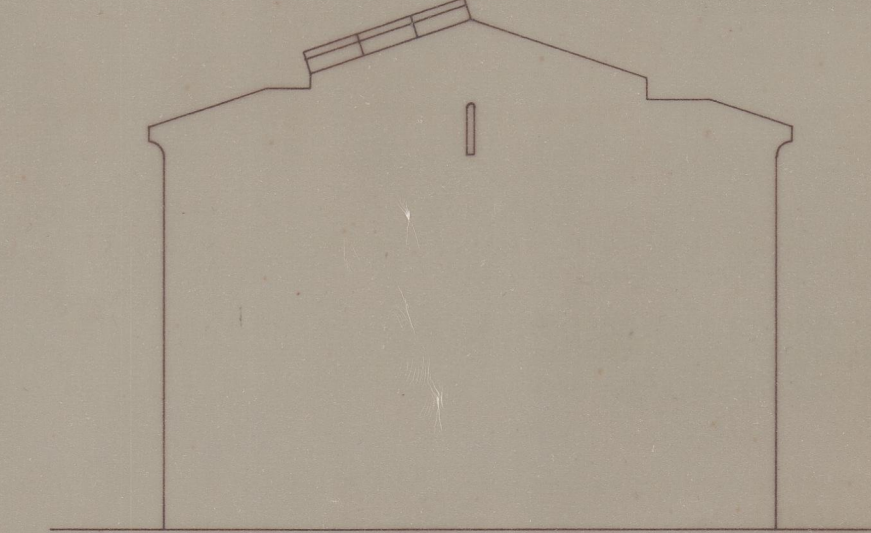
ALCADO SUL



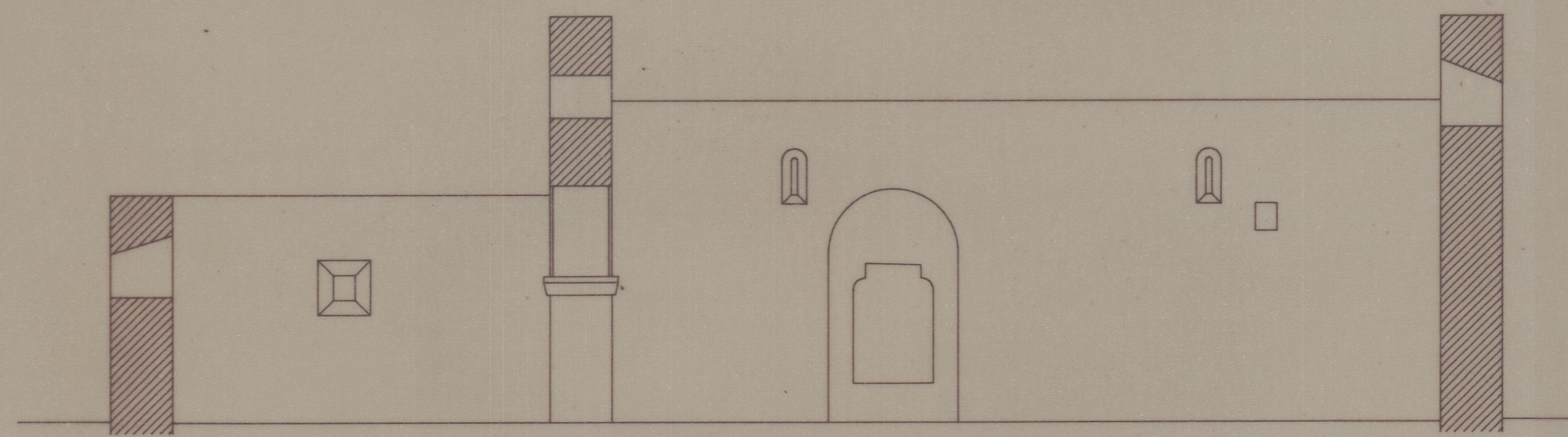
ALCADO NASCENTE



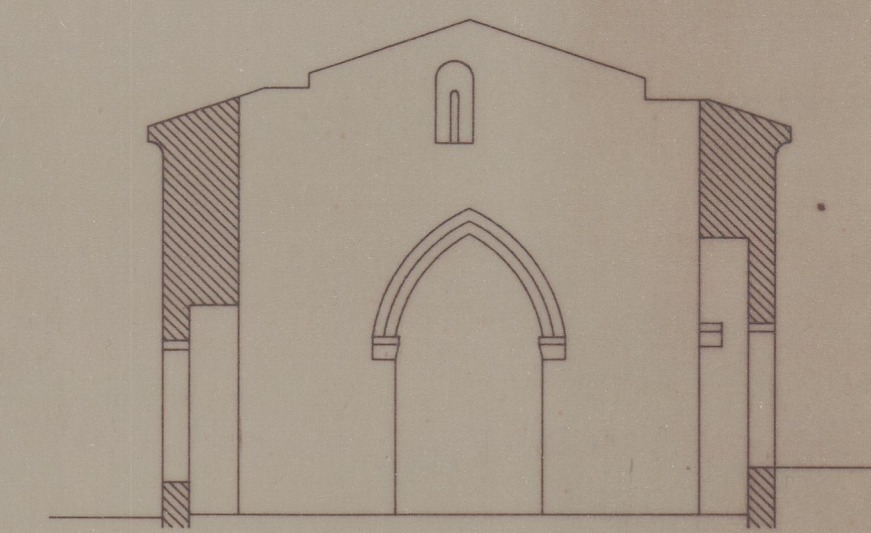
ALCADO NORTE



ALCADO POENTE



CORTE C1



CORTE C2

Est. 2700
41-3519

CASTELO DE ANSIÃES - CARRAZEDA DE ANSIÃES	IPPAR	002	
PROJECTO DE REVITALIZAÇÃO E SALVAGUARDA	PROJECTO DE EXECUÇÃO	PL100-1	
IGREJA DE S. JOÃO BAPTISTA - PLANTAS, CORTES E ALÇADOS-EXISTENTE		ESC. 1:100	2
FRANCISCO CUNHA arquitecto		NOV. 92	