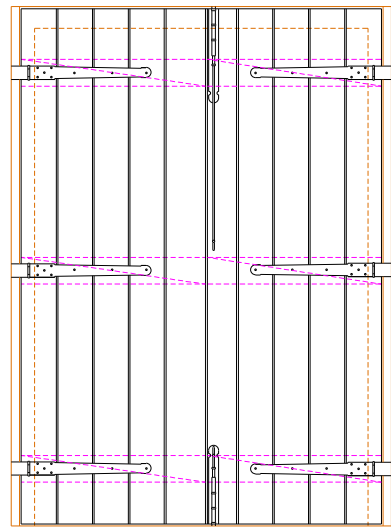
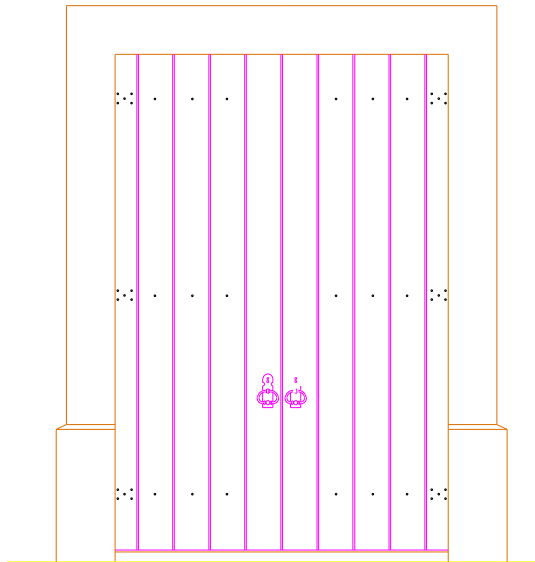


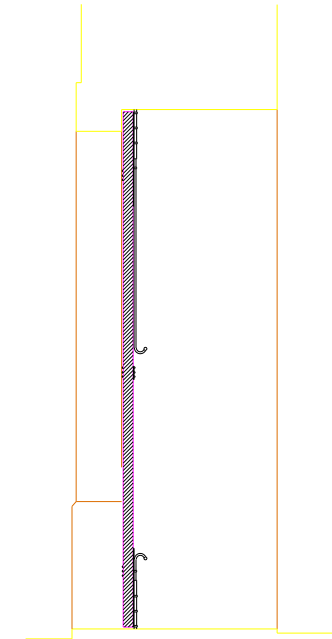
PORTA - P1



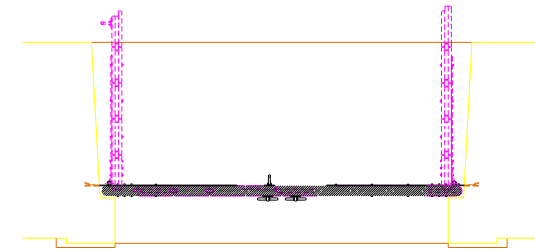
alçado interior



alçado exterior

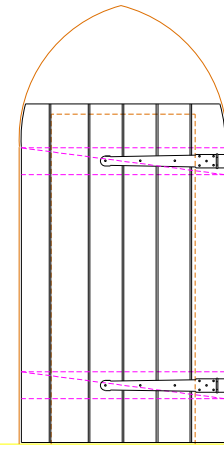


cutre

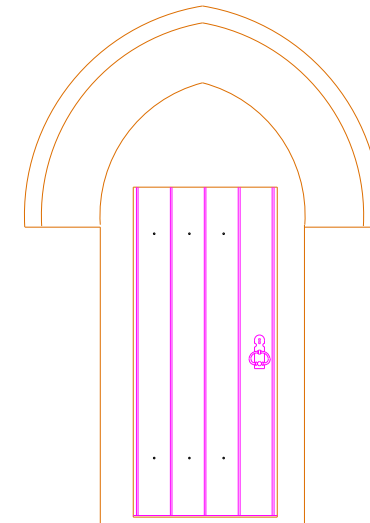


planta

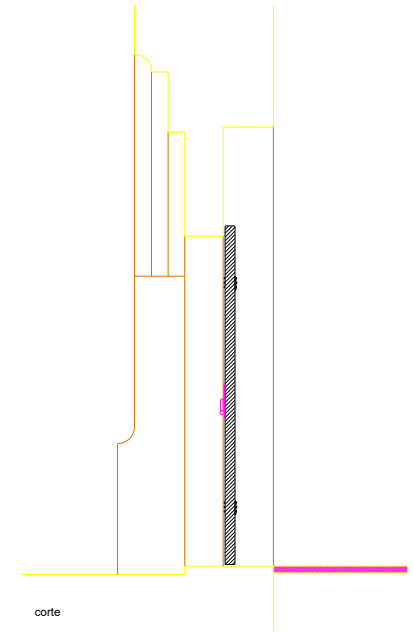
PORTA - P2



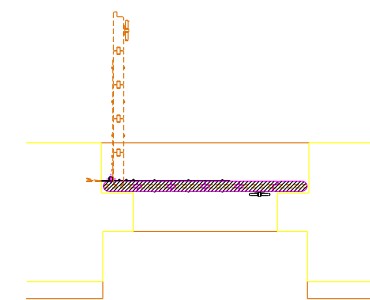
alçado interior



alçado exterior



cutre

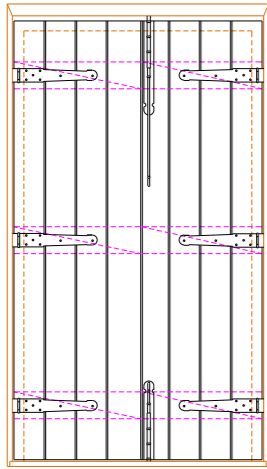


planta

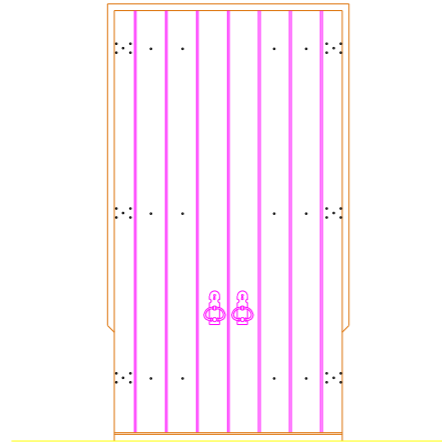
DIRECCAO GERAL DOS EDIFICIOS E MONUMENTOS NACIONAIS
DIRECCAO REGIONAL DOS EDIFICIOS E MONUMENTOS DO NORTE

Projeto	IGREJA PAROQUIAL DE NOGUEIRA DA MONTANHA	N.º de Projeto	1703180012
Local de Trabalho	CHAVES	N.º de Planos	10
Titulo	Projecto de execucao das portas exteriores	Data	Janeiro 2005
Desenhado por	Plantas - alçados exteriores e interiores - cortes	Escala	1:20
Aprovado por			

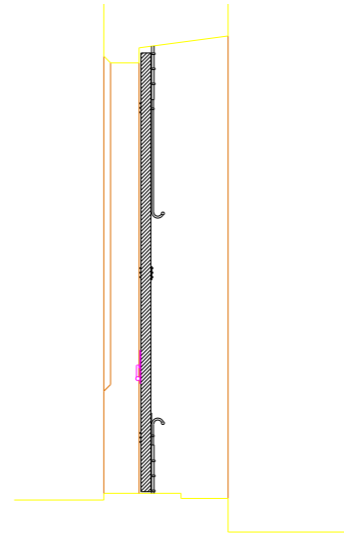
PORTA - P3



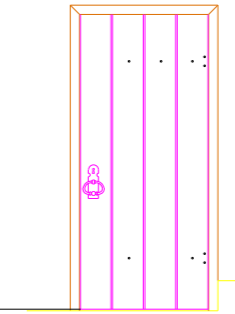
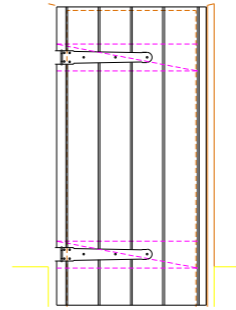
alçado interior



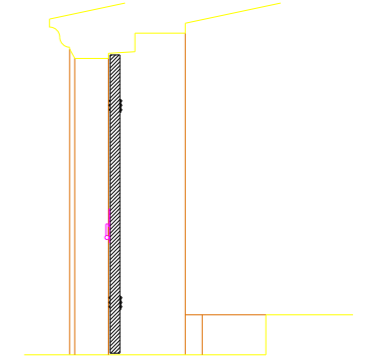
alçado exterior



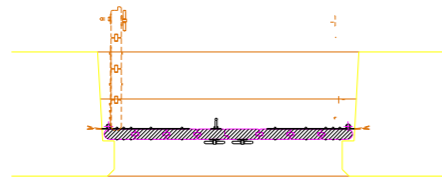
corte



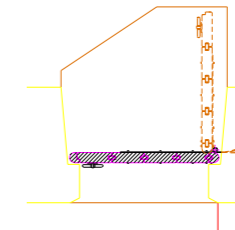
alçado exterior



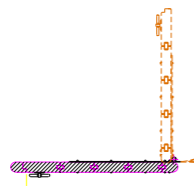
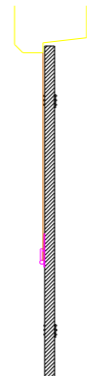
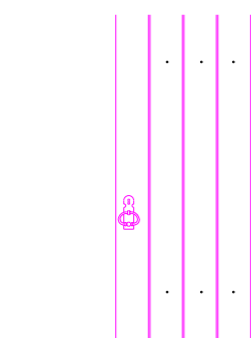
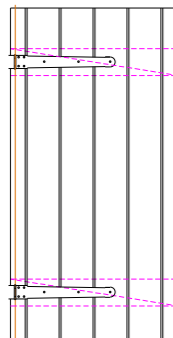
corte



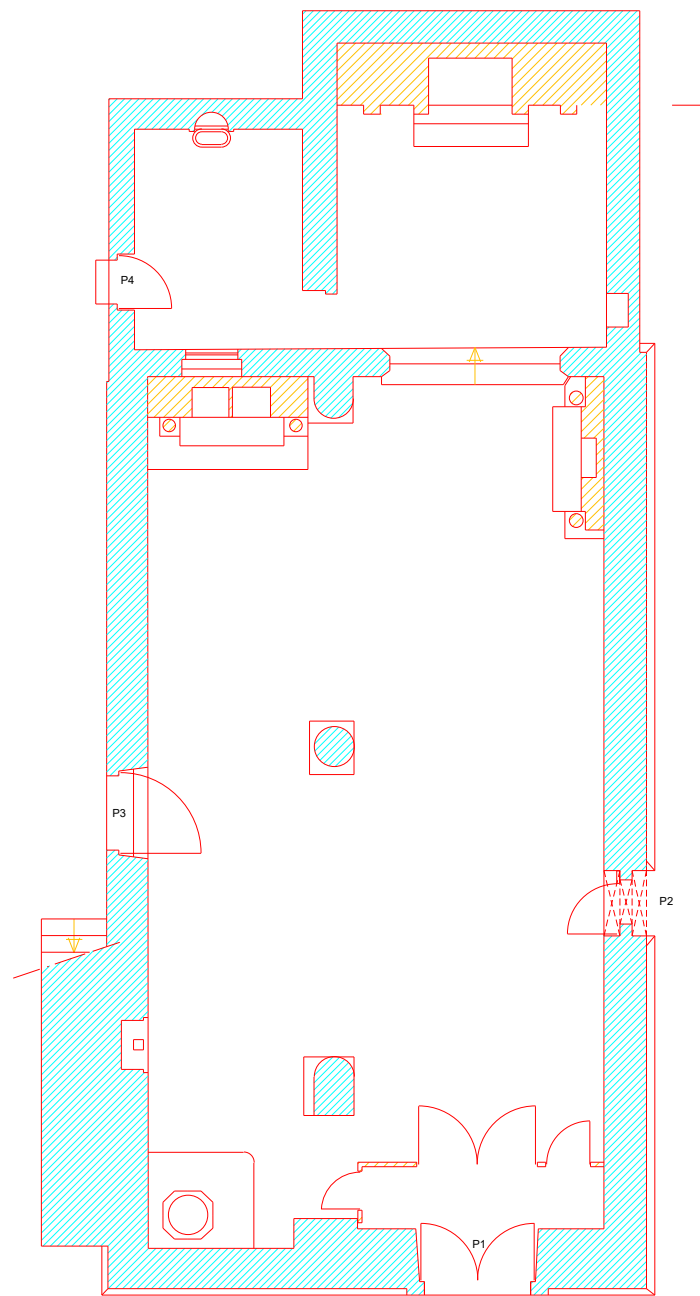
planta



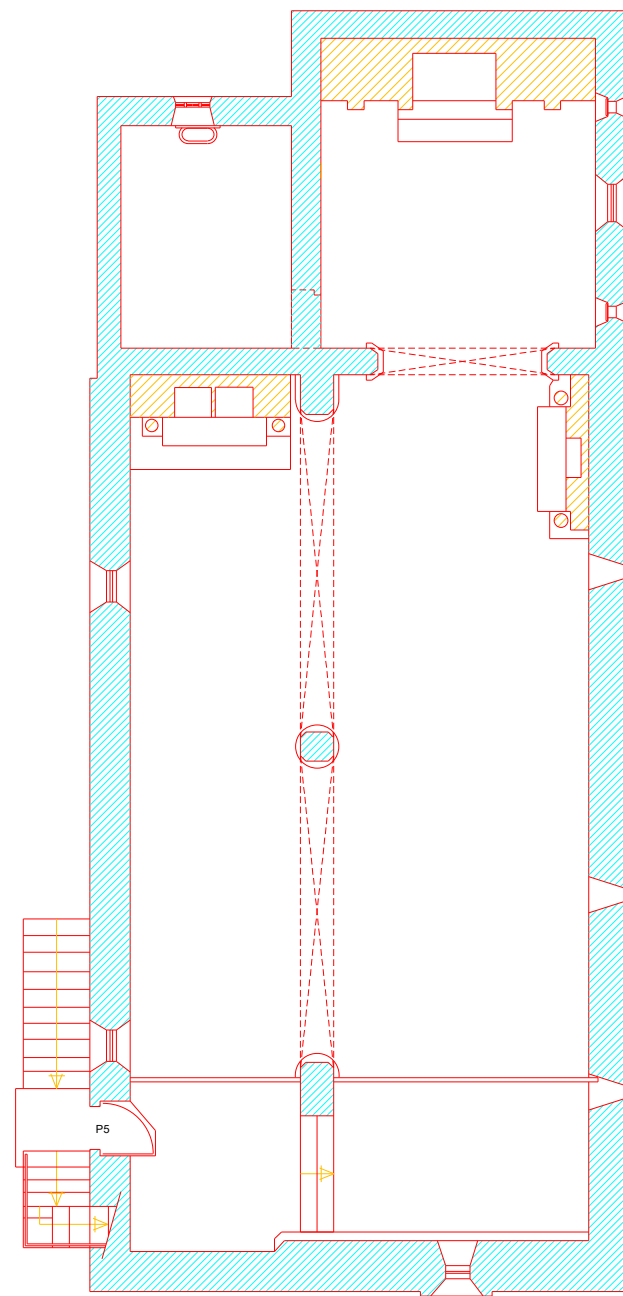
planta



DIRECCAO GERAL DOS EDIFICIOS E MONUMENTOS NACIONAIS		
DIRECCAO REGIONAL DOS EDIFICIOS E MONUMENTOS DO NORTE		
Projeto	IGREJA PAROQUIAL DE NOGUEIRA DA MONTANHA	N.º de Projeto
	CHAVES	1703180012
Execução	Projecto de execução das portas exteriores	Folha
		11
Desenho	Plantas - alçados exteriores e interiores - cortes	Data
		Janeiro 2005
Autores		Escala
		1:20



Planta nível térreo



Planta nível das frestas

- P1 - porta principal de acesso à Nave
- P2 - porta lateral de acesso à Nave
- P3 - porta lateral de acesso à Nave
- P4 - porta lateral de acesso à Sacristia
- P5 - porta lateral de acesso ao Còro

DIRECCAO GERAL DOS EDIFICIOS E MONUMENTOS NACIONAIS
DIRECCAO REGIONAL DOS EDIFICIOS E MONUMENTOS DO NORTE

Director:	IGREJA PAROQUIAL DE NOGUEIRA DA MONTANHA CHAVES	N.º arquivo:	1703180012
Chefe de Divisao:		N.º de ordem:	9
Arqto.:	Projecto de execucao das portas exteriores	Data:	Janeiro 2005
Desenhador:		Escala:	1:100
A.Martins	Indice dos Vãos		