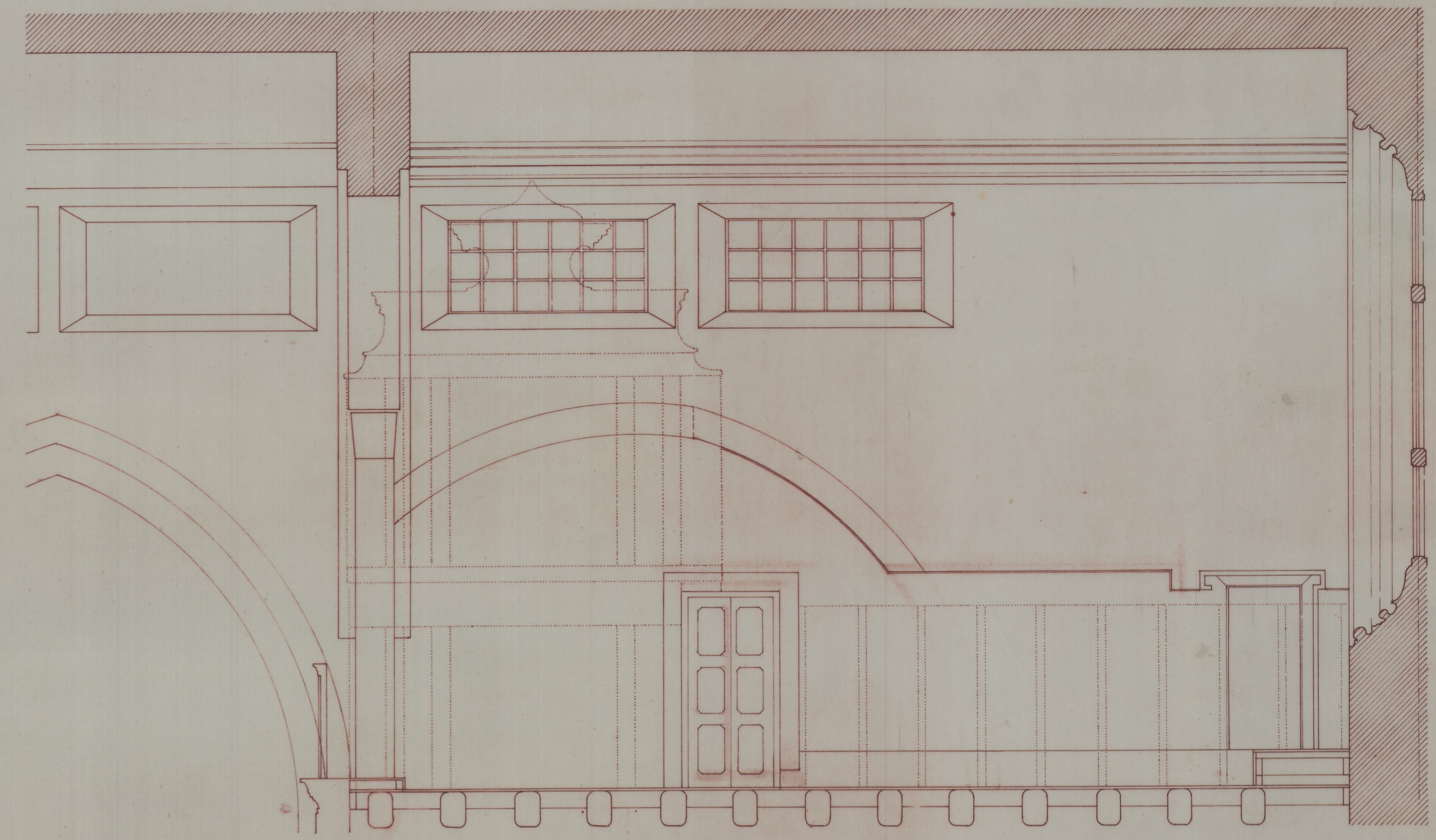
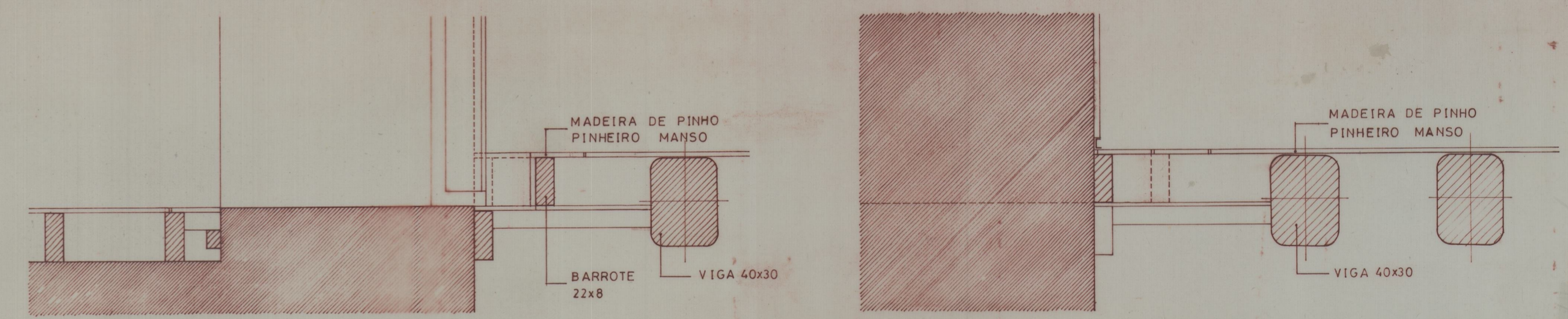




PLANTA DE PAVIMENTOS

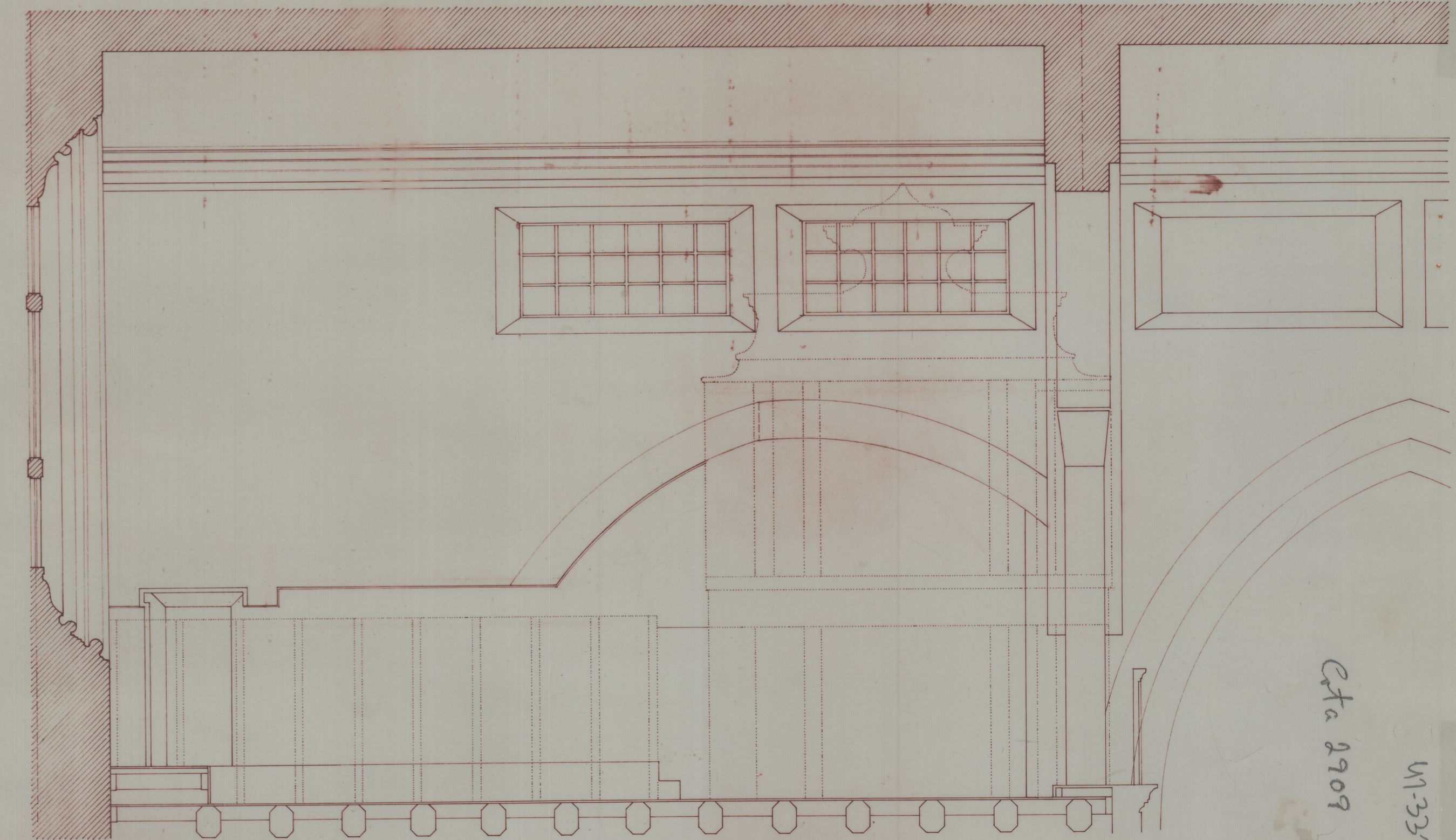


CORTE 11

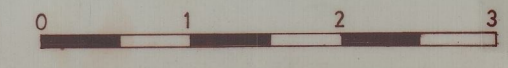


PORM. C

PORM. D



CORTE 22



HUMBERTO VIEIRA ARQUITECTO

I.P.P.A.R.		
RECUPERAÇÃO E REMODELAÇÃO DO MOSTEIRO DE POMBEIRO - FELGUEIRAS		
CORO ALTO E SALAS ANEXAS	AGOSTO 1994	
CORTES E PLANTA DE PAVIMENTOS	ESCALA 1:20, 1:50	1

Cta 2909
M-3310