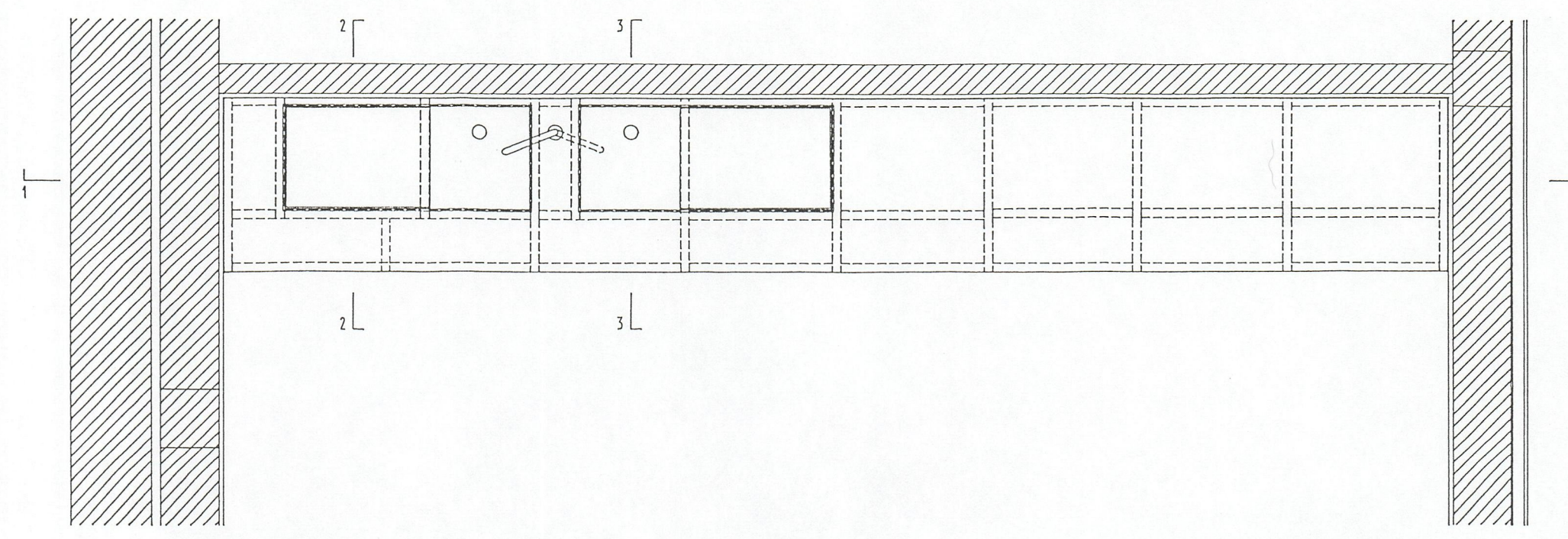
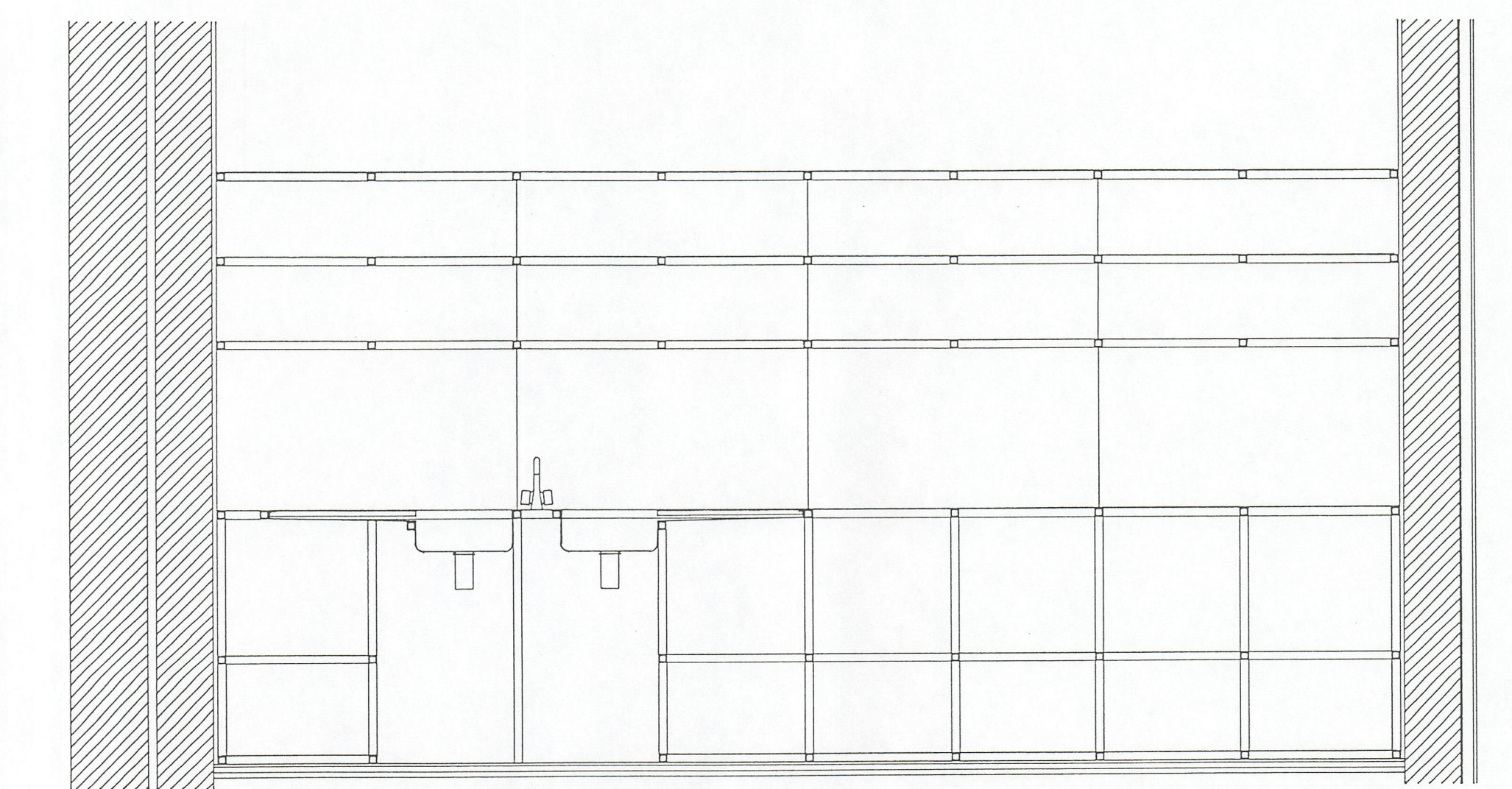


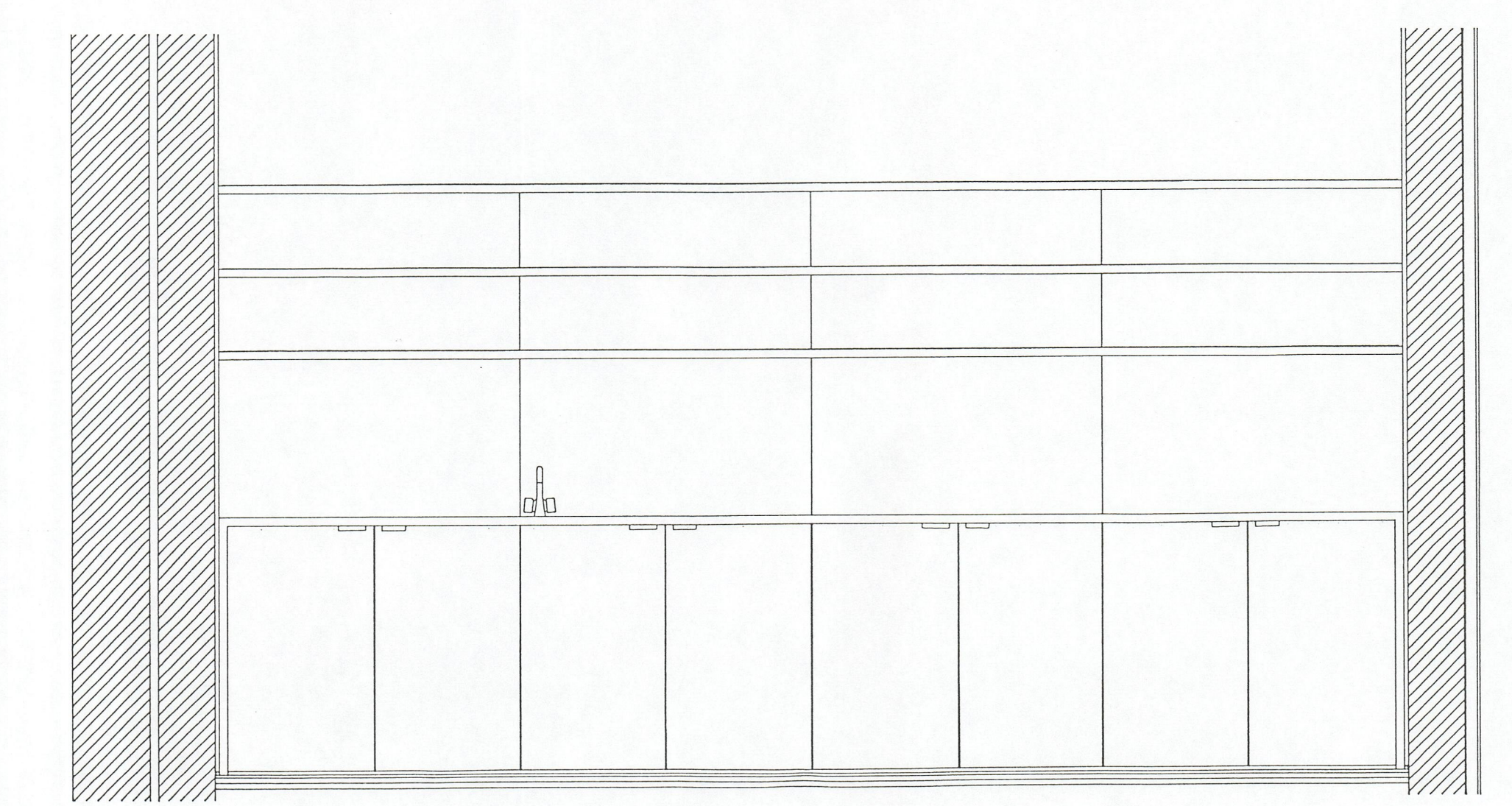
PLANTA



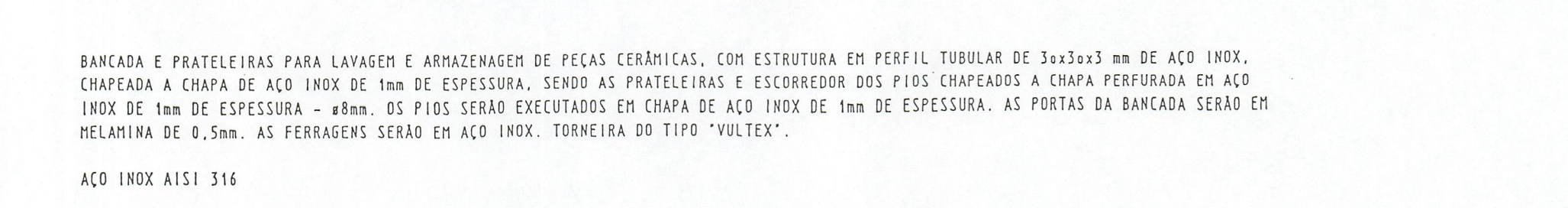
PLANTA



CORTE 1.1



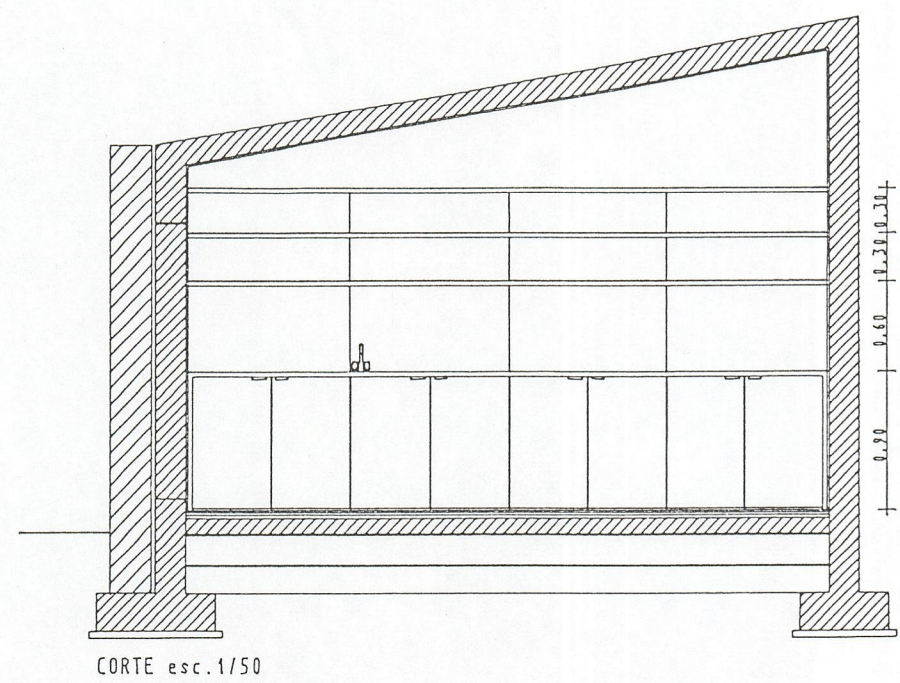
CORTE 1.2



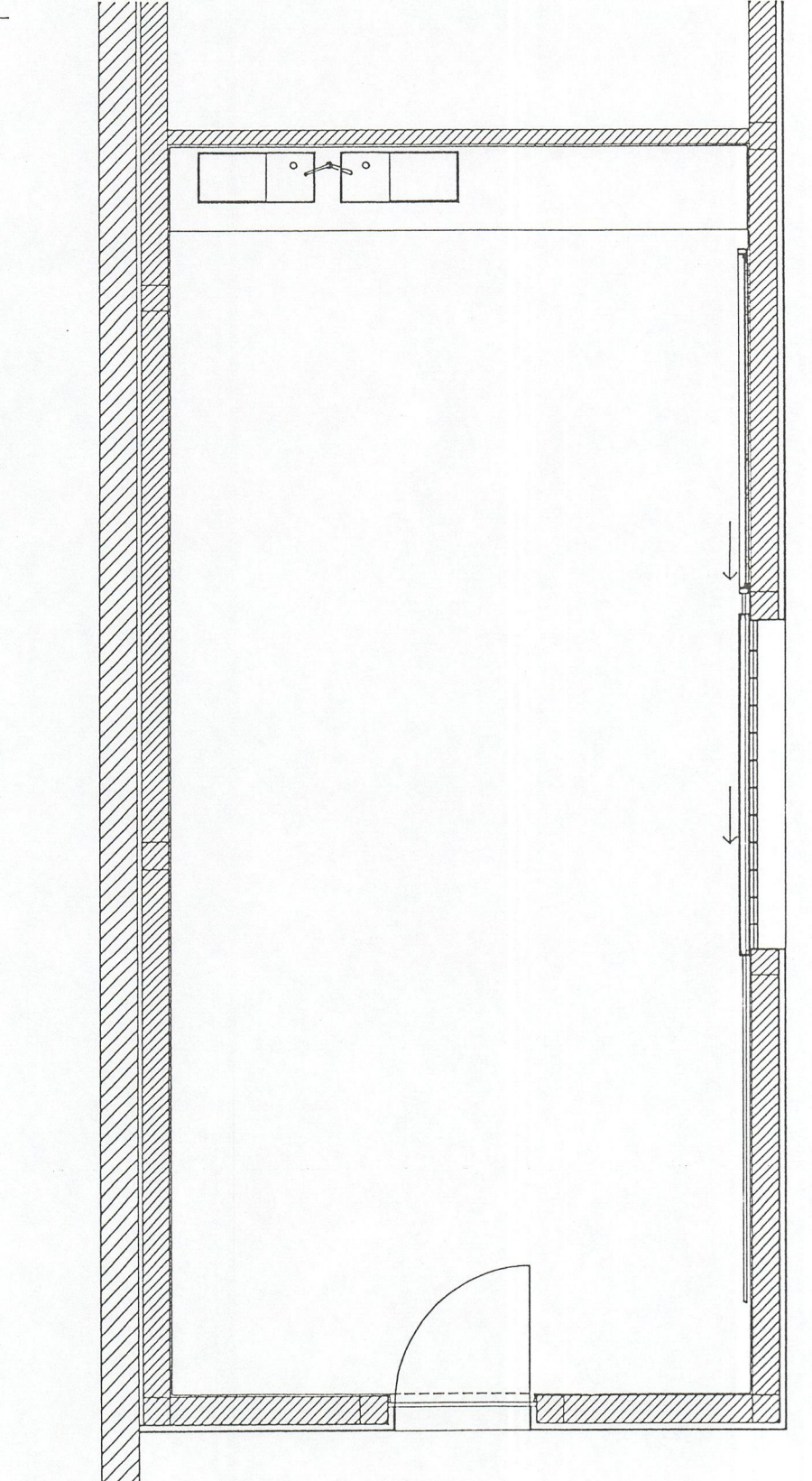
CORTE 2.2



CORTE 3.3



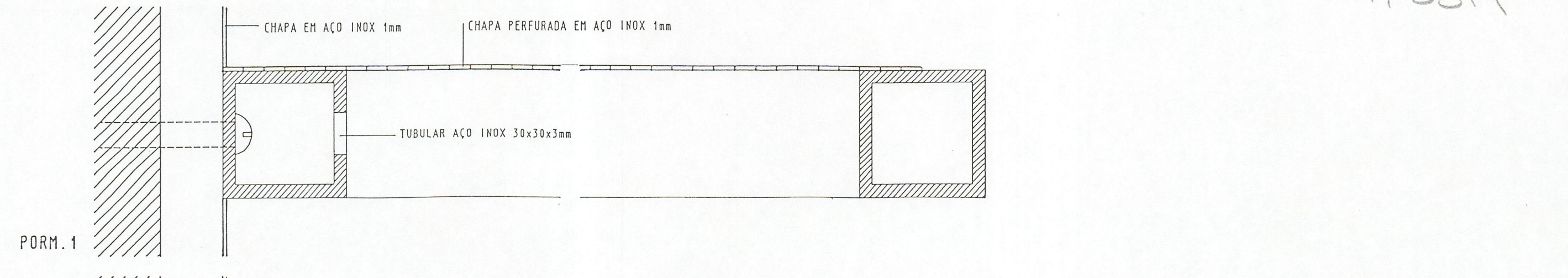
PLANTA PARCIAL



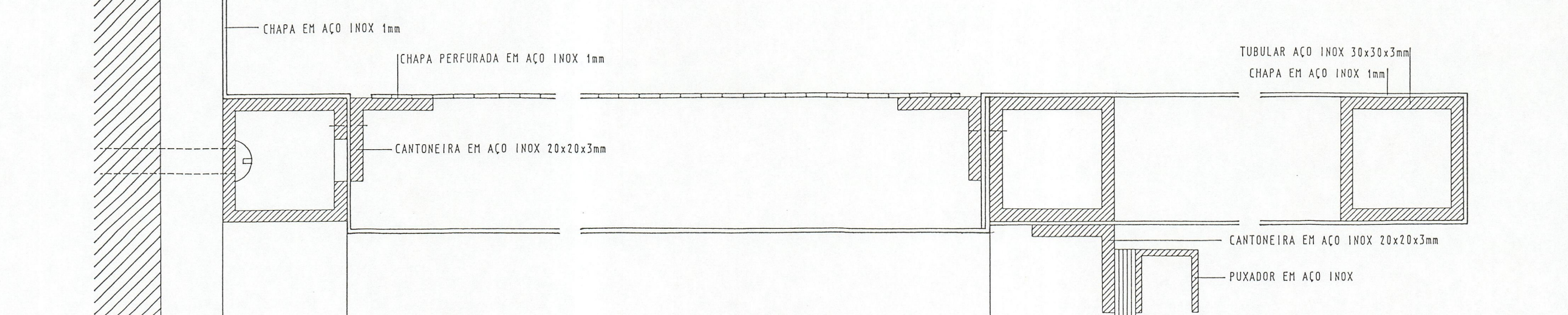
CORTE

BANCADA E PRATELEIRAS PARA LAVAGEM E ARMAZENAGEM DE PEÇAS CERÂMICAS, COM ESTRUTURA EM PERFIL TUBULAR DE 3x3x3 mm DE AÇO INOX, CHAPEADA A CHAPA DE AÇO INOX DE 1mm DE ESPESURA, SENDO AS PRATELEIRAS E ESCORREDOR DOS PIOS CHAPEADOS A CHAPA PERFORADA EM AÇO INOX DE 1mm DE ESPESURA - ø8mm. OS PIOS SERÃO EXECUTADOS EM CHAPA DE AÇO INOX DE 1mm DE ESPESURA. AS PORTAS DA BANCADA SERÃO EM MELAMINA DE 0,5mm. AS FERRAGENS SERÃO EM AÇO INOX. TORNEIRA DO TIPO "VULTEX".

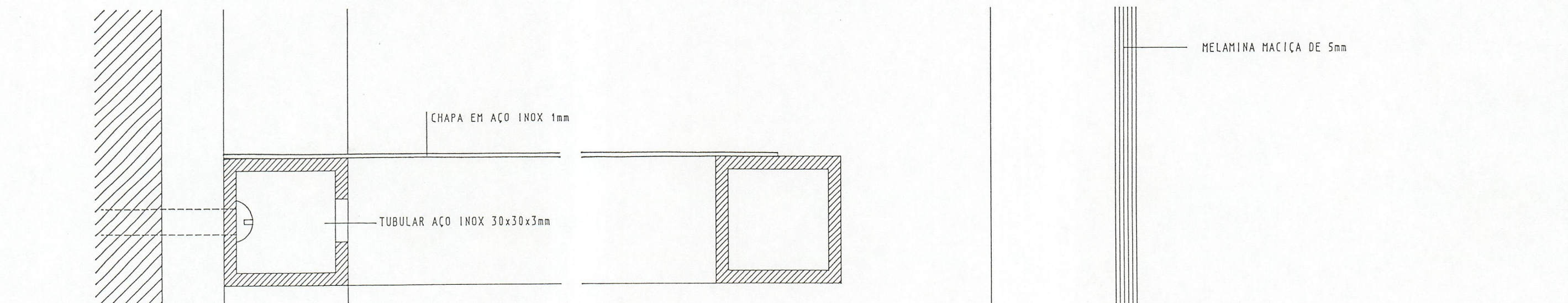
AÇO INOX AISI 316



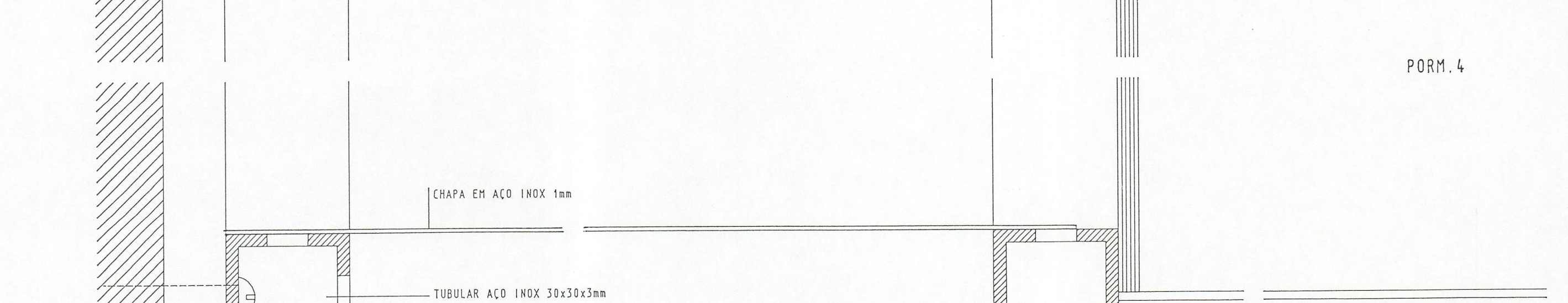
PORM. 1



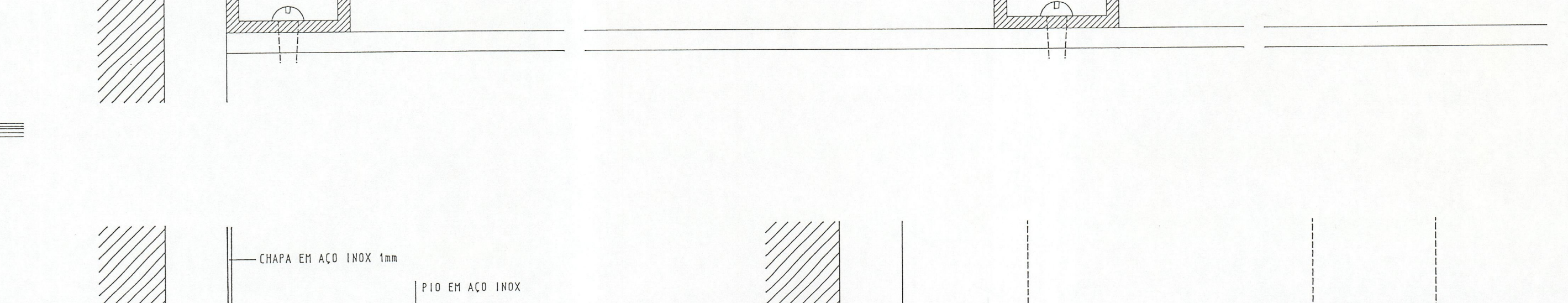
PORM. 2



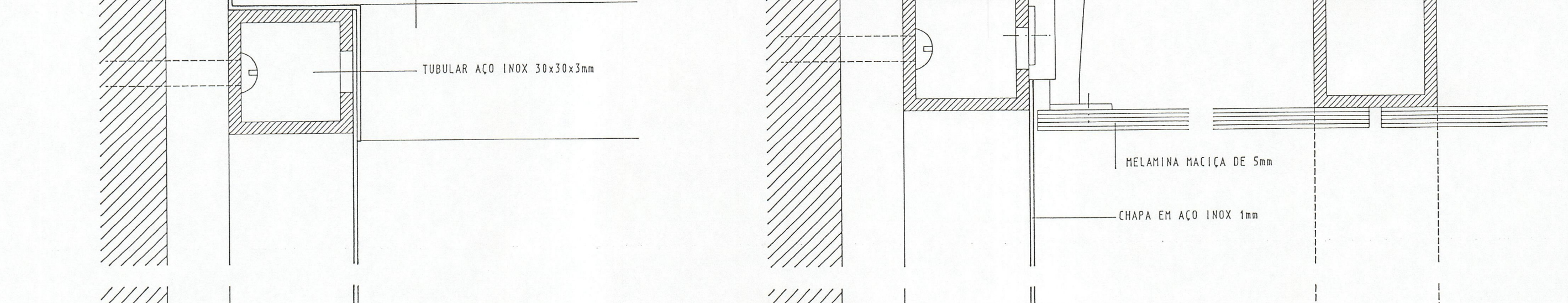
PORM. 3



PORM. 4



PORM. 5



PORM. 6