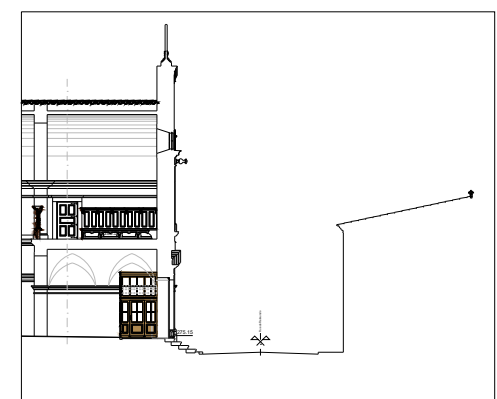
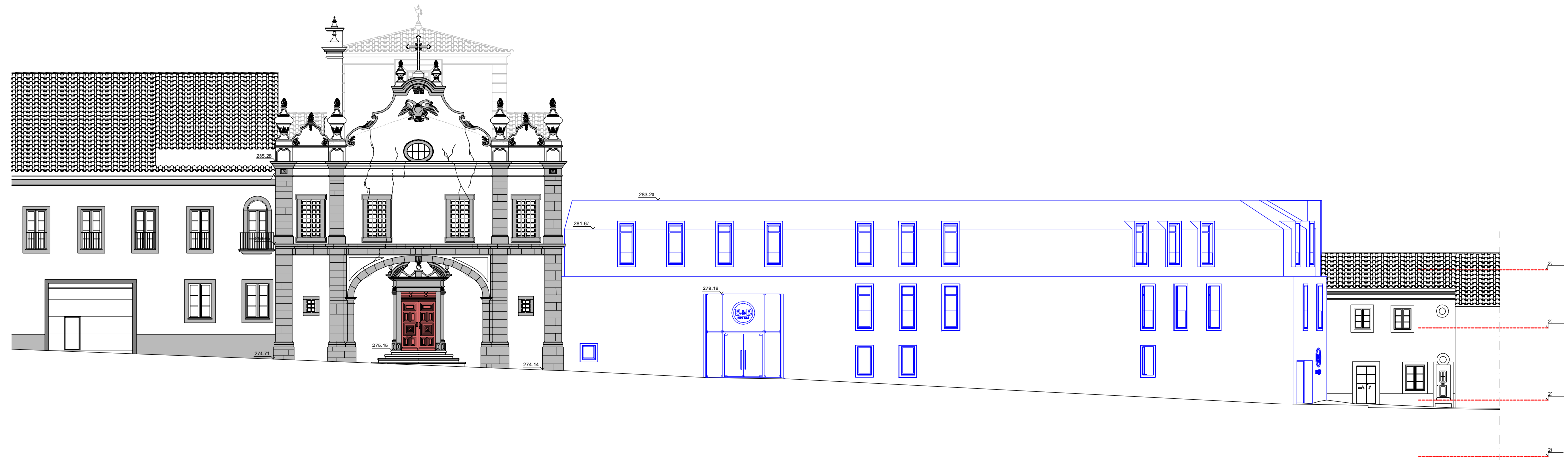


alçado principal - Rua do Raimundo



corte longitudinal AB





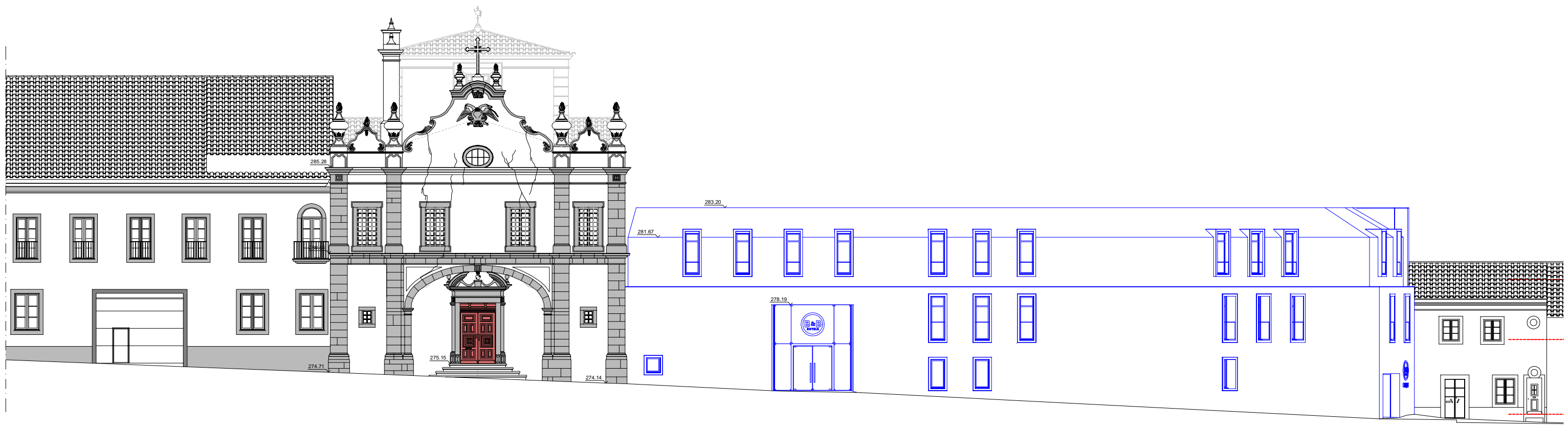
Alçado Principal (Rua do Raimundo)

295.00
290.00
285.00
280.00
275.00
270.00



Alçado Principal (Rua do Raimundo)

295.00
290.00
285.00
280.00
275.00
270.00



285.28

274.71

275.15

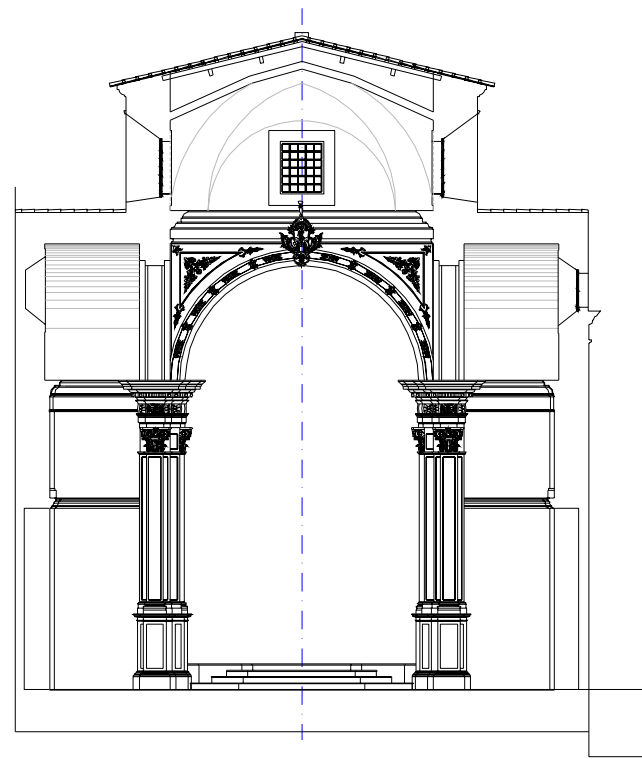
274.14

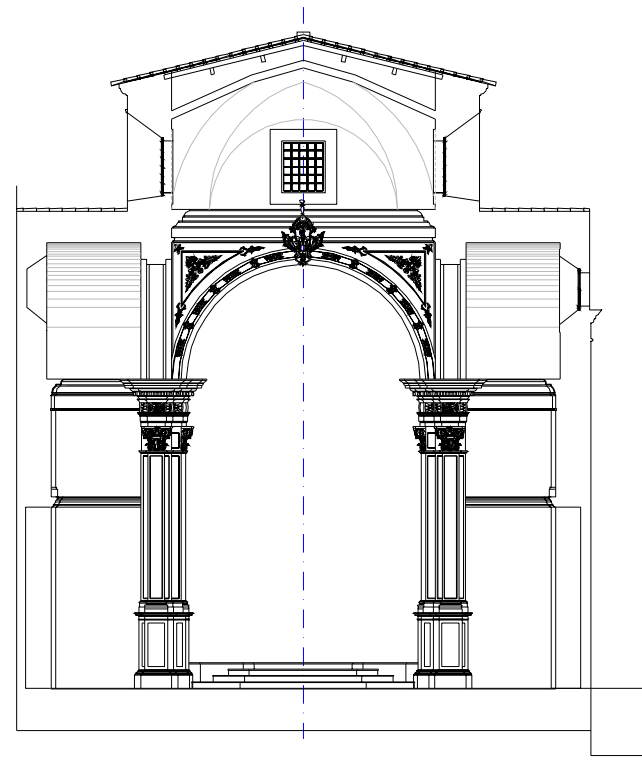
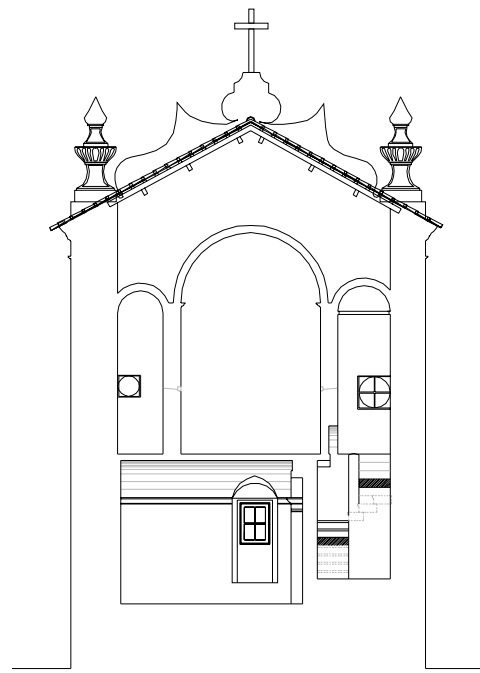
281.67

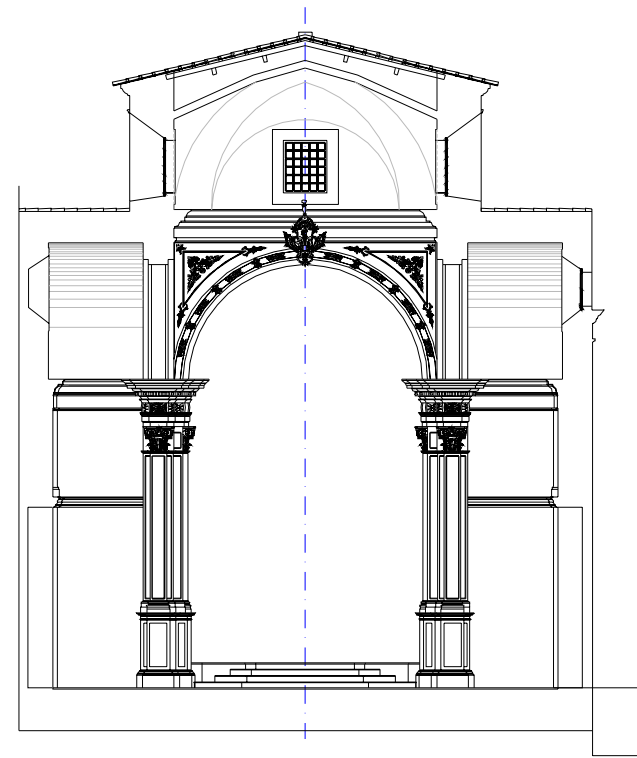
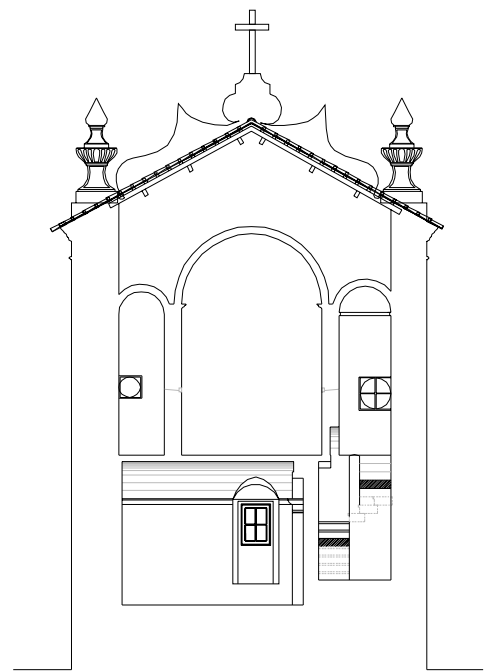
283.20

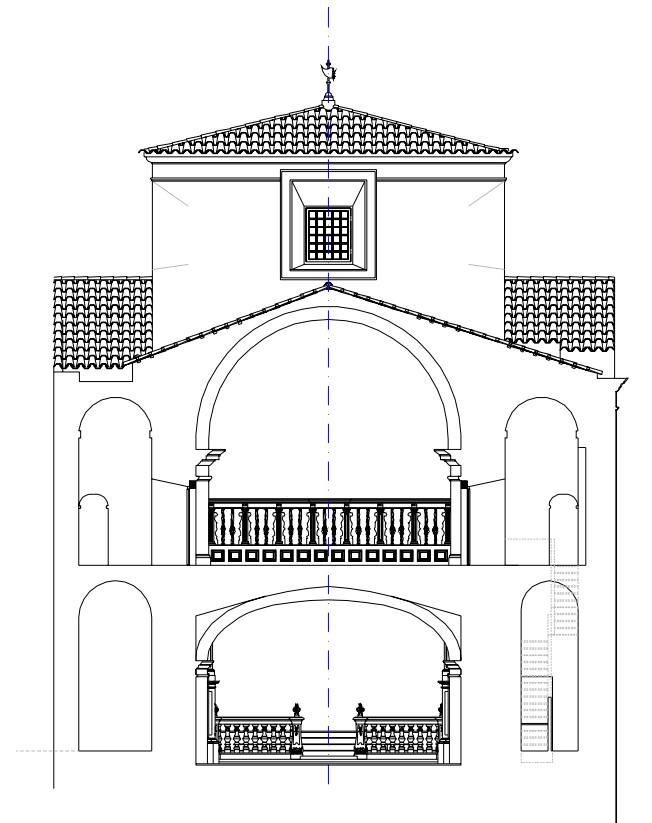
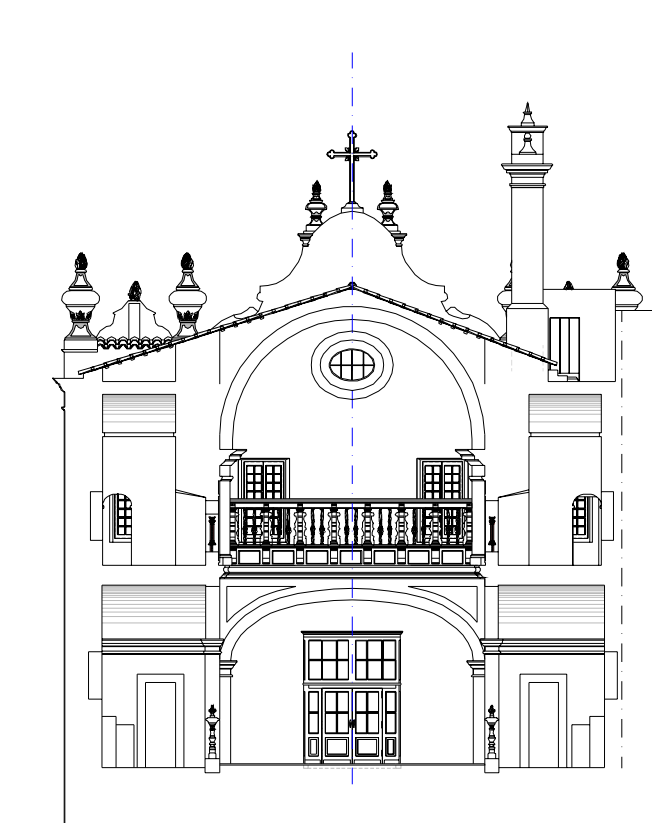
278.19

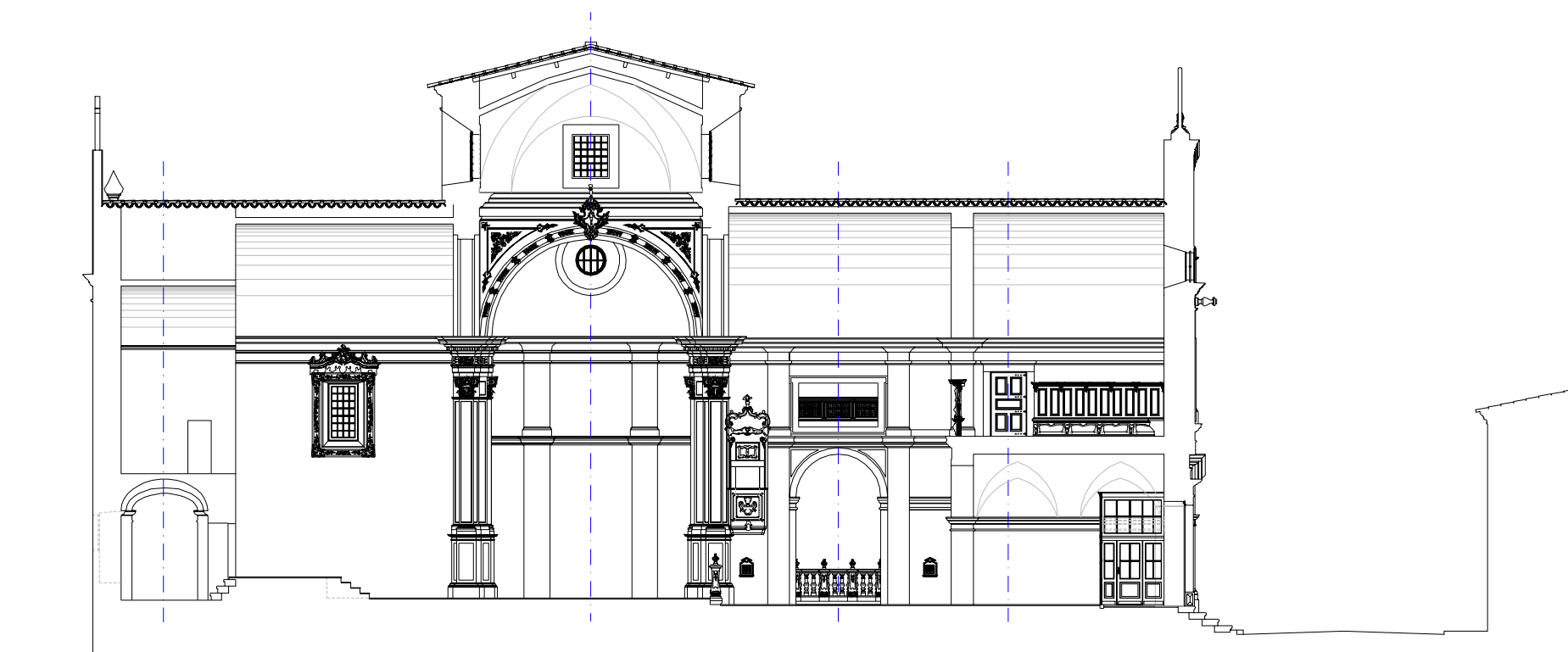
Alçado Principal (Rua do Raimundo)

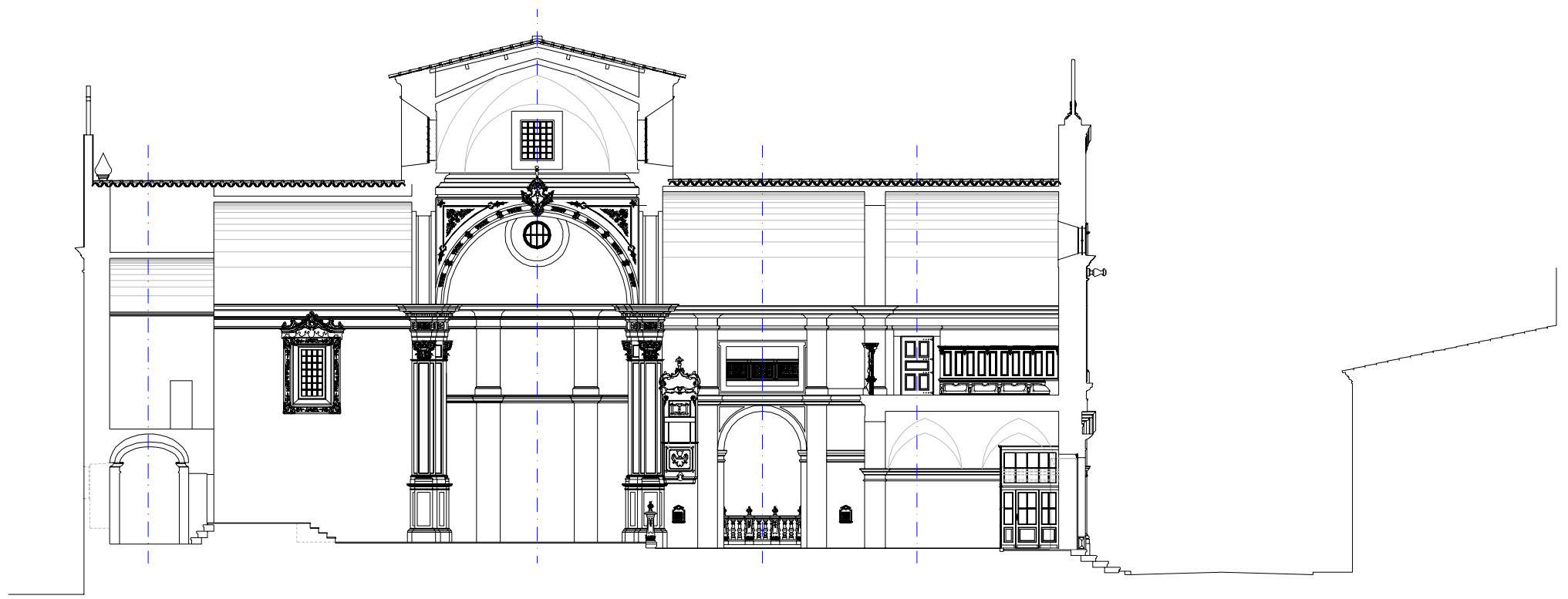


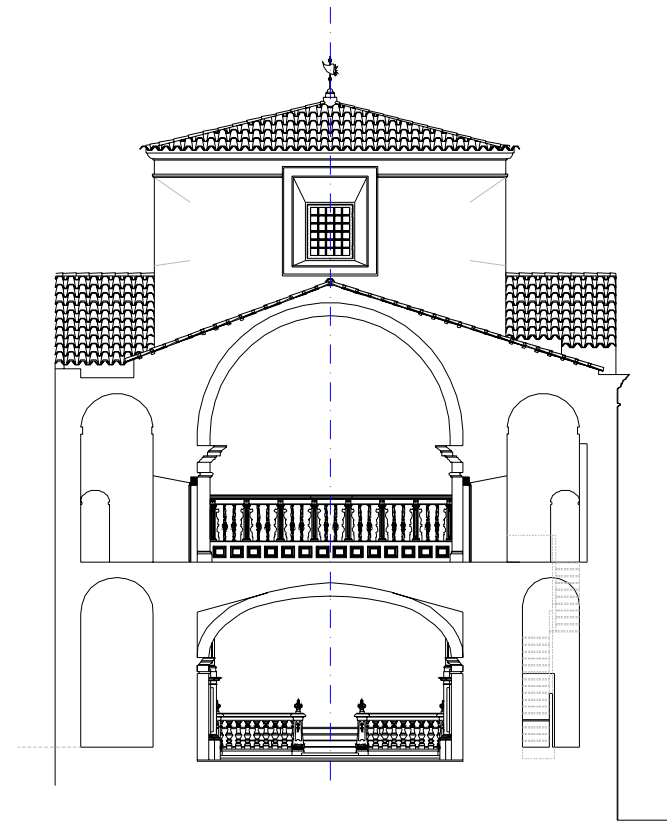
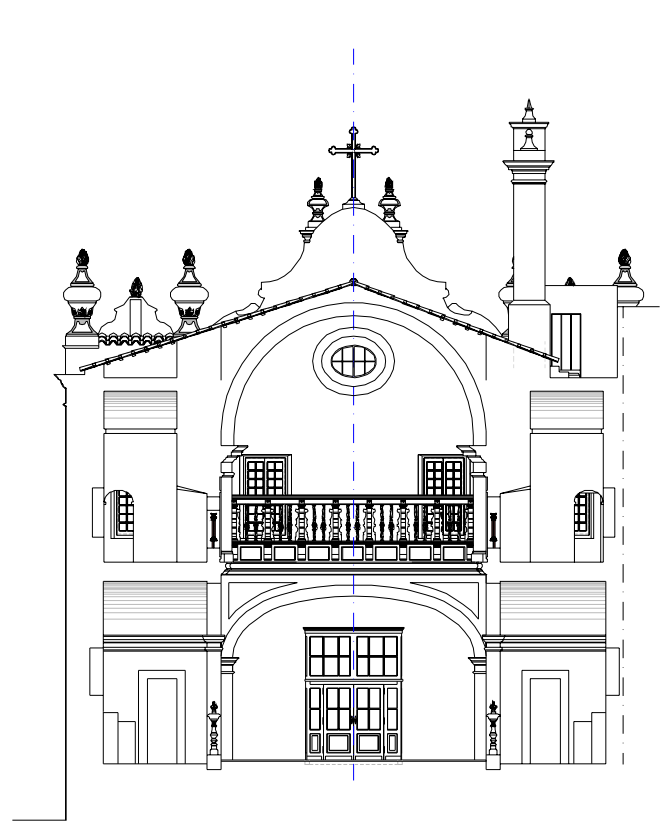


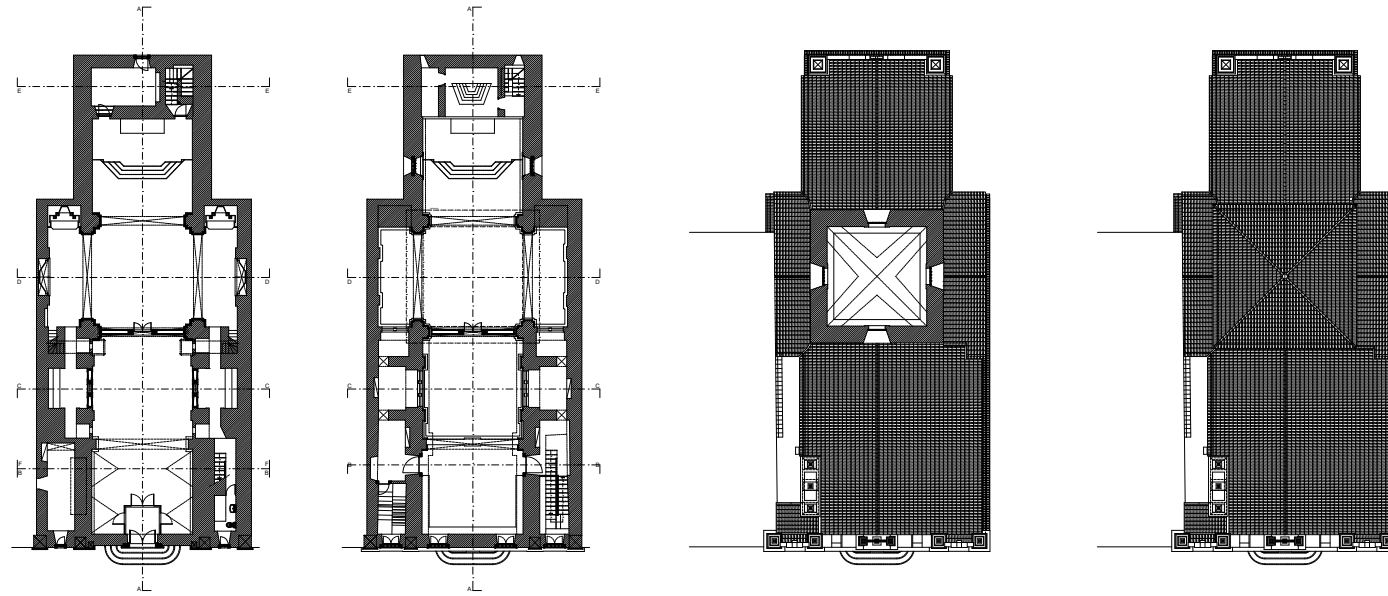




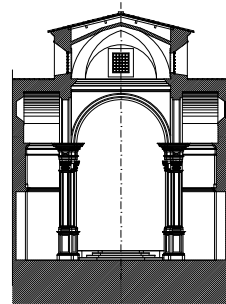




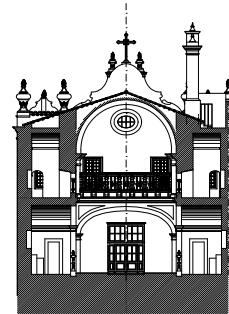




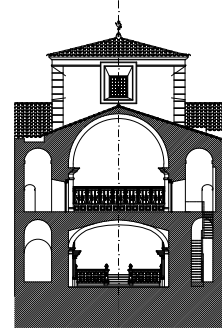
Corte A-A



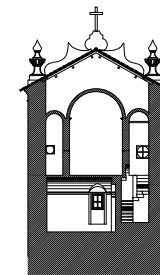
Corte D-D



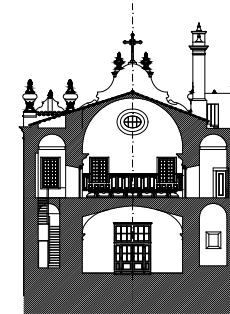
Corte C-C



Corte F-F



Corte E-E



Corte B-B



Alçado Principal (Rua de Ramonilha)

