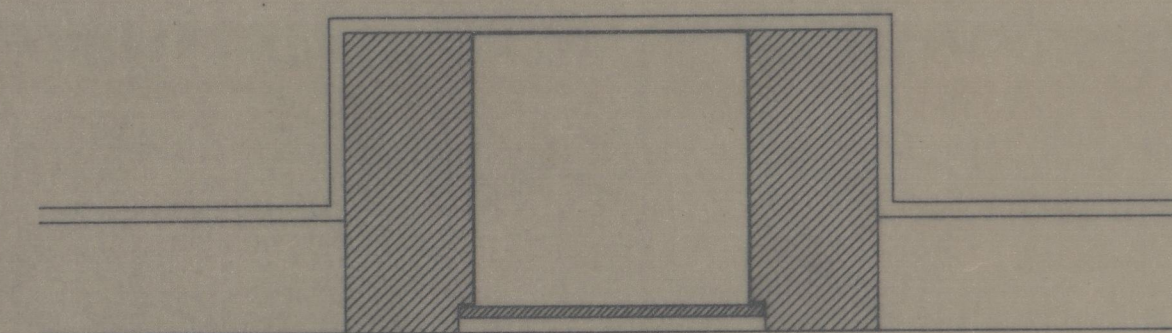
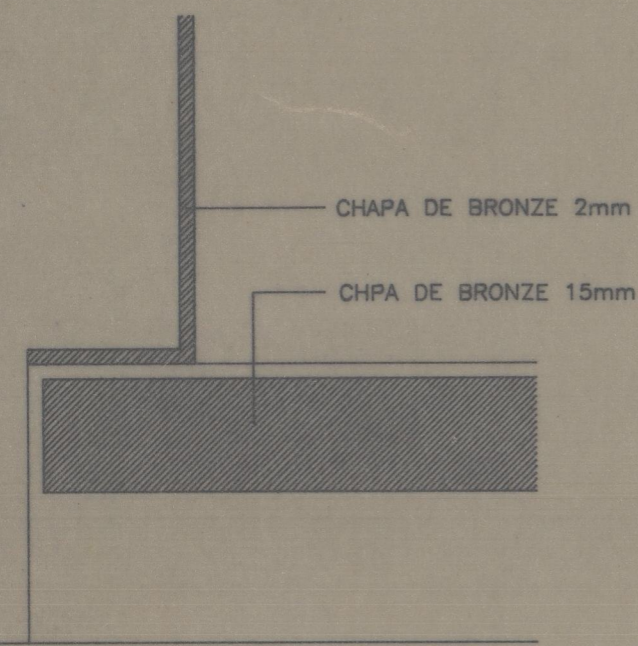


ALÇADO - SACRÁRIO

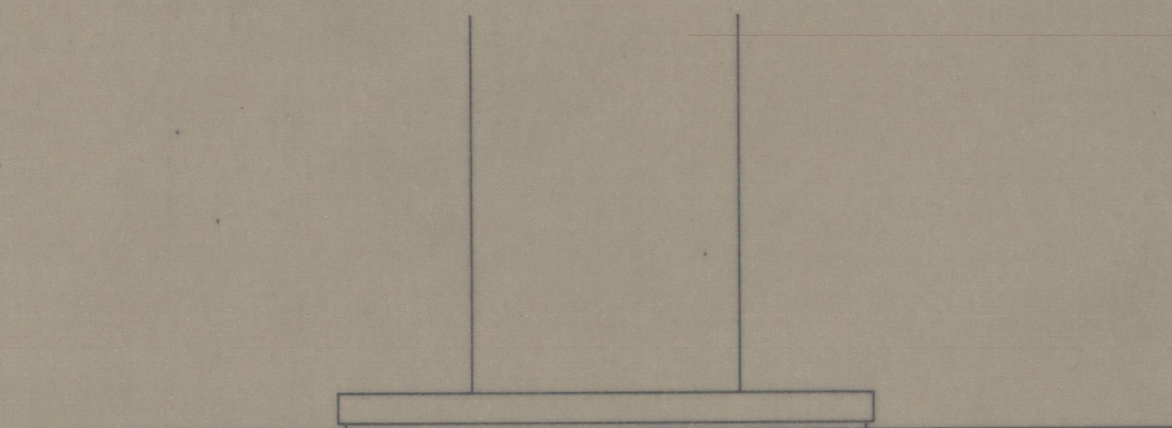


PLANTA - SACRÁRIO

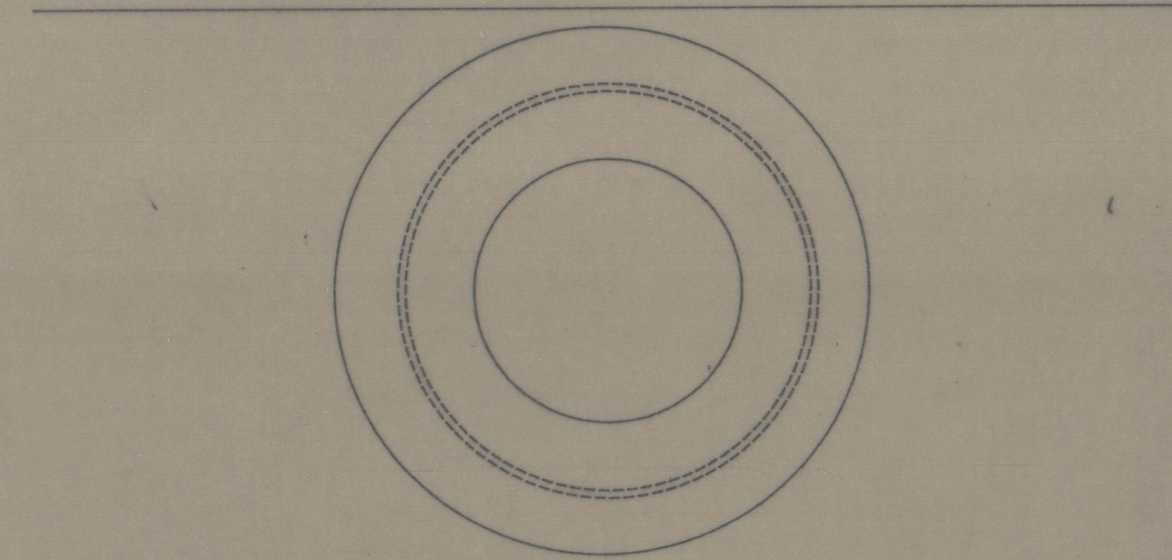


GRANITO

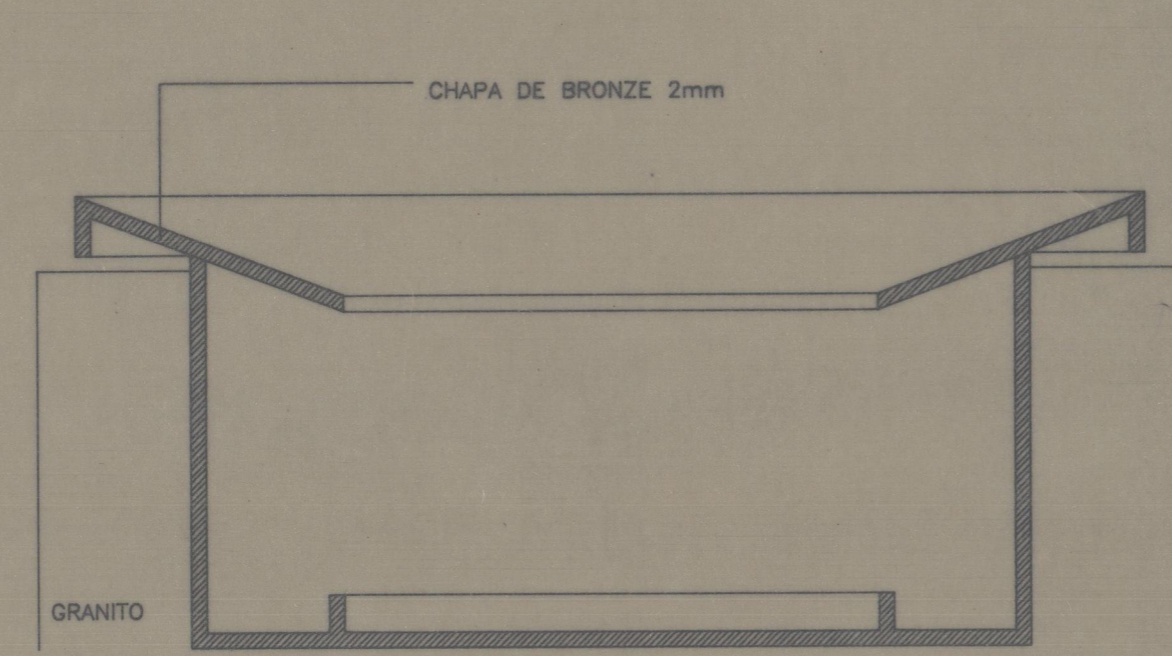
PORMENOR - PORTA DE SACRÁRIO



ALÇADO - CÍRIO

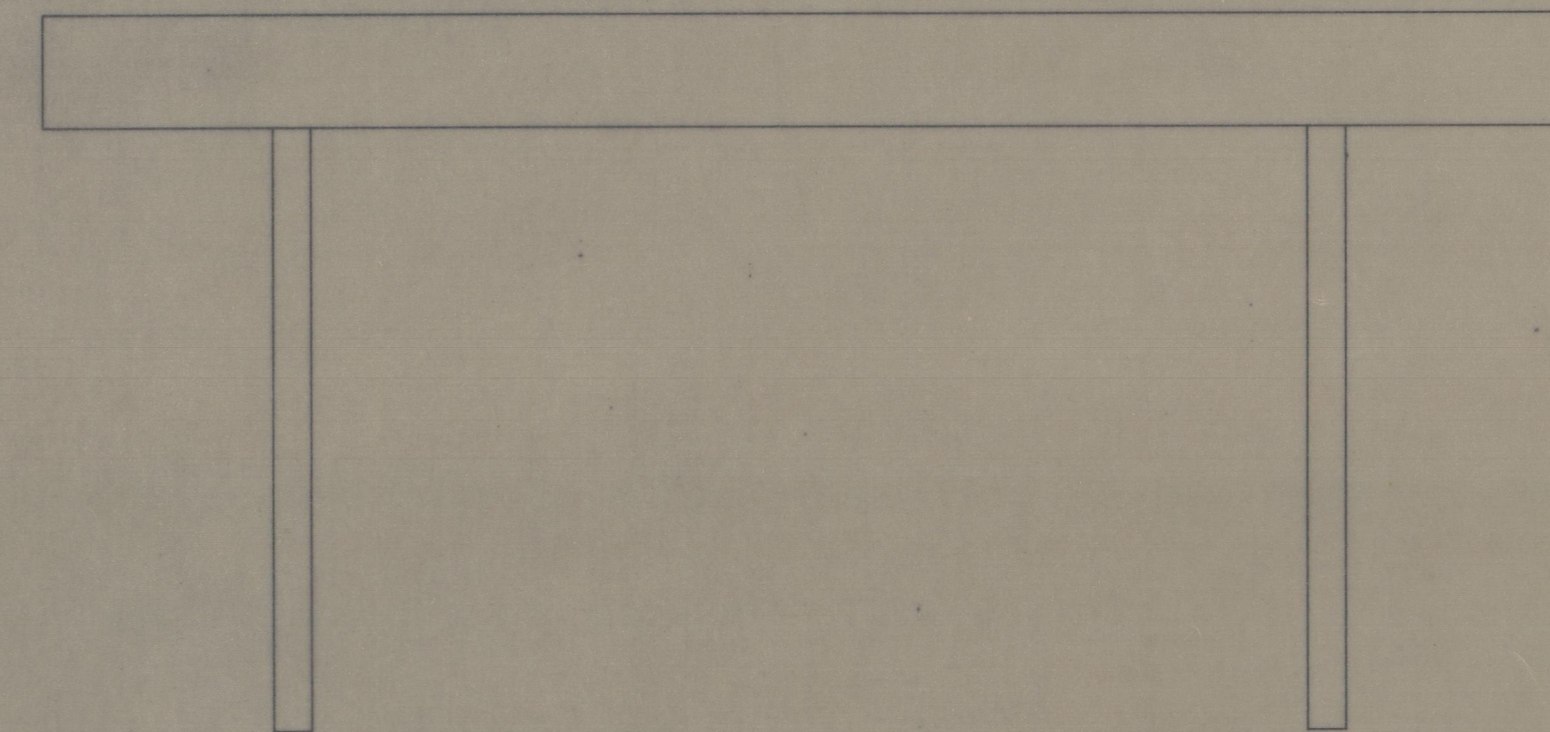


PLANTA - CÍRIO

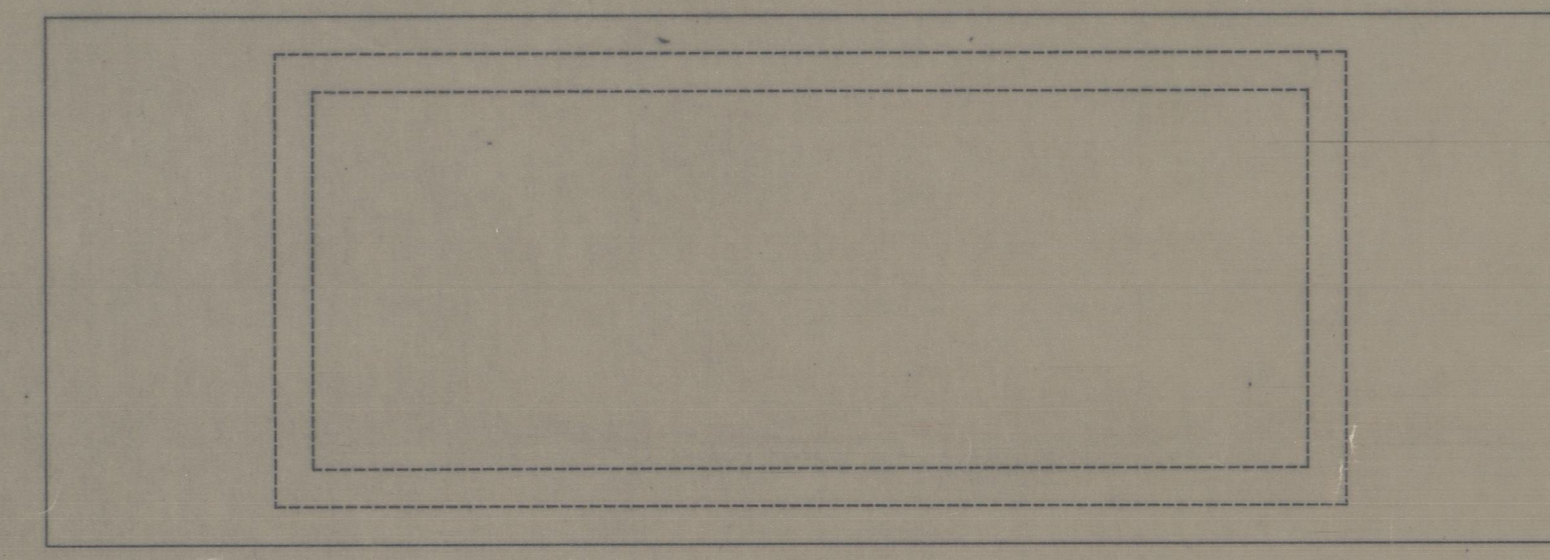


GRANITO

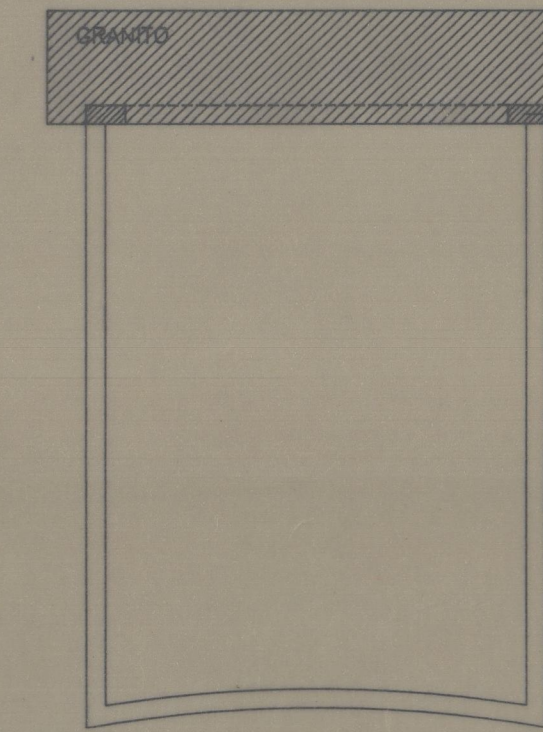
PORMENOR - CÍRIO



ALÇADO - ALTAR



PLANTA - ALTAR



CORTE TRANSVERSAL - ALTAR

IGREJA MATRIZ DE MEINEDO - LOUSADA	IPPC	001
PROJECTO DE RECUPERAÇÃO E RESTAURO	PROJECTO DE EXECUÇÃO	POR10-1
CAPELA DE Sto. TIRSO - ALTAR, CÍRIO E SACRÁRIO - PORMENORES		ESC.1:10,1:2,1:1
FRANCISCO CUNHA arquitecto		DEZ. 91

Est. 2987
h00h-4004