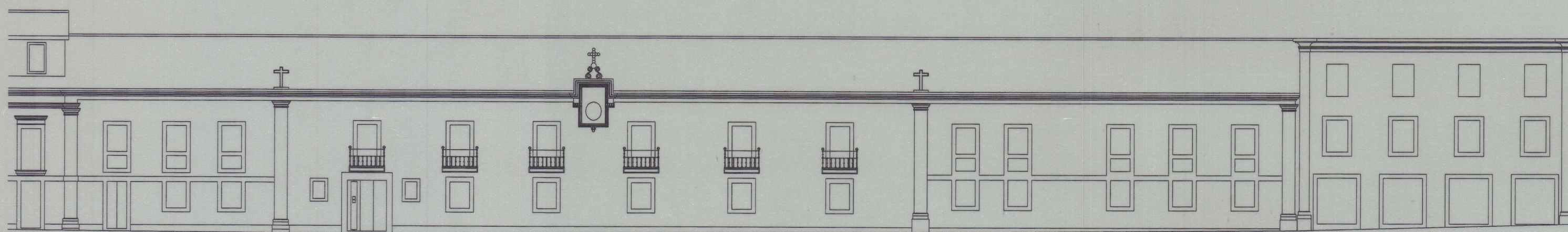
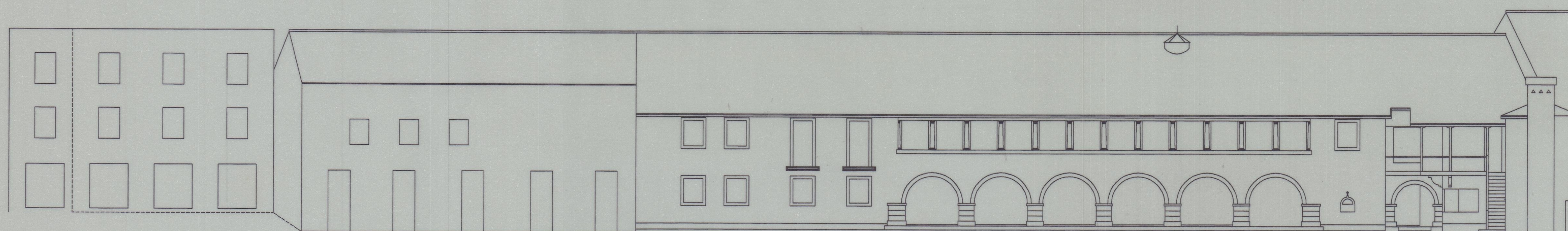


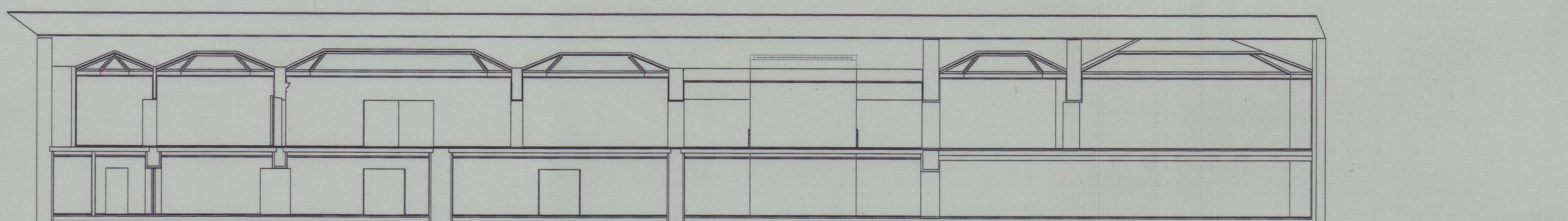
47-3346
 cda 1873



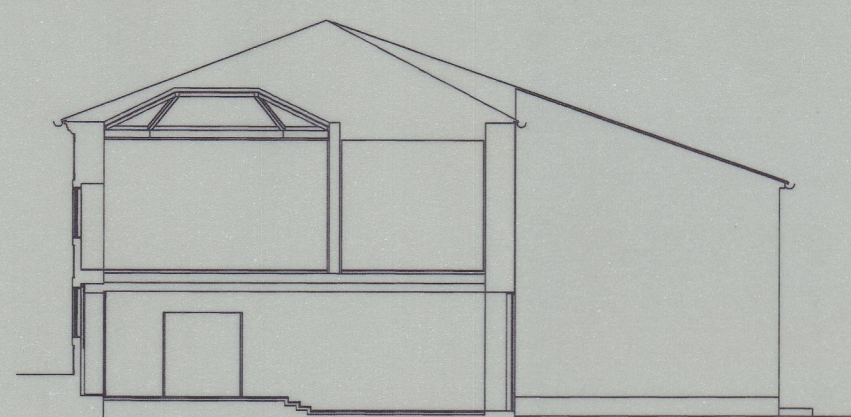
ALCADO SUL



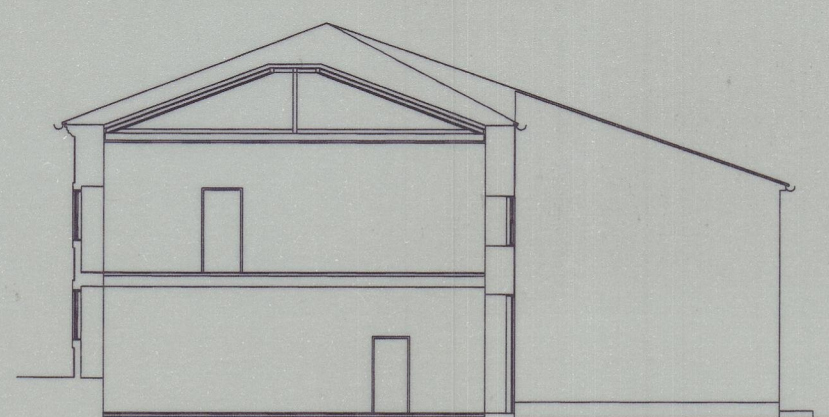
ALCADO NORTE



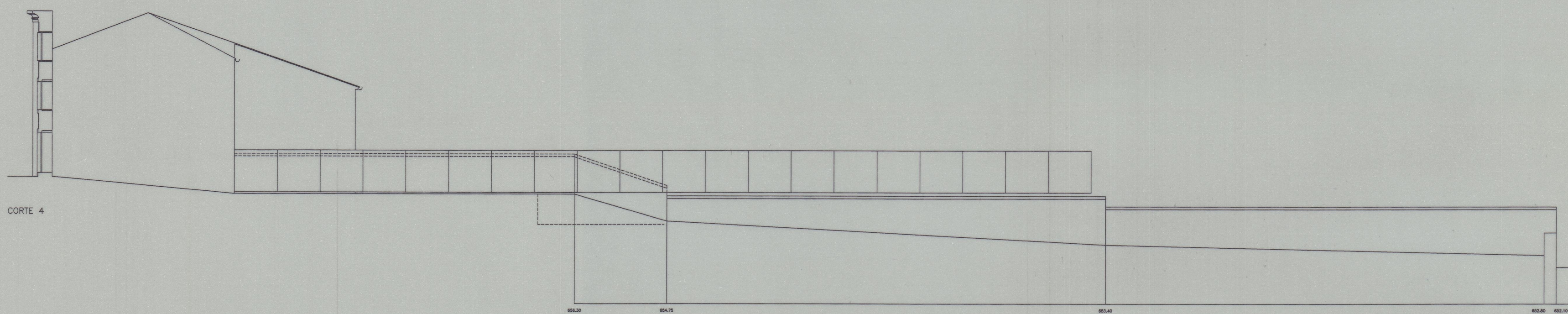
CORTE 1



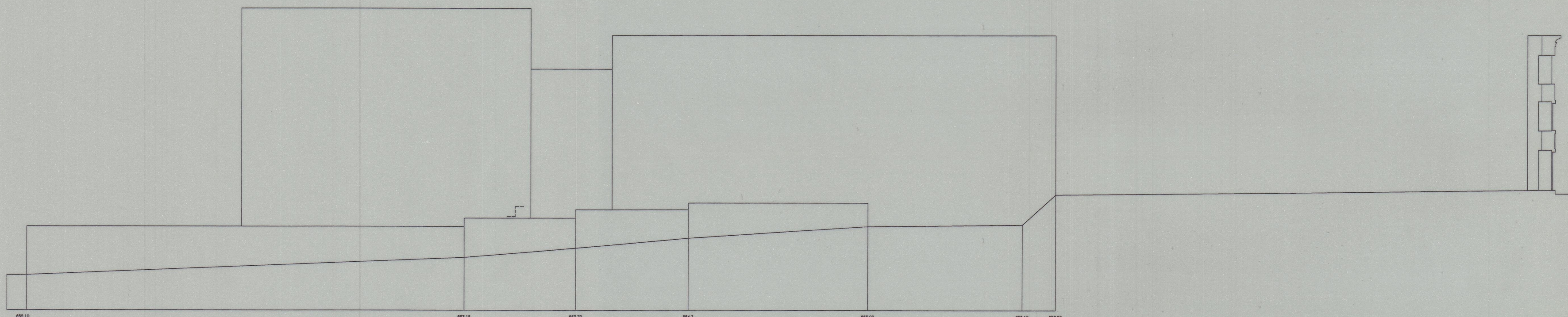
CORTE 2



CORTE 3



CORTE 4



CORTE 5

5
 Instituto ICS
 Direcção ICS/INMUS/MAB2/AP
 ACORDE
 Data: 1996
 Data: FEVEREIRO 1996
 A 12.00

INSTITUTO PORTUGUÊS DE MUSEUS - MUSEU DO ABADE DE BAÇAL - BRAGANÇA		Data	2/96	5
ANTE-PROJECTO - AMPLIAÇÃO DO MUSEU		Esc.	1/200	
EXISTENTE - ALÇADOS E CORTES	Proj.	Arq.	MAB2\AP\AC200E	95.31
A. PORTUGAL & M. M. REIS, ARQUITECTOS E ASSOCIADOS, LDA. RUA ANTÓNIO GRANJO, 108 4300 PORTO Tel(02)5102352 Fax(02)5102358				