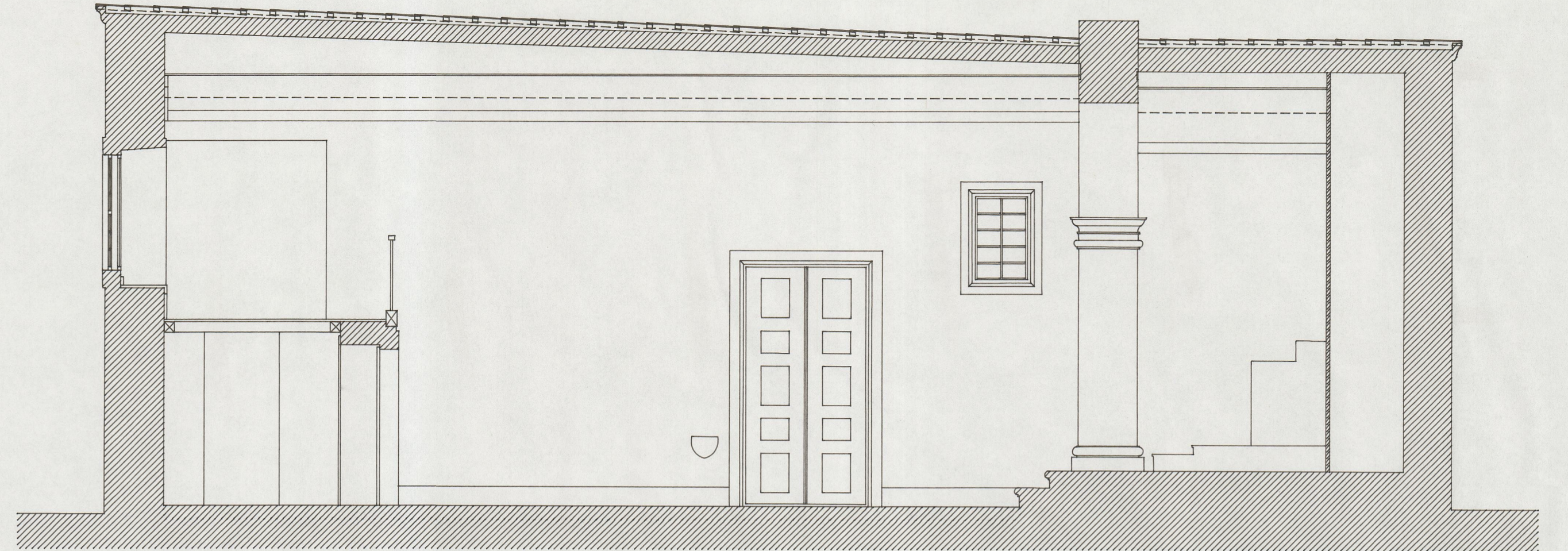
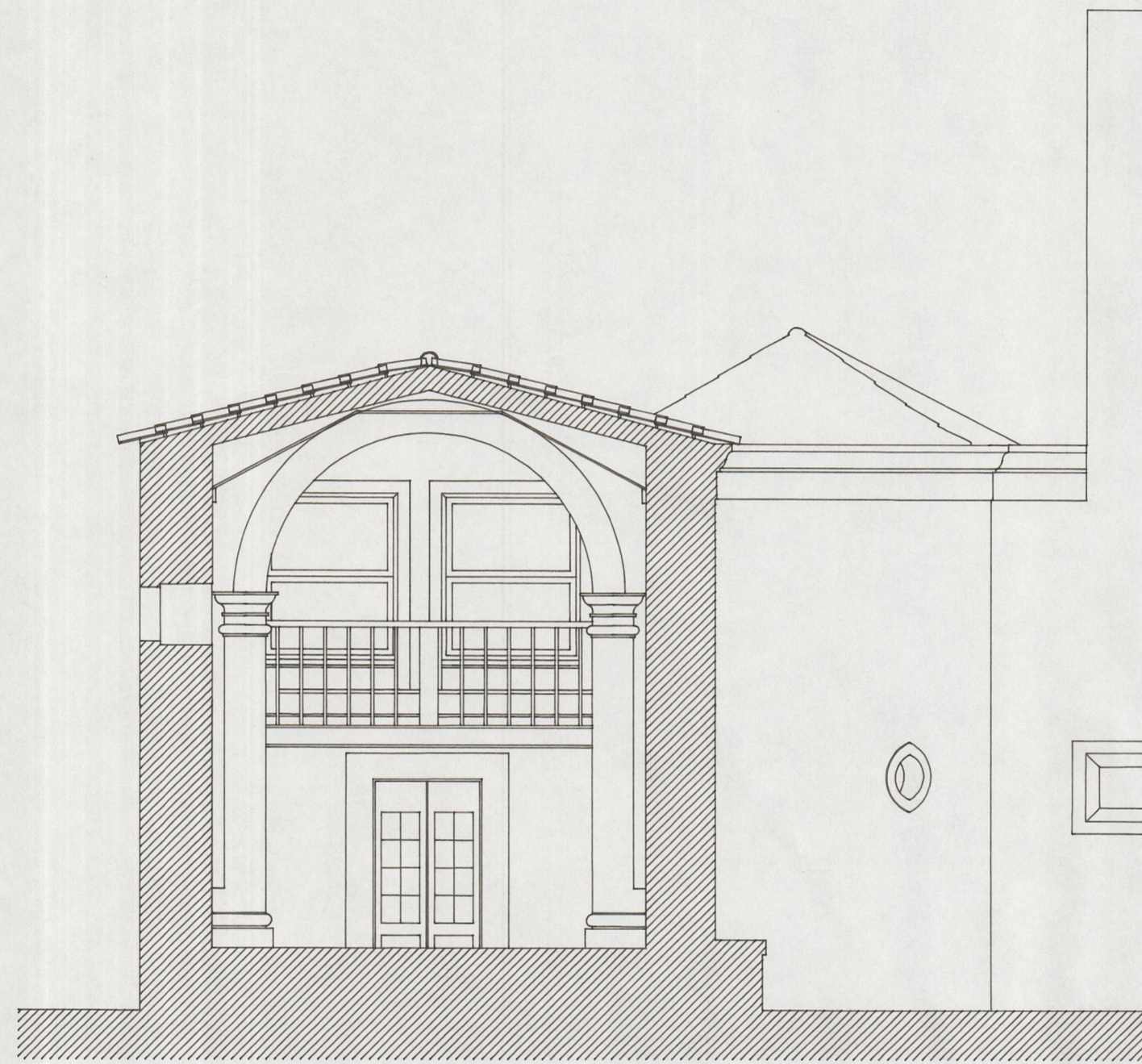


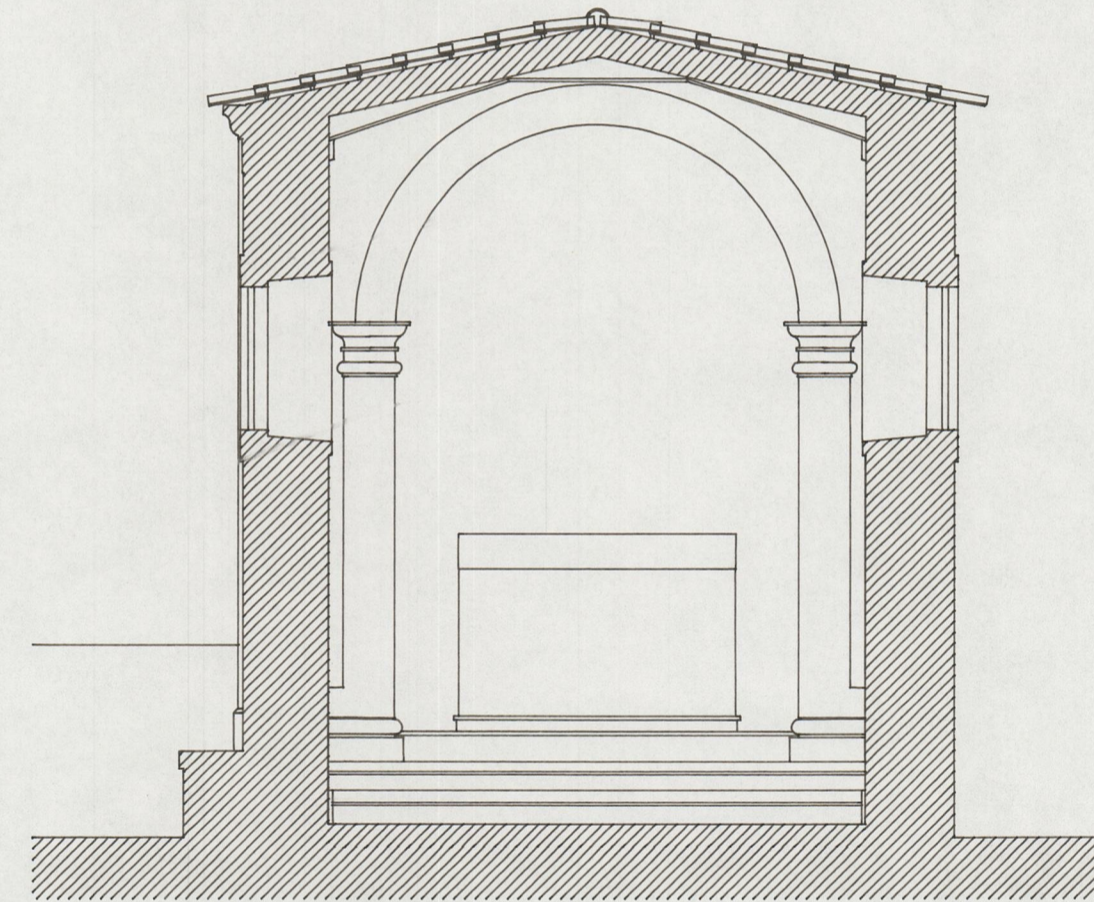
CORTE C1



CORTE C2



CORTE C3



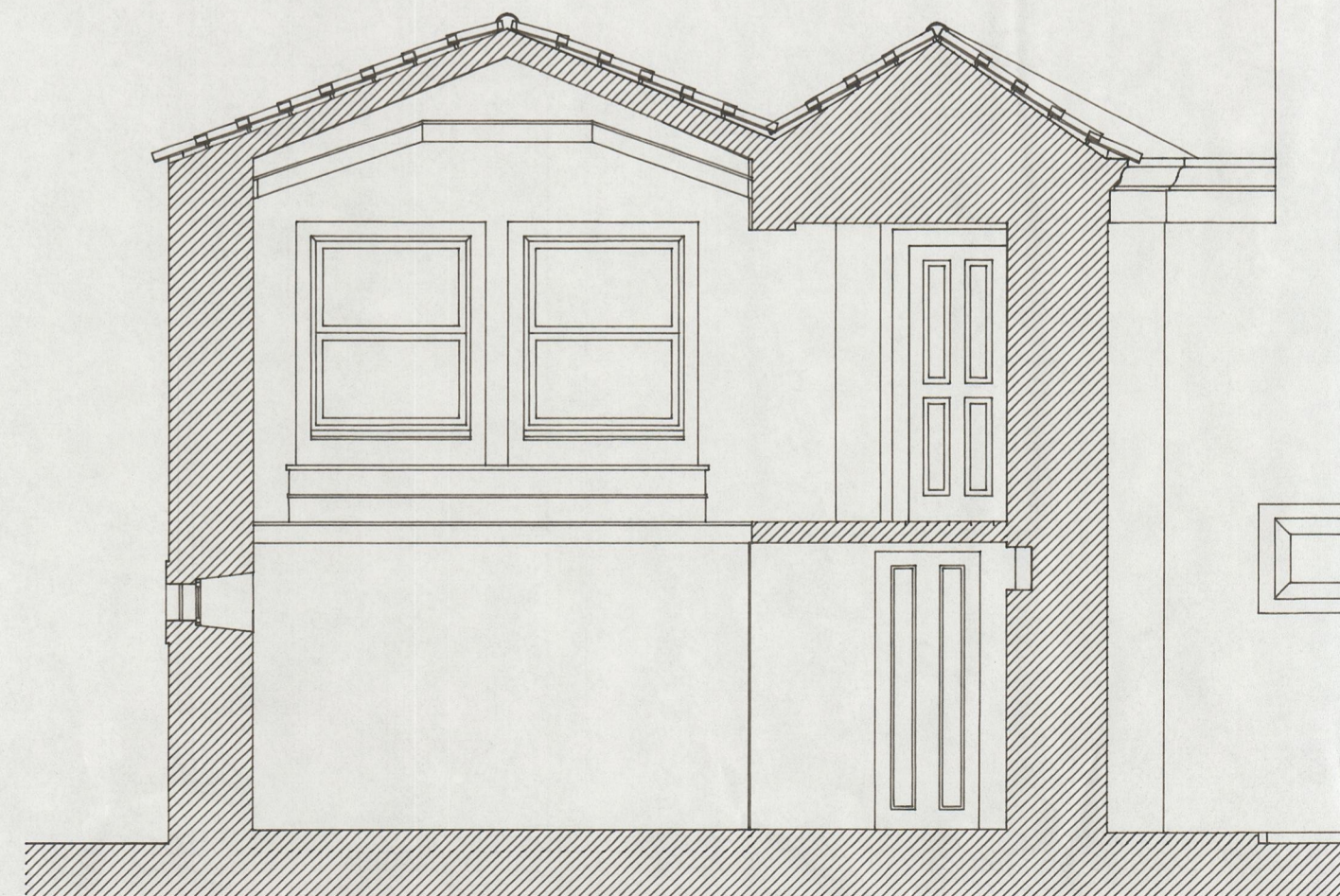
CORTE C4



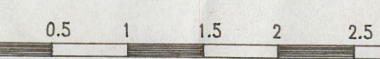
CORTE C5



CORTE C6



CORTE C7



Humberto Vieira / Abilio Mourão - Arquite

IPPAR	
CASA DE RAMALDE - PORTO	
RECUPERAÇÃO DA CAPELA - LEVANTAMENTO	Abril 1996
CORTES	Escala 1/50