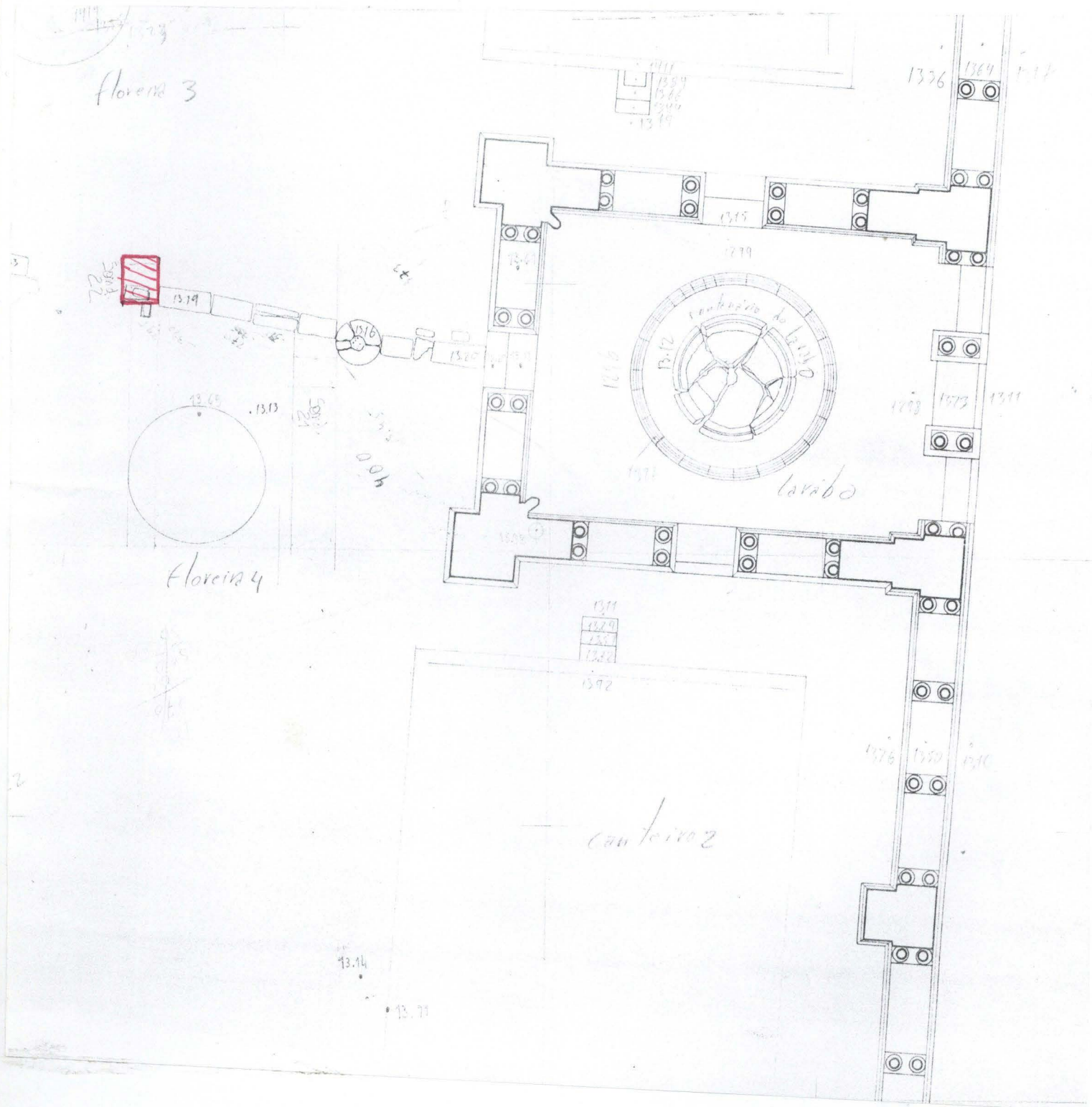


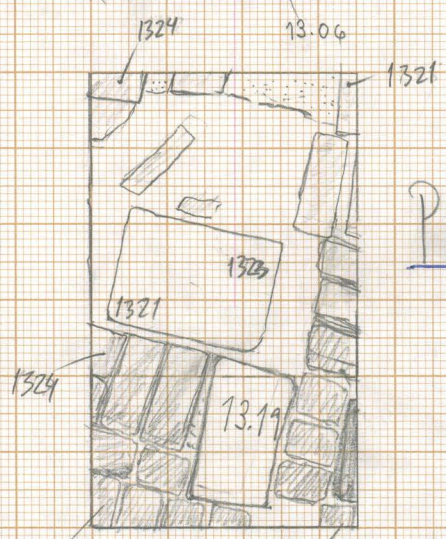
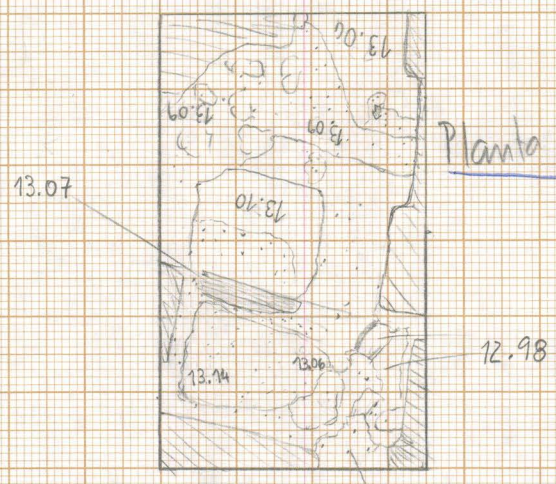
# SONDAGEM N: 22



Planta  
L.C. 1/20

Planta N=2 em 30/6/1998

alargada/ desenhado a 29/11/1998



Planta N=1

em 8/c/98

alargada em 28 Outubro 98

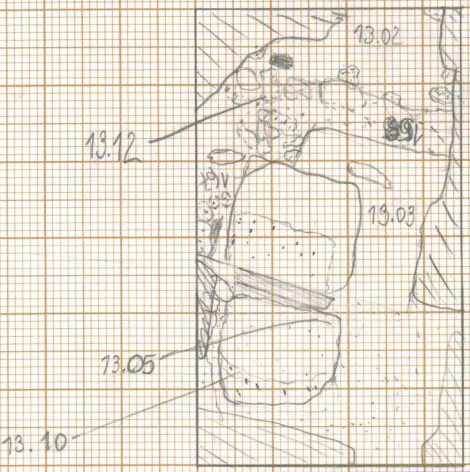
Sondagem n.º 22

SCV 98

Sond. 22

LSC. 1/20 ↑ N  
DES: Mónica Gimpa  
Luis Sebastian

13.50  
 1.13  
 -----  
 14.63  
 1.69  
 -----  
 12.94

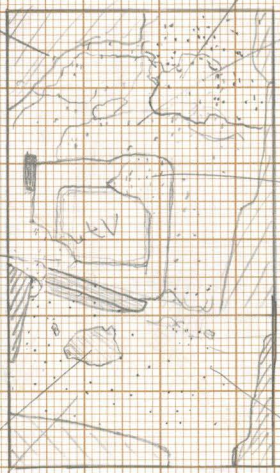


Planta N=3  
 16/7

2ª parte desenhada a: 2/5

12.94

12.87



Planta N=4

12 de Outubro de 98

2ª parte a 5/11/98

12.97

12.92

12.92

SCV 98

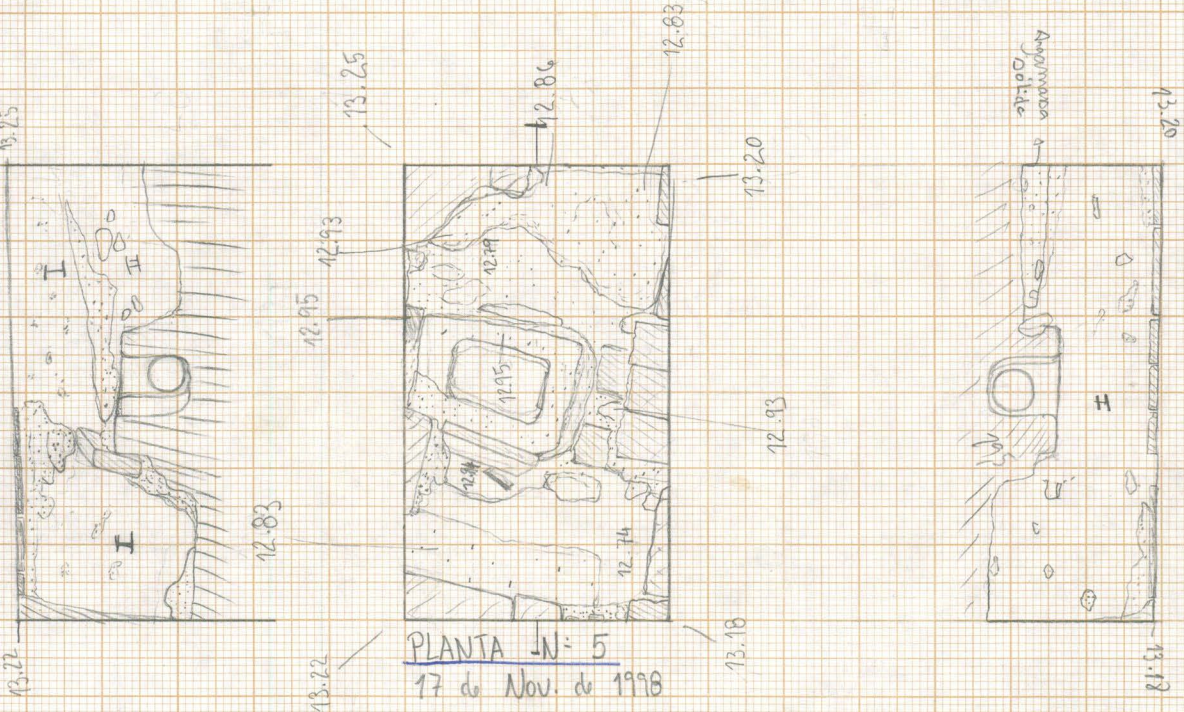
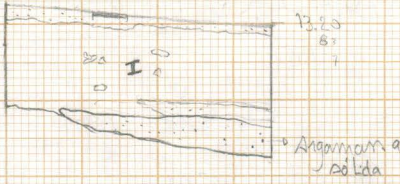
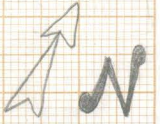
Sond. 22

Esc. 1/20 ↑ N  
 DES: Mónica Cinja  
 Luis Sebastian

12.94

12.89

46

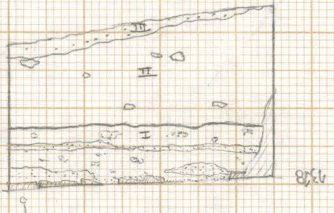


PLANTA - N: 5  
17 de Nov. de 1998

(1)

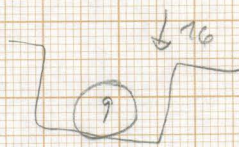
- I → Tava m. Aluado
- II → Tava barreira
- III → Argamassa

1/2  
1/2  
1/2



SCU 98  
usc. 1/20

Send. 22



Nivel: 14.73