



Desenhos de Campo

= Originalis =

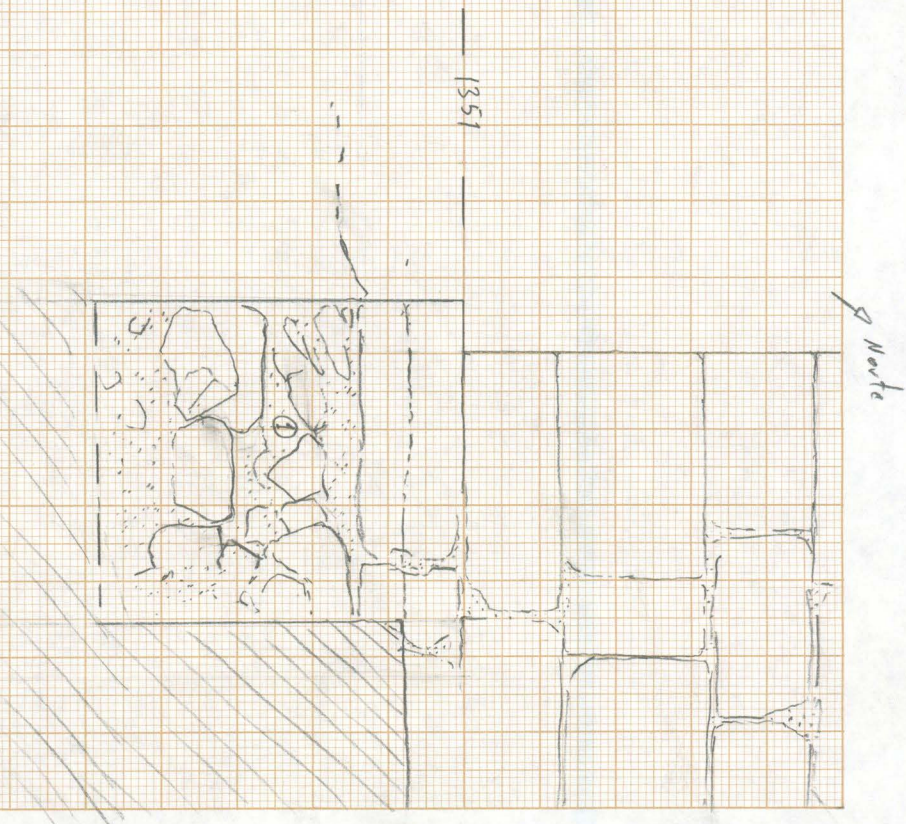
SCV / 98

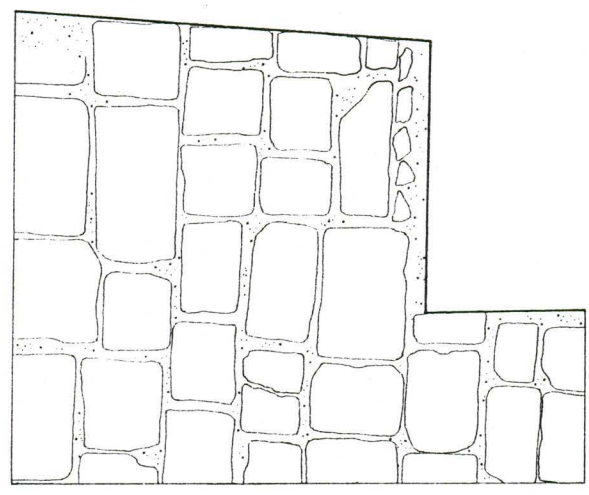
Sond. 14

esc. 1/20 ↑ N

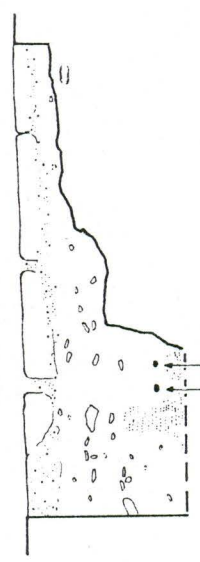
Des: Luis Sebastian  
Mónica Grijón

① - Blocos de calcário, magreiros  
e ardida dimenssã  
com argamassa fca  
(SAALC)

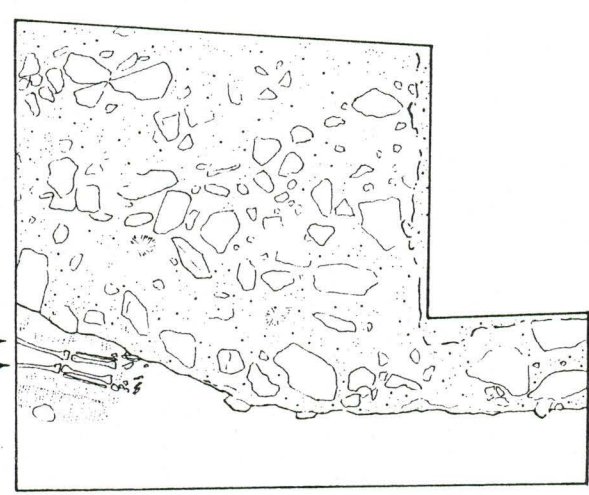




1ª Planta



Sepultura n° 64

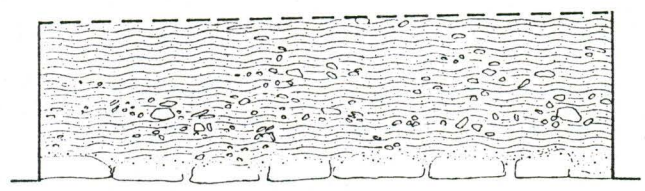


2ª Planta

- Argamassa

- I

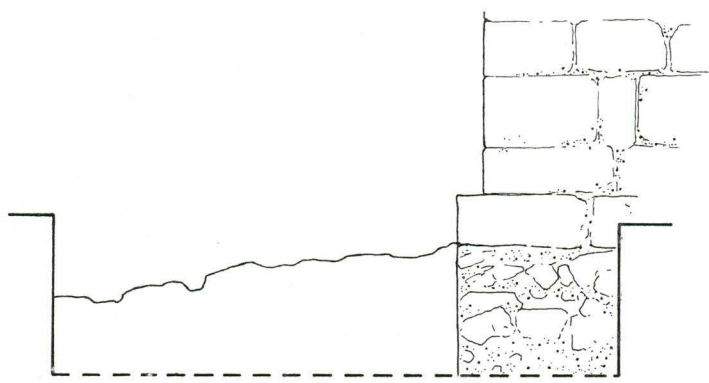
- Cal



Sondagem N° 14

SCV 98

Des: *Mônica Grima*  
*1/10/98*



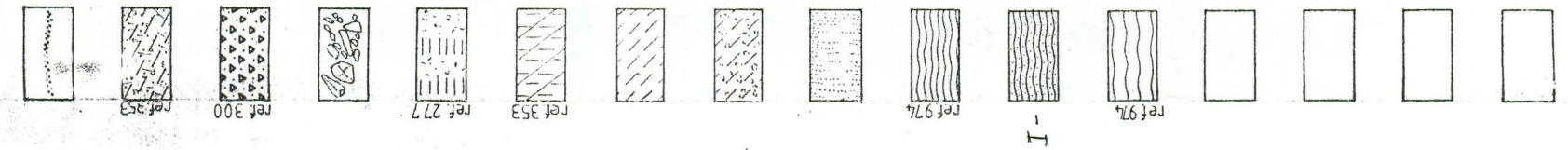
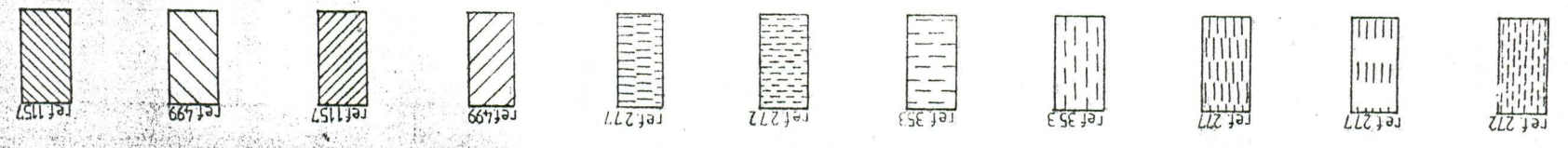
Sond. 14



SCV - Estratigrafia

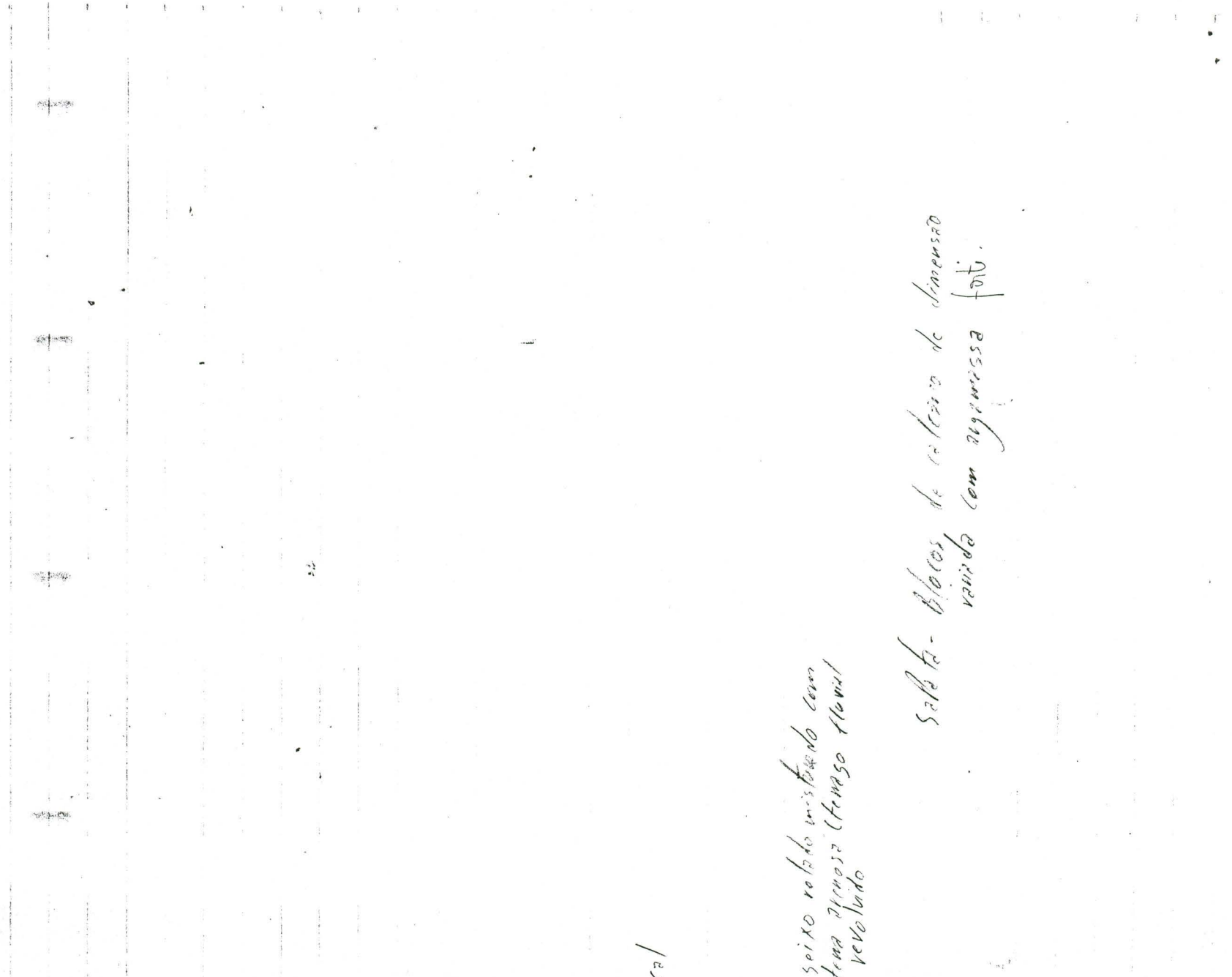
San Diego n. 14

28/5/18



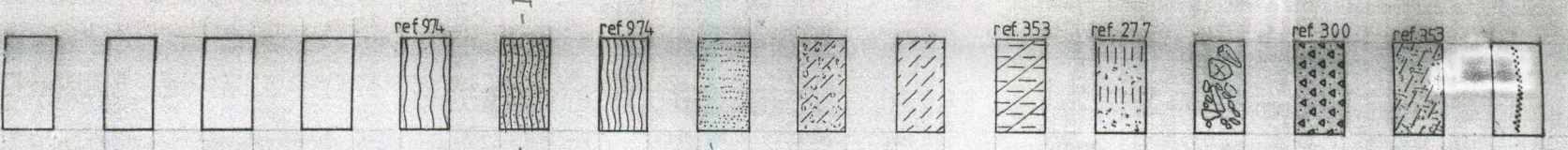
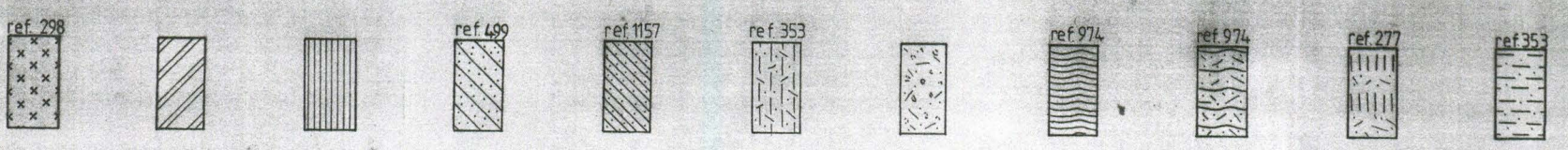
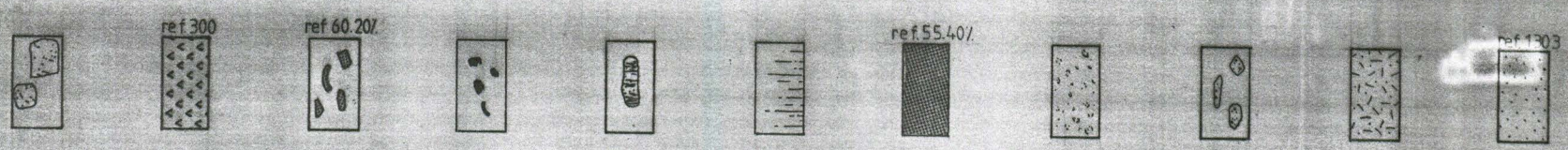
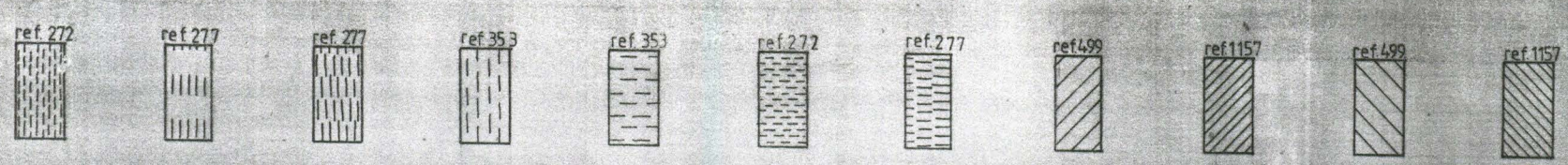
I - seixo relado misturado com  
 lama grossa (trunco fluvial  
 revelado)

Solo ta - Blocos de calcário de dimensão  
 variada com argamassa foto.



SCV - Estratigrafia

sondagem n. 14 28/5/98



I -  
 solo rochoso com  
 uma camada de  
 cascalho  
 SPT - Blocos de calcário de dimensão  
 variada com argamassa fofa.

-ca/