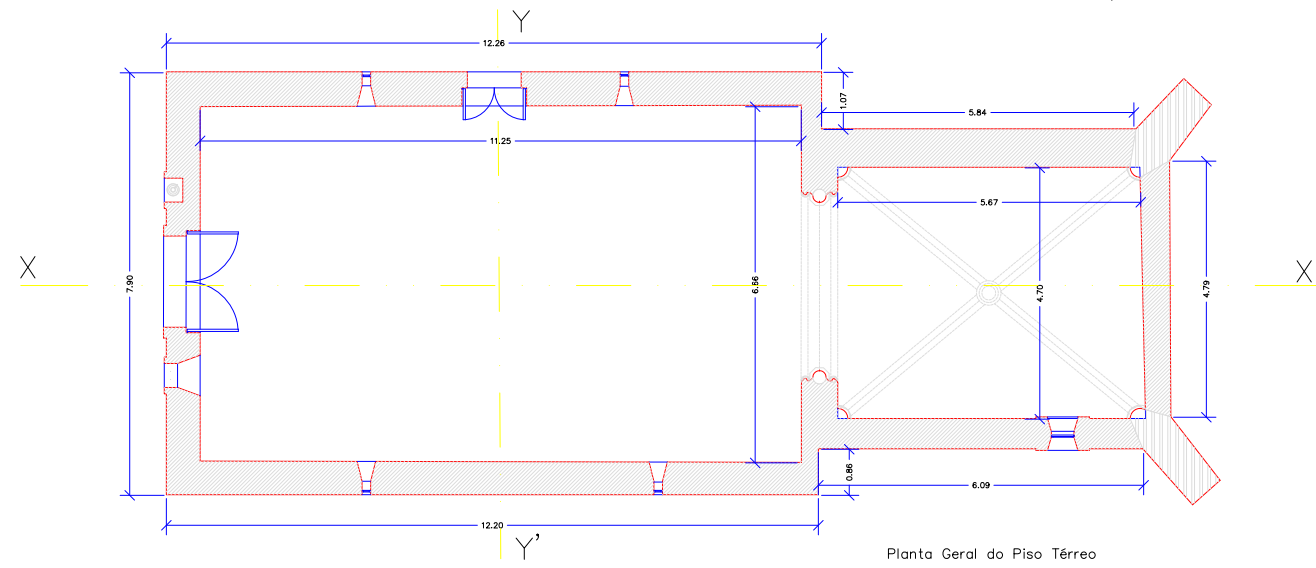
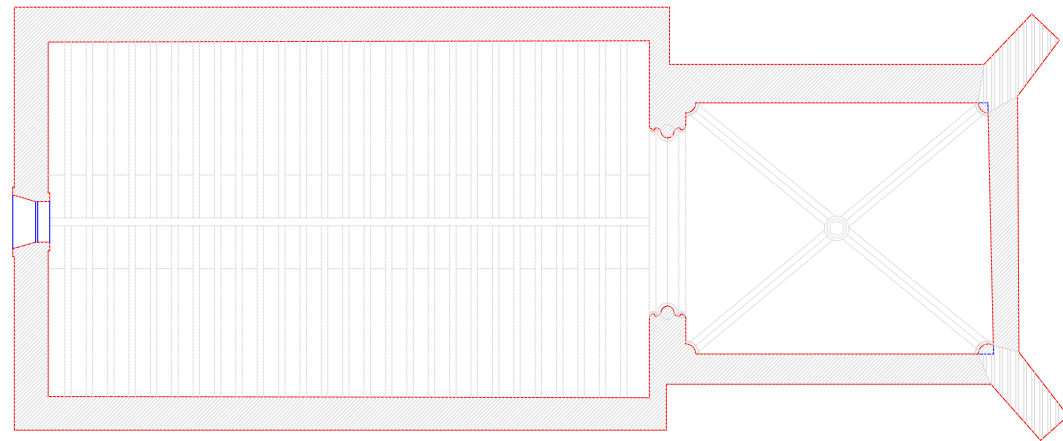


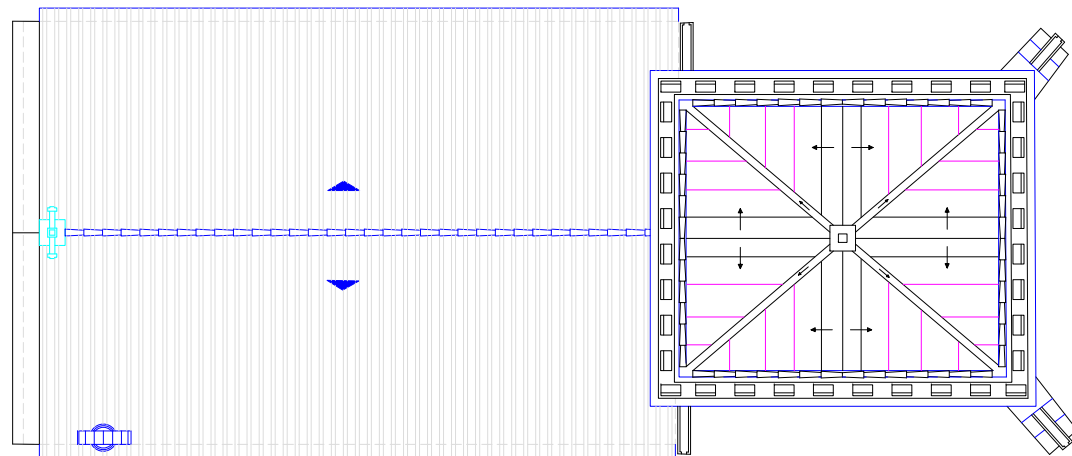
CAPELA DE S. JORGE – ALJUBARROTA



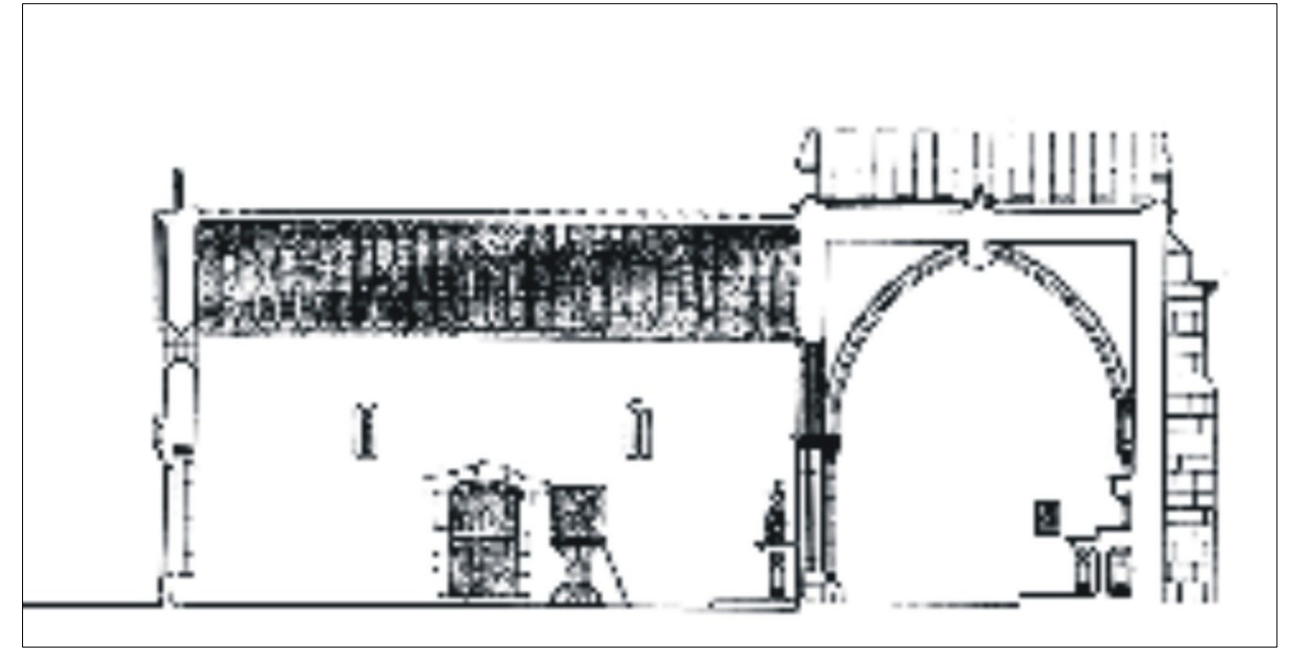
Planta Geral do Piso Térreo



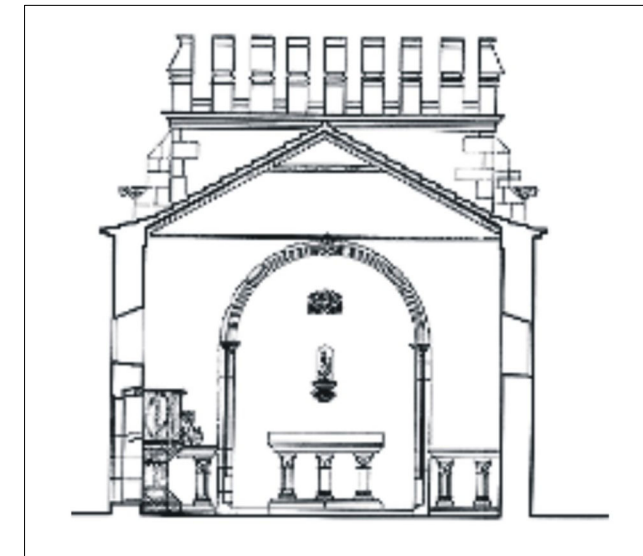
Planta Geral do Tecto



Planta Geral da Cobertura



Corte Longitudinal XX'



Corte Transversal YY'

D.o. : IPPAR, Direcção Regional de Coimbra

Local : CAPELA de S. Jorge
ALJUBARROTA

Técnico Responsável:

Parte : Arquitectura

Fase : Levantamento do Existente

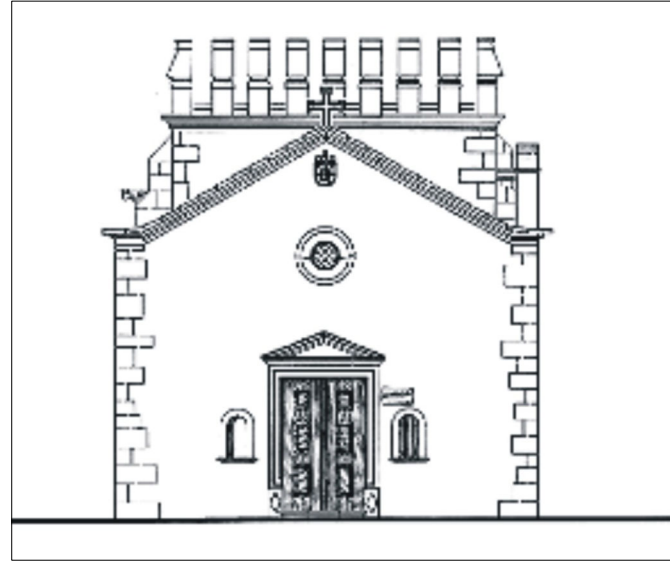
Desenhos :

PLANTAS e CORTES

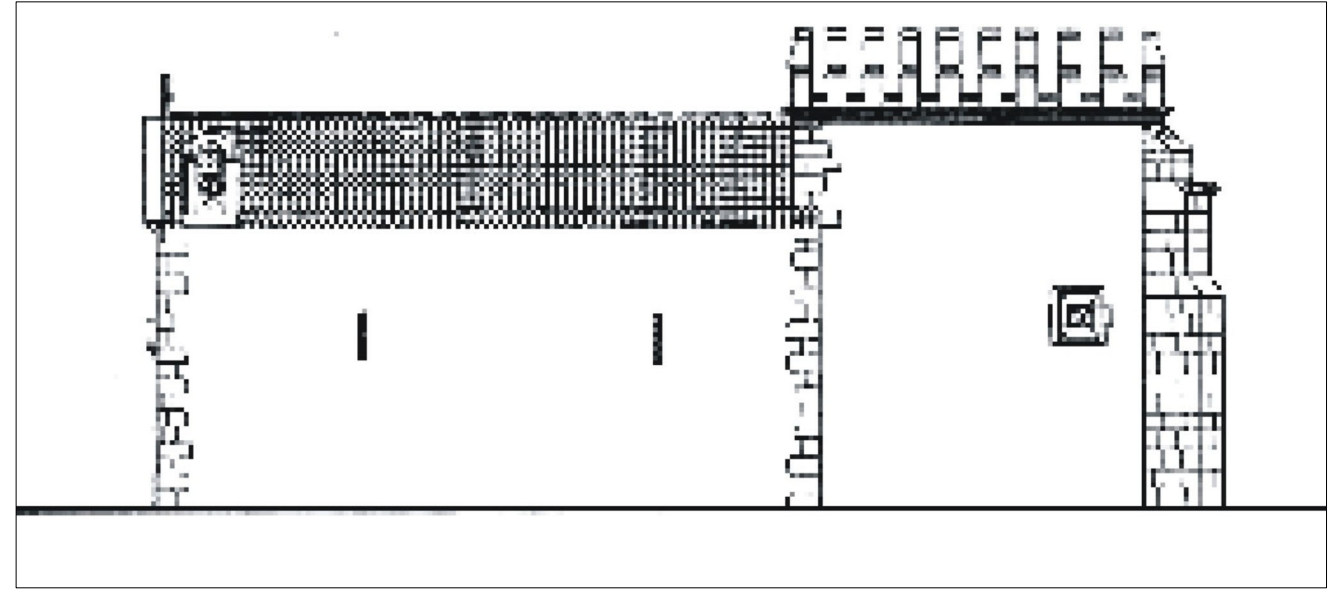
Escala : 1/100

DG (--) 01 a 05

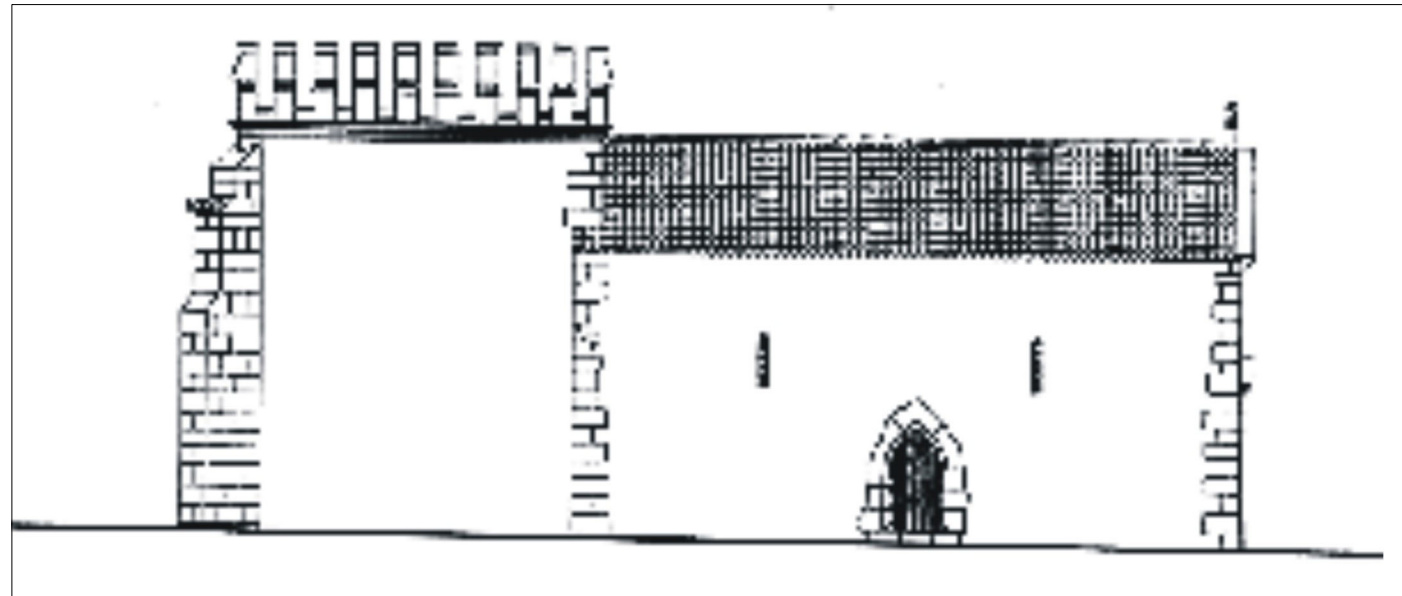
Folha nº
1



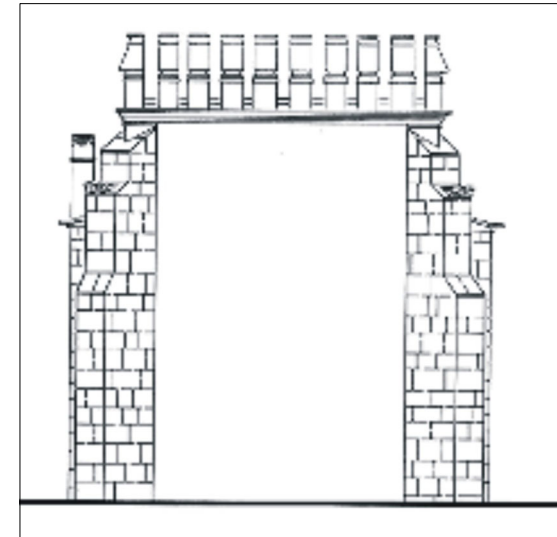
Alçado Poente



Alçado Sul



Alçado Norte



Alçado Nascente

d.o. : IPPAR, Direcção Regional de Coimbra
 Local : CAPELA de S. Jorge
 ALJUBARROTA

Técnico Responsável:

Parte : Arquitectura
 Fase : Levantamento do Existente

Desenhos :
 ALÇADOS

Escala : 1/100

DG (-) 06 a 09

Folha n.
 2