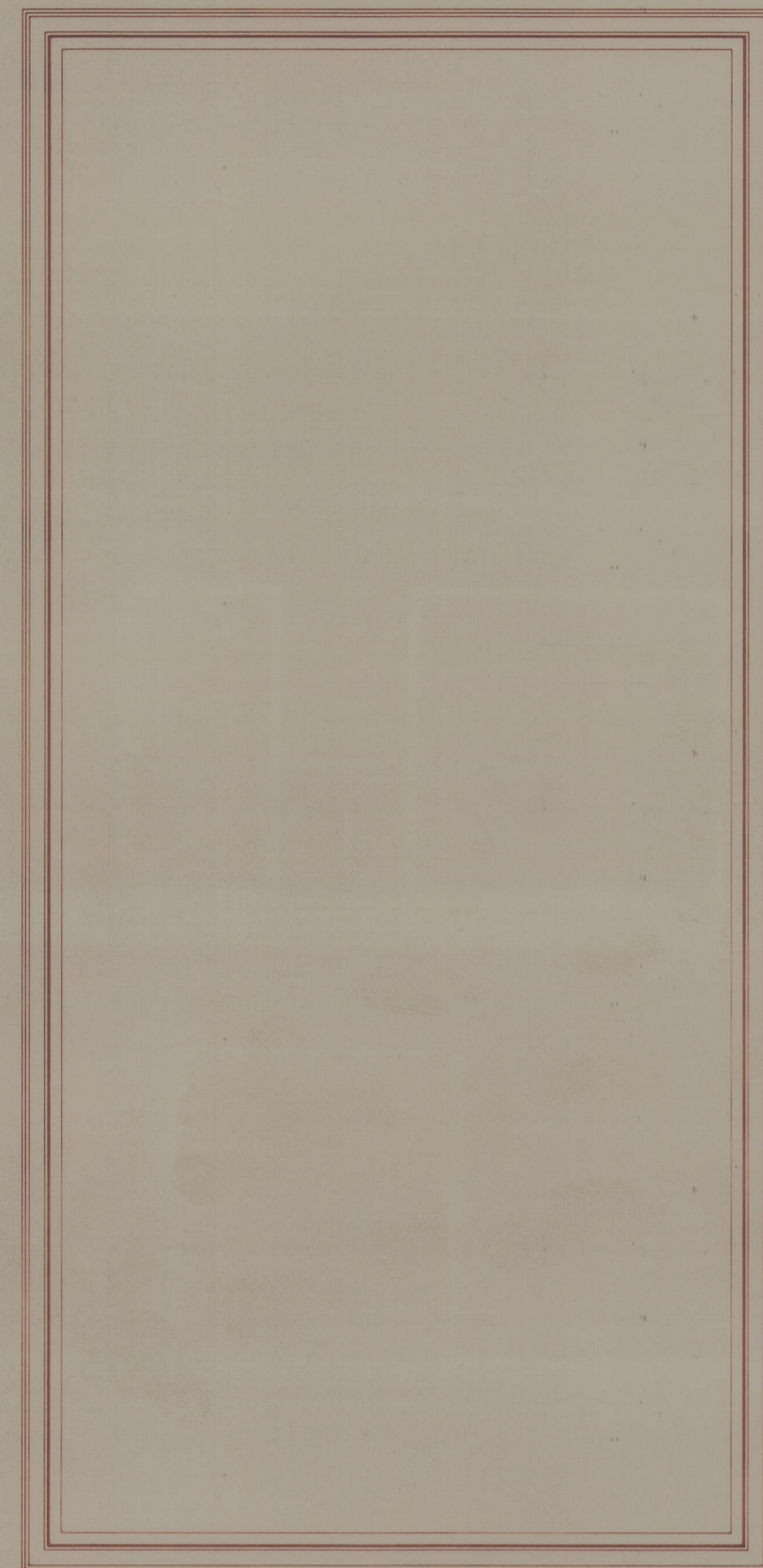


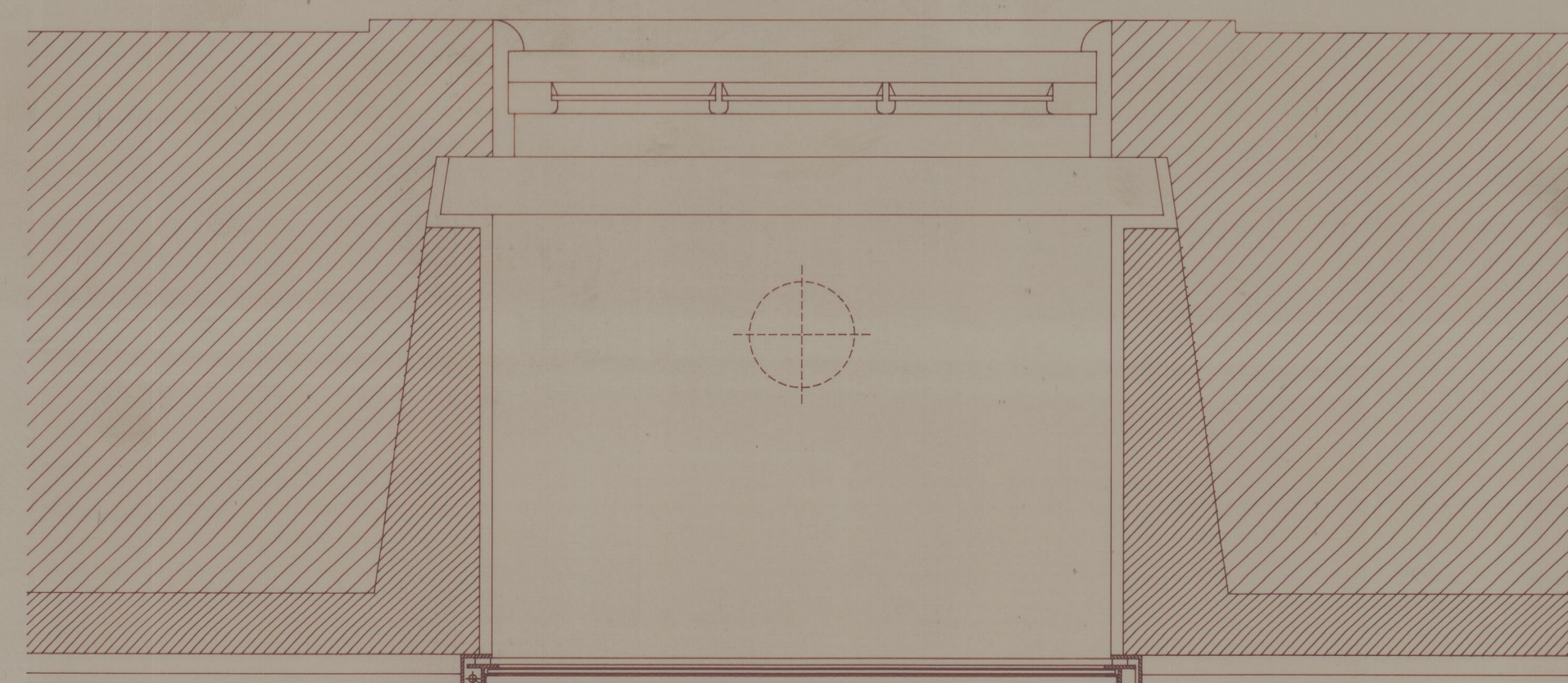
COORTE



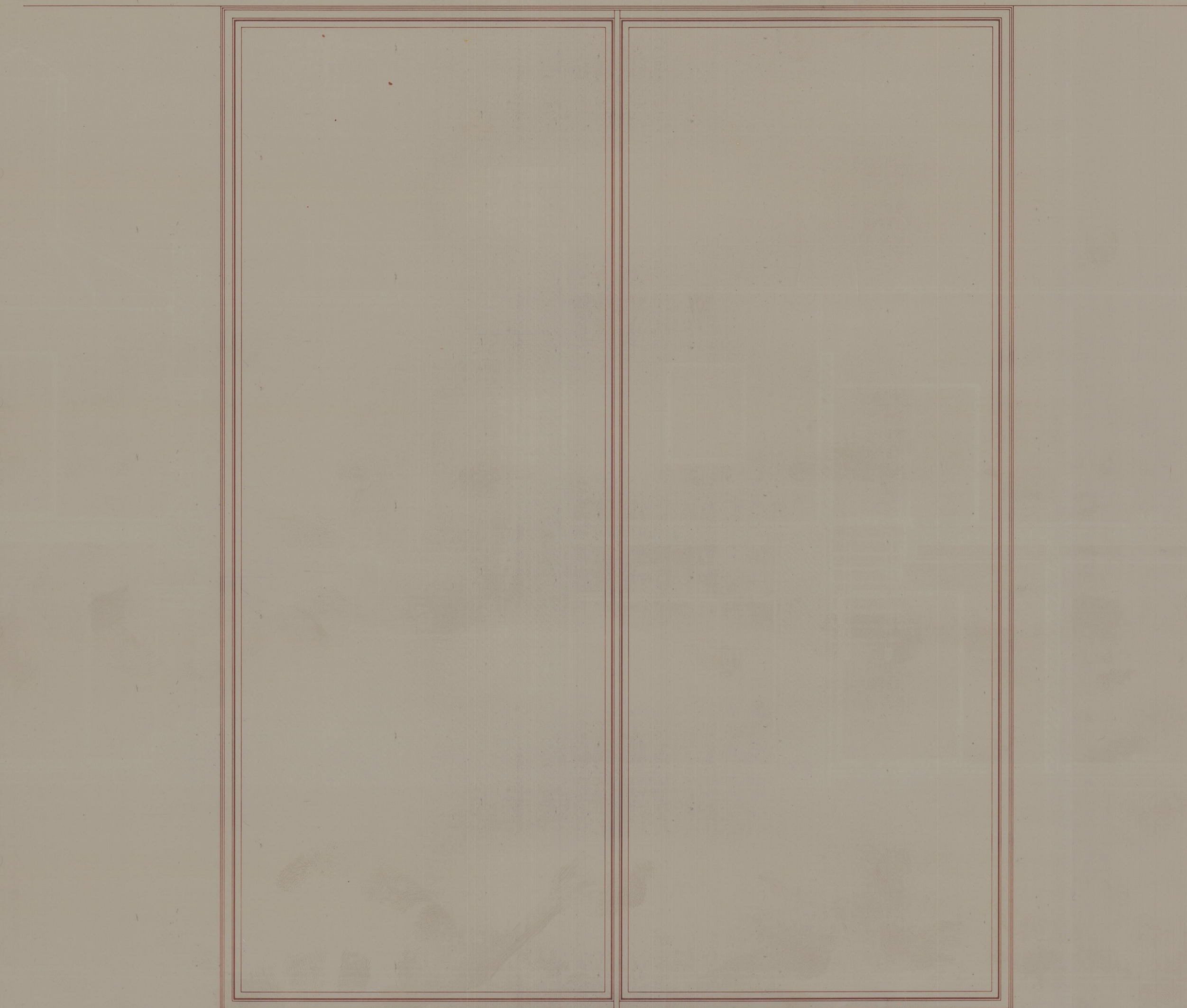
ALCADO INTERIOR

JE3/PI2, JE4/PI3, JE5/PI8, JE6/PI9, JE7/PI10, JE8/PI11, JE9/PI12
 JE11/J13, JE12/J14, JE22/J15, JE23/J16

PLANTA



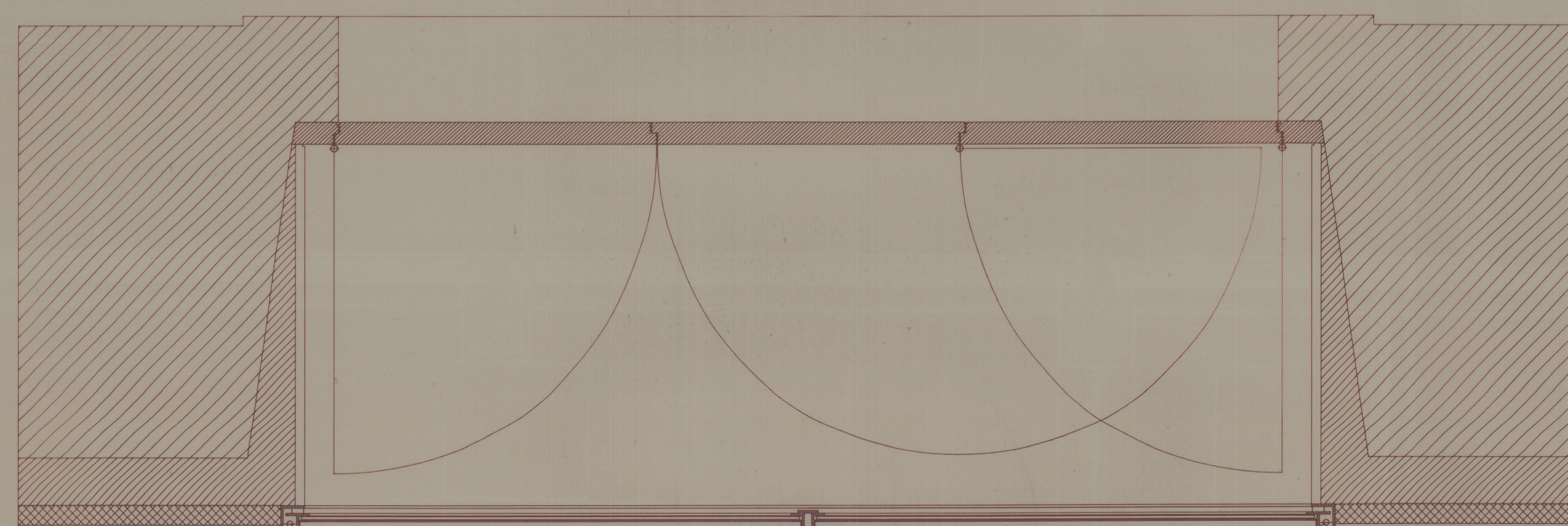
A



ALCADO INTERIOR

PE1/PI1, PE2, PE3

PLANTA



B



COORTE

TAPETE

VER DESENHO 36 PORMENORES ESCALA 1/2

MUSEU DO ABADE DE BAÇA - BRAGAÇA	Data	5/92	31
PROJECTO DE EXECUÇÃO - 1 FASE	Esc.	1/10	
PORMENORES TIPO A E B	Proj.	António M. Reis	Arq. MAF/PAB-10 92.12
ANTÓNIO PORTUGAL, arquitecto - MANUEL M. REIS		R. CONSTITUIÇÃO 782 1E 4300 PORTO Tel(02)4100058 Fax(02)4100884	

41-3374
 2845