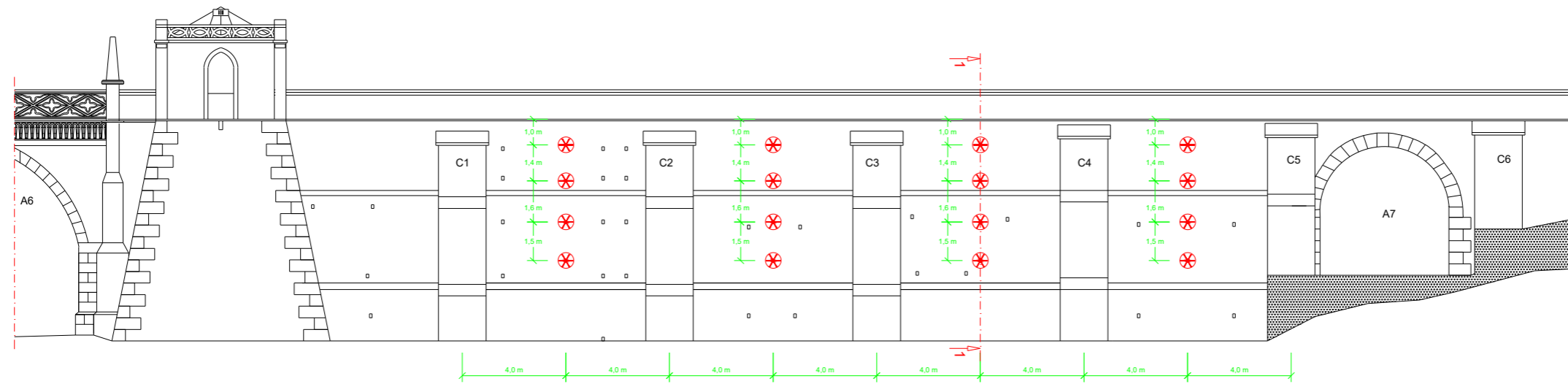


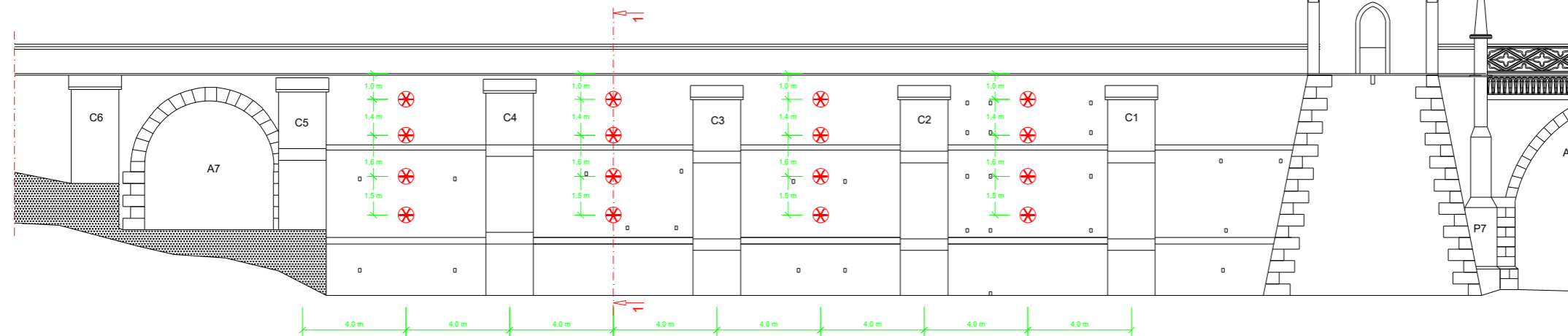
### Reforço da zona dos contrafortes através de ancoragens (Alçado Montante)

(Escala 1/100)



### Reforço da zona dos contrafortes através de ancoragens (Alçado Jusante)

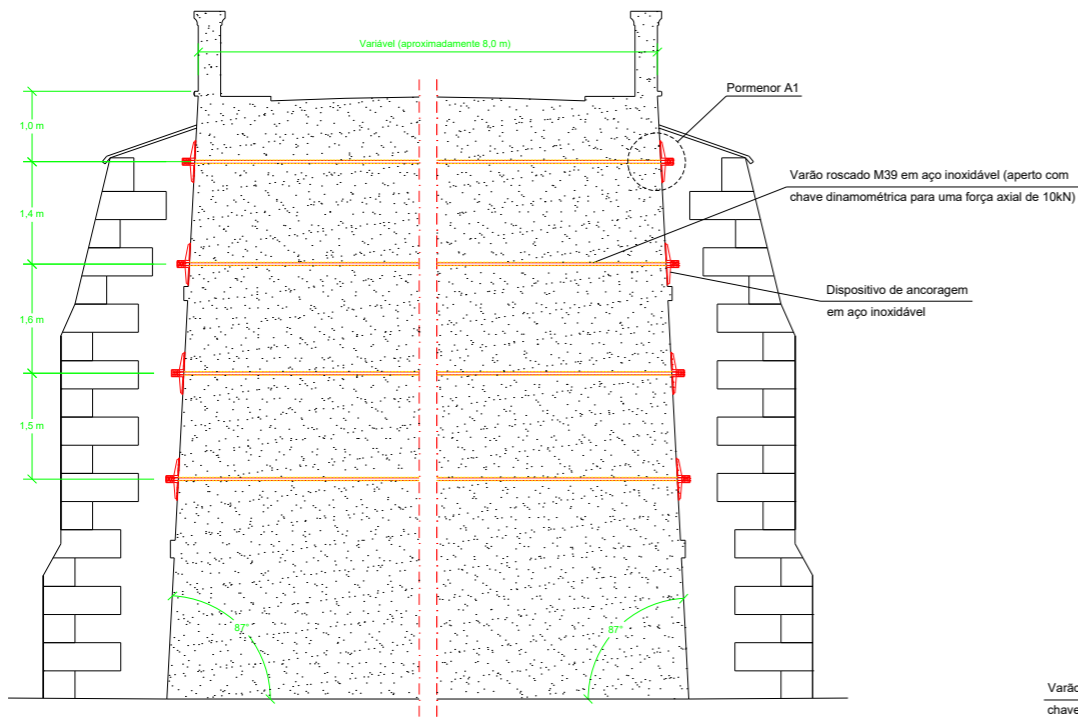
(Escala 1/100)



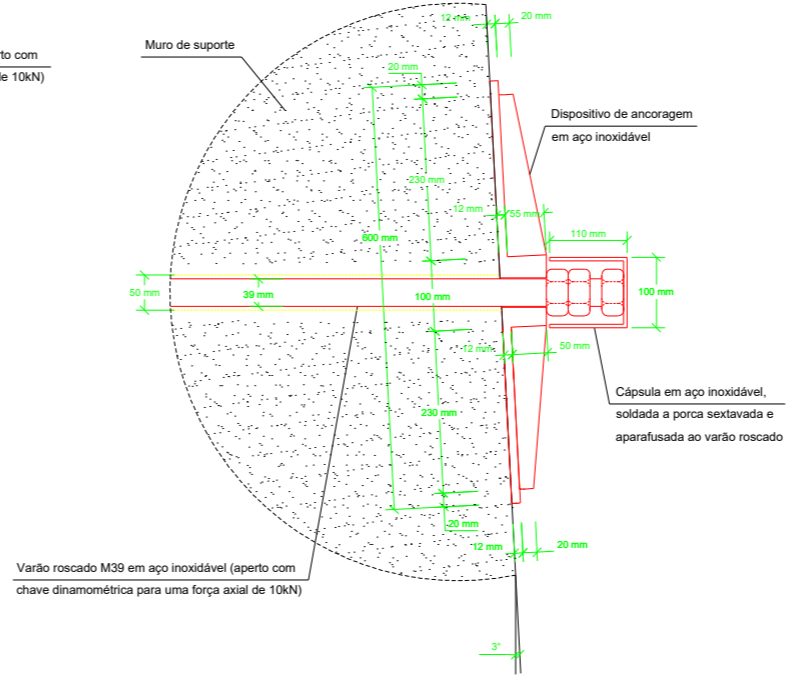
#### Notas:

Todas as cotas devem ser confirmadas no local

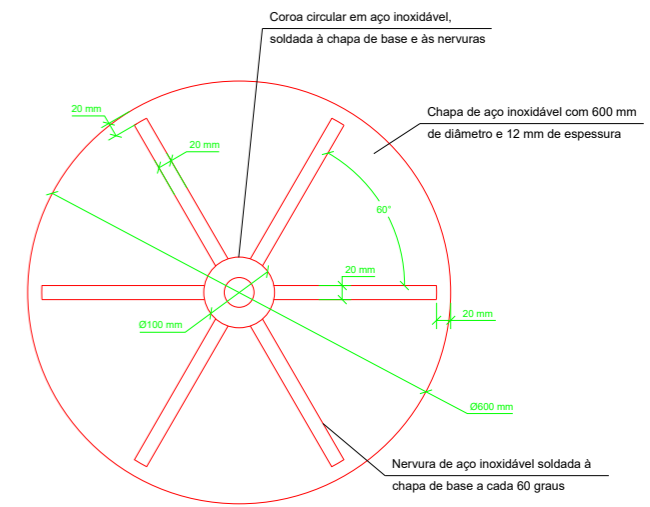
**Corte 1-1**  
(Escala 1/50)



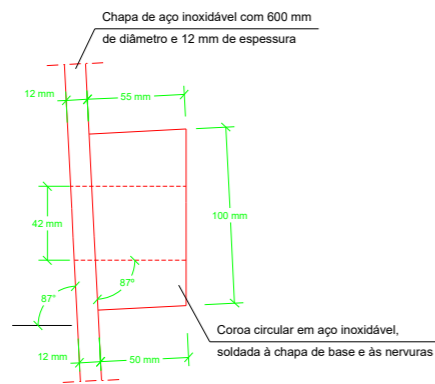
**Pormenor 1**  
Dispositivo de ancoragem  
(Escala 1/5)



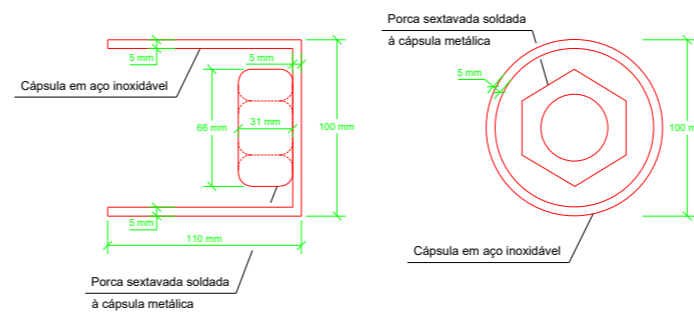
**Vista frontal do dispositivo de ancoragem**  
(Escala 1/5)



**Pormenor da coroa circular**  
(Escala 1/2)



**Pormenor da cápsula metálica**  
Vistas lateral e frontal  
(Escala 1/2)



**Materiais:**

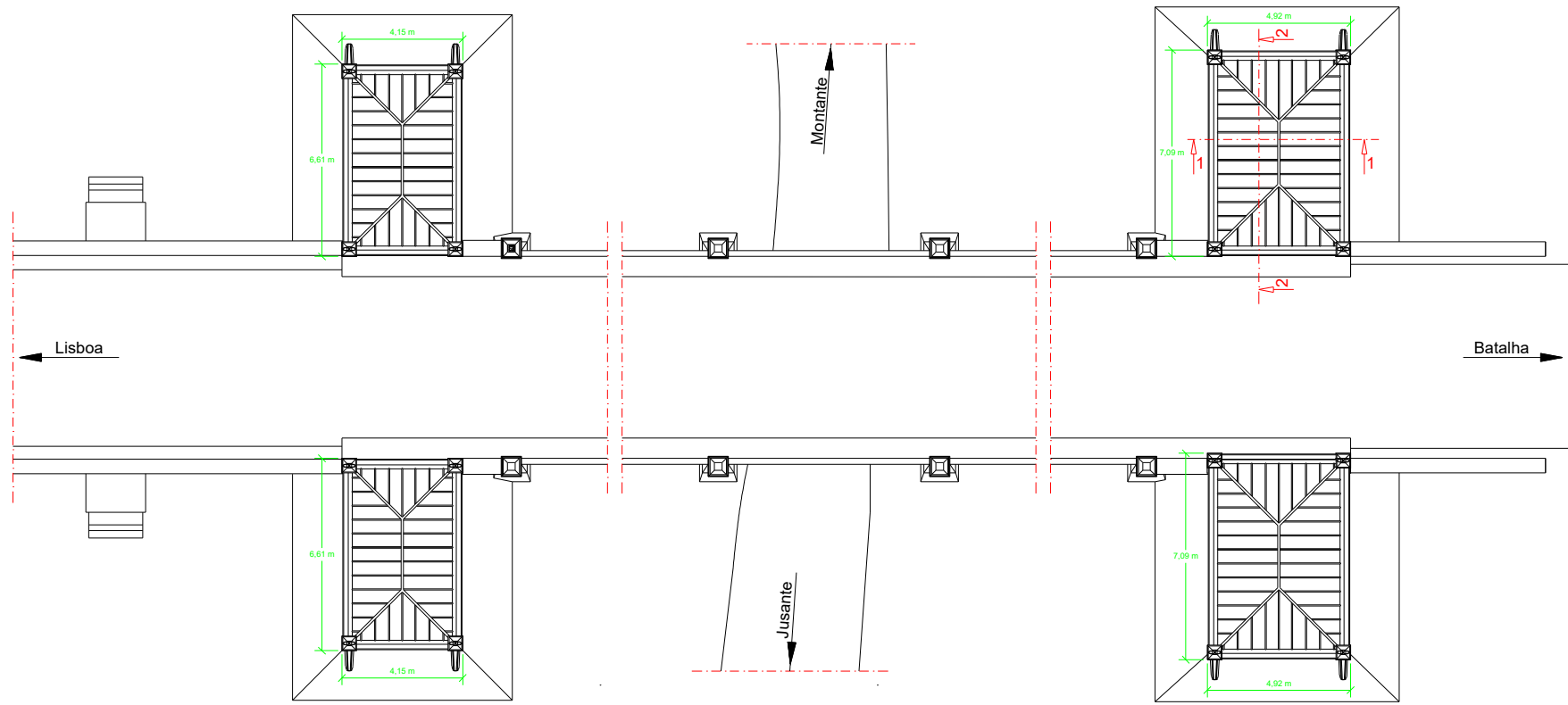
Aço inoxidável da Classe AISI 316

As soldaduras deverão ser verificadas pelo Instituto da Soldadura e Qualidade

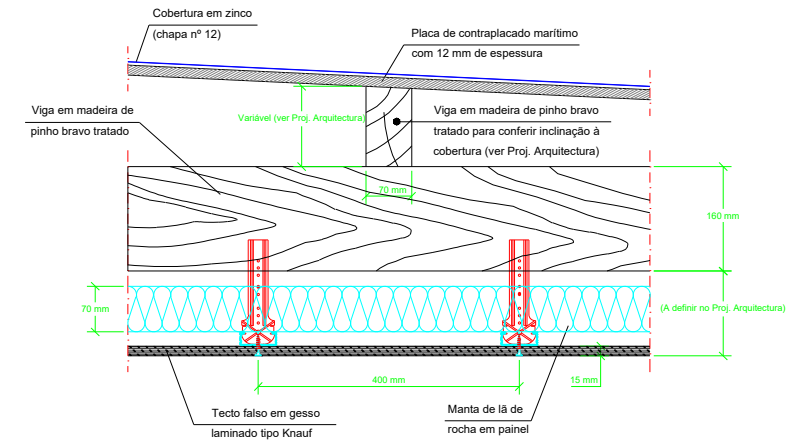
**Notas:**

Todas as cotas devem ser confirmadas no local

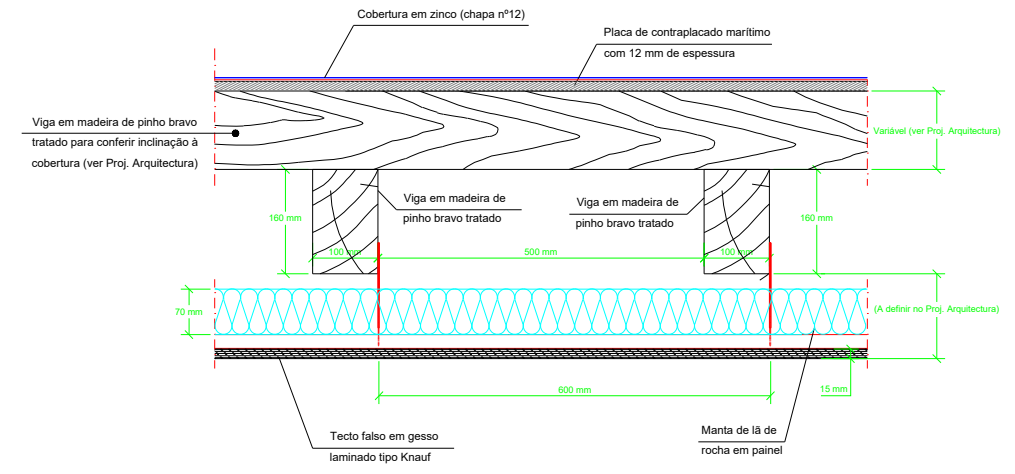
Planta das casas de Portageiro (Pavilhões)  
(Escala 1/100)



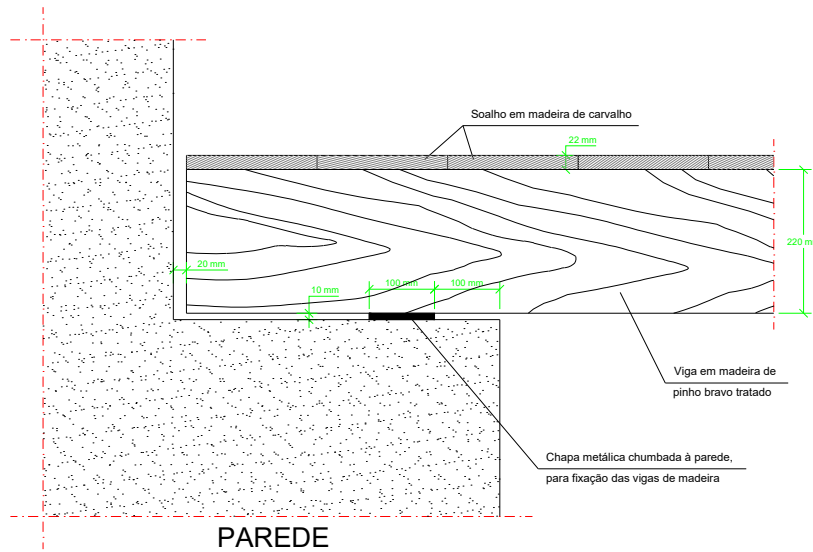
Corte 1-1: Cobertura  
(Escala 1/5)



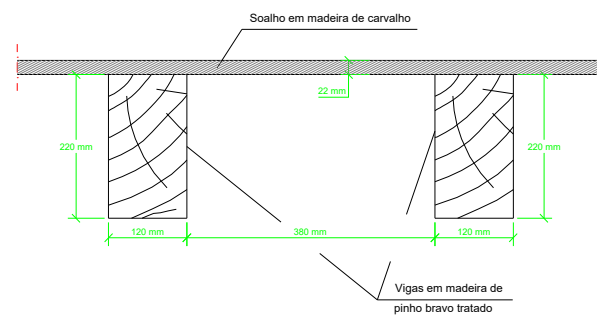
Corte 2-2: Cobertura  
(Escala 1/5)



Corte 1-1: Pavimento  
(Escala 1/5)



Corte 2-2: Pavimento  
(Escala 1/5)



Notas:

Todas as cotas devem ser confirmadas no local