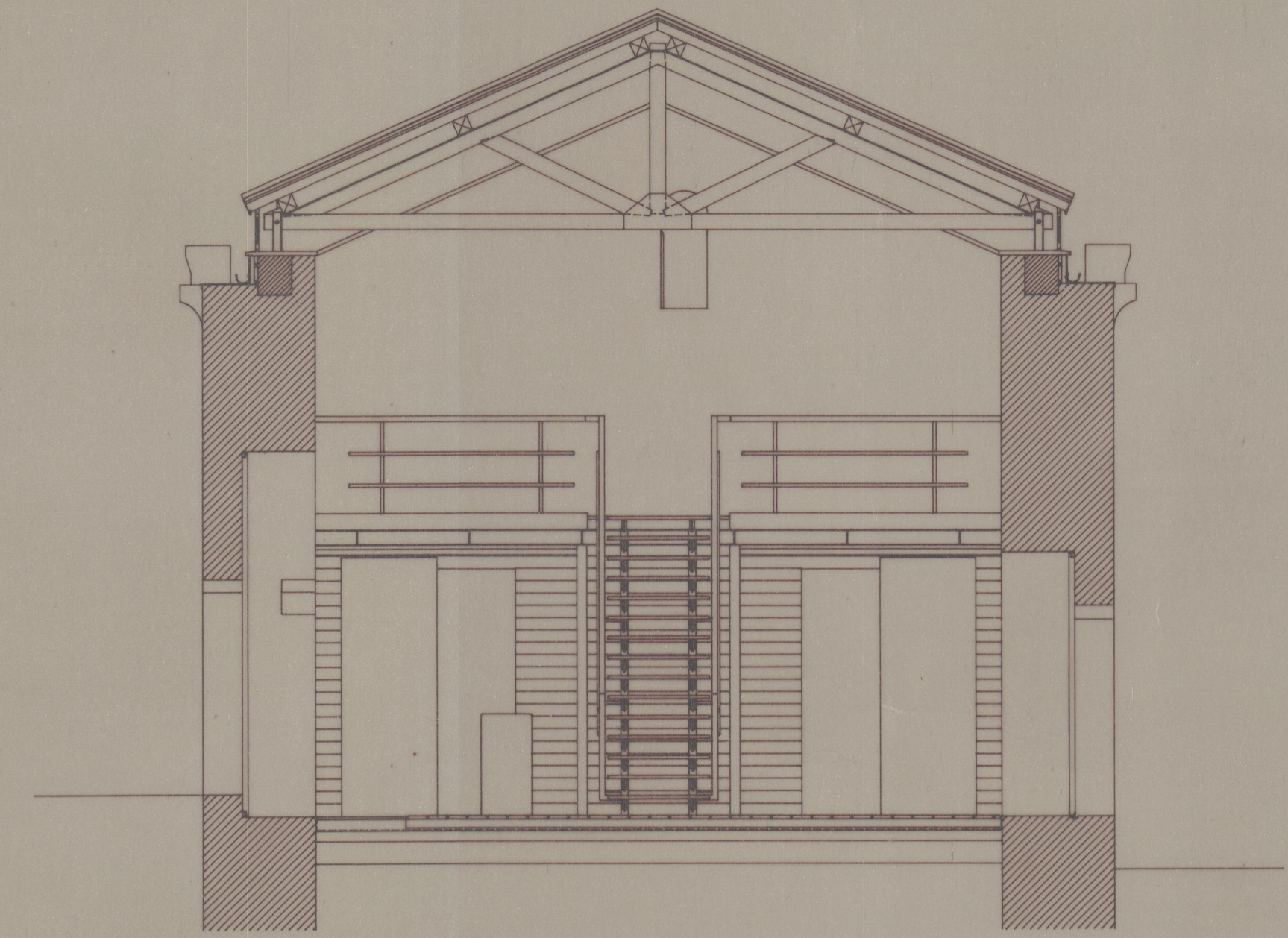
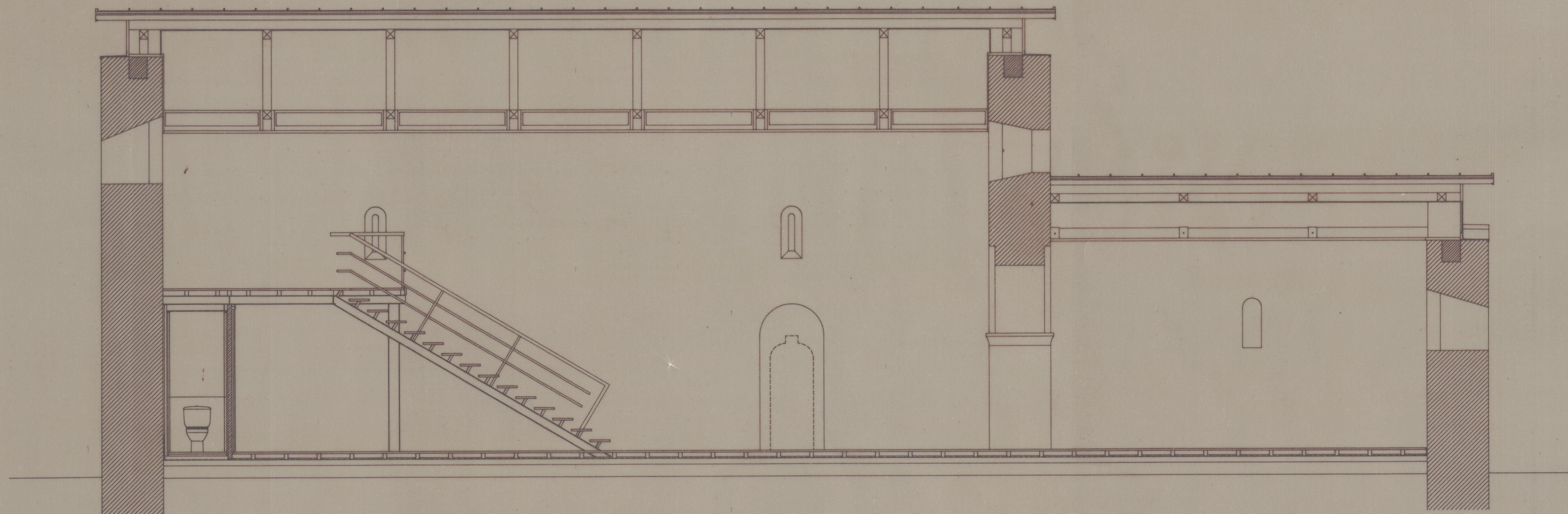


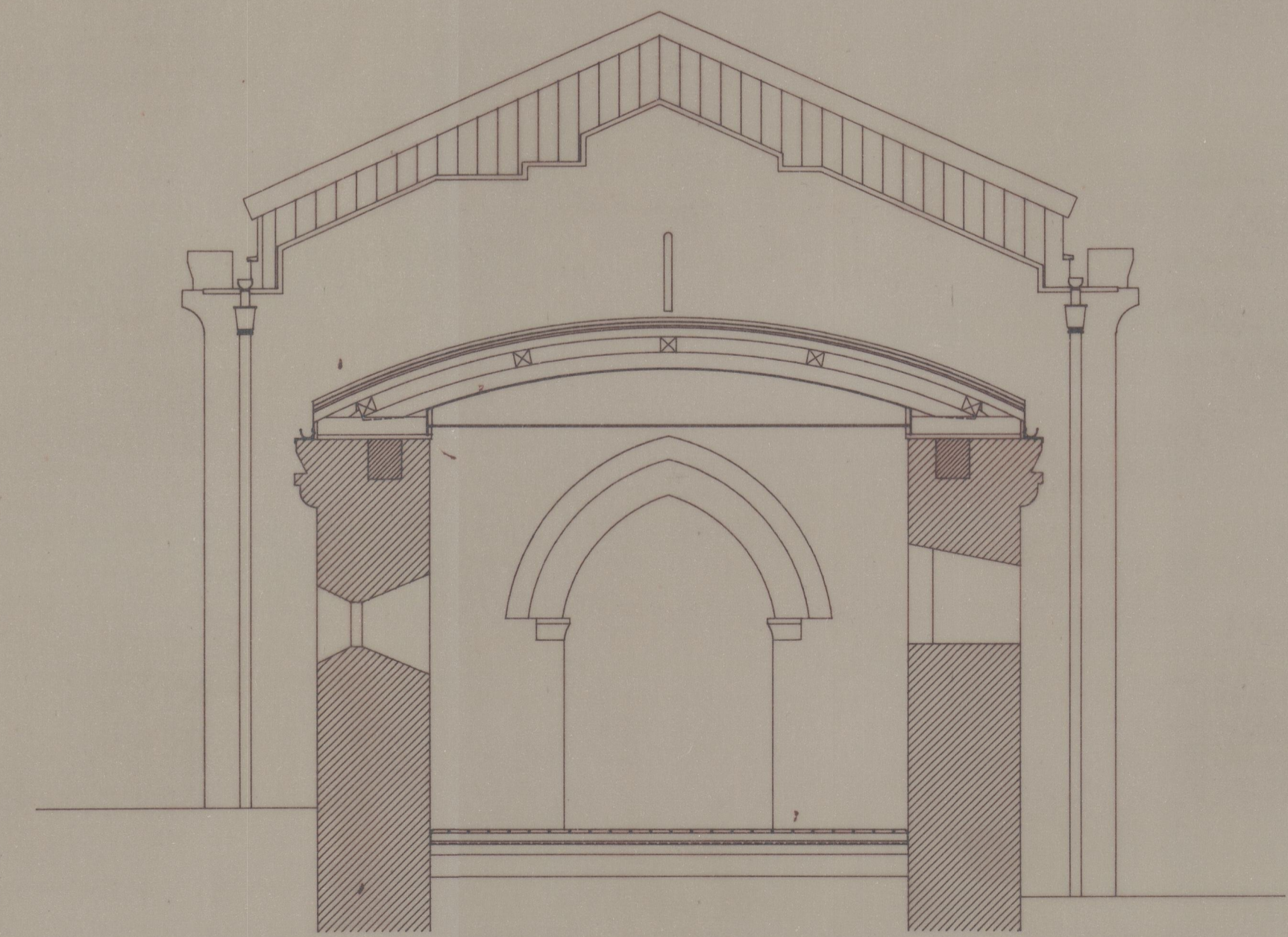
CORTE C1



CORTE C2



CORTE C3



CORTE C4

41.35.17  
 2702

CASTELO DE ANSIÃES - CARRAZEDA DE ANSIÃES	IPPAR	002
PROJECTO DE REVITALIZAÇÃO E SALVAGUARDA	PROJECTO DE EXECUÇÃO	C50-1
IGREJA DE S. JOÃO BAPTISTA - CORTES		ESC. 1:50
FRANCISCO CUNHA arquitecto		NOV. 92